

Supplementary Material

Associated with

The genus *Amegilla* (Hymenoptera: Apidae: Anthophorini) in Australia: A revision of the subgenera *Notomegilla* and *Zonamegilla* by REMKO LEIJS, MICHAEL BATLEY AND KATJA HOGENDOORN

Fig. S1.

CO1 (primers M70/M202) neighbour-joining tree calculated using uncorrected sequence divergence in PAUP*. Terminals are labelled with RB-numbers, which refer to Table S1, sequencing primer or 'cons', indicating consensus sequence based on forward and reverse sequencing.

Fig. S2.

CO1 (primers M414/M423) neighbour-joining tree calculated using uncorrected sequence divergence in PAUP*. Terminals are labelled with RB-numbers, which refer to Table S1, sequencing primer or 'cons', indicating consensus sequence based on forward and reverse sequencing.

Table S1. Table of DNA specimens and GenBank accession numbers and locality data.

Figure S1

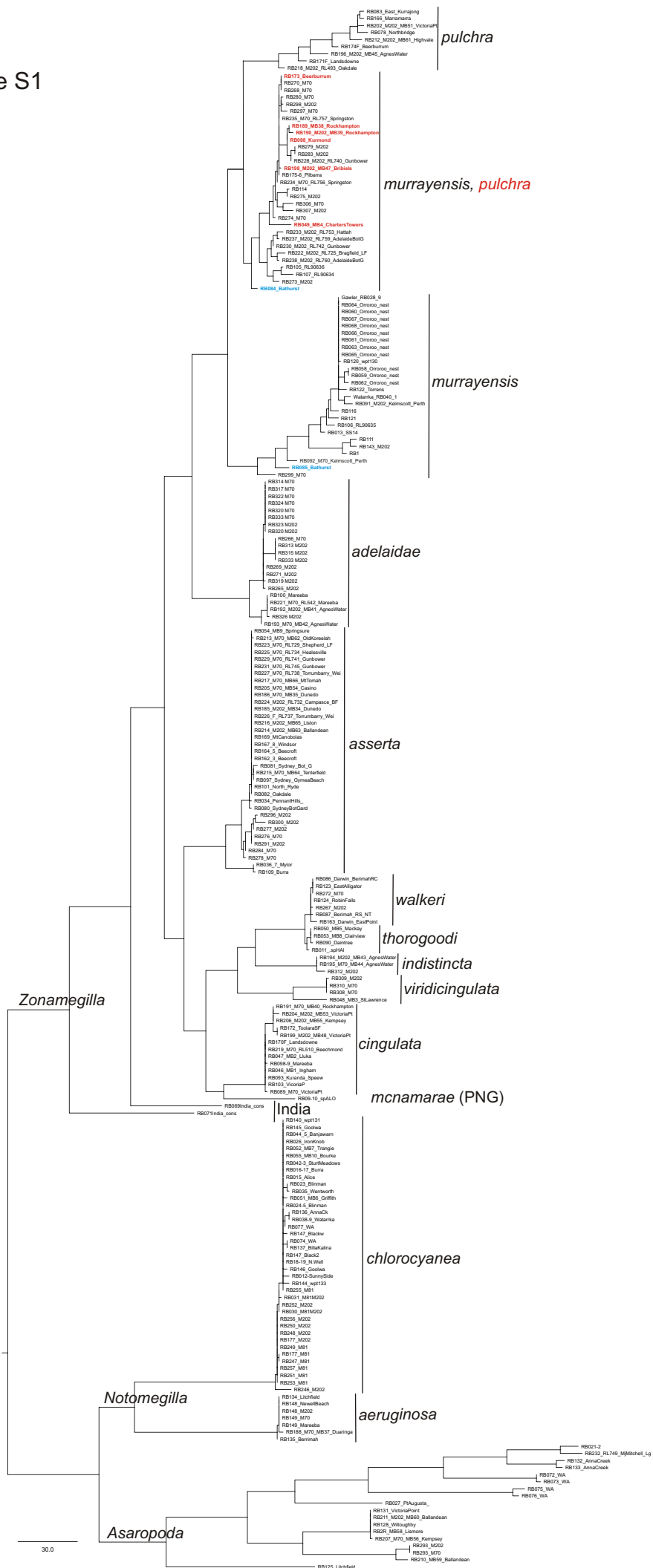


Figure S2

Notes about *Amegilla (Zonamegilla) pulchra*:
Specimens in red were collected at Victoria Point, Queensland

Specimens in blue were collected in Brisbane, Queensland

Specimens in green appeared in one of the *murrayensis* clades in the analysis with the M202/M70 primers

Although, variable with respect to colour of face marks and hair bands, the variation did not correlate with the two clades, all these specimens were identified as *pulchra*

