

# Sediment budget in the Lagoon of Venice, Italy

1  
2  
3  
4 A. Sarretta<sup>a1</sup>, S. Pillon<sup>b</sup>, E. Molinaroli<sup>c</sup>, S. Guerzoni<sup>a\*</sup>, G. Fontolan<sup>b</sup>  
5  
6  
7  
8

9 <sup>a</sup> CNR-Istituto di Scienze Marine, Riva VII Martiri 1364/A, 30122 Venezia, Italy  
10

11 <sup>b</sup> Dipartimento Scienze Geologiche Ambientali e Marine, Università degli Studi - via E. Weiss, 2  
12  
13 - 34127 Trieste, Italy  
14  
15

16 <sup>c</sup> Dipartimento di Scienze Ambientali, Università Ca' Foscari, Dorsoduro 2137, 30123 Venezia,  
17  
18 Italy  
19  
20  
21  
22  
23  
24  
25

26 \* Corresponding author. Tel.: +39 041 2404711 ; fax +39 041 5204126  
27

28 *E-mail address:* [stefano.guerzoni@ismar.cnr.it](mailto:stefano.guerzoni@ismar.cnr.it) (Stefano Guerzoni)  
29  
30  
31  
32  
33  
34  
35

36 [alessandro.sarretta@jrc.it](mailto:alessandro.sarretta@jrc.it) (Alessandro Sarretta)  
37

38 [spillon@units.it](mailto:spillon@units.it) (Simone Pillon)  
39

40 [molinaro@unive.it](mailto:molinaro@unive.it) (Emanuela Molinaroli)  
41  
42

43 [fontolan@units.it](mailto:fontolan@units.it) (Giorgio Fontolan)  
44  
45  
46  
47  
48  
49  
50

## 51 **Abstract**

52  
53 A comparison of 1927, 1970 and 2002 bathymetric surveys in the Lagoon of Venice was used to  
54  
55 reconstruct historical changes in sedimentation. A detailed GIS-based analysis of the charts  
56  
57  
58

---

59 <sup>1</sup> *Present address:* European Commission – Joint Research Centre, Institute for Environment and Sustainability,  
60 Spatial Data Infrastructures Unit, Via Fermi – TP 262, I-21020 Ispra (VA), Italy. E-mail: [alessandro.sarretta@jrc.it](mailto:alessandro.sarretta@jrc.it)  
61  
62  
63  
64  
65

1 revealed the timing and pattern of geomorphic changes and allowed calculation of sediment  
2 deposition and erosion for the entire lagoon and each of its four sub-basins: Treporti, Lido,  
3 Malamocco and Chioggia.  
4

5 Two main developments are discernible from comparative observation of the areal distribution of  
6 the main elevation ranges: the diminution in area of the saltmarshes, which decreased by more  
7 than 50%, from 68 km<sup>2</sup> in 1927 to 32 km<sup>2</sup> in 2002, and the progressive deepening of the lagoon,  
8 with a huge increase in the area of subtidal flats (between -0.75 and -2.00 m depth), from 88 to  
9 206 km<sup>2</sup> during the same period.  
10

11 Generally, the lagoon showed a clear-cut change in the most frequent depths (modal depth) from  
12 a value of -0.62 m in 1927 to -0.88 m in 2002. The deepening of the lagoon affected mostly the  
13 lagoonal sub-basins south of the town of Venice, where modal depth increased from -0.65 m to -  
14 1.12 m in Lido, from -0.64 to -1.75 m in Malamocco and from -0.39 m to -0.88 m in Chioggia.  
15

16 Large changes in lagoonal morphology were caused by human-induced subsidence, the dredging  
17 of navigation channels between 1927 and 1970, and intense natural erosion enhanced by  
18 sediment re-suspension due to Manila clam fishing between 1970 and 2002. There was a net loss  
19 of about 110 Mm<sup>3</sup> of sediment from the lagoon, most of which (73 Mm<sup>3</sup>, ca.70%) was in the  
20 earlier period. A significant amount was lost by dredging and direct disposal outside the system,  
21 either on land or at sea, and there was a net loss of 39 Mm<sup>3</sup> from the lagoon to the sea through  
22 the inlets, at an annual rate of 0.5 Mm<sup>3</sup>.  
23

24 Comparison of erosion rates in the two periods revealed an alarming acceleration, from a net  
25 sediment loss of 0.3 Mm<sup>3</sup>y<sup>-1</sup> in the period 1927-1970 to 0.8 Mm<sup>3</sup>y<sup>-1</sup> in 1970-2002. Deterioration  
26 caused a shift from a highly differentiated lagoon morphology in the 1930s to a sediment-starved  
27 and subsidence-dominated structure in the 1970s, and from there to the high-energy and more  
28 open (bay-like) lagoon of today.  
29

30 The results demonstrate the potential application of GIS to reconstruct the recent chronology of  
31 sediment distribution and to improve the understanding of the geomorphic processes shaping the  
32  
33  
34  
35  
36  
37  
38  
39  
40  
41  
42  
43  
44  
45  
46  
47  
48  
49  
50  
51  
52  
53  
54  
55  
56  
57  
58  
59  
60  
61  
62  
63  
64  
65

seafloor, whilst providing an insight into the possible impacts of environmental changes induced  
by natural and anthropogenic forcing.

*Keywords:* bathymetry; morphological evolution; human-driven change; grain-size; lagoon of  
Venice, 45°N, 12°E, coastal zoning

## 1. Introduction

1 The saltmarshes of the Lagoon of Venice (LV) have experienced intense and varied human  
2  
3 impacts that range from reclamation, waste disposal and livestock grazing to less obvious, more  
4  
5 modern activities such as restoration efforts (Silliman et al. in press). Large expanses of tidal  
6  
7 flats and open saltmarshes near cities were converted to port and industrial complexes, resulting  
8  
9 in their permanent loss (Pinder and Witherick, 1990) and the disappearance of the ecosystem  
10  
11 function they once performed.  
12  
13

14  
15 The substantial changes that have taken place in the morphology of the Lagoon of Venice during  
16  
17 its history result from a combination of natural processes, human activities, and sedimentological  
18  
19 responses to such activities. Although knowledge of long-term trends in deposition and erosion  
20  
21 are important for proper management of coastal ecosystems, it is difficult to gain this knowledge  
22  
23 from brief field experiments. A long-term, large-scale perspective of the sediment system may be  
24  
25 obtained, however, by analyzing a sequence of bathymetric surveys over a long time period  
26  
27 (Jaffe et al., 2007). Understanding how lagoons have responded to past modification is necessary  
28  
29 in order to prevent further degradation in response to future environmental pressures (Higgins et  
30  
31 al., 2007), including invasive species (which fundamentally alter saltmarsh community structure)  
32  
33 and the relatively unexplored and multifaceted effects of climate change (Bromberg Gedan et al.,  
34  
35 2009).  
36  
37

38  
39 This paper presents a history of bathymetry, deposition, erosion, and morphological changes  
40  
41 (affecting saltmarshes and tidal flats) in the LV from 1927 to 2002, and relates them to changes  
42  
43 in land-use and the main physical and sedimentological activities affecting the lagoon  
44  
45 environment during the last few decades. The history was reconstructed using computer analysis  
46  
47 (Longley et al., 2001) and hydrographic and topographic surveys conducted by the Venice Water  
48  
49 Authority (*Magistrato alle Acque di Venezia*, MAV). This study is not the first to address  
50  
51 bathymetric changes in the LV (MAV-CVN, 1999; MAV-CVN, 2004; Pillon et al., 2003 and  
52  
53 Molinaroli et al., 2009) but it is the most comprehensive to date. Molinaroli et al. (2009)  
54  
55  
56  
57  
58  
59  
60  
61  
62  
63  
64  
65

performed a precise division of the LV into four sub-basins using GIS-based techniques (Fig. 1):  
1 Treporti (A), Lido (B), Malamocco (C) and Chioggia (D). The authors also demonstrated that the  
2  
3 morphological and sedimentological variations between 1970 and 2002 were different in each  
4  
5 sub-basin. In this paper we used their partitioning to follow the historic evolution of the  
6  
7 bathymetry of the four sub-basins over more than 70 years, in order to construct two sediment  
8  
9 budgets, one for the period 1927-1970 and another for 1970-2002.  
10  
11  
12  
13  
14  
15

## 16 **2. Study area and historical background**

17  
18 The Lagoon of Venice is the largest lagoon in the Mediterranean. Like many other coastal areas  
19  
20 around the world, it has been subject to transformations and intense anthropogenic pressure over  
21  
22 the past few decades which have deeply modified the natural environment. The construction of  
23  
24 breakwaters at the lagoon inlets during the period 1808-1927 and the dredging of lagoon  
25  
26 channels for navigation (in 1926 and 1970) have had a significant impact on the lagoon's  
27  
28 morphology (Guerzoni and Tagliapietra, 2006).  
29  
30  
31

32  
33 Tides in the area are semidiurnal, with neap, mean and spring tidal ranges of ca. 45, 65 and 100 cm  
34  
35 respectively. Saltmarshes are areas within the lagoon above mean sea level, and tidal flats are the  
36  
37 whole of the remainder of the lagoon below mean sea level except the channels. Tidal flats (mostly  
38  
39 mudflats) are classified as either intertidal or subtidal flats, depending on whether they are above or  
40  
41 below the mean low water spring tide value of -0.50 m.  
42  
43  
44

45 Riverine sediment input into the lagoon has been almost completely eliminated, and the  
46  
47 breakwaters constructed to defend the inlets have greatly reduced the input of coarse marine  
48  
49 sediment into the lagoon (Day et al., 1998). As a consequence, erosion and subsidence,  
50  
51 particularly during the last century, have caused a three-fold reduction in the area of saltmarshes  
52  
53 in the Venice Lagoon to about 35 km<sup>2</sup> at present. In the past 15 years or so, projects have been  
54  
55 undertaken to arrest marsh loss and promote restoration (Scarton et al., 2000).  
56  
57  
58

59  
60 **Insert Table 1**  
61  
62  
63  
64  
65

1 Various events can be recognized as important activities affecting structures and processes in the  
2 morpho-bathymetry of the LV between 1927 and 2002, and are listed in Table 1, chronologically  
3 subdivided in terms of the two periods considered for the bathymetric comparison (1927-1970  
4 and 1970-2002). They are:  
5  
6

7  
8 1. Saltmarsh destruction from 1927 to 1960 to reclaim land for the construction of the industrial  
9 zone (a total of 22 km<sup>2</sup>), together with Venice airport and urban development on the lagoon-side  
10 of the city of Mestre (S. Giuliano), the latter two occupying a further 5 km<sup>2</sup>;  
11  
12

13  
14 2. modification of hydrodynamic conditions as a result of the dredging of the Malamocco-  
15 Marghera ship canal (the “Oil Canal”), in the central part of the lagoon in the 1960s. This work  
16 affected the first period of the study due to the disposal on land of the dredged material (more  
17 than 40 Mm<sup>3</sup>), and the second period by influencing lagoon morphology (e.g. saltmarsh  
18 distribution and bathymetric features, such as texture, grain size, depth, and erosion rate)  
19 (Ravera, 2000);  
20  
21

22  
23 3. increased nutrient and pollutant (trace metals and POPs) loads in the 1960s and 1970s, in  
24 relation to inputs from the industrial area and the catchment basin, and urban waste from the city  
25 of Venice (Cossu and De Fraja Frangipane, 1985; Donazzolo et al., 1982). These activities  
26 produced several million m<sup>3</sup> of material with various levels of contamination; the new regulatory  
27 framework established by the Ministry of the Environment in the 1990s (Ministero Ambiente,  
28 1993; Apitz et al., 2007) imposed strict guidelines regarding the disposal of this material;  
29  
30

31  
32 4. dredging for maintenance purposes carried out in the last decade by the Water Management  
33 Authority of Venice and the Port Authority, amounting to an average of about 1 million m<sup>3</sup> y<sup>-1</sup> of  
34 sediments (MAV/CVN 2004), which was dumped outside or re-used inside the lagoon; and  
35  
36

37  
38 5. mechanical clam harvesting by local fishermen since the early 1990s to exploit the newly-  
39 formed banks of Manila clams (Provincia di Venezia, 2000; Pranovi et al., 2004), an alien  
40 species, intentionally introduced into the lagoon in the middle of the 1980s for aquaculture and  
41  
42  
43  
44  
45  
46  
47  
48  
49  
50  
51  
52  
53  
54  
55  
56  
57  
58  
59  
60  
61  
62  
63  
64  
65

which subsequently became widespread throughout the lagoon (Cesari and Pellizzato, 1985; Pranovi et al., 2006).

### 3. Materials and Methods

**Insert Figure 1**

#### 3.1 Bathymetric datasets

The bathymetric datasets used for assessing historical changes in the LV are derived from three maps published by the MAV after survey campaigns conducted in 1927, 1970 and 2002.

The “1927” bathymetric maps were published by the MAV in 1934. They are the result of a detailed survey carried out between 1922 and 1933 (central year 1927) and consist of 134 maps on a scale of 1:5000. The survey was conducted by performing precise tacheometric measurements and manual soundings. A precise altimetric network covered the entire lagoon surface. These maps have recently been digitized by the Venice municipal Tide Forecast Centre as high resolution TIFs.

The “1970” bathymetric maps were published in 1971 by the MAV. They were the result of surveys carried out from 1968 to 1971. Bathymetric data were collected by multiple sampling methods: echosounding, tacheometric measurements and stereophotogrammetric analysis.

The “2002 dataset was collected from the end of 1999 to June 2002, further data being collected in spring 2003. A “Multibeam” bathymetric acquisition system was used for the main channels (depth >5 m) and the three seaward inlets (Lido, Malamocco, Chioggia). For shallow waters and secondary channels (depth <5 m), a single-beam echo-sounder was used. At shallower depths near saltmarshes and on tidal flats, data are collected by the traditional topographic method (stadia rods coupled to a GPS). The distribution of natural and artificial saltmarshes was surveyed by stereo aerial photography. Digital data for both the 1970 and 2002 maps were provided by the MAV.

#### 3.2 Sea-level reference datum and adopted corrections

1 Comparison of surveys and their related morpho-bathymetric maps requires consideration of the  
2 reference datum used during each survey. For a sediment budget calculation, vertical movement  
3 (of land and sea) also has to be considered, in order to distinguish actual from apparent sediment  
4 losses.  
5  
6

7  
8 The datum used in the 1927 map is the National Altimetric Network Zero (NANZ), established  
9 in 1910 by the IGM (the Italian Military Geographical Institute) with reference to the tide gauge  
10 at Campo S. Stefano (CSS), Venice. The NANZ corresponds to the average of the high and low  
11 tides recorded from 1884 to 1909, assigned to the median year 1897 (Dorigo, 1961). In 1923 the  
12 reference tide gauge of Venice was transferred to Punta della Salute (PdS). Elevation differences  
13 between benchmarks associated with both CSS and PdS are negligible, in the order of 3-4 mm,  
14 thus within the tolerance errors of levelling between two geodetic elements.  
15  
16  
17  
18  
19  
20  
21  
22  
23  
24

25 The hydrographic maps of 1970 and 2002 both refer to the datum established in 1952 (and which  
26 is still in use), corresponding to the mean sea level recorded at Genoa in 1942 (IGM42).  
27 Altimetric measurements were carried out in 1968 in order to control and position the new datum  
28 with respect to the NANZ at Venice. Using the PdS benchmark as the reference control, the  
29 IGM42 datum was found to be 23.56 cm higher than the NANZ (Cavazzoni, 1977; Ferla et al.,  
30 2006). This value is a result of both the eustatism and subsidence, natural or human-induced  
31 (Gatto and Carbognin, 1981), which has occurred since the beginning of the last century.  
32  
33  
34  
35  
36  
37  
38  
39  
40  
41

42 Reference data and sea-level time series are shown in Fig. 2. Mean sea-level data are available  
43 for both Venice and Trieste; the latter is a tectonically stable maritime city located 115 km from  
44 Venice, on the eastern side of the northern Adriatic. A graphic indication of the subsidence  
45 which occurred in Venice during the examined period is given by the differing rates of apparent  
46 sea-level change in the two cities (Fig. 2b). It was about 10 cm greater in Venice than Trieste  
47 during the critical period 1927-70, when there was intensive water extraction from the deep  
48 aquifers underlying the former to supply industries centred on Marghera. According to Gatto and  
49 Carbognin (1981) the relative level of the land fell by a total of 23 cm over 100 years: ca. 3 cm  
50  
51  
52  
53  
54  
55  
56  
57  
58  
59  
60  
61  
62  
63  
64  
65



are due to natural (geological background) subsidence, ca. 9 cm to anthropogenic subsidence and 11 cm to the rise in mean sea-level. Mean sea level is still rising, with absolute values currently up to 27-28 cm above the NANZ.

Considering the above data and the values shown in the graph (Fig. 2), it is now possible to specify the correction to use when analysing topographic variations over time.

The differences between mean sea levels measured during, or immediately before, the period of survey and the reference datum were calculated for each map, using the long term sea-level time series (Fig. 2). The depth correction for the 1927 map, surveyed during 1922-33 (median year = 1927) is 6 cm, to compensate for the rise in mean sea level compared to the NANZ value (i.e., the relative sea level rise which occurred between 1897 and 1927). The average sea level measured during the period 1922-33 was adopted as the 1927 mean sea-level.

Analogously, considering the mean sea level for both the 1970 and 2002 charts as the mean sea level calculated over the 10 years before the last year of each survey, no correction is needed for either of the maps, since the reference datum (IGM42) is only 1.4 cm higher than the 1970 mean sea-level and approximately the same as the mean sea level in 2002.

Calculation of the sedimentary budget requires a more accurate knowledge of the depth values, in order to identify the “real” depth changes, i.e., those that are due to erosional or depositional processes. Thus, the lagoonal mass balance can be only obtained by eliminating vertical movements of both land and sea occurring between each pair of comparison maps. For the sediment budget 1927-70, the depth correction adopted is 23 cm, as the approximation of the absolute difference between the IGM42 and NANZ levels (23.56 cm), measured at the reference PdS benchmark, which is the product of both eustatism and subsidence. Unfortunately, in this comparison it was not possible to use differential subsidence values for the individual sub-basins of the lagoon, since a precise topographic network for monitoring land displacement is available only for the more recent period.

Given the use of the same reference datum and the small variations in sea level, the 1970-2002 mass balance was calculated from original elevation data corrected only for the differential subsidence occurring in the lagoon sub-basins during the time span, available from spatial data reported by Brambati et al. (2003) and Carbognin et al. (2004).

**Insert Figure 2**

### 3.3. *Sedimentology*

Sedimentological information contemporary with the bathymetric chart of 1927 is very scarce. The few papers from that time dealing with surficial sediment characteristics mainly focus on benthic communities (Vatova, 1940, 1949), and only a rough description of sand/mud ratios in a few sub-areas was reported. In contrast, two sampling campaigns performed in the 1970s and in 2000s provide us with much more information (Molinaroli et al., 2009). The samples from the first campaign were collected between 1976 and 1978 by the Sezione Geo-Mineralogica of Ca' Foscari University in Venice, when more than 200 sediment samples (~10 cm thick) were collected with PVC pipes. Samples were collected from the lagoon floor, at water depths of between 0.1 and 2.4 m. The second set of samples was collected in 2002 by the Institute of Marine Sciences of Venice when 140 bottom sediment samples (~8 cm thick) were collected with a PVC pipe from the lagoon floor at depths of between 0.2 and 2.2 m. Molinaroli et al. (2009) showed that in both cases samples were taken from over the complete lagoon with the exception of fish farms and reclaimed areas; the analytical procedures used for the two sampling campaigns were practically the same.

### 3.4. *GIS and spatial analysis*

#### 3.4.1 *Map georeferencing and digitizing*

The three bathymetric datasets (1927, 1970, 2002) were processed to produce three bathymetric models of the LV. Every step in the analysis was performed using the ESRI ArcGis and QGIS-GRASS environments. The datasets were of two types: the 1927 one was supplied in raster

format maps (TIFs) by the Venice municipal Tide Forecast Centre, while the other two datasets (1970, 2002) were in ESRI shape format, as supplied by the MAV.

The 1927 TIFs were georeferenced using control points recognized on a digital map, the Technical Regional Map in Autocad format, nominal scale 1:5000, based on the Gauss-Boaga Projection (Italian National Coordinate System). Although the original coordinate system adopted in 1927 was different, because the national coordinate system was changed in 1952, a previous comparison between the 1927 and 1970 maps, performed by the same institution which had published them, stated that the difference was not relevant at the scale involved (Rusconi, 1987).

Once geo-referenced, the TIFs were mosaiced to check for overlap. Where the overlapping rasters did not match, a check for geo-referencing errors was performed.

The subsequent phase was the digitalization of the morphological features in the lagoon. The dataset included three different geometric types of object: points, polylines and polygons.

Points were used to represent spot elevation data, while polygons were used to contour the saltmarshes. Polylines were used as an aid in the process of building the surface.

#### 3.4.2 Bathymetric models

To create the lagoon morphological models, a TIN (Triangulated Irregular Network) interpolation type was chosen, because it is precise (it maintains the original data at the sample points) and varies its precision in accordance with data density. The lagoon was subdivided into three morphological categories (saltmarshes, submarine areas and channels) using specific vector layers provided by the MAV. Each zone was interpolated individually, to avoid the problems associated with abrupt changes in slope. The TIN processed using the whole dataset experienced some interpolation problems, located at the transitions between the three categories. The interpolated surfaces did not respect the real transition between different morphologies, thus introducing errors of volume calculation.

1 The three datasets cover different areas, that of 1927 having the widest coverage. This is because  
2 the area of the lagoon open to tidal circulation varied during the period in question. Therefore an  
3 analysis mask was used to study the evolution on a common surface. The mask represents the  
4 open lagoon surface as it was in 1970 without the fish farming and unfinished reclamation areas.  
5  
6 The analysis mask was supplied by the MAV. All three TINs were checked for interpolation  
7 errors, which were often caused by errors in the digitalization process. Those errors were of two  
8 types: positive-to-negative inversion and misplacement of data points, i.e. channel data points  
9 placed inside saltmarsh polygons. The datasets were thoroughly analyzed to find and correct  
10 these errors. Once the TINs were validated they were converted to Grids (ESRI raster format)  
11 with 10 m cells. The cell dimension was chosen to produce as detailed a representation of the  
12 models as possible while keeping the required processing power within manageable limits.  
13  
14 Rasters cannot represent vectorial models in detail, because the entities are quantized, and  
15 therefore limited to describing features bigger than the cell's dimensions. This means that the  
16 raster surface area is smaller than the TIN surface area, though the difference amounts to 0.1%.  
17  
18 This problem was particularly evident when the three rasters (saltmarshes, submarine areas and  
19 channels) were combined to build the lagoon model. The resulting raster presented "no-data"  
20 cells at the borders of the three original rasters. This problem was solved by a Map Algebra  
21 operation which assigned to these no-data cells a mean value calculated from the 8 adjacent cells.  
22  
23 Although the same analysis mask was used, the three raster models had different total surface  
24 areas. The difference is small and amounts to 0.2% of the total lagoonal surface area.  
25  
26 Analysis of the data points falling within the polygons of saltmarshes gave different mean  
27 elevations for each dataset: 0.24 m, 0.22 m and 0.30 m for the 1927, 1970 and 2002 surveys  
28 respectively. The elevation of the marshes was sampled with different methods in the three  
29 surveys. Despite being older, the 1927 survey turned out to be most accurate, because the  
30 marshes were surveyed with tacheometric methods whereas in the two more recent surveys the  
31 stereo photogrammetric method was applied. Several recent studies show that the North Adriatic  
32  
33  
34  
35  
36  
37  
38  
39  
40  
41  
42  
43  
44  
45  
46  
47  
48  
49  
50  
51  
52  
53  
54  
55  
56  
57  
58  
59  
60  
61  
62  
63  
64  
65

1 vegetated marshes have a typical elevation of between 0.25 and 0.30 m, comparable to the mean  
2 value of the 1927 survey (Favero et al., 1992; Albani et al., 2001; Bonometto, 2005; Silvestri et  
3 al., 2005; Marani et al., 2007). The elevation of the saltmarshes is important for the volumetric  
4 calculations. However, given the lack of consistency in the altimetric measuring techniques used  
5 in the three surveys, the saltmarshes were converted to rasters with a constant elevation equal to  
6 the mean value of the 1927 survey, i.e., 0.24 m.  
7  
8  
9  
10

11 The three rasters were then reclassified to analyze the frequency distribution of the bathymetric  
12 categories. Fourteen classes were chosen following a classification used by Rusconi (1987) in his  
13 analysis of the 1927 and 1970 maps. To perform these analyses the three bathymetric maps were  
14 considered as “snapshots” of the lagoon at the time, so they were corrected only for differences  
15 between the sea-level reference datum used and the mean sea level at the time of the soundings.  
16 Only the 1927 map was corrected, by 6 cm. To calculate volumetric changes, two difference  
17 rasters were produced by a MapAlgebra operation using the ArcGIS “Raster Calculator” tool.  
18 The bathymetric values of the 1927 grid were subtracted from the 1970 values and the values of  
19 the 1970 grid were subtracted from the 2002 values, generating two raster maps of depth  
20 differences with the same resolution as the input maps, enabling a detailed assessment of the  
21 morphological changes occurring during the last 75 years. The final maps were corrected for  
22 datum and subsidence for 1927 and only for subsidence in the period between 1970 and 2002 as  
23 calculated by Brambati et al. (2003).  
24  
25  
26  
27  
28  
29  
30  
31  
32  
33  
34  
35  
36  
37  
38  
39  
40  
41  
42  
43

#### 44 *3.4.3 Geostatistics of sediment data*

45 The 1970 and 2002 sedimentological datasets consisted of two vectorial (point) layers containing  
46 17 intervals of grain-size. An IDW (Inverse Distance Weighted) interpolation was executed for  
47 each interval, obtaining 34 grids with 10m resolution cells, representing the spatial distribution  
48 of specific grain-size dimensions throughout the lagoon. Differences between the sedimentary  
49 maps of 2002 and 1970 were obtained by subtracting each 1970 map grid from its corresponding  
50 2002 map grid.  
51  
52  
53  
54  
55  
56  
57  
58  
59  
60  
61  
62  
63  
64  
65

## 4. Results and discussion

### 4.1 Morphological transformations

The morphologies of the Lagoon of Venice in 1927, 1970 and 2002 are shown in Fig. 3. The morphology is typical of a coastal lagoon, where water exchanges with the sea occur through three main tidal inlets. A complex network of channels has developed in the lagoon with a main channel and reaching the inner lagoon through secondary and then higher order channels (creeks). Marshes are found mainly in the inner parts of the lagoon. A significant amount of sediment in the northern basin is the result of rapid settling of suspended particles in estuarine areas characterised by freshwater inputs from the Silone, Dese and Osellino rivers, which account for about 46% of the total riverine inputs of suspended matter to the lagoon (Zonta et al., 2001). A significant area of marsh have also formed by sedimentation along the edges of the channel network (i.e. levees), as a result of the abrupt morphological, and thus hydrodynamic, contrast between the channels and the adjacent tidal flats.

#### **Insert Figure 3**

Two main phenomena are easily discernible from Figure 3 and Table 2 a, b ,c: the diminution in area of the saltmarshes, which decreased by more than 50% from 68 km<sup>2</sup> in 1927 to 32 km<sup>2</sup> in 2002, and the progressive deepening of the lagoon, with an increase in the area of subtidal flats between -0.75 and -2.00 m deep, from 88 to 206 km<sup>2</sup>, during the same period.

Evidence of transgression is seen in the enlargement of subtidal flats deeper than -1.2 m (Fig. 3), which represent the remnant of the ancient depressions and ponds of the former Venetian alluvial plain, over which the early lagoon formed during the mid-Holocene highstand (Fontana et al., 2004). In 1927 these depressions had an area of up to 23 km<sup>2</sup> and a mean depth of -2.1 m. By 1970, relative sea-level rise had caused this area to double in size, though the average depth fell to -1.6 m. This shallower mean depth is due to the contribution of ca. 22 km<sup>2</sup> of flooded subtidal flats, formerly between -1.00 m and -1.25 m.

1 In 2002, the mean depth was still 1.6 m, although the area of subtidal flats deeper than -1.2 m  
2 was 105 km<sup>2</sup>. Since relative sea level did not change significantly between 1970 and 2002, this  
3 further doubling of the area of deep subtidal flats indicates erosion due to enhanced  
4 hydrodynamic forcing.  
5

6  
7  
8 The deepening of the lagoon affected mainly the southern sub-basins C and D, and only part of  
9 basin B, south of the town of Venice, as already shown by Molinaroli et al. (2009) for the 1970-  
10 2002 period. The distribution of area changes (losses and gains) of the different elevation  
11 categories within the lagoon (Table 2 b, c) and within each sub-basin was significantly different  
12 in the two periods. During 1927-70, the greatest area reductions were seen in the saltmarshes and  
13 intertidal flats. The area expansion of the other categories (below -0.75 m) is related to depth  
14 increases, as for the subtidal zones, while for the channels, to the effects of the large scale  
15 excavations carried out in the industrial area. Therefore 0.75 m is the fulcrum depth (i.e. the  
16 depth which separates negative from positive area changes) of the morphological adaptation of  
17 the lagoon to relative sea-level rise caused by the combined effects of eustatism and subsidence.  
18  
19  
20  
21  
22  
23  
24  
25  
26  
27  
28  
29  
30  
31

32 The following period (1970-2002) saw the enhancement of erosion, leading to an expansion of  
33 subtidal flats below -1 m. In contrast, the categories affected by losses were mainly subtidal flats  
34 at a depth of between -0.5 m and -1 m, the latter depth becoming the new fulcrum of  
35 morphological adaptation of the lagoon system.  
36  
37  
38  
39  
40  
41

42 For sub-basin C, erosion gave rise to an increase of 26.7 km<sup>2</sup> in the area of subtidal flats below -  
43 1.5 m, which is currently the greatest modal depth of the four sub-basins of the LV, and more  
44 than 75 cm deeper than the modal depth of the same sub-basin in 1927.  
45  
46  
47  
48

49 The frequency distribution of the areas as a function of elevation in 1927, 1970 and 2002, were  
50 calculated for the whole lagoon and for each of the sub-basins A to D (Fig. 4). The frequency  
51 curves of the three periods for the whole LV showed a clear shift in the mode from a value of -  
52 0.62 m in 1927, to -0.87 m in 1970, and -0.88 m in 2002. A similar shift in bathymetry was  
53 observed by Fagherazzi et al. (2006) when comparing the 1901 and 2000 lagoonal morphologies  
54  
55  
56  
57  
58  
59  
60  
61  
62  
63  
64  
65

of the southern lagoon. These authors showed that shallow tidal basins (such as the Lagoon of Venice) are characterised by extensive tidal flats and saltmarshes that lie within specific ranges of elevations, between which intermediate elevations ( $\pm 0.25$  m) are less frequent due to their inherent instability as a result of fetch (Fagherazzi et al., 2007). With high deposition rates – such as those of 1901 – the most frequent tidal flat elevation was around -0.50 m, which tended to shift towards lower elevations when sediment availability was reduced (Fagherazzi et al., 2006; Marani et al., 2007).

Despite the difficulties of comparison between Fagherazzi et al. (2006) and the authors frequency analysis of lagoon elevations (since the studied surfaces are not coterminous), a modal elevation was also observed for the entire lagoon of ca. 0.6 m in 1927. The slight shift from the previous value of -0.50 m during 1901, may reflect reduced sediment input due to reclamation for the first industrial zone in the 1930s and the damming of rivers in the 1920s. The significant additional shift towards -0.87 m by 1970 is related to several reclamations (the 2nd and 3rd industrial zones, airport and housing in Mestre), together with the dredging of sediment for the Malamocco-Marghera ship canal, which was mostly disposed of on land. The final shift towards the value of  $\sim 0.90$  m (seen in 2002) is not so evident as in the previous period, but looking at the evolution of the individual sub-basins, it coincides with the subtidal flat erosion phase proposed by Defina et al. (2007). According to these authors, in a “starved” lagoon the instability of the tidal flats inside basins with large open fetch will ultimately lead to a smooth horizontal bottom with increased depths of up to 2.0 – 2.5 m. This is clearly seen in the Malamocco and Lido sub-basins, where the modal depth is 1.75 m and 1.12 m respectively, both significantly deeper than 1970. This means that abrupt change has taken place since the large-scale submergence of the largest open basin of the lagoon, which caused increased erosion due to wave-induced currents during strong NE (*Bora*) wind events (Cavaleri, 1980; Fagherazzi et al., 2007).

By contrast, during the period 1927-1970, the mean depth in basin A changed by the same order as that of the relative sea-level rise. After 1970 no significant morphological changes occurred



confirming that a complex and mature lagoon morphology inhibits the effect of wave-induced currents by *Bora* winds to cause erosion.

**Insert Table 2**

**Insert Figure 4**

#### 4.2 Historical deposition, stability and erosion

The differences in bed elevation for the three data sets are presented in the form of erosion maps (Fig. 5) subdivided into four categories: (1) severe erosion (<-0.5 m difference), (2) moderate erosion (difference between -0.1 and -0.5 m), (3) stability and (4) deposition. Stability corresponds to the range  $\pm 0.1$  m, and deposition corresponds to cells with deposition values greater than 0.1 m.

**Insert Figure 5**

##### 4.2.1. Bathymetric chart comparison: 1927-1970

15% of the lagoon is characterized by severe erosion, 29% by moderate erosion, 34% is stable and 22% is depositional (fig. 5). The areas affected by severe erosion are concentrated mostly in the channels, mainly the Malamocco-Marghera ship canal (the “Oil Canal”) and the whole of the industrial area with its canals and docks, which were excavated in the late 1960s. The areas affected by moderate erosion are mostly tidal flats. Stable areas are evenly distributed across saltmarshes and tidal flats. Deposition is seen in many channels and on some intertidal flats.

The dominant factor driving morphological transformation in the 1927-1970 interval was subsidence, which had a significant human-induced component (c.f. 2.2 and 3.1). Most of the areas of severe erosion coincide with the Oil Canal, Vittorio Emanuele Canal and the industrial docks, from which about 40 Mm<sup>3</sup> of sediment was dredged. The other affected areas were the saltmarshes, which by 1970 had been reduced to about half the surface area they occupied in 1927, with a loss of 25 Mm<sup>3</sup>. A common phenomenon throughout the lagoon was the erosion of the main channels while the secondary channels were characterised by deposition, with some of

1 the material coming from the erosion of the nearby tidal flats and saltmarshes which suffered  
2 moderate erosion. This process is mainly apparent in the open lagoon, especially in the Lido and  
3 Malamocco sub-basins (B and C), while in the more protected areas where saltmarshes prevail  
4 (the Treporti and western Malamocco sub-basins), the movements of sediment are more  
5 complex. In the lagoon as a whole, tidal flat erosion involved the movement of  $66 \text{ Mm}^3$ , of  
6 which  $17 \text{ Mm}^3$  was deposited in the channels. On average, the lagoon floor deepened by about 7  
7 cm, while the mean depth of the channels decreased by 5 cm.

8 The individual sub-basins evolved differently. In the Treporti basin (A), tidal flats and channels  
9 were almost stable (-1 cm and 0 respectively), in the Chioggia sub-basin (D), both tidal flats and  
10 channels deepened (by 4 and 5 cm respectively). The Malamocco (C) and Lido (B) sub-basins  
11 suffered the highest erosion of tidal flats (deepening by 10 and 9 cm respectively). Sub-basin C  
12 also saw the highest rate of deposition in channels (15 cm) followed by sub-basin B (7 cm). In  
13 the Malamocco sub-basin (C), the high rate of deposition in channels is due to the filling-in of a  
14 large meander, which was abandoned after the dredging of the Oil Canal.

#### 15 *4.2.2. Bathymetric chart comparison: 1970-2002*

16 The human activities that caused significant subsidence during the 1950s and 1960s were  
17 stopped in the 1970s but natural subsidence continued to influence the morphology of the  
18 lagoon. Erosion was severe in  $69 \text{ km}^2$  (17% of the total area), concentrated particularly in the  
19 area around the Malamocco inlet (sub-basin C,  $38 \text{ km}^2$ ) and Chioggia inlet (sub-basin D,  $16$   
20  $\text{km}^2$ ). Moderate erosion affected 32% of the lagoon, especially in large areas to the north and  
21 south of the city of Venice (sub-basin B). Deposition and stability (affecting 28% and 23% of the  
22 entire lagoon respectively) prevailed in the Treporti and Lido sub-basins and were concentrated  
23 especially in the inner part of the lagoon, saltmarshes and surrounding intertidal flats (fig. 5).

24 The main morphological process in the 1970-2002 period was an extensive deepening, not due to  
25 subsidence, but to serious erosion. The entire area from the island of Venice to Malamocco inlet  
26 was characterised by widespread erosion of tidal flats, corresponding to  $\sim 40 \text{ Mm}^3$  of sediment

(~70% of total erosion), concentrated around the previously dredged Malamocco-Marghera ship canal. Throughout the lagoon, channels (especially the minor ones) experienced deposition involving movement of ~20Mm<sup>3</sup> of sediments from adjacent eroded tidal flats, which produced a simplification of the lagoon's morphological structure. The seaward inlets showed an erosional tendency at Malamocco and Chioggia and deposition at Lido. The process of saltmarsh erosion, significant during the 1927-1970 period, continued in the following 30 years with a loss of ~7 km<sup>2</sup> (~ 9 Mm<sup>3</sup>), which was partially compensated by the construction of ~4 km<sup>2</sup> of artificial saltmarshes (~3Mm<sup>3</sup>). As in the 1927-1970 period, the sheltered areas on the landward side of the lagoon were the most stable and were characterised by deposition.

Subaqueous areas deepened by an average of ~19 cm in the lagoon as a whole, with significant differences between sub-basins. Sub-basin A was almost stable, whereas B, C and D saw average depth differences of -9 cm, -40 cm and -13 cm respectively. Almost 15 km<sup>2</sup> of channels accumulated sediments, and became ~90 cm shallower than previously on average, while 8 km<sup>2</sup> of tidal flats were dredged. Channels were characterised by both deposition and erosion, resulting in an average deposition of ~40 cm of sediments.

#### *4.2.3 Continuity of erosion/deposition processes during the period 1927–2002*

The changes of sediment volume described above were combined to calculate the average rates of deposition and erosion and evaluate the continuity of deposition and erosion processes through the two examined periods (Fig. 5).

The 75-year area-weighted mean erosion rate for the entire Lagoon was 0.35 cm y<sup>-1</sup>, while that of the Malamocco-Marghera sub-basin was twice as high (~ 0.7 cm y<sup>-1</sup>).

Comparison of the two difference maps reveal approximately 90 km<sup>2</sup> of the LV characterized by continuous erosion (~1.5 cm y<sup>-1</sup>) throughout the 75-year period, and 135 km<sup>2</sup> of permanently stable or depositional areas. In contrast, 180 km<sup>2</sup> of the LV saw a change in tendency in the second period, either towards instability (becoming erosional) or stability (becoming

depositional). Thus, almost one-half of the lagoon experienced continuously high erosion, with a severe increase in the final thirty-two years.

More than 35 km<sup>2</sup> of tidal flats situated around previously dredged channels in the Malamocco and Chioggia sub-basins changed from stable or depositional conditions (0-1 cm y<sup>-1</sup>) to severe erosion (3.4 cm y<sup>-1</sup>), with a total deepening of ~50cm. In contrast, nearly 30 km<sup>2</sup> of channels characterised by severe erosion or dredging during the 1927-1970 period showed strong deposition in the following 32 years, with erosion rates changing from -3.5 cm y<sup>-1</sup> to +3 cm y<sup>-1</sup>.

The acceleration of erosion in the central part of the lagoon is a well-known fact, although there is debate as to the causes. The already-mentioned hypothesis of Defina et al. (2007) regarding the natural deepening of lagoons with long wind fetch when lacking new sedimentary inputs could be the principal cause, but it does not explain the acceleration. A concomitant factor is suggested by Sfriso et al. (2005), who stressed the extraordinary and progressive increase in sediment suspension and removal from the tidal flats of the LV since the early 1990s due to the intensive fishing involving mechanical dredging for Manila clams.

Continuous re-suspension and alteration of the physical properties of the bottom sediment could be responsible for erosive processes causing loss of fine material from the tidal flats. These processes have markedly accelerated the deepening. The reduction of the macroalgal beds – both before and after the start of clam fishing by means of disruptive techniques – has also significantly contributed to the increase in sediment re-suspension and redistribution, favouring a loss of material and homogenisation of the grain-size and density of the surface sediment (Sfriso et al., 2005).

#### *4.3 Sedimentary budgets and the mass balance of the lagoon*

Studies of the evolution of recent sediment deposits in the LV are fragmented and provide information which is not readily comparable. In some cases, the erosion/sedimentation data are ambiguous since they do not make a distinction between the current status of the phenomenon and/or its evolution over the past few decades (Degetto and Cantaluppi, 2004). In addition,

several sources of uncertainty occur when attempting to calculate a sediment budget on decadal time scales using different methods, concerning of different temporal scales and accuracies. MAV-CVN (1996) reported an average sediment loss of about  $1 \times 10^6 \text{ m}^3 \text{ year}^{-1}$ , by analysing variations in lagoonal sediments over the previous 20 years, excluding eustatism and subsidence. Pillon et al. (2003) compared bathymetric maps from 1930, 1970 and 1990, and showed a similar average yearly sediment loss ( $\sim 1 \times 10^6 \text{ m}^3 \text{ y}^{-1}$ ). Sarretta (2007) calculated a net removal of sediments of  $0.9 \pm 0.1 \times 10^6 \text{ m}^3 \text{ y}^{-1}$  between 1970 and 2000, and Molinaroli et al. (2009) have recently made a detailed comparison of 1970 and 2000 bathymetric charts, together with a comparison of sediment grain sizes, showing marked changes in both morphology and sedimentation.

#### 4.3.1 Volumetric differences through bathymetric comparison

Using the maps in Fig. 3 a detailed calculation of the sediment budget was made for the two periods 1927-1970 and 1970-2002. The digitized bathymetric data were used to directly calculate the sediment volume changes between the surveys in each of the subareas. Table 3 shows all relevant data for calculating the sediment budget of the LV in the two studied periods, and Fig. 6 shows the eroded and deposited material, together with an estimate of the sediment disposed either outside the lagoon or lost through the three inlets.

**Insert Figure 6**

**Insert Table 3**

In the first period (1927-1970), dredging extracted an estimated  $60 \text{ Mm}^3$  of material, and erosion of saltmarshes and tidal flats produced an additional  $34 \text{ Mm}^3$  ( $18+16$ ), making a total of  $94 \text{ Mm}^3$ . All the dredged material was disposed of outside the lagoon, approximately  $35-45 \text{ Mm}^3$  on land and the remaining  $15-25 \text{ Mm}^3$  dumped into the sea outside the lagoon. Of the eroded material,  $21 \text{ Mm}^3$  was deposited inside the lagoon, either in channels ( $17 \text{ Mm}^3$ ) or on saltmarshes ( $4 \text{ Mm}^3$ ) and the remaining  $13 \text{ Mm}^3$  were lost seaward through the inlets. The total sediment removal

1 from the lagoon in forty-three years was thus  $73 \text{ Mm}^3$  ( $\sim 1.7 \text{ Mm}^3 \text{ y}^{-1}$ ), of which the flux to the  
2 sea through the inlets was  $13 \text{ Mm}^3$ , i.e.  $\sim 0.3 \text{ Mm}^3 \text{ y}^{-1}$ , almost equally distributed among the four  
3 sub-basins.  
4

5  
6 In the second period (1970-2002) dredging operations extracted an estimated  $11 \text{ Mm}^3$  of  
7 material, whilst erosion of saltmarshes and tidal flats lost an additional  $61 \text{ Mm}^3$ , making a total  
8 of  $72 \text{ Mm}^3$ . Approximately  $3 \text{ Mm}^3$  of the dredged material was re-used to construct artificial  
9 saltmarshes and the remainder ( $8 \text{ Mm}^3$ ) was disposed of (on land). Of the eroded material, 35  
10  $\text{Mm}^3$  was deposited either in the channels ( $32 \text{ Mm}^3$ ) or on the saltmarshes ( $3 \text{ Mm}^3$ ). The total  
11 sediment removal from the lagoon in thirty-two years was thus  $34 \text{ Mm}^3$  ( $\sim 1 \text{ Mm}^3 \text{ y}^{-1}$ ), of which  
12 the flux to the sea was  $26 \text{ Mm}^3$ , i.e.  $\sim 0.8 \text{ Mm}^3 \text{ y}^{-1}$ , two-thirds of which was from sub-basin C. In  
13 this period sub-basin A experienced a net gain in sediments, either from the small rivers or from  
14 the Treporti channel at the Lido inlet.  
15  
16  
17  
18  
19  
20  
21  
22  
23  
24  
25  
26

#### 27 4.3.2. Lagoon/sea interchanges

28 Direct measurements of the total mass of sediment input and output through the inlets have a  
29 high level of uncertainty. Contrasting data has recently been published, ranging from  $\sim 300 \cdot 10^3$   
30  $\text{ton y}^{-1}$  (Bianchi et al., 2004) to  $\sim 4\text{--}500 \cdot 10^3 \text{ ton y}^{-1}$  (Defendi et al., this issue) to  $\sim 600 \cdot 10^3 \text{ ton y}^{-1}$   
31 (Chiarlo and Fornasiero, 2005). Those estimates refer to the present situation.  
32  
33  
34  
35  
36  
37  
38  
39

40 Table 4 shows the sediment budget subdivided for the four sub-basins. As in Fig. 6, it is derived  
41 from comparison of bathymetric chart. The rate of sediment loss to the sea has been transformed  
42 from  $\text{m}^3$  to tons, assuming a uniform density of  $2,650 \text{ kgm}^{-3}$  and 50% porosity, in order to  
43 compare it with published flux data. Data on riverine input are also listed, but only for the more  
44 recent period, since no useful data are available for the period prior to 1970. It can be seen that  
45 not only was the average total yearly loss from the lagoon quite different during the two periods  
46 ( $\sim 400$  and  $\sim 1100 \cdot 10^3 \text{ ton y}^{-1}$ ), but the relative rate of loss from the four sub-basins through the  
47 inlets was also very different. The rates of loss were fairly evenly distributed across the sub-  
48 basins in the period 1927-1970 (between  $30$  and  $150 \cdot 10^3 \text{ ton y}^{-1}$ ), whereas approximately 80%  
49  
50  
51  
52  
53  
54  
55  
56  
57  
58  
59  
60  
61  
62  
63  
64  
65

of all losses from the LV in the period 1970-2002 ( $\sim 1100 \cdot 10^3 \text{ ton y}^{-1}$ ) came from the Malamocco sub-basin alone ( $\sim 900 \cdot 10^3 \text{ ton y}^{-1}$ ), while the northern sub-basins (A and B) were almost stable. In the latter period, river input was negligible for the LV as a whole (less than 3%) but was significant for sub-basin A, which seems to be the only one which has not lost sediment and where river input may have positively affected sedimentation. Inputs could be from the turbid plume of the Piave during flooding and through Lido inlet (see Amos et al., in press). The historical data matches quite well the estimates of Degetto and Cantaluppi (2004), who recently used radiochemical methods based on  $^{210}\text{Pb}$  and  $^7\text{Be}$  to obtain the mass balance of particulate material exchanged at the seaward inlets of the LV. The two radionuclides were assumed to give different temporal indications, i.e., longer for  $^{210}\text{Pb}$  (decades) and much shorter (one-two years) for  $^7\text{Be}$ . The results obtained with  $^7\text{Be}$  were considered reliable enough, albeit strictly limited to the period investigated (1999-2000), and showed an average yearly imbalance (sediment loss) of  $\sim 800 \cdot 10^3 \text{ ton}$  (range 300-1300) from the lagoon as a whole. The central-south lagoon was found to be the most highly eroded ( $\sim 1100 \cdot 10^3 \text{ ton y}^{-1}$ ), while an accumulation of  $\sim 300 \cdot 10^3 \text{ ton y}^{-1}$  was calculated for the northern lagoon. According to Defendi et al (in press), the situation seems to have changed, since their recent surveys suggest that most of the sediment exchange between the LV and the sea ( $\sim 600 \cdot 10^3 \text{ ton y}^{-1}$  in total), is through the Lido inlet ( $\sim 400 \cdot 10^3 \text{ ton y}^{-1}$ ), leaving Malamocco and Chioggia only 10% and 25% of the total budget respectively.

#### **Insert Table 4**

#### *4.4. Relationship between variations in sediment texture and erosion/sedimentation patterns*

Recently, Molinaroli et al. (2009) made a detailed comparison of LV sediment grain-size data from 1970 and 2000. The surficial sediments of the lagoon consist predominantly of clayey silts in both datasets (mean mud content was 75% for 1970 and 68% for 2000, dry weight) (Molinaroli et al., 2007). In both datasets the silt fraction dominates over other fractions, but with a general tendency to decrease between 1970 and 2000, with the exception of basin C. In all sub-

basins, the earlier samples have a lower sand content than the later ones. The 1970 and 2000 samples have a similar clay content, except for sub-basins A and D, where slight differences between the two datasets are observed (Table 4). The latter authors showed that there was a clear increase in sand content from 1970 to 2000 throughout sub-basins C and D, especially towards the landward side. Very high sand content is also evident in 2000 from sub-basin B and around the city of Venice. The sediment of sub-basin A does not show any significant variation (see Fig. 8 in Molinaroli et al., 2009). The authors also presented data on surficial sediments in the form of ternary diagrams based on Flemming's sand/silt/clay ratios (2000). The location of data points within the diagram reflects specific hydrodynamic energy conditions. The sediment composition of the LV is described by a diagonal band that gradually expands towards the silt-clay axis. The textural gradient in sub-basin A shows a shift towards higher silt/clay content between 1970 and 2000, indicating a general decrease in energy in this sub-basin. In sub-basin B, most of the sediments have become richer in sand, while those of sub-basins C and D have become richer in silty sands and very silty sands (see also Fig. 7 in Molinaroli et al., 2009), indicating a general increase in tractive force.

The spatial distribution of differences in sand content (Fig. 7) shows the greatest increases around the city of Venice, especially on the southern side, between the city and the industrial area of Porto Marghera and between the city and the Lido inlet. Significant sand enrichment was also found in the southern part of the lagoon around the watershed between sub-basins C and D. The spatial distribution of differences in clay shows the greatest enrichment in the northern part of the lagoon and towards the landward side, from the airport to the industrial area (see Fig. 1). Other locations in which appreciable enrichments are found are located in the southern lagoon.

**Insert Table 5**

**Insert Figure 7**



1 In order to explore the relationship between variations in sediment texture and  
2 erosion/sedimentation patterns six representative sub-areas with different erosion/deposition  
3 characteristics were selected and the average grain-size data for each of them was calculated  
4 (Fig. 8). The average differences between three grain size intervals (<8, 8-63, and >63  $\mu\text{m}$ ) in  
5 1970 and 2002 were calculated and represented by histograms (Fig. 8). The six selected areas  
6 cover more than 120  $\text{km}^2$  and show a volume of removed sediment of 26  $\text{Mm}^3$ , accounting for  
7 almost one-third of the area and the sediment budget of the LV.  
8  
9

10  
11  
12  
13  
14  
15  
16 **Insert Figure 8**  
17  
18  
19  
20

21 **Insert Table 6**  
22  
23

24 There has been deposition of fine particles in the northern sub-basins (A and B-north) where  
25 there is still some riverine input from the turbid plume of the Piave during flooding and through  
26 Lido inlet (see Amos et al., in review), and winnowing of sand in the watershed between sub-  
27 basins C and D. The calculated sedimentation rates are  $\sim 0.3\text{-}0.4 \text{ cm yr}^{-1}$ . Erosion of fine-grained  
28 material occurred in sub-basins B-south and C, and erosion of sand in part of sub-basin D, around  
29 some of the channels excavated in the 1980s in connection with the Chioggia inlet. In this case  
30 the erosion rates ranged from 0.7 to  $\sim 2.5 \text{ cm yr}^{-1}$ .  
31  
32

33 These data are in agreement with radiochronological investigations conducted in the 1980s and  
34 1990s, which revealed a sedimentation rate of  $0.3\text{-}0.5 \text{ cm yr}^{-1}$  in the more recent deposits  
35 (Donazzolo et al., 1982; Battiston et al., 1985, 1986). Evidence of erosion was reported in the  
36 early 1990s for the southern lagoon and more recently for the central lagoon, between the  
37 industrial area and Venice (Degetto, 1997; Degetto and Cantaluppi, 2004).  
38  
39

40 Bellucci et al (2007) studied five saltmarsh sediment cores taken from around LV and found that  
41 the inventories of excess  $^{210}\text{Pb}$  were slightly higher than those expected from atmospheric  
42 deposition, due to some contribution from sediment re-suspended from tidal flats or eroded from  
43  
44  
45  
46  
47  
48  
49  
50  
51  
52  
53  
54  
55  
56  
57  
58  
59  
60  
61  
62  
63  
64  
65

marsh edges. Average accumulation rates were  $\sim 0.3 \text{ cm y}^{-1}$  (range:  $0.1\text{-}0.4 \text{ cm y}^{-1}$ ), comparable to the average rate of mean sea level rise during the last century in Venice.

The erosion or sedimentation rates at three stations in sub-basin B and one in C were studied by Sfriso et al (2005) between 1989-1999. They showed that all stations in sub-basin B were affected by sediment losses, with mean erosion rates of between  $0.5$  and  $3.6 \text{ cm yr}^{-1}$ , while the other, despite being in the most unstable sub-basin of all (C), showed no significant bathymetric change, due to the sea-grass growing on the bed. The authors stated that their data agreed with the previous indirect estimation of sediment loss, which was based on the number of fishing boats operating in the lagoon on an annual basis.

The deterioration of the lagoon in terms of morphological and thus ecosystem complexity is mainly due to the transgressive effects caused by human-induced subsidence, superimposed on the natural sea-level rise. It has been demonstrated that in a sediment-starved lagoon such as the Lagoon of Venice, tidal flats are characterised by instability due to the effect of wave-induced currents caused by wind acting on large-fetch basins. When morphological complexity and saltmarshes are lacking, this will ultimately lead to a smooth horizontal lagoon floor of  $2.0 - 2.5$  m deep (Defina et al., 2007; Fagherazzi et al., 2006, 2007).

Nevertheless, it does not seem that this phenomenon can alone account for the critical erosion of the Malamocco sub-basin, where the recorded modal depth in 2002 was  $-1.75$  m, i.e. more than one metre deeper than 75 years before.

The southern lagoon experienced the intense impact of clam fishing with illegal mechanical harvesting during the 1990s due to the introduction and spread of the exotic Manila clam. In addition, the Malamocco basin also contains legal Manila clam fishing concessions, which were granted in order to control farming and exploitation. The practice had serious consequences, due to the high number of fishing boats dredging the lagoon bed, which caused re-suspension and alteration of the physical-mechanical properties of the sediment. Thus the increased susceptibility to sediment erosion due to clam fishing/harvesting, combined with

enhanced bottom shear stress due to more powerful wind waves in a deep lagoon basin with a large fetch, could easily explain the unexpected deepening of the southern lagoon.

### **Insert Fig. 9**

Comparison of the area distribution of elevation categories in the four sub-basins today clearly show the striking similarities between the A, B and D sub-basins and the LV as a whole in 1927, 1970 and 2002 respectively (Fig. 10). The current state of the different sub-basins (ontogenesis) reflects the historic evolution of the lagoon as a whole (phylogenesis): thus sub-basin C possibly indicates the future trend of the entire lagoon.

While this is a relatively comprehensive study of historical physical changes, it is incomplete in that the sediment budget is still uncertain. More precise quantification of the modern lagoon sediment budget will require both a better understanding of fluvial input and extraction of dredging and a sediment transport model designed to explain historical changes in the sediment budget. The combination of cartography and modelling used in this study should be applicable to other systems where large changes in morphology have occurred on historical time scales.

## **5. Conclusions**

A detailed GIS-based analysis of bathymetric surveys carried out in the Lagoon of Venice in the periods 1922-1933, 1968-1971 and 1999-2003 was used to reconstruct historical sedimentation patterns. Analysis of available data on bathymetry, morphology and grain-size reveals that large-scale morphological changes have been directly and indirectly caused by human actions, including navigational improvements (docks, dredged navigation channels), urban settlement, industry (water extraction for industrial plants and subsequent subsidence, filling of wetland areas) and exploitation of natural resources (fish-farming, harvesting of clams with mechanical dredges). Lesser changes are attributable to natural erosion and sedimentation.

The main results are as follows:

1. Saltmarsh areas decreased by more than 50%, from 68 km<sup>2</sup> in 1927 to 32 km<sup>2</sup> in 2002.
2. The subaqueous area is progressively deepening, with the modal depth shifting from a value of -0.62 m in 1927 to -0.87 m in 1970 and -0.88 m in 2002. The final change seems negligible for the lagoon as a whole but is the result of a compensation effect between the erosional southern part and the stable-depositional northern part.
3. The deepening is mostly due to the areal expansion of the deepest subtidal flats (between -0.75 m and -2.00 m in depth), from 88 to 206 km<sup>2</sup> during 1927-2002.
4. Depth increases in the 75 year-period mainly affected the Malamocco sub-basin, which increased from -0.64 to -1.75 m on average, followed by Chioggia, from -0.39 m to -0.88 m, and Lido, from -0.65 m to -1.12 m.
5. There has been a net loss of about 110 Mm<sup>3</sup> of sediment from the LV, the majority of which (73 Mm<sup>3</sup>, about 70%) occurred during the first period. A significant amount was lost by direct disposal of dredged sediment outside the LV, either on land or at sea, whilst 39 Mm<sup>3</sup> was lost from the lagoon to the sea throughout the inlets, at an annual average rate of 0.5 Mm<sup>3</sup>.
6. Considering only the net export of lagoon material to the sea, sedimentary budget calculations revealed an alarming acceleration of erosion, from a net sediment loss of 0.3 Mm<sup>3</sup>y<sup>-1</sup> during 1927-1970 to 0.8 Mm<sup>3</sup>y<sup>-1</sup> in 1970-2002. As a consequence, the lagoon was transformed from a highly complex, well-developed microtidal lagoon during the 1930s, to a sediment-starved and subsidence-dominated lagoon in the 1970s, and then to the high energy-dominated, flatter-bottomed and more open (bay-like) environment of today, where the simplified morphology and increased depth of the lagoon bed favour water exchange with the sea, thus weakening its estuarine features.

## Acknowledgements

We thank the Magistrato alle Acque di Venezia for providing data. Mr. George Metcalf revised the English text. We are grateful to Prof. Graham Evans, an anonymous reviewer and the editor Carl L. Amos for their careful review, comments and suggestions. This work was financially supported by a research contract with the former ICRAM (now ISPRA) - Italian Ministry of the Environment and by the FISIR Project "Vector", Research Line 3 (responsible F. Antonioli).

1  
2  
3  
4  
5  
6  
7  
8  
9  
10  
11  
12  
13  
14  
15  
16  
17  
18  
19  
20  
21  
22  
23  
24  
25  
26  
27  
28  
29  
30  
31  
32  
33  
34  
35  
36  
37  
38  
39  
40  
41  
42  
43  
44  
45  
46  
47  
48  
49  
50  
51  
52  
53  
54  
55  
56  
57  
58  
59  
60  
61  
62  
63  
64  
65

## References

- 1 Albani, A.D., Serandrei Barbero, R., 2001. The distribution of surface sediments in the lagoon  
2 of Venice (Italy) in the 1980s. *Atti Istituto Veneto di Scienze Lettere ed Arti* 159, 363–378.  
3
- 4 Apitz S.E., Barbanti, A., Bernstein, A.G., Bocci, M., Delaney, E., Montobbio, L., 2007. The  
5 assessment of sediment screening risk in Venice Lagoon and other coastal areas using  
6 international sediment quality guidelines. *Journal of Soils and Sediments* 7 (5), 326-341.  
7
- 8 Battiston, G., Croatto, U., Degetto, S., Sbrignadello, G. and Tositti, L., 1985. Tecniche  
9 radioisotopiche nella datazione di sedimenti recenti. *Inquinamento* 6, 49-58.  
10
- 11 Battiston, G., Croatto, U., Degetto, S., Sbrignadello, G. and Tositti, L., 1986. Studi sulla  
12 diffusione e distribuzione di inquinanti antropogenici mediante tecniche radioisotopiche di  
13 datazione di sedimenti recenti. *Ambiente Risorse* 1, 81-87.  
14
- 15 Bellucci, L.G., Frignani, M., Cochran, J.K., Albertazzi, S., Zaggia, L., Cecconi G., Hopkins,  
16 H., 2007.  $^{210}\text{Pb}$  and  $^{137}\text{Cs}$  as chronometers for salt marsh accretion in the Venice Lagoon  
17 and links to flooding frequency and climate change. *Journal of Environmental  
18 Radioactivity* 97, 85-102.  
19
- 20 Bianchi, F., Ravagnan, E., Acri, F., Bernardi-Aubry, F., Boldrin, A., Camatti, E., Cassin, D.,  
21 Turchetto, M., 2004. Variability and fluxes of hydrology, nutrients and particulate matter  
22 between the Venice Lagoon and the Adriatic Sea. Preliminary results (years 2001–2002).  
23 *Journal of Marine Systems* 51, 49-64.  
24
- 25 Bonometto, L., 2005. Functional characteristics of salt marshes (*barene*) in the Venice  
26 Lagoon and environmental restoration scenarios. In: Fletcher, C.A., Spencer, T. (Eds.),  
27 *Flooding and environmental challenges for Venice and its lagoon: state of knowledge.*  
28 Cambridge University Press, Cambridge, UK, pp. 473-486.  
29
- 30 Brambati, A., Carbognin, L., Quaia, T., Teatini, P., Tosi, L., 2003. The Lagoon of Venice:  
31 geological setting, evolution and land subsidence. *Episodes* 26, 264-268.  
32
- 33 Bromberg Gedan, K., Silliman, B.R., Bertness, M.D., 2009. Centuries of human-driven  
34 change in salt-marsh ecosystems. *Annual Review of Marine Science* 1, 117-141  
35
- 36 Carbognin, L., Teatini, P., Tosi, L., 2004. Eustacy and land subsidence in the Venice Lagoon  
37 at the beginning of the new millennium. *Journal of Marine System* 51, 345-353.  
38
- 39 Cavaleri L., 1980. Sediment transport in shallow lagoons. *Il Nuovo Cimento* 3C (5), 527-540.  
40
- 41 Cavazzoni, S., 1977. Variazioni batimetriche ed idrografiche nella Laguna di Venezia,  
42 intercorse tra il 1933 e il 1971. *Istituto Veneto di Scienze Lettere ed Arti, Rapporti e Studi*  
43 7, 1-18.  
44  
45  
46  
47  
48  
49  
50  
51  
52  
53  
54  
55  
56  
57  
58  
59  
60  
61  
62  
63  
64  
65

- 1  
2  
3  
4  
5  
6  
7  
8  
9  
10  
11  
12  
13  
14  
15  
16  
17  
18  
19  
20  
21  
22  
23  
24  
25  
26  
27  
28  
29  
30  
31  
32  
33  
34  
35  
36  
37  
38  
39  
40  
41  
42  
43  
44  
45  
46  
47  
48  
49  
50  
51  
52  
53  
54  
55  
56  
57  
58  
59  
60  
61  
62  
63  
64  
65
- Cesari, P., Pellizzato, M., 1985. Insediamento nella Laguna di Venezia e distribuzione adriatica di *Rapana venosa* (Valenciennes) (Gastropoda, Thaididae). *Lavori Società Veneta di Scienze Naturali* 10, 3-16.
- Chiarlo, R., Fornasiero, P., 2005. The ADCP measurements + Sediview method: a rigorous approach to estimate solid concentration and solid discharge. 4th ADCPs in Action Users Conference, April 4-6, 2005, San Diego, California (USA).
- Cossu, R., De Fraja Frangipane, E., 1985. Stato delle conoscenze sull'inquinamento della laguna di Venezia. Consorzio Venezia Nuova, Servizio Informativo, Technical Report, (Vol. I-IV), 438 pp.
- Day, J.W., Scarton, F., Rispondo, A., Are, D., 1998. Rapid deterioration of a salt marsh in Venice Lagoon. *Journal of Coastal Research* 14, 583-590.
- Defendi, V., Zaggia, L., Kovačević V., (this issue) Estimating suspended sediment transport from acoustic measurements in the Venice Lagoon inlets,.
- Defina, A., Carniello, A., Fagherazzi, S., D'Alpaos, L. 2007. Self-organization of shallow basins in tidal flats and salt marshes. *Journal of Geophysical Research* 112, F03001, doi:10.1029/2006JF000550.
- Degetto, S., 1997. Passato e presente dell'inquinamento lagunare attraverso l'analisi di carote sedimentarie radiodatate. Proceedings of the Conference "Salvaguardia Ambientale e Sviluppo Sostenibile", Università Cà Foscari, Venice, Italy, pp. 36-57.
- Degetto, S., Cantaluppi, C., 2004. Radiochemical methodology for the determination of the mass balance of suspended particulate materials exchanged at the inlets of the Venice Lagoon. *Journal of Marine System* 51, 77-94
- Donazzolo, R., Orio, A, Pavoni, B., 1982. Radiometric dating and pollutants profiles in a sediment core from the Lagoon of Venice. *Oceanologica Acta* 4 Suppl., 101-106.
- Dorigo L., 1961. Le osservazioni mareografiche in Laguna di Venezia. Istituto Veneto di Scienze Lettere ed Arti. Commissione di Studio dei Provvedimenti per la Conservazione e Difesa della Laguna e della Città di Venezia, Rapporti Preliminari I, Stamperia di Venezia, 11-38.
- Fagherazzi, S., Carniello, L., D'Alpaos, L., Defina, A., 2006. Critical bifurcation of shallow microtidal landforms in tidal flats and salt marshes. Proceedings of the National Academy of Sciences of the United States of America, PNAS 103, 8337-8341.
- Fagherazzi, S., Palermo, C., Rulli, M.C., Carniello, L., Defina, A., 2007, Wind waves in shallow microtidal basins and the dynamic equilibrium of tidal flats. *Journal of Geophysical Research* 112, F02024, doi:10.1029/2006JF000572.
- Favero, V., 1992. Evoluzione morfologica e trasformazioni ambientali dalla conterminazione lagunare al nostro secolo. In: Conterminazione lagunare: storia, ingegneria, politica e

1 diritto nella Laguna di Venezia. Proceeding of the Conference “Convegno di studio nel  
2 bicentenario della conterminazione lagunare”, Venice, Italy, 14-16 March 1991, Istituto  
3 Veneto di Scienze Lettere ed Arti, Tipografia La Garangola, Padova, pp. 165-184.

4 Ferla, M., Cordella, M., Michielli, L., 2006. Aggiornamenti sulle osservazioni dei livelli di  
5 marea a Venezia. Agenzia per la Protezione dell’Ambiente e per i Servizi Tecnici, APAT,  
6 Rapporti 69, Technical Report.

7  
8  
9  
10 Flemming, B.W., 2000. A revised textural classification of gravel-free muddy sediments on  
11 the basis of ternary diagrams. *Continental Shelf Research* 20, 1125-1137.

12  
13 Fontana, A., Mozzi, P., Bondesan, A., 2004, L’evoluzione geomorfologica della pianura  
14 veneto-friulana. In: Bondesan, A., Meneghel, M., (Eds.), *Geomorfologia della Provincia di*  
15 *Venezia*. Esedra Editrice, Padova, Italy, pp. 113-138.

16  
17  
18 Gatto, P., Carbognin, L., 1981. The lagoon of Venice: natural environmental trend and man-  
19 induced modification. *Hydrological Sciences Bulletin* 26 (4), 379-391.

20  
21  
22 Guerzoni, S., Tagliapietra, D., 2006. *Atlante della Laguna. Venezia tra terra e mare (Atlas of*  
23 *the Lagoon: Venice between land and sea)*. Marsilio, Venice, 242 pp.

24  
25  
26 Higgins, S.A., Jaffe, B., Fuller, C.C., 2007. Reconstructing sediment age profiles from  
27 historical bathymetry changes in San Pablo Bay, California. *Estuarine Coastal and Shelf*  
28 *Sciences* 73, 165-174.

29  
30  
31 Jaffe, B.E., Smith, R.E., Foxgrover, A.C., 2007. Anthropogenic influence on sedimentation  
32 and intertidal mudflat change in San Pablo Bay, California: 1856–1983. *Estuarine, Coastal*  
33 *and Shelf Sciences* 73, 175-187.

34  
35  
36 Longley, P.A., Goodchild, M., Maguire, D.J., Rhind, D.W., Loble, J., 2001. *Geographic*  
37 *information systems and science*. John Wiley & Sons, Chichester, UK. 454 pp.

38  
39  
40 Marani, M., D’Alpaos, A., Lanzoni, S., Carniello, L., Rinaldo, A., 2007. Biologically-  
41 controlled multiple equilibria of tidal landforms and the fate of the Venice lagoon.  
42 *Geophysical Research Letters* 34, L11402, doi:10.1029/2007GL030178.

43  
44  
45 Ministero Ambiente, 1993. *Protocollo recante criteri di sicurezza ambientale per gli interventi*  
46 *di escavazione, trasporto e reimpiego dei fanghi estratti dai canali di Venezia – 8 Aprile*  
47 *1993*, Venice, Italy, Technical Report.

48  
49  
50  
51 MAV-CVN, 1996. *Studio C.4.5/1. Monitoraggio dello sviluppo di velme e barene. Studio per*  
52 *la formulazione di indirizzi e criteri esecutivi generali. Dati sui sedimenti lagunari.*  
53 *Magistrato alle Acque di Venezia, Consorzio Venezia Nuova, Venice, Italy, Technical*  
54 *Report.*



- 1 MAV-CVN, 1999. Mappatura dell'inquinamento dei fondali lagunari. Studi ed indagini,  
2 relazione finale luglio 1999. Magistrato alle Acque di Venezia, Consorzio Venezia Nuova,  
3 Venice, Italy, Technical Report.
- 4 MAV-CVN, 2004. Attività di aggiornamento del piano degli interventi per il recupero  
5 morfologico in applicazione della delibera del Consiglio dei Ministri del 15 Marzo 2001.  
6 Studi di base, linee guida e proposte di intervento del piano morfologico. Magistrato alle  
7 Acque di Venezia, Consorzio Venezia Nuova, Venice, Italy, Technical Report.
- 8 Molinaroli, E., Guerzoni, S., Sarretta, A., Masiol, M., Pistolato, M., 2009. Thirty-year  
9 changes (1970 to 2000) in bathymetry and sediment texture recorded in the Lagoon of  
10 Venice sub-basins, Italy. *Marine Geology* 258, 115-125.
- 11 Molinaroli, E., Guerzoni, S., Sarretta, A., Cucco, A., Umgiesser, G., 2007. Link between  
12 hydrology and sedimentology in the Lagoon of Venice, Italy. *Journal of Marine System* 68,  
13 303-317.
- 14 Pinder, D.A., Witherick, M.E., 1990. Port industrialization, urbanization and wetland loss. In:  
15 Williams, M., (Ed.), *Wetlands: A Threatened Landscape*, Blackwell, Oxford, UK, pp. 235-  
16 266.
- 17 Pranovi, F., Da Ponte, F., Raicevich, S., Giovanardi, O., 2004. A multidisciplinary study of  
18 the immediate effects of mechanical clam harvesting in the Venice Lagoon. *ICES Journal*  
19 *of Marine Science* 61 (1), 43-52.
- 20 Pranovi, F., Franceschini, G., Casale, M., Zucchetta, M., Torricelli, P., Giovanardi, O., 2006.  
21 An ecological imbalance induced by a non-native species: the Manila clam in the Venice  
22 Lagoon. *Biological Invasions* 8 (4), 595-609.
- 23 Provincia di Venezia, 2000. Piano per la gestione delle risorse alieutiche delle lagune della  
24 provincia di Venezia. Provincia di Venezia, Venice.
- 25 Pillon, S., Fontolan, G., Bezzi, A., Burla, I., Tessari, U., Simeoni, U., Zamariolo, A.,  
26 Tromellini, E., Gabellini, M., 2003. A GIS-based morphological evolution of the Venice  
27 Lagoon. In: *Proc. VI Int. Conf. on Med. Coast. Env. MEDCOAST03*, 2, 1269-1280.
- 28 Ravera, O., 2000. The Lagoon of Venice: the result of both natural factors and human  
29 influence. *Journal of Limnology* 59 (1), 9-30.
- 30 Rusconi, A., 1987. Variazioni delle superfici componenti il bacino lagunare. Ufficio  
31 Idrografico del Magistrato alle Acque, Pubblicazione n. 160, Tipoffset Gasparoni,  
32 Venezia.
- 33 Sarretta, A., 2007. Integrazione di dati granulometrici e informazioni ambientali nella laguna  
34 di Venezia per lo studio degli habitat di fondo. Ph.D thesis, Università Ca' Foscari Venezia  
35 Italy, unpublished.
- 36  
37  
38  
39  
40  
41  
42  
43  
44  
45  
46  
47  
48  
49  
50  
51  
52  
53  
54  
55  
56  
57  
58  
59  
60  
61  
62  
63  
64  
65

- 1 Scarton, F., Day, J.W., Rismondo, A., Lecconi, G., Are, D., 2000. Effects of an intertidal  
2 sediment fence on sediment elevation and vegetation distribution in a Venice (Italy) lagoon  
3 salt marsh. *Ecological Engineering* 16, 223-233.
- 4 Sfriso, A., Facca, C., Marcomini, A., 2005. Sedimentation rates and erosion processes in the  
5 lagoon of Venice. *Environment International*, Special Issue 31, 983-992.
- 6  
7 Silliman, B.R., Grosholz, E., Bertness, M.D., in press. A synthesis of anthropogenic impacts  
8 on North American salt marshes. In: Silliman, B.R., Bertness, M.D., Strong, D., (Eds.),  
9 Anthropogenic Modification of North American Salt Marshes, University of California  
10 Press, Berkeley, CA.
- 11  
12  
13  
14  
15 Silvestri, S., Defina, A., Marani, M., 2005. Tidal regime, salinity and salt marsh plant  
16 zonation. *Estuarine Coastal and Shelf Science* 62, 119-130.
- 17  
18  
19 Vatova, A., 1940. Le zoocenosi della laguna veneta. *Thalassia* 3 (10), 1-28.
- 20  
21  
22  
23 Vatova, A., 1949. Caratteri di alcune facies bentoniche della laguna veneta. *Nova Thalassia* 1  
24 (4), 1-15.
- 25  
26  
27  
28  
29  
30  
31  
32  
33  
34  
35  
36  
37  
38  
39  
40  
41  
42  
43  
44  
45  
46  
47  
48  
49  
50  
51  
52  
53  
54  
55  
56  
57  
58  
59  
60  
61  
62  
63  
64  
65
- Zonta, R., Bettiol, C., Collarini, F., Fagarazzi, O.E., Zaggia, L., Zuliani, A., 2001. DRAIN  
Project - Fresh water and pollutant transfer from the drainage basin to the Venice Lagoon.  
Project Report N. 15B, Venice Italy, pp. 1-61.

## FIGURE CAPTIONS

1  
2 Figure 1 – The Lagoon of Venice and four sub-basins (A to D), separated by broken lines.  
3  
4

5 Figure 2 – ( a) Mean sea level for Venice and Trieste compared to reference *datums*. Moving  
6 averages (11 years) are in bold. (b) Absolute difference in mean sea level between  
7 Venice and Trieste. Sea level data conventionally refer to a plane located 150 cm  
8 below the National Altimetric Network Zero (NANZ).  
9  
10  
11  
12  
13  
14

15 Figure 3 – Colour-shaded bathymetric maps of Lagoon of Venice (from left to right: 1927,  
16 1970; 2002). Dotted red line indicates migration of -1.2 m contour line, showing an  
17 overall increase in depth (progressively darker blue colour). Emergent areas are  
18 indicated in green.  
19  
20  
21  
22  
23

24 Figure 4 – The Distribution of surface areas of specific elevation categories in 1927 ( dotted  
25 line), 1970 (dashed line) and 2002 (solid line) in whole Lagoon of Venice (central  
26 plot) and sub-basins A to D.  
27  
28  
29

30 Figure 5 – Colour shaded sedimentation maps for 1927-1970 (left) and 1970-2002 (centre),  
31 and map of continuity/change in sedimentary regime from first to second period  
32 (right). Severe erosion means altimetric differences of  $<-0.5$  m, moderate erosion  
33 means differences of between  $-0.5$  and  $-0.1$  m, stability means differences within  $\pm$   
34  $0.1$  m, deposition means differences of  $>0.1$  m. Histograms show regimes of the  
35 four sub-basins in the two periods. Continuous erosion was seen mainly in the  
36 subtidal flats. Continuously stable and depositional areas are mainly saltmarshes;  
37 changes towards erosion (instability) result from enlargement of permanent erosion  
38 areas; changes towards deposition result mostly from channel infilling.  
39  
40  
41  
42  
43  
44  
45  
46  
47

48 Figure 6 – The sediment budget for whole lagoon (left:1927-70; right: 1970-2002). Riverine  
49 input was considered negligible. An unknown portion of dredged material was  
50 probably handled more than once. Dashed arrows refer to a negative budget  
51 (erosion or dredging), solid arrows indicate a positive budget (sedimentation).  
52 Numbers inside circles are the sum of dredged (grey) and eroded (black) material  
53 from tidal flats and saltmarshes. Net loss is the result of a balance between eroded  
54 and re-sedimented material.  $20 \text{ Mm}^3$  of dredged sediment were dumped offshore  
55  
56  
57  
58  
59  
60  
61  
62  
63  
64  
65

during 1930-1970, whereas during 1970-2002, dredged material was partially re-used for morphological reconstruction (artificial marshes).

Figure 7 – Differences between 2000 and 1970 in distribution of sand ( $>63 \mu\text{m}$ , left) and clay ( $<2 \mu\text{m}$ , right).

Figure 8 – Grain-size variations from 1970 to 2000 in six sub-areas (areas I, II, V = deposition; II, IV, VI = erosion; see Fig. 5 for colour code). Histograms show combined grain size intervals ( $<8$ ,  $8-63$ , and  $>63\mu\text{m}$ )

Figure 9 – Comparison of area distribution of elevation categories. Above: sub-basins A, B, C and D in 2002; below: whole Lagoon of Venice in 1927, 1970 and 2002. Note similarities between A, B and D and three historic periods. Evolution of different sub-basins (ontogenesis) reflects the historic evolution of whole lagoon (phylogenesis). Sub-basin C may indicate future trend of entire lagoon.

## TABLE CAPTIONS

1  
2 Table 1- Chronology of events recognized as strong factors able to affect structures and processes in  
3 the morpho-bathymetry of LV between 1927 and 2002.  
4  
5  
6

7 Table 2a – Area and areal changes of depth range for 1927, 1970 and 2002; the entire lagoon.  
8

9 Table 2b – Area by depth range for 1927, 1970 and 2002 for each sub-basin  
10

11 Table 2c – Areal changes of depth range for 1927, 1970 and 2002 for each sub-basin  
12  
13  
14

15 Table 3 – Relevant data for the entire lagoonal sediment budget calculation in the two studied  
16 periods. The budgets derive from bathymetric chart comparison. The data on dredged  
17 material disposed of on land was supplied by MAV; the difference indicated was lost through  
18 inlets.  
19  
20  
21  
22  
23

24 Table 4 – The relevant data for calculating sediment budget of each sub-basin during the two studied  
25 periods. Rates of sediment loss to sea were averaged for 43 years and 32 years respectively  
26 and compared with riverine input. The riverine data for period 1970-2002 are from Collavini  
27 et al.(2005) and refer to years 1999-2000.  
28  
29  
30  
31  
32

33 Table 5 – Mean values and ranges (in brackets) of surficial sediment grain-size of tidal flats inside  
34 each lagoonal sub-basin; (after Molinaroli et al., 2009, modified)  
35  
36  
37

38 Table 6– Relevant data for six zones shown in figure 9  
39  
40  
41  
42  
43  
44  
45  
46  
47  
48  
49  
50  
51  
52  
53  
54  
55  
56  
57  
58  
59  
60  
61  
62  
63  
64  
65

Fig. 1

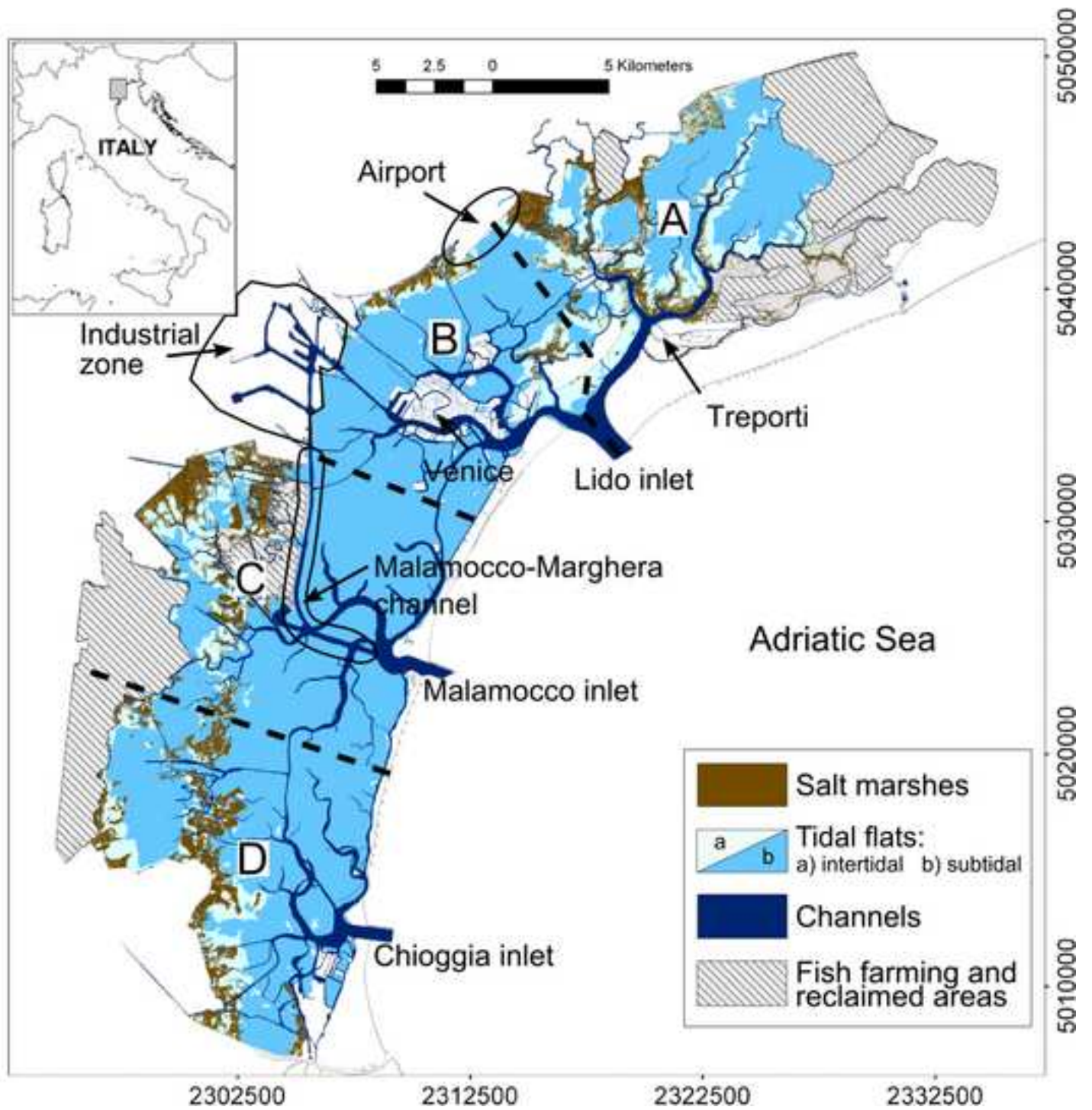




Fig. 2

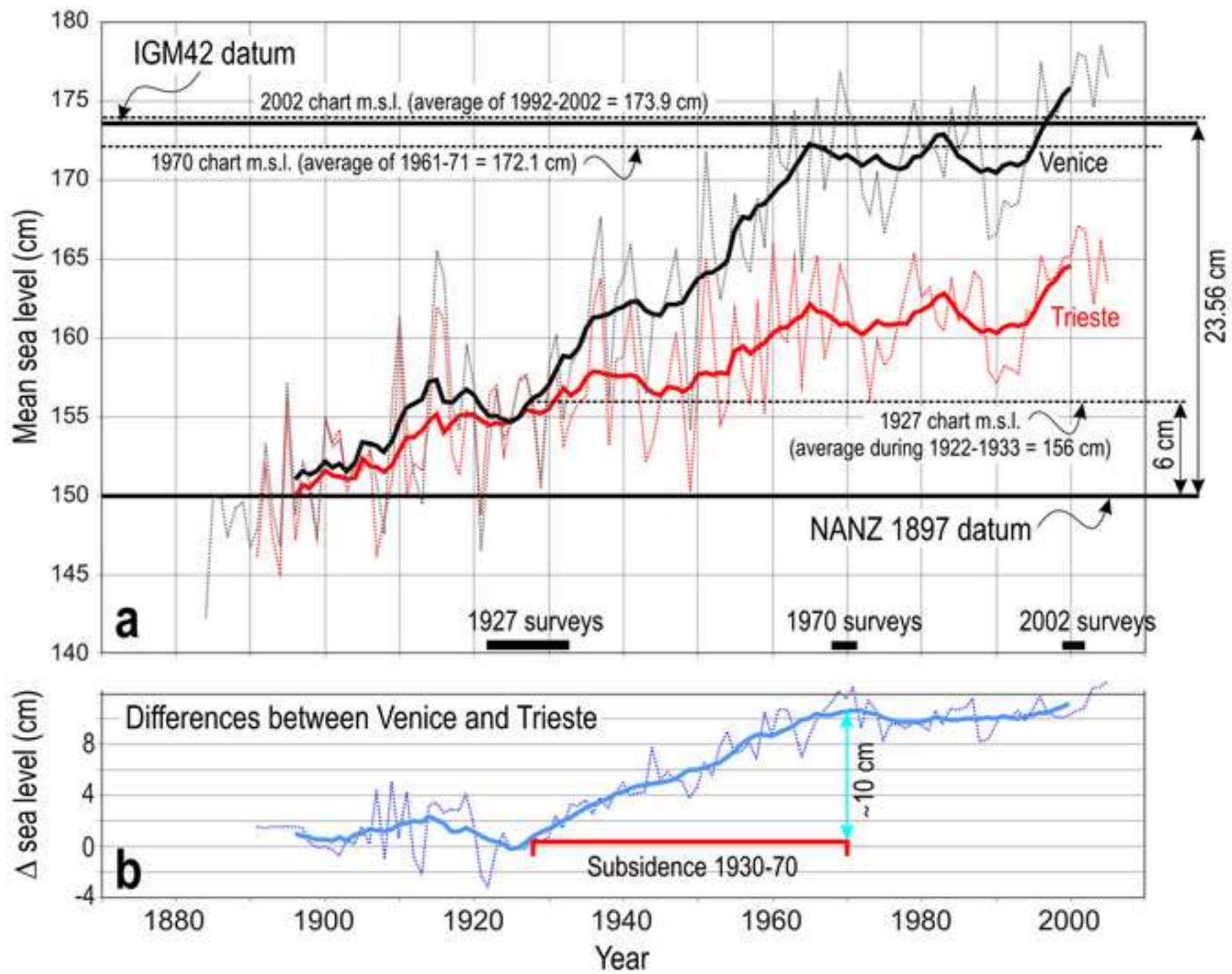


Fig. 3

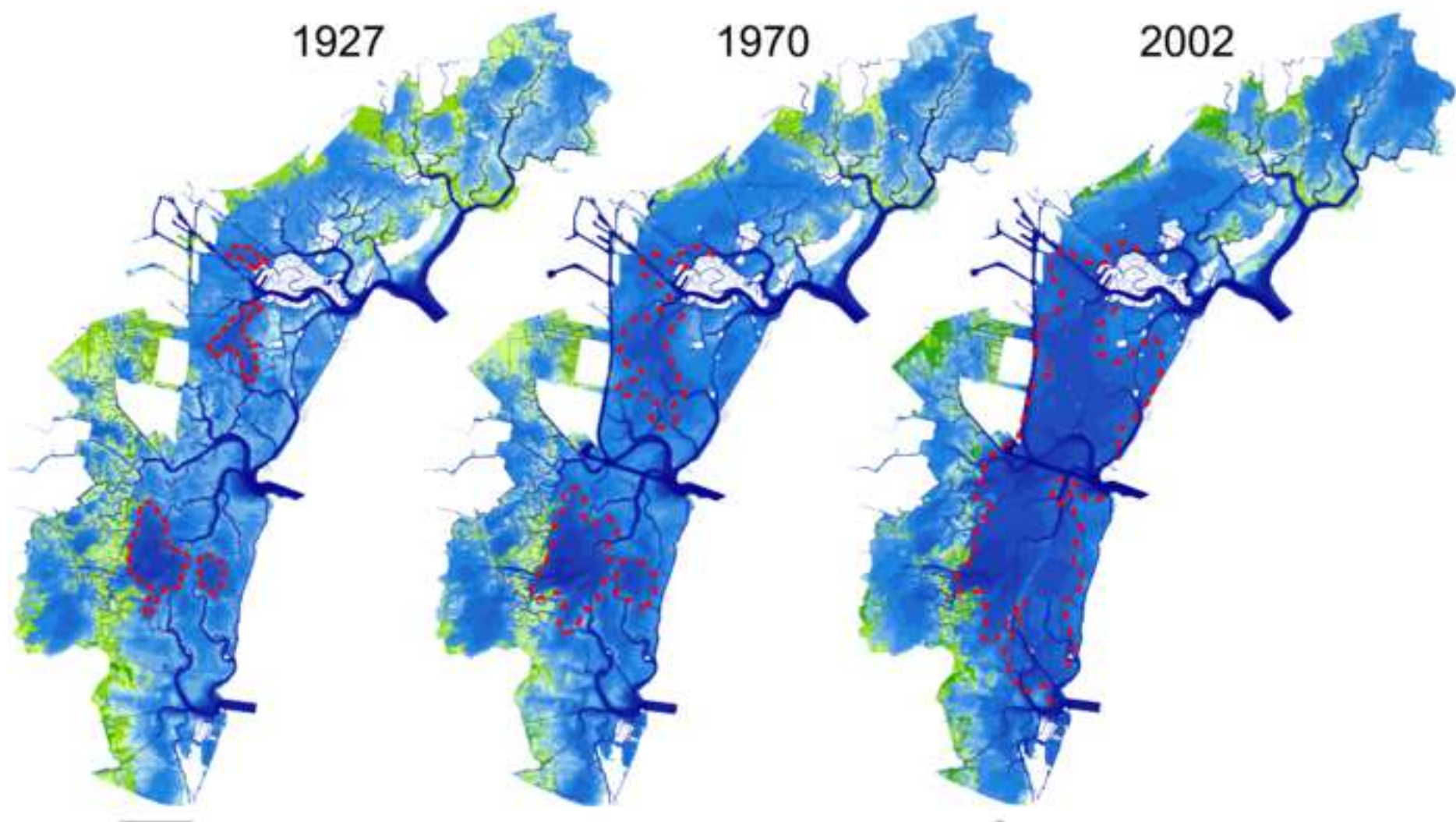




Fig. 4

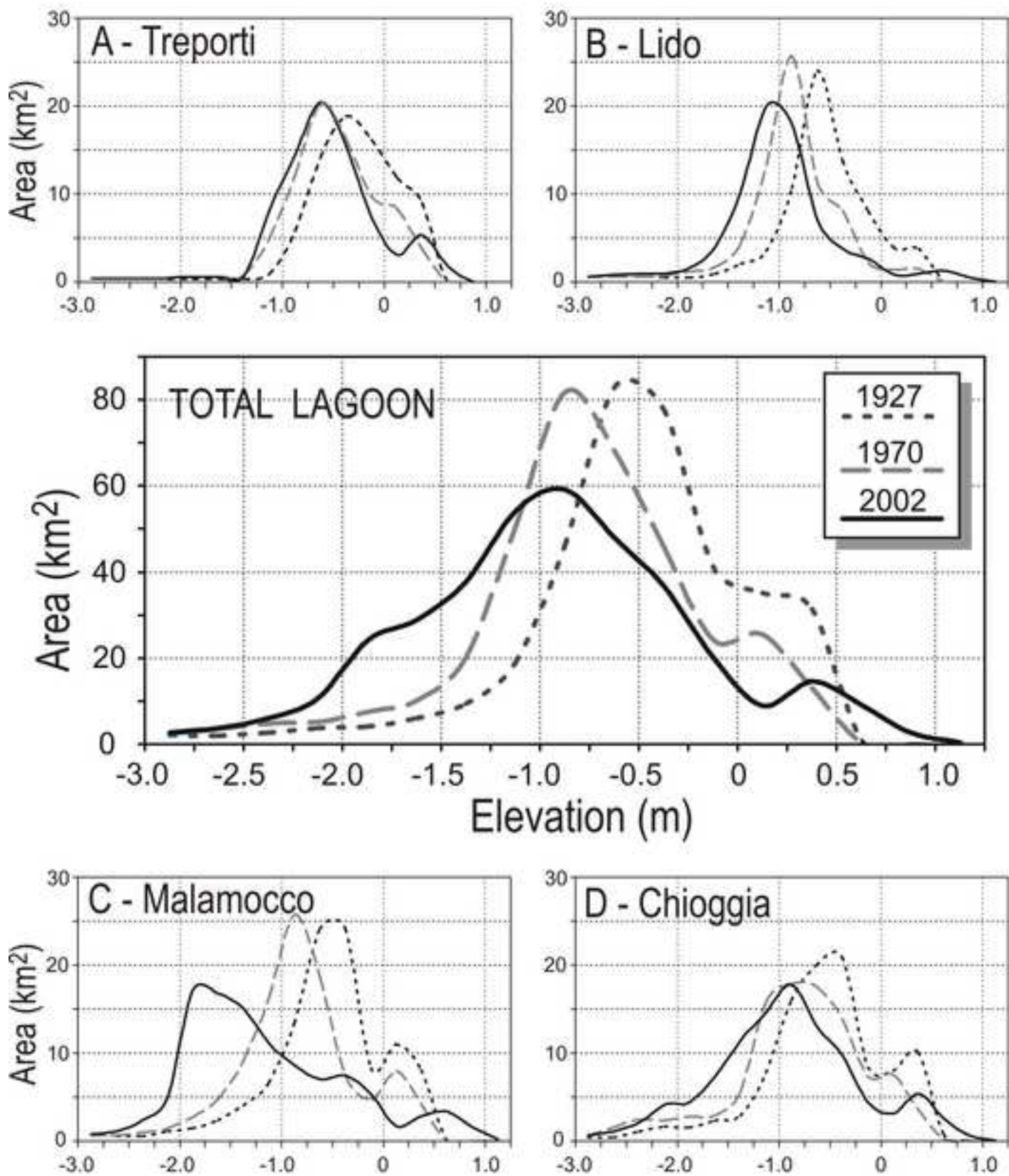


Fig. 5

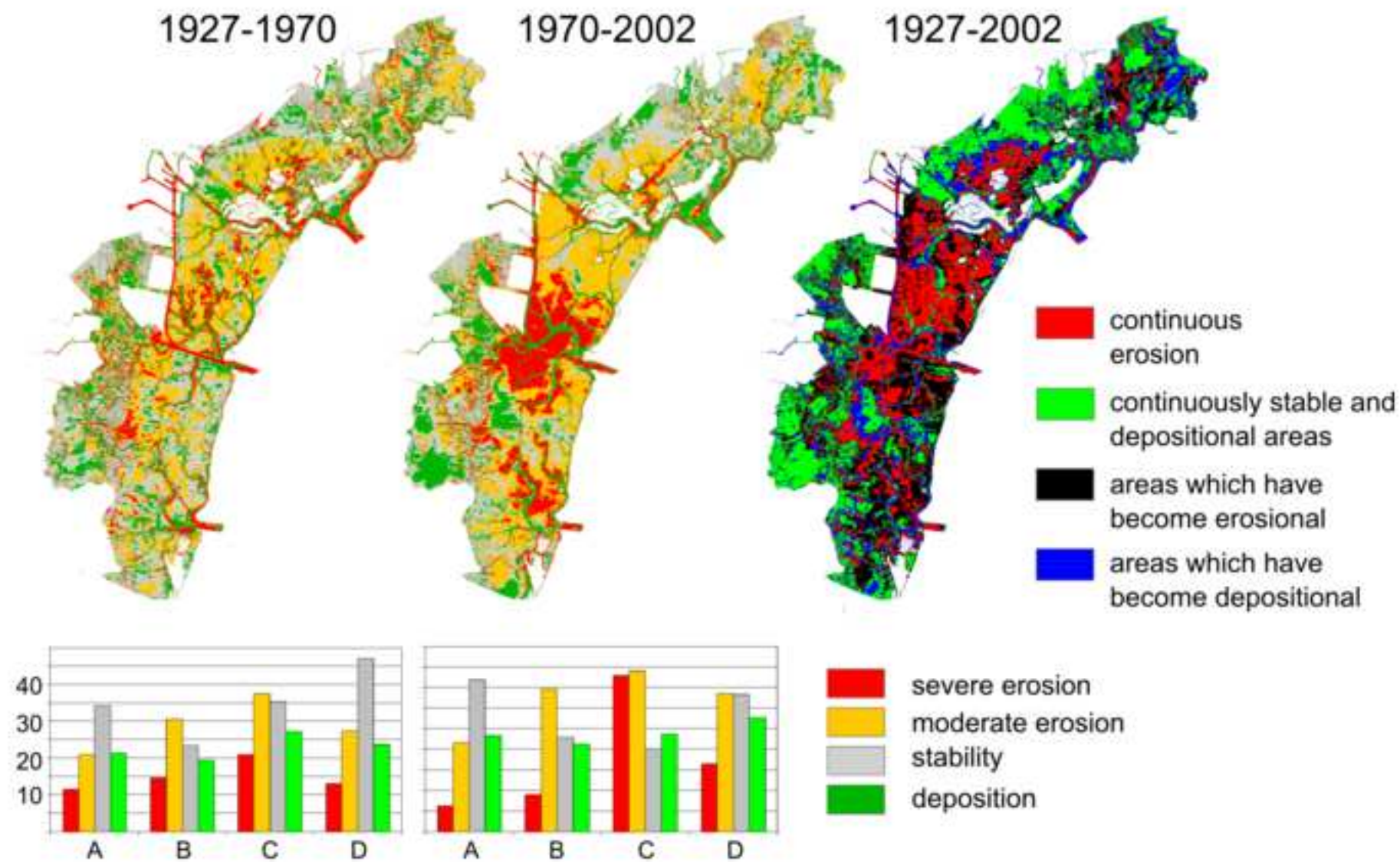




Fig. 6

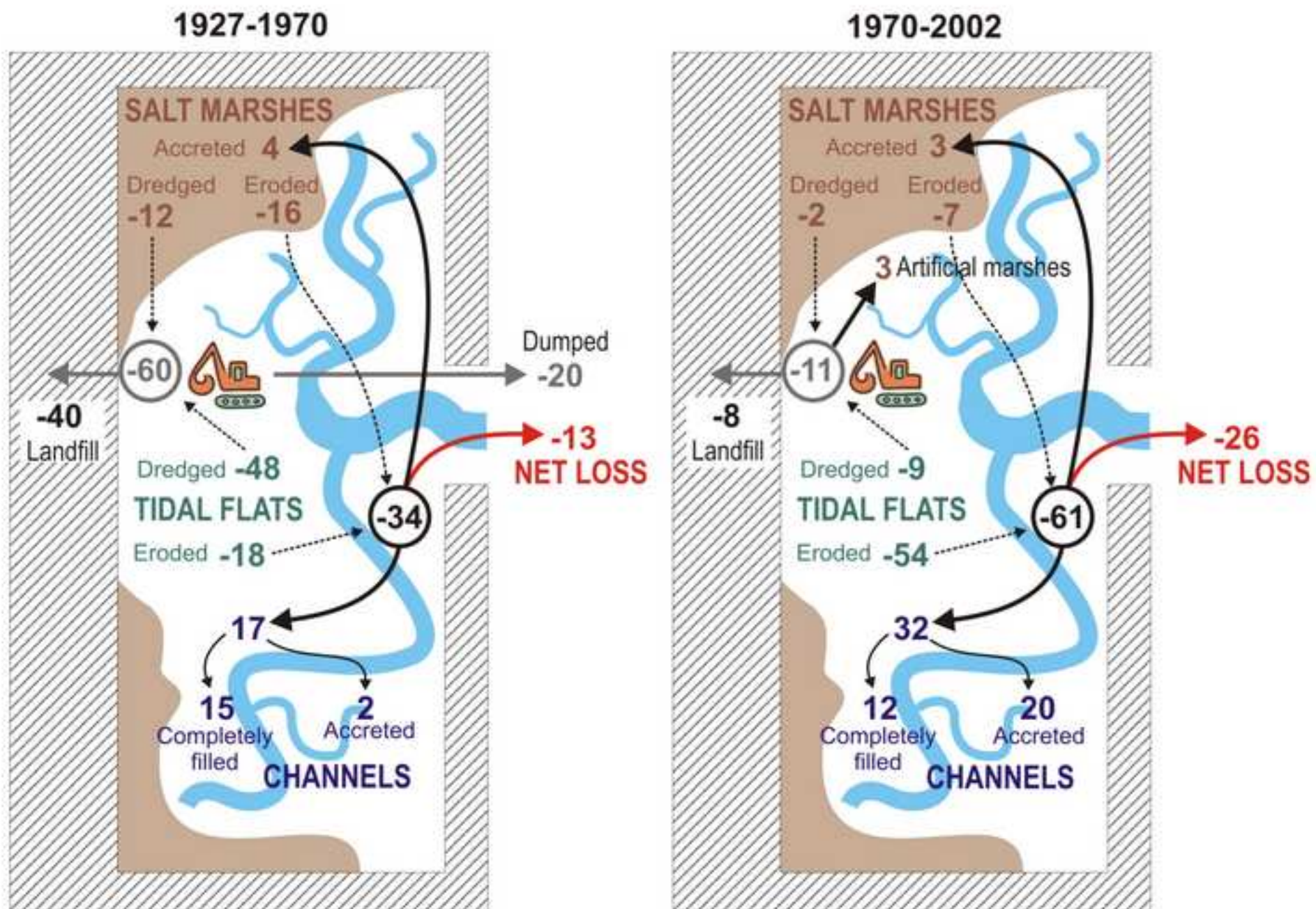


Fig. 7

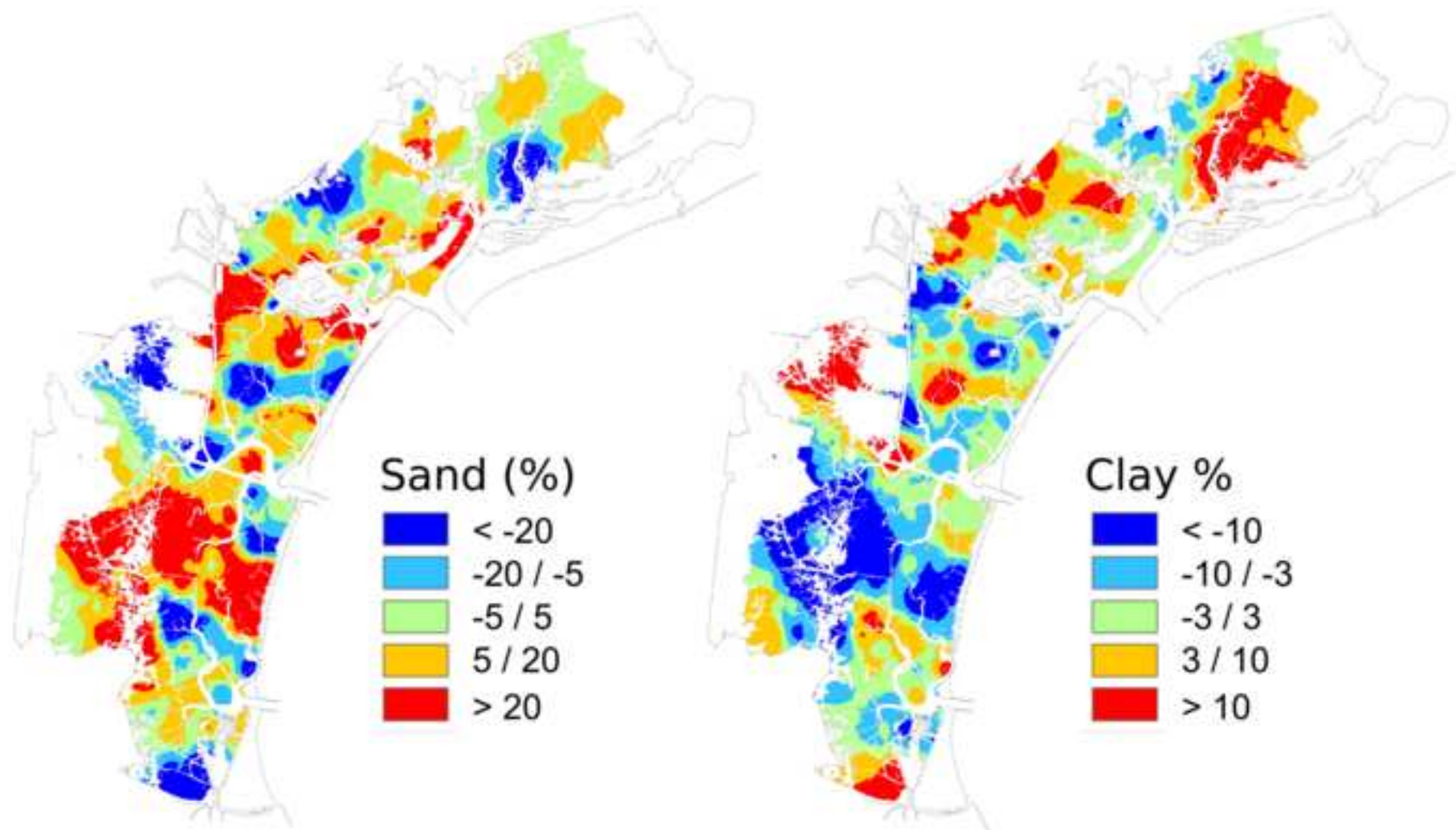




Fig. 8

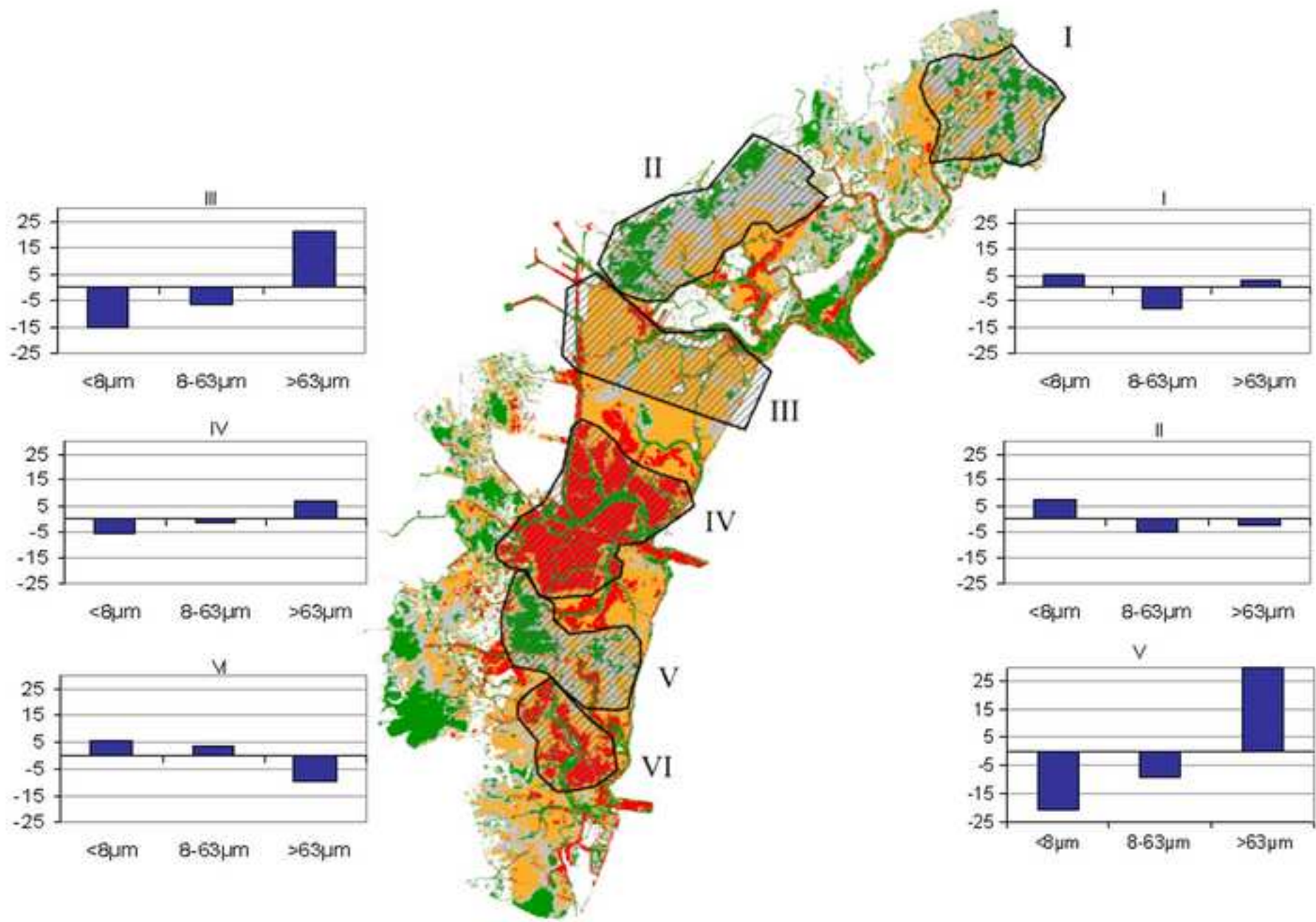
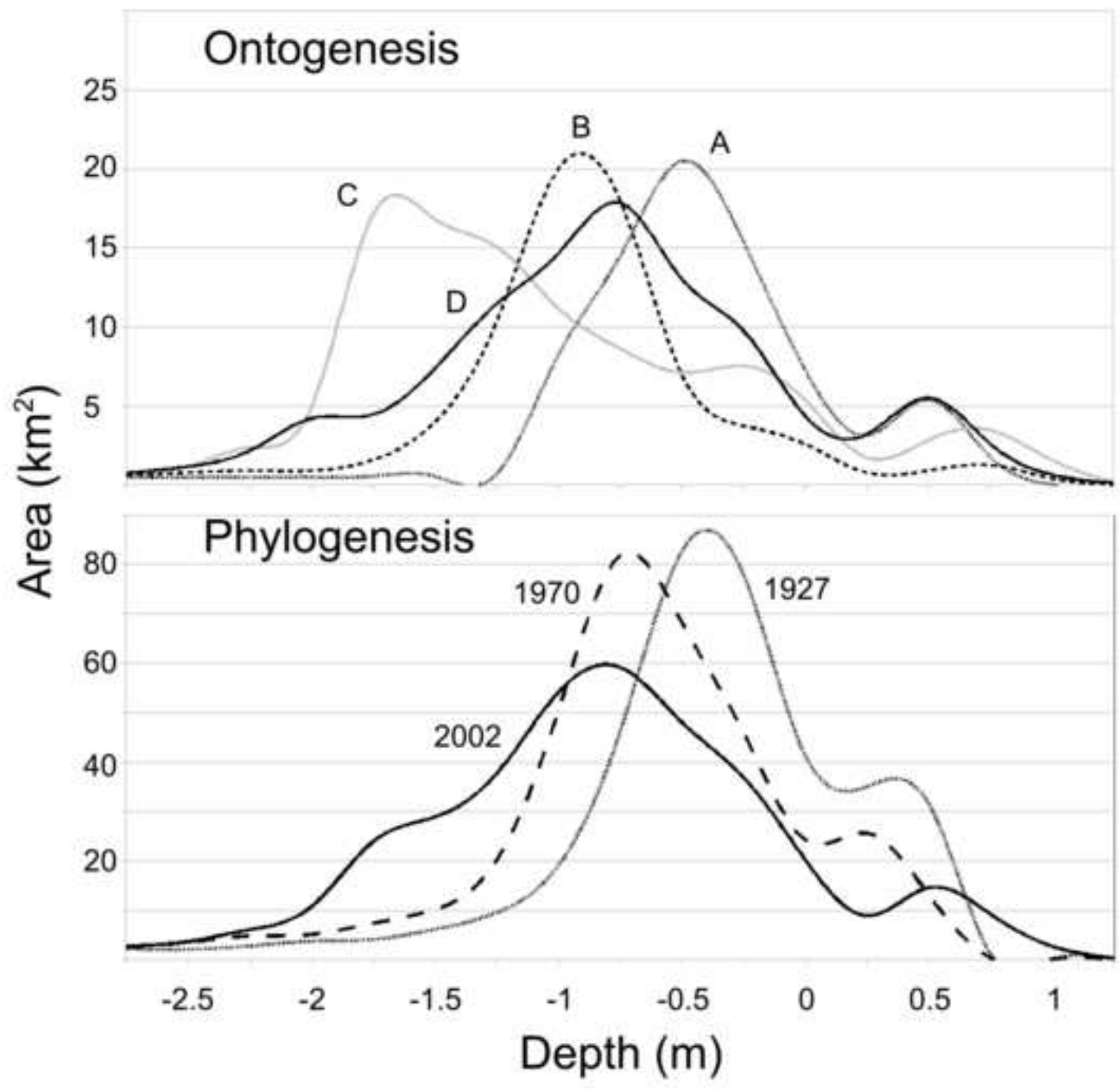


Fig. 9



Tab. 1

FIRST PERIOD	EVENT	NOTES
1910-1934	new harbour walls at Chioggia inlet	modification of lagoon-sea exchanges
1928	fish farming areas separated from rest of LV	reduction of lagoon surface area (85km <sup>2</sup> ) / reduction of water residence time
1917-1935	land reclamation for 1 <sup>st</sup> Industrial Zone (IZ)	saltmarsh destruction, (5 km <sup>2</sup> , West of City of Venice)
1931-34	construction of trans-lagoon bridge ( <i>Ponte della Libertà</i> )	modification of tidal current pattern
1950-53	land reclamation for 2 <sup>nd</sup> Industrial Zone	saltmarsh destruction (5 km <sup>2</sup> , South of 1 <sup>st</sup> IZ)
1957	land reclamation for housing (S. <i>Giuliano</i> , east of Mestre)	saltmarsh destruction (2 km <sup>2</sup> , North of trans-lagoon bridge)
1958-1962	airport construction	saltmarsh destruction (~3km <sup>2</sup> ), excavation of new artificial canal from airport to Venice city
1962	land reclamation for 3 <sup>rd</sup> Industrial Zone (never completed), now called " <i>Casse di Colmata</i> ", i.e. unfinished reclamation islands	saltmarsh destruction (12km <sup>2</sup> , South of 2 <sup>nd</sup> IZ)
1966-1969	excavation of Malamocco-Marghera navigation channel ("Oil Canal")	30-50 Mm <sup>3</sup> of sediments disposed of in landfill areas outside the lagoon / modification of hydrodynamic conditions
1930-1970	major development of Industrial activities	from 1932 to 1972, ~12 cm of subsidence were due to water extraction for industrial use
<b>SECOND PERIOD</b>		
from '70s on	dredging of Porto Marghera channels	disposal of 5-15 Mm <sup>3</sup> of polluted sediments, in part outside lagoon
1970-1980	increased discharges from Industrial area (nutrients, metals, POPs)	part of sediments becoming more and more polluted, and thus not suitable for re-use inside lagoon
80s	eutrophication and subsequent macro algae blooms and anoxia	Lagoon bed covered by high quantity of biomass (up to 10-25 kg m <sup>-2</sup> )
middle '80s	introduction of Manila clam for aquaculture purposes	concession of lagoon areas (~14km <sup>2</sup> ) for clam cultivation and harvesting (seagrass loss, sediment re-suspension and alteration of physical properties)
from 1990	dredging for renovation of Port area	3-5Mm <sup>3</sup> of sediments, partly disposed of outside lagoon
1992	construction of artificial " <i>Tresse</i> " island to dispose of polluted industrial waste	saltmarsh destruction (~2 km <sup>2</sup> )
90s	"invasion" of LV by <i>Manila clam</i>	disturbance of sediments through mechanical clam harvesting
1990-2000	construction of artificial saltmarshes (~4 km <sup>2</sup> )	Re-use of non polluted sediments dredged from channels (3-4 Mm <sup>3</sup> )

Tab. 2a –

Depth interval (m)	Area (km <sup>2</sup> )			Area changes (km <sup>2</sup> )		
	1927	1970	2002	1970-1927	2002-1970	2002-1927
<25	0	0	0	0.0	0.0	0.0
-25/-20	0	0	0	0.0	0.1	0.1
-20/-15	1	2	2	1.1	0.0	1.0
-15/-10	5	7	6	2.4	-0.7	1.7
-10/-5	20	20	17	-0.3	-2.6	-2.9
-5/-2	29	32	39	3.4	6.5	9.9
-2/-1.5	10	18	54	7.3	35.7	43.0
-1.5/-1.25	10	21	38	11.5	16.9	28.4
-1.25/-1	20	52	55	32.2	3.4	35.6
-1/-0.75	48	82	59	34.5	-23.2	11.2
-0.75/-0.5	84	67	49	-16.6	-18.5	-35.0
-0.5/-0.25	77	45	37	-31.7	-7.5	-39.2
-0.25/0	39	23	19	-15.9	-3.8	-19.8
>0	68	39	32	-28.8	-6.5	-35.3
<b>Total</b>	<b>409</b>	<b>409</b>	<b>408</b>	<b>-0.9</b>	<b>-0.2</b>	<b>-1.1</b>

Tab. 2b

Depth interval (m)	1927 Area (km <sup>2</sup> )				1970 Area (km <sup>2</sup> )				2002 Area (km <sup>2</sup> )			
	A	B	C	D	A	B	C	D	A	B	C	D
<25	0	0	0	0	0	0	0	0	0	0	0	0
-25/-20	0	0	0	0	0	0	0	0	0	0	0	0
-20/-15	0	0	0	0	0	0	1	0	0	0	1	0
-15/-10	0	3	2	0	0	4	2	0	0	4	2	0
-10/-5	4	6	6	3	4	6	6	4	4	5	5	4
-5/-2	5	7	8	8	5	6	9	11	5	7	14	12
-2/-1.5	1	1	4	4	1	3	8	6	1	6	34	12
-1.5/-1.25	0	2	4	3	1	5	10	6	1	11	15	12
-1.25/-1	1	4	7	8	5	14	17	16	9	20	11	15
-1/-0.75	6	11	14	16	13	25	26	18	15	18	9	18
-0.75/-0.5	15	24	25	20	20	11	18	18	21	7	8	13
-0.5/-0.25	19	13	24	21	16	8	7	14	15	4	8	10
-0.25/0	16	8	8	8	9	2	5	7	7	3	5	4
>0	21	8	19	19	12	3	12	11	10	3	8	10
<b>Total</b>	<b>88</b>	<b>88</b>	<b>121</b>	<b>111</b>	<b>88</b>	<b>87</b>	<b>121</b>	<b>111</b>	<b>88</b>	<b>87</b>	<b>121</b>	<b>111</b>

Tab. 2c

Depth interval (m)	Area changes 1970-1927 (km <sup>2</sup> )				Area changes 2002-1970 (km <sup>2</sup> )				Area changes 2002-1927 (km <sup>2</sup> )			
	A	B	C	D	A	B	C	D	A	B	C	D
<25	0.0	0.0	0.0	0.0	0.0	0.0	0.0	0.0	0.0	0.0	0.0	0.0
-25/-20	0.0	0.0	0.0	0.0	0.0	0.0	0.1	0.0	0.0	0.0	0.1	0.0
-20/-15	0.0	0.1	1.0	0.0	0.0	0.0	0.0	0.0	0.0	0.1	0.9	0.0
-15/-10	0.2	1.2	0.9	0.1	0.0	-0.2	-0.7	0.1	0.2	1.0	0.3	0.2
-10/-5	-0.2	0.1	-0.7	0.4	-0.5	-0.5	-1.1	-0.4	-0.7	-0.5	-1.7	0.1
-5/-2	0.5	-1.2	0.9	3.1	-0.3	0.6	5.2	1.1	0.2	-0.6	6.1	4.2
-2/-1.5	0.5	1.5	3.6	1.8	-0.1	2.8	26.7	6.2	0.4	4.4	30.3	8.0
-1.5/-1.25	0.5	2.6	5.4	3.0	-0.1	5.9	5.4	5.6	0.4	8.5	10.8	8.6
-1.25/-1	4.2	10.3	9.7	7.9	3.6	6.5	-5.5	-1.2	7.8	16.8	4.2	6.7
-1/-0.75	6.5	14.1	12.2	1.7	2.2	-7.8	-17.7	0.0	8.7	6.3	-5.4	1.6
-0.75/-0.5	5.8	-12.9	-6.6	-2.8	0.2	-4.3	-10.2	-4.2	5.9	-17.2	-16.8	-7.0
-0.5/-0.25	-2.8	-5.5	-16.5	-6.8	-0.8	-4.1	0.9	-3.6	-3.6	-9.6	-15.6	-10.4
-0.25/0	-6.4	-5.5	-3.0	-1.0	-2.1	0.5	0.5	-2.6	-8.6	-5.0	-2.5	-3.6
>0	-8.9	-5.0	-7.2	-7.6	-2.0	0.2	-3.7	-1.0	-10.9	-4.7	-10.9	-8.6





Tab. 3

Entire Lagoon of Venice	1927-70			1970-2002		
	Km <sup>2</sup>	Depth variation (m)	Mm <sup>3</sup>	km <sup>2</sup>	Depth variation (m)	Mm <sup>3</sup>
<b>sedimentation inside lagoon</b>						
a) within channels	44	0.05	2	50	0.40	20
B completely filled channels	7	2.08	15	14	0.87	12
c) extension of saltmarshes	4	1.08	4	4	0.62	3
<b>dredged sediments</b>	22	-2.78	-60	9	-1.22	-11
<b>sediment eroded</b>						
a) tidal and subtidal flats	269	-0.07	-18	287	-0.19	-54
b) saltmarshes	26	-0.63	-16	10	-0.67	-7
<b>artificial saltmarshes</b>				4	0.91	3
<b>disposed of outside lagoon</b>			60			8
<b>lost through inlets</b>			<b>-13</b>			<b>-26</b>

Tab. 4

	Sub-basin	Budget (Mm <sup>3</sup> )	Disposal outside (Mm <sup>3</sup> )	Lost to sea (Mm <sup>3</sup> )	Rate of loss in m <sup>3</sup> ·10 <sup>3</sup> ·yr <sup>-1</sup>	Rate of loss in tons <sup>^</sup> 10 <sup>3</sup> yr <sup>-1</sup>	River input m <sup>3</sup> ·10 <sup>3</sup> ·yr <sup>-1</sup>
1927-1970	A - Treporti	-7,0	6	-1,0	-23	-31	
	B - Lido	-20,0	17	-3,0	-70	-92	
	C - Malamocco	-34,2	30	-4,2	-98	-130	
	D - Chioggia	-12,0	7	-5,0	-116	-153	
	Total Lagoon	-73,2	60	-13,2	-307	-406	
1970-2002	A - Treporti	1,7	0	1,7	54	71	14
	B - Lido	-4,1	2	-2,1	-65	-85	8
	C - Malamocco	-24,1	3	-21,1	-659	-870	4
	D - Chioggia	-8,0	3	-5,0	-156	-206	7
	Total Lagoon	-34,4	8	-26,4	-826	-1090	33

(<sup>^</sup>) Volume estimates assume uniform density of 2,650 kgm<sup>-3</sup> and 50% porosity

**Tab. 5**

Sub-basins	Sand 1970 (%)	Sand 2000 (%)	Silt 1970 (%)	Silt 2000 (%)	Clay 1970 (%)	Clay 2000 (%)
A	8 (0-49)	11 (2-43)	68 (44-84)	61 (45-72)	24 (8-51)	29 (11-43)
B	19 (3-64)	31 (1-91)	60 (25-86)	48 (6-70)	21 (8-35)	22 (3-46)
C	40 (3-96)	42 (6-83)	41 (2-65)	41 (12-73)	19 (1-45)	18 (3-40)
D	39 (0-97)	48 (1-98)	42 (2-73)	36 (1-62)	20 (1-47)	16 (0-45)

**Table 6**

Sub-zone	Area ID	Erosion/ Deposition regime	km <sup>2</sup>	Mean depth variation (m)	Sedimentation/erosion rate (cm yr <sup>-1</sup> )	Volume (Mm <sup>3</sup> )
I	A	SD	19	0.12	0.4	2
II	A/B	SD	28	0.08	0.3	2
III	B	ME	24	-0.23	-0.7	-5
IV	C	SE	27	-0.81	-2.5	-22
V	C/D	SD	16	0.11	0.4	2
VI	D	SE	8	-0.60	-1.9	-5

SD: stability + deposition; ME: moderate erosion; SE: strong erosion