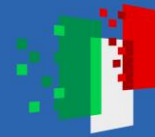




Finanziato
dall'Unione europea
NextGenerationEU



Ministero
dell'Università
e della Ricerca



Italiadomani
PIANO NAZIONALE
DI RIPRESA E RESILIENZA



Consiglio Nazionale
delle Ricerche

SHARE – Survey on Health, Ageing and Retirement in Europe

Training FOSSR

*“Data lifecycle and
architectures in the social
sciences”*

Gabriella D'Ambrosio

gabriella.dambrosio@irpps.cnr.it

October 5th, 2023



FOSSR

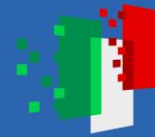
Fostering Open Science in Social Science Research
Innovative tools and services to investigate economic and societal change



Finanziato
dall'Unione europea
NextGenerationEU



Ministero
dell'Università
e della Ricerca



Italiadomani
PIANO NAZIONALE
DI RIPRESA E RESILIENZA



Consiglio Nazionale
delle Ricerche

Aims and scope



SHARE, the Survey of Health, Ageing and Retirement in Europe, is a research infrastructure for studying the effects of health, social, economic and environmental policies over the life-course of European citizens and beyond. Since fielding the baseline of SHARE in 2004/05, panel waves are collected on a bi-yearly basis.

From 2004 until today, 530.000 in-depth interviews with 140.000 people aged 50 or older from 28 European countries and Israel have been conducted. Thus, SHARE is the largest pan-European social science panel study providing internationally comparable longitudinal micro data which allows insights in the fields of public health and socio-economic living conditions of European individuals, both for scientists and policy makers.

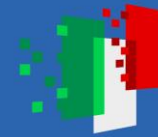
SHARE has global impact since it not only covers all EU member countries in a strictly harmonized way but additionally is embedded in a network of sister studies all over the world, from the Americas to Eastern Asia.



Finanziato
dall'Unione europea
NextGenerationEU



Ministero
dell'Università
e della Ricerca



Italiadomani
PIANO NAZIONALE
DI RIPRESA E RESILIENZA



Consiglio Nazionale
delle Ricerche

Central Coordination and Country Teams



SHARE is centrally led by the Managing Director of SHARE-ERIC, Professor Dr. Axel Börsch-Supan, at the Munich Center for the Economics of Aging, a division of the Max Planck Institute for Social Law and Social Policy.

About 40 people work in the SHARE central office in Munich, taking care of the Database Management, Questionnaire Development, Survey Methodology, Operations, and the various research projects of SHARE. They are complemented by the Financial Affairs, European Relations and International Management, and Public Relations units, which are responsible for the administrative aspects of the survey, such as funding, governance, central procurement for the survey agencies, data protection and public relations.

In each participating country, a country team manages the national or regional data collection. Scientists from local research institutions lead a team of one to five members and ensure the same methodological standards in all SHARE countries. To conduct the survey, carefully selected survey agencies assist these teams with their professional knowhow and their highly trained interviewers.



Finanziato
dall'Unione europea
NextGenerationEU



Ministero
dell'Università
e della Ricerca



Italiadomani
PIANO NAZIONALE
DI RIPRESA E RESILIENZA



Consiglio Nazionale
delle Ricerche

Sampling design



The SHARE target population consists of all persons aged 50 years and over at the time of sampling who have their regular domicile in the respective SHARE country.

A person is excluded if she or he is incarcerated, hospitalized or out of the country during the entire survey period, unable to speak the country's language(s) or has moved to an unknown address. All SHARE respondents who were interviewed in any previous wave are part of the longitudinal sample. If they have a new partner living in the household, the new partner is eligible for an interview as well, regardless of age.

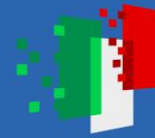
Age eligible respondents who participated are traced and re-interviewed if they move within the country and end-of-life interviews are conducted if they decease.



Finanziato
dall'Unione europea
NextGenerationEU



Ministero
dell'Università
e della Ricerca



Italiadomani
PIANO NAZIONALE
DI RIPRESA E RESILIENZA



Consiglio Nazionale
delle Ricerche

Data collection

SHARE data collection is based on computer-assisted personal interviewing (CAPI).

The interviewers conduct face-to-face interviews using a laptop computer on which the CAPI instrument is installed. Personal interviews are necessary for SHARE because they make the execution of physical tests (grip strength, walking speed, peak-flow, chair stand) and the collection of biomarkers possible.

Exceptions are the drop-off and the vignettes questionnaires which are conducted via paper & pencil as well as the end-of-life interviews that can be conducted via CATI (computer-assisted telephone interview), too.





SHARE Questionnaire



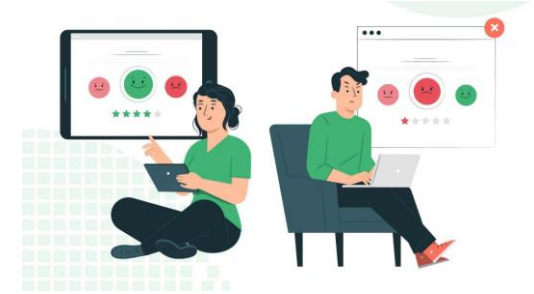
The SHARE interview consists of various thematic blocks or modules. Prior to the main interview, the cover screen is completed by one household member on behalf of the household.

The main questionnaire is based on various different CAPI modules. To pick up contemporary issues and due to alterations and time constraints not every module was part of every wave.

- Demographics and Networks
- Social Networks
- Children
- Physical Health
- Behavioral Risks
- Household and Income
- Expectations
- Cognitive Function
- Mental Health
- Health Care
- Employment and Pensions
- Computer Use
- Social Support
- Financial Transfers
- Housing
- Consumption
- Assets
- Activities
- Childhood
- Interview Observations



Interviewer trainings



In order to prepare all participating countries for the fieldwork of survey, the SHARE Central team in Munich conducted the so-called Train-the-Trainer (TTT) sessions. The TTT training program conveys all technical, logistical and managerial aspects of successful fieldwork and proved itself as a valuable tool in preceding waves.

The participants of the TTT are representatives of the involved survey agencies who are instructed to then pass on the obtained information to their interviewers during National Training Sessions (NTS) in the respective countries.

General interview training shall cover the following topics:

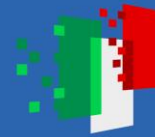
- ethical guidelines for interviewing human subjects;
- rules for asking questions and recording answers in an unbiased manner;
- proper procedures for locating and contacting sample persons;
- conducting conversion attempts for reluctant sample persons.



Finanziato
dall'Unione europea
NextGenerationEU



Ministero
dell'Università
e della Ricerca

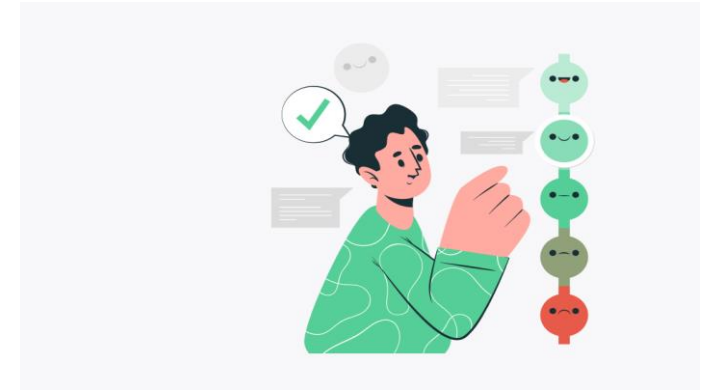


Italiadomani
PIANO NAZIONALE
DI RIPRESA E RESILIENZA



Consiglio Nazionale
delle Ricerche

Fieldwork monitoring



A monitoring process was installed to control the entire data collection process in the field with the option to intervene if necessary.

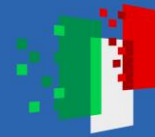
During fieldwork, SHARE Coordination will send out Fieldwork Monitoring Reports every other week to inform all survey agencies and Country Teams about the current state of fieldwork and suggest solutions to problems with fieldwork progress or data quality.



Finanziato
dall'Unione europea
NextGenerationEU



Ministero
dell'Università
e della Ricerca



Italiadomani
PIANO NAZIONALE
DI RIPRESA E RESILIENZA



Consiglio Nazionale
delle Ricerche

SHARE Wave 10 Survey in Italy



SHARE has previously collected nine waves of data, where most of the questions provided information about the circumstances of respondents' lives at the time of the interview or in their childhood. Due to the outbreak of the Covid-19 in March 2020 all face-to-face interviews needed to be stopped and instead a telephone survey was conducted. These necessary measures also had consequences on SHARE's ninth wave, where a second telephone survey was conducted.

SHARE's tenth wave shall tie again to earlier waves. It collects health variables, psychological variables, economic variables, social support variables.

As in previous waves the questionnaire includes mainly closed questions as well as physical and mental health tests. The data will be available free of charge to the scientific research community.

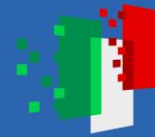
The refreshment sample for wave ten in Italy (N = 2.400 interviews) is paid for by PNRR funding granted to the CNR, as part of the FOSSR Project.



Finanziato
dall'Unione europea
NextGenerationEU



Ministero
dell'Università
e della Ricerca



Italiadomani
PIANO NAZIONALE
DI RIPRESA E RESILIENZA



Consiglio Nazionale
delle Ricerche

Data processing

Raw accelerometer data are processed at SHARE Central to provide users with aggregated measures for activity on different levels in generated modules.

The data are processed with GGIR, an open-source package for the statistical computing software R. GGIR includes several steps of raw data processing to maximize the quality and comparability of generated measures.



Data access

SHARE data is distributed by Centerdata which is located at the Tilburg University campus in the Netherlands.

SHARE data is provided in Stata and SPSS format. easySHARE is additionally available for the software R. For the use with other statistical software, the data has to be transferred by users themselves.



Finanziato
dall'Unione europea
NextGenerationEU



Ministero
dell'Università
e della Ricerca

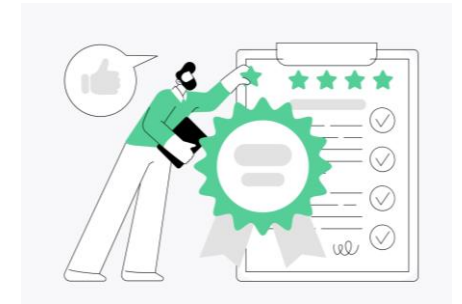


Italiadomani
PIANO NAZIONALE
DI RIPRESA E RESILIENZA



Consiglio Nazionale
delle Ricerche

Property Rights



SHARE-ERIC is the owner of the survey and all of its data, including add-ons, certified by SHARE, meta and paradata and all address and link files (coded data, keys, etc.) and of all intellectual property rights emanating from setting up and conducting the survey.

All copyrights on data, software and documents (including their translations) made available to Survey Agency belong to SHARE-ERIC.

As far as the wave 10 refreshment sample is concerned CNR and SHARE-ERIC are joint owners.



Finanziato
dall'Unione europea
NextGenerationEU



Ministero
dell'Università
e della Ricerca



Italiadomani
PIANO NAZIONALE
DI RIPRESA E RESILIENZA



Consiglio Nazionale
delle Ricerche

For any further information, visit the official website:

<https://share-eric.eu/>

The banner features a stylized map of Europe in the background, overlaid with several colorful, tilted rectangular shapes in shades of blue, orange, and pink. Three photographs of elderly people are integrated into the design: a woman on the left, a man with a white beard in the center, and a couple on the right. At the bottom left, the text "How we age in Europe." is written in a white, cursive font on an orange background. At the bottom right, the SHARE logo is displayed, consisting of a circular arrangement of small orange dots followed by the text "SHARE SURVEY OF HEALTH, AGEING AND RETIREMENT IN EUROPE".