

Small-scale Sustainable Agriculture as a Platform for Experiential Learning

Devin R. Berg

University of Wisconsin-Stout

The background features a dark blue field with lighter blue, wavy, horizontal lines. On the right side, the word "stout" is written vertically in a large, white, serif font, with the letters overlapping the wavy lines.



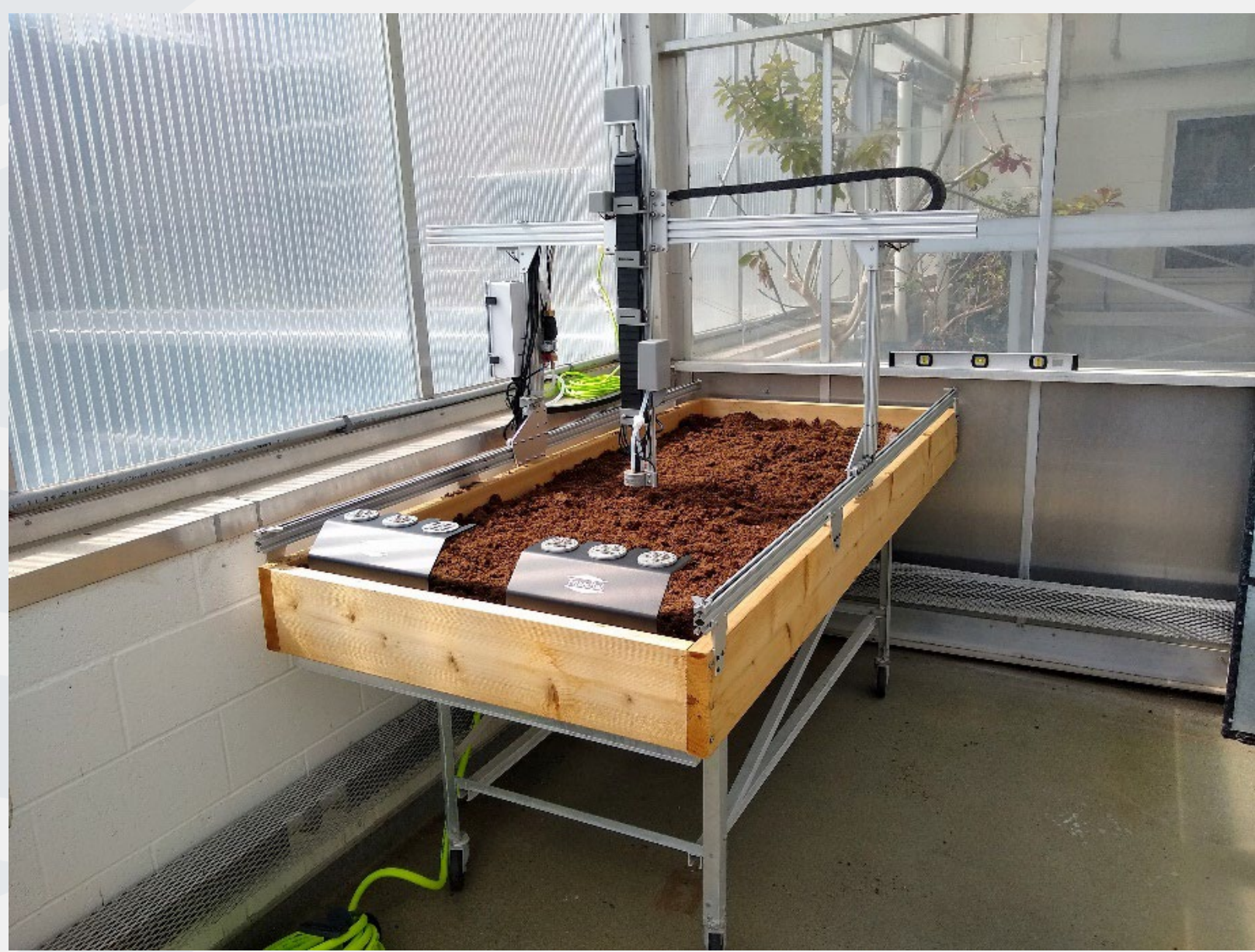
MENONMIN



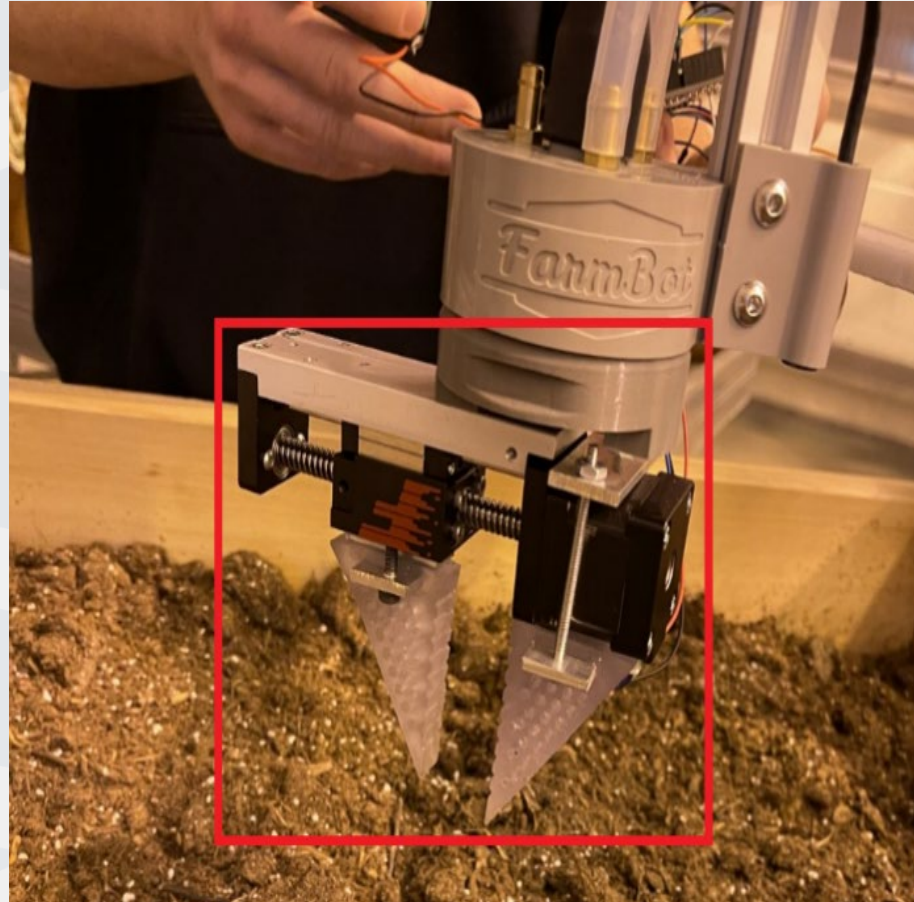
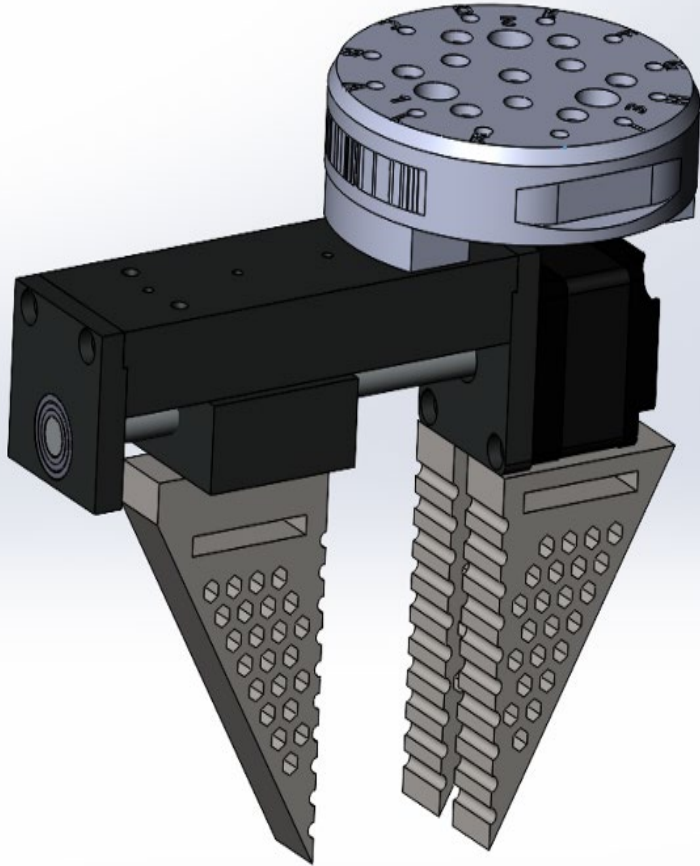
University of
Wisconsin-Stout

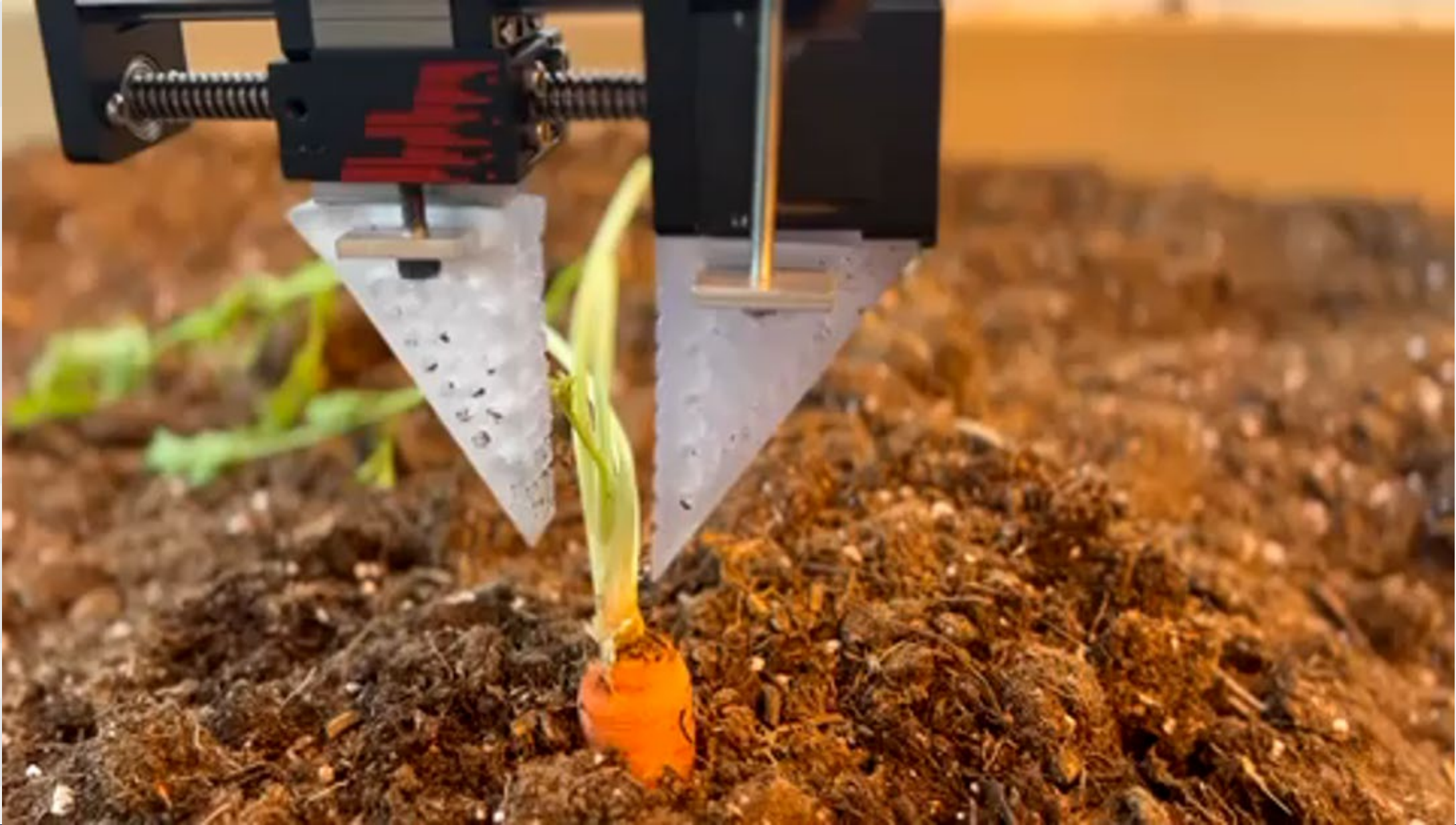
FarmBot

- Open-source hardware and software
- Functional learning platform
- Universal Tool Mount



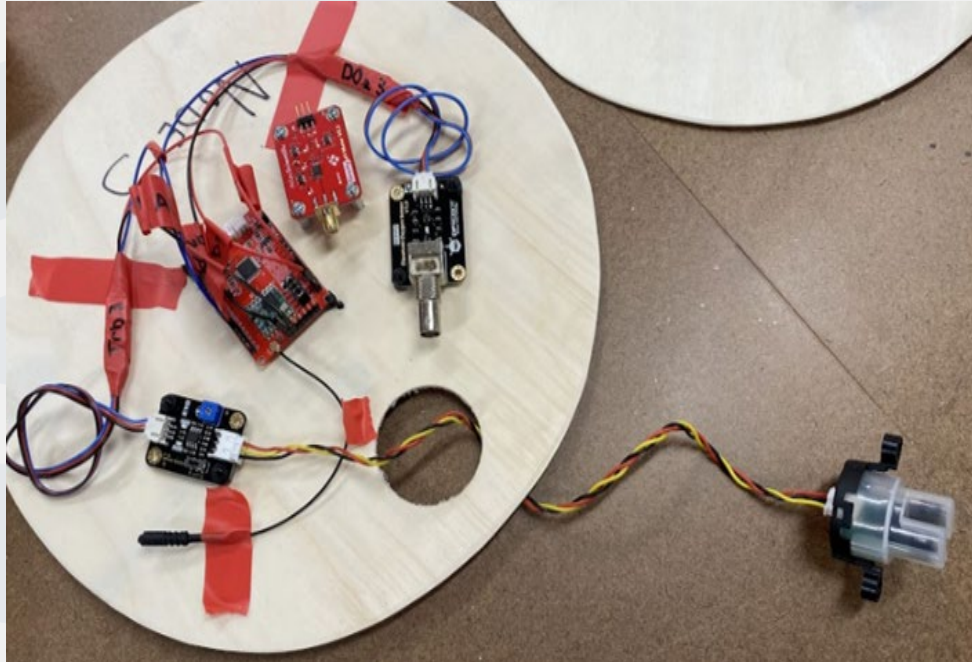
FarmBot End of Arm Tooling





University of
Wisconsin-Stout

Lake Health Monitoring







SUMMER SESSION STUNTS

Bioremediation



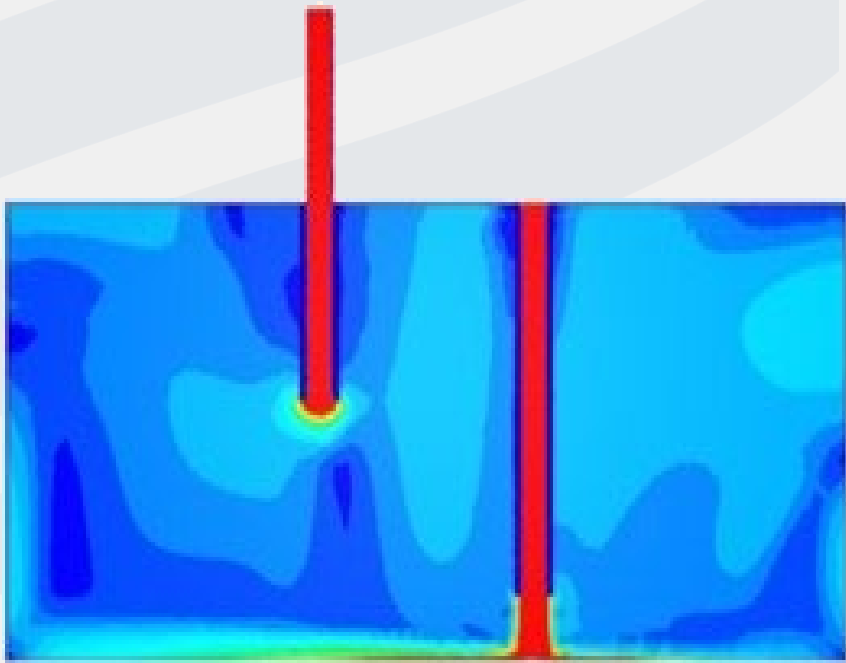
Jflo23, CC BY-SA 3.0
via Wikimedia Commons



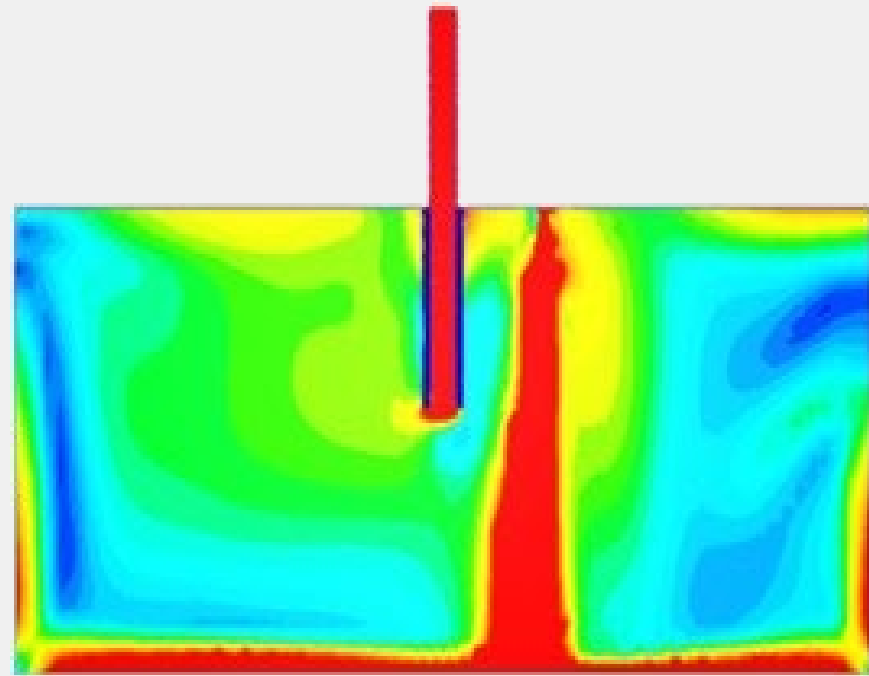
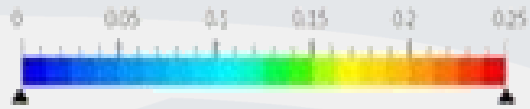
University of
Wisconsin-Stout

A senior design version of a chinampa

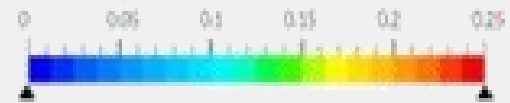




Velocity Magnitude = m/s



Velocity Magnitude = m/s





University of
Wisconsin-Stout

Thank You!

I would like to thank the many students who contributed their time and efforts to the projects described here. I would also like to thank the farmers who invited me to visit their farms and who shared their experiences with me. A listing of these collaborators can be found at <https://osf.io/7q3ma>. Thank you to the Stout University Foundation and its donors who provided financial support for some of the work described here. Portions of this work were also supported by the Freshwater Collaborative of Wisconsin and by the National Science Foundation under Grant No. SMA-1950289. Any opinions, findings, and conclusions or recommendations expressed in this material are those of the authors and do not necessarily reflect the views of the National Science Foundation.

