



**OPEN SCIENCE FAIR 2023
MADRID SEPTEMBER 25**



Transforming research assessment for next generations



Manuel Franco MD, PhD

Associate Profesor

School of Medicine, University of Alcalá, Spain

Adjunct Associate Professor

Department of Epidemiology

Johns Hopkins Bloomberg School of Public Health, Baltimore



- Epidemiology and Public Health research career, both in the US and Spain, on Urban Health
- Social Epidemiology as an interdisciplinary approach collaborating with Social Scientists
- Madrid, Berlin, Baltimore, Madrid, Barcelona..



OPEN SCIENCE FAIR 2023 MADRID SEPTEMBER 25



- Science translation into actions and policies for higher social impact
- Science communication
- Citizen science

How do these concepts go into my CV?

How do we fund this type of research?

**Transforming research assessment
for next generations**

ERC Starting Grants

FUNDING	1.5 million € for 5 years
OBJECTIVE	To encourage independent careers of excellent investigators providing enough support in the critical moment (starting to develop their own team).
ELEGIBILITY	PI must have a PhD degree in the last 2 to 7 years. <u>Available to non-EU researchers.</u>
REQUISITES	At least one relevant publication without his/her thesis advisor At least 50% effort
PROFILE	High potential, project with potential social Impact in Europe.



HEART HEALTHY HOODS



Universidad
de Alcalá

Social and Physical Urban environments and Cardiovascular Health: The much needed population approach

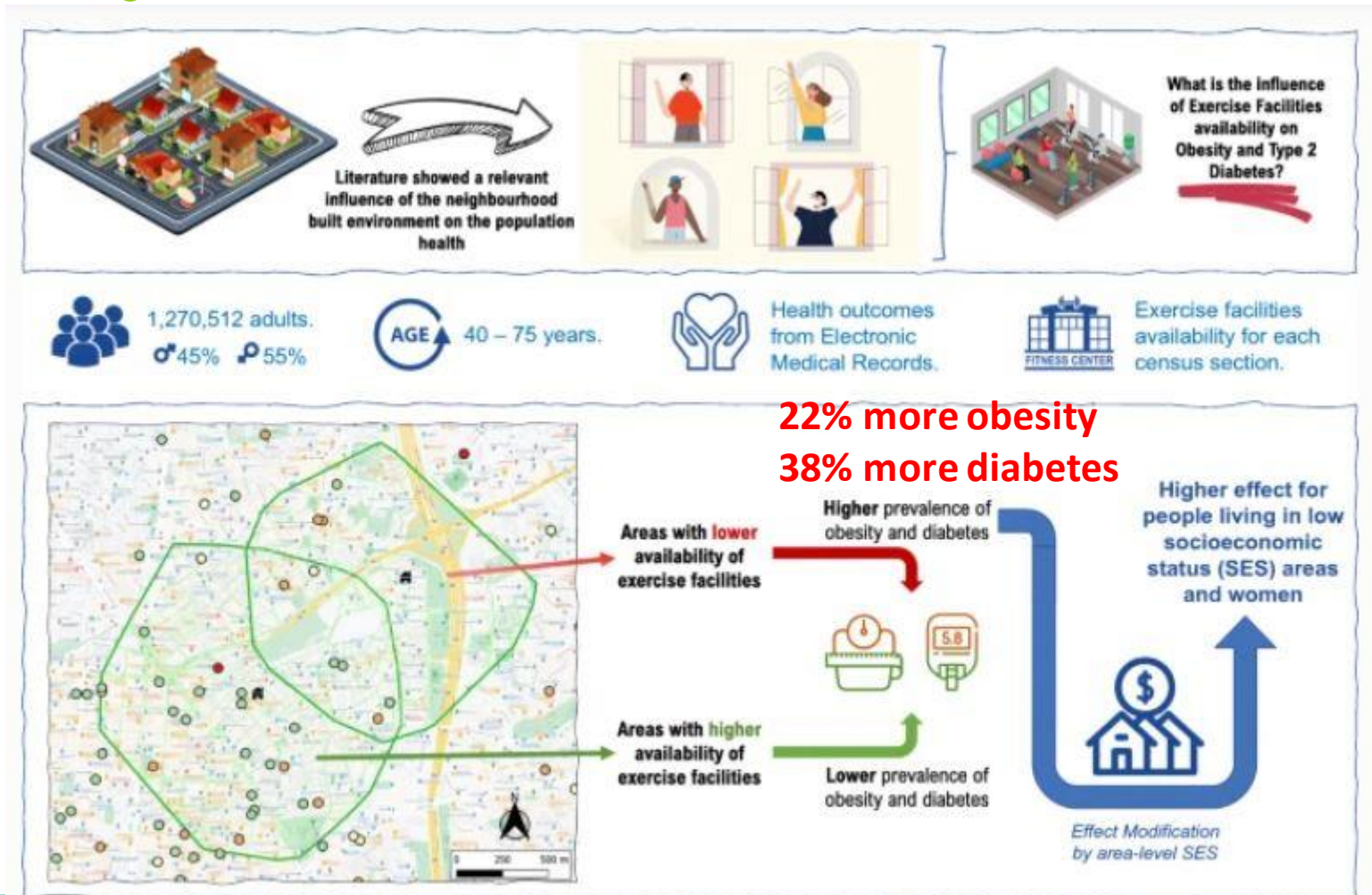


Manuel Franco MD, PhD

ERC Starting Grant 2014

Exercise facilities and the prevalence of obesity and type 2 diabetes in the city of Madrid

Luis Cereijo^{1,2,3}  • Pedro Gullón¹  • Isabel Del Cura^{4,5,6} • David Valadés²  • Usama Bilal^{7,8}  • Hannah Badland³  • Manuel Franco^{1,9} 





PUBLIC HEALTH

La obesidad y la diabetes en Madrid van por barrios: los pobres y con pocos centros deportivos las sufren más

Tras analizar a más de un millón de adultos residentes en la capital, investigadores de la Universidad de Alcalá muestran que las áreas con menos instalaciones deportivas presentan un 22 % más de obesidad y un 38 % más diabetes. El efecto es mayor en zonas de bajo nivel socioeconómico, y aún más en mujeres. Instan a los ayuntamientos a estimular el deporte inclusivo para reducir las desigualdades en salud.



Verónica Fuentes 24/11/2021 08:40 CEST

<https://www.agenciasinc.es/en/view/content/297378/full/1/130522>



Article

Socioeconomic Inequalities in the Retail Food Environment around Schools in a Southern European Context

Julia Díez ^{1,*} , Alba Cebrecos ¹, Alba Rapela ¹, Luisa N. Borrell ^{2,3} , Usama Bilal ^{1,4,5} 
and Manuel Franco ^{1,2,6}

¹ Public Health and Epidemiology Research Group, School of Medicine, Universidad de Alcalá, Alcalá de Henares, 28801 Madrid, Spain

² Department of Surgery, Medical and Social Science, School of Medicine, Universidad de Alcalá, 28801 Madrid, Spain

³ Department of Epidemiology and Biostatistics, Graduate School of Public Health and Health Policy, The City University of New York, New York, NY 10027, USA

⁴ Urban Health Collaborative, Drexel Dornsife School of Public Health, Philadelphia, PA 19104, USA

⁵ Department of Epidemiology and Biostatistics, Drexel Dornsife School of Public Health, Philadelphia, PA 19104, USA

⁶ Department of Epidemiology, Johns Hopkins Bloomberg School of Public Health, Baltimore, MD 21205, USA

* Correspondence: julia.diez@uah.es; Tel.: +34-918-852-522



La oferta de comida basura es mucho mayor junto a los colegios de barrios desfavorecidos

Un estudio pionero en el sur de Europa muestra que el 95% los escolares madrileños están expuestos a malos alimentos en la misma puerta del centro educativo



JAVIER SALAS

7 JUL 2019 - 00:08 CEST



Escolares en la puerta de un colegio madrileño. LUIS SEVILLANO

El número de tiendas de este tipo alrededor de las escuelas en barrios desfavorecidos es hasta un 62% mayor que las de los barrios medios



PHOTOVOICE VILLAVERDE PROJECT



A participatory action research project to improve the urban food environment in Madrid



Manuel Franco MD, PhD

Professor

School of Medicine, University of Alcalá, Spain

Department of Epidemiology

Johns Hopkins Bloomberg School of Public Health



● Ángel Frías



● Amador Silebo



● Daniel Rafael Mato



● José Luis Carrero



● Christine Funrock



● Esther Ortiz



● Juani Moreno



● Mercedes Bellot



● Isabel Masa



● Mª Soledad Olivo



● Mercedes Rivera



● Zakia El Khamlichi



● Beatriz Criado



● Juana Carulli



● Sagrario Gómez



● Encarnación Franco



● Rosa Arana



● Encarna Dopido



● Daniel Serrano



● Daniel Serrano



● Daniel Serrano



● Daniel Serrano



● Daniel Serrano



● Daniel Serrano



- **Diez J, et al. Health and Place,**
- Diez J, et al. Public Health Nutrition,
- **Budig K and Diez J, et al. BMC Public Health**
- Gullón P and Diez J, et al. IJERPH
- Franco M, et al. Gaceta Sanitaria
- Gravina L, et al. Appetite
- ... All the way to Stockholm 2022 Environmental Epi Group



Video Photovoice Villaverde



YouTube^{ES}

villaverde photovoice



Photovoice Villaverde



Social and Cardiovascular Epidemiol...

41 suscriptores



Suscrito

72



Compartir

Clip



9,3 K visualizaciones hace 7 años

Photovoice study of the food environment in Villaverde, Madrid: A participatory research project for Obesity Prevention.,

<https://youtu.be/VliFggKzVas>

<http://hhhproject.es>



HEART HEALTHY HOODS

www.hhhproject.eu



European Research Council

Established by the European Commission

Supporting top researchers
from anywhere in the world

A CITIZEN SCIENCE APPROACH FOR FOOD IN THE CITIES, THE HEART HEALTHY HOODS ERC PROJECT: EXHIBITION AT THE EUROPEAN PARLIAMENT

European Parliament will host from May 2nd through May 10th an exhibition on this project

The exhibition, which has the impulse of MEP Estefanía Torres, will be visible at the

Mezzanine YEHUDI MENUHIN, PHS building 1st Floor, European Parliament

Official public opening Thursday 4th at noon, registration at 11:30 am



Communicating photovoice results European Parliament





Manuel Franco Urban Health Science communication efforts



EL PAÍS

EL PERIÓDICO GLOBAL



MANUEL FRANCO

19 MAY 2022 - 05:20 CEST



MEDIO AMBIENTE CIENCIA SALUD TECNOLOGÍA

LA SALUD VA POR BARRIOS · NUTRIR CON CIENCIA · ENFÓRMATE · NOSOTRAS RESPONDEMOS · SALUD MENTAL · ÚLTIMAS NOTICIAS

SALUD PÚBLICA > TRIBUNA *i*

E *Salud urbana: el barrio determina tu bienestar o tus enfermedades*

Lo que sucede en las ciudades marca la esperanza de vida de la mayor parte de la población del planeta. Toda una disciplina emergente ofrece datos imprescindibles para diseñar políticas que los protejan



Ciclistas en una calle de Copenhague.
TY STANGE



OPEN SCIENCE FAIR 2023 MADRID SEPTEMBER 25



- Science translation into actions and policies for higher social impact
- Science communication
- Citizen science

How do these concepts go into my CV?

How do we fund this type of research?

**Transforming research assessment
for next generations**



Thank you very much!



Universidad
de Alcalá



Manuel Franco MD, PhD
@mfranco_uah