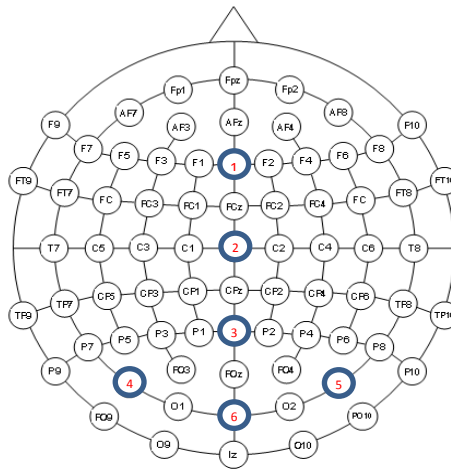


## Information about the Dataset

Recorded Channels:

1. Fz
2. Cz
3. Pz
4. PO7
5. PO8
6. Oz



EEG recordings for all subjects (P1-P17, PC) considered in the study "Composing only by thought: novel application of the P300 brain-computer interface".

Used biosignal amplifier system: Mobita by TMSi (fs= 250 Hz, no filtering except the integrated  $0.2 \cdot f_s$  anti-aliasing filter).

Data are in "General Data Format for biomedical signals" (GDF) format. They can be fully explored and analyzed using freely available software, like BIOSIG , EEGLab, Fieldtrip.

Used eventcodes:

| Code                                       | Description   |
|--|---|
| 1 -> 6                                     | Row of the P300 matrix flashed  |
| 7 -> 13                                    | Column of the P300 matrix flashed   |
| 768  | Start of Trial  |
| 16385 → 16420(6x6)                         | Element number of the matrix (top left = 1, bottom right = N) as result of the classification |
| 16385 → 16402(6x3)                         |   |
| (Subtract 16384 to get the element number) |   |