

# FAIR Principles

EUR Data Coffee Breaks

Liz Guzman-Ramirez, PhD

**Erasmus University Rotterdam**



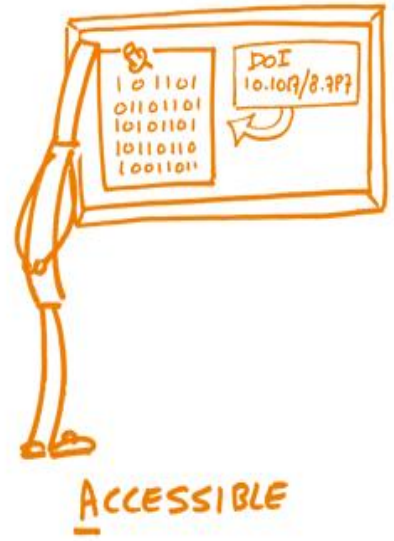
# The EUR Data Coffee Breaks

- Monthly meetings about Research Data Management by the EUR Data Stewards
- Short, focused, and informal
- 15-minute presentations
- Twice a month (hybrid + online)
- No recordings, slides available [here](#)



*Erasmus*

# FAIR DATA PRINCIPLES



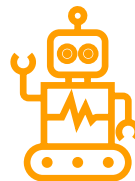
Picture: [FAIR principles](#) / Patrick Hochstenbach / [CC0 1.0](#)

*Erasmus*

# Be FAIR: Findable, Accessible, Interoperable, Re-usable

High level principles to make (meta)data:

- Findable
- Accessible
- Interoperable
- Re-usable



...for humans and machines

- FAIR paper: Wilkinson et al., 2016. <https://doi.org/10.1038/sdata.2016.18>
- More resources at <https://www.go-fair.org/>

A stylized, handwritten-style logo for Erasmus, consisting of a cursive script.

# Be FAIR: Findable

## What does it mean in practice?

- relevant data appears in search engines
- reliable hyperlinks

## Practical steps:

- **deposit data in a repository**
- claim persistent identifier (long-lasting link)
- provide metadata



# Be FAIR: Findable

## What does it mean in practice?

- relevant data appear in search engines
- reliable hyperlinks

## Practical steps:

- deposit data in a repository
- **claim persistent identifier (long-lasting link)**
- provide metadata



||||| Digital Object Identifier

e.g. 10.1234/fo

Optional. Did your  
others to easily an  
is always possible



||||| Reserve DOI

*Erasmus*

# Be FAIR: Findable

## What does it mean in practice?

- relevant data appear in search engines
- reliable hyperlinks



## Practical steps:

- deposit data in a repository
- claim persistent identifier (long lasting link)
- provide metadata



 **Publication date \***

2023-05-02

Required. Format: YYYY-MM-DD. In case your upload was already published elsewhere, please use the date of first publication.

 **Title \***

Required.

 **Authors \***

Family name, given names

Affiliation

 ORCID (e.g.: 0000-0002-18:  

Optional.

 Add another author

 **Description \***



# Be FAIR: Accessible

## What does it mean in practice?

- user needs to know how data can be accessed
- accessible is not the same as *open* or *free*

## Practical steps:

- choose how your data can be accessed
- specify clear conditions for access



Access right \*

- 🔓 Open Access
- ⌚ Embargoed Access
- 🔍 Restricted Access
- 🔒 Closed Access



# Be FAIR: Accessible

## What does it mean in practice?

- user needs to know how data can be accessed
- accessible is not the same as *open* or *free*

## Practical steps:

- choose how your data can be accessed
- specify clear conditions for access



### Access right \*

- Open Access
- Embargoed Access
- Restricted Access
- Closed Access

Required. Open access uploads have considerably higher vi

### Conditions \*

The screenshot shows the 'Conditions' section of the Zenodo interface. It features a rich text editor with various icons for text formatting: bold (B), italic (I), strikethrough (S), subscript (x<sub>2</sub>), and superscript (x<sup>2</sup>). There are also icons for links, lists, and a menu. Below the editor, there are two buttons: 'Source' and a refresh icon.

# Be FAIR: Interoperable



## What does it mean in practice?

- data need to integrate with other data
- possibility to open data in tools for analysis, storage, and processing
- now and in the future

## Practical steps:

- [use open file formats](#)
- if possible controlled vocabularies

### Preferred format(s)

- PDF/A (.pdf)
- ODT (.odt)
  
- ODS (.ods)
- CSV (.csv)
  
- SQL (.sql)
- SIARD (.siard)
- CSV (.csv)
  
- SPSS (.dat/.sps)
- STATA (.dat/.DO)
- JASP (.csv/.html)
- R

### Non-preferred format(s)

- Microsoft Word (.doc)
- Office Open XML (.docx)
- Rich Text File (.rtf)
- PDF other than PDF/A (.pdf)
  
- Microsoft Excel (.xls)
- Office Open XML Workbook (.xlsx)
- PDF/A (.pdf)
  
- Microsoft Access (.mdb, .accdb)
- dBase (.dbf)
- HDF5 (.hdf5, .he5, .h5)
  
- SPSS Portable (.por)
- SPSS (.sav)
- STATA (.dta)
- SAS (.7dat; .sd2; .tpt)
- JASP (.jasp)

# Be FAIR: Interoperable

## What does it mean in practice?

- data need to integrate with other data
- possibility to open data in tools for analysis, storage, and processing
- now and in the future



## Practical steps:

- use open file formats
- if possible **controlled vocabularies**



DDI Alliance Controlled Vocabulary for AnalysisUnit

### Code List

Code value	Code descriptive term	Code definition
Individual	Individual	Any individual person.
OrganizationOrInstitution	Organization/Institution	Any kind of formal administrative and functional structure - includes associations, institutions, agencies, businesses, political parties, schools, etc. The data are collected about the organizations or institutions, even if the questions are answered by individuals. For example, data on the environmental policies of businesses, data on enrollment or graduation rates at national universities, etc.
Family	Family	Two or more people related by blood, marriage (including step-relations), co-habitation or registered partnership, adoption or fostering, and who may or may not live together. For example, data on what kind of public services the family uses or would require; or how often family members are in contact with each other.
Family.HouseholdFamily	Family: Household family	A more specific term that refers only to people who are related through family ties (see definition for

# Be FAIR: Reusable

## What does it mean in practice?

- (meta)data should be well-described so that they can be reused

## Practical steps:

- [provide documentation](#)
- include clear data license
- let users know who to cite / to be acknowledged



readme  
file



questionnaire  
interview script



metadata



analysis script  
codebook



notes  
logbook

# Be FAIR: Reusable

## What does it mean in practice?

- (meta)data should be well-described so that they can be reused

## Practical steps:

- provide documentation
- **include clear data license**
- let users know who to cite / to be acknowledged

Access right \*

Open Access

Embargoed Access

Restricted Access

Closed Access

Required. Open access uploads have considerably higher visibility



License \*

Start typing a license name...

**Creative Commons Attribution 4.0 International**

Creative Commons Attribution 1.0 Generic

Creative Commons Attribution 2.0 Generic

Creative Commons Attribution 3.0 Unported

Creative Commons Attribution 3.0 Austria

Creative Commons Attribution 3.0 Germany

Creative Commons Attribution 3.0 IGO

# Be FAIR: Reusable

## What does it mean in practice?

- (meta)data should be well-described so that they can be reused

## Practical steps:

- provide documentation
- include clear data license
- let users know who to cite / to be acknowledged



### Cite as

Joanna Mania. (2023, February 27). Anonymization of qualitative data – a practical approach. Zenodo. <https://doi.org/10.5281/zenodo.7681425>

**American Psychological Association 7th edition**

**American Psychological Association 5th edition**

**American Psychological Association 6th edition**

**American Psychological Association 6th edition (no ampersand)**

# FAIR | Aware

At EUR we adapted a tool created to help researchers know how FAIR their data is:

<https://fair-aware.eur.nl/>



Your first step towards your FAIR data(set)



The tool is discipline-agnostic and can be used at any point during your research. The self-assessment consists of 10 questions with additional guidance texts specifically targeted to EUR-researchers, to help you become more aware of what you can do to make your data(set) as FAIR as possible. The assessment will take between 10-20 minutes, after which you will receive an overview of your awareness level and additional tips on how you can further improve your FAIR skills.

For any questions or comments on the tool, please send us an email to [datasteward@eur.nl](mailto:datasteward@eur.nl), for questions related to data management and discipline-specific resources, please contact your [faculty research data steward](#).

Acknowledgements: This tool is a version of the [FAIRAware tool developed by DANS](#). We collaborated with DANS to use and developed this tool targeted specifically to EUR researchers.

# FAIR | Aware – quick tour of the tool



Your first step towards your FAIR data(set)

The Erasmus logo, which is a stylized, handwritten-style signature of the word 'Erasmus' in black.



# Thank you!

Coming up:

October - Preparing your archival package

November - Privacy by design

December - Sharing qualitative data

See [schedule](#) for more information

Do you have suggestion for a topic?

Contact us via [EUR Research Data Stewards](#)



A handwritten signature in black ink, which appears to be 'Erasmus'.