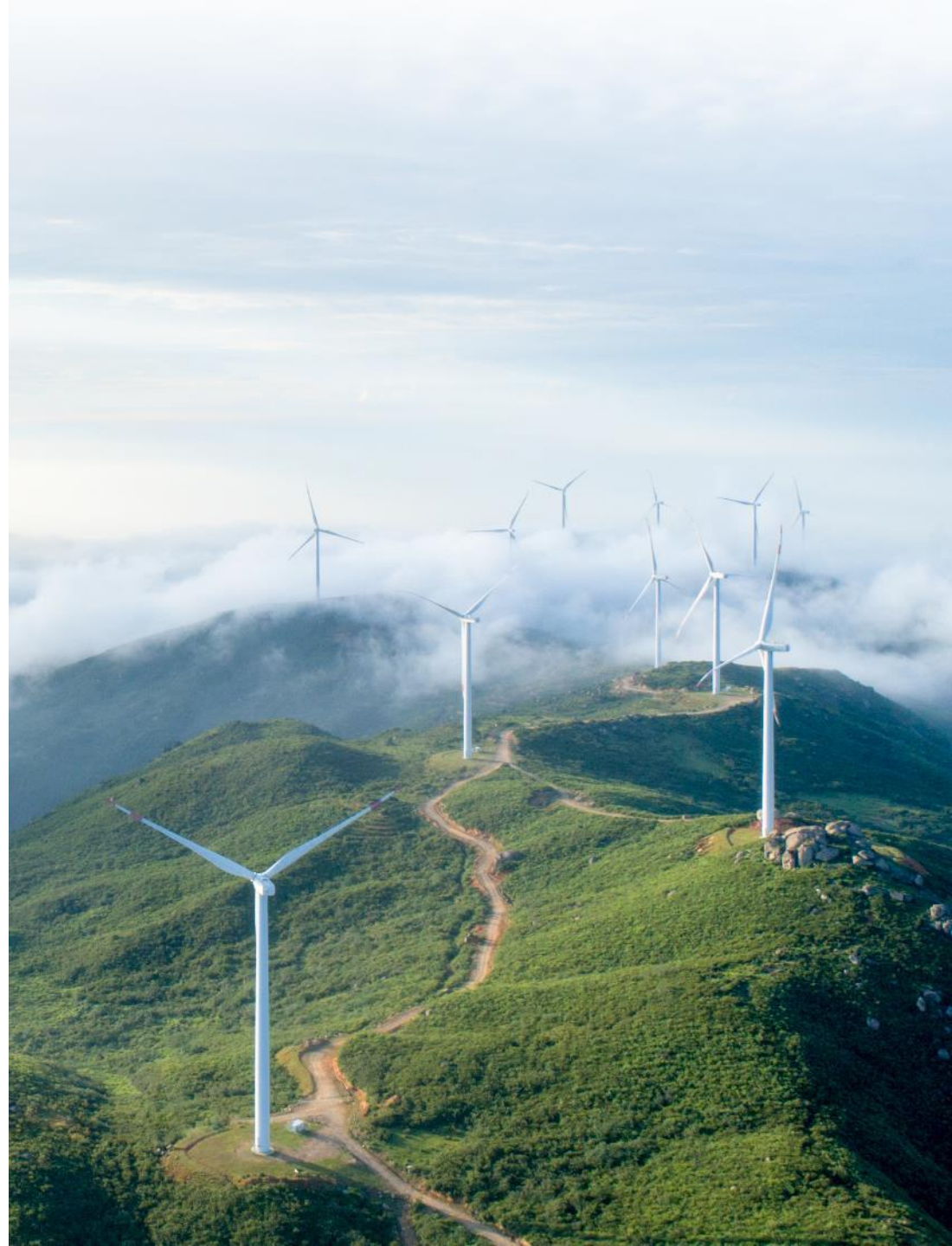




# WIND PROFILER BEAM 6X

*IEA TASK 52 GENERAL MEETING*



# Beam 6X – A new version of a well-known technology



Former Wind Pro (200m short-range wind profiler)



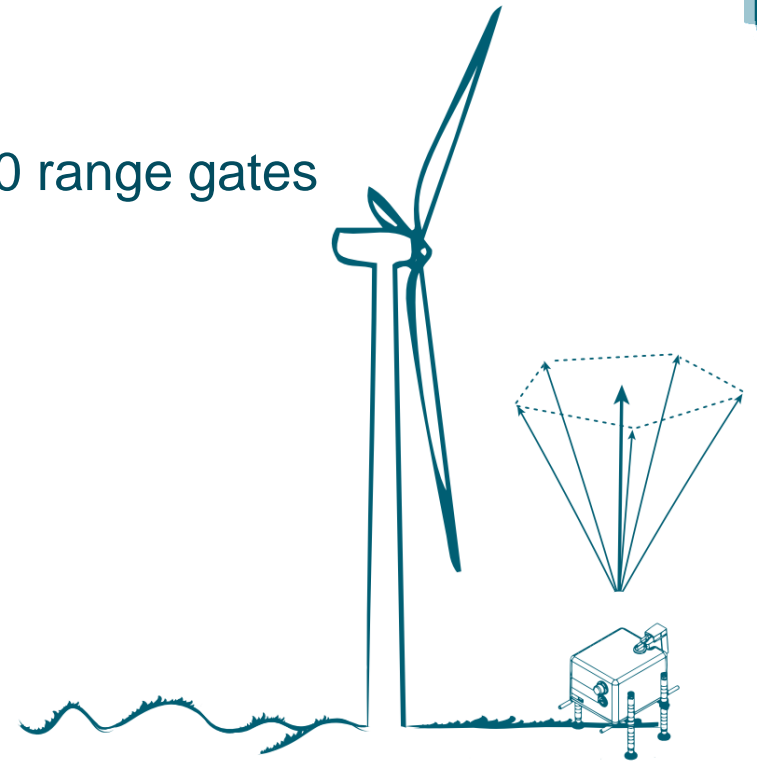
Streamline VS (12km long-range wind profiler)



Streamline Beam 6X (500m wind profiler)

# Focus on the Beam 6X features

1. Improved maximum **measuring heights** up to 500 m with 190 range gates  
-> *stronger amplifier, powerful acquisition board*
2. Improved **data availability** at 200-300 m  
-> *stronger amplifier, better SNR ratios*
3. Improved **turbulence measurements** with six beams geometry  
-> *Study demonstrated a favourable geometry, still to be proven in the field*  
(<https://doi.org/10.5194/amt-8-729-2015>)



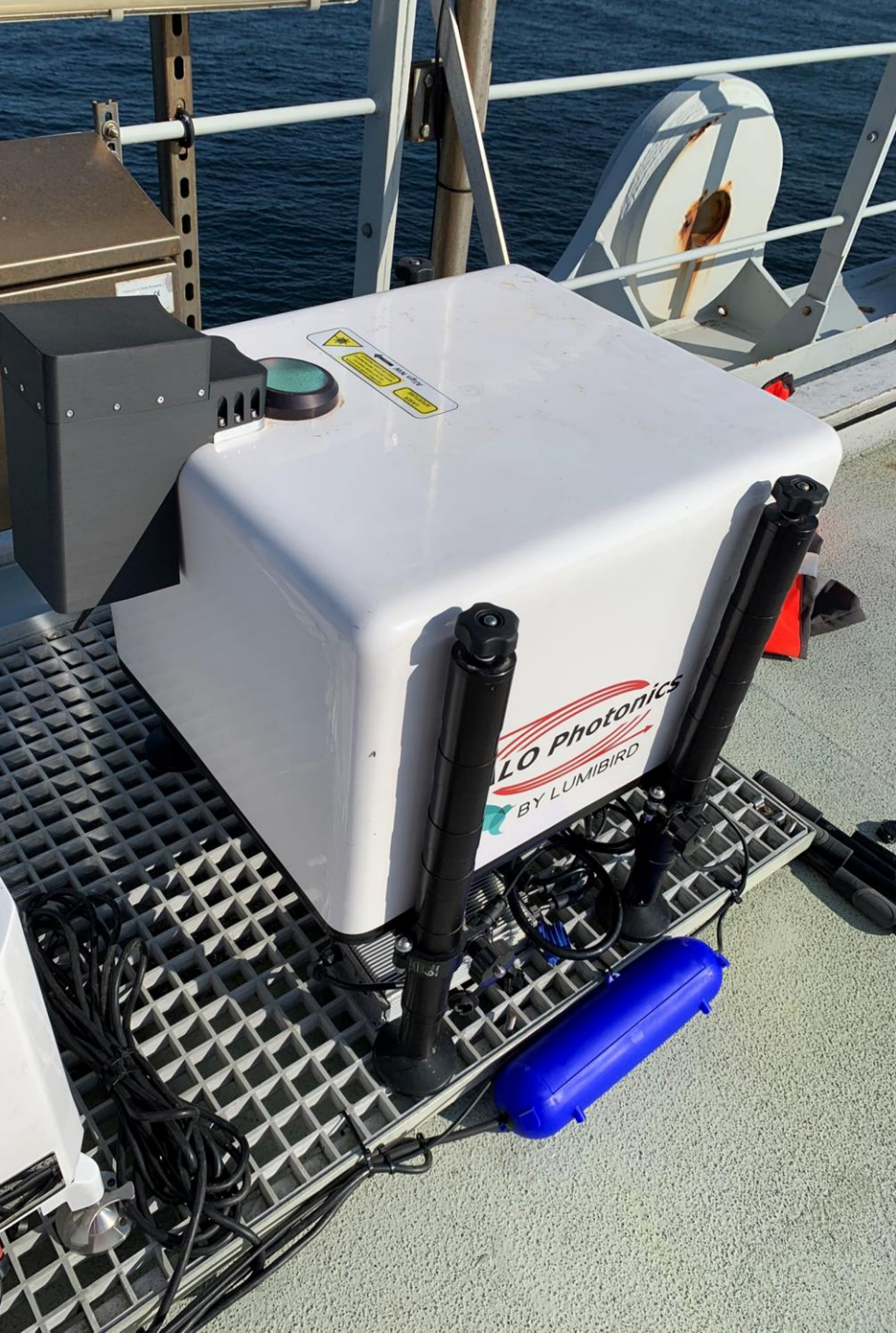
# Wind Lidars Overview



*All Sky Scanning Lidars XR & XR+*

**Beam 6X**





# Contacts & Information



<https://metek.de/>

[info@metek.de](mailto:info@metek.de)

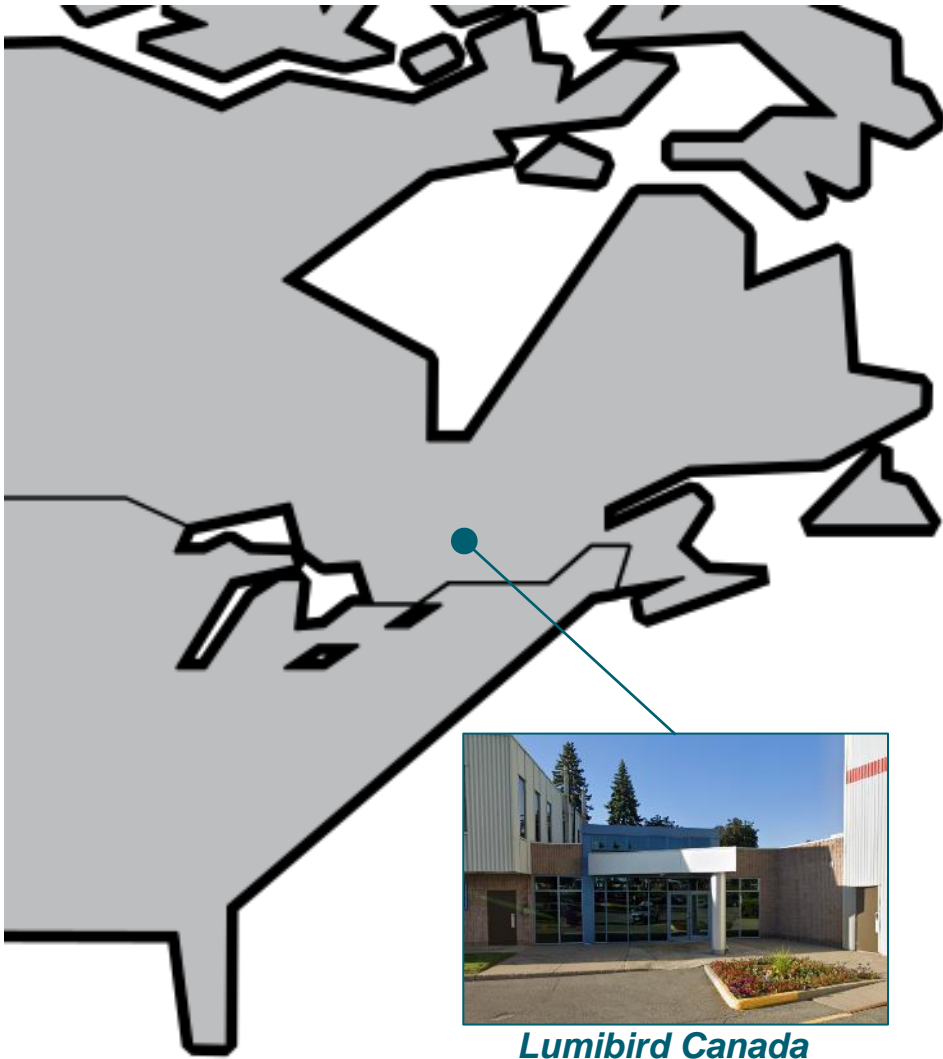


<https://halo-photonics.com/>

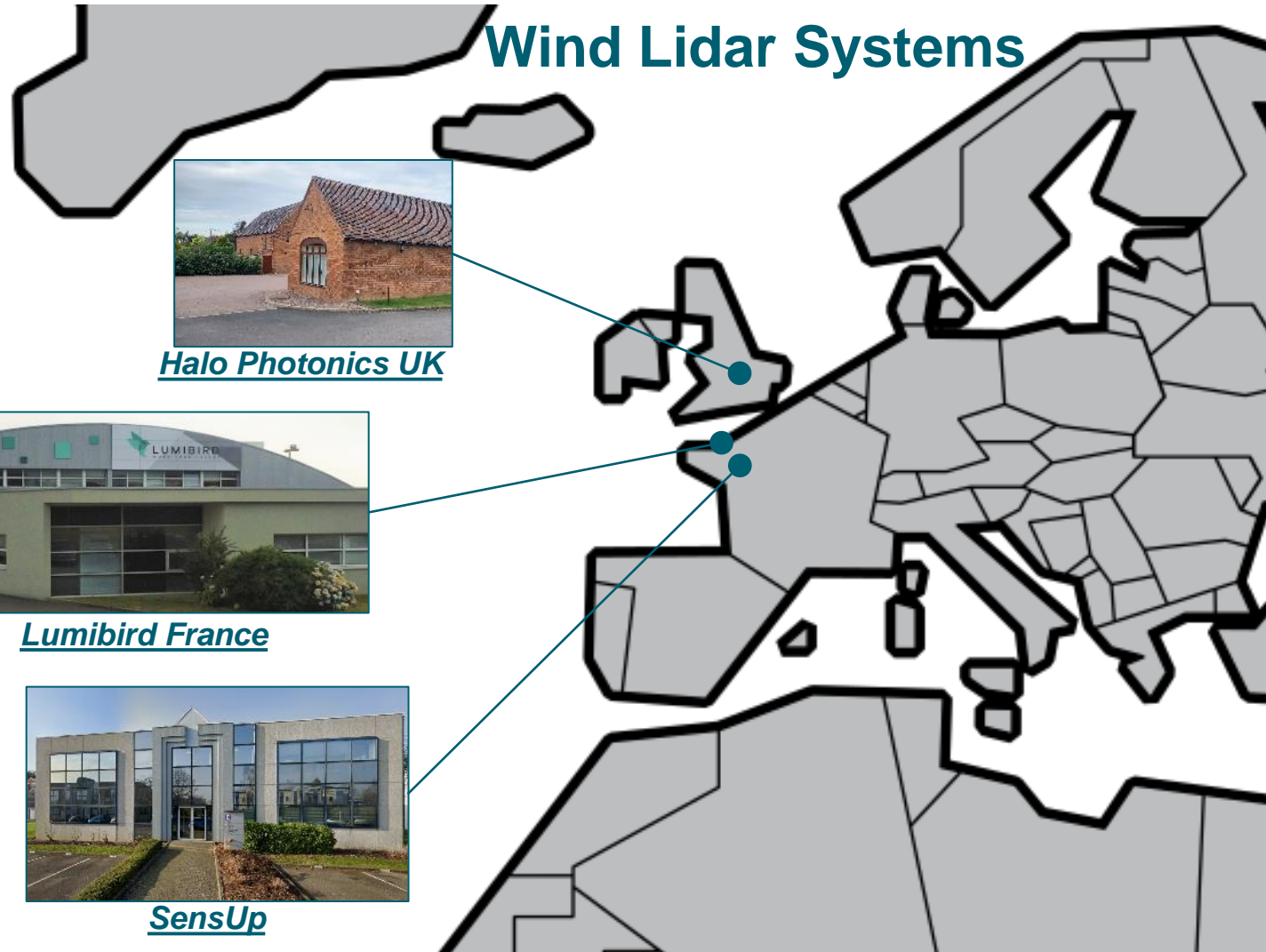
[Contact@halo-photonics.com](mailto:Contact@halo-photonics.com)

# THE LUMIBIRD WIND LIDAR DIVISION

## Wind Lidar Systems



Lumibird Canada



Halo Photonics UK



Lumibird France



SensUp

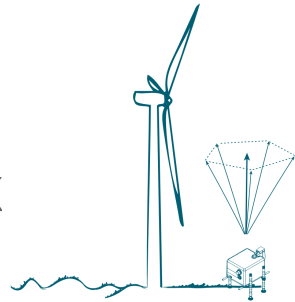


# WIND LIDARS PORTFOLIO

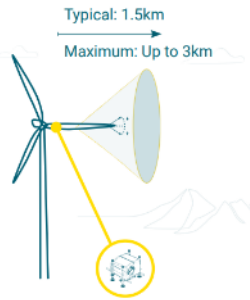
## Profiler Series



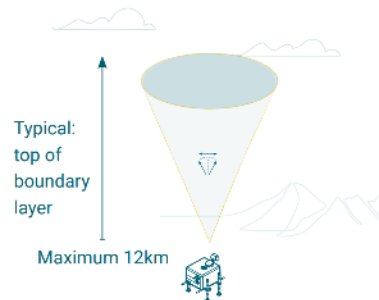
• Beam 6x



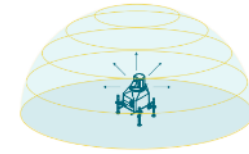
• Profiler HS



• Profiler VS



## AllSky Series



CR



XR



XR+



LR

