

**Methylation risk score in peripheral blood predictive of conversion
from mild cognitive impairment to Alzheimer's Disease**

Jarrett D. Morrow^{1#}

1. Channing Division of Network Medicine, Brigham and Women's Hospital, Boston, MA

Corresponding Author:

Jarrett D. Morrow, Ph.D., M.S.

Channing Division of Network Medicine

Brigham and Women's Hospital

181 Longwood Avenue, Boston, MA 02115

jarrett.morrow@channing.harvard.edu

Supplemental Figures

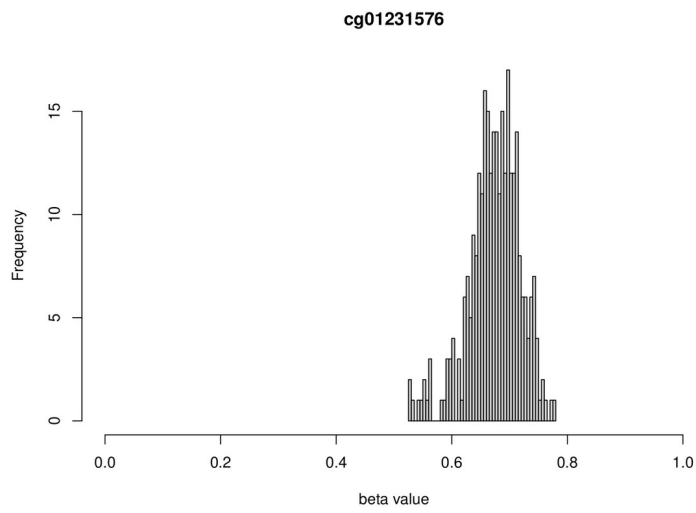


Figure S1. Histogram of beta values for CpG site cg01231576

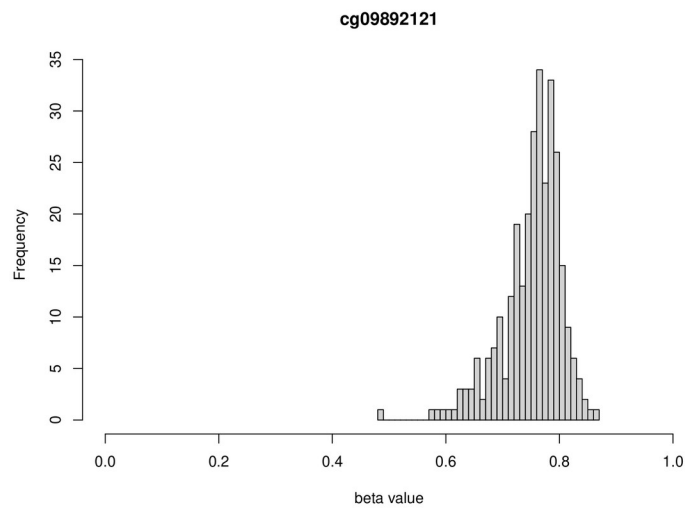


Figure S2. Histogram of beta values for CpG site cg09892121

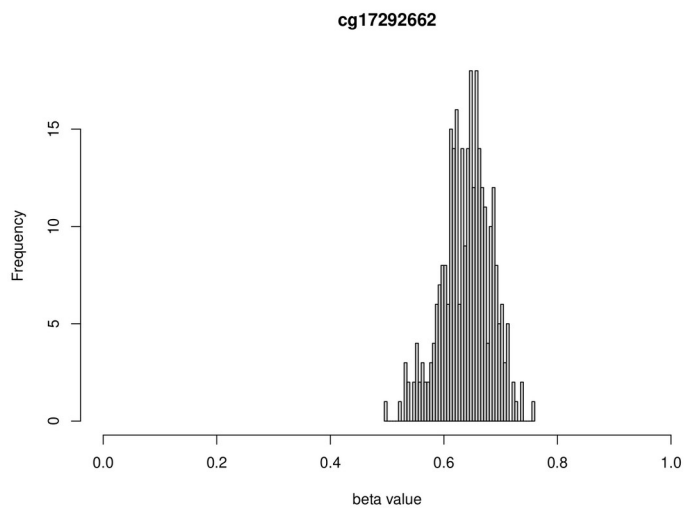


Figure S3. Histogram of beta values for CpG site cg17292662

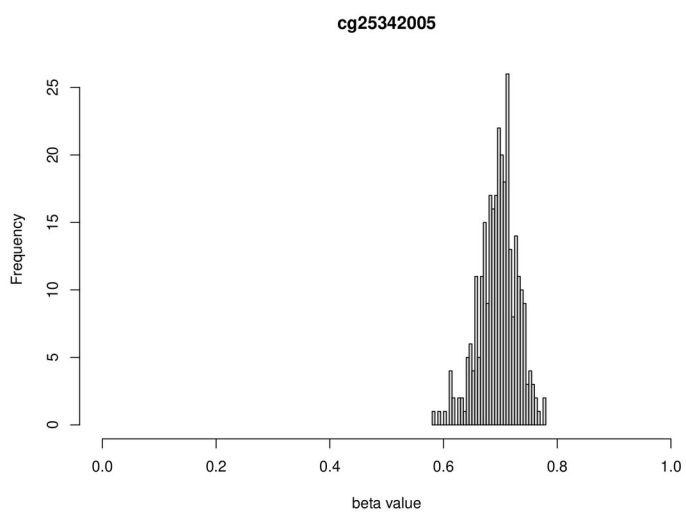


Figure S4. Histogram of beta values for CpG site cg25342005

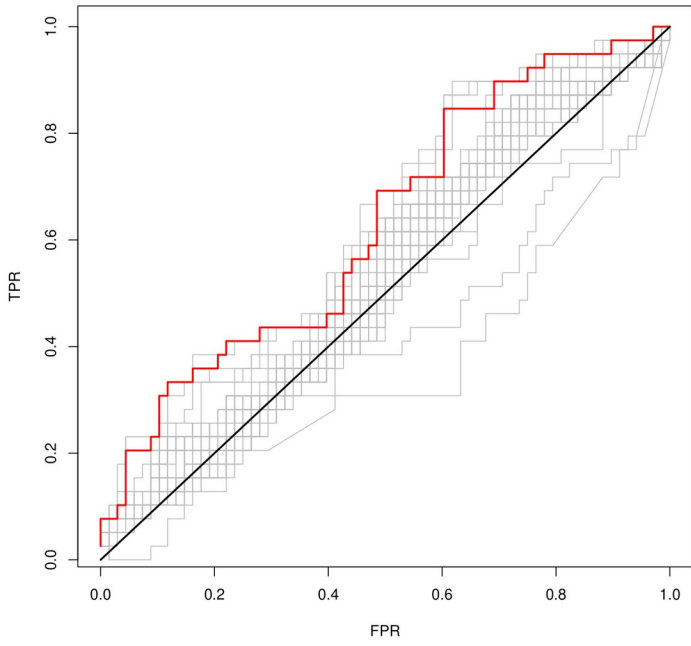


Figure S5. ROC curves for each of the 10-fold cross-validation folds

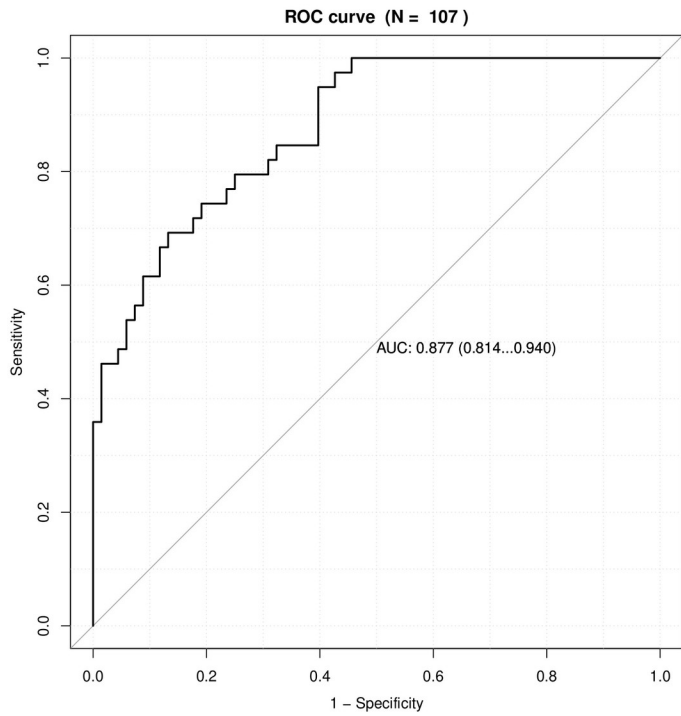


Figure S6. ROC curve for the final model with training data

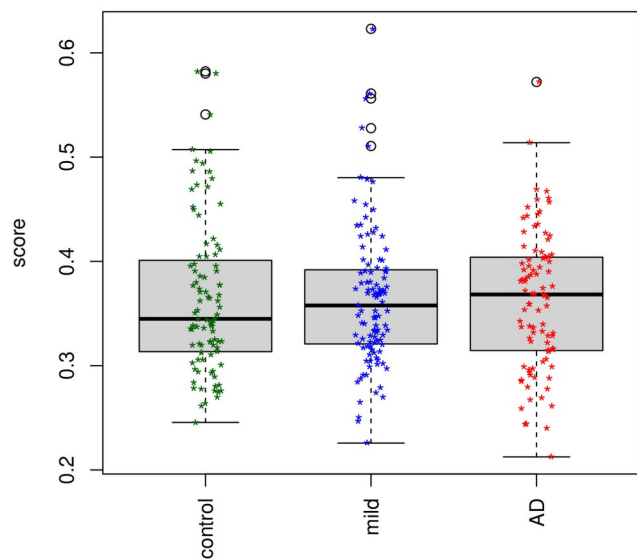


Figure S7. Box plots of the MRS for all subjects across baseline disease states

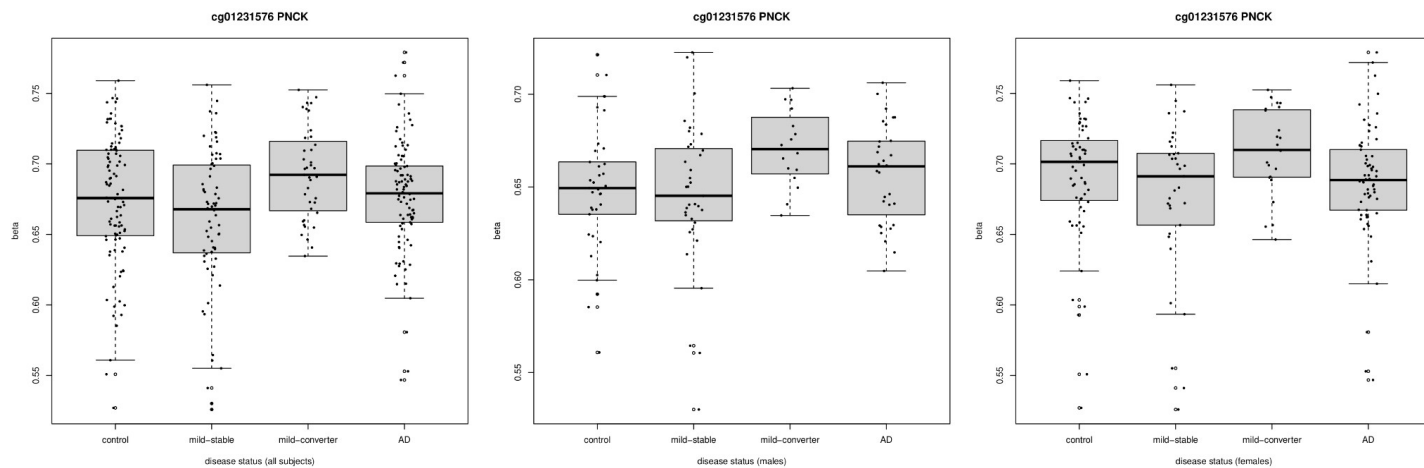


Figure S8. Beta values for the CpG site cg01231576 across disease severity (all subjects, males only and females only)

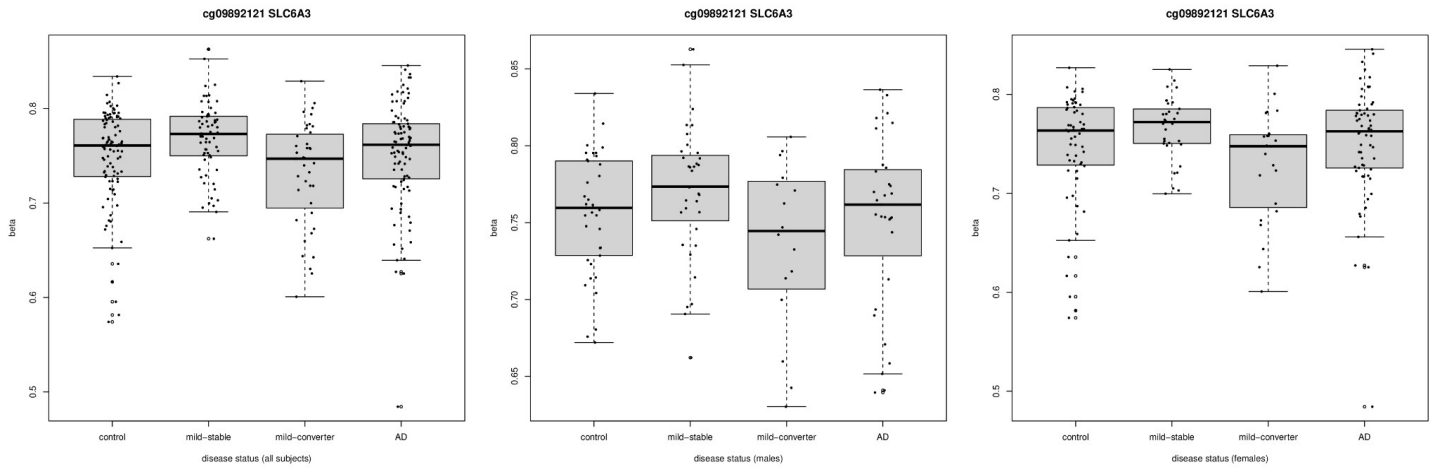


Figure S9. Beta values for the CpG site cg09892121 across disease severity (all subjects, males only and females only)

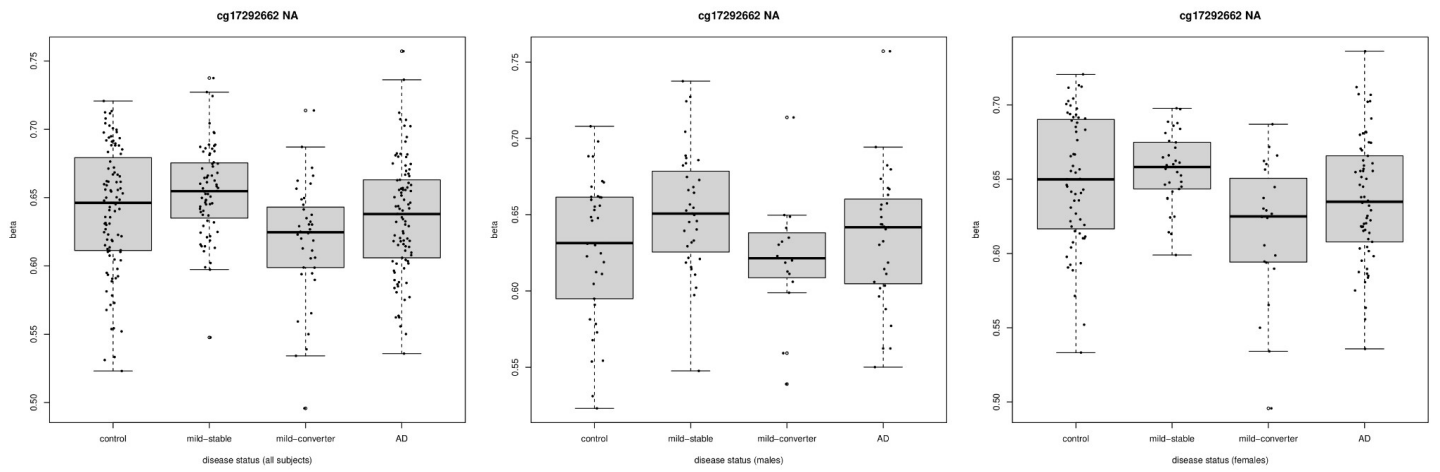


Figure S10. Beta values for the CpG site cg17292662 across disease severity (all subjects, males only and females only)

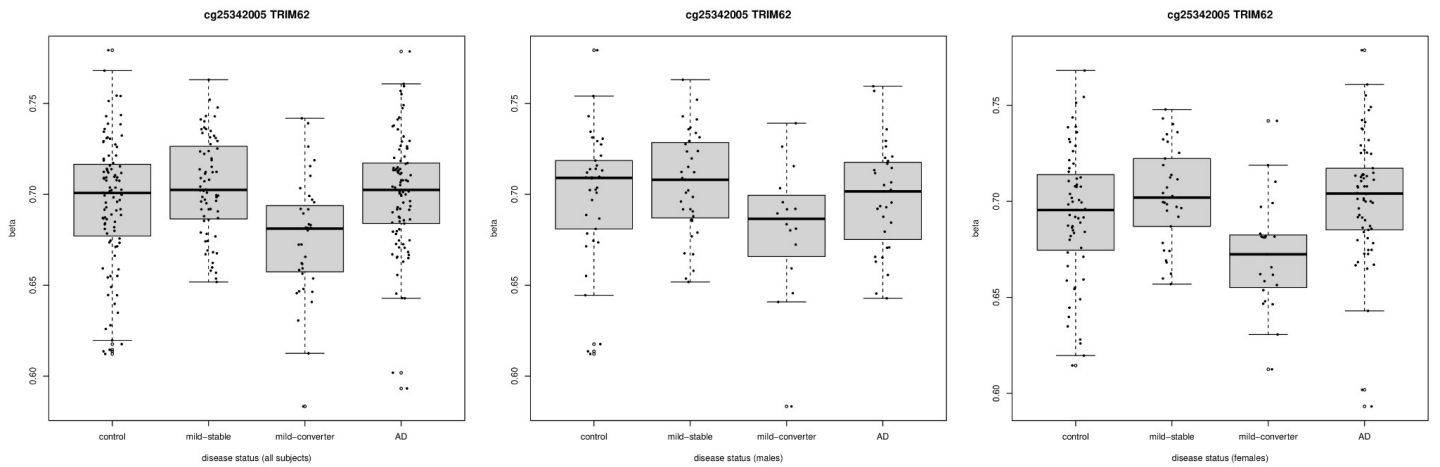
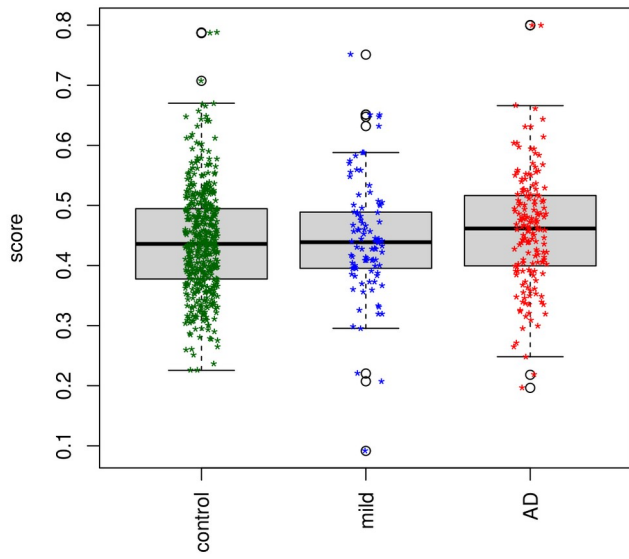
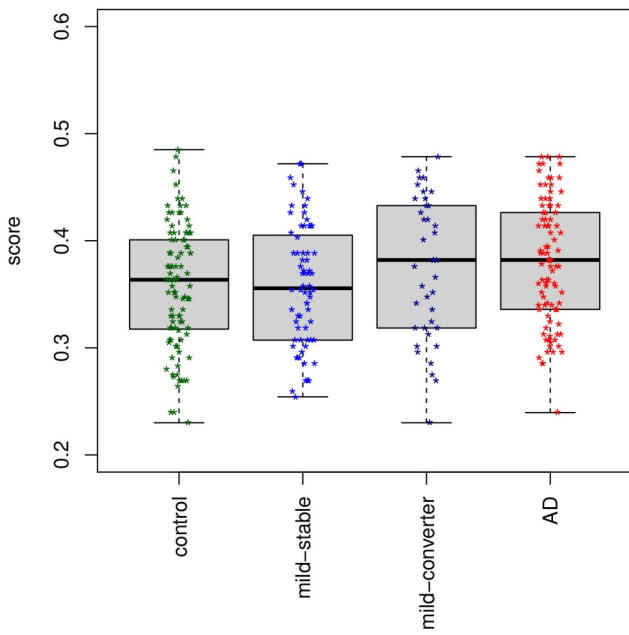


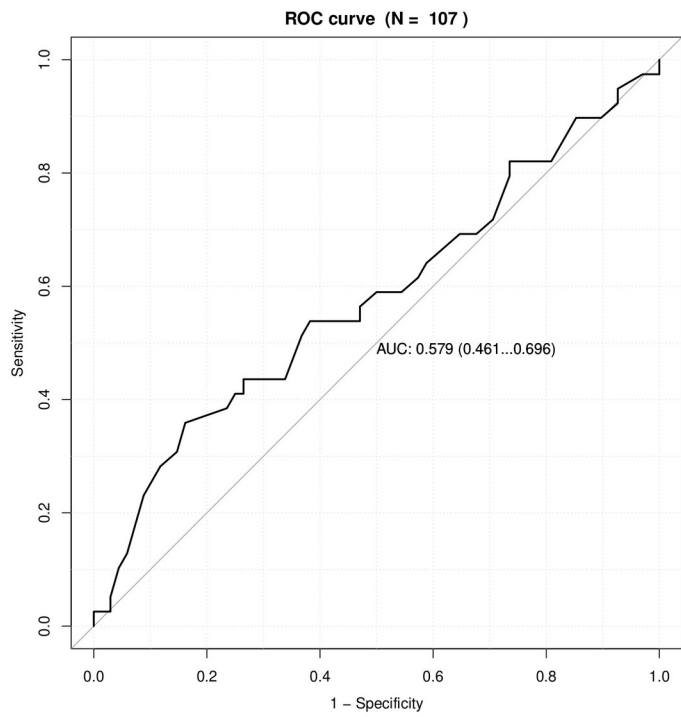
Figure S11. Beta values for the CpG site cg25342005 across disease severity (all subjects, males only and females only)



S12. Box plots of the MRS for all subjects in the secondary dataset across disease states



S13. Box plots of the risk score with age and sex predictors



S14. ROC curve for age and sex based risk score model with training data