



SEMI-SELECTIVE DEMOLITION: CURRENT DEMOLITION PRACTICES IN FLANDERS

Jef Bergmans, Philippe Dierckx, Sofie De Regel, Kris Broos (VITO)
Annelies Vanden Eynde (Tracimat/VCB)
Philippe Van de Velde (OVAM)



TOWARDS A MORE HIGH-GRADE RECYCLING

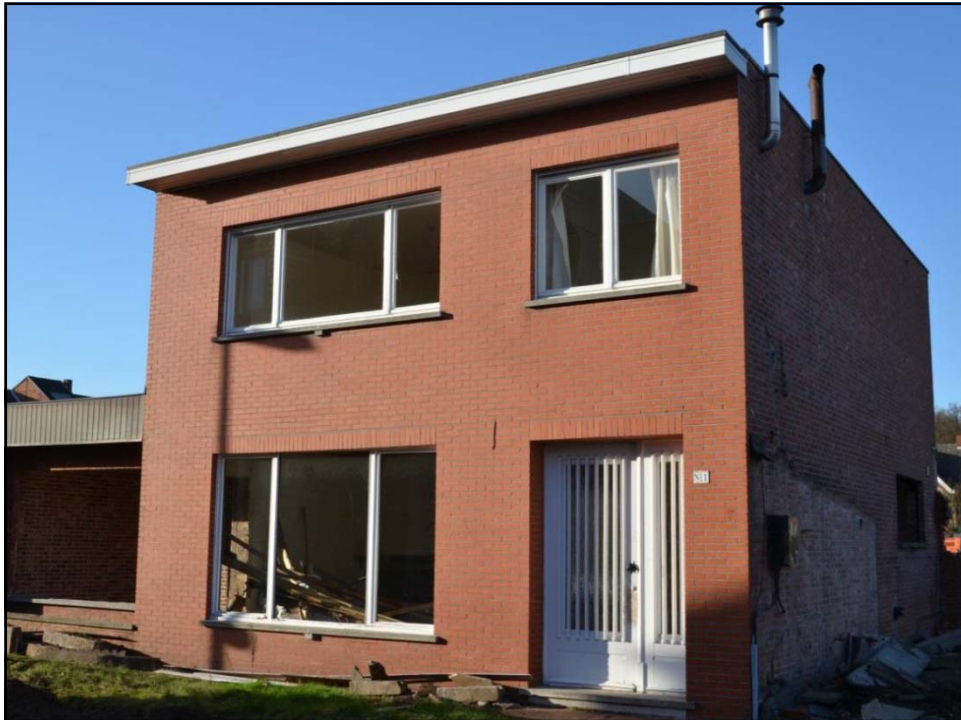
Selective demolition



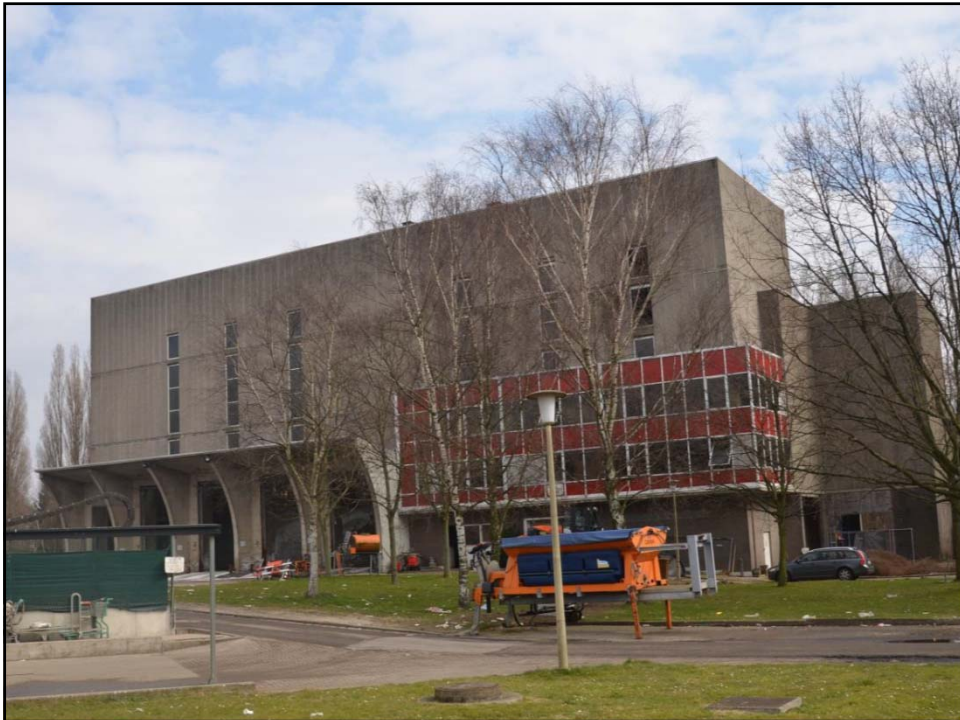


6 CASE STUDIES

3









SEMI-SELECTIVE DEMOLITION:
WHAT AND WHY?

INCENTIVES

- High landfill fees
- Landfill bans on recyclable fractions
- Standards for aggregate fractions
- Differential gate fees at recycling plants
- High value of some material fractions
 - Metals
 - Some reusable elements (antiques)
- Mandatory elimination of asbestos and other harmful materials (decontamination)

11



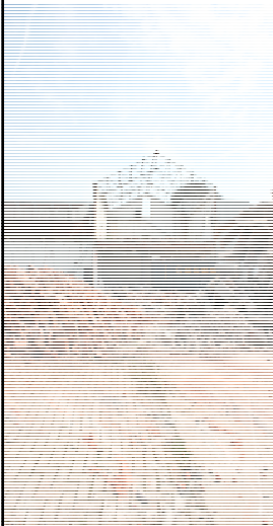
DECONTAMINATION



DISMANTLING & DECONSTRUCTION



STRUCTURAL DEMOLITION







PERFECT PICTURE?

17

Voettekst invulling



PUR PROBLEM



EPS PROBLEMS



CHALLENGES

- Complex materials
 - Cost efficient techniques for selective deconstruction and removal
 - Design to disassembly
- Public procurements: strong focus on financial aspects
- Quality of pre-demolition waste inventories => Tracimat
- Market development for high-grade recycled aggregates
- Valorisation pathways for the selectively removed fractions



ACKNOWLEDGEMENTS





QUESTIONS?

Jef.bergmans@vito.be

+32 14335616

23

Voettekst invulling

