

Figure 1 - graphQc

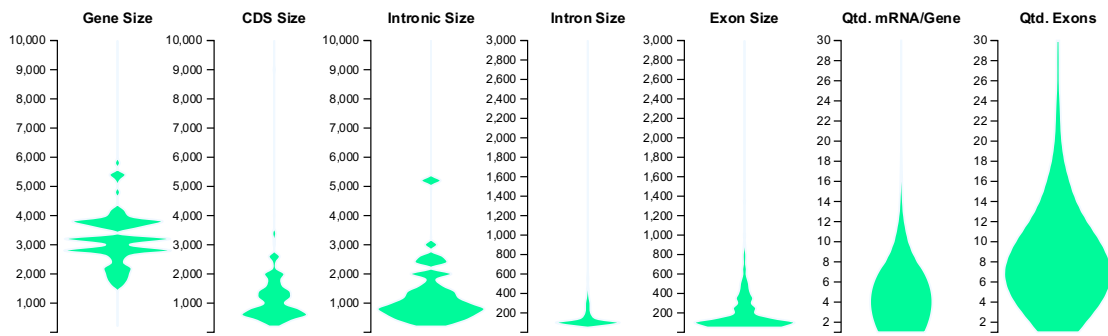


Figure 2 - graphGc

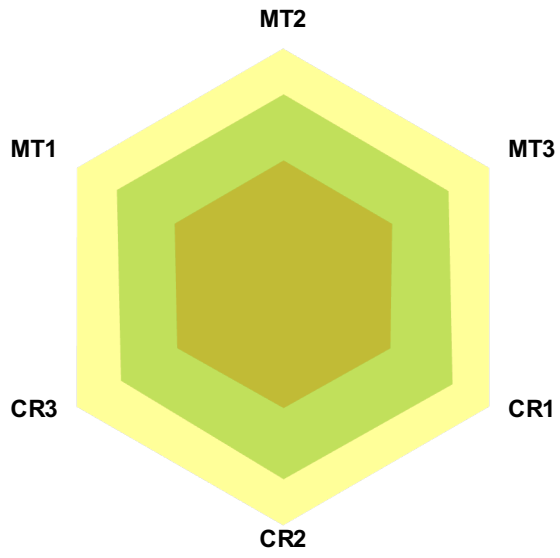


Figure 3 – graphRd

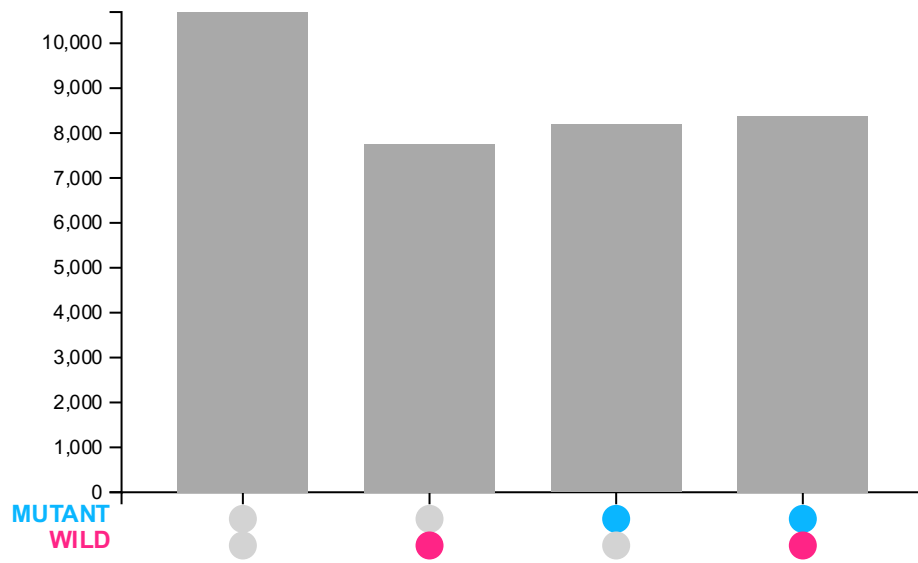


Figure 4 – graphUp

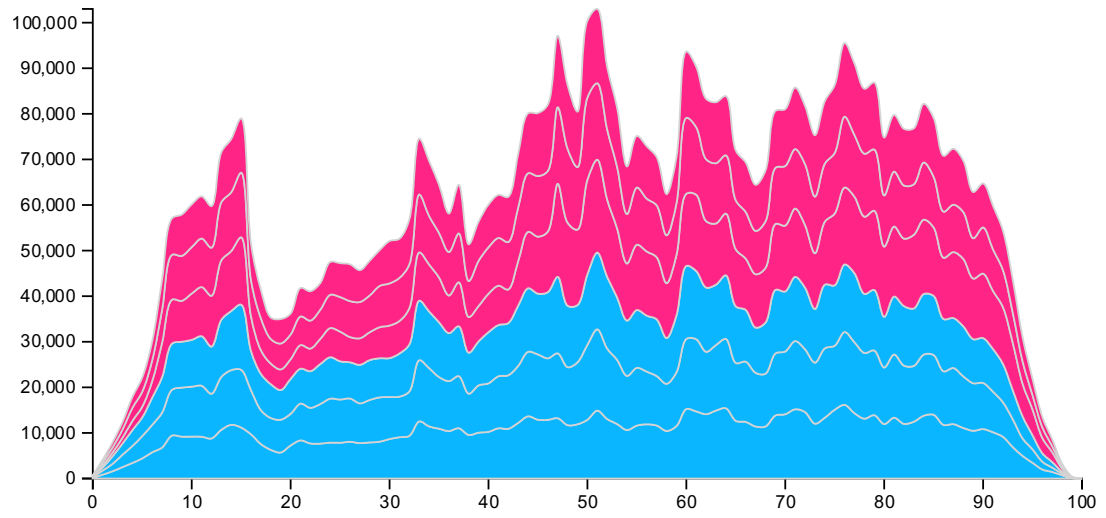


Figure 5 – graphCv

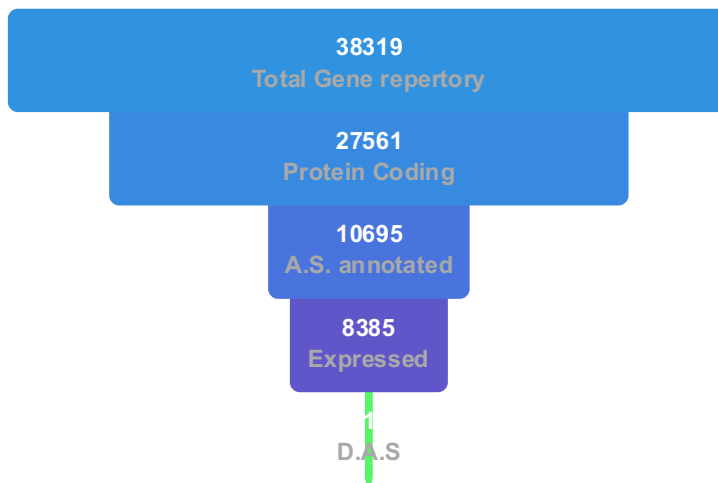


Figure 6 – graphAs

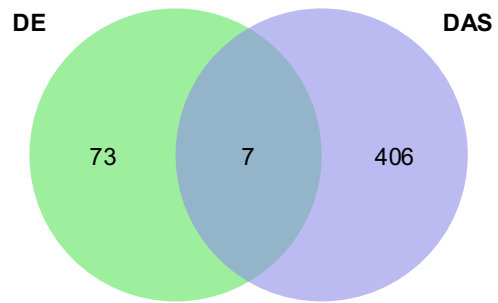


Figure 7 – graphVen

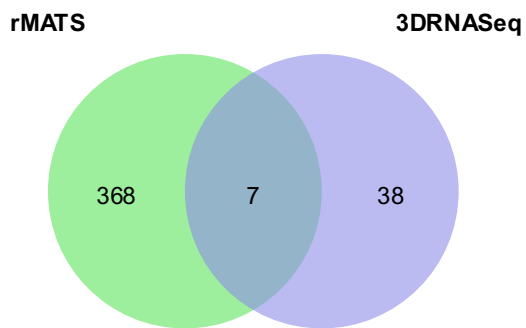


Figure 8 – graphMp

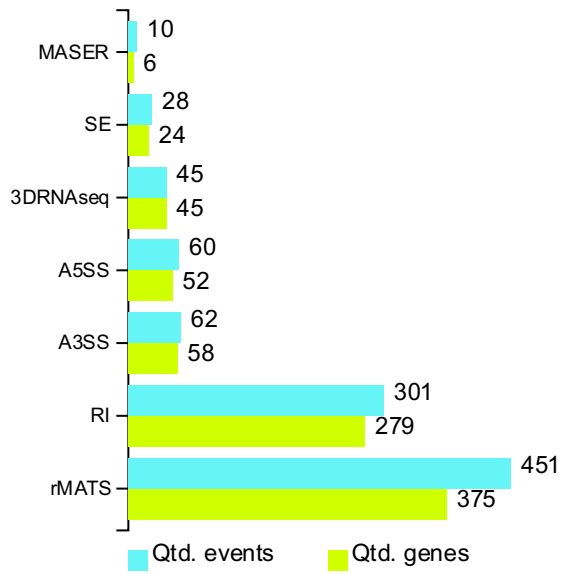


Figure 9 – graphBar

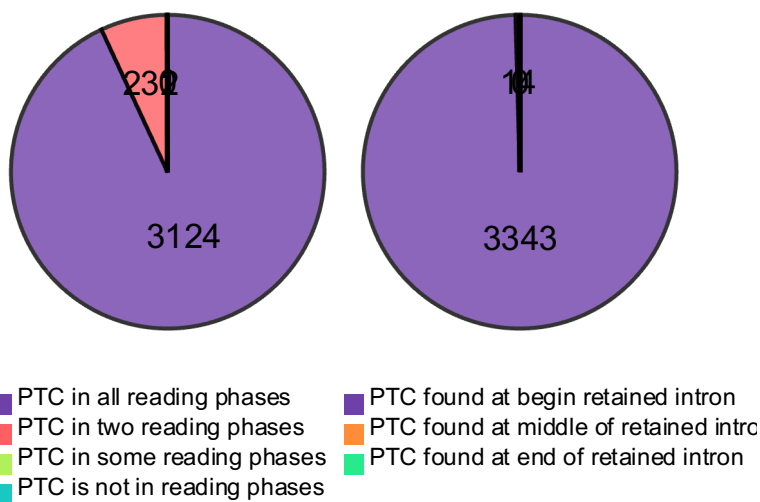


Figure 10 – graphPie

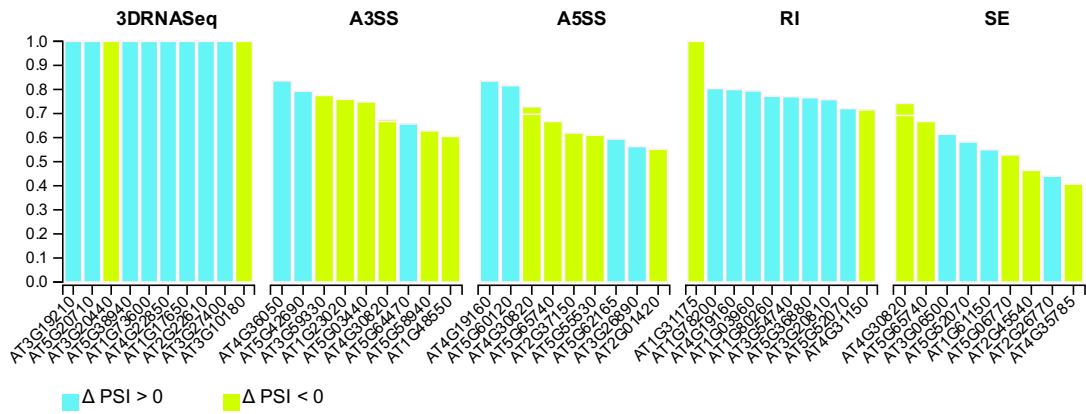


Figure 11 – graphTop

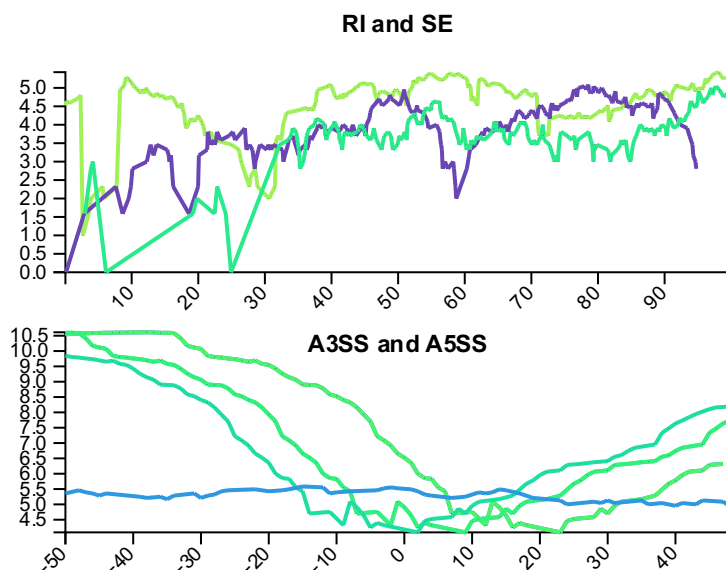


Figure 12 – graphCov

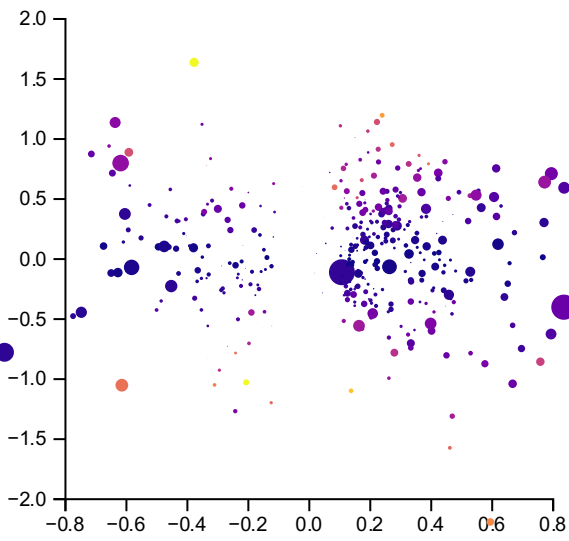


Figure 13 – graphDea

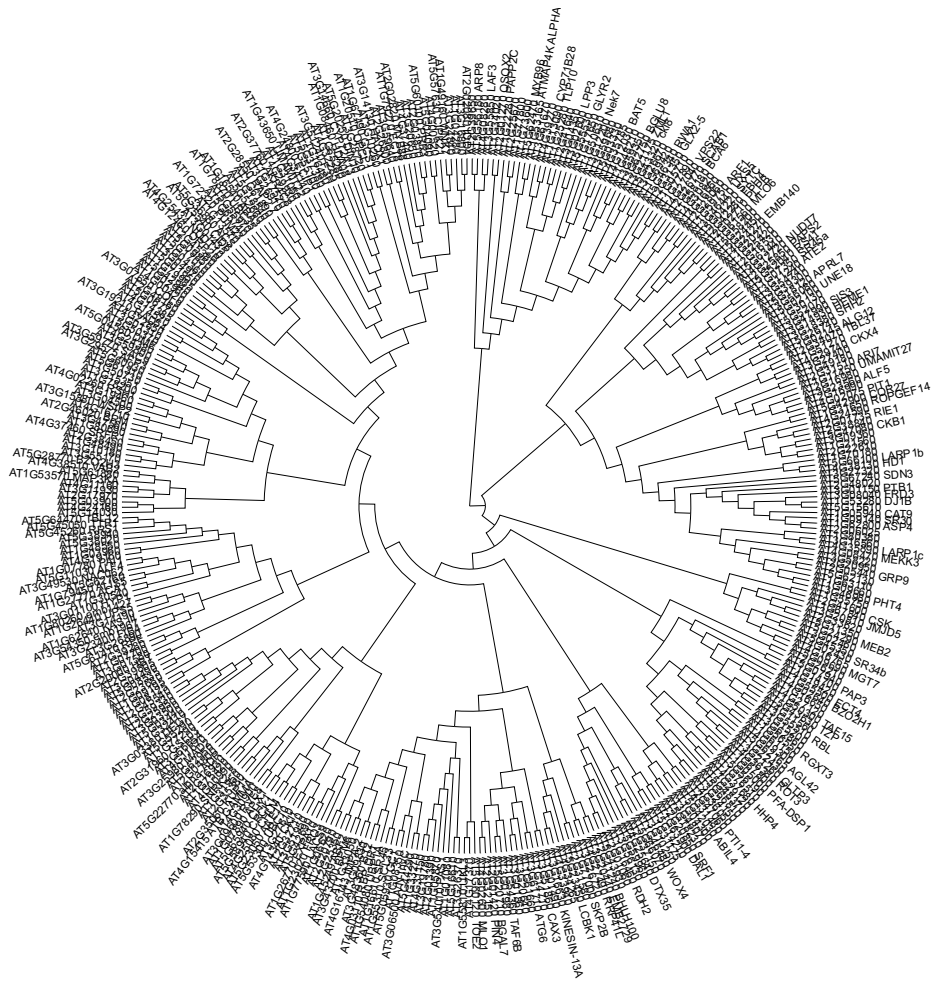


Figure 14 – graphFi

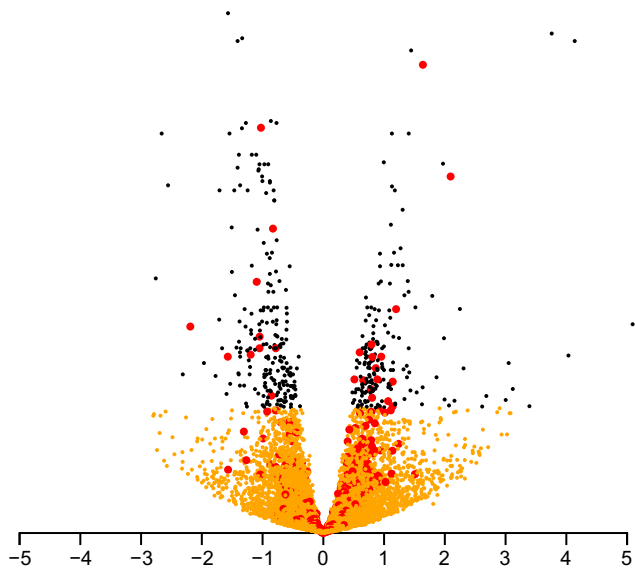


Figure 15 – graphDe

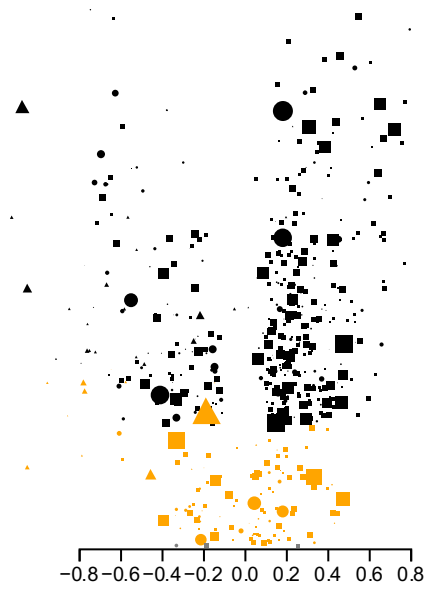


Figure 16 – graphScr



Figure 17 – graphDa

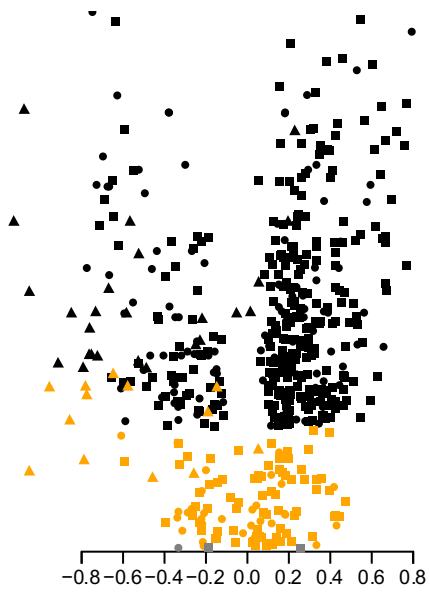


Figure 18 – graphDar

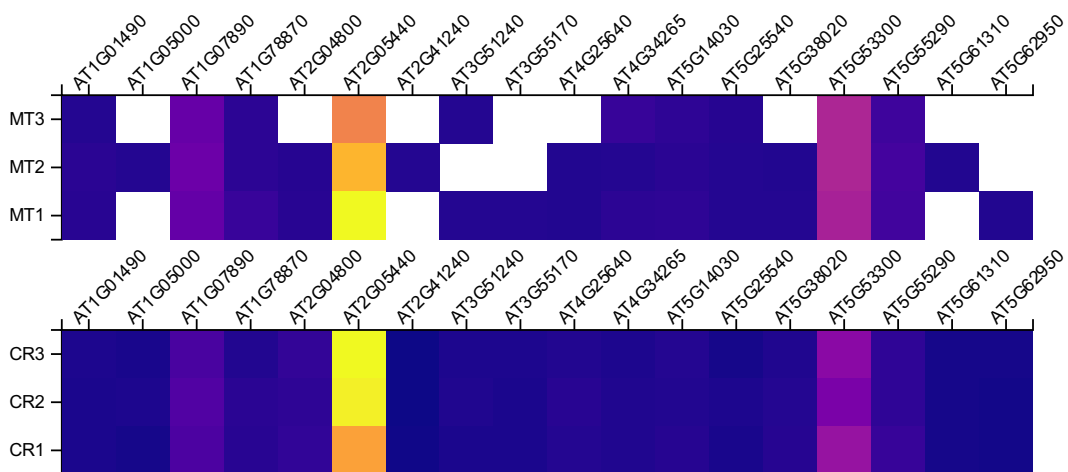


Figure 19 – graphHm

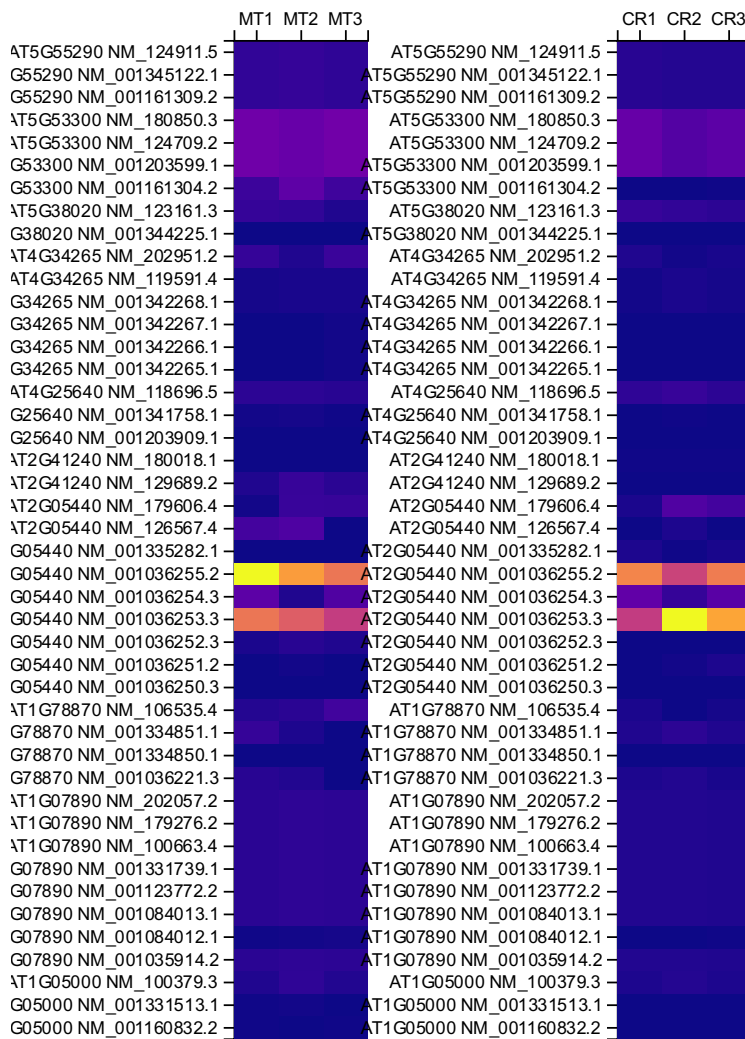


Figure 20 - graphHm2

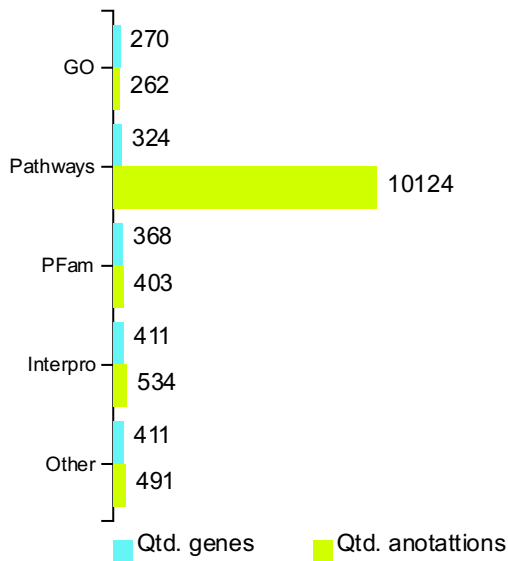


Figure 21 – graphAn



Figure 22 – graphWc

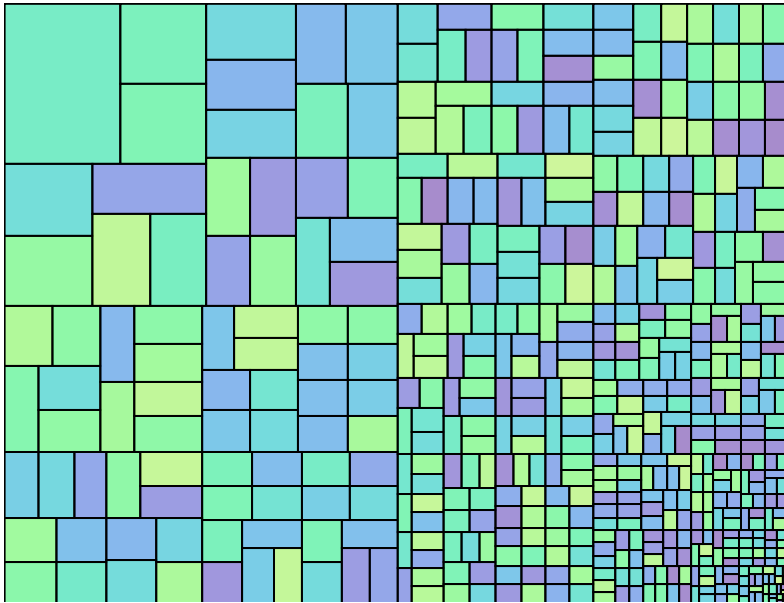


Figure 23 – graphTr. When user hover mouse above this recangles the Interpro ID is shown and on click user will be redirected to page with all information about its registry.

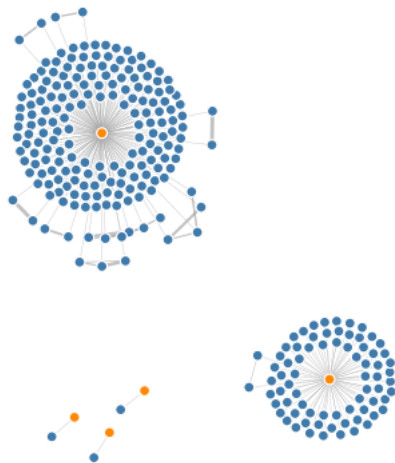


Figure 24 – graphLk

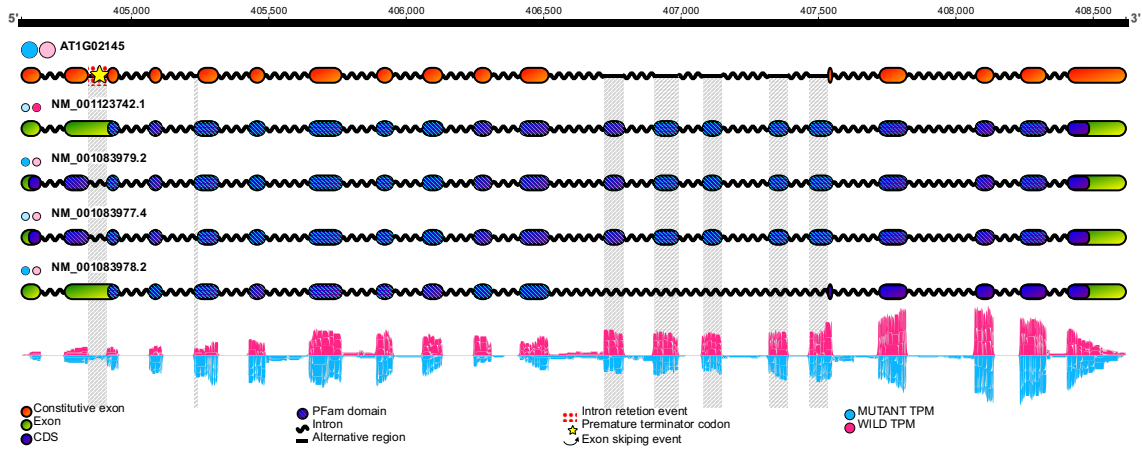


Figure 25 - gene-AT1G02145

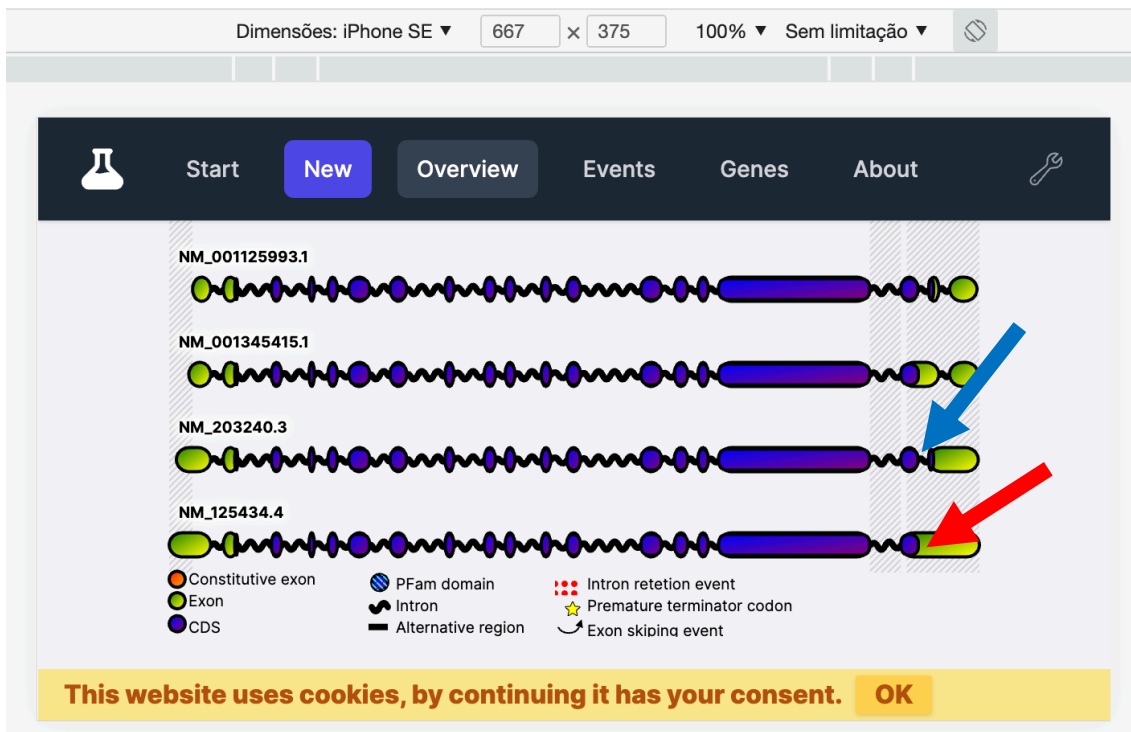


Figure 26 - GeneAPPEXplorer on mobile device.

DE and DTU transcripts

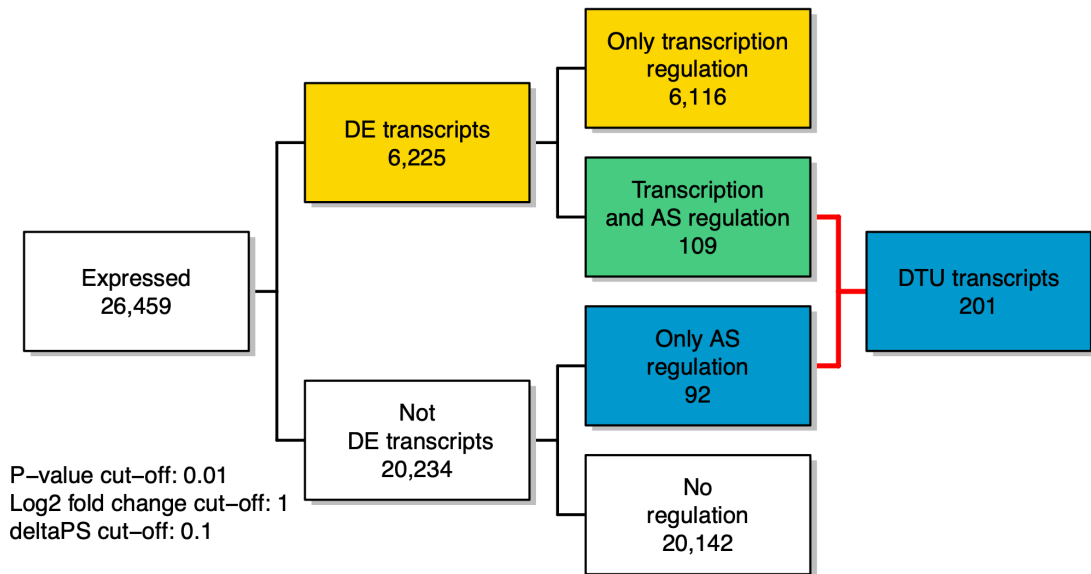


Figure 27 - DTU transcripts tree generated by 3DRNASeq.