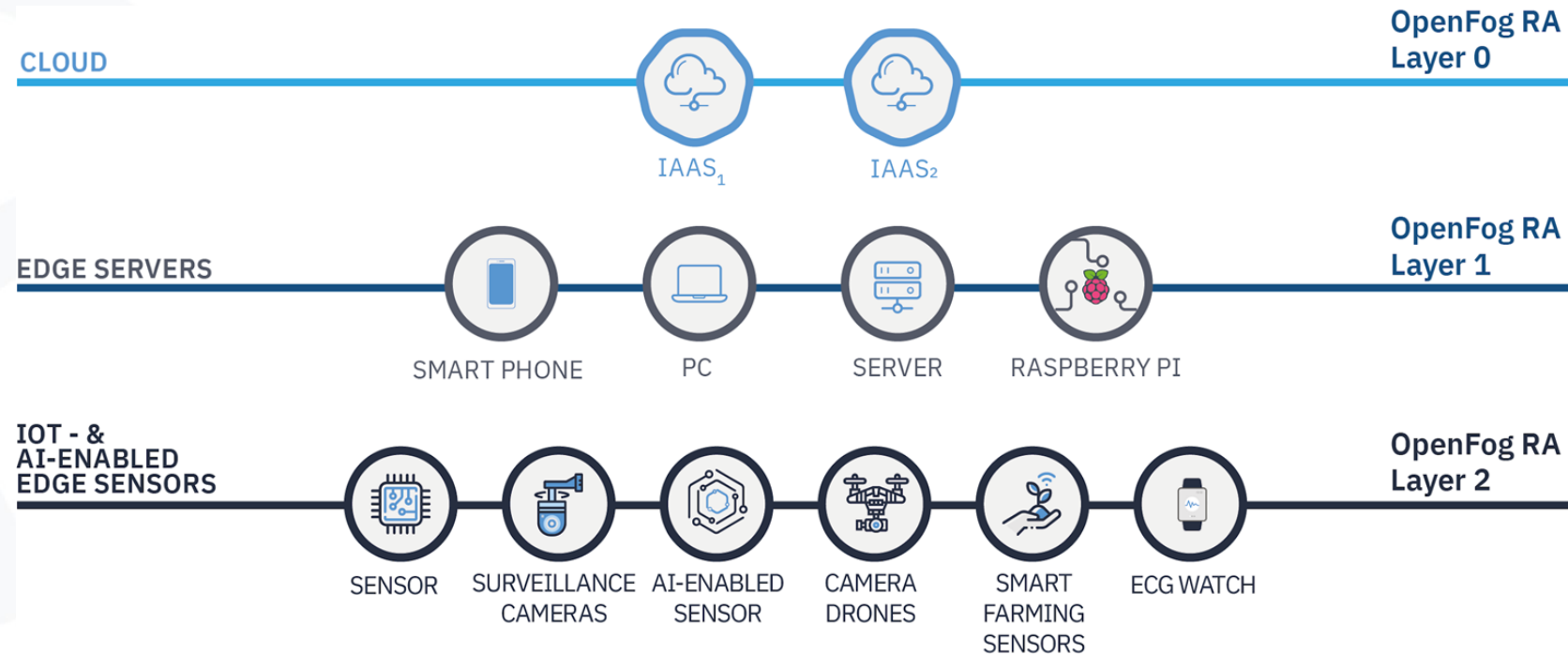


Context and setting the scene:
Use case Challenges and needs

Danilo Ardagna,
Politecnico di Milano

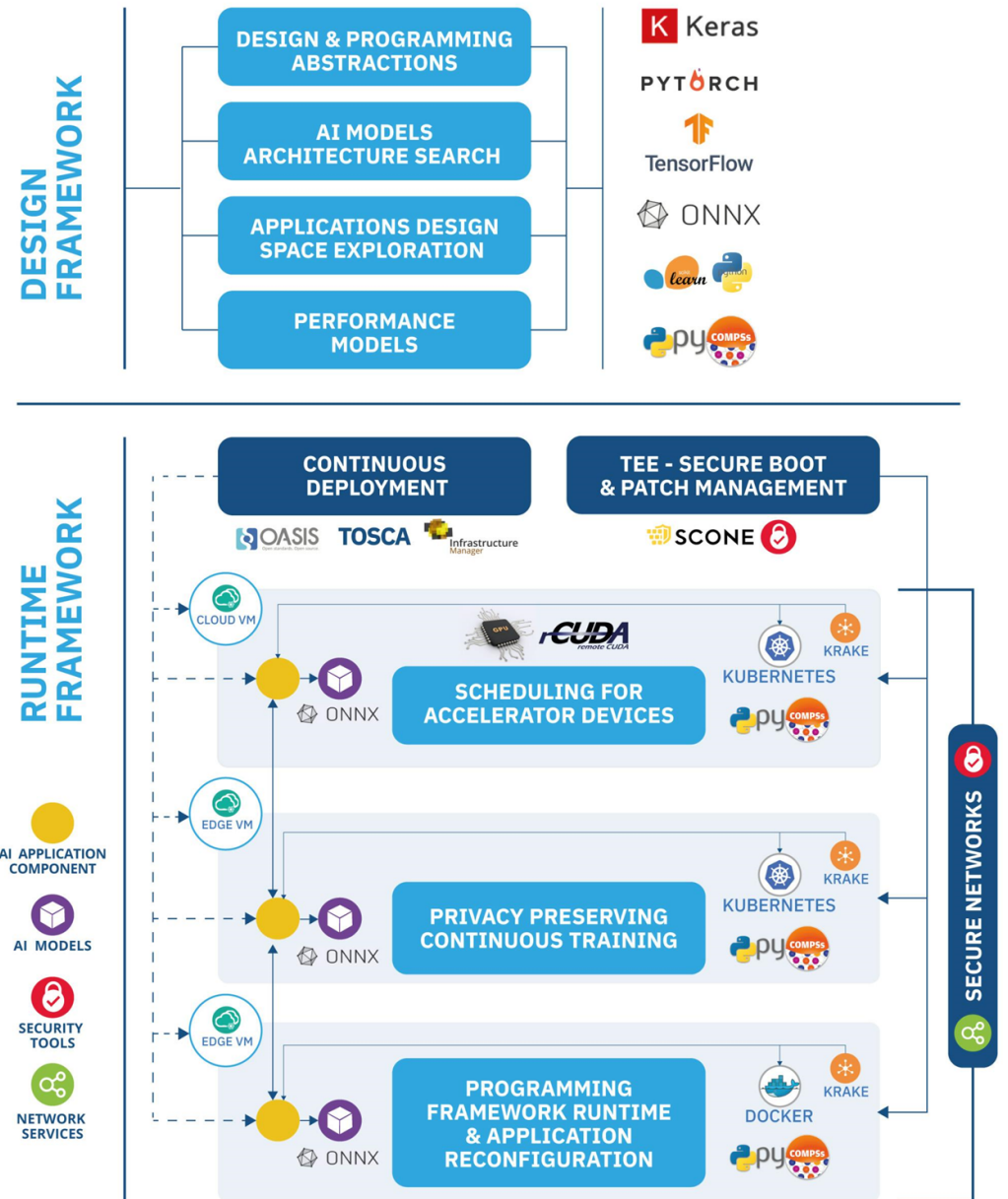
- By 2026, AI worldwide market will approach \$900 billion (CAGR 18.6%¹) while edge computing will reach \$324 billion (CAGR 13.6%²)
- AI needs resources at the edge of the network
- New challenges from the infrastructural perspective



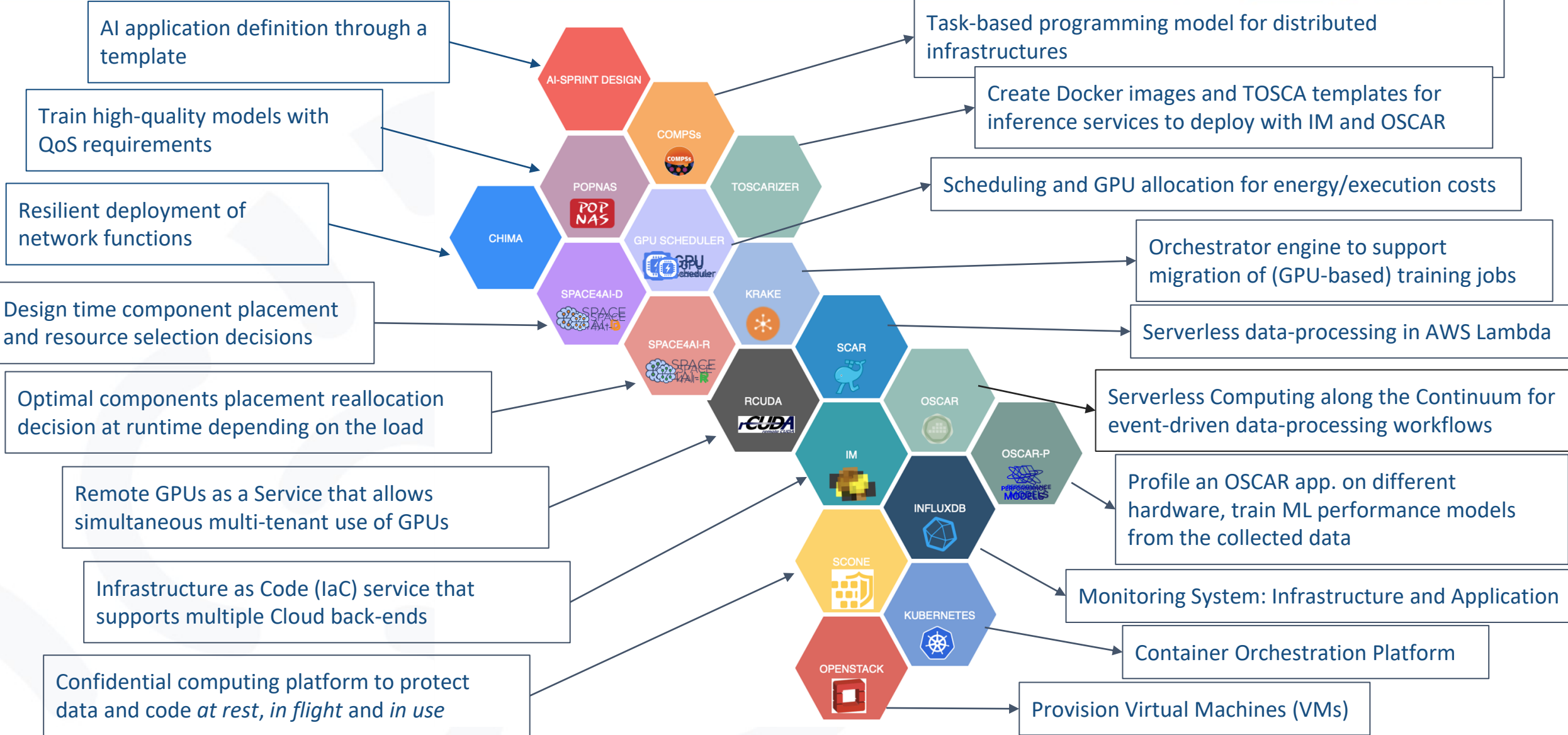
¹IDC Semiannual Artificial Intelligence Tracker, July 2022

²IDC Worldwide Edge Spending Guide, August 2022

- Simplified programming models
- Automated deployment and dynamic reconfiguration
- Secure execution of AI applications
- Highly specialized building blocks for privacy preservation, distributed training, and architecture enhancement
- Open source



Main Technological Components





Personalised Healthcare

Developing an automated system for personalised stroke risk assessment and prevention.



Maintenance & Inspection

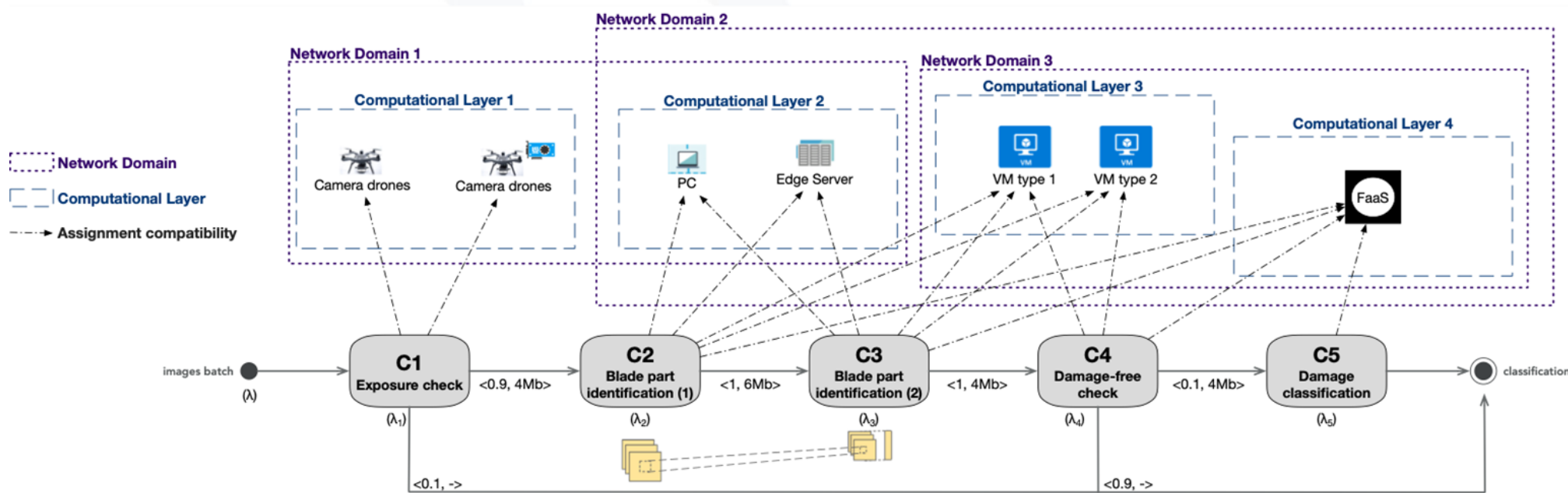
Creating an infrastructure that reduces downtime and revenue losses caused by degenerative asset performance.



Farming 4.0

Delivering edge and intelligent sensors to optimise phytosanitary treatments.

AI-SPRINT: Maintenance and Inspection Use case





Your Entry Point to AI & Edge European Innovations

Welcome gift – An IDC Market Report in the Healthcare, Maintenance & Inspection and Farming 4.0 industry in Europe

Free use of the advanced **AI-SPRINT Open Source components & technical support** on their usage

Easy integration of AI-SPRINT components into your applications

Visibility on AI-SPRINT channels of your **integrated solutions** and how it works

Special guest invites to **focused AI-SPRINT events**

An engaged, expert community to **share your best practices** and expertise

DEMAND

What do I get out of joining the Alliance?

Multiple Opportunities

SUPPLY

What can I offer the Alliance?

Your **technological solution** and expertise

Utilise the integrated solutions in **other domain areas** of your expertise

Provide advanced recommendations from a technological perspective to European Funders and Regulators

Contribute to the **Open Source community**

<https://ai-sprint-project.eu/ai-sprint-alliance>