



A European Discovery Platform for the SSH

Francesca Di Donato | **CNR-ILC** | December 3rd 2020 | FAIR Convergence
Symposium

Discover
Connect
Collaborate

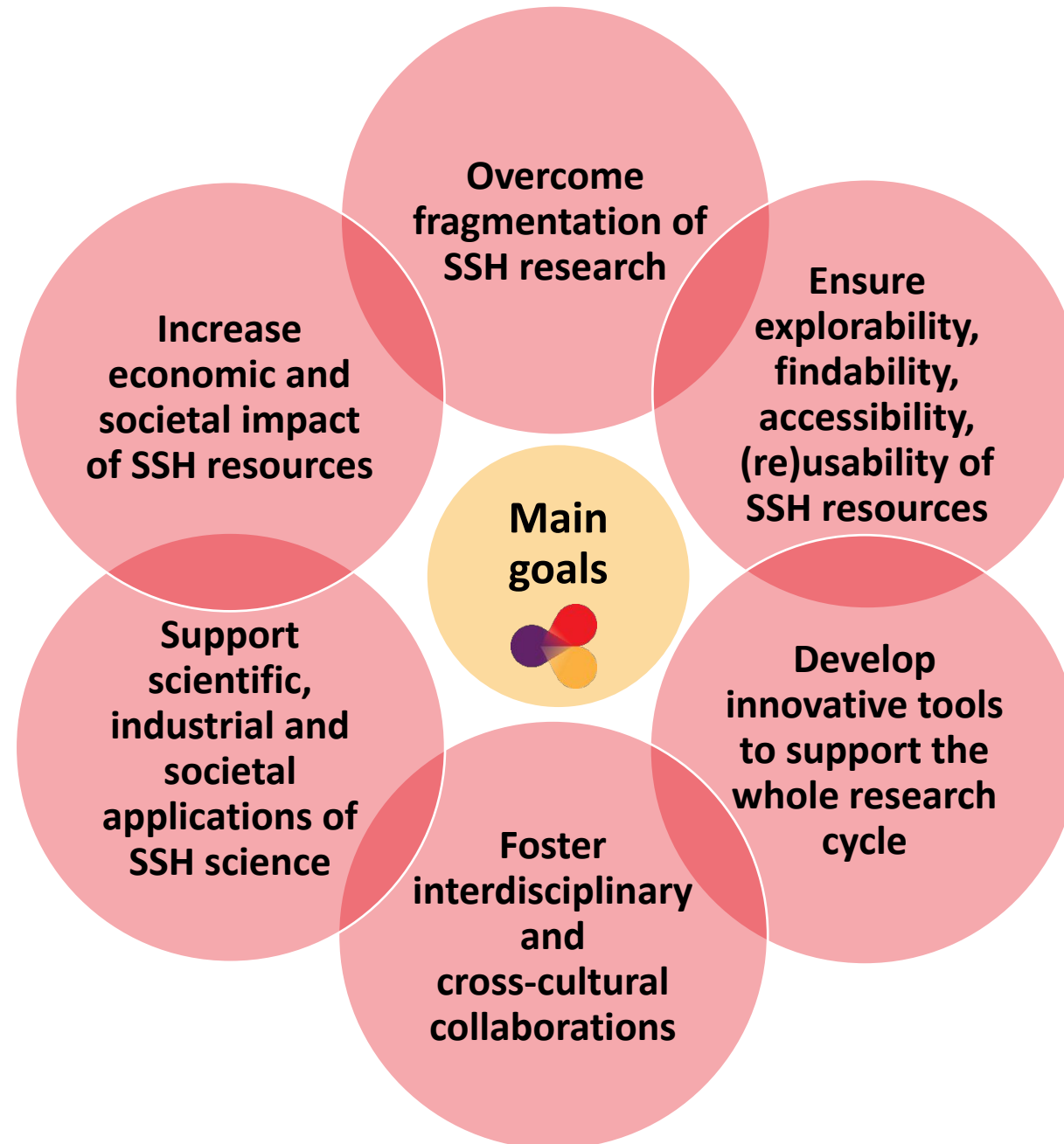


TRIPLE project: Key facts

- launched on 1 October 2019
- duration of 42 months (2019–2023), consortium of 20 partners from 13 European countries
- financed under the Horizon 2020 framework - Call [INFRAEOSC-2-2019](#):
“**Prototyping new innovative services**” of the Horizon 2020 parent programme [“Development, deployment and operation of ICT-based e-infrastructures”](#)
- Coordinated from France by Huma-Num, a unit of the French National Centre for Scientific Research (CNRS)
- currently 87 staff members working for one or more of the 8 work packages



TRIPLE: Main goals



Discover
Connect
Collaborate

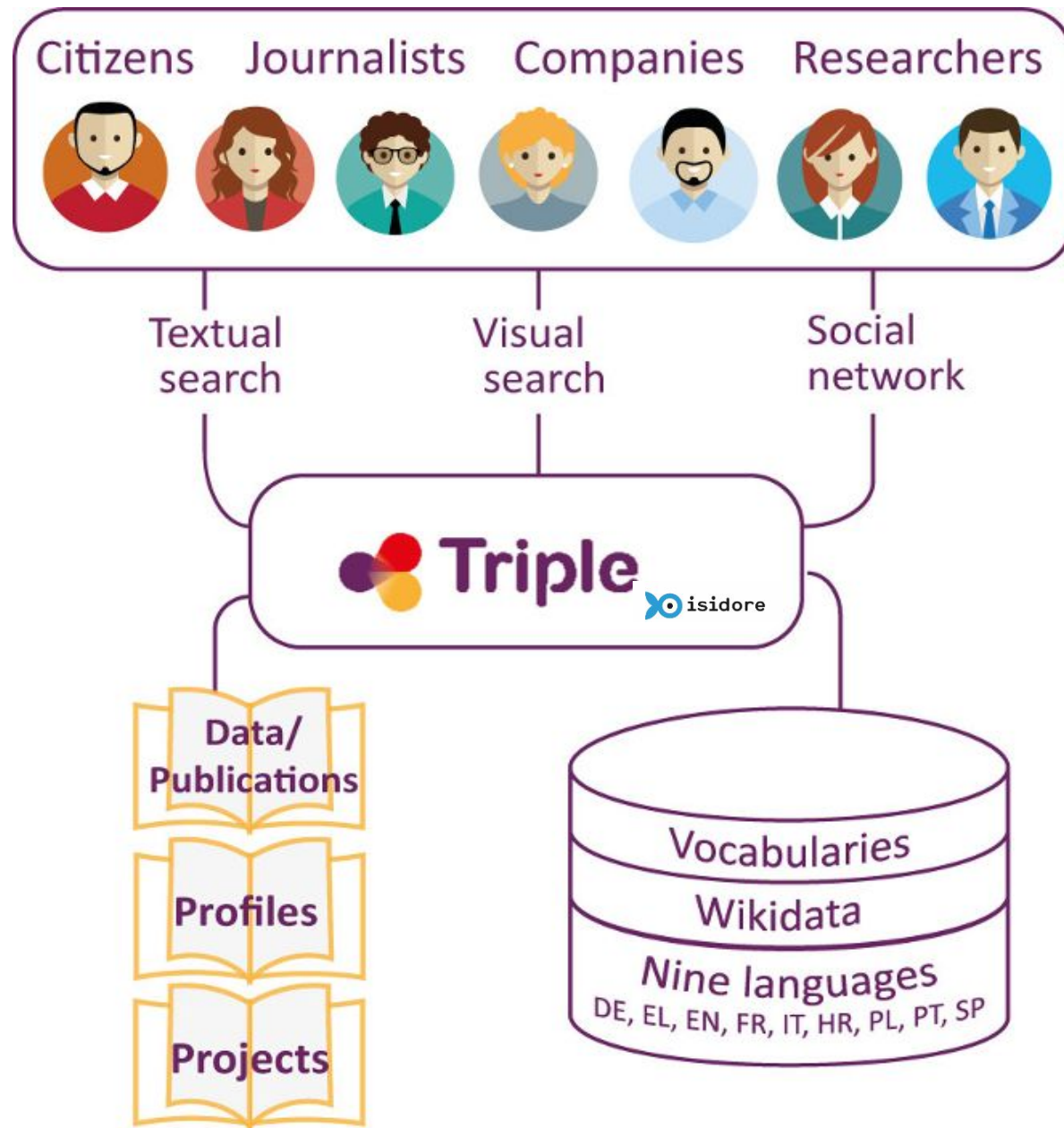


Triple

GOTRIPLE: Platform (contents, processes, services)

service of OPERAS RI

- open scholarly
communication in the social
sciences and humanities in
the European Research Area

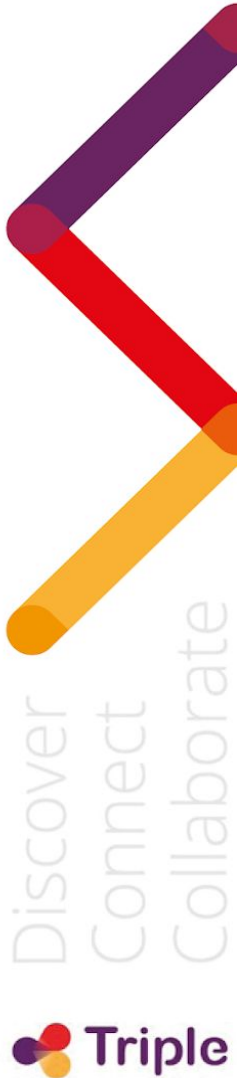


Discover
Connect
Collaborate

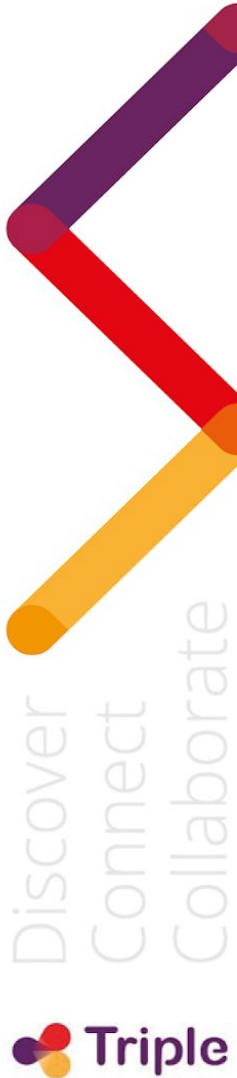
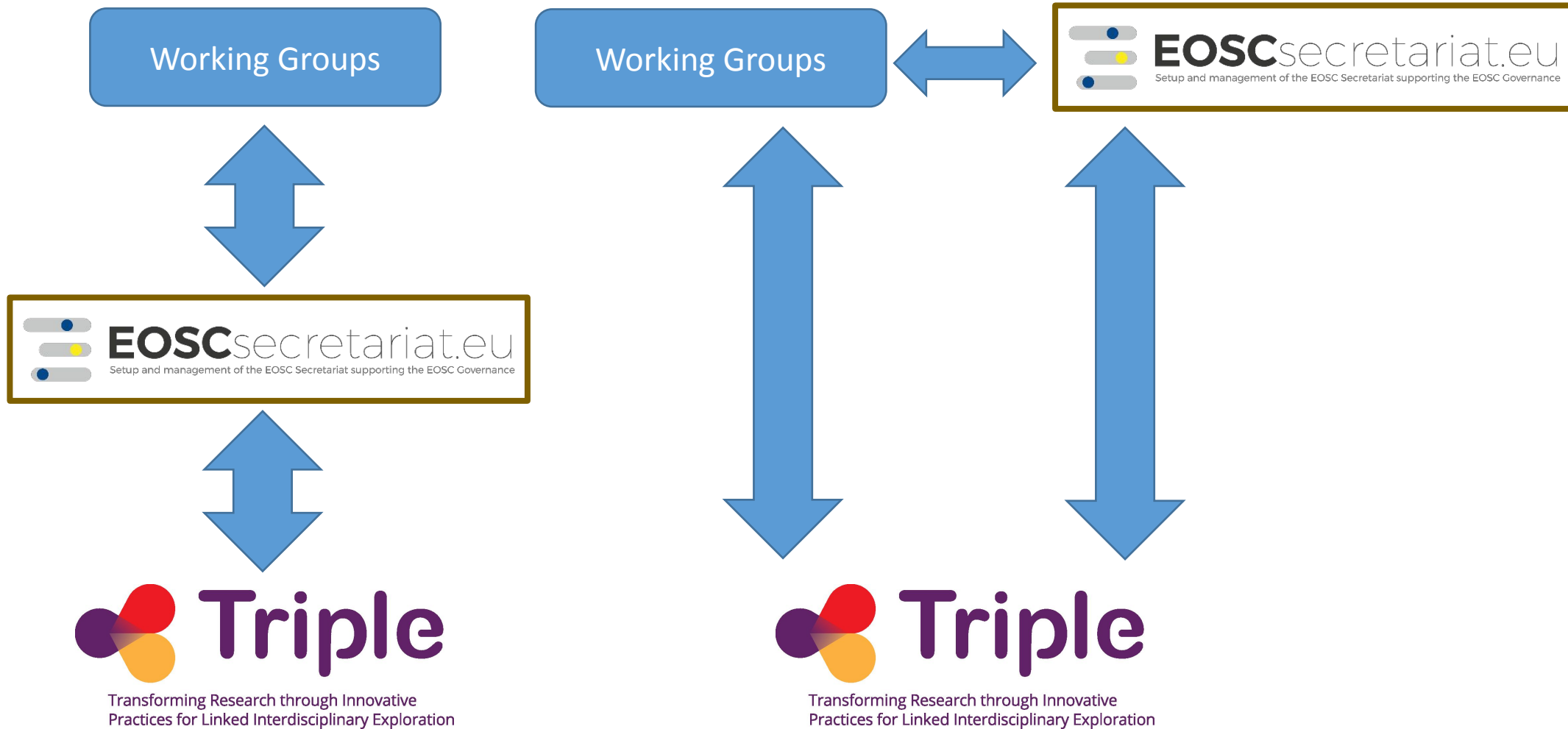


GOTRIIPLE platform: Key facts

- is the heart of the project and will be released as a prototype in autumn 2021;
- is an innovative **multilingual and multicultural discovery solution** for the social sciences and humanities (SSH);
- will provide a **single access point** that allows you to explore, find, access and reuse materials such as literature, data, projects and researcher profiles at European scale;
- is based on the **Isidore search engine** developed by Huma-Num (unit of CNRS)
- will be one of the dedicated **services of OPERAS**, the research infrastructure supporting open scholarly communication in the social sciences and humanities in the European Research Area.



TRIPLE and EOSC: How to collaborate



TRIPLE and the FAIR principles

Not only data: towards FAIR Digital Objects

Findability

- supported by the use of PIDs, either harvested from the providers' repositories or generated by the platform, for each searchable element; the PIDs will be registered in the metadata record.
- TRIPLE data model using schema.org
- automatic enrichments
- automatic linking to controlled vocabularies in several languages

Accessibility

- open protocols



TRIPLE and the FAIR principles

Interoperability

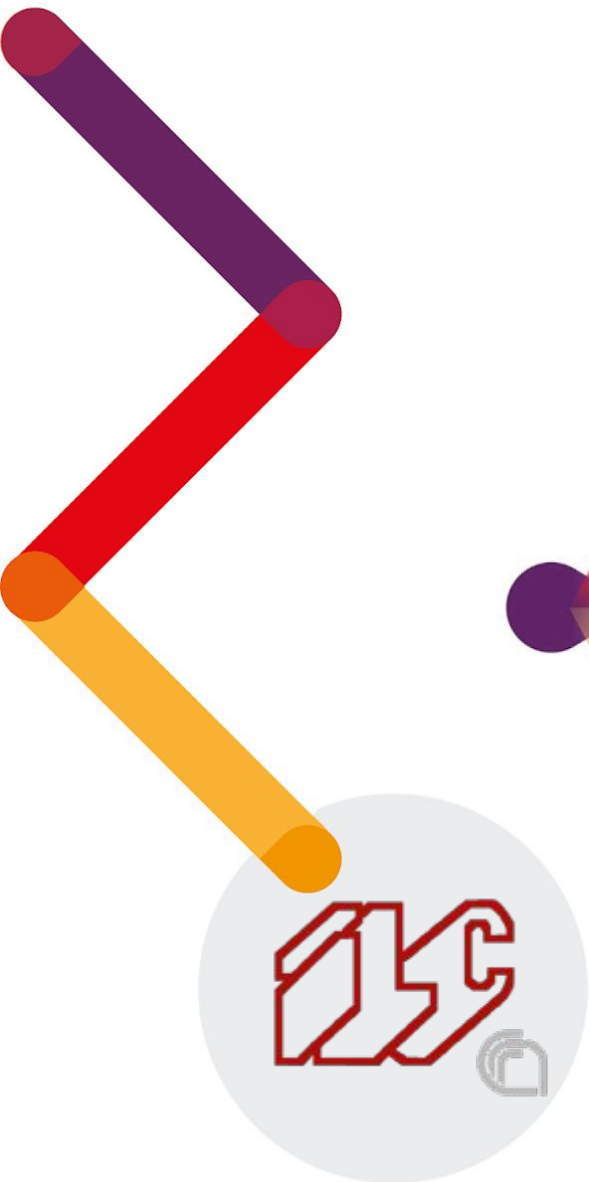
- tag variable-level information in the most relevant open standards for SSH
- Metadata records produced published using standard vocabularies
- Metadata records published in RDF will use the following linked open data vocabularies: Data Catalog Vocabulary (DCAT), Open Digital Rights Language (ODRL), DDI-RDF Discovery Vocabulary (Disco).
- use and manage a domain-relevant thesaurus

Reusability

- Open Access to all project results
- data and metadata (with the exclusion of the User Research Data) will be available in Open Access with open licenses allowing reuse.
- consistent licensing policy



Discover
Connect
Collaborate



Francesca Di Donato

francesca.didonato@ilc.cnr.it

*TRIPLE will be a dedicated
service of the OPERAS RI*

OPERAS
open access in the european research
area through scholarly communication



This project has received funding from the European Union's Horizon 2020 research and innovation programme under grant agreement number 863420

CC BY 4.0 International Licence 



www.gotriple.eu 

Follow us on:

