



A new species of *Mallinella* Strand, 1906 (Araneae, Zodariidae) from South China

Zimin Jiang[‡], Yanbin Yao[§], Yonghong Xiao[‡], Keke Liu[‡]

[‡] Jingtangshan University, Ji'an, China

[§] Jinshan College of Fujian Agriculture And Forestry University, Fuzhou, China

Corresponding author: Keke Liu (liukeke_1986@126.com)

Academic editor: Emma McCarroll Shaw

Received: 26 Apr 2023 | Accepted: 15 Jun 2023 | Published: 20 Jun 2023

Citation: Jiang Z, Yao Y, Xiao Y, Liu K (2023) A new species of *Mallinella* Strand, 1906 (Araneae, Zodariidae) from South China. Biodiversity Data Journal 11: e105513. <https://doi.org/10.3897/BDJ.11.e105513>

ZooBank: [urn:lsid:zoobank.org:pub:95BAED6B-A26C-4B66-B086-B59B2EE2FE7D](https://www.zoobank.org/pub:95BAED6B-A26C-4B66-B086-B59B2EE2FE7D)

Abstract

Background

Only one zodariid species, *Strenomorpha lushanensis* Yu & Chen, 2009 was found from Jiangxi Province. No other *Mallinella* species have been recorded from this Province.

New information

A new species, *Mallinella shahu* sp. n. is described from Jiangxi Province, China. Morphological illustrations, living photos and distribution map are given.

Keywords

Jiangxi Province, spider, taxonomy, zodariid species

Introduction

The spider family Zodariidae Thorell, 1881 is one of the most species-rich families recorded from the world (World Spider Catalog 2023). They usually live in leaf litter, woody debris, under stones or on the forest floor. Currently, there are 1264 species from 90 genera worldwide, with only 55 species belonging to eight genera being recorded from China. Most of them (55 species) are reported from the southern provinces of the country. At present, the genus *Mallinella* Strand, 1906 is the most diverse group in this family. According to the collecting information recorded on World Spider Catalog (2023), all of these *Mallinella* species are found from the southern provinces, such as Guangdong (one species), Guangxi (five species), Hainan (six species), Hunan (six species), Tibet (one species), Yunnan (four species), Guizhou (two species) and Zhejiang (one species). No species have been recorded from other provinces in this large country.

The genus *Mallinella* is characterised by the presence of a single row of ventral spines situated in front of the spinnerets, the palpal tibia with one or three apophyses, the conductor consisting of several parts, the embolic base connected to a tegulum via a thin membrane, the epigyne with a deep anterior median incision and the short and diverging copulatory ducts (Dankittipakul et al. 2012). More details, based on the sexual dimorphic characters of this genus, were not clearly revealed until Dankittipakul et al. published their work in 2012. Since then, species in the genus *Mallinella* started to be re-recognised by many surprising characters, such as chemosensitive hairs, proximal knob showing stridulating ridges, ordinary aculeate setae on femora I, chisel-shaped hairs on ventral part of tibia IV and the ventral spines in front of the spinnerets (Dankittipakul et al. 2012).

In the last three years, collections in Jiangxi Province in China led to the discovery of some new spider taxa, such as Agelenidae (Liu et al. 2021, Liu et al. 2020a), Corinnidae (Liu et al. 2022b), Phrurolithidae (Liu et al. 2020b, Liu et al. 2020c, Liu et al. 2021, Liu et al. 2022f), Salticidae (Liu et al. 2022a), Thomisidae (Liu et al. 2022c, Liu et al. 2022e, Li et al. 2022), Gnaphosidae (Liu et al. 2022d), Trachelidae (Zhang et al. 2022) and now Zodariidae (this study). These discoveries support the fact that this Province still has distributions of many unknown species because of the lack of systematic research and attention. When our team continued to study ground spiders from this Province, one undescribed and poorly-known species was found. The aims of the present paper are to provide detailed descriptions of this new species, based on specimens.

Materials and methods

Specimens were examined using a SZ6100 stereomicroscope. Both male and female copulatory organs were dissected and examined in 80% ethanol using an Olympus CX43 compound microscope with a KUY NICE CCD camera. Epigynes were cleared with pancreatin solution (Álvarez-Padilla and Hormiga 2007). Specimens, including dissected male palps and epigynes, were preserved in 75% ethanol after examination. Types are deposited in the Animal Specimen Museum, College of Life Science, Jinggangshan University (ASM-JGSU).

The measurements were taken using a stereomicroscope (AxioVision SE64 Rel. 4.8.3) and are given in millimetres. The body lengths of all specimens exclude the chelicerae and spinnerets. Terminology of the male and female genitalia follows Dankittipakul et al. (2012).

Leg measurements are given as total length (femur, patella, tibia, metatarsus, tarsus). The abbreviations used in the figures and text are as follows: ALE – anterior lateral eye, AME – anterior median eye, Con – conductor, d – dorsal, EB – embolic base, Em – embolus, Fe – femur, ID – insemination duct, LB – lateral border, MA – median apophysis, MOA – median ocular area, p – prolateral, Pa – patella, PLE – posterior lateral eye, PME – posterior median eye, r – retrolateral, RTA – retrolateral tibial apophysis, Spe – spermathecae, Ti – tibia, v – ventral.

Taxon treatment

Mallinella shahu Liu sp. nov.

- ZooBank [AEB57C1F-6F88-4600-9DDA-281C52EB0C23](https://www.zoobank.org/AEB57C1F-6F88-4600-9DDA-281C52EB0C23)

Materials

Holotype:

- scientificName: *Mallinella shahu* Liu, sp. n.; country: China; stateProvince: Jiangxi; locality: Ji'an City, Suichuan County, Nanfengmian National Nature Reserve, Daijiabu Station, Shahu Village, Fengshuao; verbatimElevation: 1071 m; verbatimCoordinates: 26°16'1.33"N, 114°3'47.53"E; georeferenceProtocol: GPS; samplingProtocol: sieving; eventDate: 28/06/2022; individualCount: 1; sex: male; lifeStage: adult; recordedBy: Liu Ke-Ke; occurrenceID: 274F2CC3-32F2-5C32-A2AF-64C4A00C6393

Paratypes:

- scientificName: *Mallinella shahu* Liu, sp. n.; country: China; stateProvince: Jiangxi; locality: Ji'an City, Suichuan County, Nanfengmian National Nature Reserve, Daijiabu Station, Shahu Village, Fengshuao; verbatimElevation: 1071 m; verbatimCoordinates: 26°16'1.33"N, 114°3'47.53"E; georeferenceProtocol: GPS; samplingProtocol: sieving; eventDate: 06/28/2022; individualCount: 2; sex: male; lifeStage: adult; recordedBy: Liu Ke-Ke; occurrenceID: C9EC17EF-2286-5789-8809-B252BE1F4282
- scientificName: *Mallinella shahu* Liu, sp. n.; country: China; stateProvince: Jiangxi; locality: Ji'an City, Suichuan County, Nanfengmian National Nature Reserve, Daijiabu Station, Shahu Village, Fengshuao; verbatimElevation: 1071 m; verbatimCoordinates: 26°16'1.33"N, 114°3'47.53"E; georeferenceProtocol: GPS; samplingProtocol: sieving; eventDate: 06/28/2022; individualCount: 1; sex: female; lifeStage: adult; recordedBy: Liu Ke-Ke; occurrenceID: BAD600A6-1B24-5046-AC38-770954C8CE03
- scientificName: *Mallinella shahu* Liu, sp. n.; country: China; stateProvince: Jiangxi; locality: Ji'an City, Suichuan County, Nanfengmian National Nature Reserve, Dafen Station, Gaoxing Village, Shiziao; verbatimElevation: 913 m; verbatimCoordinates: 26°20'28.85"N, 114°5'27.47"E; georeferenceProtocol: GPS; samplingProtocol: sieving; eventDate: 06/27/2022; individualCount: 1; sex: female; lifeStage: adult; recordedBy: Liu Ke-Ke; occurrenceID: 1C8D4BC5-8CB6-5BDA-B3FC-746C9F4C5FA9
- scientificName: *Mallinella shahu* Liu, sp. n.; country: China; stateProvince: Jiangxi; locality: Ji'an City, Suichuan County, Nanfengmian National Nature Reserve,

- DaijiabuStation, Shahu Village, Qingkenglong Hydropower Station; verbatimElevation: 1123 m; verbatimCoordinates: 26°15'26.42"N, 114°2'39.96"E; georeferenceProtocol: GPS; samplingProtocol: sieving; eventDate: 06/28/2022; individualCount: 1; sex: male; lifeStage: adult; recordedBy: Liu Ke-Ke; occurrenceID: EB963720-873E-5D8C-B26B-A0BA01CAED6C
- e. scientificName: *Mallinella shahu* Liu, sp. n.; country: China; stateProvince: Jiangxi; locality: Ji'an City, Suichuan County, Nanfengmian National Nature Reserve, DaijiabuStation, Qianmo Village, Daotou; verbatimElevation: 852 m; verbatimCoordinates: 26°17'17.10"N, 114°5'24.67"E; georeferenceProtocol: GPS; samplingProtocol: sieving; eventDate: 06/28/2022; individualCount: 1; sex: male; lifeStage: adult; recordedBy: Liu Ke-Ke; occurrenceID: D1AE8B9F-4858-5386-9879-D9795C110395
- f. scientificName: *Mallinella shahu* Liu, sp. n.; country: China; stateProvince: Jiangxi; locality: Ji'an City, Suichuan County, Nanfengmian National Nature Reserve, DaijiabuStation, Qiaoshui Village; verbatimElevation: 542 m; verbatimCoordinates: 26°16'18.00"N, 114°5'40.99"E; georeferenceProtocol: GPS; samplingProtocol: sieving; eventDate: 06/28/2022; individualCount: 1; sex: male; lifeStage: adult; recordedBy: Liu Ke-Ke; occurrenceID: 3ED8AF9D-0331-5684-94EC-3B642839BC70
- g. scientificName: *Mallinella shahu* Liu, sp. n.; country: China; stateProvince: Jiangxi; locality: Ji'an City, Anfu County, Taishan Township, Yangshimu, Yeniu waterfall; verbatimElevation: 541 m; verbatimCoordinates: 27°31'39.69"N, 114°14'37.18"E; georeferenceProtocol: GPS; samplingProtocol: sieving; eventDate: 05/04/2021; individualCount: 1; sex: male; lifeStage: adult; recordedBy: Liu Ke-Ke; occurrenceID: DCA90A31-DF46-57AC-93D7-3D71076495F7
- h. scientificName: *Mallinella shahu* Liu, sp. n.; country: China; stateProvince: Jiangxi; locality: Ji'an City, Anfu County, Taishan Township, Yangshimu, Yeniu waterfall; verbatimElevation: 542 m; verbatimCoordinates: 27°31'39.69"N, 114°14'37.18"E; georeferenceProtocol: GPS; samplingProtocol: sieving; eventDate: 05/04/2021; individualCount: 1; sex: female; lifeStage: adult; recordedBy: Liu Ke-Ke; occurrenceID: F40FC25B-74A1-530D-B6F7-4A2EBFB51844
- i. scientificName: *Mallinella shahu* Liu, sp. n.; country: China; stateProvince: Jiangxi; locality: Ji'an City, Taihe County, Ziyao Mountain; verbatimElevation: 228 m; verbatimCoordinates: 26°43'5.30"N, 115°13'36.28"E; georeferenceProtocol: GPS; samplingProtocol: sieving; eventDate: 10/28/2020; individualCount: 1; sex: female; lifeStage: adult; recordedBy: Liu Ke-Ke; occurrenceID: 264C84C3-35D3-570A-9934-3E7B92AC212D
- j. scientificName: *Mallinella shahu* Liu, sp. n.; country: China; stateProvince: Jiangxi; locality: Ji'an City, Taihe County, Ziyao Mountain; verbatimElevation: 338 m; verbatimCoordinates: 26°43'23.15"N, 115°13'31.70"E; georeferenceProtocol: GPS; samplingProtocol: sieving; eventDate: 10/28/2020; individualCount: 2; sex: female; lifeStage: adult; recordedBy: Liu Ke-Ke; occurrenceID: FA34B060-29E9-5877-B43E-11A55BF3319E
- k. scientificName: *Mallinella shahu* Liu, sp. n.; country: China; stateProvince: Jiangxi; locality: Ji'an City, Suichuan County, Bizhou Town, Baishuixian, Dakeng Formation; verbatimElevation: 329 m; verbatimCoordinates: 26°19'58.83"N, 114°44'00.01"E; georeferenceProtocol: GPS; samplingProtocol: sieving; eventDate: 10/04/2019; individualCount: 1; sex: female; lifeStage: adult; recordedBy: Liu Ke-Ke; occurrenceID: C398B321-68C0-57CA-97CD-50457BB68BC9
- l. scientificName: *Mallinella shahu* Liu, sp. n.; country: China; stateProvince: Jiangxi; locality: Ji'an City, Jinggangshan City, Fuxi Village, Xiaoxi Forest Farm;

- verbatimElevation: 621 m; verbatimCoordinates: 26°29'32.24"N, 114°10'53.02"E; georeferenceProtocol: GPS; samplingProtocol: sieving; eventDate: 11/14/2020; individualCount: 1; sex: female; lifeStage: adult; recordedBy: Liu Ke-Ke; occurrenceID: EC481306-7D07-5ABB-A9E1-51215F797408
- m. scientificName: *Mallinella shahu* Liu, sp. n.; country: China; stateProvince: Jiangxi; locality: Ji'an City, Jinggangshan City, Fuxi Village, Xiaoxi Forest Farm; verbatimElevation: 413 m; verbatimCoordinates: 26°28'22.92"N, 114°11'53.07"E; georeferenceProtocol: GPS; samplingProtocol: sieving; eventDate: 11/14/2020; individualCount: 1; sex: male; lifeStage: adult; recordedBy: Liu Ke-Ke; occurrenceID: 56FD8CE0-EB31-5333-8E08-76808C7B3C7A
- n. scientificName: *Mallinella shahu* Liu, sp. n.; country: China; stateProvince: Jiangxi; locality: Ji'an City, Jinggangshan City, Dalong Town, Yuantou Village; verbatimElevation: 550 m; verbatimCoordinates: 26°36'57.54"N, 114°5'21.08"E; georeferenceProtocol: GPS; samplingProtocol: sieving; eventDate: 10/02/2019; individualCount: 2; sex: female; lifeStage: adult; recordedBy: Liu Ke-Ke; occurrenceID: 0ABD40E8-A65E-570C-857E-EB6E613760C5
- o. scientificName: *Mallinella shahu* Liu, sp. n.; country: China; stateProvince: Jiangxi; locality: Ji'an City, Taihe County, Yuanqian Town, Zhonglong Township, Ziyao Mountain; verbatimElevation: 394 m; verbatimCoordinates: 26°43'22.89"N, 115°13'31.78"E; georeferenceProtocol: GPS; samplingProtocol: sieving; eventDate: 05/02/2021; individualCount: 2; sex: female; lifeStage: adult; recordedBy: Liu Ke-Ke; occurrenceID: D706C210-AEA2-5CD8-A771-742480C4582A
- p. scientificName: *Mallinella shahu* Liu, sp. n.; country: China; stateProvince: Jiangxi; locality: Ganzhou City, Dayu County, Nan'an Town, Shirenkeng, Daya Mountain Scenic Area; verbatimElevation: 459 m; verbatimCoordinates: 25°26'40.76"N, 114°21'00.21"E; georeferenceProtocol: GPS; samplingProtocol: sieving; eventDate: 10/03/2020; individualCount: 1; sex: male; lifeStage: adult; recordedBy: Liu Ke-Ke; occurrenceID: 8C5E8ED7-D31A-511C-A914-EC047BACE518
- q. scientificName: *Mallinella shahu* Liu, sp. n.; country: China; stateProvince: Jiangxi; locality: Ji'an City, Taihe County, Laoyingpan Tunnel; verbatimElevation: 311 m; verbatimCoordinates: 26°34'32.34"N, 115°09'26.25"E; georeferenceProtocol: GPS; samplingProtocol: sieving; eventDate: 11/05/2022; individualCount: 1; sex: female; lifeStage: adult; recordedBy: Liu Ke-Ke; occurrenceID: 97C46CD4-0297-542E-9277-75B867EDC491
- r. scientificName: *Mallinella shahu* Liu, sp. n.; country: China; stateProvince: Jiangxi; locality: Ganzhou City, Ningdu County, Cuiweifeng, Jinjing Cave; verbatimElevation: 346 m; verbatimCoordinates: 26°30'41.64"N, 115°59'19.02"E; georeferenceProtocol: GPS; samplingProtocol: sieving; eventDate: 01/23/2021; individualCount: 1; sex: female; lifeStage: adult; recordedBy: Liu Ke-Ke; occurrenceID: B6C25F65-F2EF-54C4-BC9C-7AF8D7020827

Description

Male (holotype) (Figs 1, 3A–D and Fig. 4A, B). Total length 5.35 mm.

Carapace (Fig. 1A, C) 2.91 mm long, 2.15 mm wide, anteriorly narrowed to half of its maximum width, with abundant short setae. Eye sizes and interdistances: AER and PER procurved in dorsal view; AME 0.13, ALE 0.14, PME 0.13, PLE 0.16, AME–AME 0.08, AME–ALE 0.19, PME–PME 0.12, PME–PLE 0.32, AME–PME 0.21, AME–PLE 0.28, ALE–ALE 0.64, PLE–PLE 0.91, ALE–PLE 0.06; MOA 0.43 long, front width 0.35,

back width 0.39. Chelicerae without promarginal and retromarginal teeth. Endites triangular, longer than wide, anteriorly convergent, with dense brush hairs anterolaterally. Labium triangular, wider than long. Sternum strongly sclerotised, as long as wide, anteromedially with a wide notch, laterally with sclerotised serration-shaped margin, posterior end blunt. Legs (Fig. 1A, B): measurements: I 7.56 (1.97, 0.67, 1.78, 1.9, 1.24); II 5.95 (1.91, 0.71, 1.54, 1.79); III 7.04 (1.77, 0.76, 1.51, 1.92, 1.08); IV 8.61 (2.22, 0.84, 2.07, 2.5, 0.98); spination: I Fe: d3, p1; Ti: p1, v6; Mt: v7; II Fe: d3, p1; Pa: p1; Ti: p2, v7; Mt: v6; III Fe: d3, p3, r1; Pa: p1; Ti: d2, p2, r2, v6; Mt: d1, p3, r2, v8; IV: Fe: d4, p3, r1; Pa: p1; Ti: d1, p3, r3, v6; Mt: d1, p3, r4, v8. Pedicel (Fig. 1A, B) 0.15 mm long, cylindrical, sclerotised. Abdomen (Fig. 1A, B) 2.29 mm long, 1.83 mm wide, scutum covering less than half of dorsum; venter with a weakly sclerotised epigastric region anteriorly, two pairs of patches medially and a single row of ventral spines situated in front of the spinnerets.

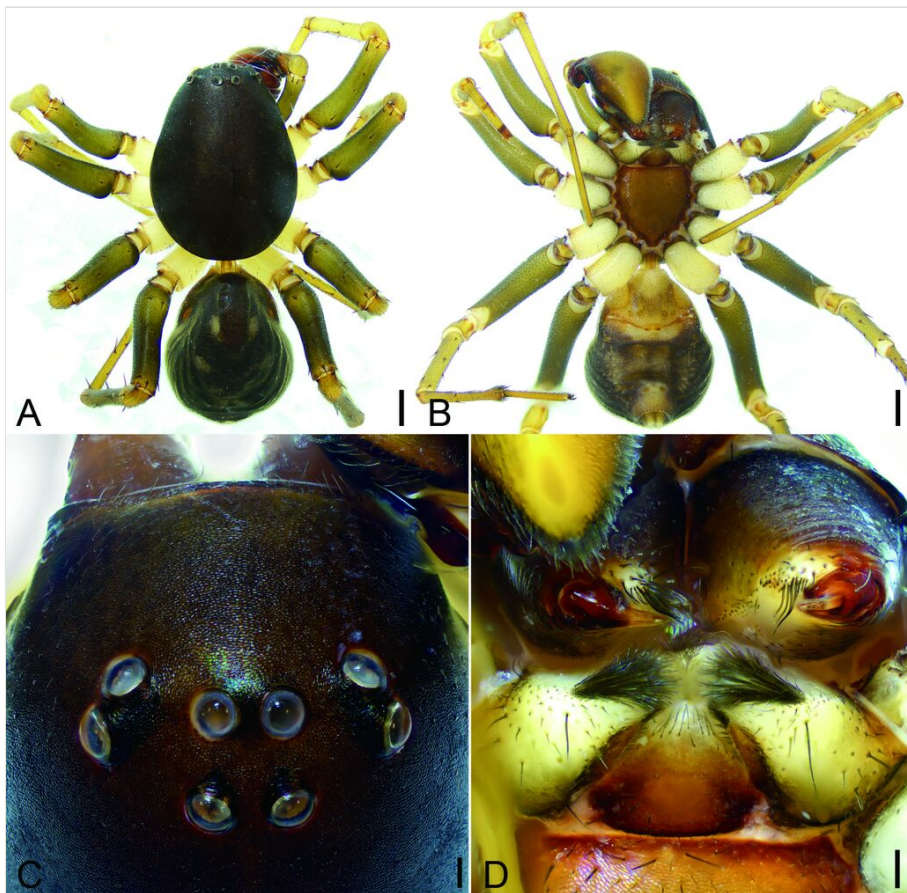


Figure 1. [doi](#)

Mallinella shahu sp. n., male holotype. **A** habitus, dorsal view; **B** same, ventral view; **C** eyes, dorsal view; **D** chelicerae and endites, ventral view. Scale bars: 0.5 mm (**A**, **B**); 0.1 mm (**C**, **D**).

Colouration (Fig. 1). Carapace black. Chelicerae brown to black. Endites yellow to brown. Labium and sternum reddish-brown. Legs yellow to light brown, femora darker than other leg segments. Pedicel dark yellow. Abdomen chestnut-brown, with four pairs of yellowish oval marks; venter yellow to brown, laterally with many small yellow patches.

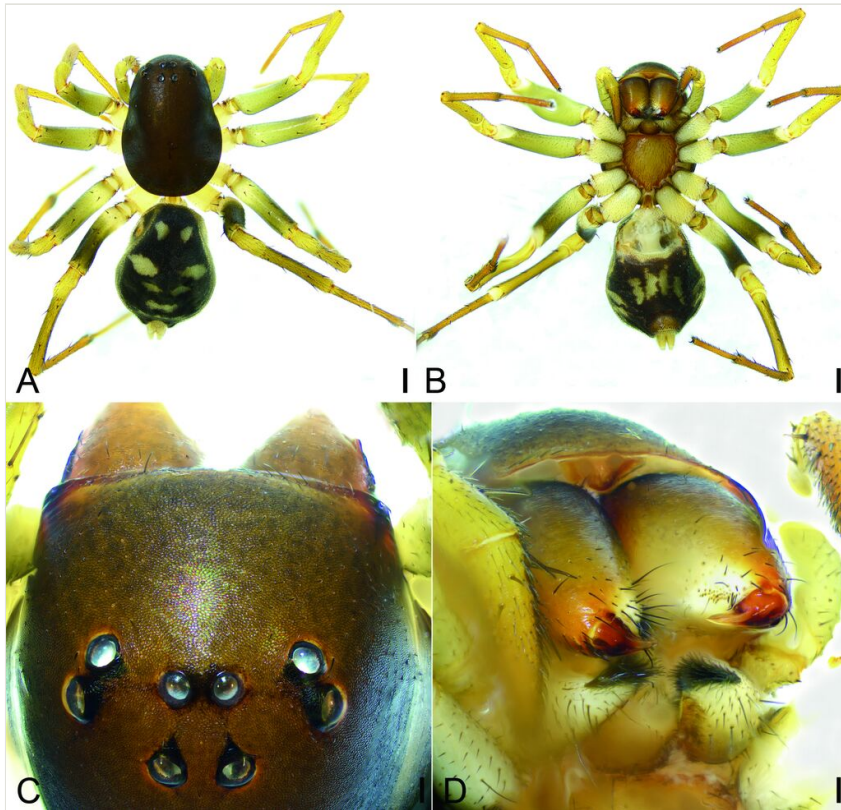


Figure 2. [doi](#)

Mallinella shahu sp. n., female paratype. **A** habitus, dorsal view; **B** same, ventral view; **C** eyes, dorsal view; **D** chelicerae, ventral view. Scale bars: 0.5 mm (**A**, **B**); 0.1 mm (**C**, **D**).

Palp (Fig. 3A–D). Cymbium fold broad, strongly sclerotised, occupying slightly less than half cymbial length. Retrolateral tibial apophysis (RTA) digitiform, apex terminally bluntly pointed. Apical ridge strongly sclerotised on ventral side of palpal tibia. Median apophysis (MA) strongly curved forward on ventrolateral view. Conductor (Con) thick, tooth-like. Embolic base (EB) strongly curved laterally, embolus (Em) flattened, branching submedially; mesal ramus distinctly longer, relatively broad, terminally blunt, with two tooth-like apophyses subapically; lateral ramus relatively narrowed.

Female (Figs 2, 3E–H and Fig. 4C, D). As in male, except as noted. Total length 5.89 mm, carapace 3.05 mm long, 2.11 mm wide. Eye sizes and interdistances: AME 0.11, ALE 0.13, PME 0.12, PLE 0.14, AME–AME 0.1, AME–ALE 0.22, PME–PME 0.16,

PME–PLE 0.33, AME–PME 0.25, AME–PLE 0.37, ALE–ALE 0.74, PLE–PLE 1, ALE–PLE 0.1. MOA 0.48 long, front width 0.31, back width 0.41. Leg measurements: I 6.77 (1.67, 0.72, 1.57, 1.5, 1.31); II 6.53 (1.82, 0.69, 1.33, 1.47, 1.22); III 6.88 (1.76, 0.78, 1.37, 1.83, 1.14); IV 8.77 (2.08, 0.8, 1.85, 2.56, 1.48); spination: I Fe: d3, p1; Ti: p1, v6; Mt: p1, v5; II Fe: d3, p1; Pa: p1; Ti: p2, v6; Mt: p2, v6; III Fe: d3, p3, r1; Pa: p1; Ti: d2, p2, r2, v5; Mt: d1, p3, r2, v7; IV: Fe: d4, p3, r1; Pa: p1; Ti: d2, p2, r2, v4; Mt: p5, r2, v5. Pedicel 0.09 mm long. Abdomen (Fig. 2A, B) 2.76 long, 2.15 wide, without scutum and ventral sclerite.

Colouration as in Fig. 2A, B. Abdomen paler than that of the male.

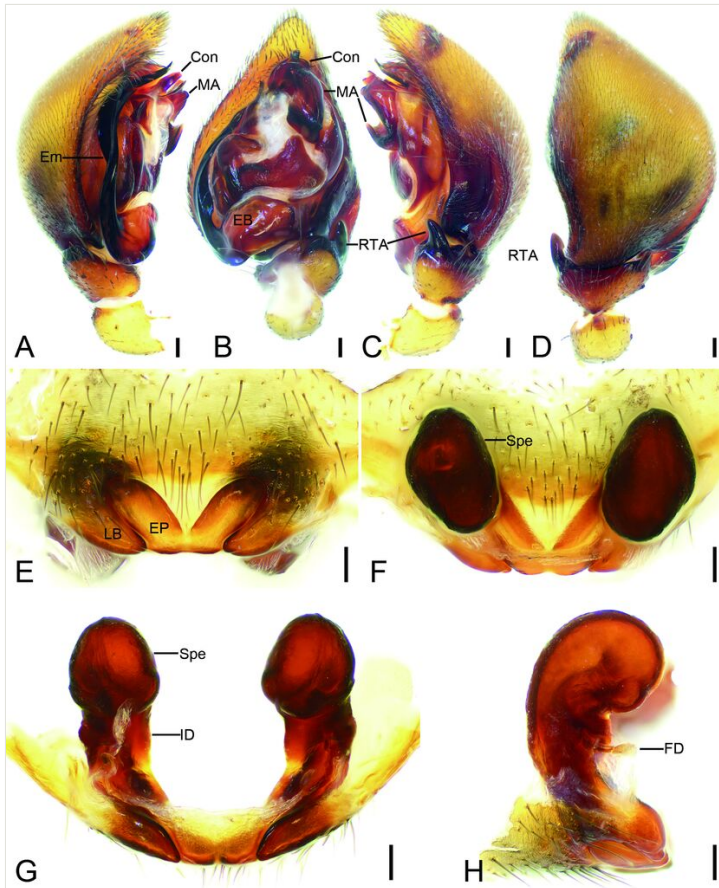


Figure 3. [doi](#)

Mallinella shahu sp. n., male palp of holotype and female epigyne of paratype. **A** palp, retrolateral view; **B** same, ventral view; **C** same, retrolateral view; **D** same, dorsal view; **E** epigyne, ventral view; **F** same, retrolateral view; **G** same, posterior view; **H** same, lateral view. Abbreviations: Con – conductor, EB – embolic base, Em – embolus, FD – fertilisation duct, ID – insemination duct, LB – lateral border, MA – median apophysis, RTA – retrolateral tibial apophysis, Spe – spermathecae. Scale bars: 0.1 mm.

Epigyne (Fig. 3E–H). Epigynal plate (EP) broad V-shaped, median incision deep, almost reaching posterior margin. Lateral border (LB) along the lateral margin of epigynal plate heart-shaped. Insemination ducts (ID) pedicel-like, separated by their length, slightly parallel. Spermathecae (Spe) oval in dorsal view, ear-shaped in lateral view. Fertilisation ducts (FD) relative thin, as long as the width of insemination ducts.

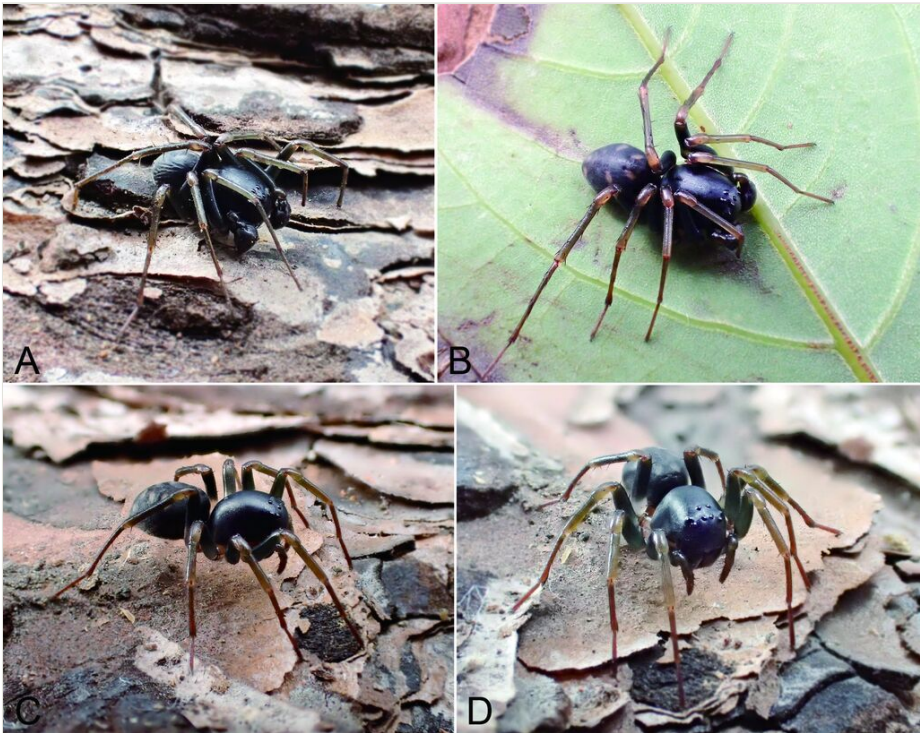


Figure 4. [doi](#)

Mallinella shahu sp. n., living specimen. A & B male; C & D female.

Diagnosis

The male of this new species is similar to that of *Mallinella pseudokunmingensis* Yu & Zhang, 2019 (Yu and Zhang (2019): 4, figs. 1, 4, 6–18) in having a strong digitiform retrolateral tibial apophysis and the flattened embolus, but can be distinguished from it by the abdomen with four pairs of small yellowish marks (vs. four pairs of large yellowish marks) (cf. Fig. 1A; Yu and Zhang (2019): 4, fig. 1), the conductor with the blunt apex (vs. spine-like) (cf. Fig. 3A; Yu and Zhang 2019: 4, fig. 6), the thick median apophysis covering less than half of tegulum (vs. thin, more than or nearly half of tegulum) (cf. Fig. 3A–C; Yu and Zhang (2019) 2019: 4, fig. 7). The female of the new species resembles *M. pseudokunmingensis* (Yu and Zhang (2019): 4, figs. 2, 3, 5, 6, 19–23) in having the lateral border forming a heart-shaped structure and the oval spermathecae, but it can be easily distinguished by the anterior three pairs of

separated small marks (vs. touching large marks) (cf. Fig. 2A; Yu and Zhang (2019): 4, fig. 2) and the W-shaped epigynal plate (vs. V-shaped) (cf. Fig. 3E; Yu and Zhang (2019): 4, figs. 19, 20) and the erect insemination duct (vs. slanting) (cf. Fig. 3G; Yu and Zhang (2019): 4, fig. 22).

Etymology

The species name is derived from the name of the type locality; noun in apposition.

Distribution

Known from Ji'an and Ganzhou cities in Jiangxi Province, China (Fig. 5). It seems that this species has a wide distribution in this Province based on recent fieldwork.

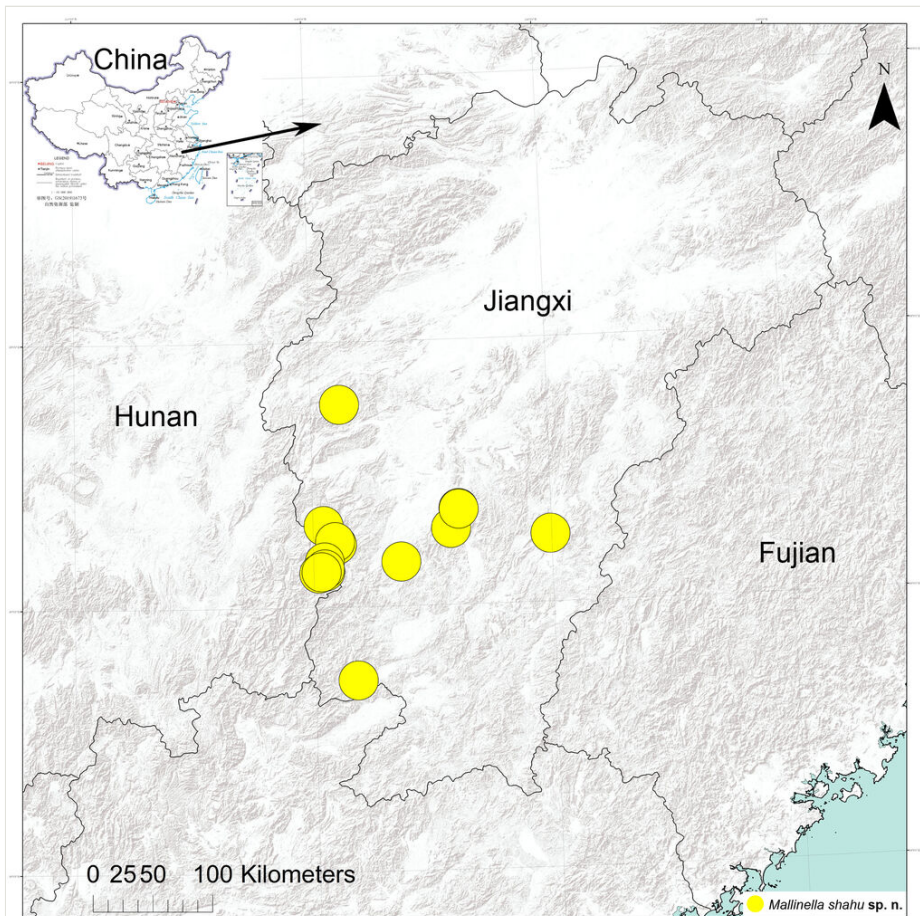


Figure 5. [doi](#)

Records of *Mallinella shahu* sp. n., from Jiangxi Province, China.

Ecology

It was collected from leaf litter in areas of broad-leaved forests in hilly areas.

Discussion

The genus *Mallinella* is divided into 22 species-groups by Dankittipakul et al. (2012), based on morphological characters; 202 species later, it becomes the most species-rich group in the family Zodariidae. According to their localities, they are mainly distributed in Africa, the Indian subcontinent, Indo-Burma, Sundaland, Wallacea and Polynesia-Micronesia (Dankittipakul et al. 2012). Only 26 species (including the new species) have been reported from China (WSC 2023). The main reasons are that this group has not received much attention in China and that many *Mallinella* species are difficult to distinguish from their closely-related species, especially the females.

Acknowledgements

We thank Danchen Zhao, Zeyuan Meng, Zixi He, Siliang Yuan, Keqiang Huang, Huipu Luo, Minghui Fei, Jing Yan, Xin Zeng, Mengzhen Zhang, Congzheng Li, Yuanhao Ying, Cheng Xu, Qixin Xiao, Jing Yan and Ning Ma (all from Jिंगgangshan University) for their assistance during the fieldwork. We also thank Nathalie Yonow for improving the English of the manuscript. This study was supported by the Natural Science Foundation of China (32000301, 32160243) and the Science and Technology Innovation Project for College Students.

Author contributions

Zimin Jiang, Yonghong Xiao and Keke Liu designed the study. Zimin Jiang and Yanbin Yao identified this species. Zimin Jiang drafted the MS and provided the images.

References

- Álvarez-Padilla F, Hormiga G (2007) A protocol for digesting internal soft tissues and mounting spiders for scanning electron microscopy. *Journal of Arachnology* 35 (3): 538-542. <https://doi.org/10.1636/sh06-55.1>
- Dankittipakul P, Jocqué R, Singtripop T (2012) Systematics and biogeography of the spider genus *Mallinella* Strand, 1906, with descriptions of new species and new genera from Southeast Asia (Araneae, Zodariidae). *Zootaxa* 3369 (1): 1-327. <https://doi.org/10.11646/zootaxa.3369.1.1>
- Liu J, Xiao Y, Zhang M, Xu X, Liu K (2021) Four new coelotine species (Araneae, Agelenidae, Coelotinae) from South China, with the first description of the male of *Coelotes septus* Wang, Yin, Peng & Xie, 1990. *ZooKeys* 1029: 93-112. <https://doi.org/10.3897/zookeys.1029.63060>

- Liu K, Luo H, Xu X, Chen Z, Xiao Y (2020a) Description of two new species of *Tonsilla* Wang & Yin, 1992 with an updated key to species (Araneae, Agelenidae). ZooKeys 944: 31-46. <https://doi.org/10.3897/zookeys.944.48575>
- Liu K, Ying Y, Xiao Y, Yan J, Xiao Y (2020b) Eight new species of *Otacilia* (Araneae: Phrurolithidae) from southern China. ZooKeys 979: 1-33. <https://doi.org/10.3897/zookeys.979.56273>
- Liu K, Luo H, Ying Y, Xiao Y, Xu X, Xiao Y (2020c) A survey of Phrurolithidae spiders from Jinggang Mountain National Nature Reserve, Jiangxi Province, China. ZooKeys 947: 1-37. <https://doi.org/10.3897/zookeys.947.51175>
- Liu K, Ying Y, Xiao Y, Yan J, Zhang M, Xiao Y (2021) A new species of the genus *Otacilia* Thorell, 1897 (Araneae: Phrurolithidae) from Southern China. Pakistan Journal of Zoology 53 (3): 801-807. <https://doi.org/10.17582/journal.pjz/20200705050725>
- Liu K, Zhao Z, Xiao Y, Peng X (2022a) Five new species of *Synagelides* Strand, 1906 from China (Araneae, Salticidae). ZooKeys 1102: 59-82. <https://doi.org/10.3897/zookeys.1102.76800>
- Liu K, Jiang Z, Ma N, Li W, Xiao Y (2022b) Description of two new species of the genus *Spinirta* Jin & Zhang, 2020 (Araneae, Corinnidae) from southern China. ZooKeys 1136: 57-69. <https://doi.org/10.3897/zookeys.1136.94374>
- Liu K, Li W, Yao Y, Li C, Li S (2022c) The first record of the thomisid genus *Ibana* Benjamin, 2014 (Araneae, Thomisidae) from China, with the description of a new species. Biodiversity Data Journal 10 (e93637): 1-9. <https://doi.org/10.3897/bdj.10.e93637>
- Liu K, Yan J, Xiao Q, Luo C, Xiao Y, Fomichev A (2022d) Ground spiders (Araneae, Gnaphosidae) from Jiangxi Province, China. ZooKeys 1108: 189-207. <https://doi.org/10.3897/zookeys.1108.85655>
- Liu K, Ying Y, Fomichev A, Zhao D, Li W, Xiao Y, Xu X (2022e) Crab spiders (Araneae, Thomisidae) of Jinggang Mountain National Nature Reserve, Jiangxi Province, China. ZooKeys 1095: 43-74. <https://doi.org/10.3897/zookeys.1095.72829>
- Liu K, Li S, Zhang X, Ying Y, Meng Z, Fei M, Li W, Xiao Y, Xu X (2022f) Unknown species from China: The case of phrurolithid spiders (Araneae, Phrurolithidae). Zoological Research 43 (3): 352-355, Suppl. I: 1-5, Suppl. II: 1-223.. <https://doi.org/10.24272/j.issn.2095-8137.2022.055>
- Li W, Li C, Yao Y, Liu K, Liao X (2022) A new species of *Lysiteles* Simon, 1895 (Araneae, Thomisidae) from South China. Biodiversity Data Journal 10 <https://doi.org/10.3897/bdj.10.e95981>
- World Spider Catalog (2023) World Spider Catalog. Version 24. Natural History Museum Bern. <https://wsc.nmbe.ch/>. Accessed on: 2013-4-07.
- Yu H, Zhang J (2019) A new species of *Mallinella* Strand, 1906 (Araneae: Zodariidae) from Guizhou Province, China. Acta Zoologica Bulgarica 71 (1): 3-8.
- Zhang M, Ma N, Jiang Z, Xiao Y, Liu K (2022) A new species of *Orthobula* Simon, 1897 (Araneae, Trachelidae) from South China. Biodiversity Data Journal 10 (e94202): 1-11. <https://doi.org/10.3897/bdj.10.e94202>