

## Problem: Challenges of Traditional Historiography Research

- **Challenge of narrative texts.** The world of (or rather *in*) a literary work is constructed *linguistically*. This applies to literary characters – but inevitably also to “real-life” protagonists insofar as they are literary characters. A reality within the literary world is not “real” in the general sense: once committed to the realm of the literary, it becomes a quasi-reality (Ingarden).
- **Accessibility of textual sources.** Ever since the first word, or perhaps even a pictogram, was written, someone may have wondered: what was meant by that? Countless analyses of Homer’s monumental epics and hymns show that textual subtleties have the capacity not only to amaze but also to confound. Since ancient times, questions have been raised (Aristotle, Poetics 1451b) as to whether the narrative text – a tool “adapted” to epic poems and mythological narratives – is a suitable vessel for historiographical treatises. From Plato’s “proto-narratological” insights and Aristotle’s skepticism about historiography to the modern coinage of the term *non-narrative history* the same thing has been observed: texts are tricky.
- **Doubts about knowledge exchange.** Some of the world’s leading post-modern theorists (Derrida) expressed doubt in the possibility that texts can convey *anything* to readers – much less any real knowledge.

## Example: The case of Pier Paolo Vergerio



- three sets of biographies
- little overlap
- very different focuses



TRECCANI

Deutsche Biographie



Slovenian Academy of Sciences & Arts

## Open Challenges in Traditional Biographical Research

### Novel Approaches to Biographical Research in InTaVia

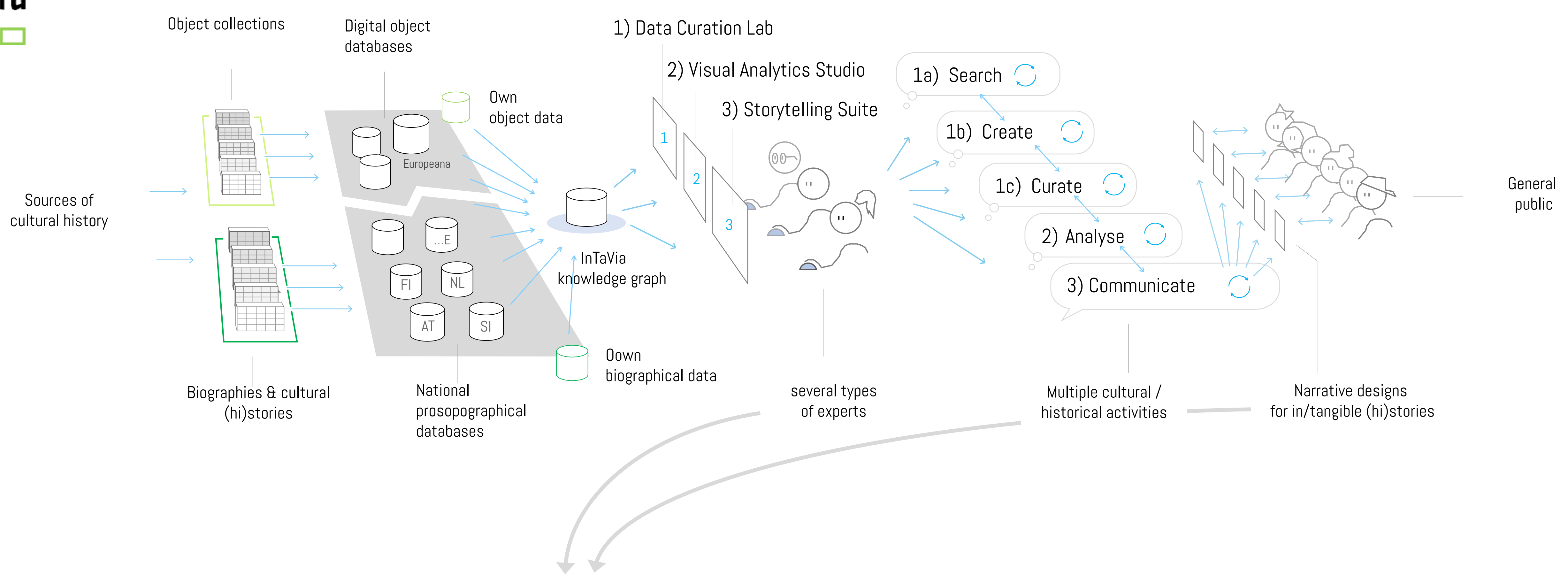
Gregor Pobezin

## Aim: The InTaVia Platform

*InTaVia aims for an interoperable system that supports the work of CH experts with in/tangible data across Europe.*

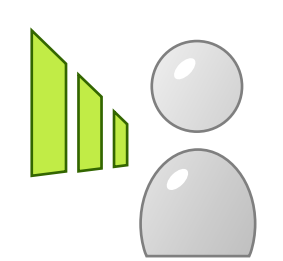
It focuses on data integration, curation, creation, as well as visual analysis and communication, while critically reflecting sources, data, and methods. This will be achieved by:

- an **integrated data model** for object data and biographical data
- advanced **NLP models** for linguistic analysis of textual data in multiple languages from different time periods.
- **visualizations** to provide multiple views on cultural objects and actors over time.

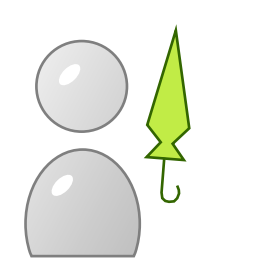


## Target Group:

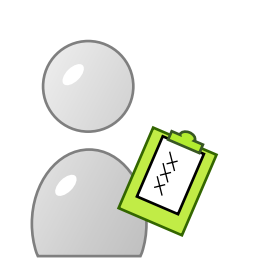
A complex, heterogeneous audience, represented by 10 Personas



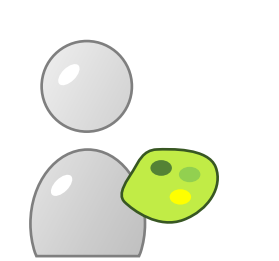
Emilia Curator



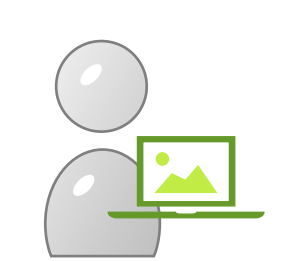
Noah Tourist Guide



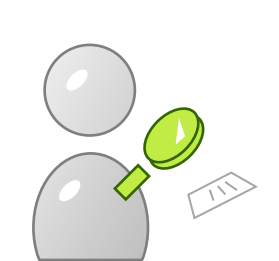
Anne Collection Manager



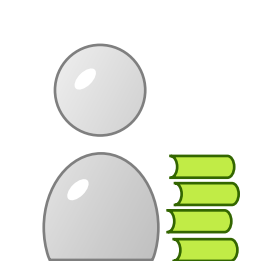
Luka GLAM Media Designer



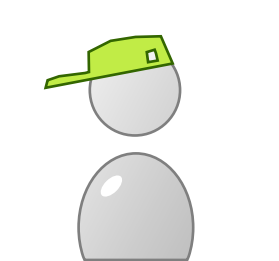
Johanna Digital Art Historian



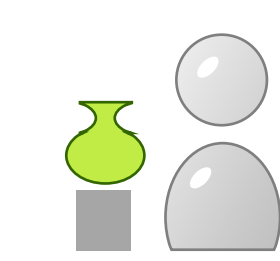
Leon Historian



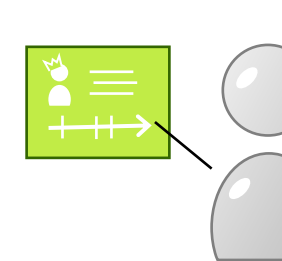
Noel Research Librarian



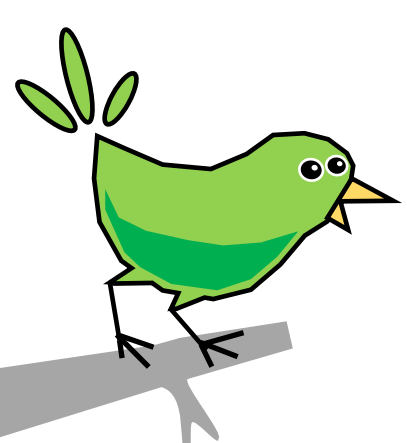
Caspar Casual User



Elea Museum Education Specialist



Helena History Teacher



Danube University Krems



Free University Amsterdam



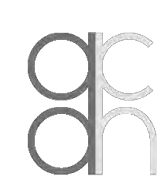
Slovenian Academy of Sciences & Arts



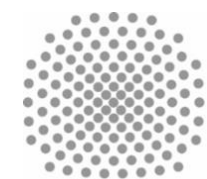
Aalto University



University of Southern Denmark



Austrian Center for DH & CH



Stuttgart University



Fluxguide GesmbH



University of Helsinki

Interested?



<https://intavia.eu>



[intavia@donau-uni.ac.at](mailto:intavia@donau-uni.ac.at)

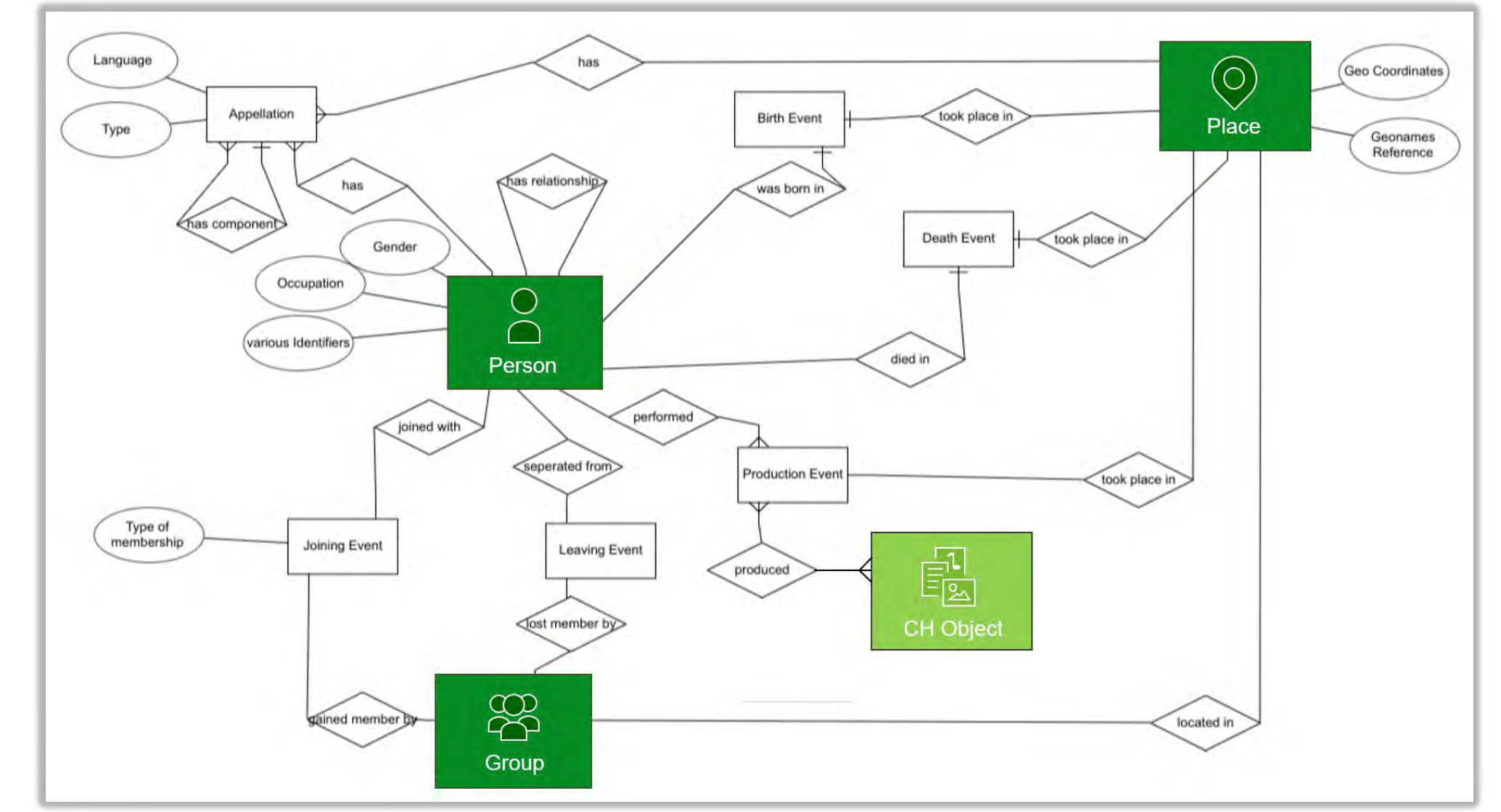
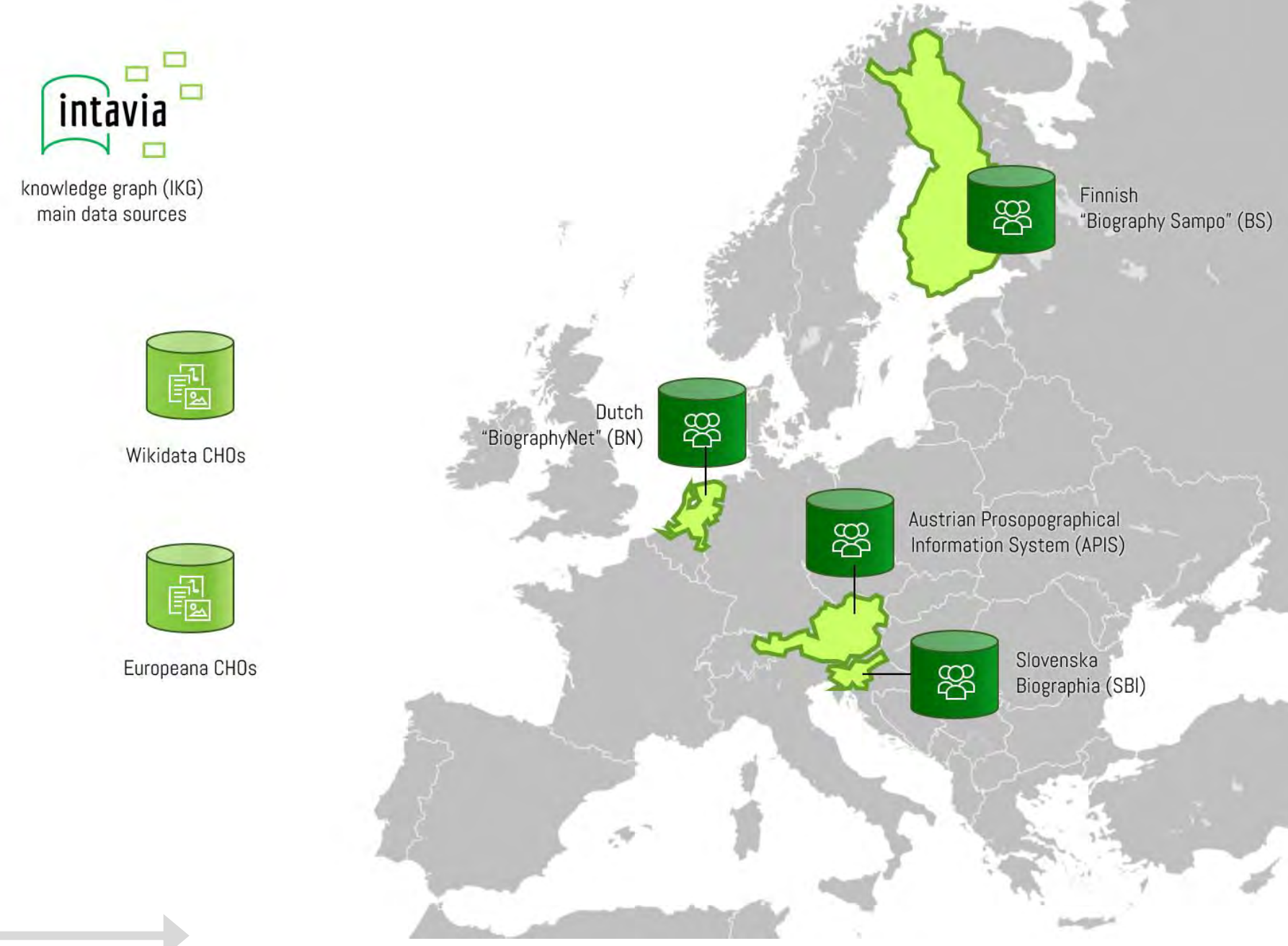


[@projectintavia](https://twitter.com/projectintavia)





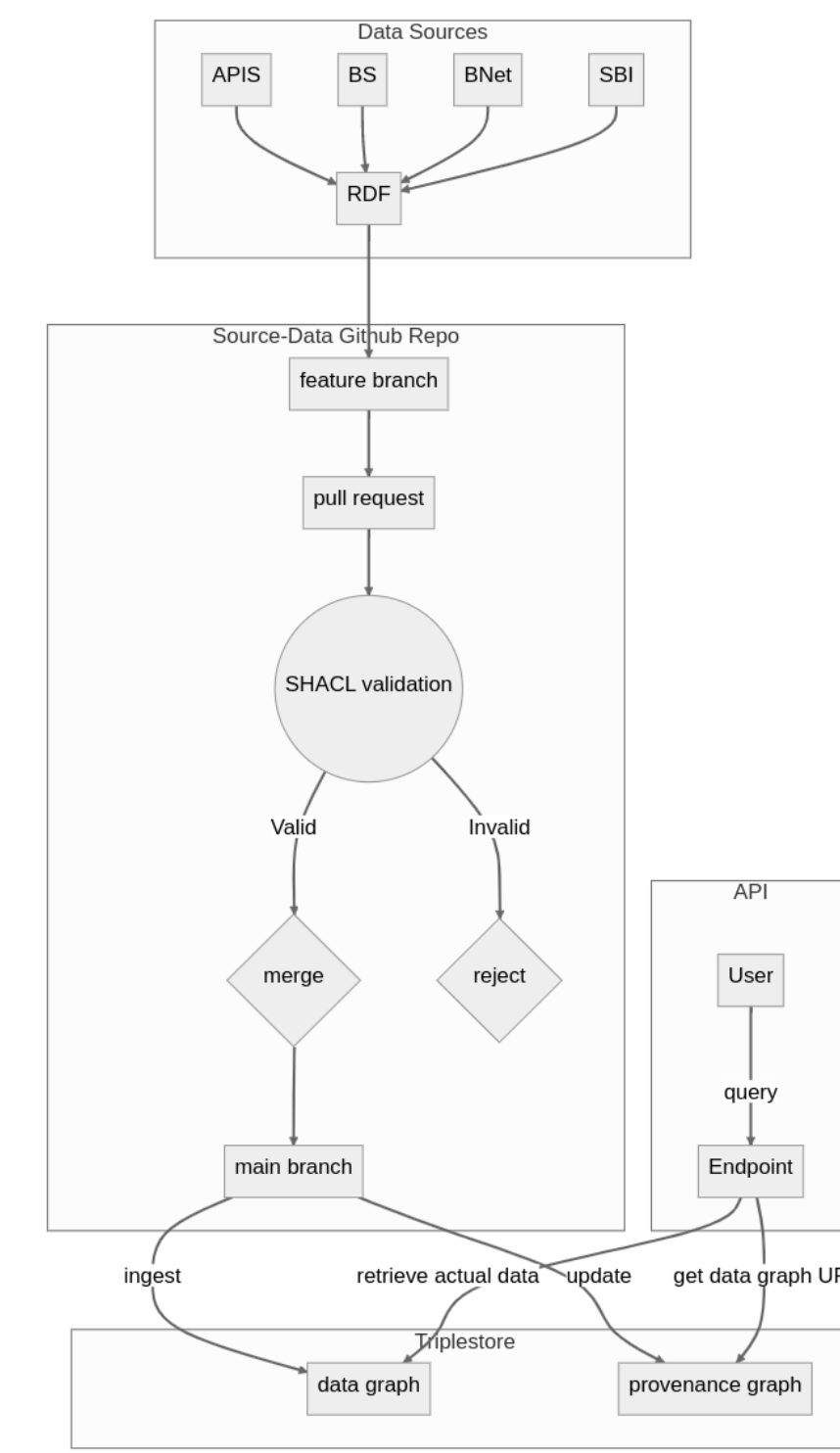
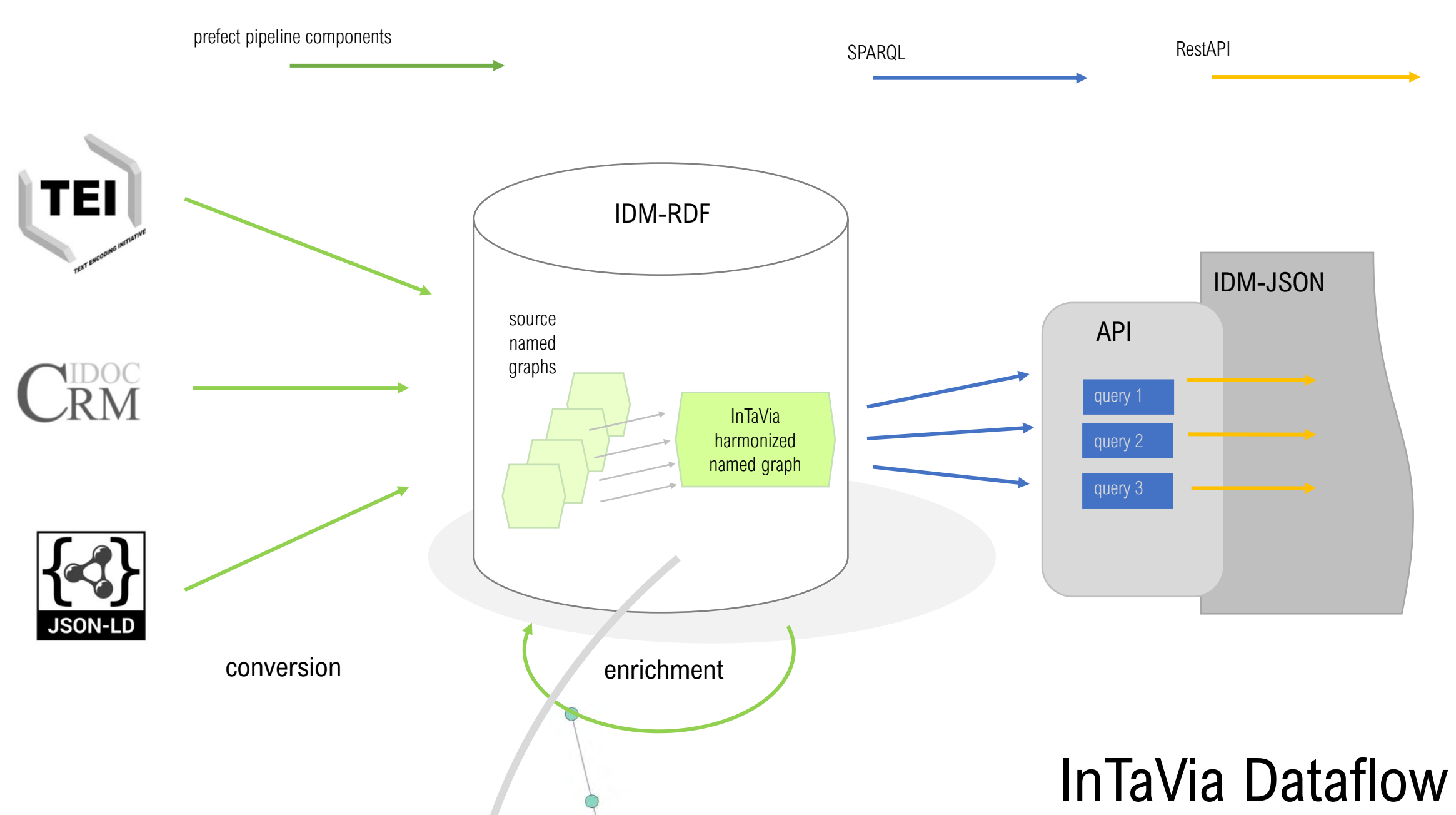
Problem:  
Siloed Databases



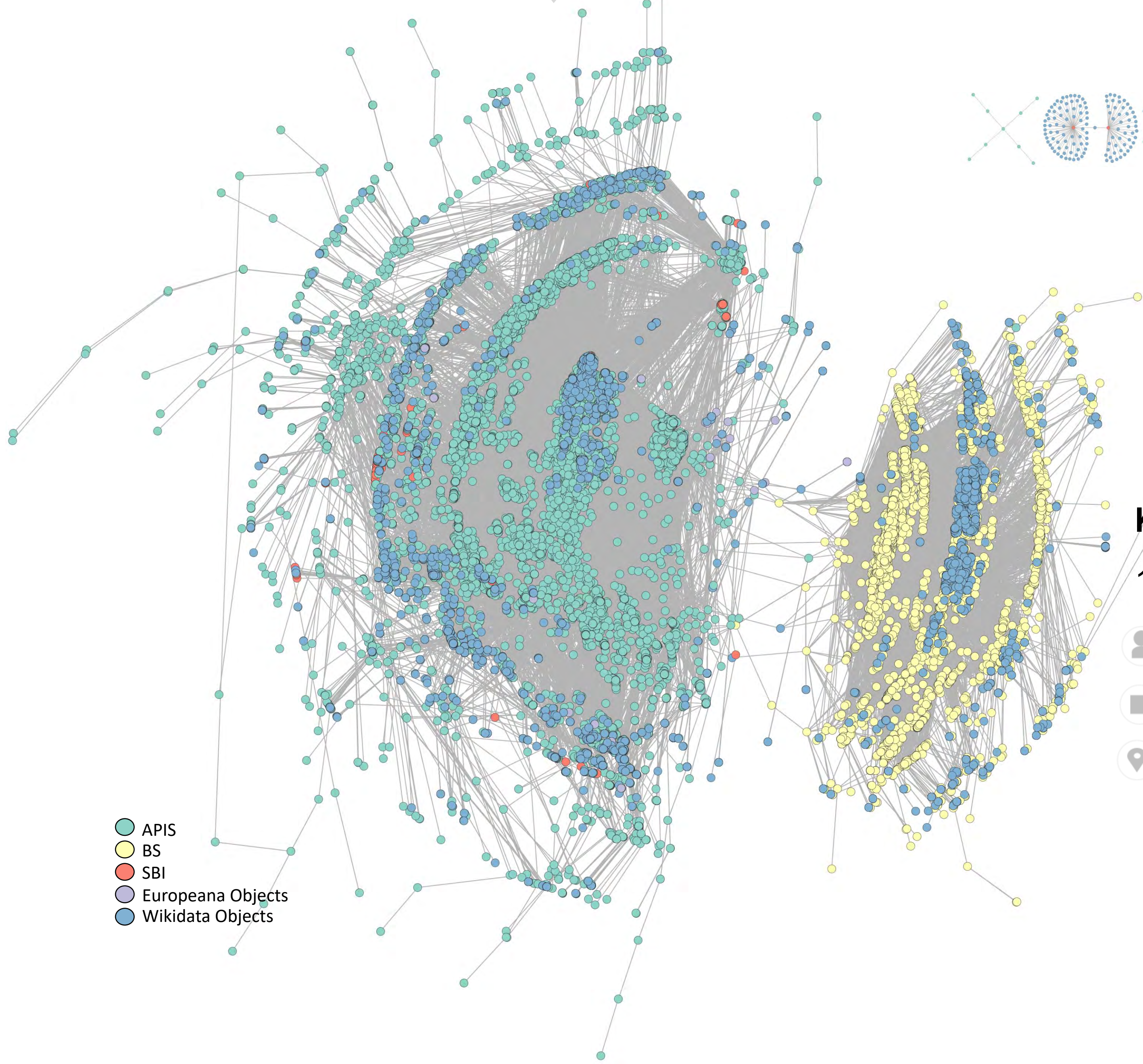
Response: Development of the IDM-RDF data model

## Building a Transnational, Multimodal Knowledge Graph The InTaVia Knowledge Graph (IKG)

Matthias Schlögl



Integration and Ingestion of data into  
the InTaVia knowledge graph (IKG)



**Key facts:**

- 18,187,605 triples related to ...
- 111,551 persons from AT, FI, NL, and SI
- 55,987 cultural heritage objects from wikidata
- 24,446 places

Aim:  
Linking Tangible Objects  
with Intangible Life Histories

**(Open) Challenges:**

- Existing biases in the databases
- Enriching sparse data
- Linking to further in/tangible cultural data sources
- Linking to Europeana cultural objects





"I know it's in here somewhere."

<https://knowledgebase.blogspot.com/2020/09/how-to-convert-information-into.html>

The cultural knowledge graph IKG can be a rich integrative resource for multi-faceted research, but is challenging to access for ...

- ... people without technical / programming skills
- ... users without prior knowledge on the structure and kinds of information available.

To overcome these barriers, InTaVia develops a visualization-based interfaces

- ... for the visual search
- ... for the visual analysis and
- ... for the visual communication of linked cultural information.

Problem:  
Inaccessible Knowledge Graphs

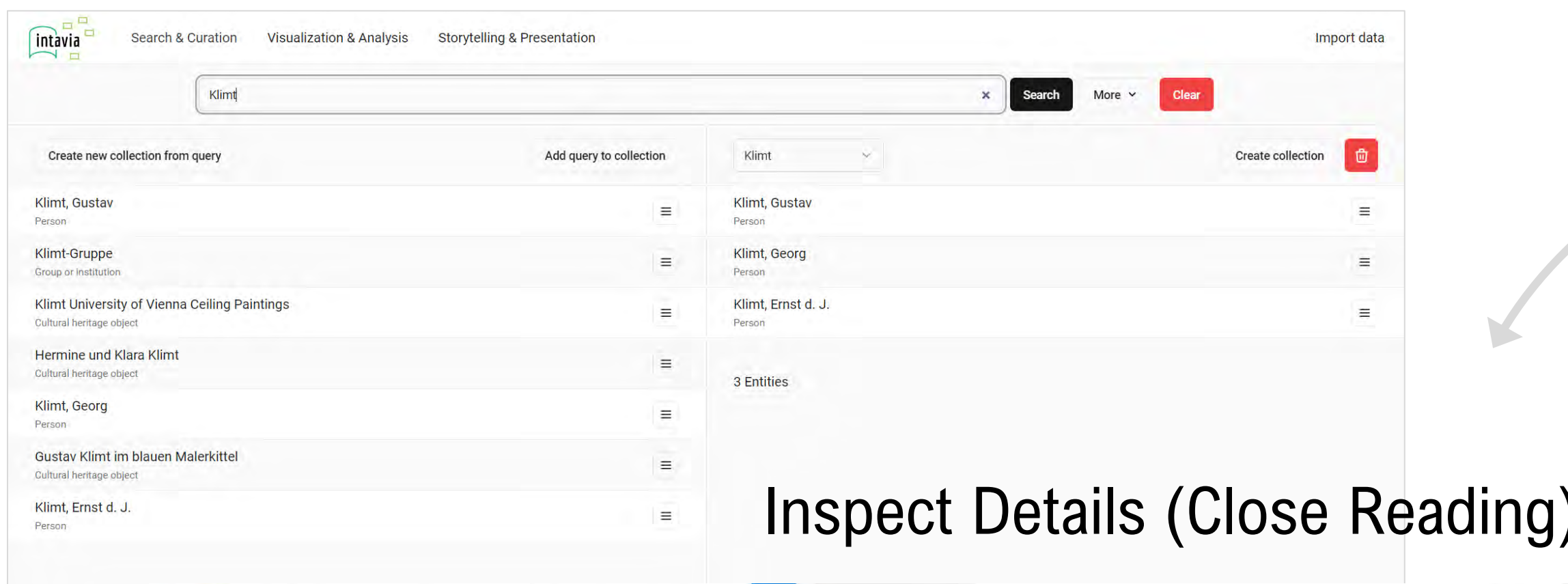
Universität für  
Weiterbildung  
Krems



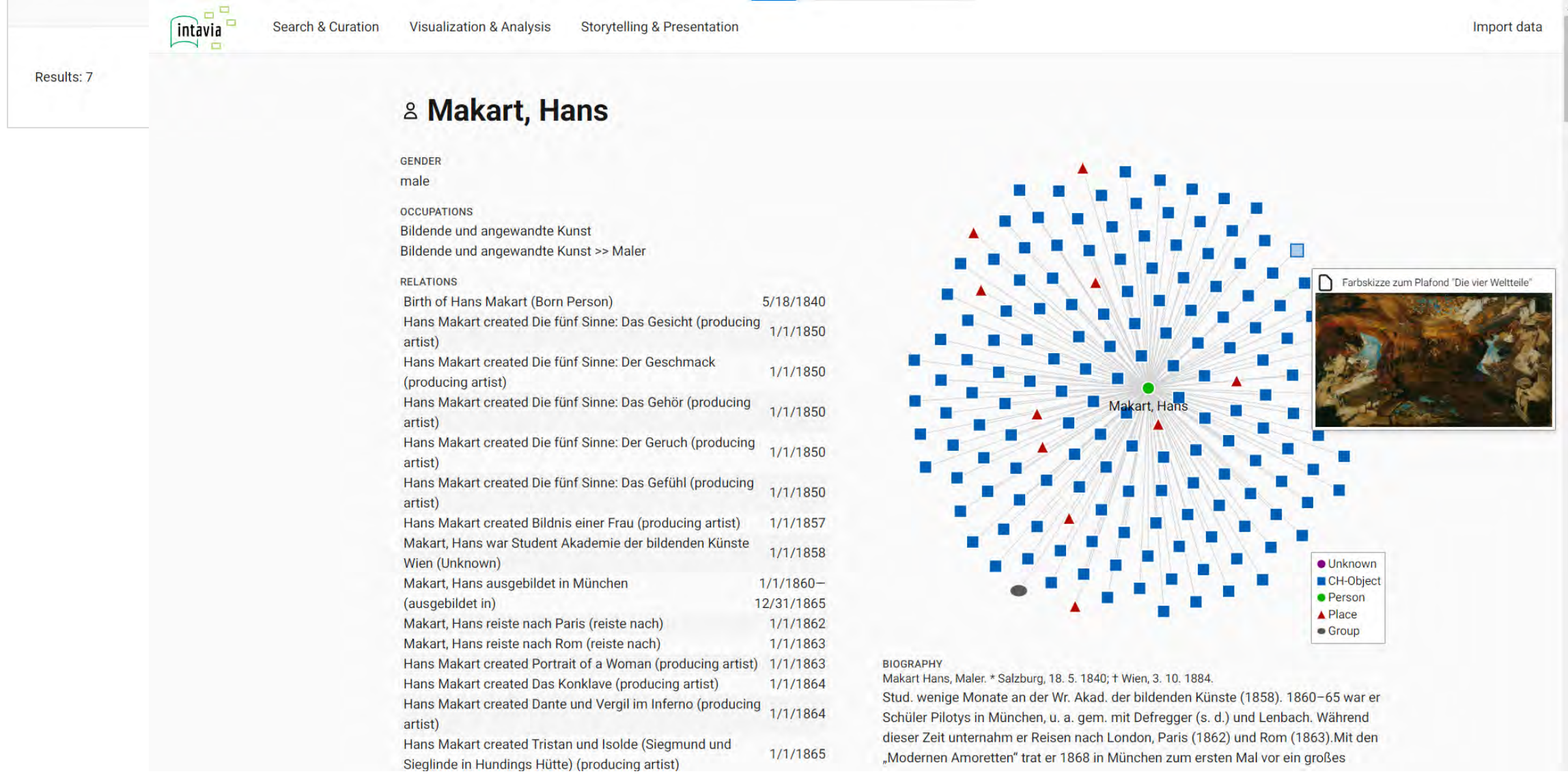
## Visual-Analytical Perspectives on Cultural Information The InTaVia Frontend

Johannes Liem, Florian Windhager, & Eva Mayr

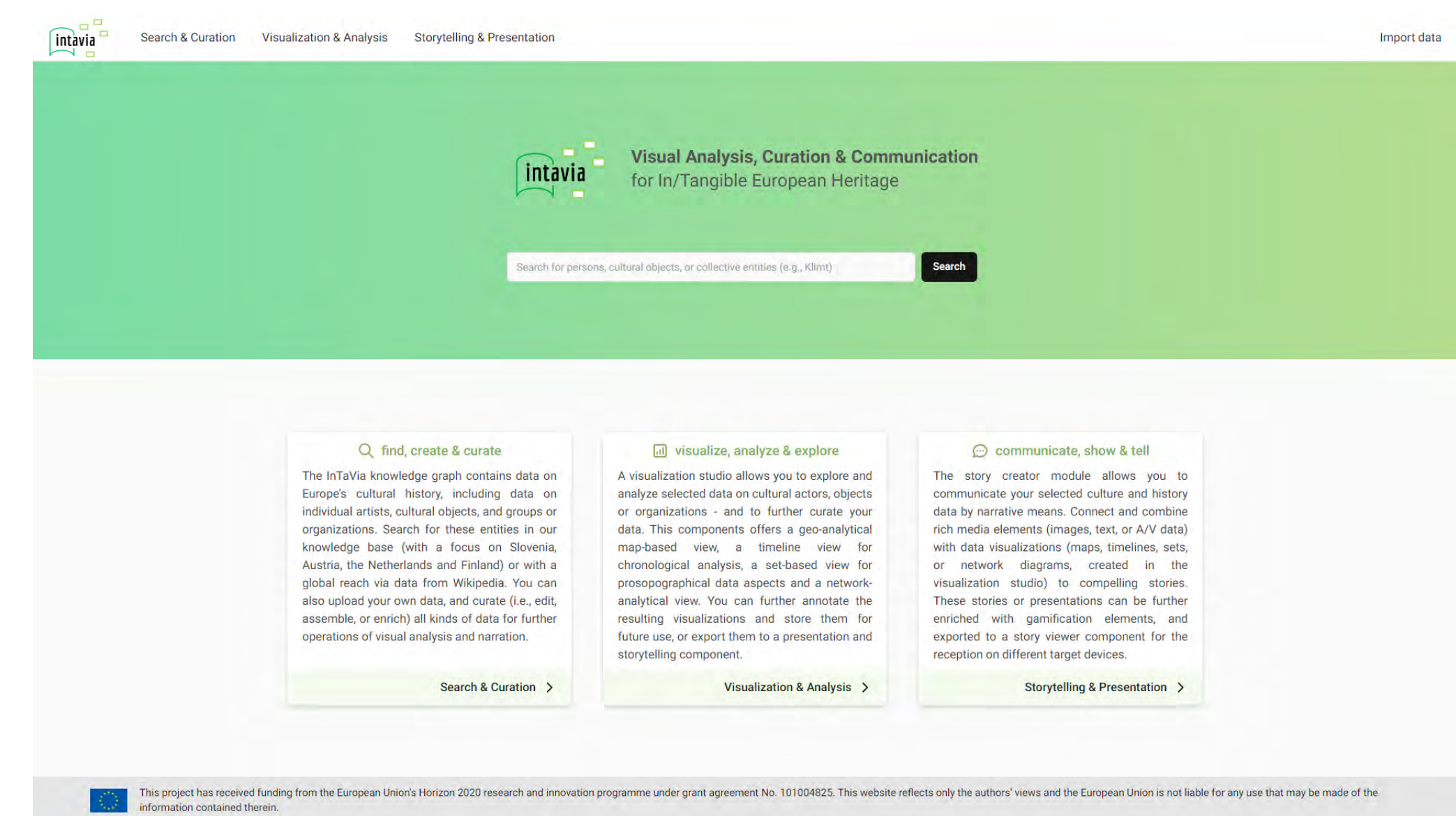
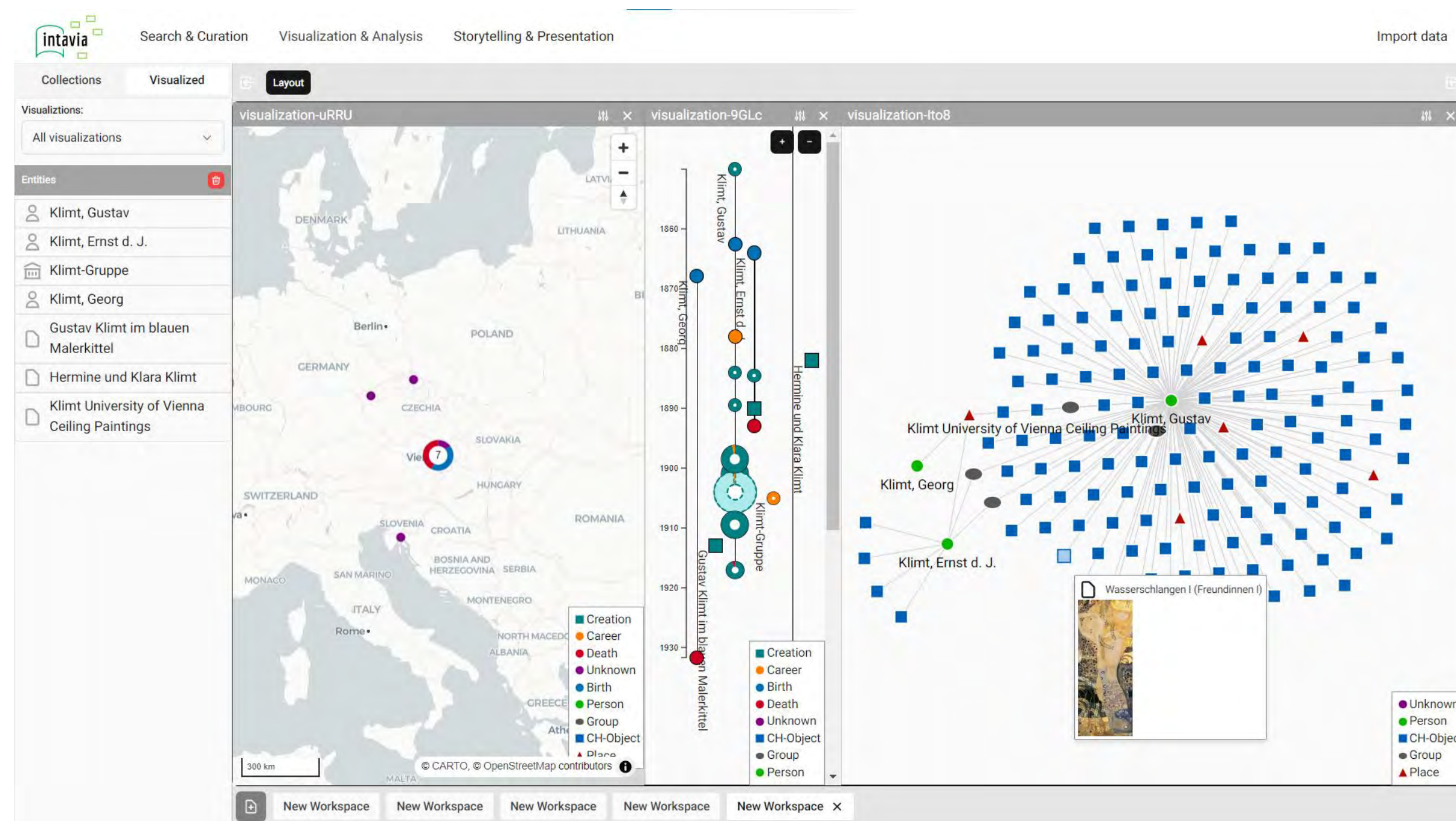
### Query & Select Entities



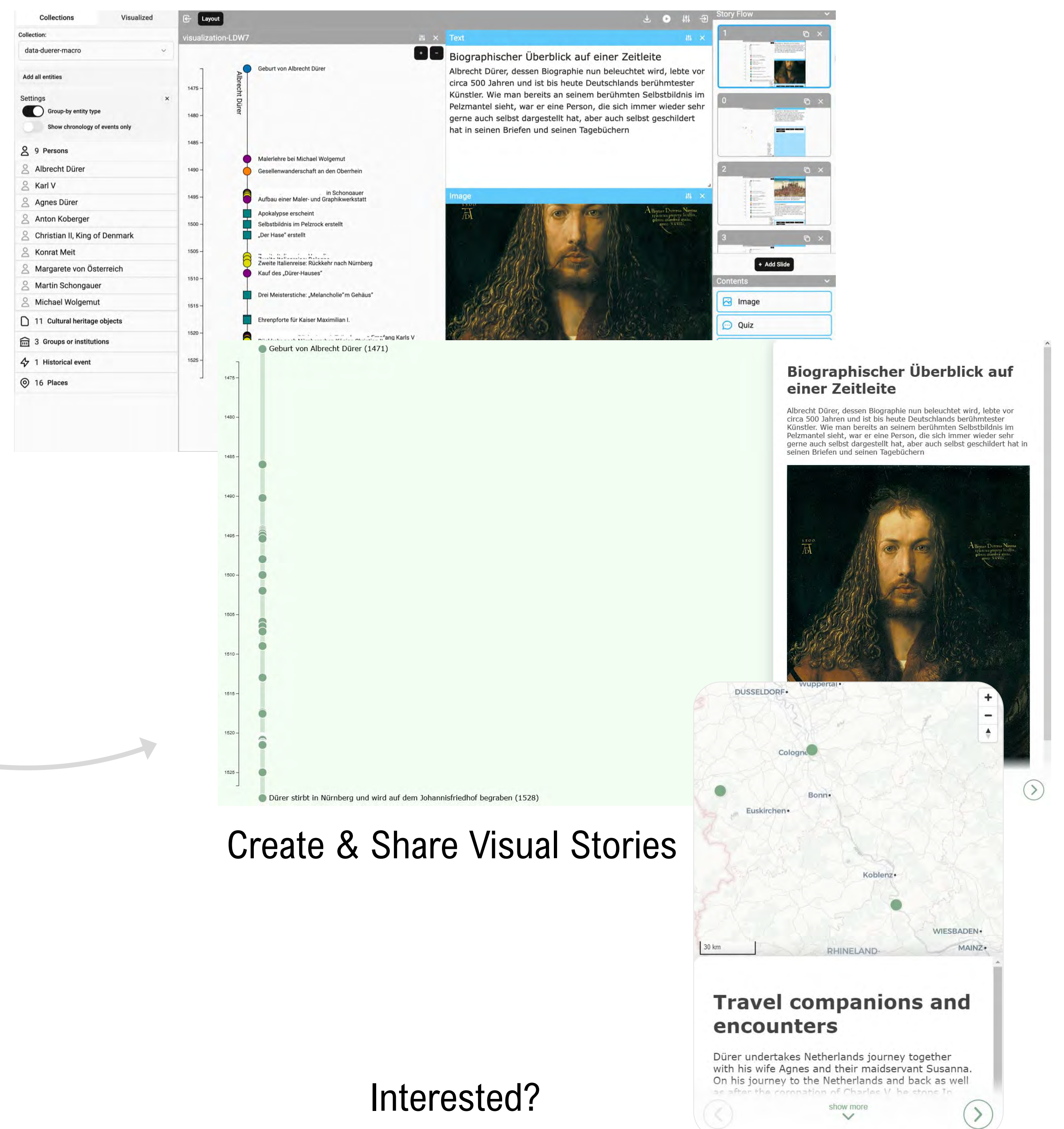
### Inspect Details (Close Reading)



### Visual Analysis (Distant Reading)



The InTaVia Plattform  
<https://intavia.acdh-dev.oew.ac.at/>



Create & Share Visual Stories

Interested?



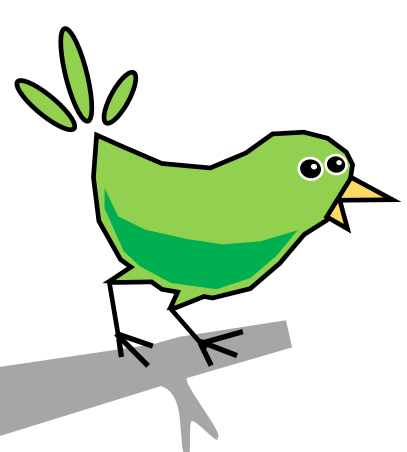
<https://intavia.eu>



[intavia@donau-uni.ac.at](mailto:intavia@donau-uni.ac.at)



[@projectintavia](https://twitter.com/projectintavia)



Danube University  
Krems



Free University  
Amsterdam



Slovenian Academy of  
Sciences & Arts



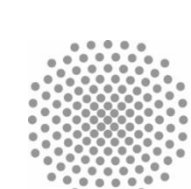
Aalto  
University



University of Southern  
Denmark



Austrian Center  
for DH & CH



Stuttgart  
University



fluxguide  
GesmbH



University of  
Helsinki

