



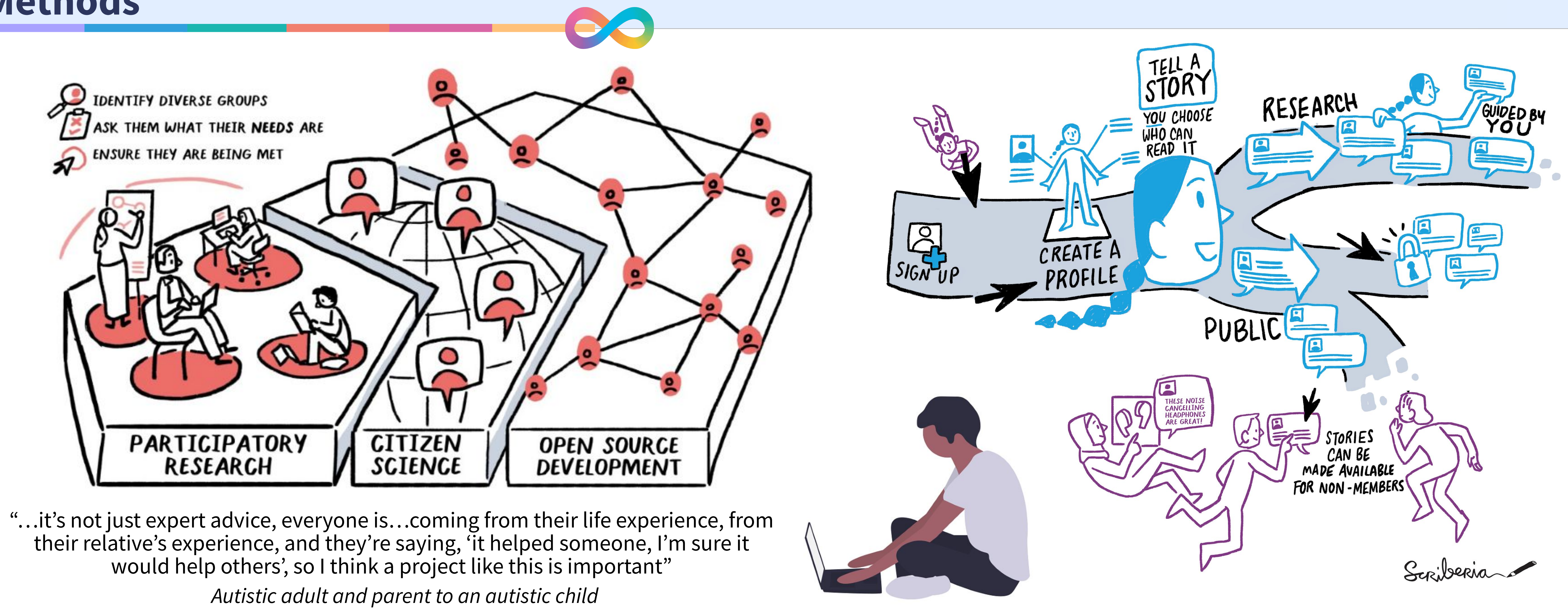
AutSPACES: Co-creating a Citizen Science Platform

Georgia Aitkenhead, Sophia Batchelor, Helen Duncan, Susanna Fantoni, Bastian Greshake Tzovaras, James Kim, David Llewellyn-Jones, Callum Mole, James Scott, Otis Smith, Martin Stoffel, Robin Taylor, Kirstie Whitaker, the AutSPACES community.

Correspondence: gaitkenhead@turing.ac.uk
 Newsletter <https://tinyletter.com/AutisticaTuringCitizenScience>
 @AutSPACE
<https://github.com/alan-turing-institute/AutSPACES>



Methods



Introduction

AutSPACES stands for **Autism research into Sensory Processing for Accessible Community Environments**.

Together with a team of neurodiverse co-researchers and open-source developers, we are using **participatory research to co-create an open source, citizen science platform**.

When it is launched, AutSPACES will be used to collect together **rich, qualitative data** on how sensory processing differences affect autistic people's daily lives.

Goals

- Share** people's stories and adaptive techniques with others who have similar experiences
- Educate** neurotypical people to better support their friends, family and colleagues
- Advise** organisations on how they can design and adapt spaces to improve people's lives

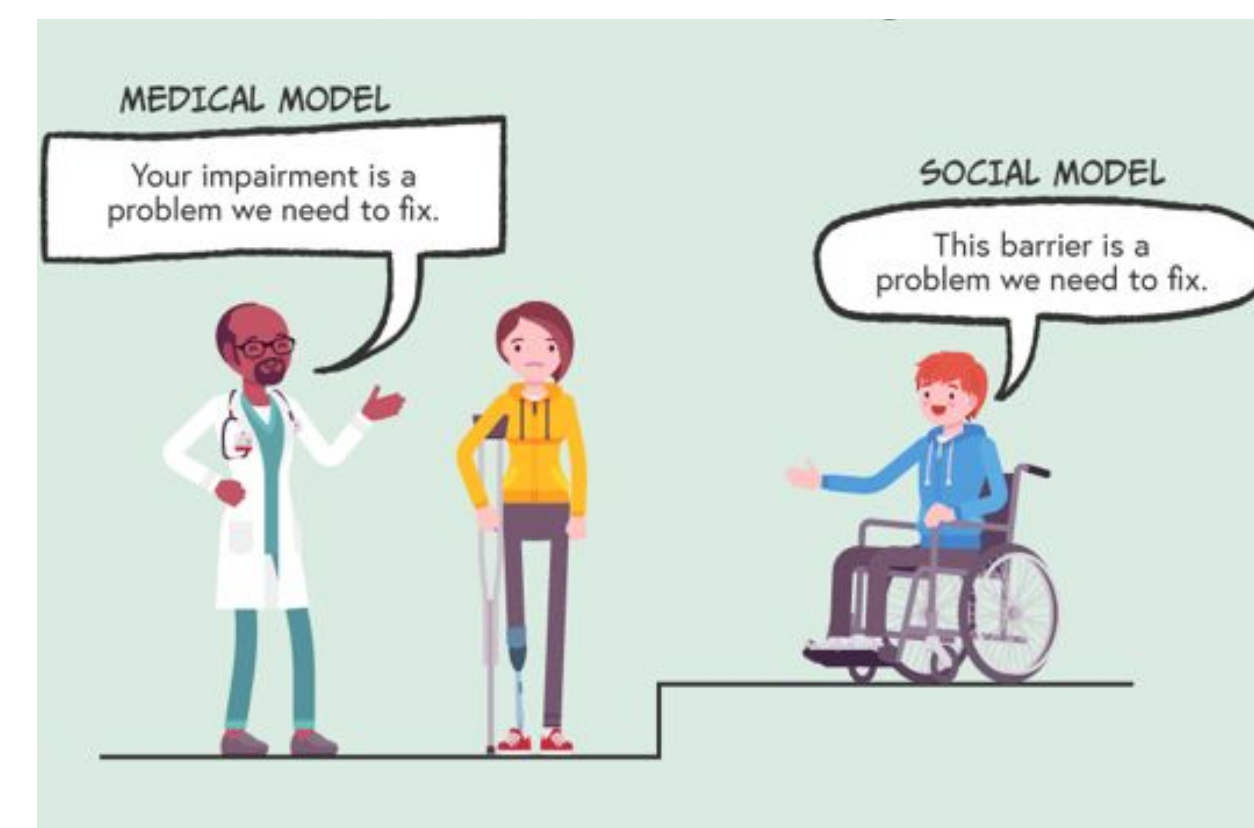
Openly released code and resources: a platform that can be **reused** and **adapted** for other research purposes

9/10 autistic people experience sensory processing differences compared to non-autistic people, for instance they may find lights brighter, sounds louder, or busy spaces more overwhelming.

This can lead to everyday spaces such as school, hospitals, public transport and offices being suboptimal, uncomfortable, or totally inaccessible to many autistic people.

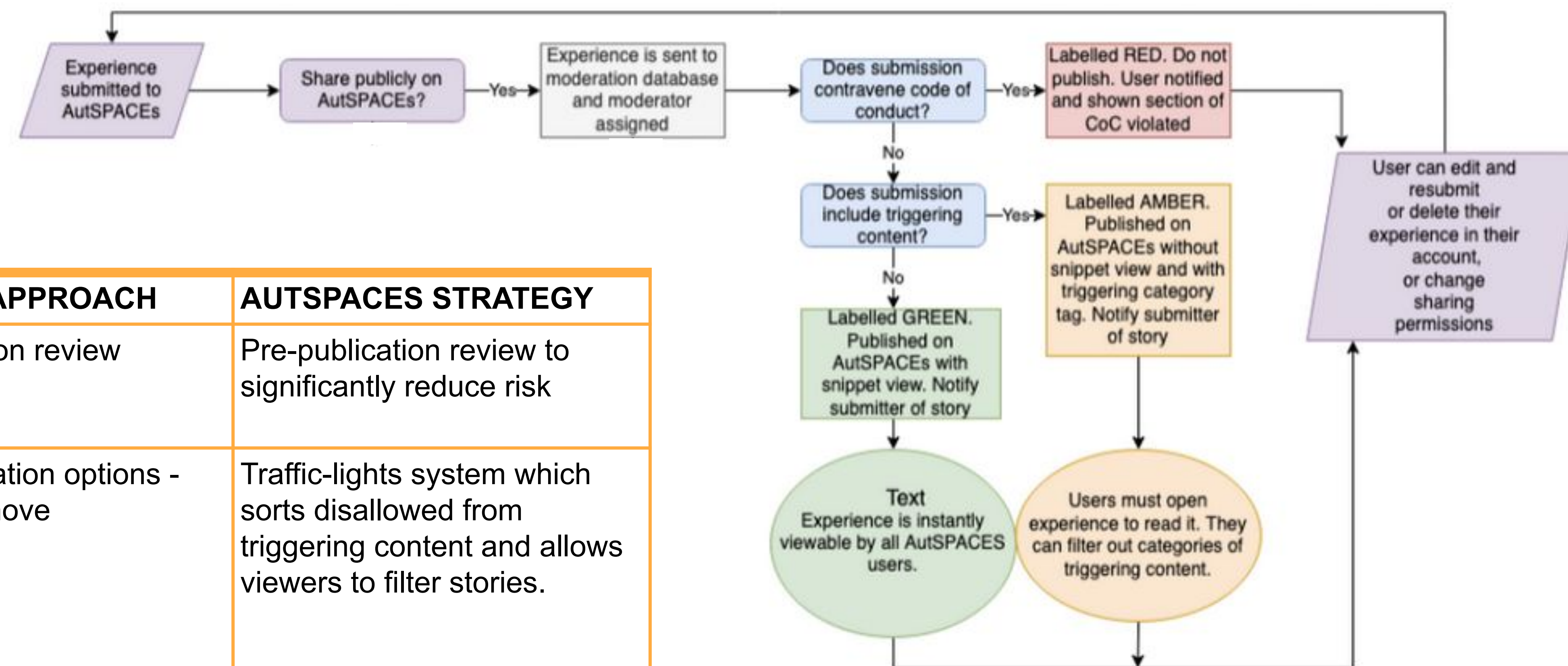
While autism is not a disability, AutSPACES is inspired by the **disability rights movement** social model of disability and motto:

"Nothing About Us Without Us"



Co-design case study

Moderating the AutSPACES platform



MODERATION DILEMMA	STANDARD APPROACH	AUTSPACES STRATEGY
Protecting users from discriminatory or abusive content	Post-publication review	Pre-publication review to significantly reduce risk
Protecting users from triggering content without censoring negative experiences	Binary moderation options - publish or remove	Traffic-lights system which sorts disallowed from triggering content and allows viewers to filter stories.
Allowing autistic people who can't use the platform themselves to be represented while centring autistic voices	Anyone can use or comment	Tailored guidelines for representing others based on co-created principles. No comments on posts

Green= Meets all requirements

Amber= Doesn't break CoC but contains potentially triggering content so will be flagged

Red= Breaks CoC and will not be approved for public sharing

A Diverse Community

Supporting our community

- Meet-up sessions
- Monthly newsletters
- Twitter
- GitHub support and upskilling
- Co-working
- Inclusive facilitation
- Sharing opportunities
- Creating inclusive spaces



Collaborator Stories

Scan here to listen to Susanna talk about moderation for a podcast:



Susanna Fantoni

Scan here to watch Otis share his personal account of being a citizen scientist:



Otis Smith

Future directions

Launch of AutSPACES platform - Autumn/Winter 2023

Collect data and open to researchers

Continue to user test and iterate

Support adaption for other projects

