

A revision of the genus *Trichohoplorana* Breuning, 1961 (Arthropoda, Insecta, Coleoptera, Cerambycidae, Lamiinae, Acanthocinini)

Gui-Qiang Huang¹, Dong-Shuo Liu², Rong-Chuan Xiong¹

¹ School of Biological Science and Technology, Liupanshui Normal University, Liupanshui 553004, Guizhou, China ² Unaffiliated, 401, Unit 1, Building 11, Xiying Qianjie, Tongzhou District, 101149, Beijing, China

Corresponding author: Rong-Chuan Xiong (691477843@qq.com)

Academic editor: Francesco Vitali | Received 16 March 2023 | Accepted 23 April 2023 | Published 10 May 2023

<https://zoobank.org/DD3B08DE-AF5E-4AF5-9E9F-E623C147308D>

Citation: Huang G-Q, Liu D-S, Xiong R-C (2023) A revision of the genus *Trichohoplorana* Breuning, 1961 (Arthropoda, Insecta, Coleoptera, Cerambycidae, Lamiinae, Acanthocinini). ZooKeys 1160: 191–205. <https://doi.org/10.3897/zookeys.1160.103596>

Abstract

A taxonomic revision of the genus *Trichohoplorana* Breuning, 1961 is presented. A junior synonym of *Trichohoplorana*, *Ipochiromima* Sama & Sudre, 2009, **syn. nov.**, is proposed. A junior synonym of *T. dureli* Breuning, 1961, *I. sikkimensis* (Breuning, 1982), **syn. nov.**, is proposed. *Trichohoplorana* is newly recorded from Vietnam. A new species, *T. nigeralba* **sp. nov.** is described from Vietnam. *Trichohoplorana luteomaculata* Gouverneur, 2016 is newly recorded from China and Vietnam. Hind wings and male terminalia of *T. luteomaculata* are described for the first time. *Trichohoplorana* is redescribed, and a key to *Trichohoplorana* species is presented.

Keywords

Hind wings, male terminalia, new faunistic records, new species, synonyms

Introduction

The genus *Trichohoplorana* was established by Breuning (1961) for *Trichohoplorana dureli* Breuning, 1961. It presently consists of six species from Asia (Tavakilian and Chevillotte 2022). Mitono (1943) described *Acanthocinus shirakii* from China (Taiwan), then Gressitt (1951) transferred *A. shirakii* Mitono, 1943 to *Neacanista* Gressitt, 1940, and finally, Gouverneur (2016) transferred *N. shirakii* to *Trichohoplorana* and

described *T. luteomaculata* from Laos (Houa Phan). Holzschuh (1989, 1990, 2015) described *T. juglandis*, *T. mutica*, and *T. tenuipes*, respectively, from South Asia.

In this work, new synonyms, new faunistic records, and a new species are provided. Wings and male terminalia are described for the first time. Consequently, *Trichohoplorana* now consists of seven species from Asia. A redescription and a key to all species of *Trichohoplorana* are presented.

Material and methods

Specimens examined are deposited in following institutions and private collections:

- CDSL** Collection Dong-Shuo Liu, Beijing, China
CHS Collection Carolus Holzschuh, Villach, Austria
CWW Collection Andreas Weigel, Wernburg, Germany
CXG Collection Xavier Gouverneur, Rennes, France
LPSNU School of Biological Science and Technology, Liupanshui Normal University, Liupanshui, Guizhou, China
MNHN Muséum national d'Histoire naturelle, Paris, France
SYSU The Museum of Biology, Sun Yat-sen University, Guangzhou, China

The methods of taking photographs for Figs 2C–G, 4B–F, 6A–E followed Huang et al. (2020), and methods of photographing Fig. 3A–J mainly followed Huang and Li (2019) but were taken with a E3ISPM21000KPA camera and ImageView software. The terminology of hind wings vein follows Švácha and Lawrence (2014). The terminology of male terminalia follows Ślipiński and Escalona (2013).

Taxonomy

Trichohoplorana Breuning, 1961

Trichohoplorana Breuning, 1961: 548; Breuning 1963: 534; Breuning 1978: 49; Löbl and Smetana 2010: 213. Type species: *Trichohoplorana dureli* Breuning, 1961, by original designation.

Trichohoplorana Breuning 1977: 115 (misspelling).

Ipochiromima Sama and Sudre 2009: 384 (replacement name for *Mimipochira* Breuning, 1982: 25); Löbl and Smetana 2010: 209. Type species: *Mimipochira sikkimensis* Breuning, 1982, by original designation. Syn. nov.

Redescription. Head distinctly narrower than prothorax, frons with a narrow, median furrow extending from base of clypeus up to apical margin of pronotum; eyes coarsely faceted, lower lobes of eyes distinctly far away from each other and longer than genae;

antennae slender, distinctly longer than body, scape strongly expanded before apex, pedicel distinctly longer than broad. Pronotum transverse, with a tubercle on each side, punctured, with a pair of subuliform tubercles at sides of middle; prosternal process broad, with a longitudinal depression in middle, procoxal cavities closed posteriorly. Scutellum linguiform. Elytra covered with black or brown spots and a series of black or brown spots along suture; disc elongate, distinctly broader than pronotum at base, gradually narrow from near apical third, punctured, with a pair of tubercles at base and near scutellum, with a pair of bumps behind the tubercles; humeral angles rounded and slightly processed forward. Mesocoxal cavities closed externally to mesepimera. Femora strongly clavate.

Diagnosis. *Trichohoplorana* is very similar to *Neacanista* Gressitt, 1940 in having the pronotum with a tubercle at each side, with a pair of tubercles at the sides of the middle, the elytra with a pair of tubercles at the base and near the scutellum, with a pair of bumps behind the tubercles, and a strongly clavate femora. However, *Trichohoplorana* differs from *Neacanista* in having the antennal scape strongly expanded before the apex (gradually thickened before the apex in *Neacanista*) and the pedicel distinctly longer than broad (broader than long in *Neacanista*).

Distribution. Bhutan, China, India, Laos, Nepal, Vietnam (**new country record**).

Remarks. Breuning (1982) established *Mimipochira* for *M. sikkimensis* Breuning, 1982, but this genus was a junior homonym of *Mimipochira* Breuning, 1956. Hence, Sama and Sudre (2009) introduced the new name *Ipochiromima*. After comparing photographs of the holotypes of *T. dureli* Breuning, 1961 (Fig. 1A) and *M. sikkimensis* (Fig. 1B, C), we consider these two species as belonging to the same genus, based on above re-described characters. Thus, we treat *Ipochiromima* as a junior synonym of *Trichohoplorana*.

Trichohoplorana dureli Breuning, 1961

Fig. 1A–D

Trichohoplorana dureli Breuning, 1961: 548 (type locality: “Pedong, Sikkim, India”); Breuning 1963: 534 (catalogue); Breuning 1978: 49 (redescription), pl. IV, fig. 15 (holotype); Löbl and Smetana 2010: 213 (catalogue).

Ostedes dureli: Breuning and Heyrovský 1961: 143.

Mimipochira sikkimensis Breuning, 1982: 26 (type locality: “Sikkim, India”). Syn. nov. *Ipochiromima sikkimensis*: Sama and Sudre 2009: 384 (catalogue); Löbl and Smetana 2010: 209 (catalogue).

Type material examined. *Trichohoplorana dureli* Breuning, 1961: **holotype**, ♂ (MNHN), Pedong, Sikkim, India, 1914, L. Durel leg., [examined from a photograph (Fig. 1A)]; *Mimipochira sikkimensis* Breuning, 1982: **holotype**, ♂ (MNHN), Sikkim, India [examined from three photographs (Fig. 1B–D)].

Distribution. Bhutan, India (Sikkim).

Remarks. The differences between *T. dureli* and *I. sikkimensis* (Fig. 1A–C) mainly reflect in the shape of the elytral brown spots: the large spots near elytral middle, at

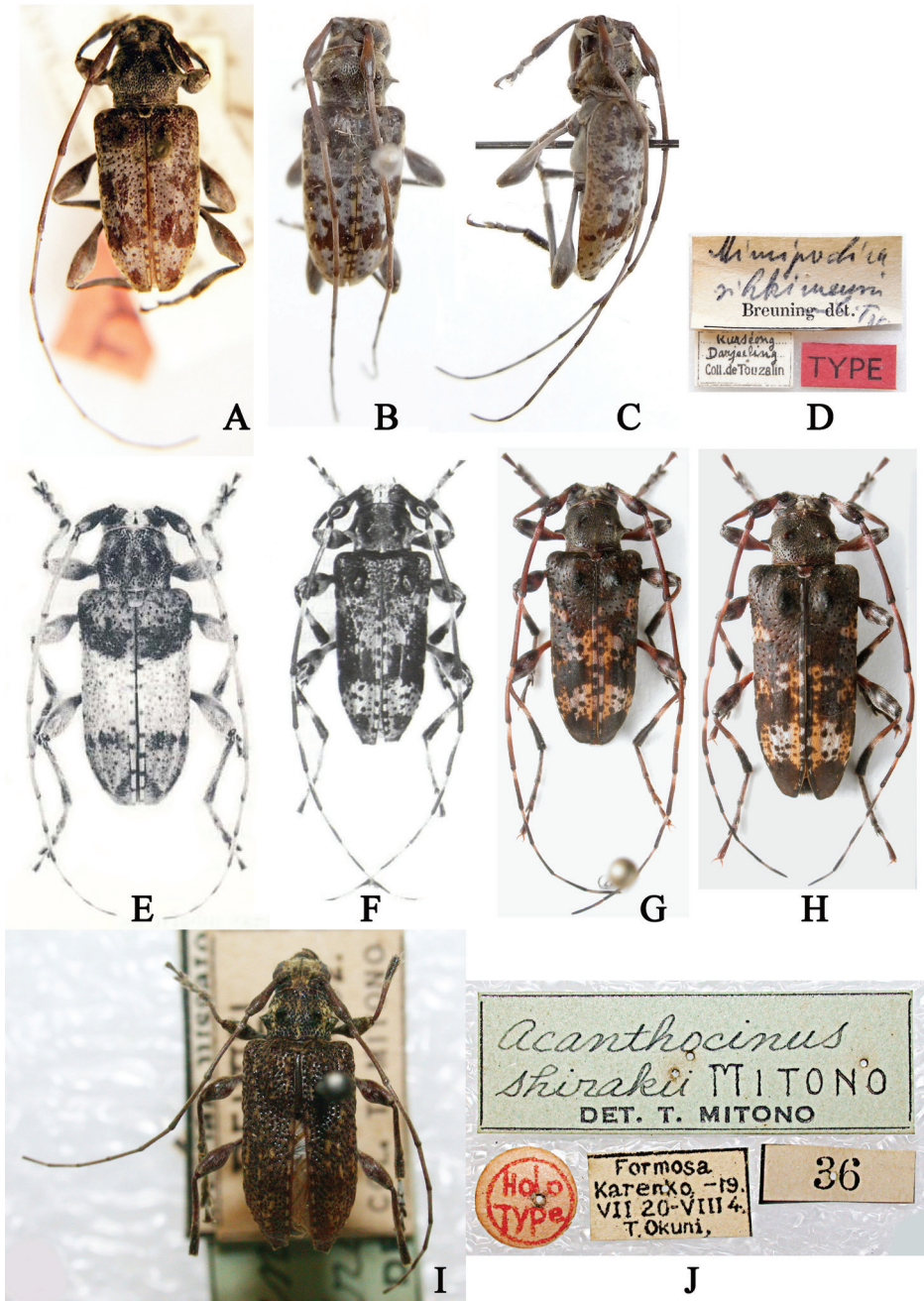


Figure 1. Types of *Trichohoplorana* spp. **A** *Trichohoplorana dureli*, holotype, male habitus, dorsal view (photo by Andreas Weigel) **B–D** *Mimipochira sikkimensis* **B** holotype, male habitus, dorsal view **C** holotype, male habitus, lateral view **D** labels (photos by Xavier Gouverneur) **E** *Trichohoplorana juglandis*, holotype, male habitus, dorsal view (photo reproduced from Holzschuh 1989) **F** *Trichohoplorana mutica*, holotype, male habitus, dorsal view (photo reproduced from Holzschuh 1990) **G, H** *Trichohoplorana tenuipes* **G** holotype, male habitus, dorsal view **H** paratype, female habitus, dorsal view (photos provided by Holzschuh) **I, J** *Acanthocinus shirakii*: **I** holotype, male habitus, dorsal view **J** labels (photos reproduced from Huang et al. 2015).

apical third, and at apex. They are actually intraspecific differences; thus, we treat *I. sikkimensis* as a junior synonym of *T. dureli*.

***Trichohoplorana juglandis* Holzschuh, 1989**

Fig. 1E

Trichohoplorana juglandis Holzschuh, 1989: 401 (type locality: “Menchunang, East Dochu-La, Thimphu district, West Bhutan”), fig. 8 (holotype, male); Löbl and Smetana 2010: 213 (catalogue); Weigel 2012: 408 (catalogue), pl. XXVII, fig. b; Lazarev 2019: 154 (catalogue).

Distribution. Bhutan (Thimphu), India (Arunachal Pradesh).

***Trichohoplorana mutica* Holzschuh, 1990**

Fig. 1F

Trichohoplorana mutica Holzschuh, 1990: 193 (type locality: “Footpath from Sherpa-gaon to Ghora Tabela, Langtang Khola, Nawakot, C-Nepal”), fig. 11 (holotype, male); Weigel 2006: 506 (catalogue); Löbl and Smetana 2010: 213 (catalogue).

Distribution. Nepal (Nawakot).

***Trichohoplorana tenuipes* Holzschuh, 2015**

Fig. 1G, H

Trichohoplorana tenuipes Holzschuh, 2015: 473 (type locality: “Bhalukhop, district of Taplejung, East Nepal”), figs 3 (holotype, male) and 4 (paratype, female).

Type material examined. *Holotype*, ♂ (CHS), Bhalukhop, district of Taplejung, East Nepal, alt. 3000m, 11–21.V.2013, Emil Kučera leg., [examined from a photograph (Fig. 1G)]; *paratype*, 1 ♀ (CHS), data same as holotype, [examined from a photograph (Fig. 1H)].

Distribution. Nepal (Taplejung).

***Trichohoplorana shirakii* (Mitono, 1943)**

Fig. 1I, J

Acanthocinus shirakii Mitono, 1943: 584 (type locality: “Reimei, Hassenzan, Taiwan”).
Neacanista shirakii: Gressitt 1951: 518 (catalogue); Breuning 1978: 40 (redescription); Hua 1982: 99 (catalogue); Nakamura, Makihara and Saito 1992: 95 (catalogue);

Hua 2002: 218 (catalogue); Chou 2004: 326, fig (male); Hua et al. 2009: 95, pl. XCV, fig. 1091 (male and female); Löbl and Smetana 2010: 210 (catalogue); Huang et al. 2015: 560 (catalogue), figs 32 (holotype, male), 33 (holotype, labels), and 34 (4 in map).

Trichohoplorana shirakii: Gouverneur 2016: 72, figs 2a (holotype, male) and 2b (holotype, labels).

Distribution. China (Taiwan).

Trichohoplorana luteomaculata Gouverneur, 2016

Figs 2–5

Trichohoplorana luteomaculata Gouverneur, 2016: 69 (type locality: “Ban Saleui, Massif du Mont Phou Pan, Houa Phan Province, Northeast Laos”), figs 1a, b (holotype, male) and 1c (paratype, female).

Type material examined. *Holotype*, ♂ (CXG), Ban Saleui, Massif du Mont Phou Pan, Houa Phan Province, Northeast Laos, alt. 1300–1900m, 1.V.2012, local collector leg., [examined from two photographs (Fig. 2A, B)]; *paratype*, 1 ♀ (CXG), data same as holotype, but 2.V.2014 [examined from a photograph (Fig. 4A)].

Additional material examined. **CHINA:** 1 ♀ (SYSU), Suoli village, Tongdao County, Huaihua City, Hunan Province, V.1981, Li-Jun Zhang leg.; 1♂1♀ (CDSL, figs 2C–G, 3, 4B–F), Jianfengling National Natural Reserve, Hainan Province, 7.VI.2021, 18°42'34.75"N, 108°52'34.50"E, alt. 954 m, Dong-Shuo Liu leg., collected by light trap (Fig. 5); **VIETNAM:** 1 ♀ (LPSNU), Yen Bai Province, August 2020, local collector leg.; 1 ♀ (CWW), Gem. Ta Pin, Kreis Sapa, Lao Cai Province, 22°22.196'N, 103°48.701'E, alt. 2318 m, 26.VI–01.VII.2017, N.H. Binh leg., [examined from a photograph provided by Andreas Weigel].

Supplementary description. Male (Figs 2C–G, 3). Hind wings (Fig. 2G) with AA₃₊₄ vein bifurcate near apical third; AA₄ vein and AA₃ vein closed to each other apically and not extending to margin; AA₃ vein connected with Cu vein near apical third; CuA₂ vein connected with MP₃₊₄ vein near basal third of MP₃₊₄ vein and not extending to margin; MP₃₊₄ vein bifurcate near middle; MP₄ vein, MP₃ vein and MS vein not extending to margin; a short and vague uncertain vein (? , either a crossvein or base of MP₃₊₄ vein) located between Cu vein and MP₁₊₂ vein.

Male terminalia. Tergite VIII (Fig. 3A) sparsely covered with short brown setae apically and at sides of apical third, nearly truncated at apex. Sternite VIII (Fig. 3B) anchor-shaped, sparsely covered with short brown setae at apical sides, apical margin slightly depressed; spiculum relictum distinctly longer than sternite VIII. Stem of spiculum gastrale more than 2.0 times as long as branches and curved towards dorsum at base (Fig. 3C). Parameres of tegmen sparsely covered with short brown setae on apical third and several long setae near apical fifth; each paramere gradually constricted from base to apex, but

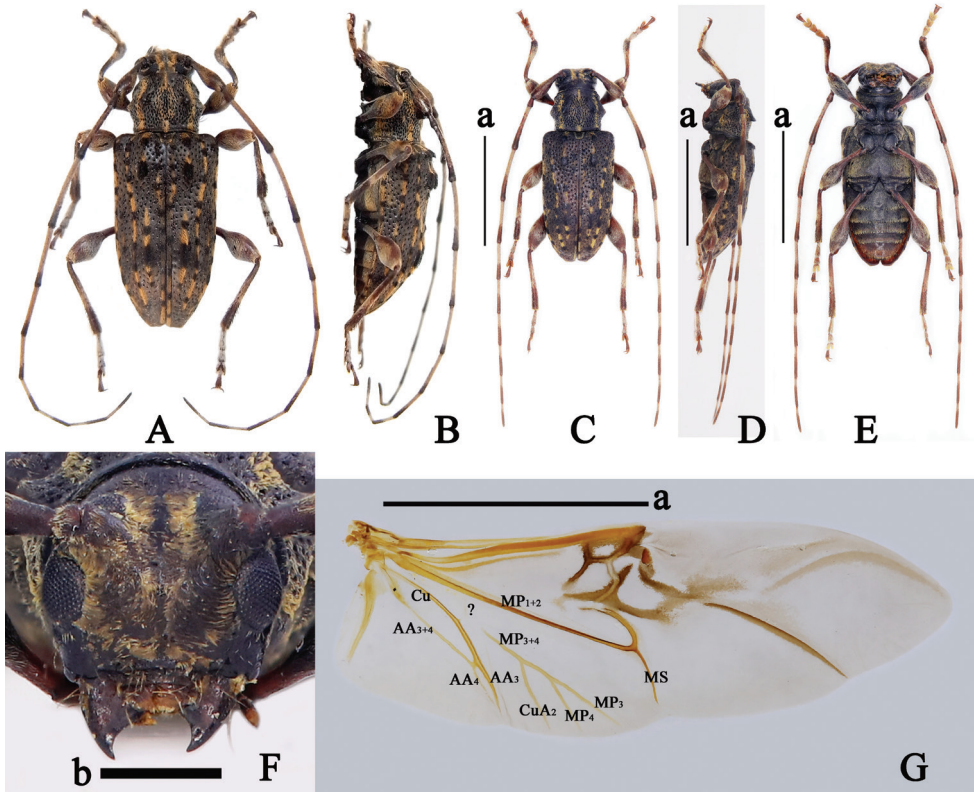


Figure 2. *Trichoboplorana luteomaculata*, males **A, B** holotype habitus **A** dorsal view **B** lateral view (photos by Xavier Gouverneur) **C–G** material from Hainan, China **C** habitus, dorsal view **D** habitus, lateral view **E** habitus, ventral view **F** head, frontal view **G** right hind wing, dorsal view. Abbreviations: A: anal, Cu: cubital, MP: medial posterior, MS: medial spur, ?: a vein of uncertain homology (either a crossvein or base of MP_{3+4} vein). Scale bars: 5 mm (a); 1 mm (b).

external margin slightly expanded near apex; apex of both parameres rounded and closed together; phallobase nearly 3.0 times as long as parameres and processed outward near middle; anterior tegminal strut curved outward (Fig. 3D–F). Penis curved towards venter, ventral plate distinctly longer and broader than dorsal plate and slightly sharp at apex; dorsal plate widely rounded at apex; apex of dorsal struts obliquely truncated (Fig. 3G–J).

Female (Fig. 4B–F). Hind wings (Fig. 4F) with AA_{3+4} vein bifurcate near apical third; AA_4 vein and AA_3 vein fused apically and not extending to margin; AA_3 vein connected with Cu vein near apical third; CuA_2 vein connected with MP_{3+4} vein near basal fifth of MP_{3+4} vein and not extending to margin; MP_{3+4} vein bifurcate near middle, MP_4 vein, MP_3 vein and MS vein not extending to margin; a short uncertain vein (?), either a crossvein or base of MP_{3+4} vein) located between Cu vein and MP_{1+2} vein.

Distribution. China (Hainan, Hunan), Laos (Houa Phan), Vietnam (Lao Cai, Yen Bai).

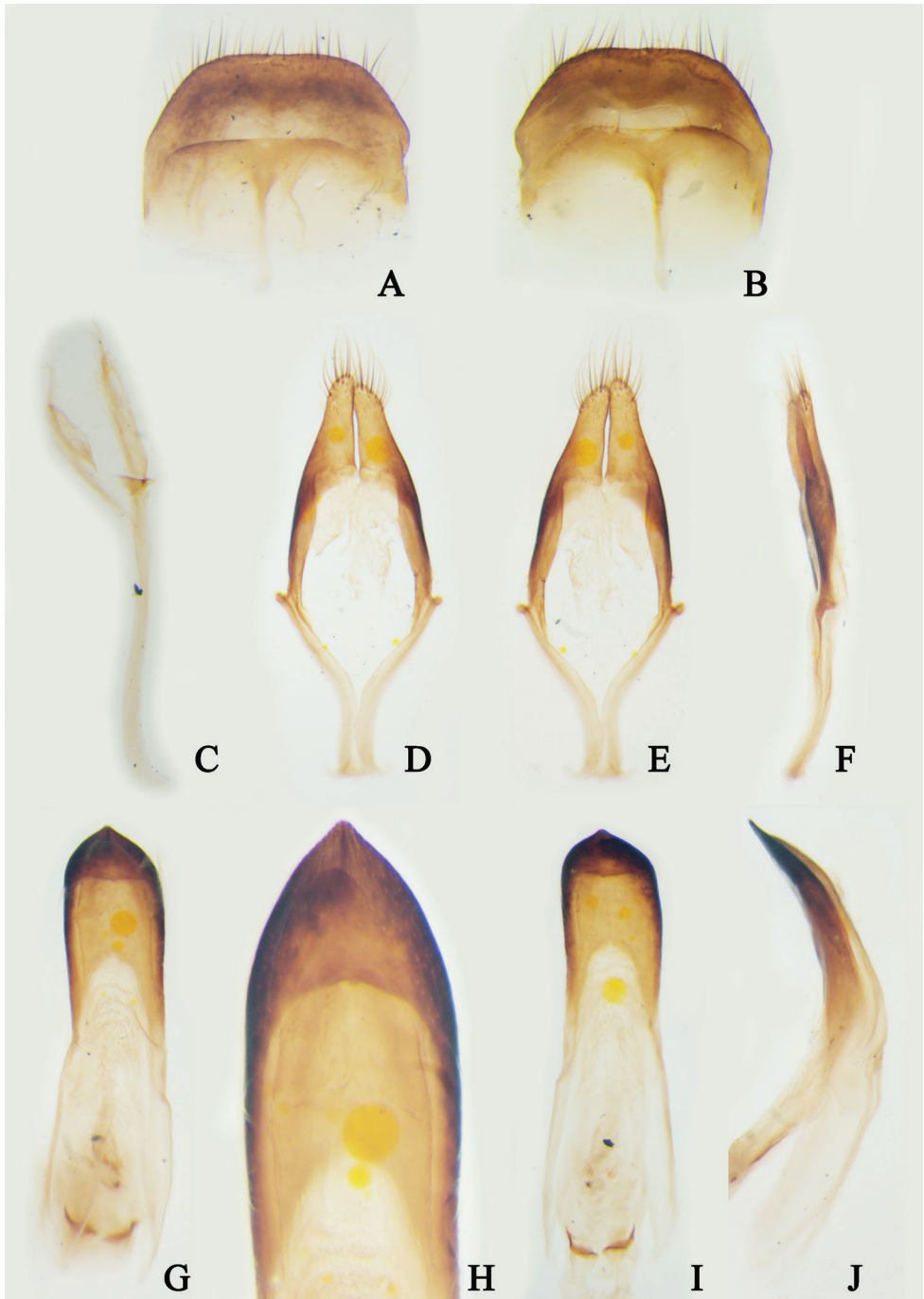


Figure 3. Male terminalia of *Trichohoplorana luteomaculata* from Hainan, China **A** tergite VIII, dorsal view **B** sternite VIII, ventral view **C** spiculum gastrale, dorsal view **D–F** tegmen **D** dorsal view **E** ventral view **F** lateral view **G–J** penis **G** dorsal view **H** dorsal view **I** ventral view **J** lateral view. Not to scale.

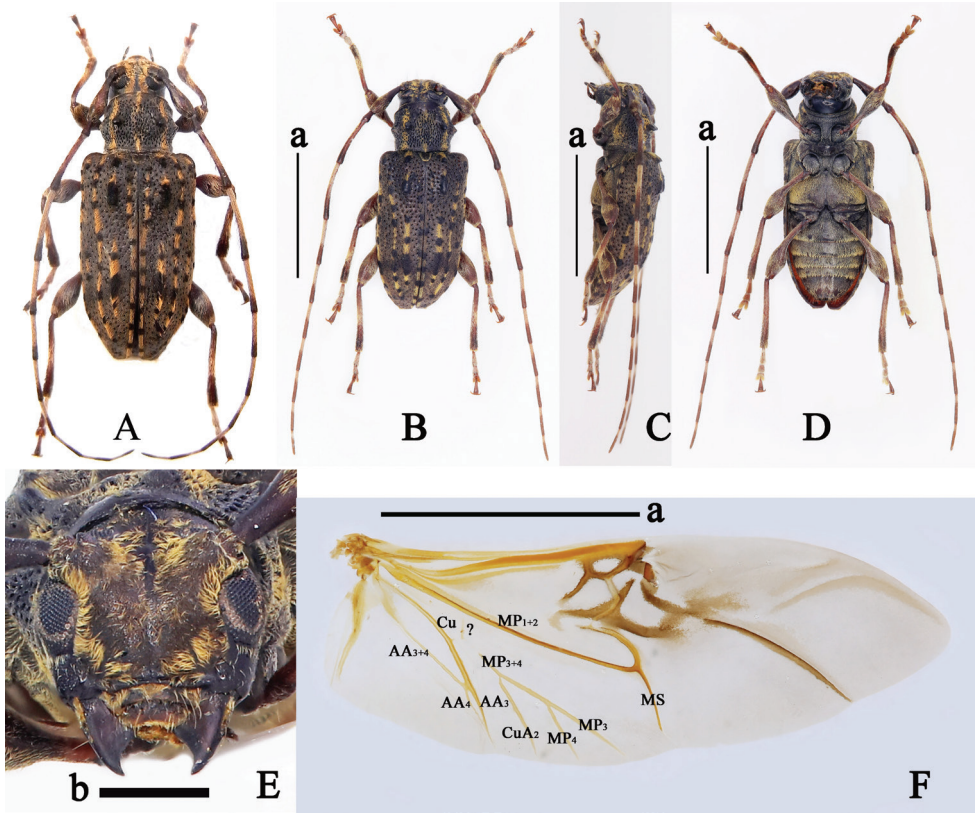


Figure 4. *Trichohoplorana luteomaculata*, females **A** paratype habitus, dorsal view (photo by Xavier Gouverneur) **B–F** material from Hainan, China **B** habitus, dorsal view **C** habitus, lateral view **D** habitus, ventral view **E** head, frontal view **F** right hind wing, dorsal view. Abbreviations: A: anal, Cu: cubital, MP: medial posterior, MS: medial spur, ?: a vein of uncertain homology (either a crossvein or base of MP₃₊₄ vein). Scale bars: 5 mm (**a**), 1 mm (**b**).

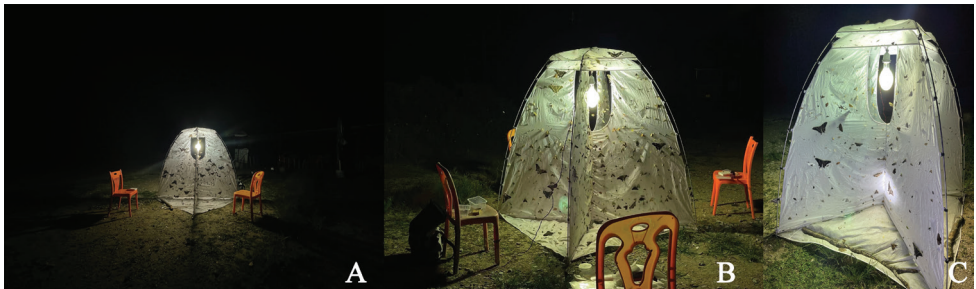


Figure 5. Scene showing collecting *Trichohoplorana luteomaculata* by light trap from Hainan, China (photos by Dong-Shuo Liu).

***Trichoboplorana nigeralba* sp. nov.**

<https://zoobank.org/68605399-2CE3-485B-96B7-2530C1A471B8>

Fig. 6

Type material examined. *Holotype*, ♀ (LPSNU), Yen Bai Province, VIETNAM, V.2019, local collector leg.

Description. Female, holotype. Body length: 14.0 mm, humeral width: 5.2 mm. Body black, antennal scape (except for outside of apex), pedicel, antennomeres III (except for apex), IV (except for apex), V (basal half), VI (basal half), elytra (apical half), protibiae (basal half), mesofemora (basal half), mesotibiae (basal half), metafemora (most of parts) and metatibiae (basal half) reddish brown; claws yellowish brown (Fig. 6A–C).

Frons (Fig. 6D) densely covered with short yellow and white hairs. Vertex densely covered with short white hairs on middle and short yellow hairs on center (Fig. 6A). Antennae sparsely covered with sub-erect, short, white setae; scape sparsely covered with short, brown setae; pedicel sparsely covered with short, brown setae, with several short, white setae at internal side of apex; antennomere III sparsely covered with short, white setae basally, other parts densely with short, brown setae; antennomeres IV–XI densely covered with short white setae on the basal half and densely with short, brown setae on the apical half; antennomeres III–VII fringed with several long, black setae ventrally; antennomeres VIII–X fringed with one or two long, black setae ventrally; antennae 1.5 times as long as body, length (mm) of each antennomere: scape = 2.7, pedicel = 0.8, III = 3.0, IV = 3.0, V = 2.2, VI = 2.0, VII = 1.7, VIII = 1.6, IX = 1.6, X = 1.5, XI = 1.3; antennomeres III and IV curved inward (Fig. 6A–C). Pronotum (Fig. 6A) covered with three yellow haired bands: two located at sides and starting from near anterior margin to posterior margin, one located in middle and starting from anterior margin to posterior margin; disc with a pair of subtriangular, yellow haired spots located at sides of middle; near anterior of pronotum distinctly expanded outward, pronotum densely punctured (except for apex and base), base of the subuliform tubercles on pronotum expanded forward. Prosternum (sides) and propleuron (venter) sparsely covered with short, yellow hairs (Fig. 6B, C). Scutellum (Fig. 6A) sparsely covered with short black hairs, densely covered with yellow hairs at apex, depressed in middle of apical margin. Elytra (Fig. 6A, B) sparsely covered with short black hairs on the basal half, a short yellow haired band at lateral margins of base, several yellow haired spots arranging into an longitudinal line starting from near posterior humeral angle to basal third, a yellow haired spot located behind the bumps, and several yellow spots along suture from basal fourth to middle; the tubercles at elytral base and near scutellum, and the bumps behind the tubercles densely covered with short, black setae; apical half of each elytron densely covered with short white hairs and four longitudinal yellow haired bands (first band located at lateral margin, second and third bands located in middle and fused at apical half, fourth band located near suture); disc 1.9 times as long as wide at base, rounded apically, moderately covered with dense coarse punctures at basal half. Mesosternum, mesepisternum, and mesepimeron sparsely covered with short, yellow hairs; metasternum, metepisternum, and metepimeron densely covered with short,

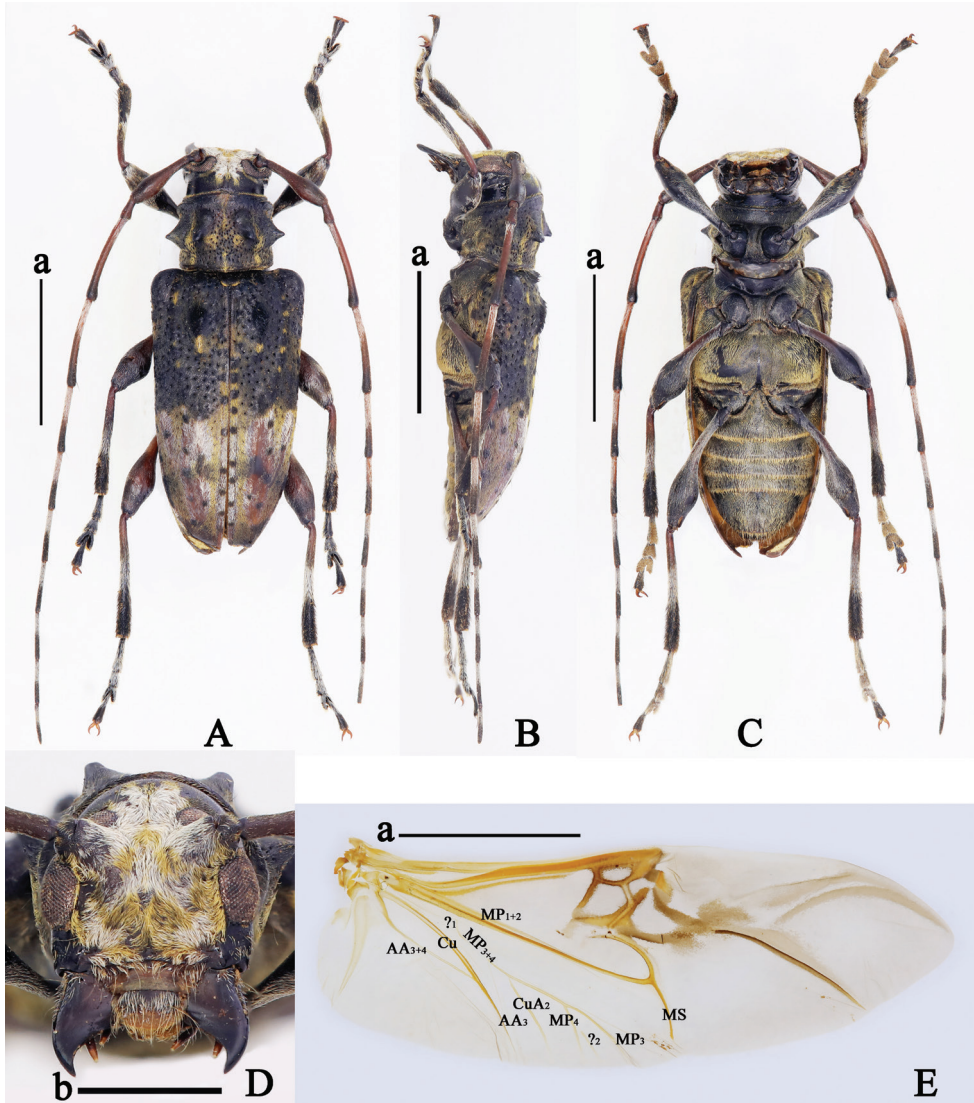


Figure 6. *Trichohoplorana nigeralba*, holotype, female **A** habitus, dorsal view **B** habitus, lateral view **C** habitus, ventral view **D** head, frontal view **E** right hind wing, dorsal view. Abbreviations: A: anal, Cu: cubital, MP: medial posterior, MS: medial spur, ?₁: a vein of uncertain homology (either a crossvein or base of MP₃₊₄ vein), ?₂: an uncertain vein. Scale bars: 5 mm (a), 2 mm (b).

yellow hairs (Fig. 6C). Femora sparsely covered with short white setae and several suberect, long, white setae at external side; tibiae covered with extremely sparse, suberect, long, white setae, sparsely with short, thin, black setae on the basal third, densely with short, white setae in middle, and densely with short, thick, black setae on the apical third; tarsomere I–III (except for venter) densely covered with short white and sparsely suberect, long, white setae dorsally, tarsomere V (except for venter) sparsely covered

with short, white setae at basal half and short, black setae on the apical half, with more sparse long black setae at apex (Fig. 6A–C). Abdominal ventrites I–V densely covered with short, yellow hairs, the hairs more dense at apices of ventrites I–IV; apex and sides of ventrite V sparsely covered with long, yellow pubescences (Fig. 6C).

Hind wings (Fig. 6E) with AA_{3+4} vein not bifurcate, AA_4 vein missed, AA_3 vein connected with Cu vein near apical 1/3 and not extending to margin; CuA_2 vein connected with MP_{3+4} vein near basal 1/3 of MP_{3+4} vein and not extending to margin; MP_{3+4} vein bifurcate near apical 1/3, some parts of base of MP_{3+4} vein missed, a short and vague uncertain vein (?₁, either a crossvein or base of MP_{3+4} vein) connected with base of MP_{3+4} vein; MP_4 vein, MP_3 vein and MS vein not extending to margin; a short uncertain vein (?₂) located between MP_4 vein and MP_3 vein, not extending to margin. Abdominal ventrite V raised at apical sides and truncated apically (Fig. 6C).

Male. Unknown.

Etymology. The specific epithet of this new species is derived from the Latin words “niger” and “albus” referring to most of parts of elytral basal half sparsely covered with short, black hairs and most of parts of elytral apical half densely with short, white hairs.

Distribution. Vietnam (Yen Bai).

Diagnosis. This new species can be distinctly distinguished from other species of *Trichohoplorana* by its peculiar elytral pattern (Fig. 6A).

Remarks. When the senior author received the holotype of this new species, the right antennomere XI was missing and the elytral apex was broken. Then, the head, left antennomere XI, and prothorax were separated from the body due to his carelessness, and he correspondingly glued to the body the separated portions with white emulsoid. Consequently, some hairs on the antennae, elytra, metaventrite, and legs were worn so that some characters are unclear.

Key to species of *Trichohoplorana*

- 1 Elytra with a broad transverse white haired band on the middle..... *T. juglandis*
- Elytra without a broad transverse white haired band on the middle 2
- 2 Elytra not covered with short white or grayish-white hairs 3
- Elytra covered with short white or grayish-white hairs..... 4
- 3 Tips of the lateral tubercles of the prothorax obtuse, elytral apex slightly obliquely truncated, with the marginal angle obtuse and not distinctly processed, elytral punctuations fine *T. luteomaculata*
- Tips of the lateral tubercles of the prothorax pointed, elytral apex distinctly obliquely truncated, with the marginal angle pointed and distinctly stretched, elytral punctuations coarse *T. shirakii*
- 4 Most of parts of elytra densely covered with grayish-white hairs *T. dureli*
- Most of parts of elytra not densely covered with grayish-white hairs..... 5
- 5 Elytra with a yellow haired spot located behind bumps, most of parts of elytral apical half densely covered with short white hairs..... *T. nigeralba*
- Elytra without a yellow haired spot located behind bumps, most of parts of elytral apical half not densely covered with short, white hairs 6

- 6 Lateral tubercles of prothorax thick, elytra with a transverse band behind bumps, marginal angles distinctly processed *T. mutica*
- Lateral tubercles of prothorax thin, elytra with a transverse band on the middle, rounded apically *T. tenuipes*

Acknowledgements

We sincerely appreciate Mr Xavier Gouverneur (CXG) for providing photographs of the holotype of *Trichohoplorana luteomaculata* and *Mimipochira sikkimensis*, Dr Andreas Weigel (CWW) for providing a photograph of the holotype of *Trichohoplorana dureli*, Dr Carolus Holzschuh (CHS) for providing photographs of the type of *Trichohoplorana tenuipes*. We are very grateful to Andreas Weigel for providing material of *T. luteomaculata* and literature, to Dr Ping Wang (Yangtze University, Jingzhou, Hubei, China) for providing literature, and to Prof Hong Pang (SYSU), Dr Bing-Lan Zhang (SYSU), and Mr Wei-Cai Xie (SYSU) for providing kind help during the senior author's visits to SYSU. We express our special appreciation to Mr Ming-Zhi Zhao (South China Agricultural University, Guangzhou, Guangdong, China) for obtaining materials of *T. luteomaculata* and *T. nigeralba*. We also thank the reviewers Dr Eduard Vives (Natural Science Museum of Barcelona, Spain), Mr Xavier Gouverneur (Rennes, France), and Dr Francesco Vitali (Academic Editor for Cerambycidae) for improving our manuscript.

This research was supported by Guizhou Provincial Science and Technology Foundation (黔科合基础-ZK[2022]一般527), the Fund Project of the Education Department of Guizhou Province (黔教技[2022]091号, 黔教技[2022]054号, 黔教技[2022]338号), the Science and Technology Innovation Team Project of Liupanshui Normal University (LPSSYKJTD201602).

References

- Breuning S (1961) Nouveaux Cerambycidae des collections du Muséum de Paris. Bulletin du Muséum National d'Histoire Naturelle de Paris (2^{ème} série) 32(6) [1960]: 536–548.
- Breuning S (1963) Catalogue des Lamières du Monde (Col. Céramb.). Verlag des Museums G. Frey, Tutzing bei München (7): 463–555.
- Breuning S (1977) Révision de la tribu des Acanthocinini de la région Asiato-Australienne (Coleoptera: Cerambycidae), première partie. Mitteilungen aus dem Zoologischen Museum in Berlin 53(1): 111–155. <https://doi.org/10.1002/mmzn.19770530103>
- Breuning S (1978) Révision de la tribu des Acanthocinini de la région Asiato-Australienne (Coleoptera: Cerambycidae), troisième partie. Mitteilungen aus dem Zoologischen Museum in Berlin 54(1): 3–78. <https://doi.org/10.1002/mmzn.19780540102>
- Breuning S (1982) Diagnoses préliminaires de nouveaux Lamiinae du Muséum national d'Histoire naturelle de Paris [Coleoptera, Cerambycidae]. Annales de la Société Entomologique de France, Paris (N. S.) 18(1): 9–29. <https://doi.org/10.3406/bsef.1960.20510>

- Breuning S, Heyrovský L (1961) Die Himalaja-Cerambyciden im Museum A. Koenig in Bonn. *Bonner Zoologische Beiträge* 1/2(12): 142–144.
- Chou W-I (2004) *The Atlas of Taiwanese Cerambycidae* (2nd edn.). Owl Publishing House, Taipei, 408 pp.
- Gouverneur X (2016) Description d'une nouvelle espèce du genre *Trichohoplorana* Breuning, 1961 du Laos (Coleoptera, Cerambycidae, Lamiinae, Acanthocinini). *Les Cahiers Magellanes (NS)* 23: 72–76.
- Gressitt JL (1951) Longicorn beetles of China. *Longicornia* 2: 1–667.
- Holzschuh C (1989) Beschreibung von 8 neuen Bockkäfern aus Bhutan (Coleoptera, Cerambycidae). *Entomologica Basiliensia* 13: 391–402.
- Holzschuh C (1990) Beschreibung von neuen Bockkäfern aus dem Himalaya (Insecta: Coleoptera, Cerambycidae). *Berichte des Naturwissenschaftlich-Medizinischen Vereins in Innsbruck* 77: 185–197.
- Holzschuh C (2015) Zwei neue Bockkäfer aus Nepal (Insecta: Coleoptera: Cerambycidae). In: Hartmann M, Weipert J (Eds) *Biodiversität und Naturlausstattung im Himalaya V*. Verein der Freunde und Förderer des Naturkundemuseums Erfurt e. V: 471–474.
- Hua L-Z (1982) *A Check List of the Longicorn Beetles of China* (Coleoptera: Cerambycidae). Zhongshan University, Guangzhou, 158 pp.
- Hua L-Z (2002) *List of Chinese Insects. Vol. II*. Zhongshan (Sun Yat-sen) University Press, Guangzhou, 612 pp.
- Hua L-Z, Nara H Saemulson [misspelling of Samuelson] GA, Lingafelter SW (2009) *Iconography of Chinese Longicorn Beetles (1406 Species) in Color*. Sun Yat-sen University Press, Guangzhou, xii, 474 pp.
- Huang G-Q, Li S (2019) Review of the genus *Falsotrachystola* Breuning, 1950 (Coleoptera: Cerambycidae: Lamiinae: Morimopsini). *Zootaxa* 4555(1): 45–55. <https://doi.org/10.11646/zootaxa.4555.1.3>
- Huang G, Liu B, Gouverneur X (2015) Note on the genus *Neacanista* Gressitt, 1940 (Coleoptera: Cerambycidae: Lamiinae: Acanthocinini). *Zootaxa* 3981(4): 553–564. <https://doi.org/10.11646/zootaxa.3981.4.6>
- Huang G-Q, Yan K, Li S (2020) Description of *Pseudoechthistatus rugosus* n. sp. from Yunnan, China (Coleoptera: Cerambycidae: Lamiinae: Lamiini). *Zootaxa* 4747(3): 593–600. <https://doi.org/10.11646/zootaxa.4747.3.12>
- Lazarev MA (2019) Catalogue of Bhutan longhorn beetles (Coleoptera, Cerambycidae). *Humanity space-International Almanac* 8(2): 141–198.
- Löbl I, Smetana A (2010) *Catalogue of Palaearctic Coleoptera. Vol. 6. Chrysomeloidea*. Apollo Books, Stenstrup, 924 pp. <https://doi.org/10.1163/9789004260917>
- Mitono T (1943) Descriptions of some new species and varieties of longicorn-beetles from Taiwan. *Transactions of the Natural History Society of Formosa* 33: 578–588.
- Nakamura S, Makihara H, Saito A (1992) *Check-list of longicorn-beetles of Taiwan*. Hiba Society of Natural History, Shobara, Hiroshima, 126 pp.
- Sama G, Sudre J (2009) New nomenclatural acts in Cerambycidae. II. (Coleoptera). *Bulletin de la Société Entomologique de France, Paris* 114(3): 383–388. <https://doi.org/10.3406/bsef.2009.2751>

- Ślipiński A, Escalona HE (2013) Australian Longhorn Beetles (Coleoptera: Cerambycidae). Vol. 1. Introduction and Subfamily Lamiinae. ABRIS, Canberra & CSIRO Publishing, Melbourne, 504 pp. <https://doi.org/10.1071/9781486300044>
- Švácha P, Lawrence JF (2014) 2.4 Cerambycidae Latreille, 1802. In: Leschen RAB, Beutel RG (Eds) Handbook of zoology, Coleoptera, Beetles. Vol. 3. Morphology and Systematics (Phytophaga). Walter de Gruyter, Berlin, 77–177. <https://doi.org/10.1515/9783110274462.77>
- Tavakilian G, Chevillotte H (2022) Titan: International Database on Worldwide Cerambycidae or Longhorn Beetles. <http://titan.gbif.fr/index.html> [accessed 18 March 2022]
- Weigel A (2006) Checklist and Bibliography of Longhorn Beetles from Nepal (Insecta: Coleoptera: Cerambycidae). In: Hartmann M, Weipert J (Eds) Biodiversität und Naturlausstattung im Himalaya II. Verein der Freunde und Förderer des Naturkundemuseums Erfurt e. V., 495–510.
- Weigel A (2012) Beitrag zur Bockkäferfauna von Arunachal Pradesh (Indien) mit Beschreibung einer neuen Art aus der Gattung *Acalolepta* Pascoe, 1858 (Insecta: Coleoptera: Cerambycidae). In: Hartmann M, Weipert J (Eds), Biodiversität und Naturlausstattung im Himalaya IV. Verein der Freunde und Förderer des Naturkundemuseums Erfurt e. V., 405–411.