

An Introduction to Crossref Nepal

24 April 2023



@CrossrefOrg



Agenda

- An introduction to Crossref - who we are and what we do
- The value and use of metadata for content discovery
- Our Global Equitable Membership (GEM) program
- Setting up independent membership and the title transfer process
- Additional Crossref services for members
- Q&A

About Us





Our mission

Crossref makes research outputs easy to find, cite, link, assess, and reuse.

We're a not-for-profit membership organization that exists to make scholarly communications better.

Crossref Overview



20,000+ members and affiliates

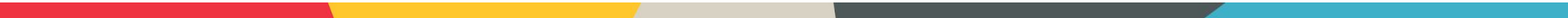
150 countries

144 million+ content items

600 million queries/month

one billion DOI resolutions/month

Why organizations join Crossref

- Connect content with a global network of online scholarly research
 - Create a persistent identifier for each object
 - Improve discoverability of publications through robust metadata
 - Find out who is citing your content
 - Participate in other collaborative services
- 

The value and use of metadata



Members —> Crossref



Basic metadata: titles; author names; ISSN/ISBNs, abstracts, references

Funding information: Funder identifiers, award numbers

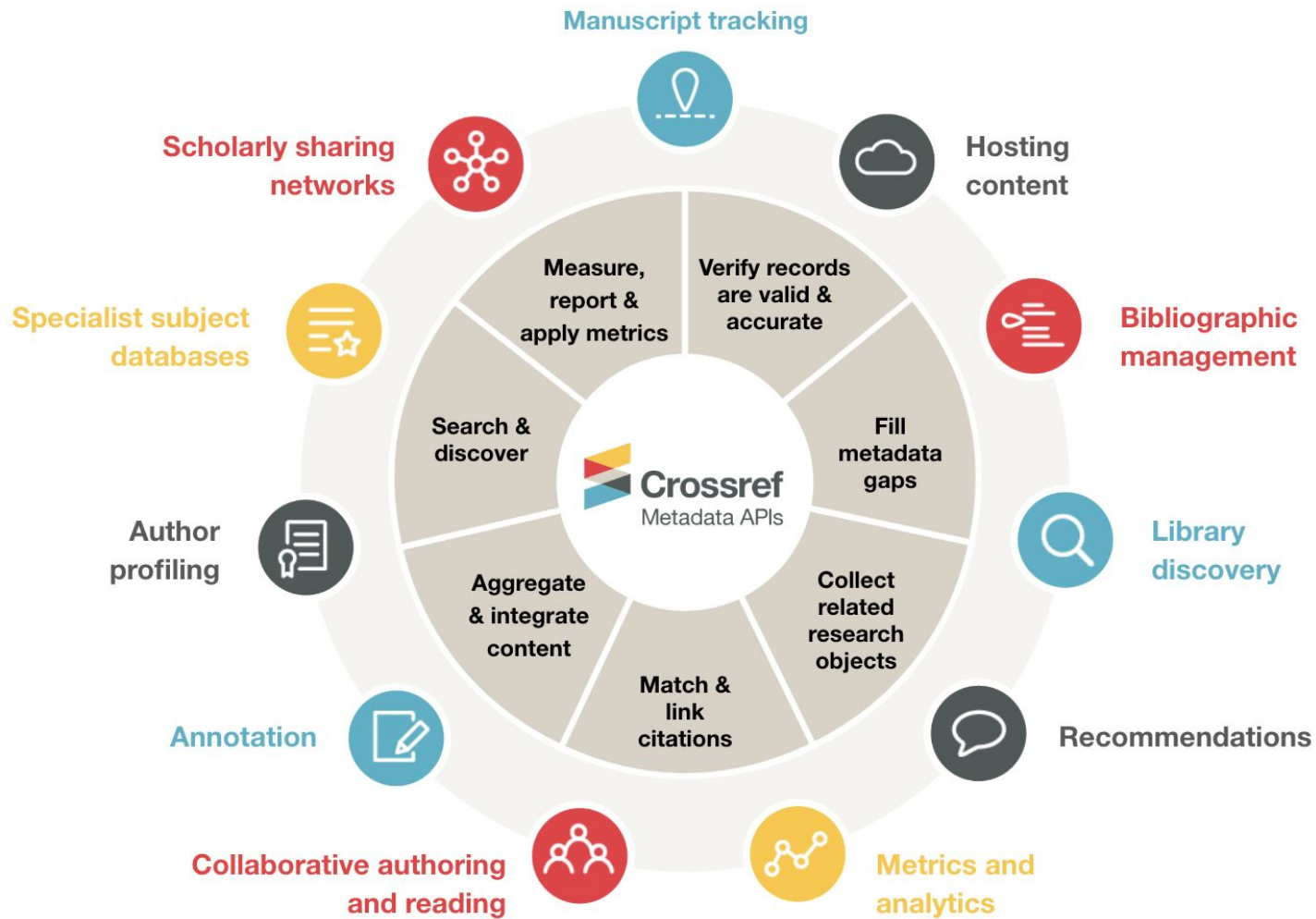
Contributor/Affiliations: ORCID, ROR

License information: License URLs

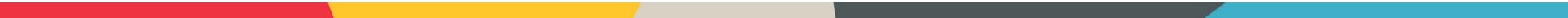
Full-text URLs: e.g. for Similarity Check

Crossmark: updates, retractions, corrections
ORCID IDs

Recently: Peer Review reports, relationships, links to related data, Grant identifiers



Metadata enables:

- Discoverability
 - Reproducibility
 - Research and editorial integrity
 - Reporting and assessment
- 

Global Equitable Membership (GEM) Program

Global Equitable Membership (GEM) program



Crossref
**Global
Equitable
Membership**

From Afghanistan to Zambia...

Announcing the new GEM Program, so that publishers in 58 countries have one less thing to worry about.

Afghanistan Bangladesh Benin Bhutan Burkina Faso Burundi Cambodia Central African Republic Chad Comoros
Democratic Republic of the Congo Cote d'Ivoire Djibouti Eritrea Ethiopia Gambia Ghana Guinea Guinea-Bissau Guyana
Haiti Honduras Kiribati Kosovo Kyrgyzstan Laos Lesotho Liberia Madagascar Malawi Maldives Mali Marshall Islands
Mauritania Micronesia Mozambique Myanmar Nepal Nicaragua Niger Rwanda Samoa Sao Tome and Principe Senegal Sierra
Leone Solomon Islands Somalia South Sudan Sudan Tajikistan Tanzania Togo Tonga Tuvalu Uganda Vanuatu Yemen Zambia

crossref.org/gem

What does GEM cover?

Yes

- Annual member fee
- Content registration fees

No

- Similarity Check fees
- Metadata plus fee

Getting Started as a Member

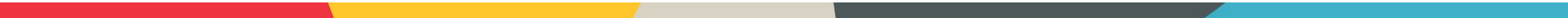


Become a member

<https://www.crossref.org/membership/>

First Steps

We send you:

- Your unique prefix
 - Login and instructions to set your password
 - Review of the different methods for registering your content
- 

What content types can I register at Crossref?

Journals

Books

Book chapters

Conference proceedings

Datasets

Dissertations

Reports

Standards

Posted content (preprints)

Peer reviews

Grants

Title transfers for new accounts

- Obtain permission for the transfer from existing owner
- The existing DOIs will not change
 - Just update the metadata if the URL has changed
- As the new publisher you will be:
 - Updating existing DOI metadata
 - Registering new DOIs with your new prefix
 - Receiving reports and notifications from Crossref

How to register content

- OJS Crossref plugin
(<https://docs.pkp.sfu.ca/crossref-ojs-manual/en/config>)
- Manual web deposit form
(<https://apps.crossref.org/webdeposit>)
- Upload XML file
(<https://doi.crossref.org>)

Web deposit form

<https://apps.crossref.org/webDeposit/>

webDeposit Ver. 1.53

These forms allow you to enter metadata and register DOIs. Review the [help documentation](#) for details.

Note: Your Crossref username and password will be required at the end of this process to submit data to the system. Please insure your browser allows JavaScript so that the data validation will function.

Step 1: Select Data Type

Data Type Selection

Select Data Type: Journal Book Conference Proceedings Report Dissertation CrossMark Policy page
 NLM File **BETA** Supplemental-Metadata Upload **BETA**

Step 2: Identify the Journal

Journal information

Title
Abbr.
Journal DOI+
Journal URL
Print ISSN Elect ISSN Journal DOI and/or ISSN required
Volume Issue
Issue DOI
Issue URL

Publication dates
note: use numerical values (YYYY, MM, DD)

Type: print
*Year Month: Day:

Type: online
*Year Month: Day:

* a minimum of one publication year is required

+ complete Title, Abbr., Journal DOI/URL and/or ISSN fields for title-level Journal deposit

Using OJS

- Enable DOI plugin

Settings > Website > Plugins

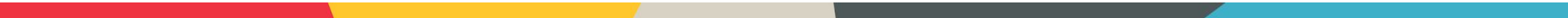
Under Installed Plugins > Public Identifier Plugins

- Enable Crossref plugin

Tools > Import/Export > Crossref XML Export Plugin

Additional services

Services for our members:

- Reference linking
 - Cited-by
 - Similarity Check
 - Crossmark
- 

Reference linking

Reference linking enables researchers to follow a link from the reference list to other full-text documents, helping them to make connections and discover new things.

<https://www.crossref.org/services/reference-linking/>

Cited-by

Cited-by provides an overview of the publications that have cited a piece of content helping to build a picture of how research has been received by the community.

<https://www.crossref.org/services/cited-by/>



Similarity Check

Similarity Check offers publishers with a way to actively engage in efforts to prevent plagiarism, using a service provided by Crossref and powered by iThenticate

<https://www.crossref.org/services/similarity-check/>

Crossmark

Crossmark provides a cross-platform way for readers to quickly discover the status of a research output along with additional metadata related to the editorial process

<https://www.crossref.org/services/crossmark/>

In Conclusion...



Thank-you

- Documentation: <https://www.crossref.org/documentation/>
- Email support@crossref.org
- Community Forum: <https://community.crossref.org>
- Webinars & events: <https://www.crossref.org/events/>



Crossref



@CrossrefOrg