

**Neural Network Generated Maps of the Bahamian Archipelago**

Great Abaco Island . . . . . 2

North Andros Island . . . . . 4

South Andros Island . . . . . 5

Turks and Caicos . . . . . 6

Cat Island . . . . . 7

Eleuthera . . . . . 8

Great Exuma . . . . . 9

Grand Bahama . . . . . 10

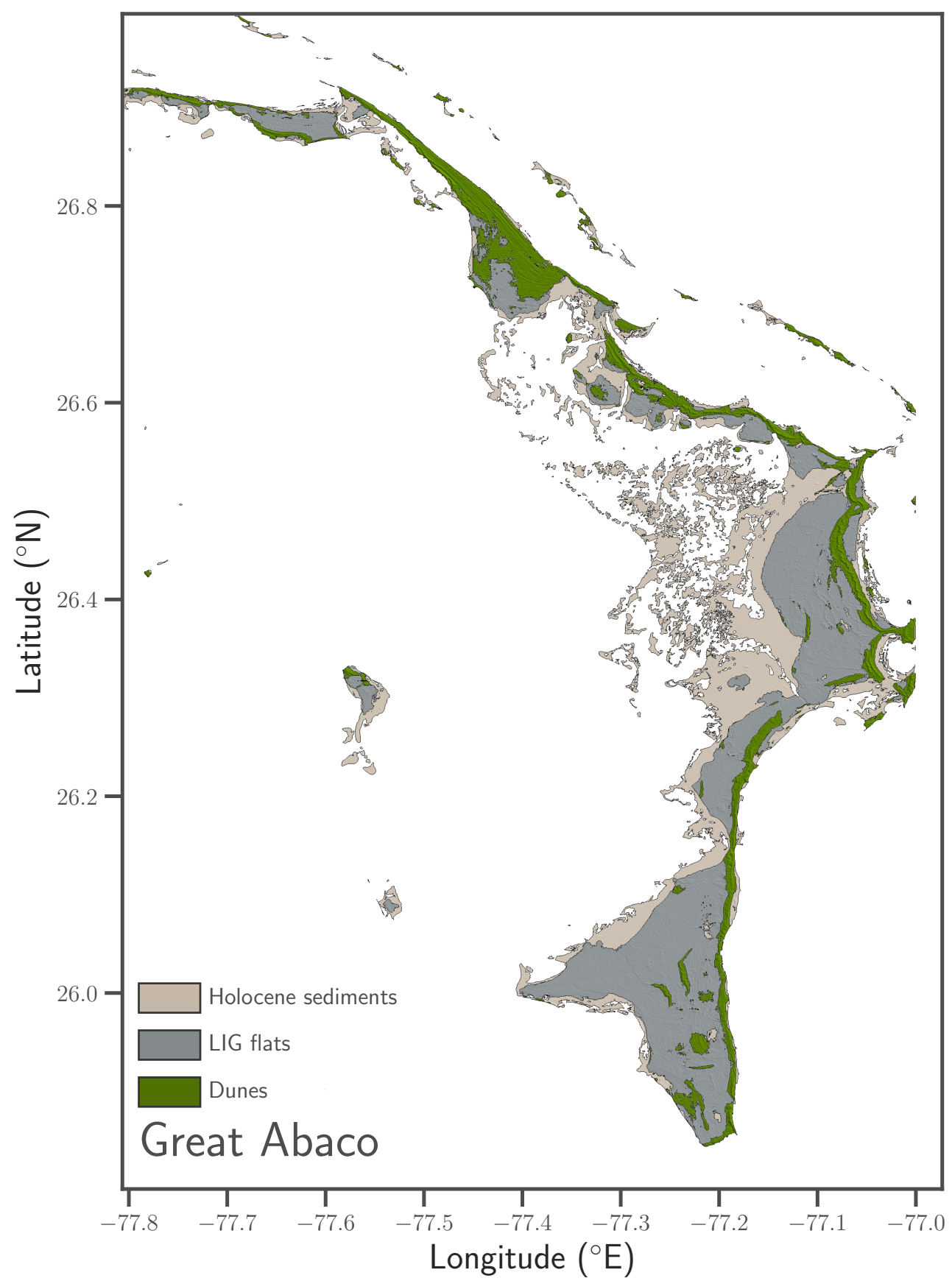
Great Inagua . . . . . 11

Long Island . . . . . 12

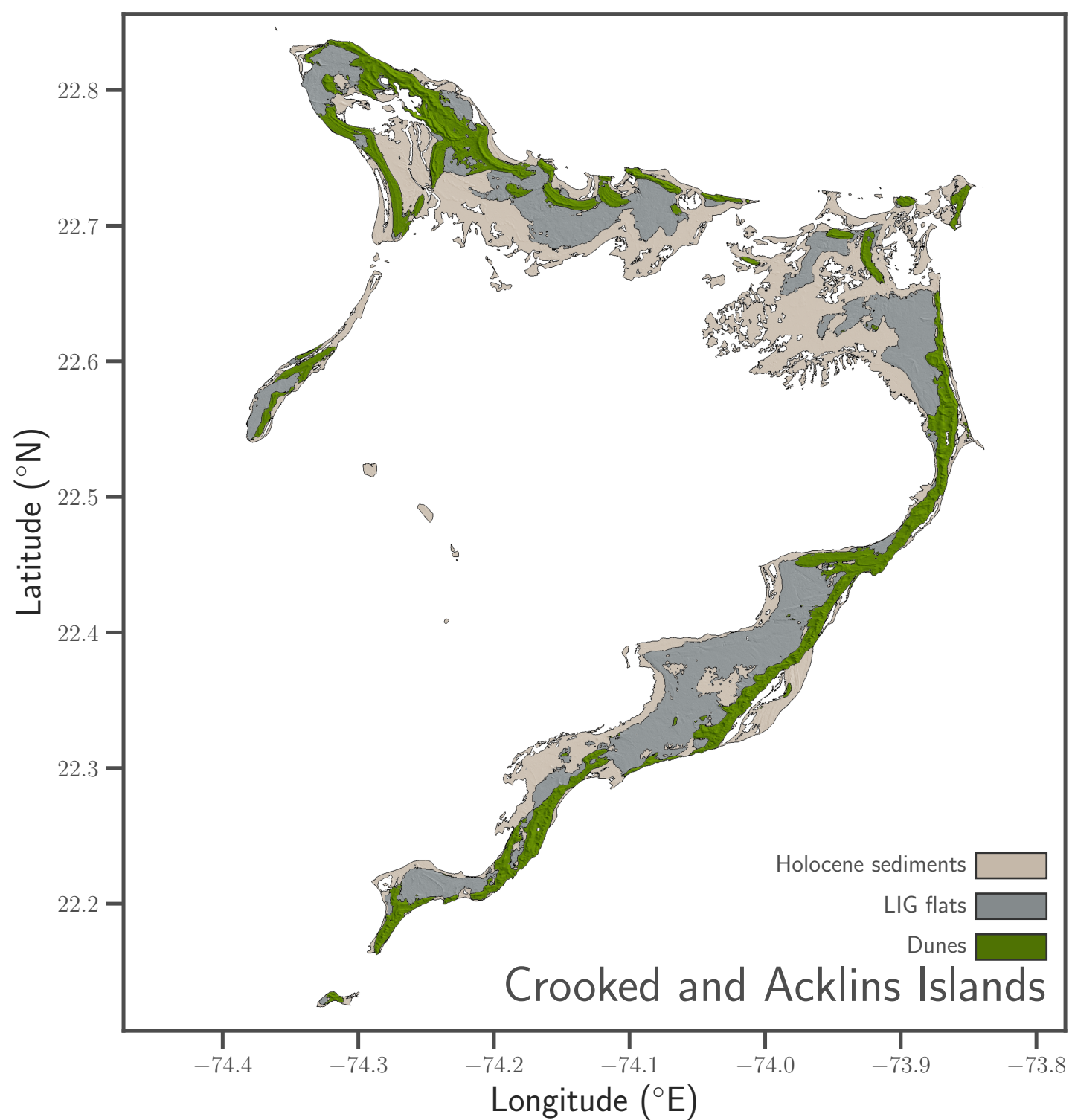
Mayaguana . . . . . 13

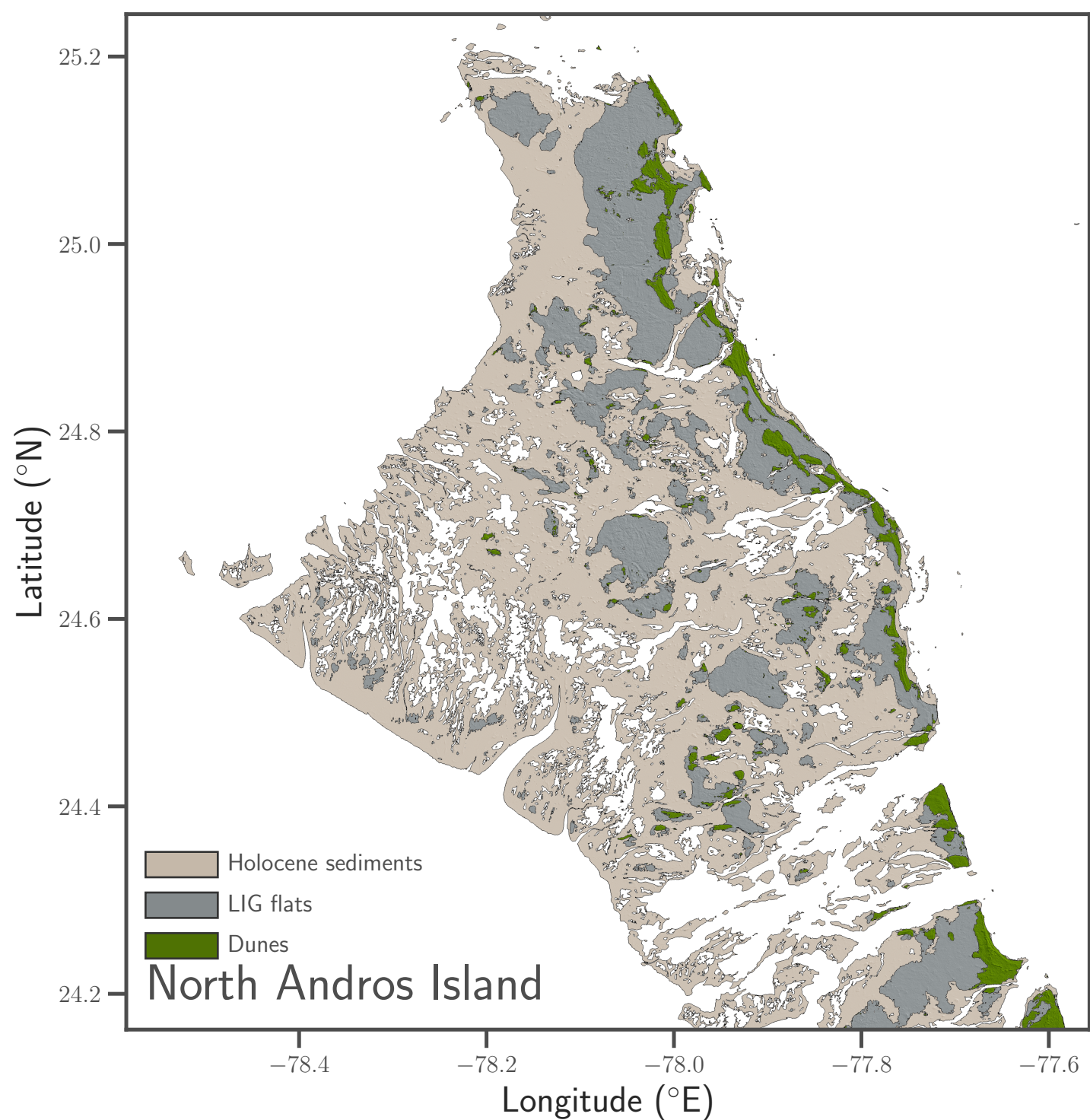
New Providence Island . . . . . 14

San Salvador Island . . . . . 15









Latitude (°N)

24.1

24.0

23.9

23.8

23.7

Holocene sediments

LIG flats

Dunes

South Andros Island

Longitude (°E)

-78.0

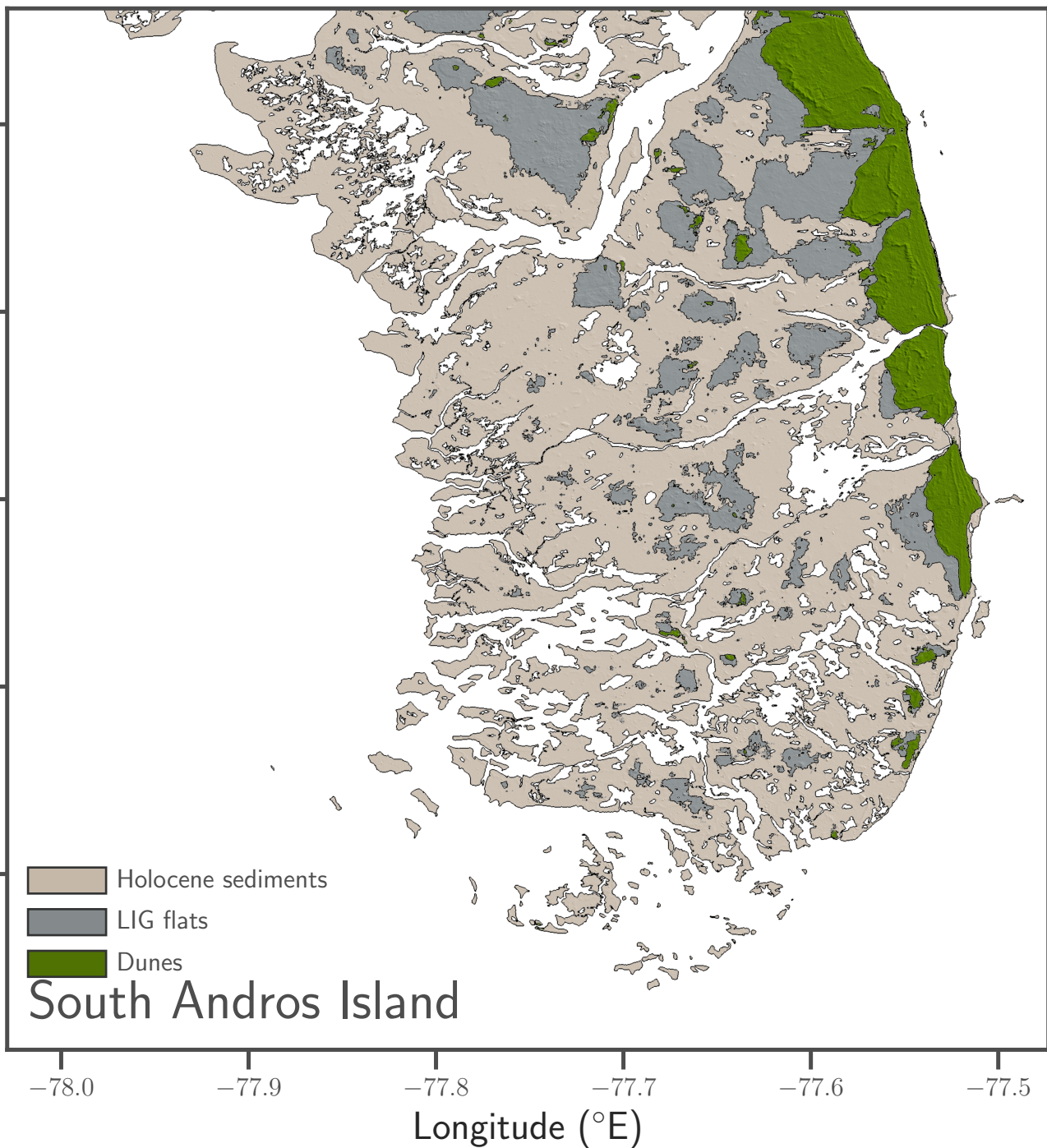
-77.9

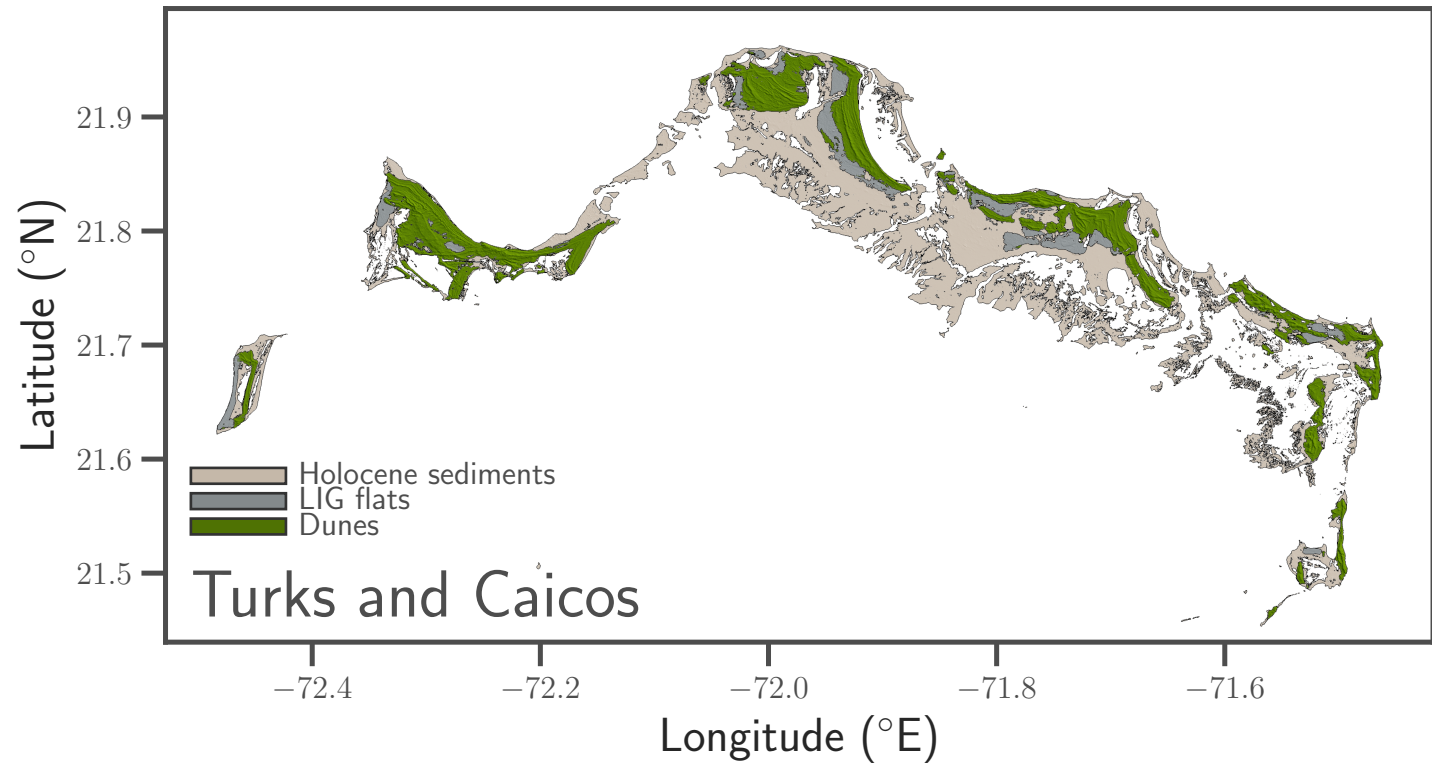
-77.8

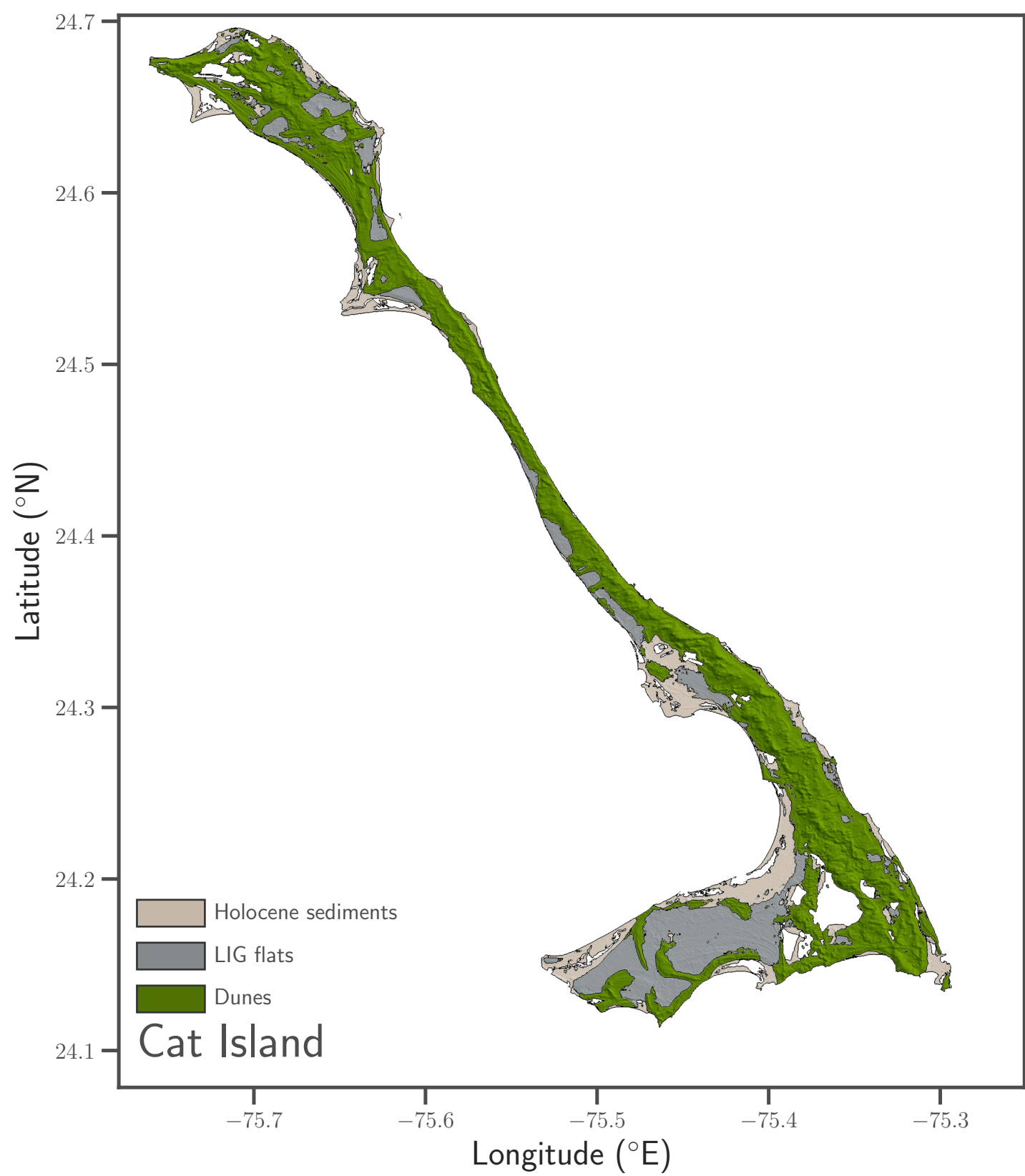
-77.7

-77.6

-77.5









# Eleuthera

Holocene sediments

LIG flats

Dunes

Latitude (°N)

Longitude (°E)

25.4

25.2

25.0

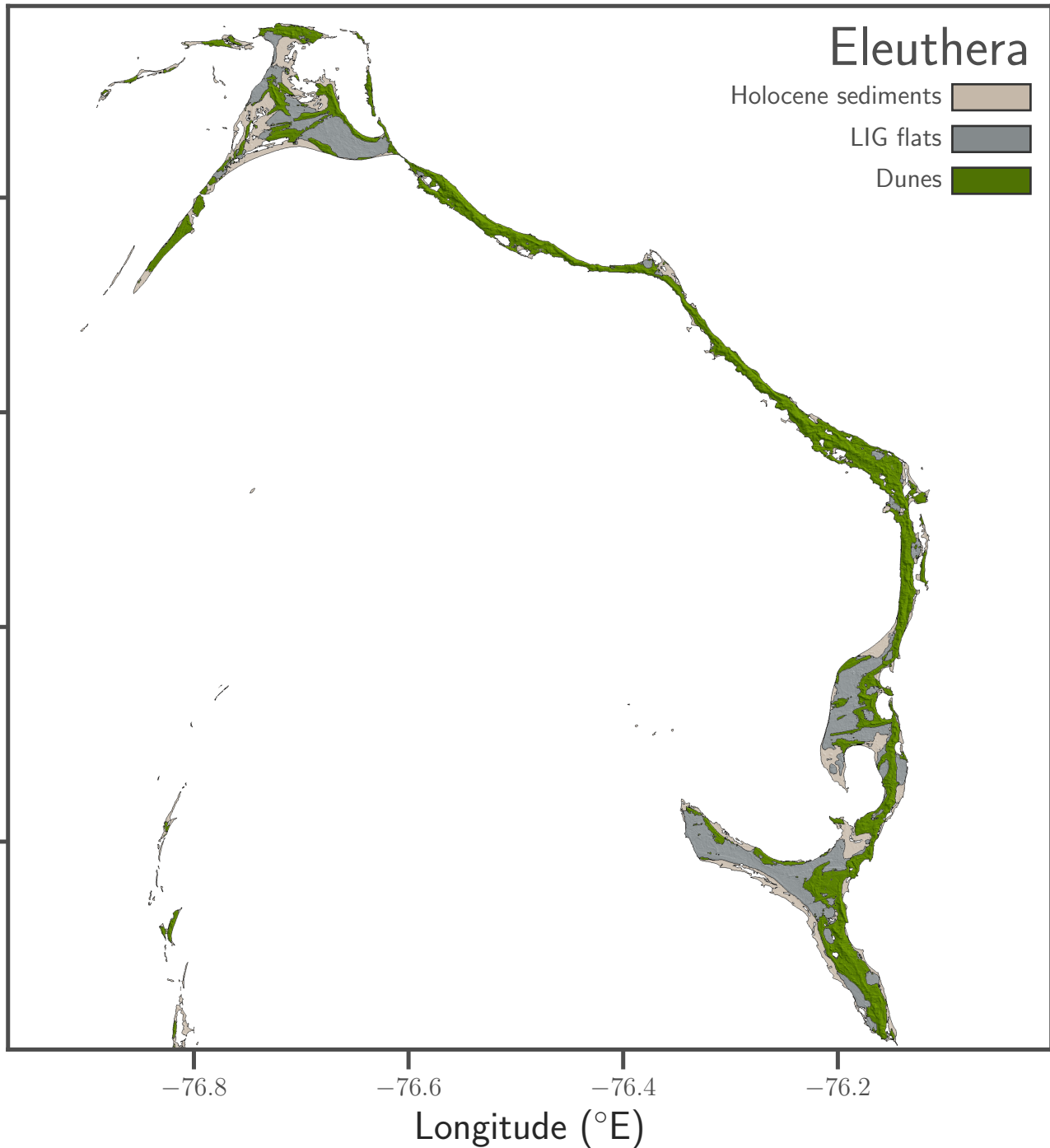
24.8

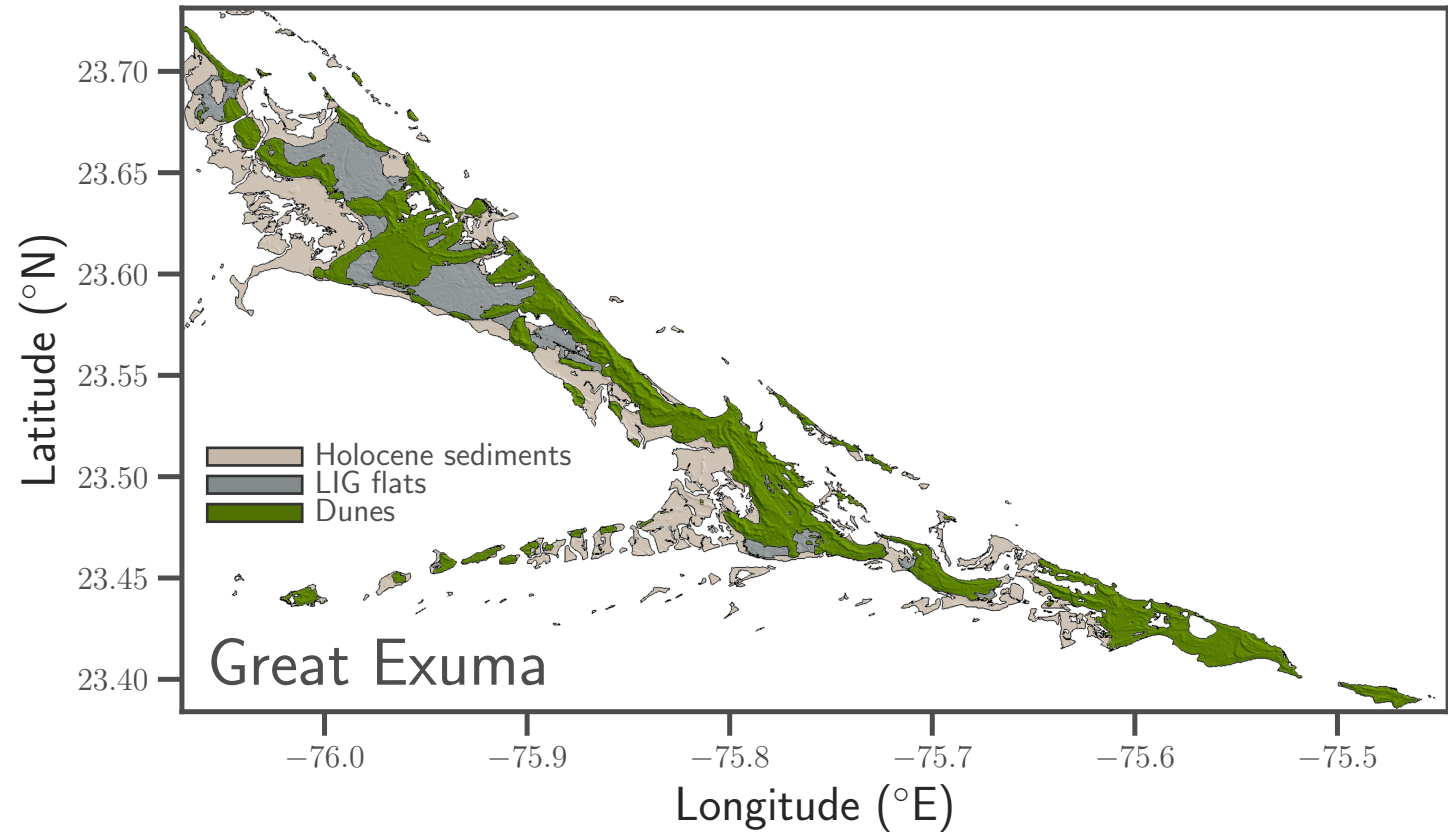
-76.8

-76.6

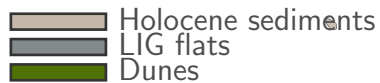
-76.4

-76.2





# Grand Bahama



26.9

26.8

26.7

26.6

26.5

-78.8

-78.6

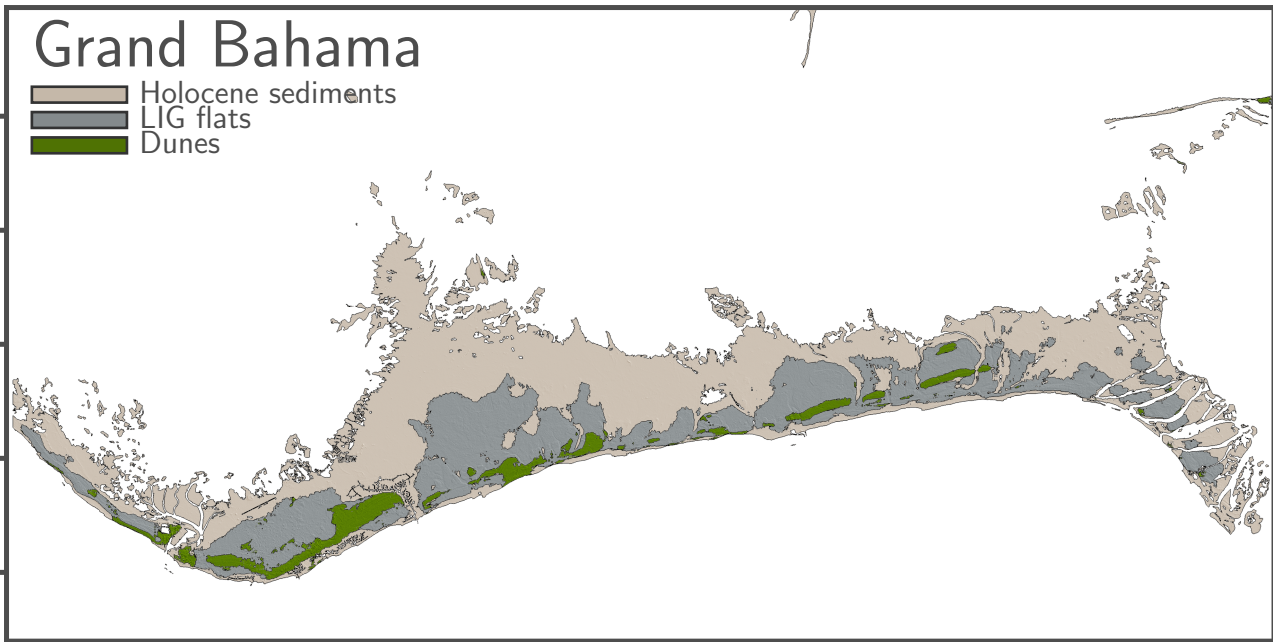
-78.4

-78.2

-78.0

Longitude ( $^{\circ}$ E)

Latitude ( $^{\circ}$ N)



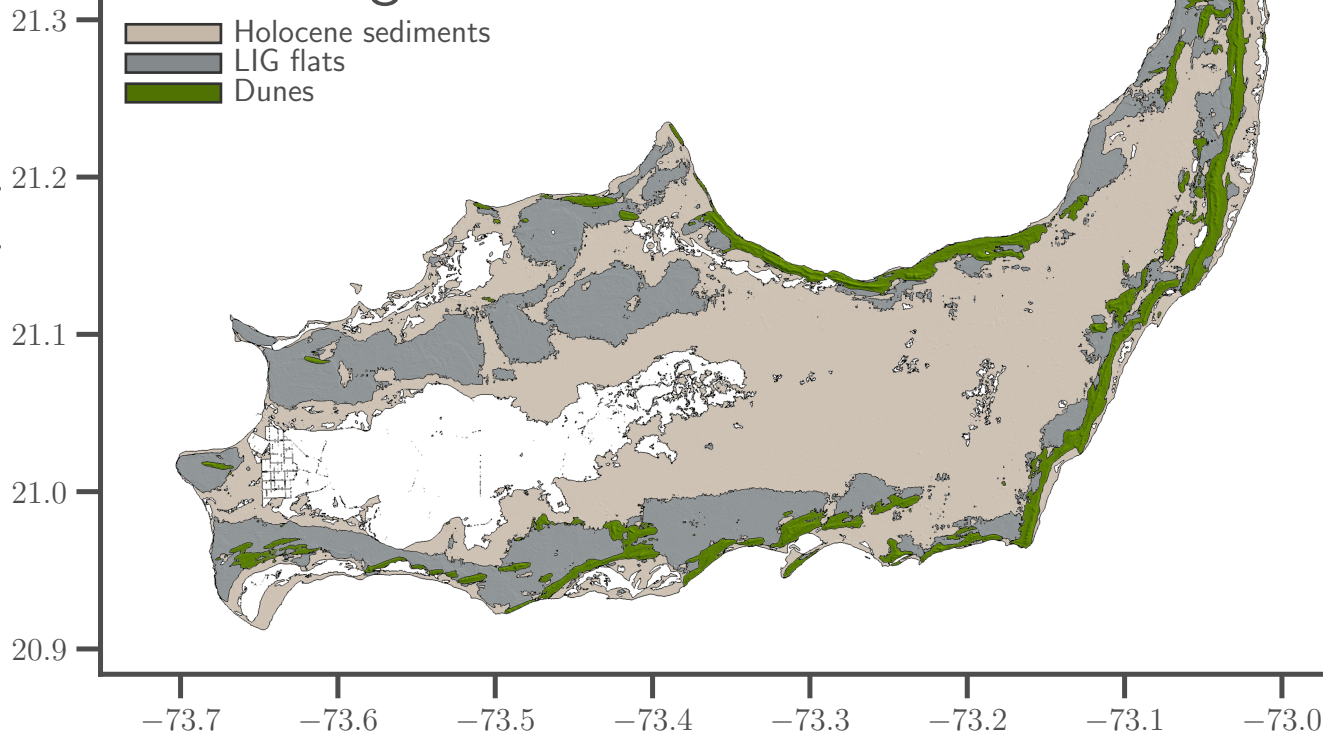


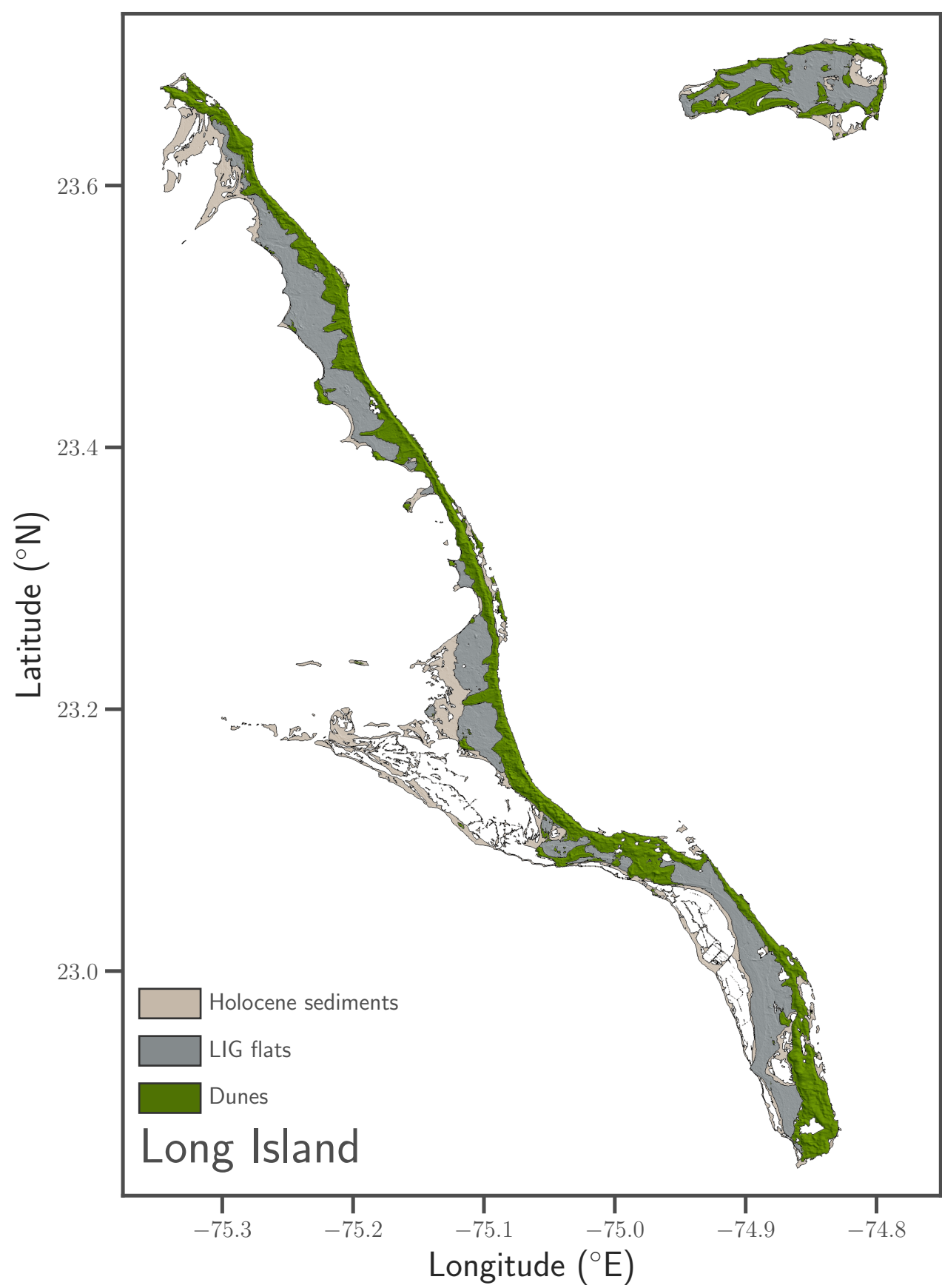
# Great Inagua

- Holocene sediments
- LIG flats
- Dunes

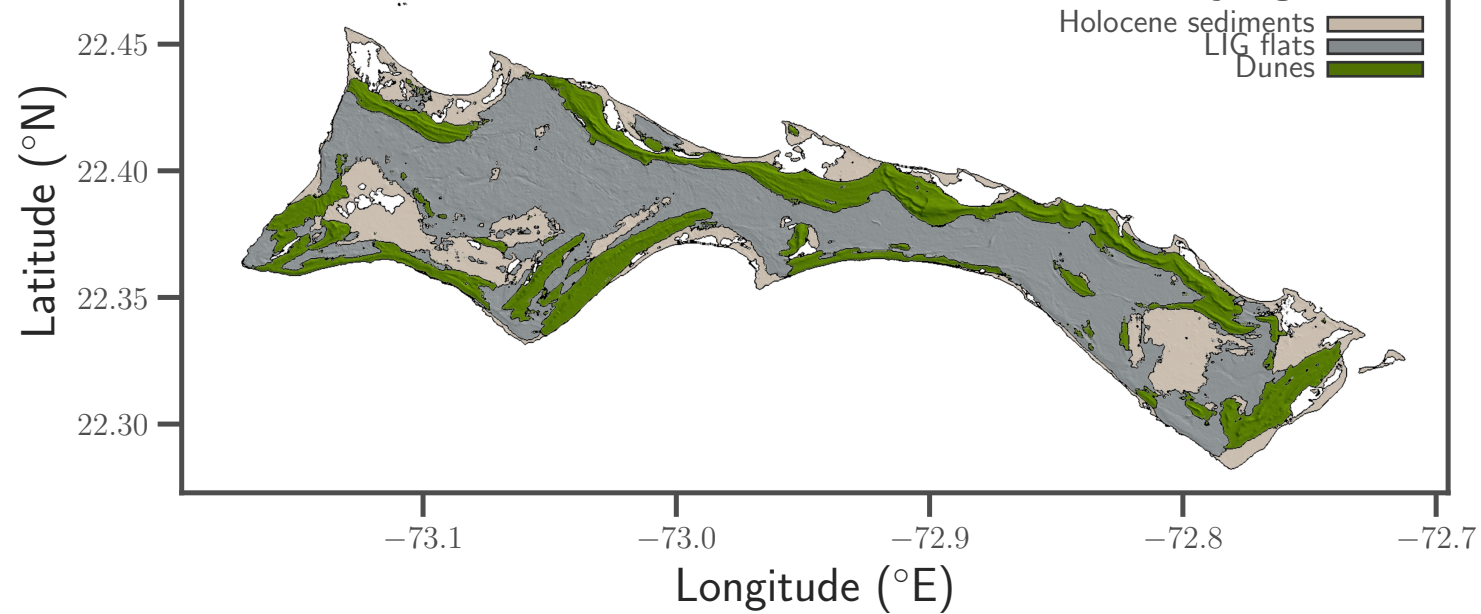
Latitude ( $^{\circ}$ N)

Longitude ( $^{\circ}$ E)





# Mayaguana



# New Providence Island

- Holocene sediments
- LIG flats
- Dunes

Latitude (°N)

25.125  
25.100  
25.075  
25.050  
25.025  
25.000  
24.975  
24.950

-77.55

-77.50

-77.45

-77.40

-77.35

-77.30

-77.25

Longitude (°E)

