

re3data.org  
REGISTRY OF RESEARCH DATA REPOSITORIES

NFDI ToolTalk

🔍 2023

NFDI ToolTalk:

**re3data – The place to be for research data repositories in NFDI**

April 17, 2023, 4 p.m.

[Nina Weisweiler](#)

Helmholtz Association, Helmholtz Open Science Office / Helmholtz Metadata Collaboration / re3data COREF

<https://doi.org/10.5281/zenodo.7837286>

**Global Registry**  
of research data  
repositories...

**re3data.org**  
REGISTRY OF RESEARCH DATA REPOSITORIES

Search...

Search

...across **all**  
**research**  
**disciplines**

... presents **repositories** for the  
**permanent storage** and **access** of  
research data sets to researchers, funding  
bodies, publishers, scholarly institutions,  
and other service providers.

...promotes a culture of  
**sharing, increased access**  
**and better visibility** of  
research data.

# Networks and integrations

re3data is a **central reference point and metadata source** for other service providers on a global scale:

- [OpenAIRE's Open Science Observatory](#)
- [European Open Science Monitor](#)
- [F-UJI Automated FAIR Data Assessment Tool](#)
- [DARIAH-EU Data Deposit Recommendation Service](#)
- [DataCite Commons](#)
- ...

# Connected via the EOSC Marketplace

The screenshot displays the EOSC Marketplace interface. At the top, there is a navigation bar with the European Open Science Cloud logo and links for 'About EOSC', 'Browse Marketplace', 'Providers Hub', 'Monitoring', 'Status', 'Contact us', and 'Login'. Below this is a dark blue search bar with a left arrow and the text 'Go to Search'. The main content area features a card for 're3data - registry of research data repositories', labeled as a 'HORIZONTAL SERVICE'. The card includes the re3data logo, a description, organization information, a rating of 0.0/5, and buttons for 'Access the service', 'Add to comparison', and 'Add to favourites'. It also indicates 'FULLY OPEN ACCESS' and provides links for 'Webpage', 'Helpdesk e-mail', and 'Ask a question about this service?'. A bottom navigation bar contains 'ABOUT', 'DETAILS', and 'REVIEWS (0)'.

EUROPEAN OPEN SCIENCE CLOUD

About EOSC Browse Marketplace Providers Hub Monitoring Status Contact us Login

← Go to Search

**re3data - registry of research data repositories** HORIZONTAL SERVICE

re3data

Find research data repositories and their metadata on a global scale.

Organisation: Karlsruhe Institute of Technology  
Provided by: KIT - Library

☆☆☆☆☆ (0.0 / 5) 0 reviews  Add to comparison  
 Add to favourites

Access the service

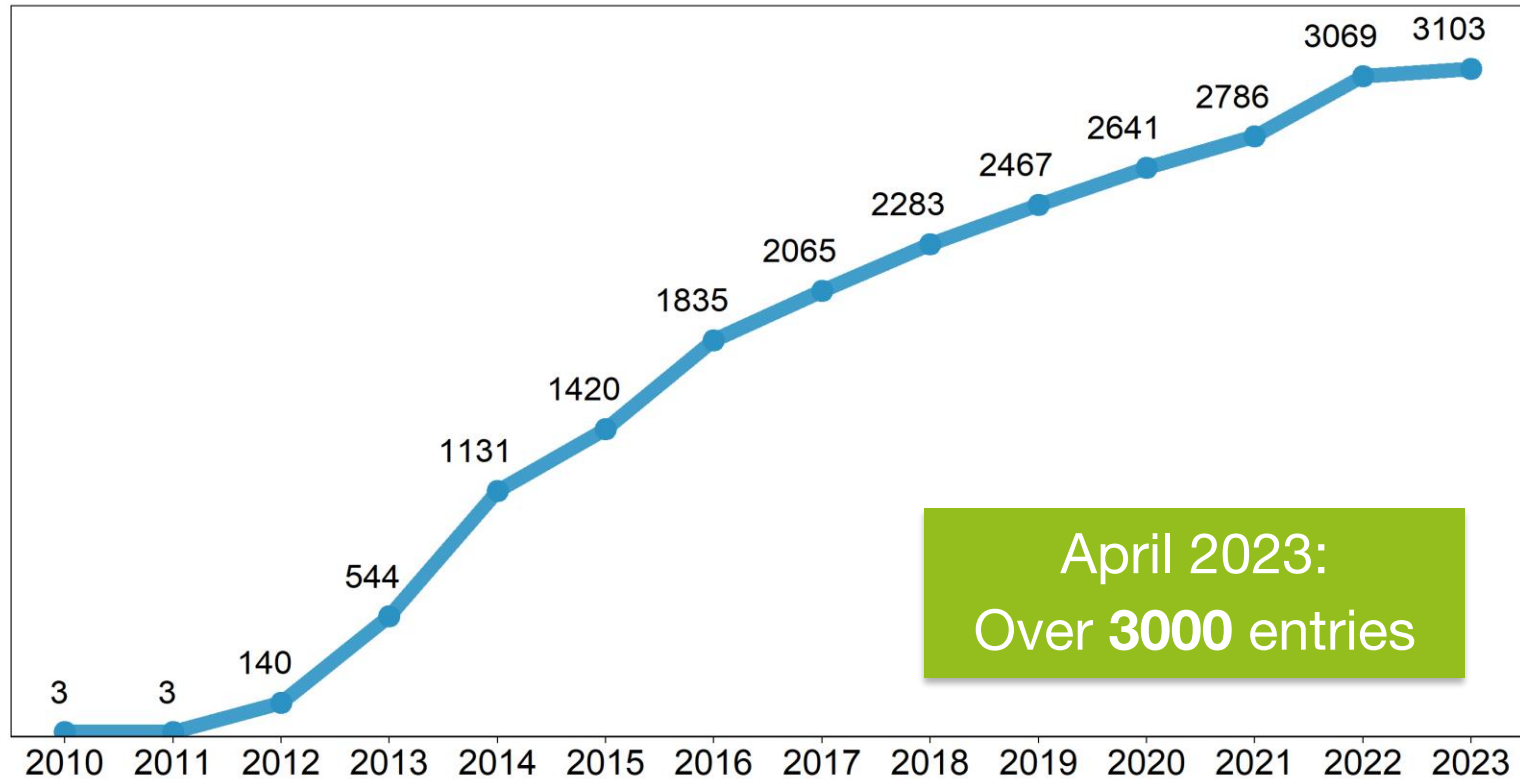
FULLY OPEN ACCESS

→ Webpage → Helpdesk e-mail Ask a question about this service?

ABOUT DETAILS REVIEWS (0)

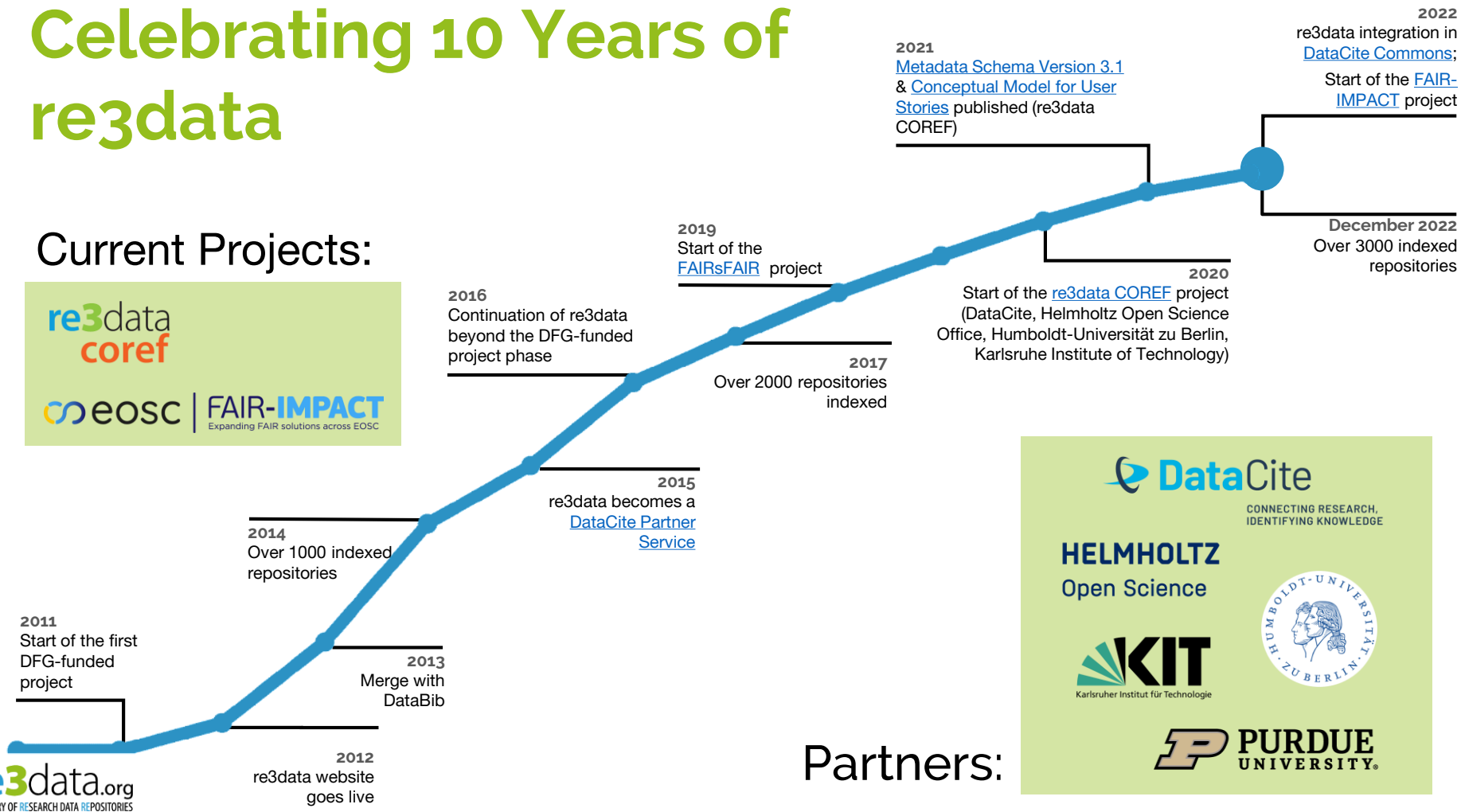
re3data is a global registry of research data repositories that covers research data repositories from different academic disciplines. It includes repositories that enable permanent storage of and access to data sets to researchers, funding bodies, publishers, and scholarly institutions. re3data promotes a culture of sharing, increased access and better visibility of research data.

# Number of repositories indexed in re3data per year:



# Celebrating 10 Years of re3data

## Current Projects:



## Partners:



# Further develop & enhance re3data:



## Conceptual Service Model

- Embed the registry within the research community and infrastructure landscape to meet the emerging needs for a trusted repository reference.

## Metadata Schema

- Revision and enhance the re3data metadata schema for the description of research data repositories.

## Technical Infrastructure

- Implement new features and the updated metadata schema.
- Provide the necessary technical infrastructure and services.

## Quality & Transparency

- Conduct a comprehensive study on quality assurances at research data repositories to improve re3data metadata information.
- Improve re3data metadata quality, trust and transparency.

## Community Building

- Extensive outreach activities, networking and policy development.



DataCite

**HELMHOLTZ**  
Open Science



# EU Projects with re3data participation



## 2019-2022:

Tools for finding and selecting **FAIR enabling repositories** to researchers and other stakeholders

Integration of repository information into **DataCite Commons**

- re3data as a metadata source
- Linking repositories with other entities of the PID graph



## Launched in Summer 2022:

Practical implementation of the FAIR principles across all domains through FAIR-enabling practices, tools and services.

More at: <https://fair-impact.eu/>



# What is a “repository” in re3data?

- We refer to all re3data entries as “repositories”:
  - Repositories in re3data are defined as “[...] a subtype of a sustainable information infrastructure providing long-term storage of and access to research data.” ([Metadata Schema for the Description of Research Data Repositories](#), Version 3.1)
- The re3data registration policy is intentionally inclusive to cover a broad range of infrastructures for research data.

The screenshot displays the re3data.org interface for the repository 'Forschungsdatenzentrum im Kraftfahrt-Bundesamt'. The page includes a search bar, navigation links (Search, Browse, Suggest, Resources, Contact), and repository details. The details are organized into sections: General, Institutions, Terms, and Standards. The 'General' section is active, showing the repository name, additional name (FDZ im KBA), URL, and subject categories. The description provides context about the statistics pages of the Kraftfahrt-Bundesamt (KBA). The contact information, content types, certificates, and standards, and keywords are also listed. At the bottom, there are links for 'Back to search', 'Submit a change request', and 'Get a badge', along with a citation for the re3data.org record.

re3data.org Search Browse Suggest Resources Contact

Repository details

### Forschungsdatenzentrum im Kraftfahrt-Bundesamt

General Institutions Terms Standards

Name of repository **Forschungsdatenzentrum im Kraftfahrt-Bundesamt**

Additional name(s) FDZ im KBA

Repository URL [https://www.kba.de/DE/Statistik/Forschungsdatenzentrum/forschungsdatenzentrum\\_node.html](https://www.kba.de/DE/Statistik/Forschungsdatenzentrum/forschungsdatenzentrum_node.html)

Subject(s) **Traffic and Transport Systems, Logistics** **Systems Engineering**  
**Computer Science, Electrical and System Engineering** **Engineering Sciences**  
**Human Factors, Ergonomics, Human-Machine Systems**

Description The statistics pages of the Kraftfahrt-Bundesamt (KBA) provide an overview of official facts and figures relating to motor vehicles and their users. The data on this page are continuously updated. Publications generally appear as annual statistics. In addition to this, we provide monthly results relating to new registrations and changes of ownership in Germany, as well as information relating to road haulage with German vehicles. The currently provisionally accredited research data center of the Kraftfahrt-Bundesamt extends the data portfolio of the official register data and initially provides anonymised microdata for access to the driving fitness register (FAER). Statistics published by the KBA are available exclusively in German.

Contact [fdz@kba.de](mailto:fdz@kba.de)

Content type(s) **Standard office documents** **Plain text** **Scientific and statistical data formats**

Certificates and Standards **Rat für Sozial- und Wirtschaftsdaten**

Keyword(s) **Register of Driver Fitness - Fahrzeugsregister - FAER** **drivers** **driving licenses** **motor vehicles**  
**road haulage** **tachograph cards** Search with keyword "driving licenses"

Repository type(s) disciplinary

Research data repository language(s) German

Data and/or service provider data provider

[Back to search](#) [Submit a change request](#) [Get a badge](#)

Cite this re3data.org record:  
re3data.org: Forschungsdatenzentrum im Kraftfahrt-Bundesamt; editing status 2019-11-08; re3data.org - Registry of Research Data Repositories. <http://doi.org/10.17616/R31NUMNI> last accessed: 2022-10-26

# Registration Policy

Search

Browse ▾

Suggest

Resources ▾

Contact

## re3data.org Registration Policy

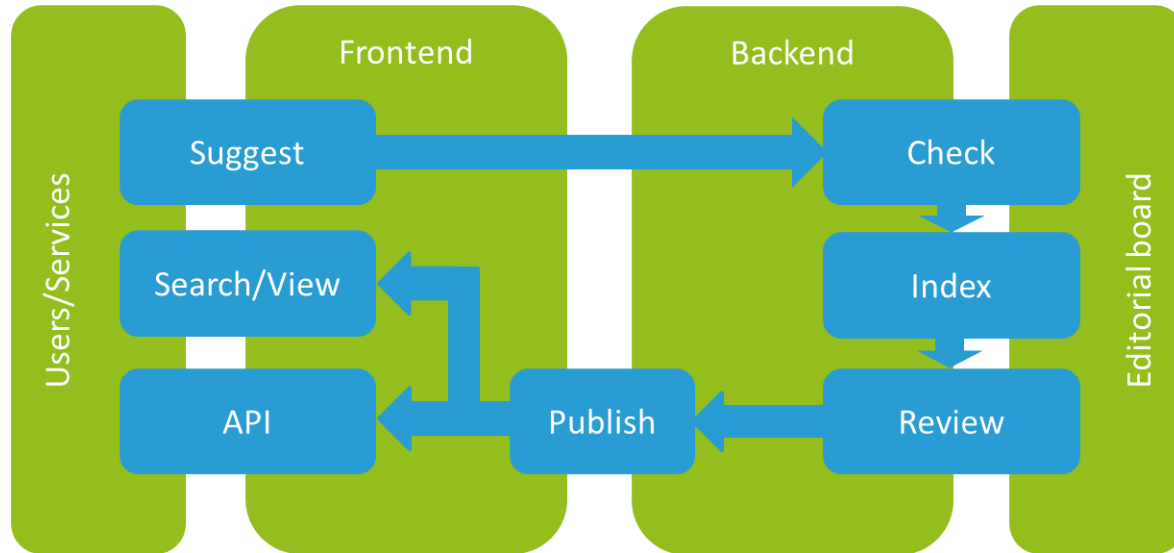
To be registered in re3data.org a research data repository must

- be run by a legal entity, such as a sustainable institution (e.g. library, university)
- clarify access conditions to the data and repository as well as the terms of use
- **have focus on research data**



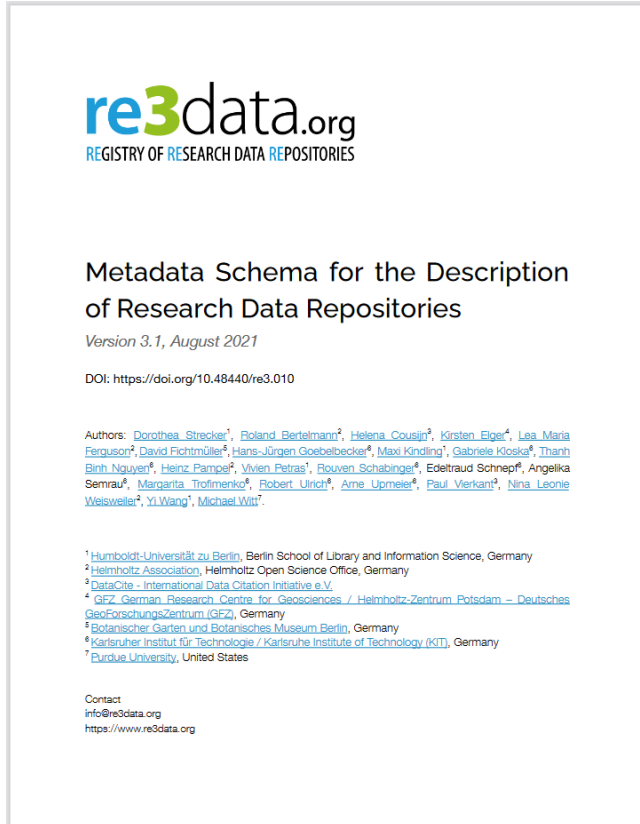
A research data repository is a subtype of a sustainable information infrastructure which provides long-term storage and access to research data that is the basis for a scholarly publication. Research data means information objects generated by scholarly projects for example through experiments, measurements, surveys or interviews.

# Editorial Workflow



Workflow for new repository suggestions and change requests for re3data

# re3data Metadata Schema



**re3data.org**  
REGISTRY OF RESEARCH DATA REPOSITORIES

Metadata Schema for the Description  
of Research Data Repositories

Version 3.1, August 2021

DOI: <https://doi.org/10.48440/re3.010>

Authors: [Dorothea Strecker](#)<sup>1</sup>, [Roland Bertelmann](#)<sup>2</sup>, [Helena Cousijn](#)<sup>3</sup>, [Kirsten Elger](#)<sup>4</sup>, [Lea Maria Ferguson](#)<sup>5</sup>, [David Fichtmüller](#)<sup>6</sup>, [Hans-Jürgen Goebelbecker](#)<sup>6</sup>, [Maxi Knöding](#)<sup>6</sup>, [Gabriele Klosska](#)<sup>6</sup>, [Thanh Binh Nauer](#)<sup>6</sup>, [Heinz Pampol](#)<sup>6</sup>, [Vivien Petras](#)<sup>6</sup>, [Blouven Schabinger](#)<sup>6</sup>, [Edeltraud Schnepf](#)<sup>6</sup>, [Angelika Semrau](#)<sup>6</sup>, [Marqarta Trofimenko](#)<sup>6</sup>, [Robert Ulrich](#)<sup>6</sup>, [Arne Upmeyer](#)<sup>6</sup>, [Paul Verkant](#)<sup>6</sup>, [Nina Leonie Weisweiler](#)<sup>6</sup>, [Yi Wang](#)<sup>7</sup>, [Michael Witt](#)<sup>7</sup>.

<sup>1</sup>Humboldt-Universität zu Berlin, Berlin School of Library and Information Science, Germany  
<sup>2</sup>Helmholtz Association, Helmholtz Open Science Office, Germany  
<sup>3</sup>DataCite - International Data Citation Initiative e.V.  
<sup>4</sup>GFZ German Research Centre for Geosciences / Helmholtz-Zentrum Potsdam – Deutsches GeoForschungsZentrum (GFZ), Germany  
<sup>5</sup>Botanischer Garten und Botanisches Museum Berlin, Germany  
<sup>6</sup>Karlsruher Institut für Technologie / Karlsruhe Institute of Technology (KIT), Germany  
<sup>7</sup>Purdue University, United States

Contact  
[info@re3data.org](mailto:info@re3data.org)  
<https://www.re3data.org>

## 42 Properties on...

- General information
- Responsibilities
- Policies
- Legal aspects
- Technical standards
- Quality standards
- DOI for repository descriptions
- Since 2020: ROR IDs for institutions

## Version 3.1 of the Metadata Schema:

<https://www.re3data.org/schema>



# General

- Additional name(s)
- URL
- Subject(s)
- Description
- Contact information
- Content type(s)
- Certificates & Standards
- Keyword(s)
- Repository identifier(s)
- Size
- Repository type(s)
- Mission statement URL
- Repository language(s)
- Provider type

Repository details



## Swedish National Data Service

General	Institutions	Terms	Standards
Name of repository	Swedish National Data Service		
Additional name(s)	SND Svensk Nationell Datatjänst		
Repository URL	<a href="https://snd.gu.se/en">https://snd.gu.se/en</a>		
Subject(s)	<a href="#">Humanities and Social Sciences</a> <a href="#">Life Sciences</a> <a href="#">Natural Sciences</a> <a href="#">Engineering Sciences</a> <a href="#">Humanities</a> <a href="#">Social and Behavioural Sciences</a> <a href="#">Biology</a> <a href="#">Medicine</a> <a href="#">Agriculture, Forestry, Horticulture and Veterinary Medicine</a> <a href="#">Chemistry</a> <a href="#">Physics</a> <a href="#">Mathematics</a> <a href="#">Geosciences (including Geography)</a> <a href="#">Engineering Sciences</a>		
Description	Swedish National Data Service (SND) is a research data infrastructure designed to assist researchers in preserving, maintaining, and disseminating research data in a secure and sustainable manner. The SND Search function makes it easy to find, use, and cite research data from a variety of scientific disciplines. Together with an extensive network of almost 40 Swedish higher education institutions and other research organisations, SND works for increased access to research data, nationally as well as internationally.		
Contact	<a href="https://snd.gu.se/en/contact">https://snd.gu.se/en/contact</a> snd@gu.se		
Content type(s)	<a href="#">Scientific and statistical data formats</a> <a href="#">Images</a> <a href="#">Raw data</a> <a href="#">Databases</a> <a href="#">Audiovisual data</a> <a href="#">Plain text</a> <a href="#">Structured text</a> <a href="#">Archived data</a> <a href="#">Source code</a> <a href="#">other</a>		
Certificates and Standards	CoreTrustSeal		
Keyword(s)	<a href="#">DOI</a> <a href="#">FAIR</a> <a href="#">environmental data</a> <a href="#">geospatial data</a> <a href="#">language data</a> <a href="#">longitudinal data</a> <a href="#">multidisciplinary</a> <a href="#">persistent identifier</a> <a href="#">qualitative data</a> <a href="#">quantitative data</a> <a href="#">research data</a>		
Persistent identifier(s) of the repository	FAIRsharing_doi:10.25504/FAIRsharing.pn7yxf		
Repository size	1.808 hits		
Repository type(s)	other		
Mission statement for designated community	<a href="https://snd.gu.se/en/about-us">https://snd.gu.se/en/about-us</a>		
Research data repository language(s)	Swedish English		
Data and/or service provider	data provider service provider		

[Back to search](#)

[Submit a change request](#)

[Get a badge](#)

# Institutions

- Institution name & URL
- Additional name(s)
- Institution Identifier(s)
- Contact information
- Country
- Responsibility type(s)
- Institution type(s)
- Responsibility start date
- Responsibility end date

Institution name	<a href="#">Swedish Research Council</a>
Additional name(s)	Vetenskapsrådet
Identifier(s)	ROR:03zttf063 RRID:nlx_152073 RRID:SCR_011552
Country	<a href="#">Sweden</a>
Type(s) of responsibility	funding
Type of institution	non-profit
Start date of responsibility	2008

Institution name	<a href="#">University of Gothenburg</a>
Additional name(s)	Göteborgs Universitet
Identifier(s)	ROR:01tm6cn81 RRID:SCR_011647 RRID:nlx_93338
Country	<a href="#">Sweden</a>
Type(s) of responsibility	funding
Type of institution	non-profit
Start date of responsibility	2008

[Back to search](#)

[Submit a change request](#)

# Terms

- Policies
- Database access
- Data accesses
- Data uploads
- Data upload licenses

## Policies (2)

Policy Name [CoreTrustSeal assessment](#)

Policy Name [Data policy of the information system PANGAEA](#)

## Database access

Type of access to research data repository [open](#)

## Database licenses (1)

Database License [CC0](#)

## Data access (1)

Type of access to data [open](#)

## Data licenses (4)

DataLicense [CC](#)

DataLicense [other](#)

<i>Access (property)</i>	<i>Open Access</i>		<i>Restricted Access</i>		<i>Closed Access</i>
Access to Repository (20.1 databaseAccessType)	open		open or restricted		closed
Access to Data (22.1 dataAccessType)	open (embargoed, restricted, closed)		restricted (embargoed, closed)		closed
Data Upload (24.1 dataUploadType)	open or restricted	closed	open or restricted	closed	-

# Standards

- PID system(s)
- Repository software
- Versioning
- Data citation guideline with URL
- Enhanced publication (allows links between publications and data)
- Quality management
- API type(s)
- Metadata standards
- Syndication services
- Further remarks
- Entry date
- Last update

General	Institutions	Terms	Standards
Persistent identifier system(s)	DOI		
Name of the repository software	other		
Versioning	yes		
Data citation guideline	<a href="https://wiki.pangaea.de/wiki/Citation">https://wiki.pangaea.de/wiki/Citation</a>		
Author identifier system(s)	ORCID		
Enhanced Publication	unknown		
Quality management	yes		
<b>Application programming interfaces (1)</b>			
API type	OAI-PMH		
<b>Metadata standards (4)</b>			
Metadata standard name	<a href="#">Darwin Core</a>		
Metadata standard scheme	DCC		
Metadata standard name	<a href="#">ISO 19115</a>		
Metadata standard scheme	DCC		
Metadata standard name	<a href="#">Dublin Core</a>		
Metadata standard scheme	DCC		
Metadata standard name	<a href="#">DIF - Directory Interchange Format</a>		
Metadata standard scheme	DCC		
<b>Alerting services (1)</b>			
Type of alerting service	RSS		
<b>Remarks</b>			
Remarks	PANGAEA is covered by WoS/Clarivate, Elsevier and Dimensions AI data citation index. Data of the World Data Center for Marine Environmental Sciences (WDC-MARE) are available via the data library PANGAEA which is operated as a regular member of the World Data System - WDS. To interact with the PANGAEA database, R and Python 3 packages are provided. An Bathymetry OGC Web Map Service can be used for visualisation. All information about PANGAEAs toolbox can be found at: <a href="https://www.pangaea.de/tools/">https://www.pangaea.de/tools/</a>		
Entry date	2012-07-16		
Last update	2023-02-15		



# Input: Keeping records up-to-date

- Automated updates (e.g. CoreTrustSeal)
- Reviews by the editorial team
- Change requests:

Contact	<a href="https://nanohub.org/about/contact">https://nanohub.org/about/contact</a>
Content type(s)	<a href="#">Databases</a> <a href="#">Audiovisual data</a> <a href="#">Software applications</a> <a href="#">Standard office documents</a> <a href="#">other</a>
Keyword(s)	<a href="#">Nanomaterial Registry</a> <a href="#">nanoBIO</a> <a href="#">nanoscience</a> <a href="#">nanotechnology</a> <a href="#">simulation</a> <a href="#">thermalhub</a>
Persistent identifier(s) of the repository	RRID:SCR_013963 OMICS_27120
Repository size	6.139 resources
Repository type(s)	disciplinary
Mission statement for designated community	<a href="https://nanohub.org/about">https://nanohub.org/about</a>
Research data repository language(s)	English
Data and/or service provider	data provider service provider

[Back to search](#)

[Submit a change request](#)

## Submit a change request

Make changes to the properties that need an update. The editorial board will review the submitted record and put it online

General

Repository name	<input type="text" value="nanoHUB"/>
Repository name language	<input type="text" value="English"/>
Additional names	<p>Text <input type="text" value="nanoHUB.org"/></p>
Language	<input type="text" value="English"/>
Repository url	<input type="text" value="https://nanohub.org/"/>
Subjects	<p>Name <input type="text" value="31 Chemistry"/></p> <p>Scheme <input type="text" value="DFG"/></p>

# Input: Required information

Required information

**Repository name**

**Repository name language**

**Repository url**

**Description**

**Description language**

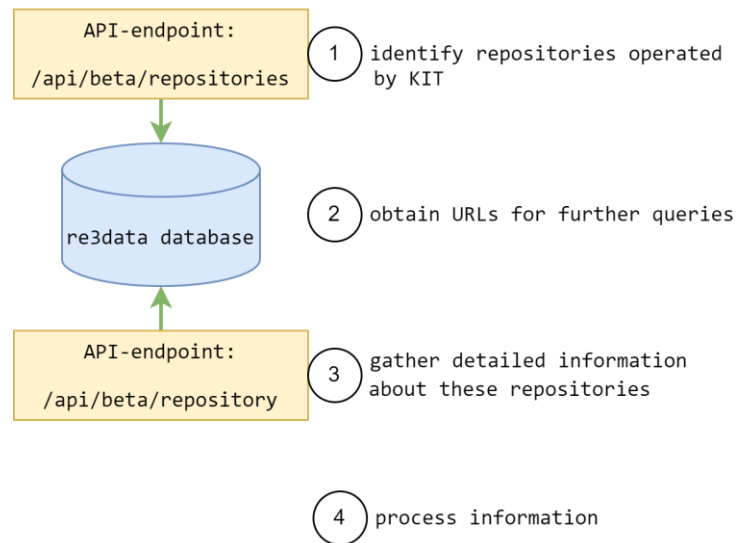
**Data licenses**

**Suggester's email**

# Output: Querying the re3data API

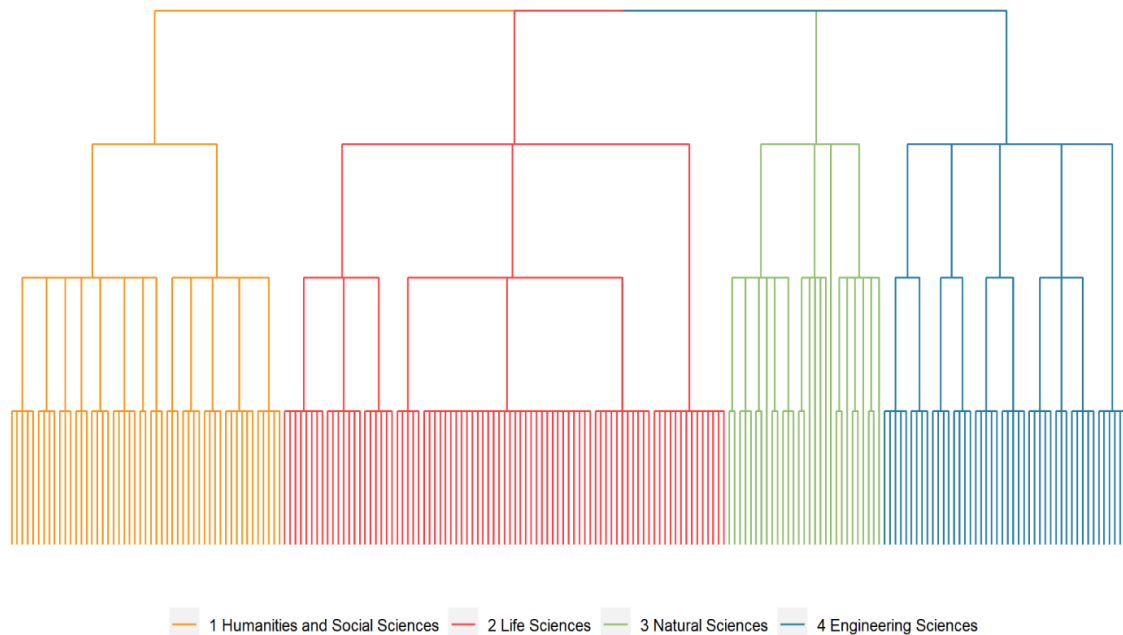
- re3data metadata is available under a CC0 via an open API and a GUI: <https://www.re3data.org/search>
- In our GitHub repository, we show examples for using the re3data API that can be adapted to fit other use cases: [https://github.com/re3data/using\\_the\\_re3data\\_API](https://github.com/re3data/using_the_re3data_API)

Schematic overview of a possible query process:



Visit our [blog](#) for more information!

# Subject classification: Gaining an overview



re3data applies the [DFG Subject Areas](#) to...

1. describe repositories in adequate depth, enabling users to find an RDR that suits their specific needs.
2. create separation between repositories, enabling users to distinguish RDR based on their disciplinary focus.

Visit our [blog](#) for more information!

# Icons: Facilitating the selection process of suitable research data repositories

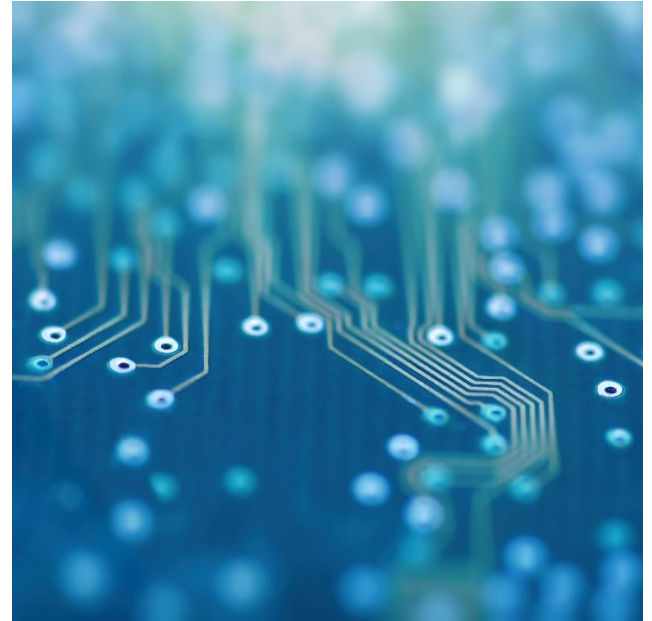


# Research data repositories: Essential infrastructures for FAIR data management

RDR generate, consolidate and maintain metadata, ensuring that valuable research data can be systematically reused over the long term.

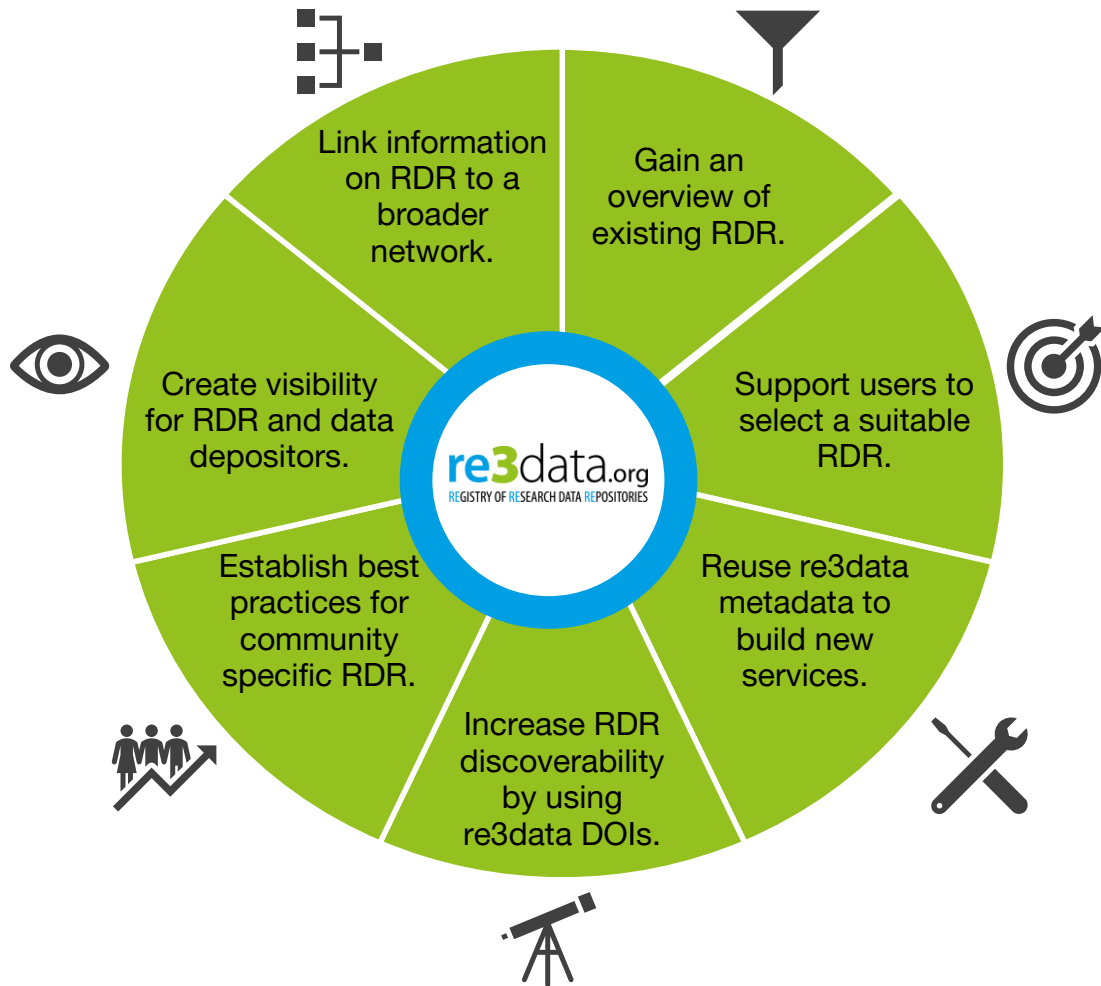
## Challenges:

- Practices and customs in RDM vary widely across research disciplines.
- A multitude of tools and services makes it harder for users to find and choose what they need.
- Users are confronted with scattered and unstructured information.



re3data can help  
the NFDI solve  
these challenges:

Join in and  
have your data  
repositories  
listed!



# re3data.org

REGISTRY OF RESEARCH DATA REPOSITORIES

Any questions?



Contact us!

Web: [www.re3data.org](http://www.re3data.org)

Mail: [info@re3data.org](mailto:info@re3data.org)

Mastodon: [@re3data@openbiblio.social](https://openbiblio.social/@re3data)

Twitter: [@re3data](https://twitter.com/re3data)

<https://doi.org/10.5281/zenodo.7837286>



<https://creativecommons.org/licenses/by/4.0/>