





The LOUD Social Fabrics of IIF

Julien A. Raemy (Digital Humanities Lab, University of Basel; DaSCH)

 ORCID [0000-0002-4711-5759](https://orcid.org/0000-0002-4711-5759)  Google Scholar [Julien A. Raemy](https://scholar.google.com/citations?user=Julien A. Raemy)  GitHub [julsraemy](https://github.com/julsraemy)  Mastodon [@julsraemy@hcommons.social](https://hcommons.social/@julsraemy)

2023 IIF Annual Conference
University of Naples, Italy | 8 June 2023

What was being sold

1. Identifying the sociotechnical requirements for the establishment of community-driven initiatives
2. Exploring how the implementation of IIF has progressed within cultural heritage institutions and the potential of the framework in relation to scientific movements and principles



What you will get

1. Identifying the sociotechnical requirements for the establishment of community-driven initiatives → **Sociotechnical assemblages**
2. Exploring ~~how the implementation of IIF has progressed within cultural heritage institutions and~~ the potential of the framework in relation to scientific movements and principles → **Situating IIF**





Context

Linked Open Usable Data for Cultural Heritage

Perspectives on Community Practices and Semantic Interoperability

PhD Thesis - <https://phd.julsraemy.ch> - supervised by:

- Peter Fornaro (University of Basel)
- Walter Leimgruber (University of Basel)
- Robert Sanderson (Yale University)



PhD Methodology (some of it)

- **Situating Linked Open Usable Data**
 - Systematic Literature Review
 - Interviews
- **The Social Fabrics of IIF and Linked Art**
 - Analysing "primary" data (GitHub issues, call minutes)
 - Observations
 - Survey → *Characterising the IIF and Linked Art communities*



Actor-Network Theory (ANT)

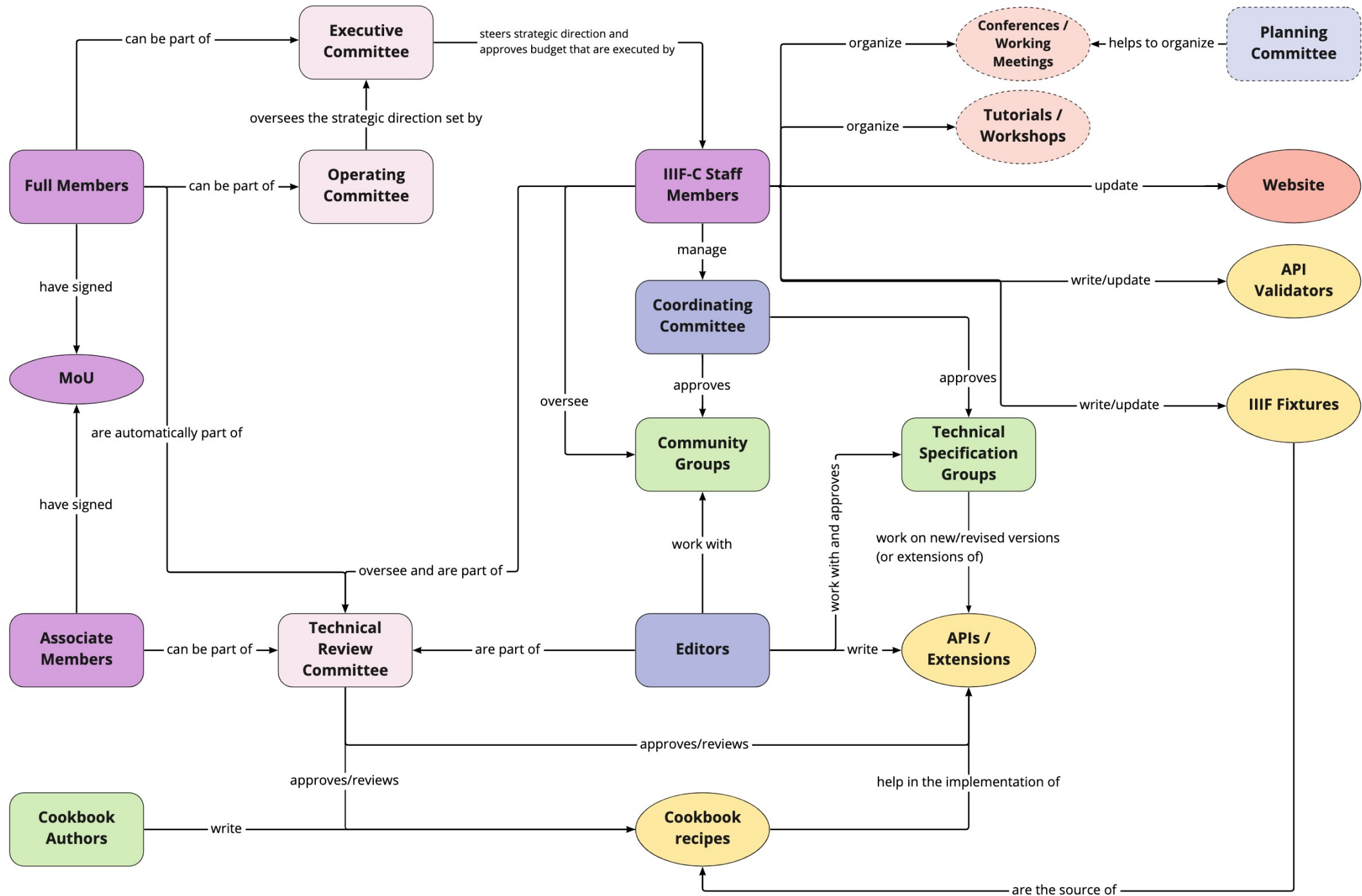
“ Actor-Network Theory aims at describing the very nature of societies. But to do so it does not limit itself to human individual actors, but extent the word actor - or actant - to non-human, non-individual entities. [Latour 1996](#) ”

1. Non-Humans Have Agency → *more open stories to be told*
2. Assembling the Collective → *intermediaries/mediators, dependencies/controversies*
3. Translation Process → *naming the associations*



Sociotechnical assemblages





Survey

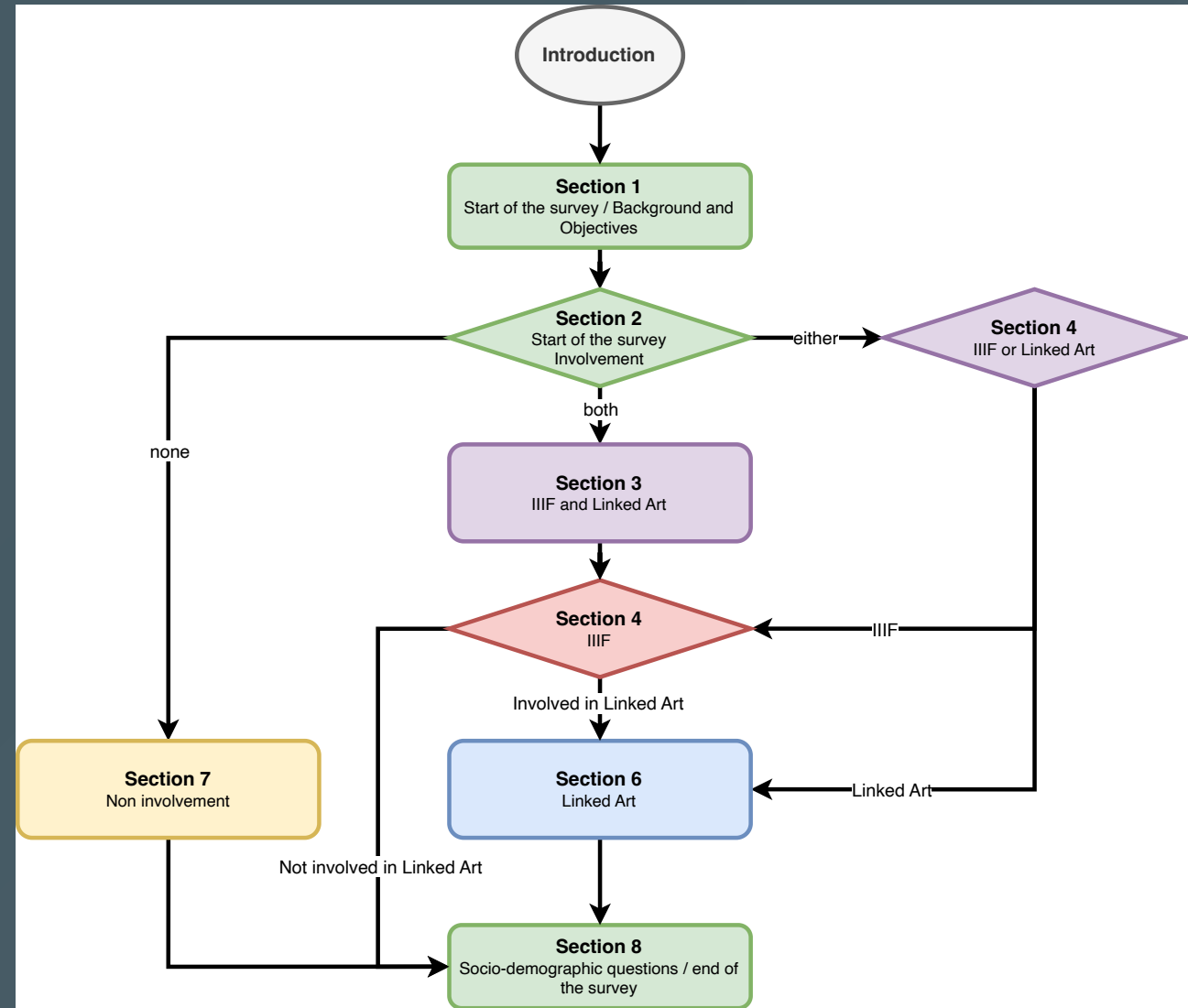
🕒 24 March to 7 May 2023

🎯 Individuals involved in IIF and Linked Art, but also people that have heard of the communities/specifications

8 Sections

📢 Mailing lists, Slack workspaces, Mastodon

📝 Report to be soon published



Who participated?

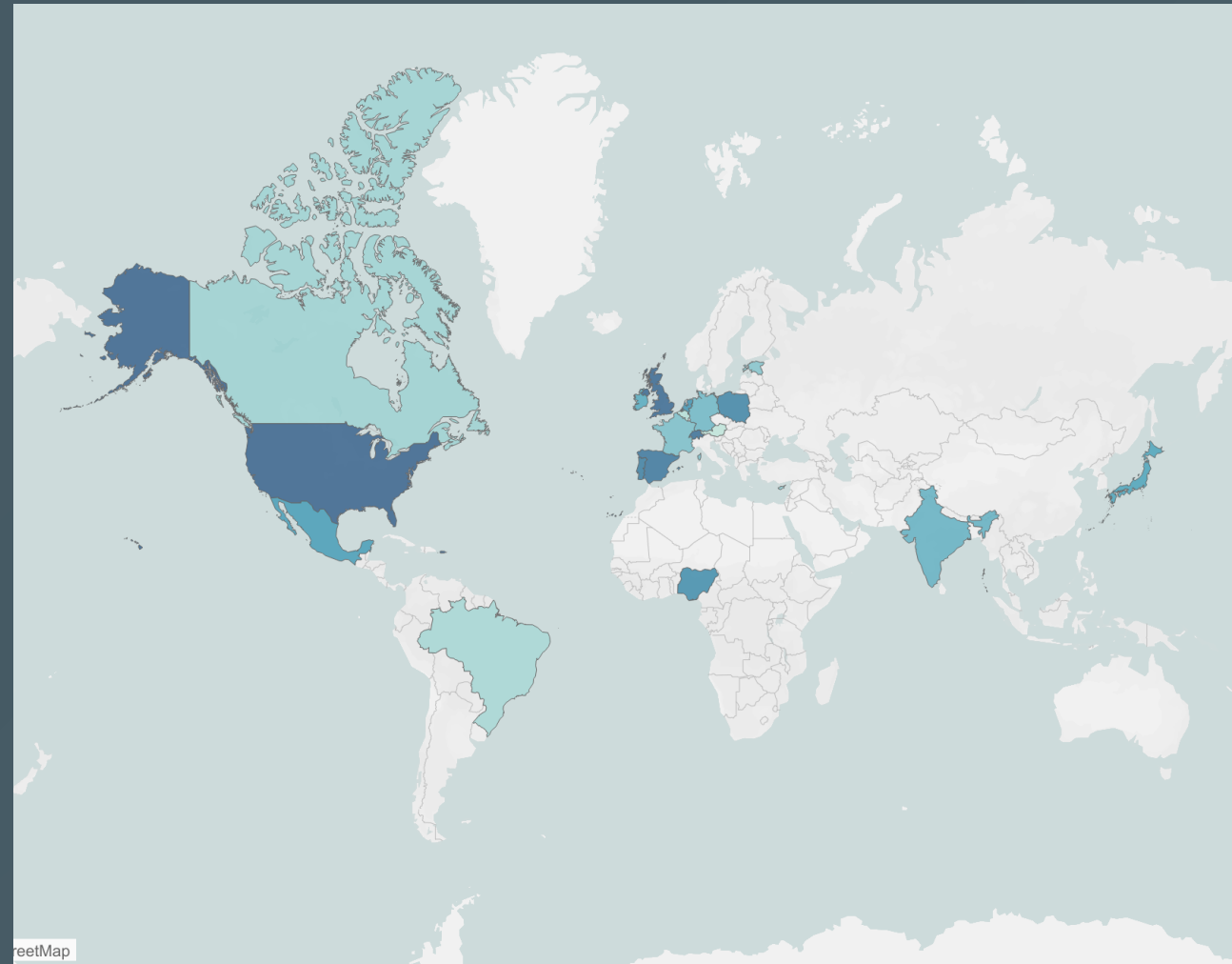
👤 79 participants from 20 countries

🎓 66 individuals (83.5%) with at least a Master's degree

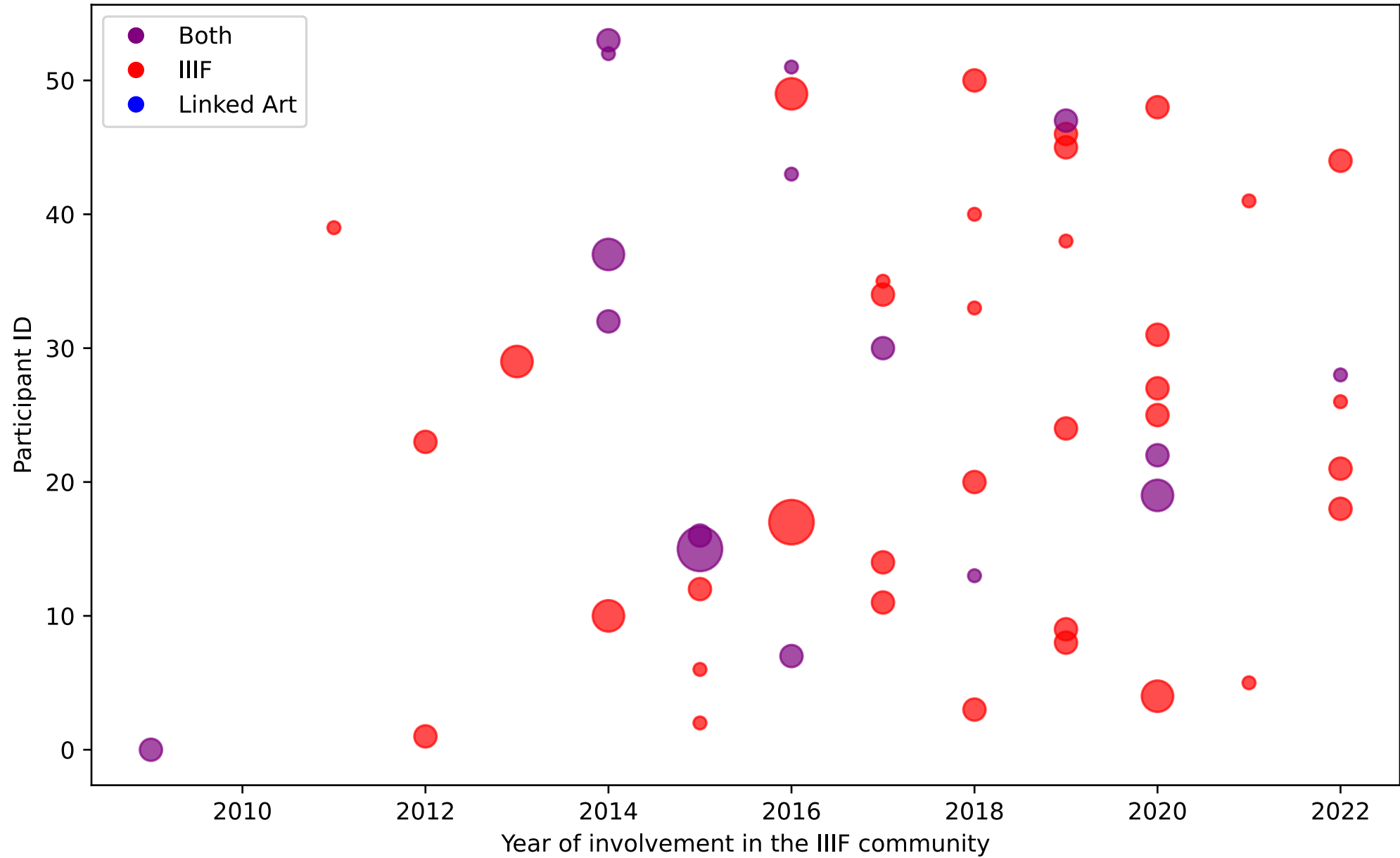
🔨 52 individuals (65.8%) involved in IIF or in both communities

♂️ 50 Males (63.3%), 26 Females (32.9%)

🏛️ 33 GLAM, 26 Academia



IIF Calls Engagement



Practices

- Asking the IIF community or other participants often goes hand in hand with using the **IIF Slack** for help and discussion.
- Consulting the **IIF website** and referring to documentation, **GitHub** or specific tools are common practices.
- Collaborating with experts within their organisation is often mentioned alongside seeking help from developers.

Enablers

- ✓ Inclusive and collaborative nature
- ✓ Interoperable APIs and compatible implementations
- ✓ Openness and friendliness
- ✓ Commitment to providing resources and addressing needs



Inhibitors

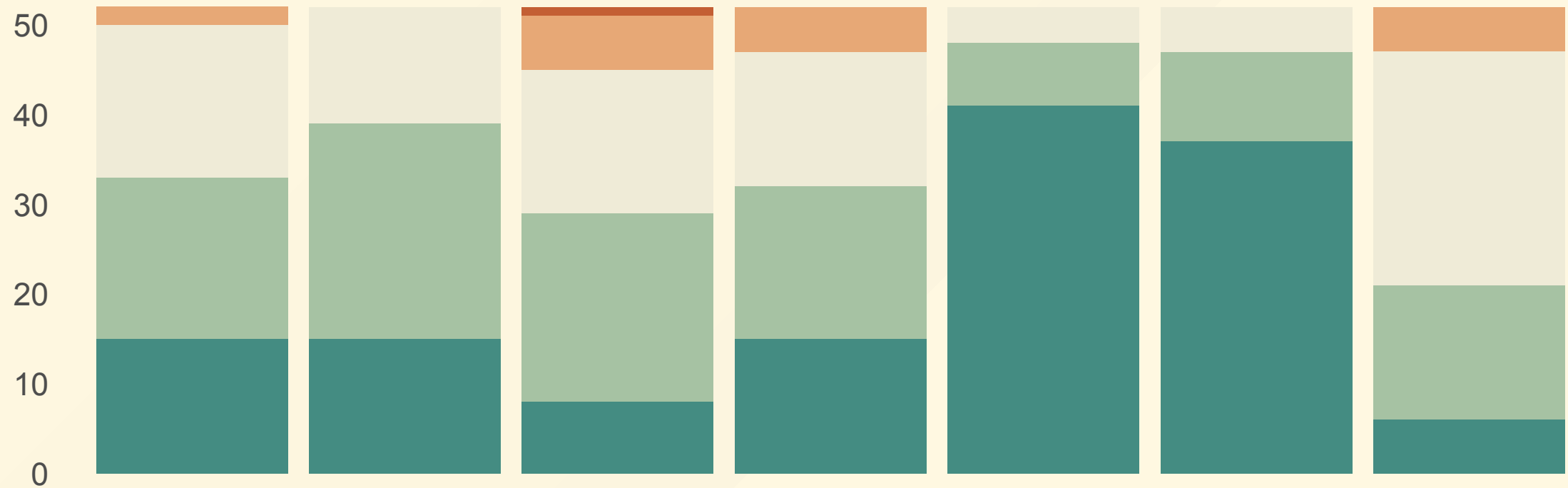
- Time constraints for participants
- Technical complexity and learning curve
- High costs of in-person meetings
- Lack of employer support and recognition of community work










Situating IIIIF

Situating IIRF to movements and principles (n=52)



 Strongly disagree  Disagree  Neither agree nor disagree  Agree  Strongly agree

IIF and Linked Art

- Both communities prioritise usable linked data (LOUD) by emphasising open API adoption.
- Common individuals play important roles in both initiatives.
- They collaborate on standards, development and meetings, fostering a culture of community-led work and shared knowledge.
- IIF has expanded into various domains, while Linked Art remains focused on art-related objects for a smaller audience.



Takeaways

Pinning down the social fabrics of the wider IIF community in relation to the IIF Strategic Planning

Advocacy & Leadership

- The survey did not adequately address this particular issue, highlighting the need for further investigations.

Technical Development

- The success of the IIF Community relies heavily on the maintenance of essential IIF-compliant viewers such as Mirador and UV. With an increasing number of individuals depending on these software tools, their continuous upkeep becomes absolutely vital.

Community Development

- The IIF community is growing and evolving with new members joining regularly, while some long-standing members remain involved. However, newer individuals who joined in the past four to five years are not actively participating, particularly in TSGs.

Membership & Value

- An area that demands significant attention is the aspect of costs associated with in-person meetings, along with the inadequate employer support in engaging with the IIF community.

Image Credits

- [Blick auf das Spalentor]. Basel, 1938. Ernst Brunner. SGV_12N_00115
- [Katze auf einer Mauer]. Ort und Datum unbekannt. Ernst Brunner. SGV_12N_19553
- [Ringtanz während der Masüras auf der Alp Sura]. Guarda, 1939. SGV_12N_08589
- ["Steffenbach-Brücke" der Furka-Bahn: Bau und Erneuern der Brücke]. Kanton Wallis, 1950. Ernst Brunner. SGV_12N_36937

These images are part of the [photographic archives of the Swiss Society for Folklore Studies](#). Licence: [CC BY-NC 4.0](#)