

**The
Alan Turing
Institute**

**Beyond Digital Humanities:
Weaving Humanities, Research
Software Engineering and AI**

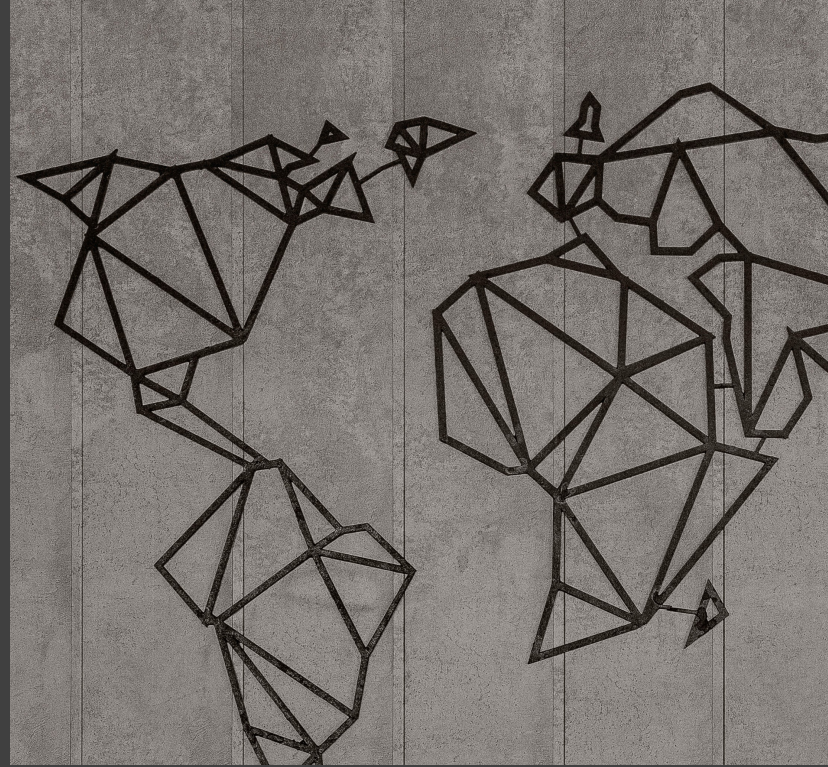
David Beavan

T: @DavidBeavan | M: @davidbeavan@fosstodon.org
University of Georgia (UGA) 2023-03-15



Outline

- Introduction
- Living with Machines
- Highlights
- Challenges
- Future of Digital
Research
Infrastructure



The Alan Turing Institute

W: [turing.ac.uk](https://www.turing.ac.uk) | T: @turinginst



The Alan Turing Institute

- Established 2015
- National Institute for Data Science and AI
- Over 400 researchers plus many other roles
- All disciplines



Turing Strategic and Project Partners





University partners

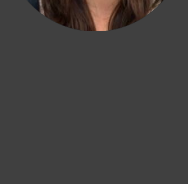
- 13 Founding universities
- 25 Additional Network Development Awards
- From 2023 truly national reach

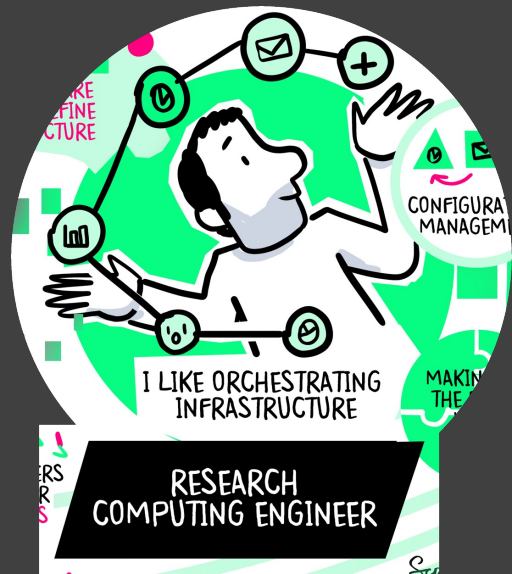
Research Engineering Group (REG)

W: [turing.ac.uk/research-engineering](https://www.turing.ac.uk/research-engineering) | T: @turinghut23



45 and growing





Research Software Engineer: The Craftsperson and the Scholar

– James Hetherington

Living with Machines



W: livingwithmachines.ac.uk

T: [@livingwmachines](https://twitter.com/livingwmachines)

Our Partners

The
Alan Turing
Institute



Our Funders



UK Research
and Innovation

Living with Machines

- British Industrial Revolution (1780-1920)
- New historical perspectives
- Use digital methods
- New tools and code
- New computational techniques
- Enrich national data holdings
- Advance public awareness



Living with Machines

- Going beyond Digital Humanities
- 5 year project
- 2018-2023
- Arts & Humanities Research Council funded
- £9+ million
- Six partner institutions





Ruth Ahnert
(GMUL)

[Read more](#)



David Beavan
(Turing)

[Read more](#)



Emma Griffin
(UEA)

[Read more](#)



Timothy Hobson
(Turing)

[Read more](#)



Jon Lawrence
(Exeter)

[Read more](#)



Maja Maricevic
(British Library)

[Read more](#)



Barbara McGillivray
(Turing / King's College London)

[Read more](#)



Mia Ridge
(British Library)

[Read more](#)



Alan Wilson
(Turing)

[Read more](#)



Claire Austin
Rights Assurance

[Read more](#)



Kaspar Beelen
Digital Humanities Senior Research Associate

[Read more](#)



Mariona Coll Ardanuy
Computational Linguistics Senior Research Associate

[Read more](#)



Lóití Demertzi
Programme Coordinator

[Read more](#)



Luke Hare
Research Data Scientist

[Read more](#)



Sherman Lo
Research Data Scientist

[Read more](#)



Katie McDonough
Senior Research Associate

[Read more](#)



Federico Nanni
Senior Research Data Scientist

[Read more](#)



Nilo Pedrazzini
Corpus-Based Digital Humanities Research Assistant

[Read more](#)



André Piza
Research Project Manager

[Read more](#)



Griffith Rees
Research Data Scientist

[Read more](#)



Kallie Westering
Research Software Engineer

[Read more](#)



Daniel Wilson
History Senior Research Associate

[Read more](#)



Rosie Wood
Research Data Scientist

[Read more](#)



Filipe Bento
Research Associate

[Read more](#)



Giovanni Colavizza
(Turing)

[Read more](#)



Joel Dearden (1979-2020)
Research Software Engineer

[Read more](#)



Adam Farquhar
(British Library)

[Read more](#)



Rosa Filgueira
(EPCC), Data Architect

[Read more](#)



Sarah Gibson
Research Software Engineer

[Read more](#)



Lucy Havens
Research Software Engineer Intern

[Read more](#)



James Hetherington
(Turing)

[Read more](#)



Kasra Hosseini
Research Data Scientist

[Read more](#)



Michael Jackson
(EPCC), Software Architect

[Read more](#)



Joshua Rhodes
Senior Research Associate

[Read more](#)



Yann Ryan
British Library Curator, Digital Newspapers

[Read more](#)



Guy Solomon
Research Associate

[Read more](#)



Giorgia Toffo
Data And Content Manager

[Read more](#)



Daniel Van Strien
Digital Curator

[Read more](#)



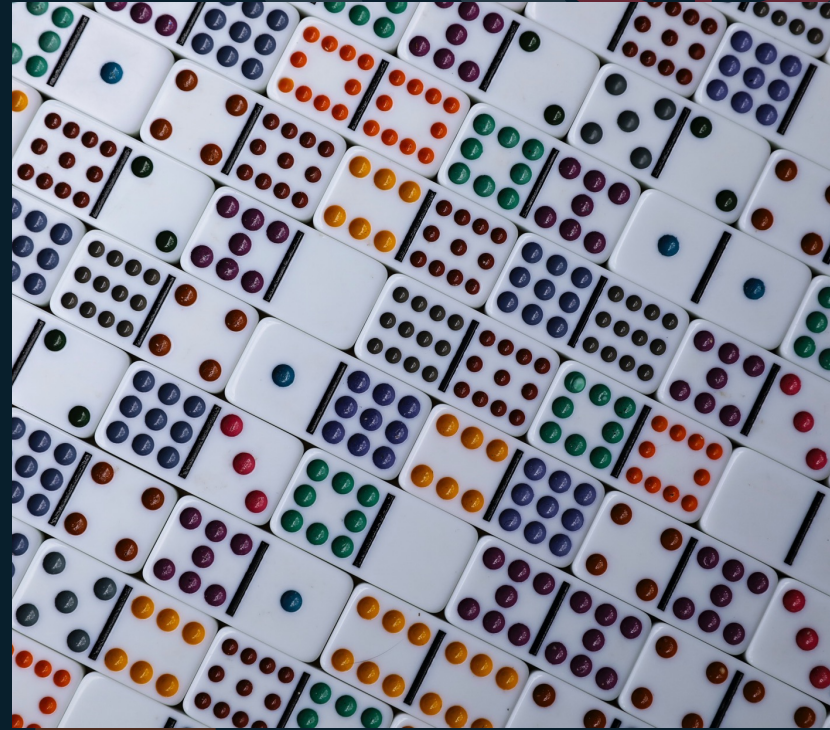
Olivia Vane
Digital Humanities Research Software Engineer

[Read more](#)

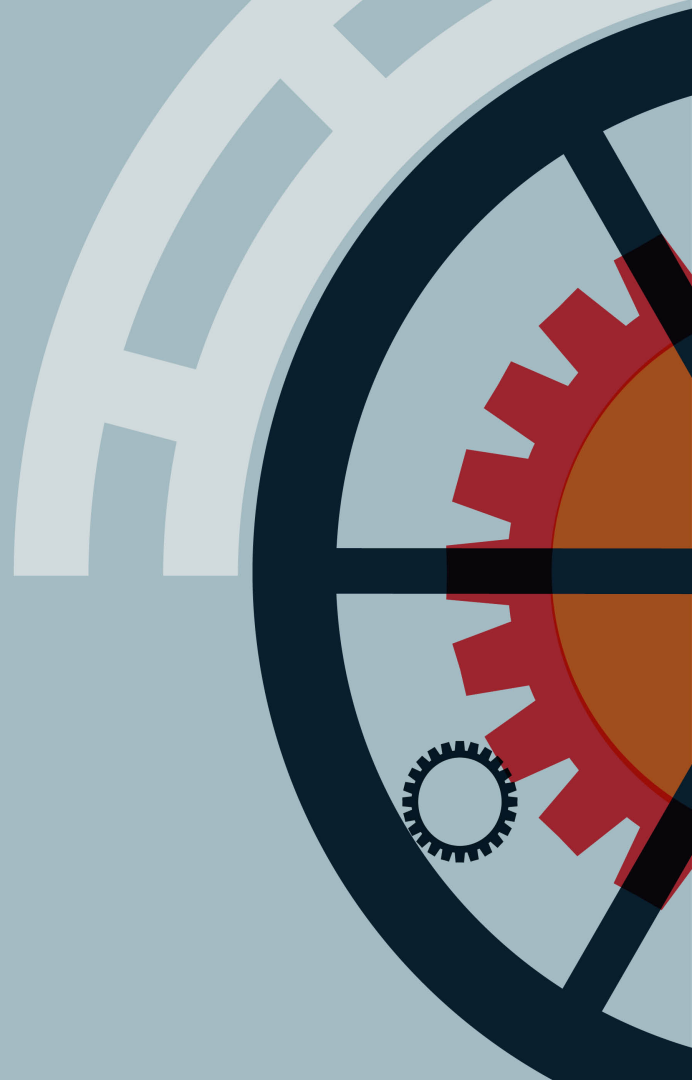
**STOP PRESS
PLUS
NEW STARTER
JOE PALMER**

In numbers

- 109 billion words of historic newspapers
- 129 thousand map sheets
- 180 million household census entries
- plus trade directories, newspaper directories, C19 novels corpus



Language



Environmental Scan



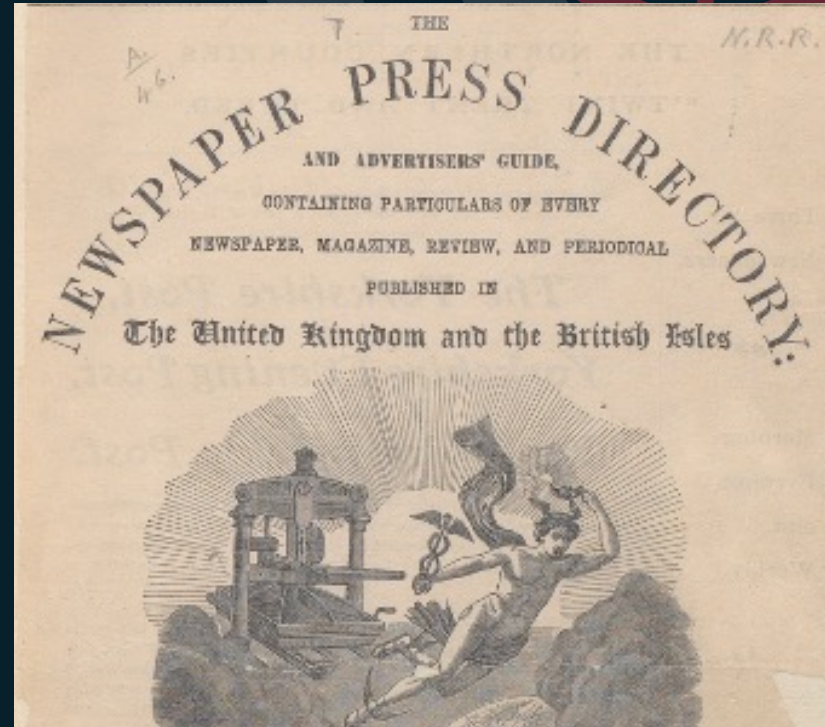
Voices in print

- Digitisation selection
- Preservation selection
- Optical character recognition
- Political bias
- Geographical spread
- Price point



Newspaper press directories

- Mitchell's Newspaper Press Directory and Advertisers' Guide
- 1846 -
- £ we digitised, via BL, we would like data to be open



CHATHAM.—(*Kent.*)

Is a parliamentary borough, and river port, on the east bank of the Medway. It is celebrated for its extensive dockyard, naval arsenal, military depots, marine barracks, and Royal Engineers' establishment. The dockyard has been vastly extended.—*Papers for the district*—

CHATHAM NEWS. Friday and Saturday, 1d.

Independent.—Established July 2, 1859.

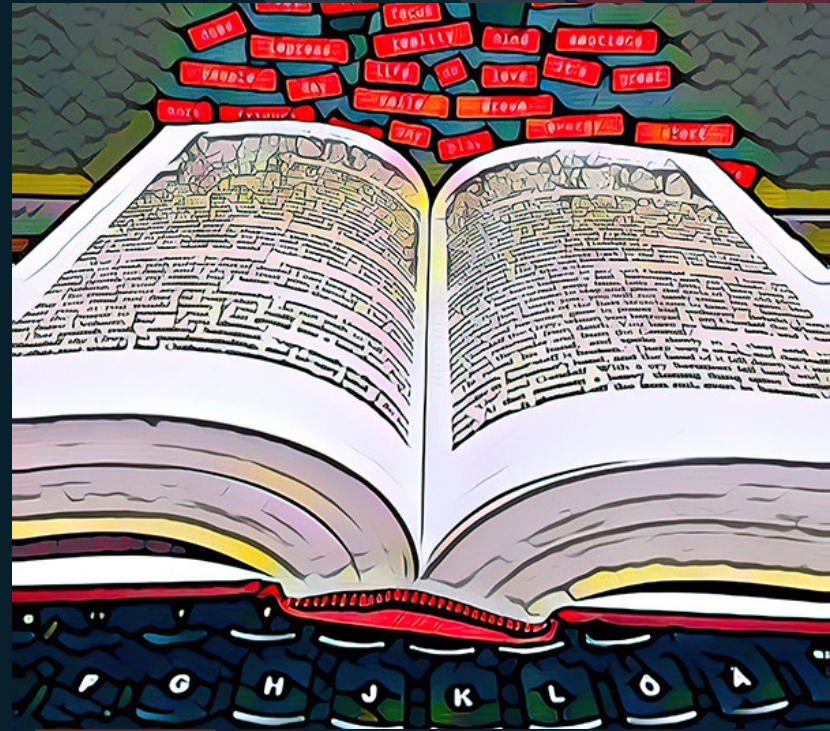
CIRCULATES in Chatham, Brompton, Rochester, Strood, Gillingham, and through the north district of Kent.

ADVOCATES local interests; and unites the news of the district, and several columns of carefully-selected general news, and miscellanies.

PROPRIETORS—Joseph Clayton and Henry Foster.
(Advt., p. 164.)

AI methods

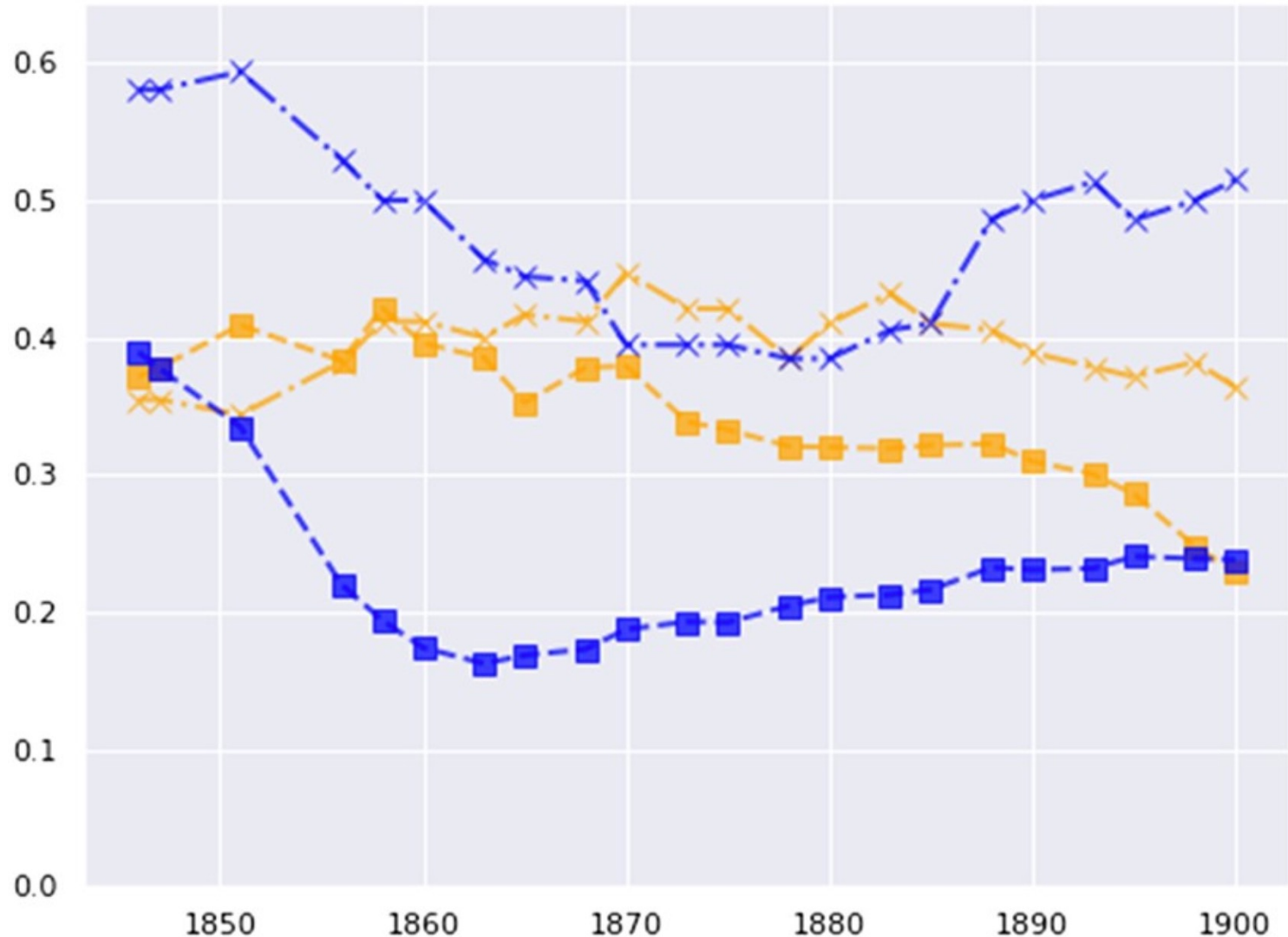
- Image segmentation
- OCR (including identification and rescaling of drop caps)
- Text segmentation
- Semantic annotation
- External record linking
- AI deep learning
- Human-in-the-loop training



Structured data

Time

	S-TITLE	S-POL	E-PER	year
	PORTSMOUTH TIMES AND NAVAL GAZETTE	Liberal	Alfred King	1855
	PORTSMOUTH TIMES AND NAVAL GAZETTE	Liberal	Alfred King	1856
	PORTSMOUTH TIMES AND NAVAL GAZETTE	Liberal	Alfred King	1857
	PORTSMOUTH TIMES	Conservative	Alfred King	1858
	BORTSMOUTH TIMES	Conservative	Alfred King	1860
	PORTSMOUTH TIMES	Conservative	Richard Holbrook	1861
	PORTSMOUTH TIMES	Liberal-Conservative	R . Holbrook	1865
	PORTSMOUTH TIMES	Liberal-Conservative	R . Holbrook	1866
	PORTSMOUTH TIMES	Liberal-Conservative	NaN	1867
	PORTSMOUTH TIMES	Liberal-Conservative	Edward George Holbrook	1868
	PORTSMOUTH TIMES	Liberal-Conservative	Edward George Holbrook	1869



Language of mechanisation



Crowdsourcing

- Diachronic corpus
- Language change over time
- Off the shelf AI methods work on present day English
- Train them on historical data
- Need training data
- Zooniverse



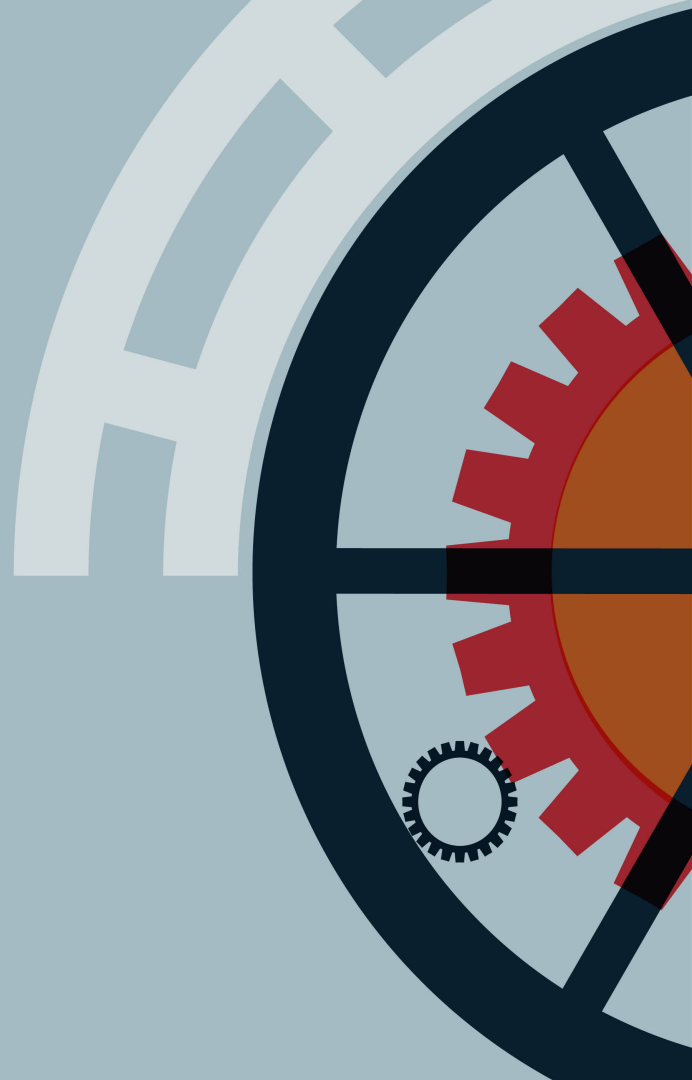


Read the text carefully

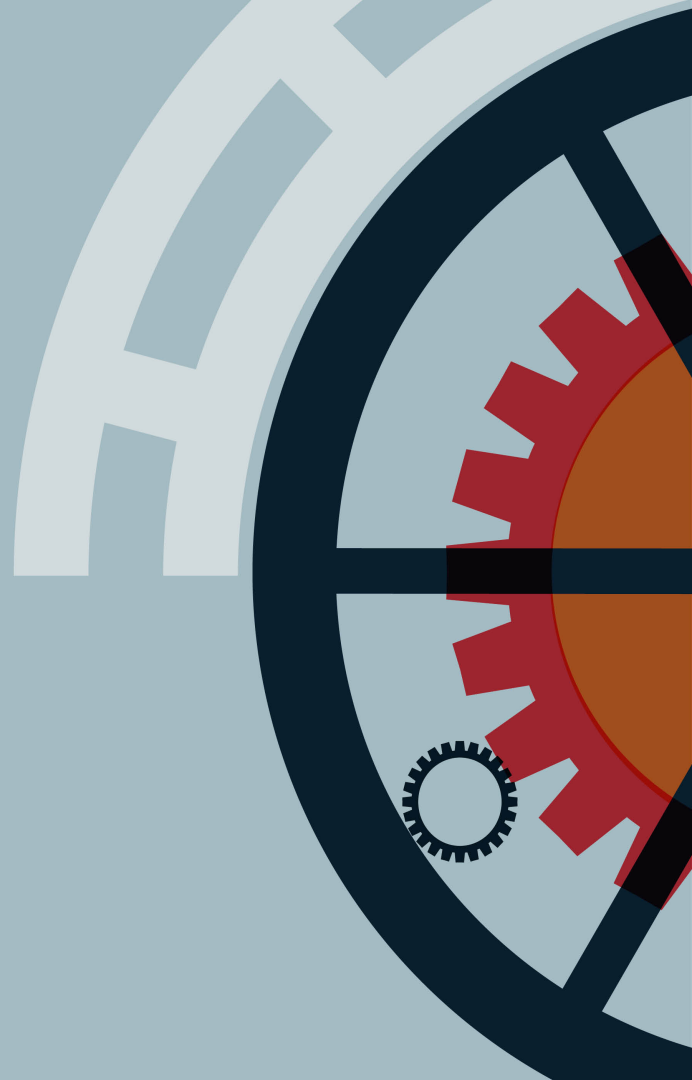
Select the option that best matches the use of 'car' in the article. For example, horse-drawn vehicle, railway carriage or motor car.

for Skerton. It is hard lines on Skerton that other parts of the town should have electric cars and that this, one of the most populous and thriving, should be cut off without them. Yet Skerton is not in hopeless case, after all. It has the horse **car** system, and it is not the Corporation's fault that it cannot be linked up with the electric system this side of the river. What

Place



Toponym disambiguation



Toponym disambiguation

- Resolve OCR issues
- Gather context on place
- Link to gazetteer



Ashton what?

Ashton under Lyne Ashton-
under-Lyne Ashtonunder-
line ASHTONCNDER-LYNE
Ashton-under-lyne
Ashtonunder-Lyne ASHTON-
UXDER-LYNE Ashton-cnder-
Ltne Aditon-under-line
Asbtcn-under-Lyne Ashton
ASHTON-UNDER-LYNE

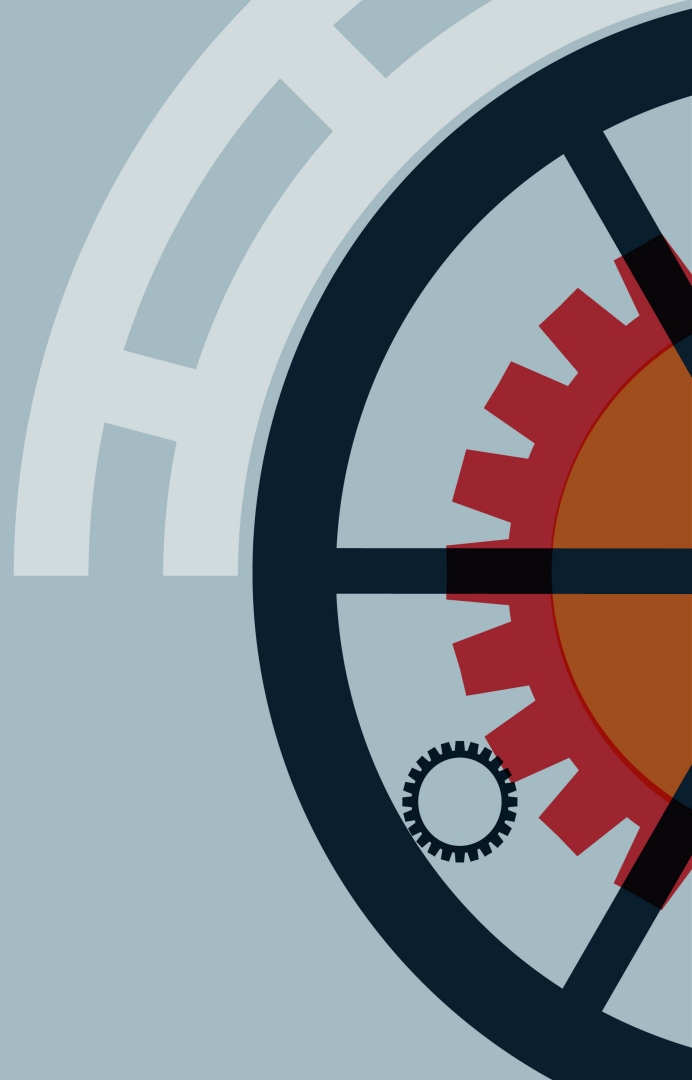


Solution

- DEEp fuzZY string MATCHing
- Deezymatch Python library
- Resilient to OCR errors
- Gazetteer with topics seeded from wikipedia



MapReader





NO 6 WARD

Milk Shed

Goods Shed

Goods Shed

Easton Station
(Terminus)

St. JAMES'S

Printing Works

St. Mary's Church

Coal Depot

School

School

School

School

School

Urinal

Urinal

Posty

Ward Bay

Barnby Street

Barby Street

Clarendon Street

Clarendon Street

Clarendon Square

Clarendon Square

Clarendon Street

Clarendon Street

Charles Street

Charles Street

Clarendon Street

Clarendon Street

Clarendon Street

Drummond Crescent

Drummond Crescent

Clarendon Square

Clarendon Street

Clarendon Street

Clarendon Street

Chapel Street

Chapel Street

Clarendon Street

Clarendon Street

Clarendon Street

Clarendon Street

Clarendon Street

Clarendon Street

Clarendon Street

Clarendon Street

Clarendon Street

Clarendon Street

Clarendon Street

Clarendon Street

Clarendon Street

Clarendon Street

Clarendon Street

Clarendon Street

Clarendon Street

Clarendon Street

Clarendon Street

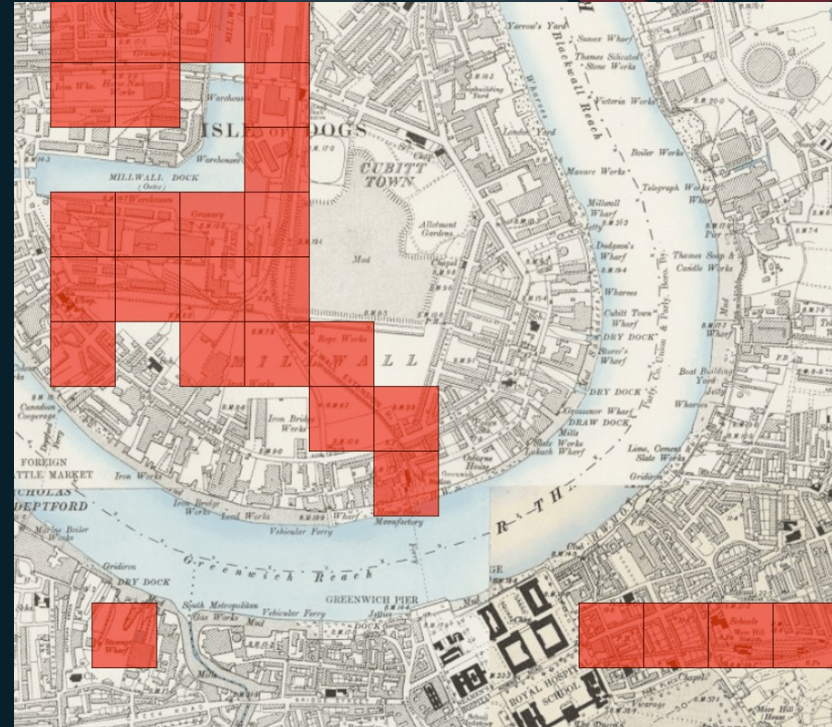
Clarendon Street

1847

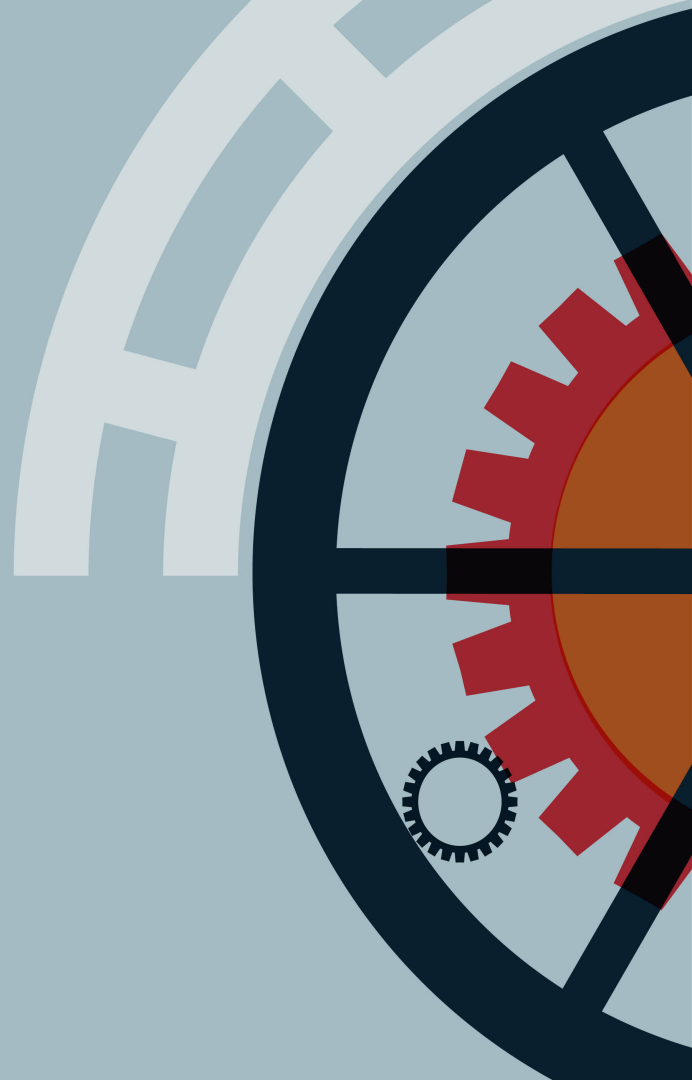


MapReader

- AI Computer Vision
- Science to humanities to science
- Annotation and training
- Model inference
- Visualisation



All together now





Challenges and learnings



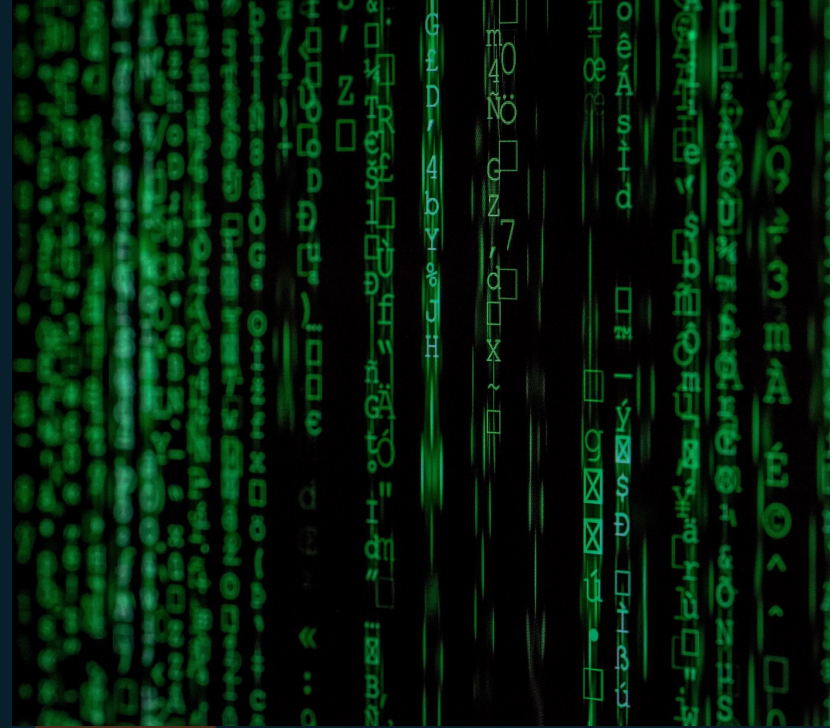
Explore bias and representativeness

- Question what you work with
- Ethical data science and AI
- Arts & Humanities lead the way
- Correct for bias?
- Or just work with it?
- Map the contours of your data



Be data ready

- Data readiness
- Data wrangling takes time
- Understand intellectual property
- Reproducible research if you can
- Think licences



Share what success looks like

- Funders
- Organisations
- Professions
- Career paths
- Values and norms
- Authorship and attribution

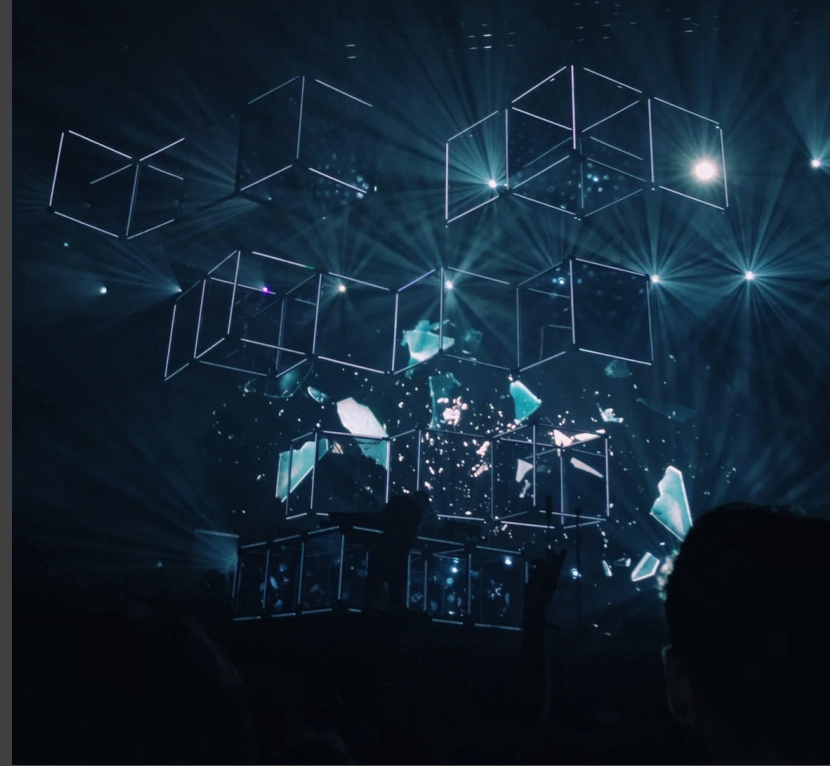


Digital Research Infrastructure



Digital Research Infrastructure

- Compute
- Storage
- Skills
- Trusted Research Environments



All disciplines

- Physical sciences
- Biological sciences
- Environment
- Economic and Social
- Arts & Humanities



Challenges

- Investment tied to projects
- Software limited in scope
- Skills in short supply
- Collections under used



Weaving Humanities, Research Software Engineering and AI

**The
Alan Turing
Institute**

Thank you

David Beavan

T: @DavidBeavan | M: @davidbeavan@fosstodon.org

University of Georgia (UGA) 2023-03-15

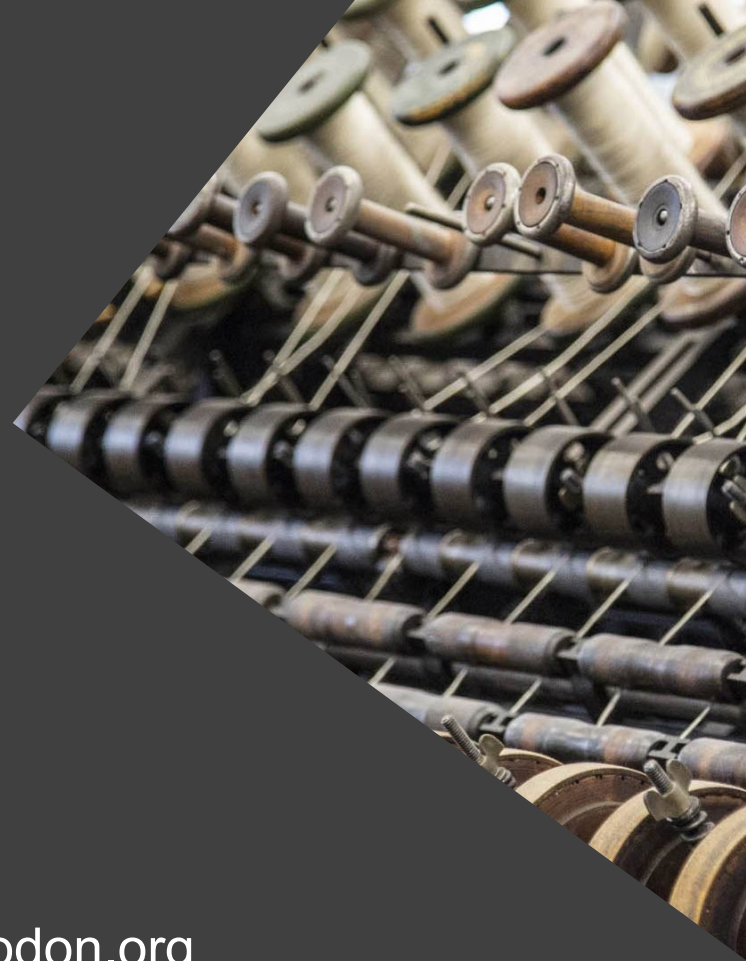
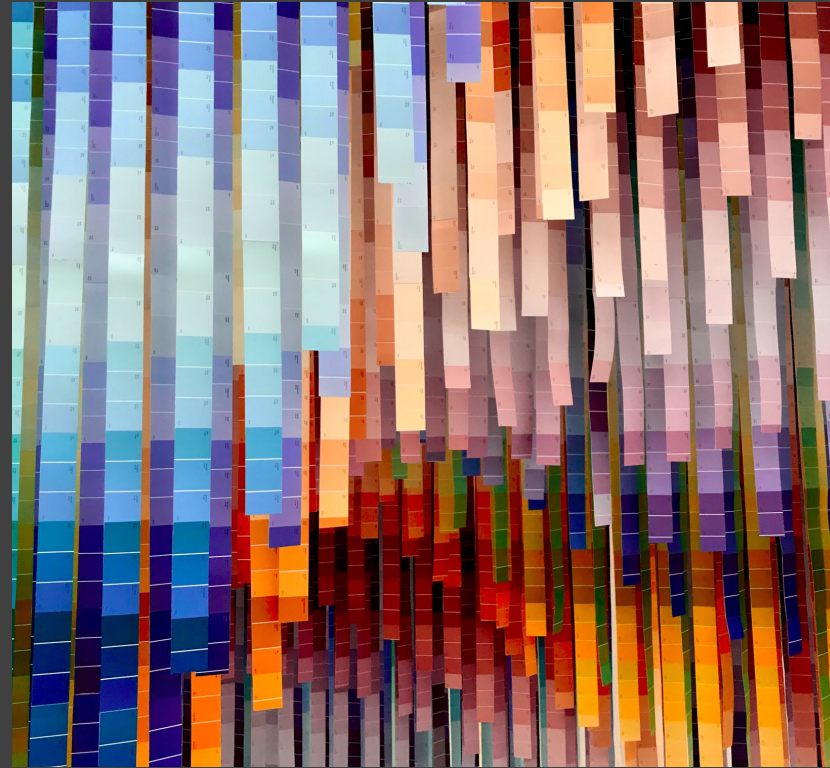


Image credits

- Photo by Marjan Blan | @marjanblan on Unsplash
- Photo by Giuseppe Ruco on Unsplash
- Photo by Greyson Joralemon on Unsplash
- Photo by fabio on Unsplash
- Photo by Martin Adams on Unsplash
- Photo by Shahadat Rahman on Unsplash
- Photo by Henry & Co. on Unsplash
- Photo by Jené Stephaniuk on Unsplash
- Photo by Daniel K Cheung on Unsplash
- Photo by Mick Haupt on Unsplash
- Photo by Benjamin Davies on Unsplash
- Photo by John Schaidler on Unsplash
- Letter Word Text Taxonomy by Teresa Berndtsson
- Photo by Camylla Battani on Unsplash
- Photo by Adi Goldstein on Unsplash
- Photo by Daniel Fazio on Unsplash
- Photo by Marek Piwnicki on Unsplash
- Maps above reproduced with the permission of the National Library of Scotland



**The
Alan Turing
Institute**

**Beyond Digital Humanities:
Weaving Humanities, Research
Software Engineering and AI**

David Beavan

T: @DavidBeavan | M: @davidbeavan@fosstodon.org
University of Georgia (UGA) 2023-03-15

