

Digital Geospatial Toolbox for Citizen Science Projects

GEO CS and Pre-University: building a bridge between school education and digital technology for geographic citizen science



Dr. Serkan Girgin



Dr. Katja Egorova



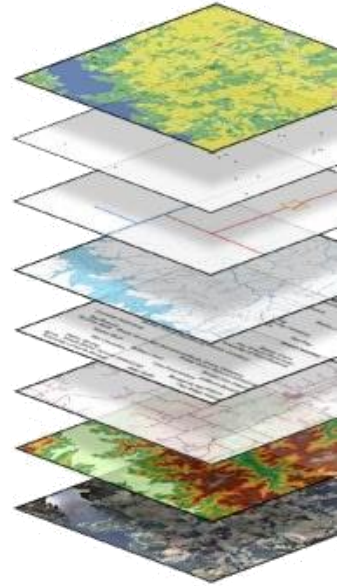
Dr. Jan Jaap Wietsma

First Network & Exchange Event Citizen Science Hub Twente
6 April 2023, University of Twente, Enschede

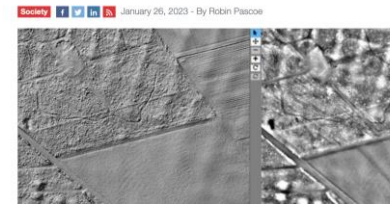
Many citizen science projects produce **geospatial data**

- Geospatial data is information that describes objects, events or other features **with a location** on or near the surface of the earth.
- Geographic citizen science (**Geo CS**) uses manual measurements and in-situ, remote, and mobile sensors to collect* spatiotemporal data.
- **ITC Geo CS Hub** aims to promote and streamline research and education activities that would attract new learners as well as research partners.

https://itc.nl/research/open-science/citizen_science/



Citizens archaeology project finds hundreds of new burial mounds

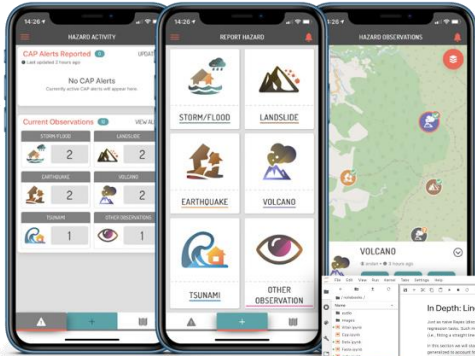


Citizen Scientists Help Smithsonian Conservation Biology Institute Track Cats and Coyotes

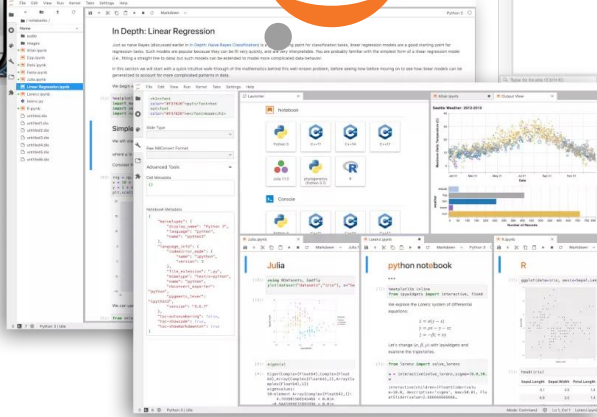
Jan 29, 2015



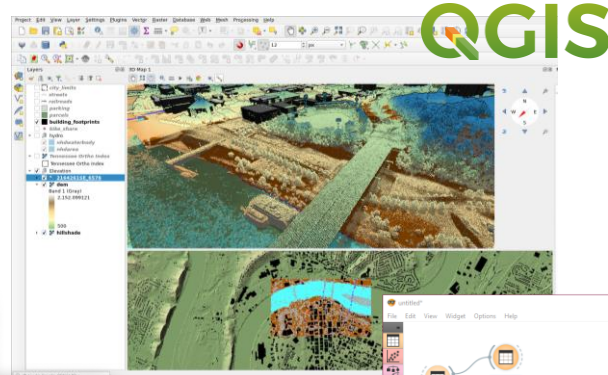
Digital tools help to collect and analyse geospatial data



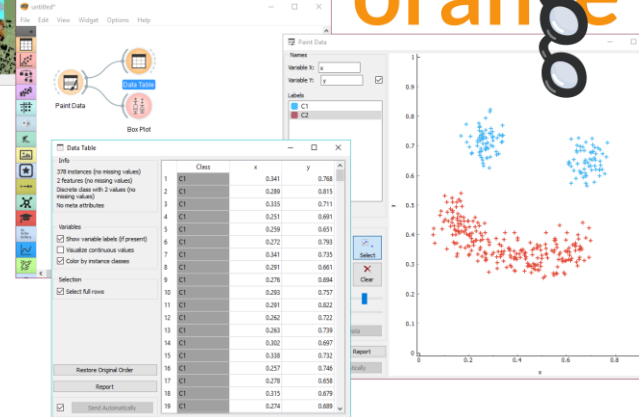
Mobile Applications



Interactive Notebooks



Desktop GIS



Visual Data Analysis

Online **computing platforms** facilitate access to tools

- They are accessible through a web browser
No need to install software
- Tools and applications are ready to use
No need to setup and update
- Analysis-ready public assets can be provided
OpenStreetMap, NL TOP10-1000, etc.
- Assets can be shared easily shared
No need to transfer data
- They are efficient and cost* effective
Even available for free



The image shows a screenshot of the Geospatial Computing Platform website. The header includes the logo and navigation links: About, Platform, Components, Services, Login, Forum, Support, Manual, Contact. The main content area features the title "ONE-STOP GEOSPATIAL DATA ANALYSIS PLATFORM" and a question: "Do you need an infrastructure to analyse geospatial data? Do you need powerful GPU-assisted computing capabilities for machine learning and AI applications on (big) geospatial data?" Below this, it says "You are at the right place" and "Welcome to the ITC Geospatial Computing Platform". To the right of the screenshot is an illustration of three people (two men and one woman) standing in front of a large, curved digital interface displaying various data visualizations and maps. One man is holding a sign that says "A3".

<https://crib.utwente.nl>

 Geospatial
Computing
Platform

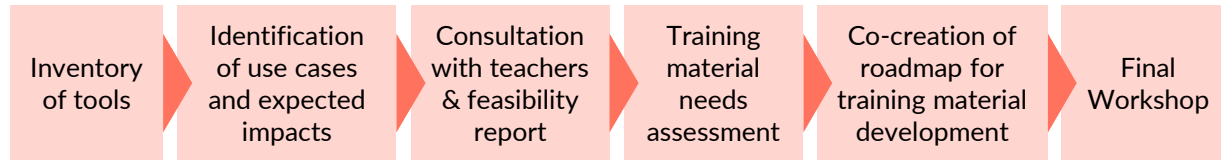
Training is needed to **enable better use** of tools & platforms

- The **threshold** to start using them is currently high and any serious attempt to support Geo CS requires a **well-designed approach** with targeted training.
- This includes **primary and secondary school** students, whose curricula pay special attention on **digital technology** and promote **involvement** to citizen science activities.



How **pre-university** students and teachers can be supported to use a modern **digital toolbox** for Geo CS projects?

- In cooperation with UT Pre-U, a **feasibility study** will be performed to identify how the Geospatial Computing Platform and available tools can be used for CS activities.
- Potential **use cases** and expected impacts will be documented.
- A **roadmap** for developing training material for the target audience will be prepared in consultation with teachers.



The study is funded by the **ITC Geo CS Hub Seed Fund**.



We had the first workshop during the **NLT Conference**



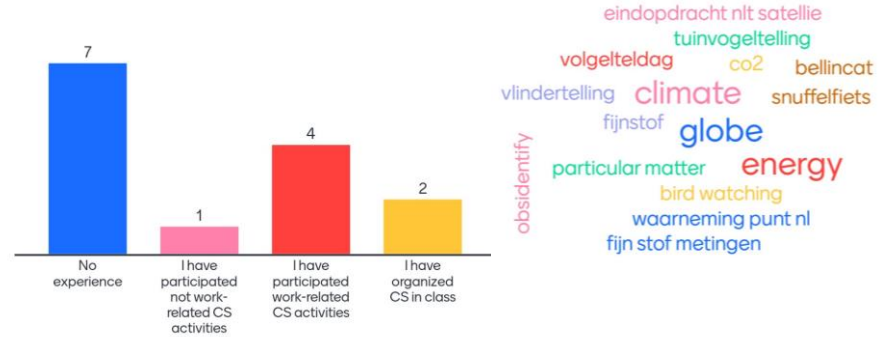
16 February 2023, Doorn

natuur
leven
technologie

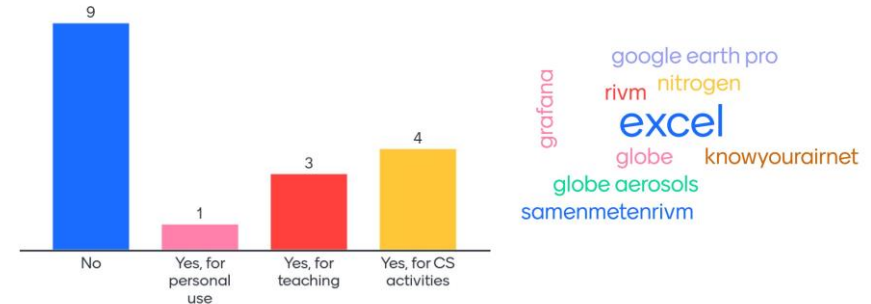
15 jaar!

VERENIGING NLT

What is your experience with citizen science?



Which (geo)data analysis tools do you use?



Please **contact us** for collaboration or questions!



Dr. Serkan Girgin
Faculty ITC, Center of Expertise in Big Geodata Science
s.girgin@utwente.nl



Dr. Katja Egorova
Faculty ITC, Geo Citizen Science Hub
e.egorova@utwente.nl



Dr. Jan Jaap Wietsma
UT Pre-U
j.j.wietsma@utwente.nl

Here's More
Information!



DOI [10.5281/zenodo.7644050](https://doi.org/10.5281/zenodo.7644050)

UNIVERSITY
OF TWENTE.



Pre-University