

Supplementary Material 1 (SM-1)

X-ray computed tomography measurements (CT)

Main article

Design, properties, and manufacturing of cylindrical Li-ion battery cells – A generic overview

Sabri Baazouzi ^{1,*}, Niklas Feistel ¹, Johannes Wanner ¹, Inga Landwehr ¹, Alexander Fill ² and Kai Peter Birke ^{1,2}

¹ Fraunhofer Institute for Manufacturing Engineering and Automation IPA, Nobel Str. 12, 70569 Stuttgart, Germany; sabri.baazouzi@ipa.fraunhofer.de (S.B.); niklasf99@googlemail.com (N.F.); johannes.wanner@ipa.fraunhofer.de (J.W.); inga.landwehr@ipa.fraunhofer.de (I.L.); kai.peter.birke@ipa.fraunhofer.de (K.P.B.)

² Chair for Electrical Energy Storage Systems, Institute for Photovoltaics, University of Stuttgart, Pfaffenwaldring 47, 70569 Stuttgart, Germany; alexander.fill@ipv.uni-stuttgart.de (A.F.); peter.birke@ipv.uni-stuttgart.de (K.P.B.)

* Correspondence: sabri.baazouzi@ipa.fraunhofer.de

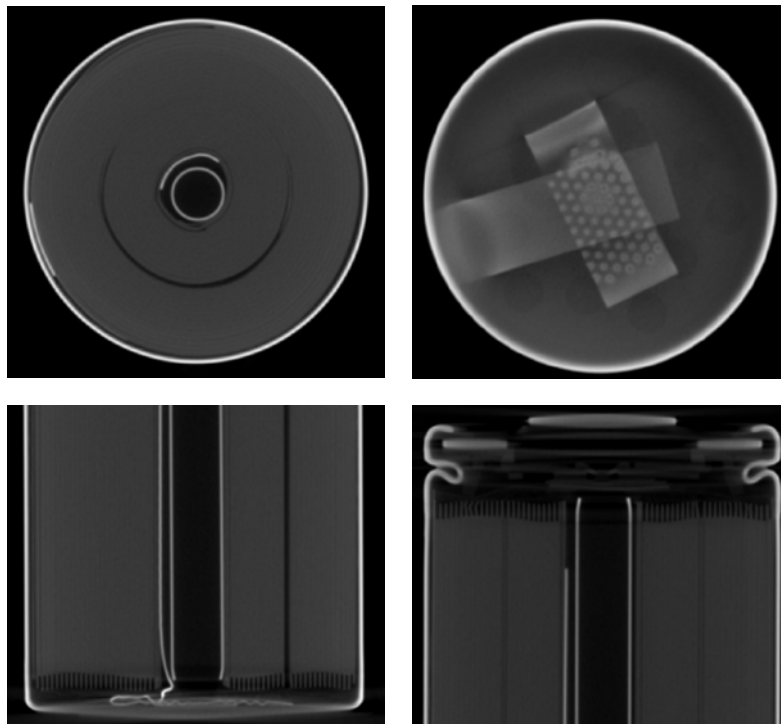


Figure 1. Sony / Murata US18650VTC4

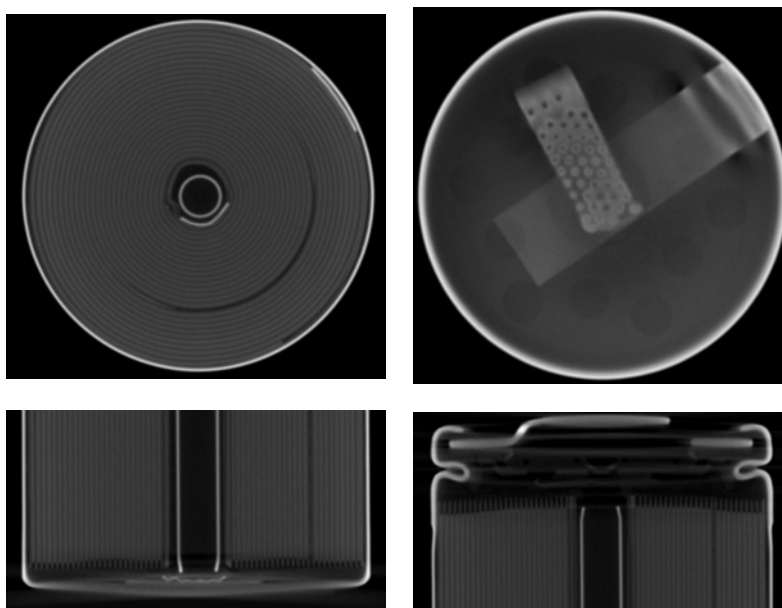


Figure 2. Sony / Murata US18650VTC6

18

19

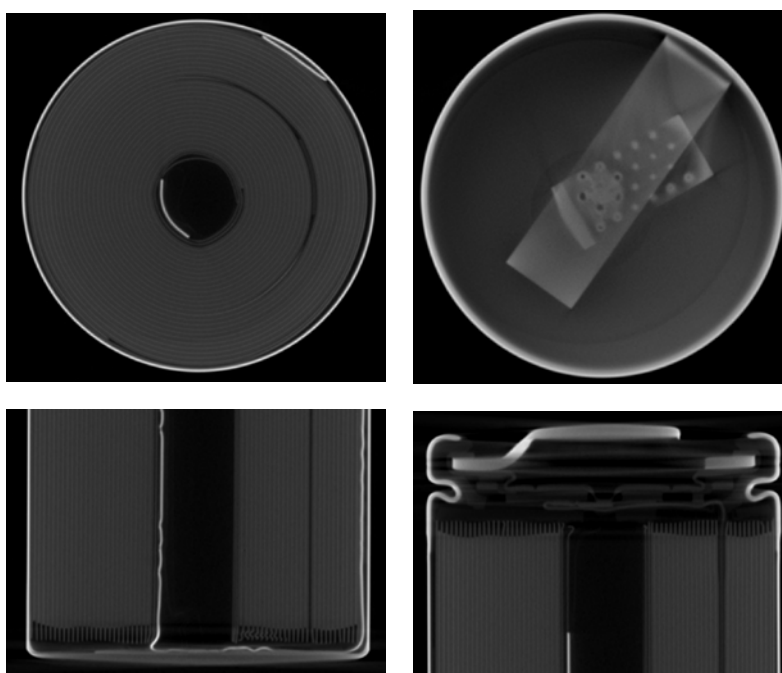


Figure 3. Samsung INR18650-25R

20

21

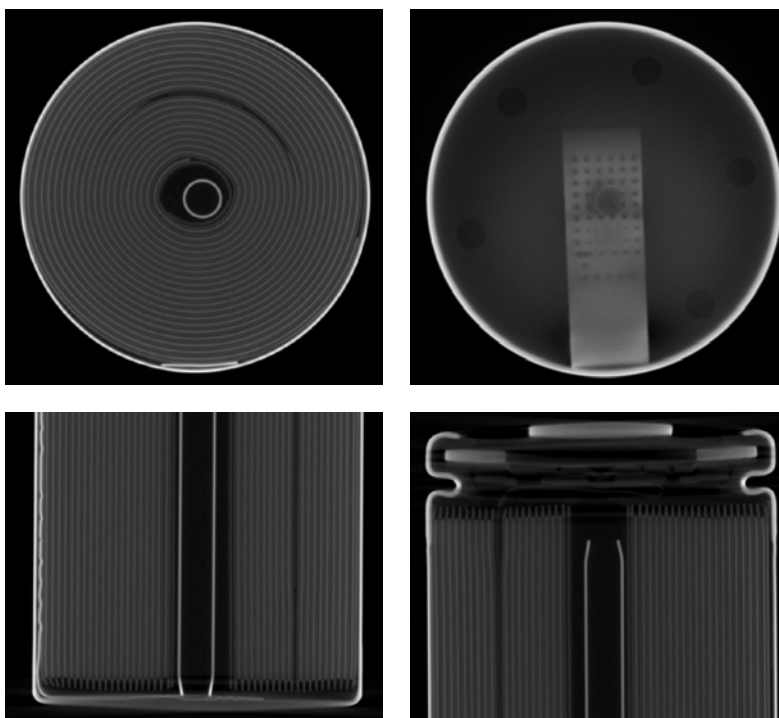


Figure 4. Samsung INR18650-35E

22
23

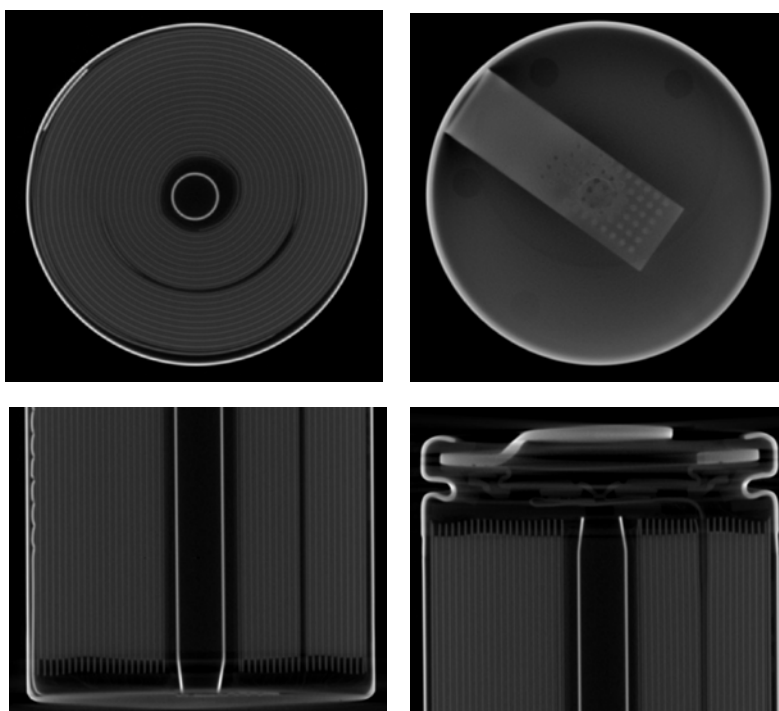


Figure 5. Samsung ICR 18650-22P

24
25

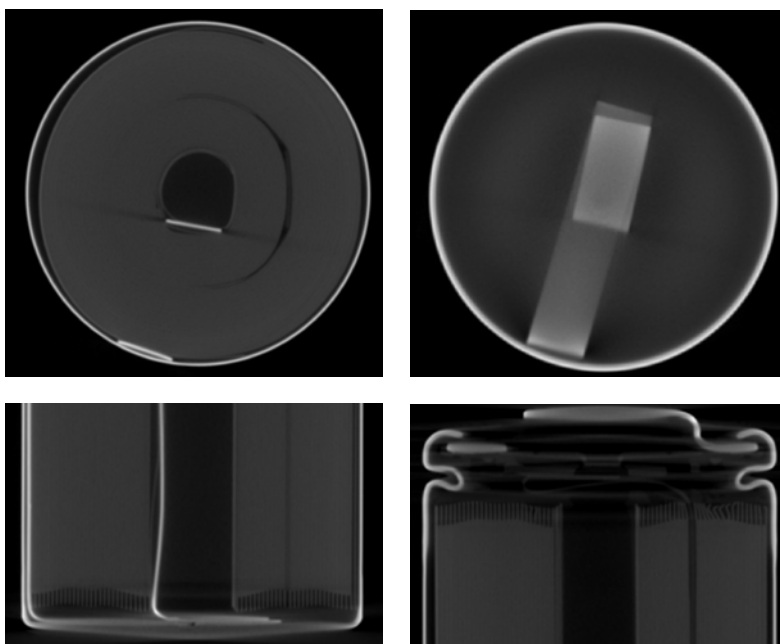


Figure 6. Sanyo UR18650RX

26
27

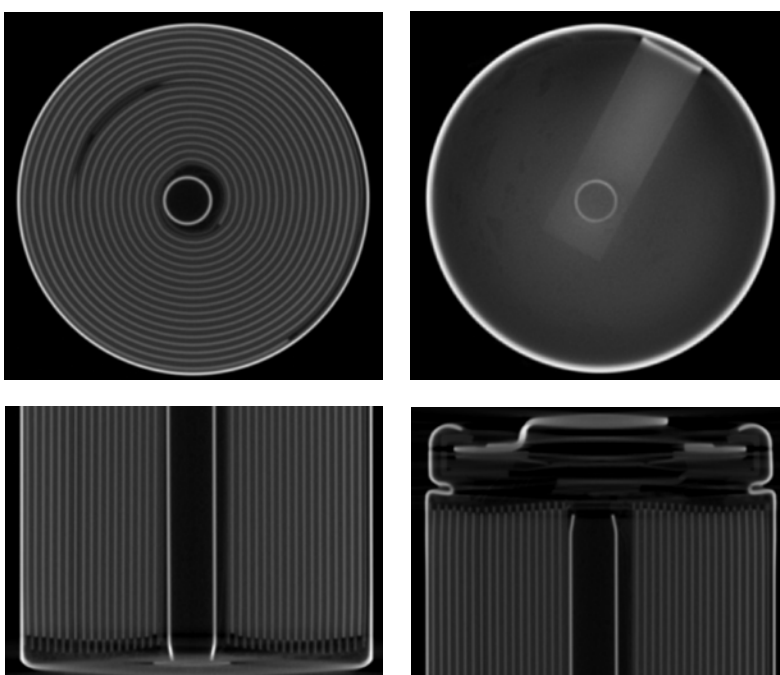


Figure 7. Panasonic NCR18650B

28
29

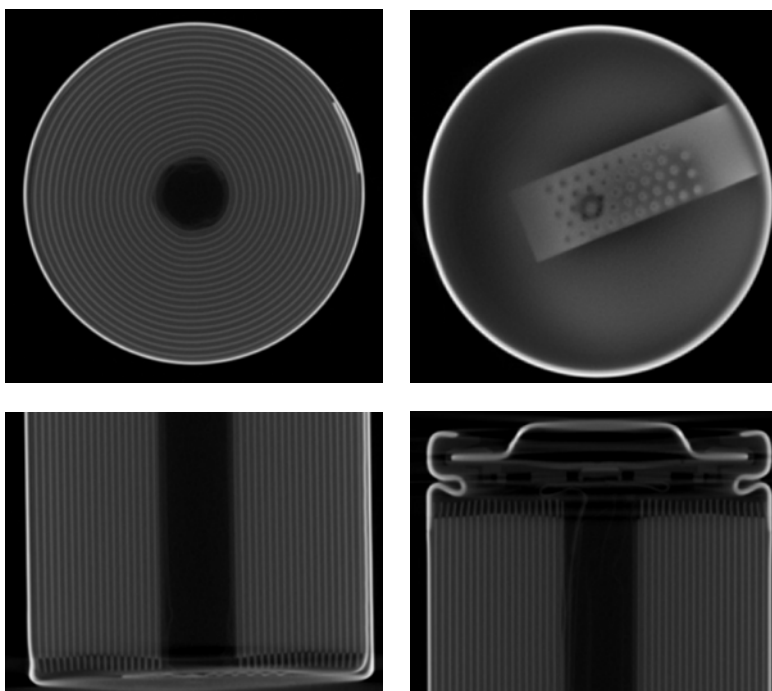


Figure 8. LG INR18650-MJ1

30

31

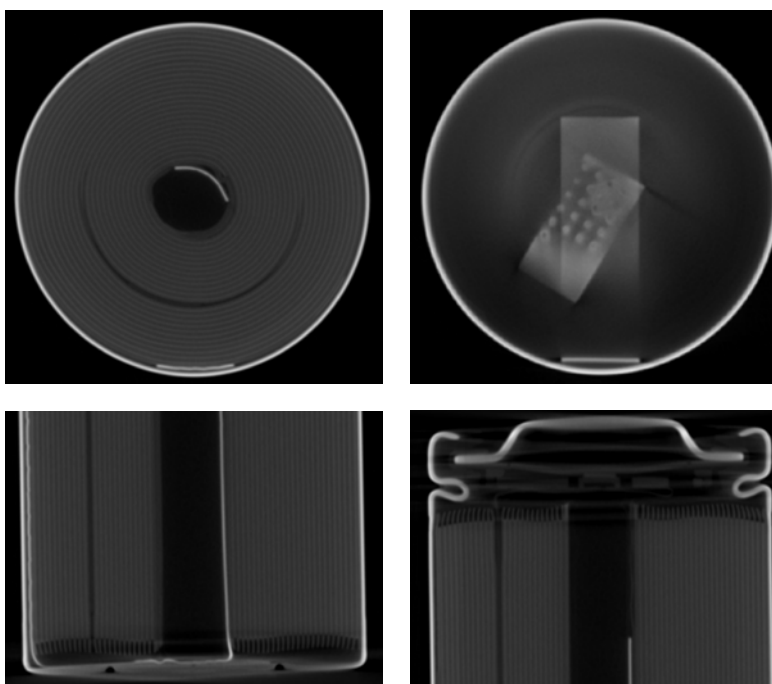


Figure 9. LG INR18650-HG2L

32

33

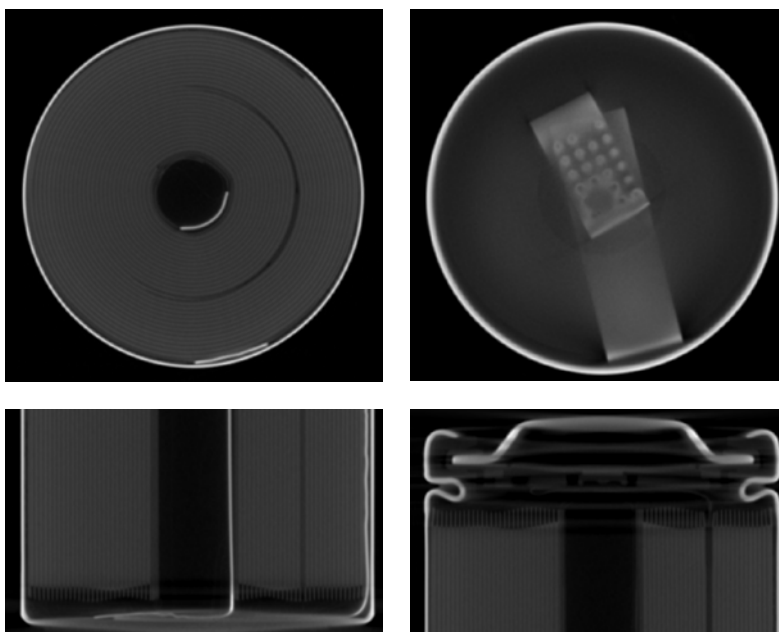


Figure 10. LG ICR 18650-HE2

34

35

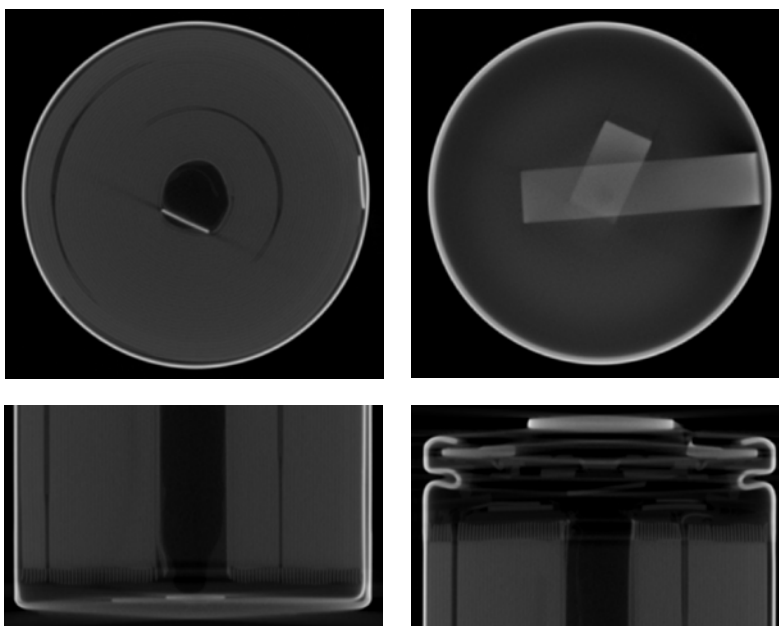


Figure 11. Sanyo Panasonic NCR2070C

36

37

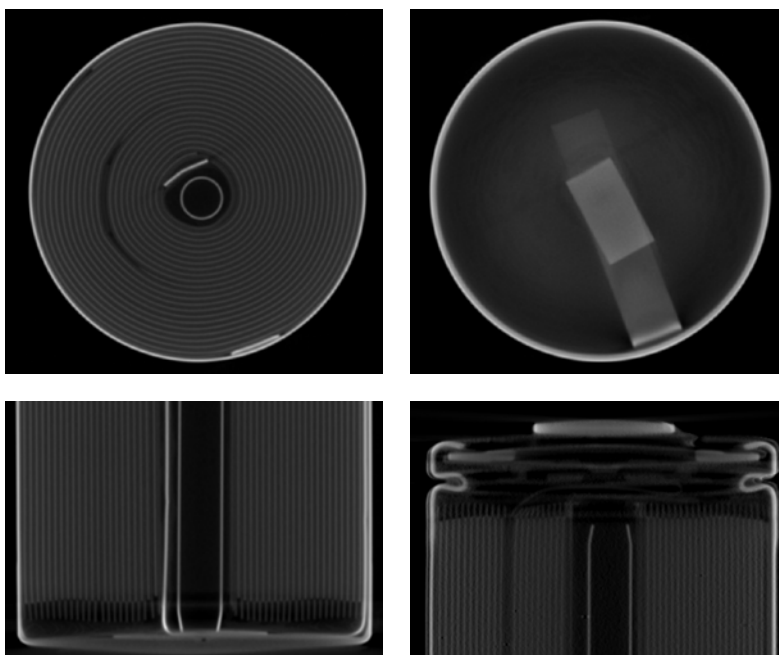


Figure 12. Panasonic NCR20700B

38

39

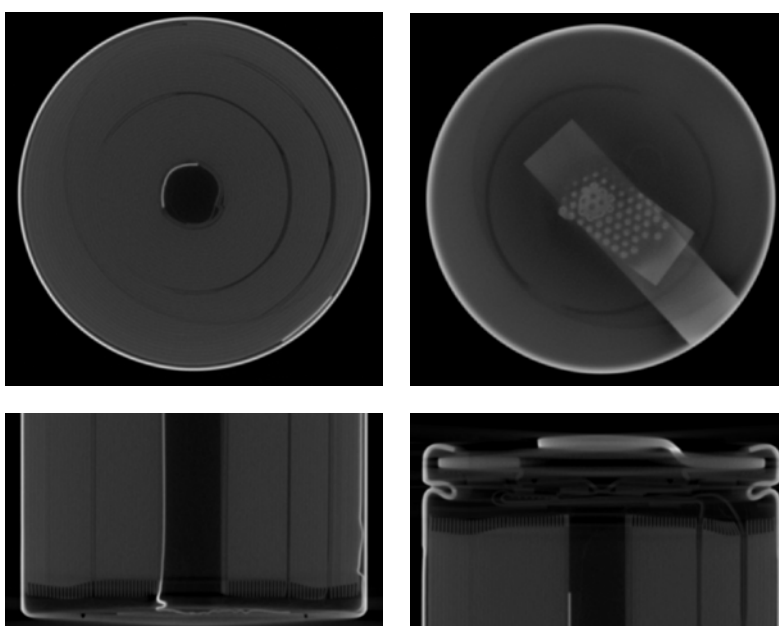


Figure 13. Sony / Murata US21700VTC6A

40

41

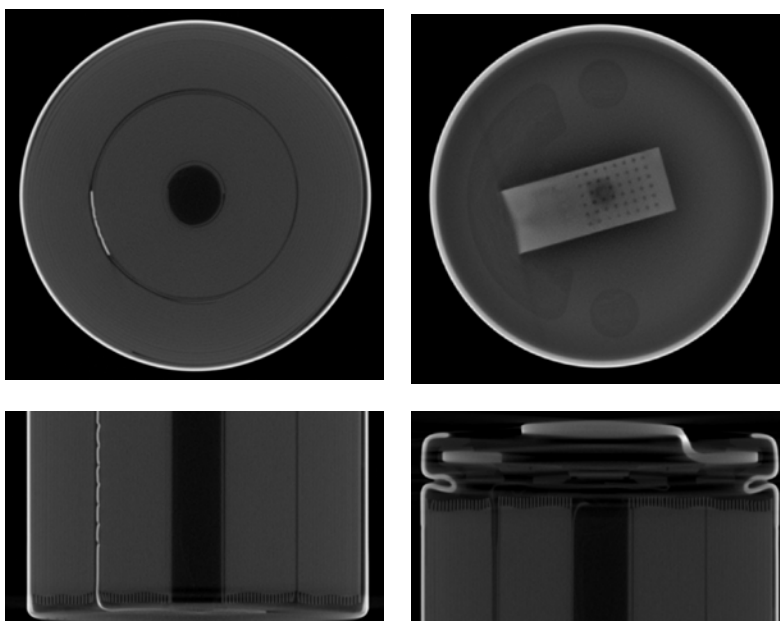


Figure 14. Samsung INR21700-40T

42

43

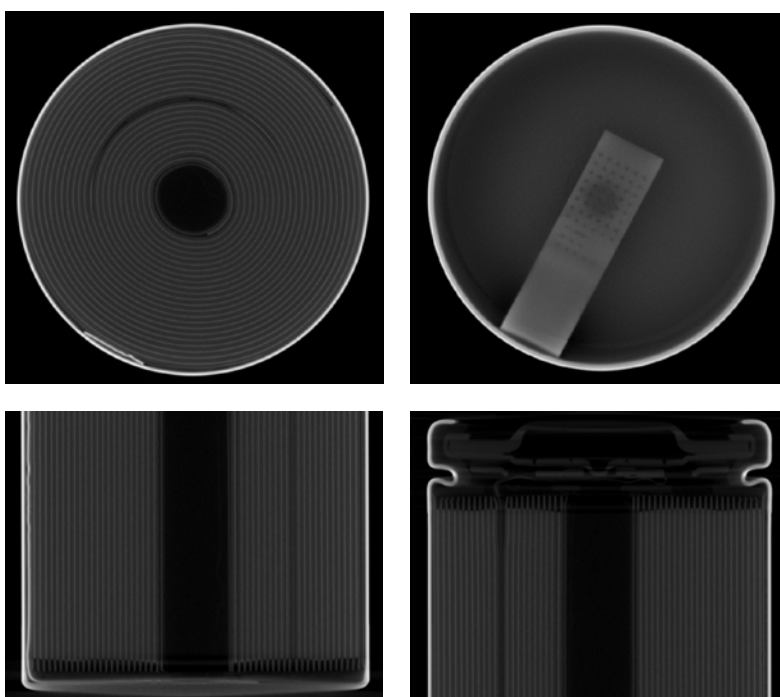


Figure 15. Samsung INR21700-33J

44

45

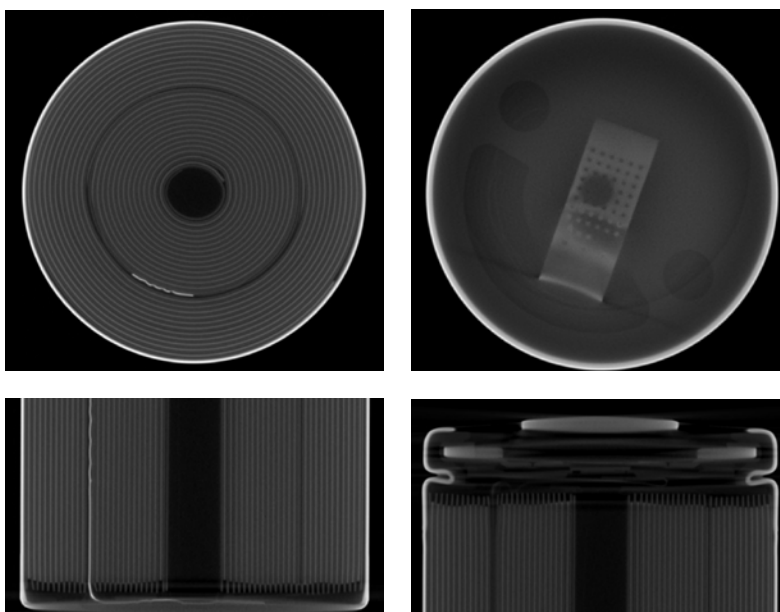


Figure 16. Samsung INR21700-50E

46

47

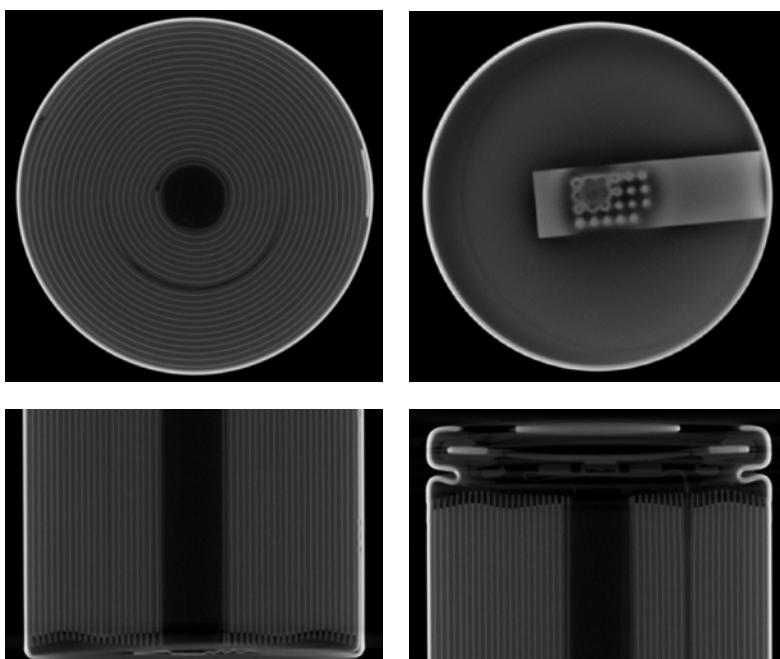


Figure 17. LG Chem INR21700-M50T

48

49

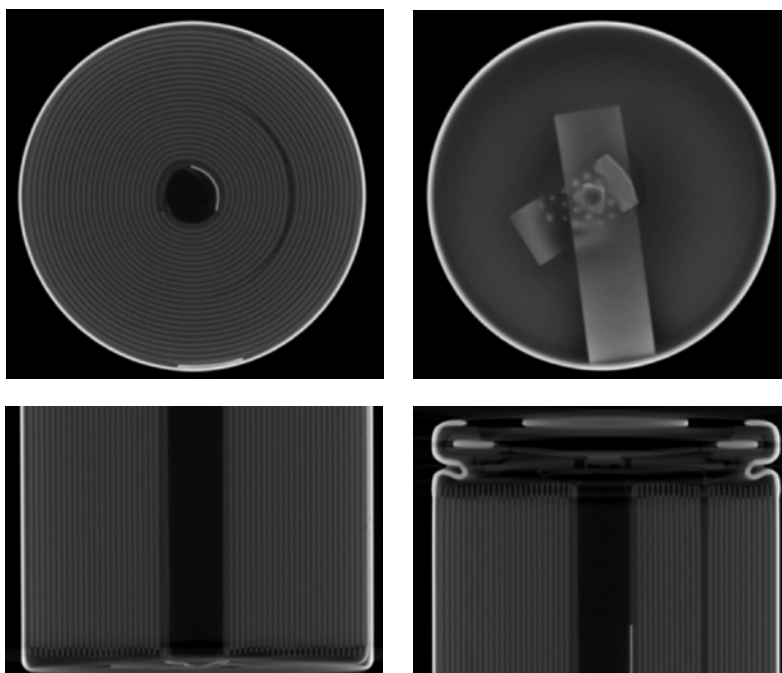


Figure 18. LG INR21700-M50LT