

Liens entre observations et recherche dans le Pacifique

ATELIER ILICO OUTRE-MER PACIFIQUE



Pacific
Community
Communauté
du Pacifique

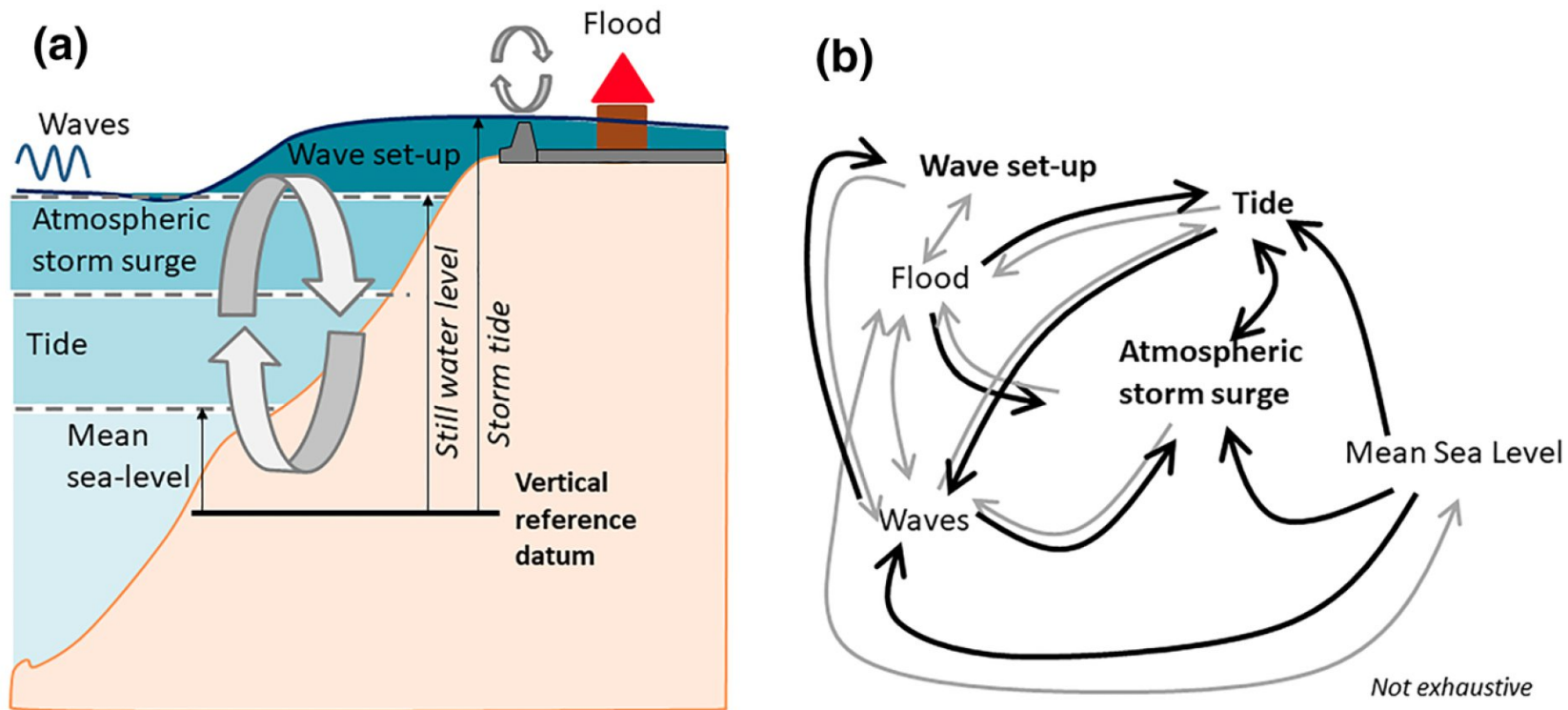
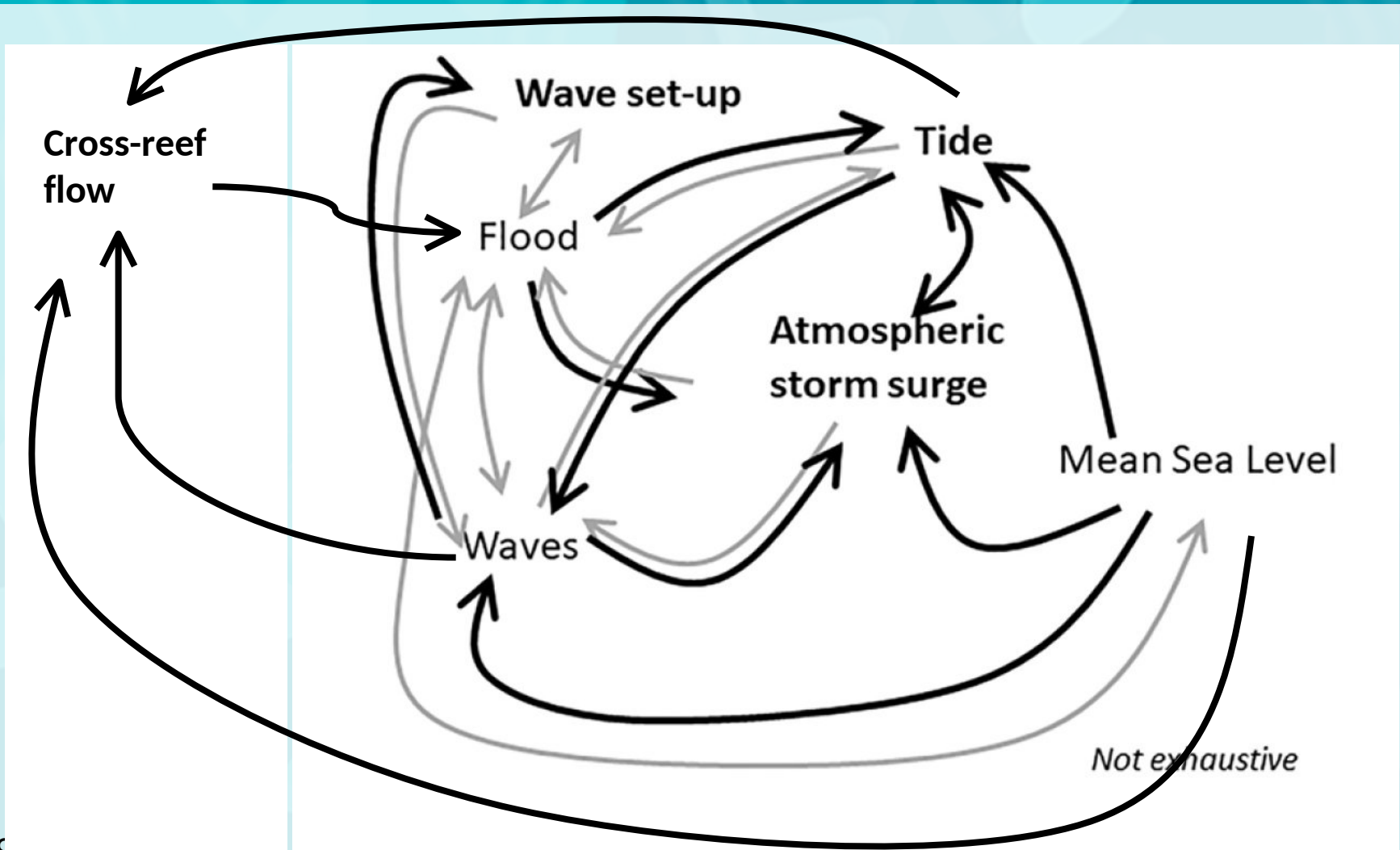


Fig. 1 **a** Components of storm tide, terminology and sketch of interactions. **b** Main interactions between mean sea level, waves, atmospheric storm surges, tide, wave setup and flooding. In bold and black: the focus of the present paper

Idier et al. 2019



Idier et al. 2019

Wave-driven flow over shallow reefs

Graham Symonds

Department of Geography and Oceanography, University College, Australian Defence Force Academy
University of New South Wales, Canberra, Australian Capital Territory, Australia

Kerry P. Black

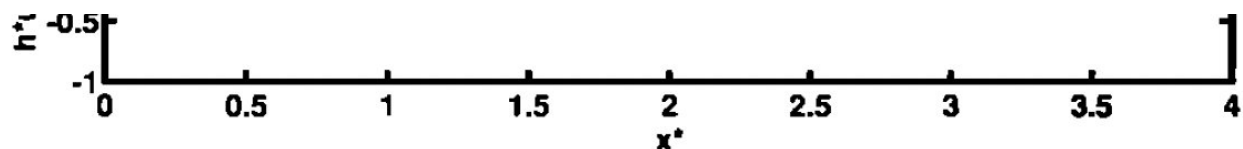
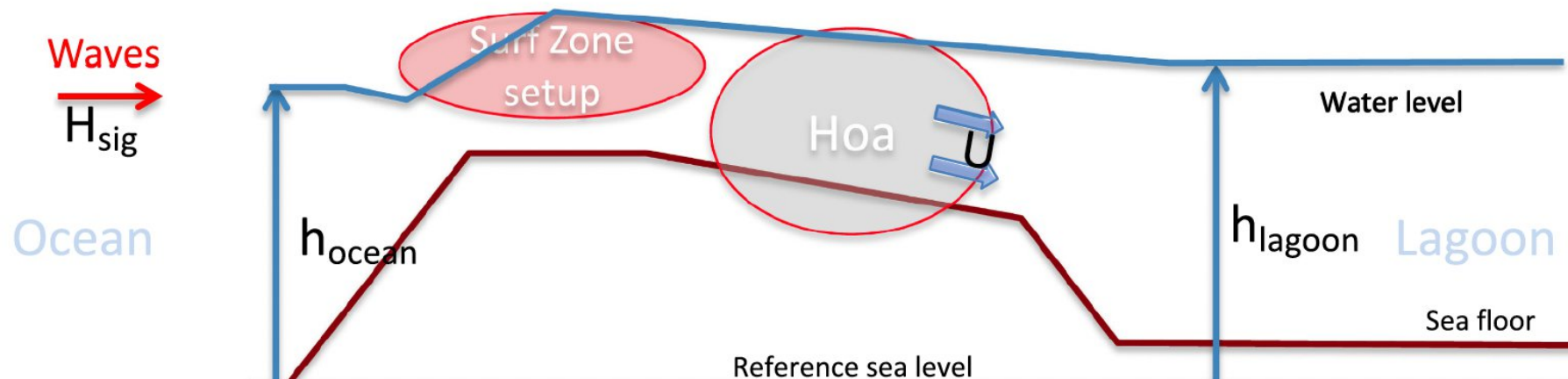
Victorian Institute of Marine Sciences, East Melbourne, Victoria, Australia

Ian R. Young

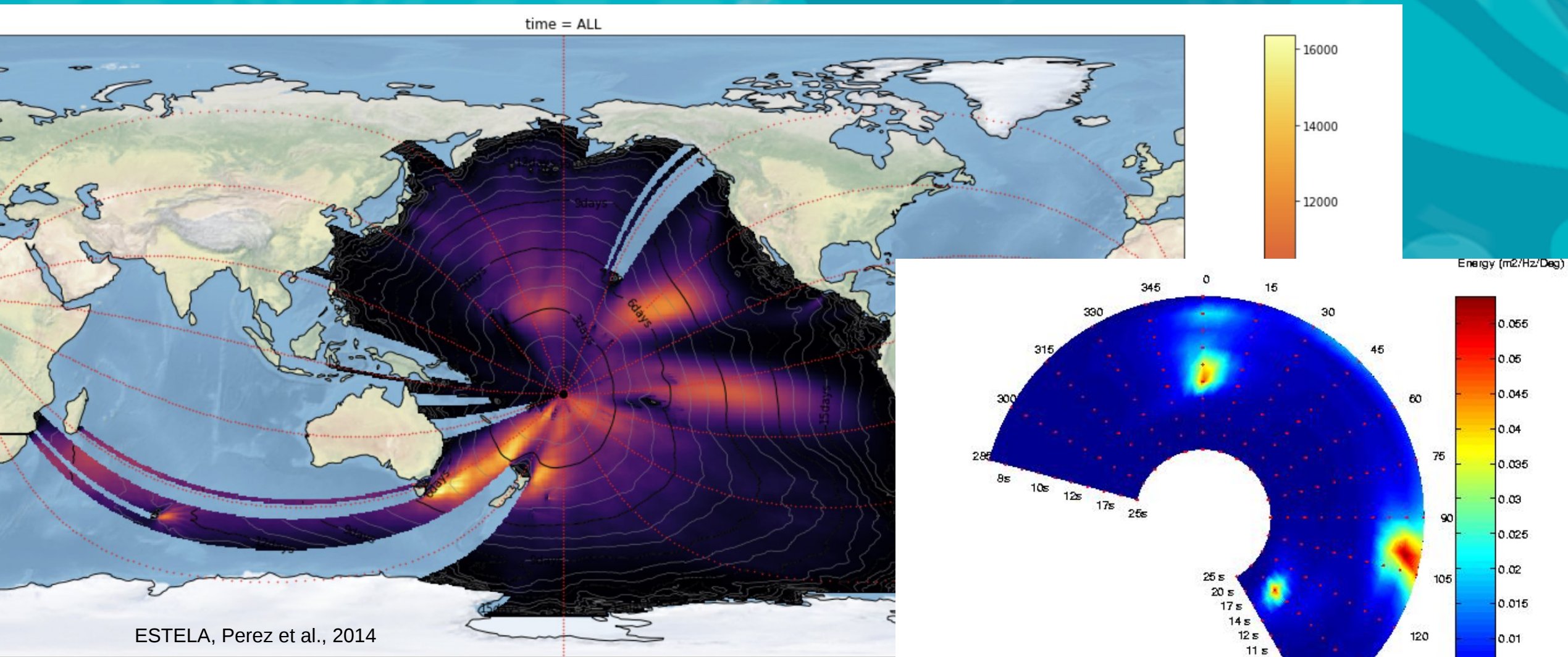
Department of Civil and Maritime Engineering, University College, Australian Defence Force Academy
University of New South Wales, Canberra, Australian Capital Territory, Australia

Radiation stresses in water with appl

M. S. LONGUET-HIGGI



Multiple source regions et multimodal sea-states



Islands are exposed to multiple swell sources



View PDF

Download full issue






Global and Planetary Change


Volume 108, September 2013, Pages 128-138



Widespread inundation of Pacific islands triggered by distant-source wind-waves

Ron K. Hoeke ^a   , Kathleen L. McInnes ^a, Jens C. Kruger ^b, Rebecca J. McNaught ^c, John R. Hunter ^{d f}, Scott G. Smithers ^e

Show more 

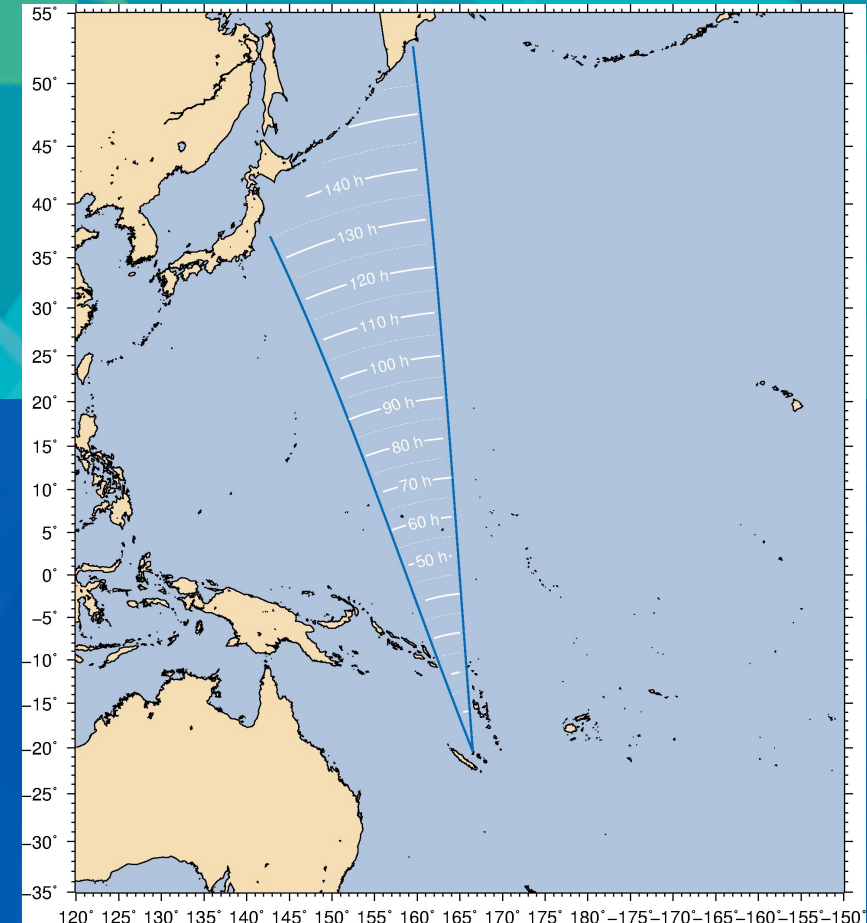
 Share  Cite

<https://doi.org/10.1016/j.gloplacha.2013.06.006>

[Get rights and content](#)

[Under a Creative Commons license](#)

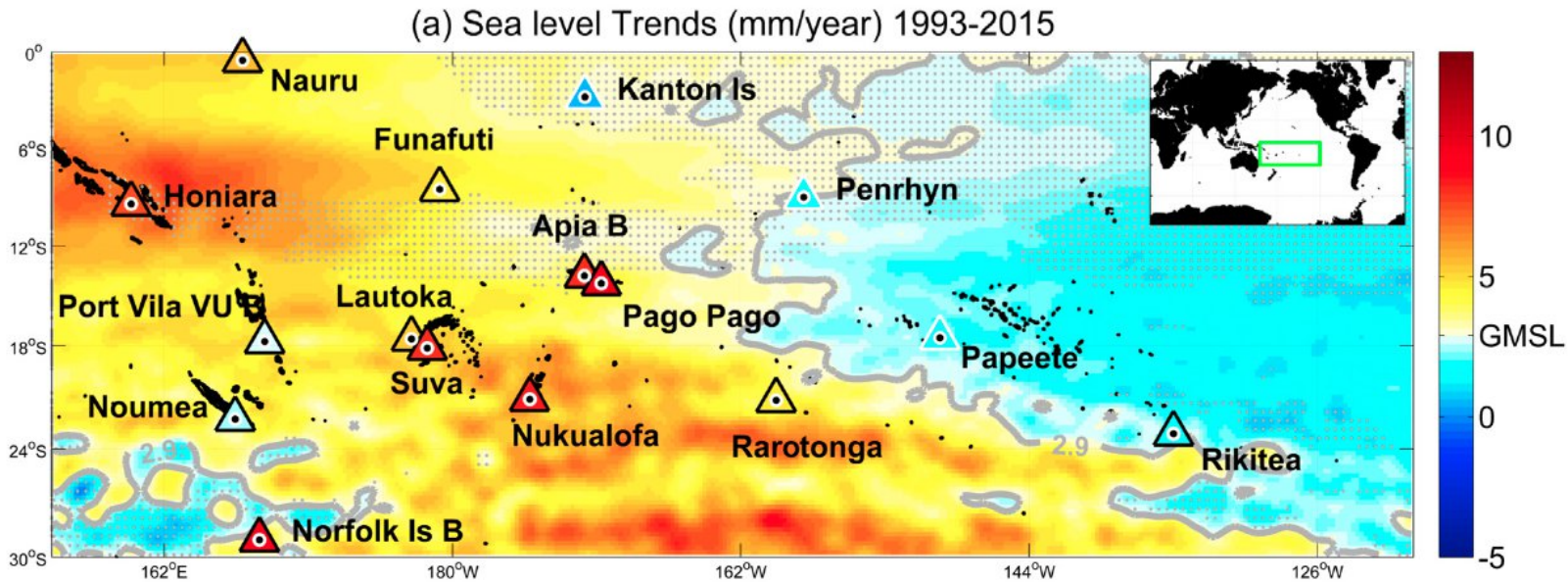
 open access



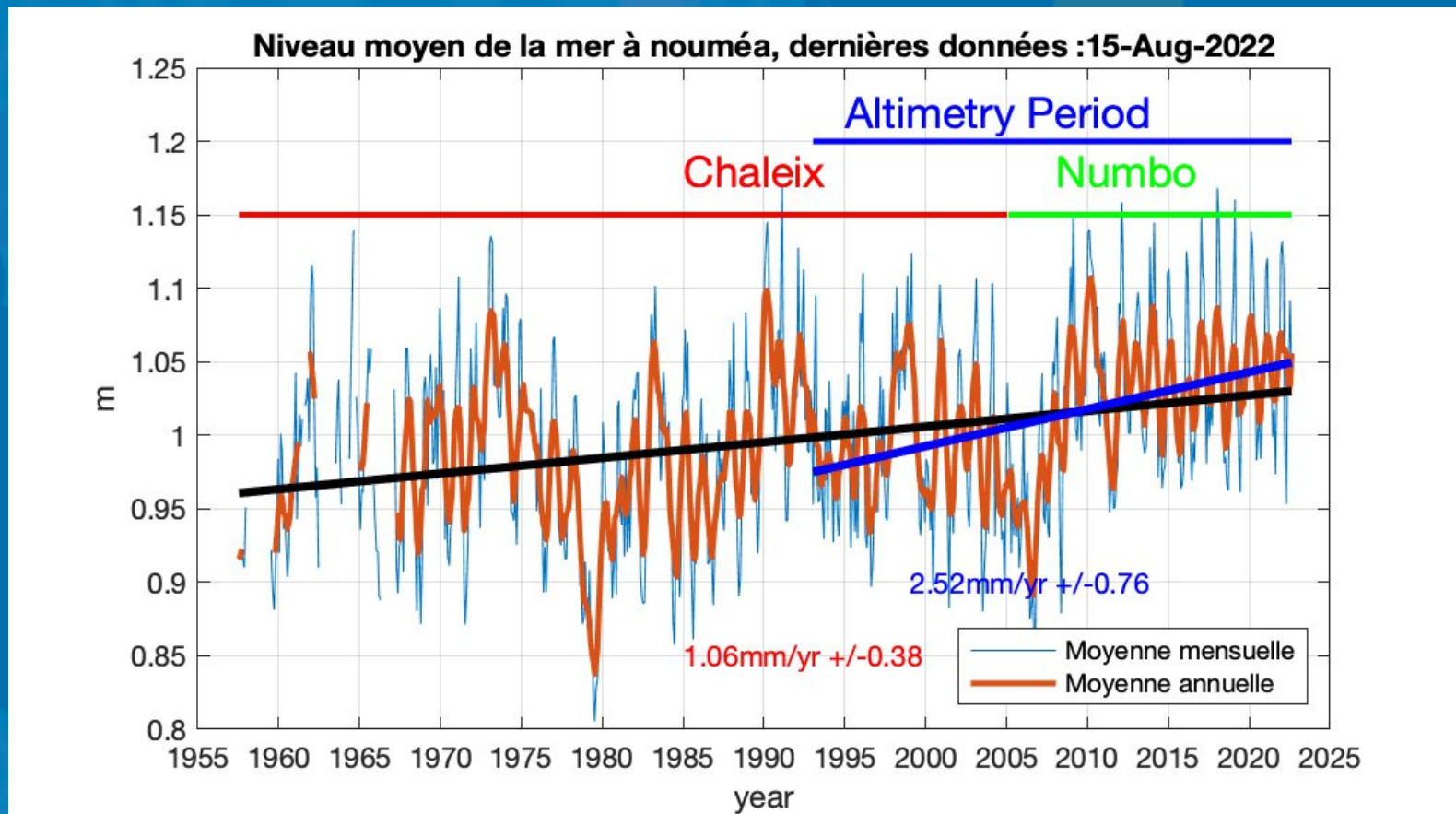
Absolute sea level, Relative Sea Level, and Vertical Land Movement

A. Martínez-Asensio, et al.

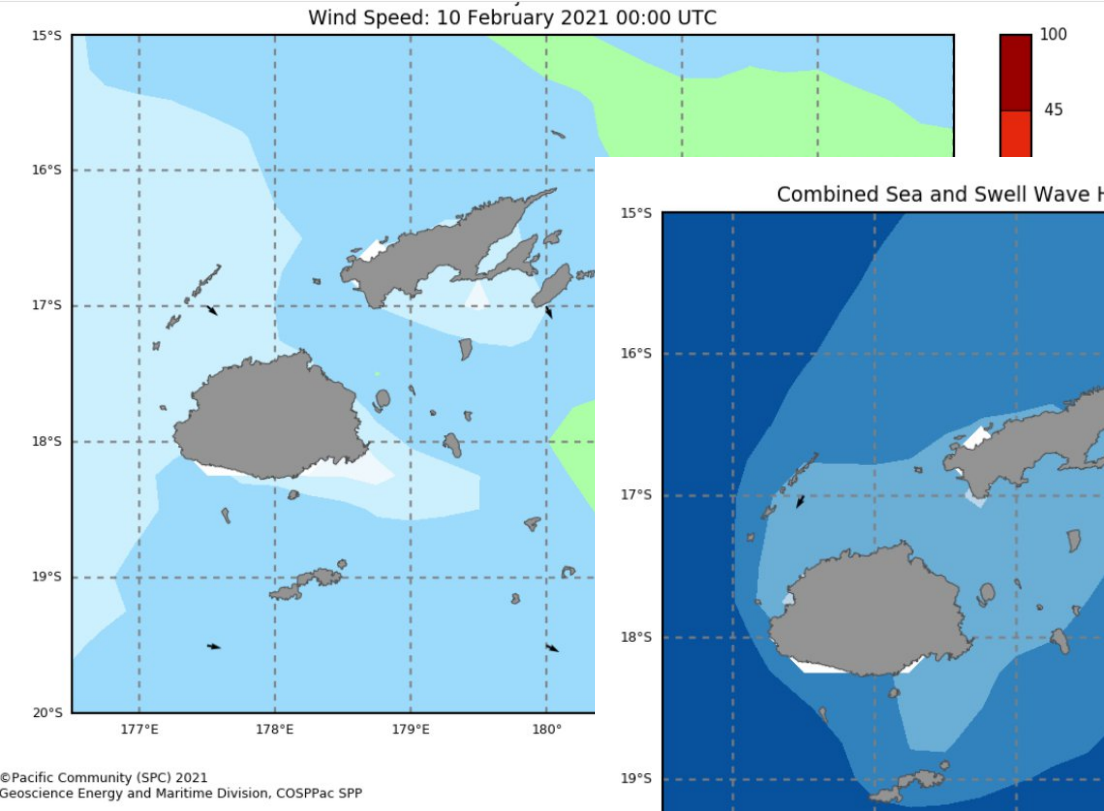
Global and Planetary Change 176 (2019) 132–143



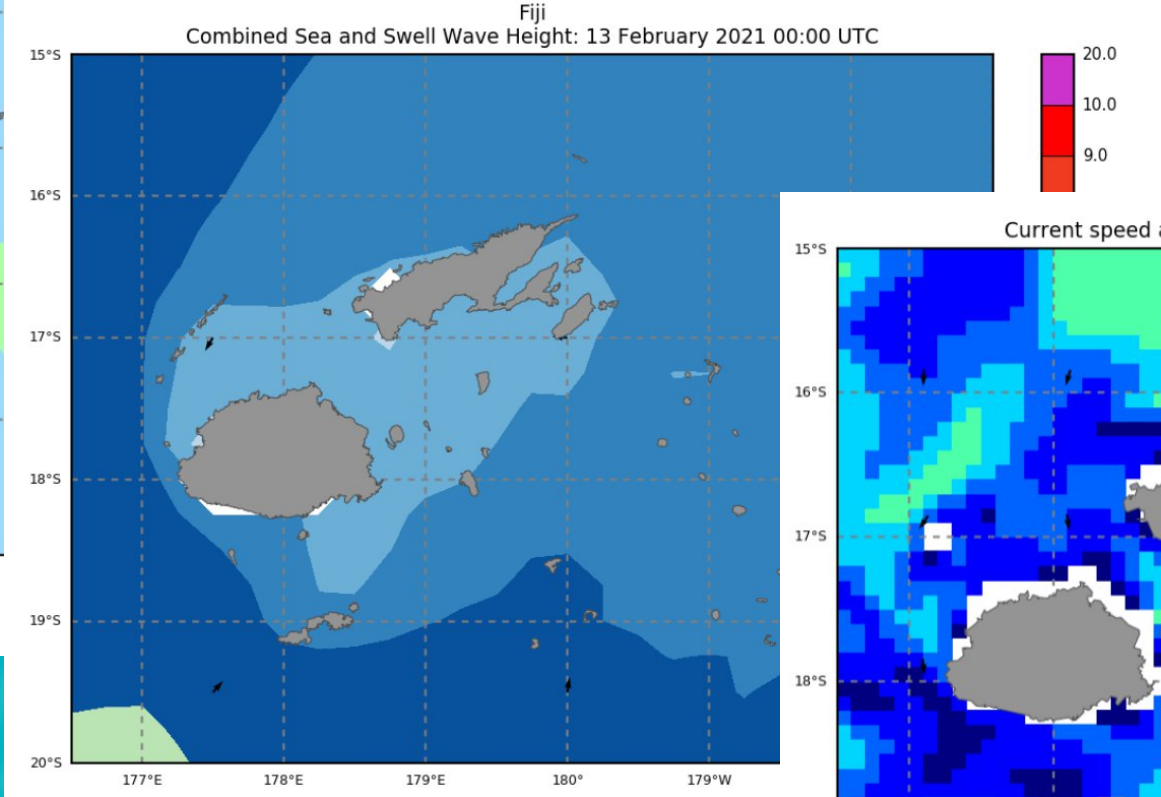
Interannual sea level variability



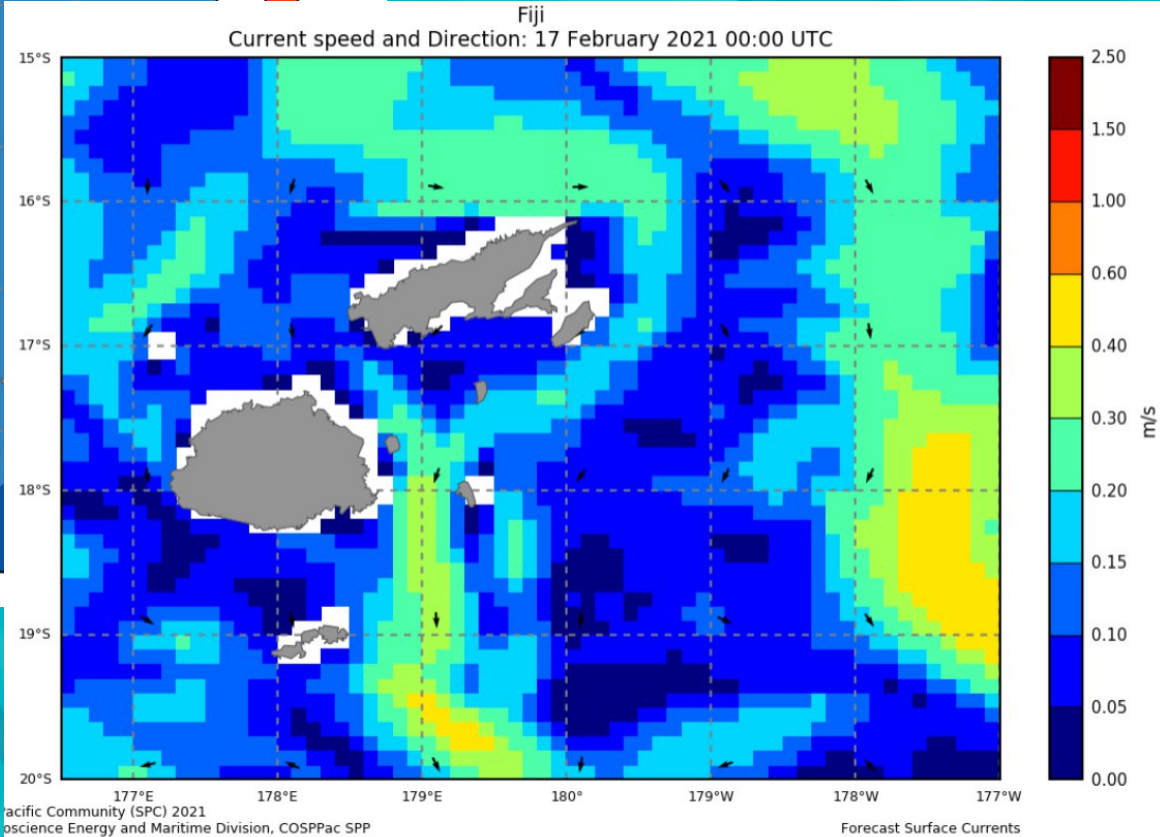
Global and regional ocean forecast products



Wind Forecast



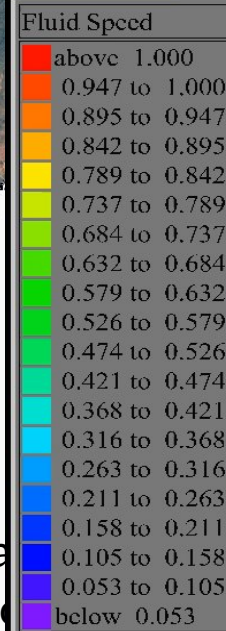
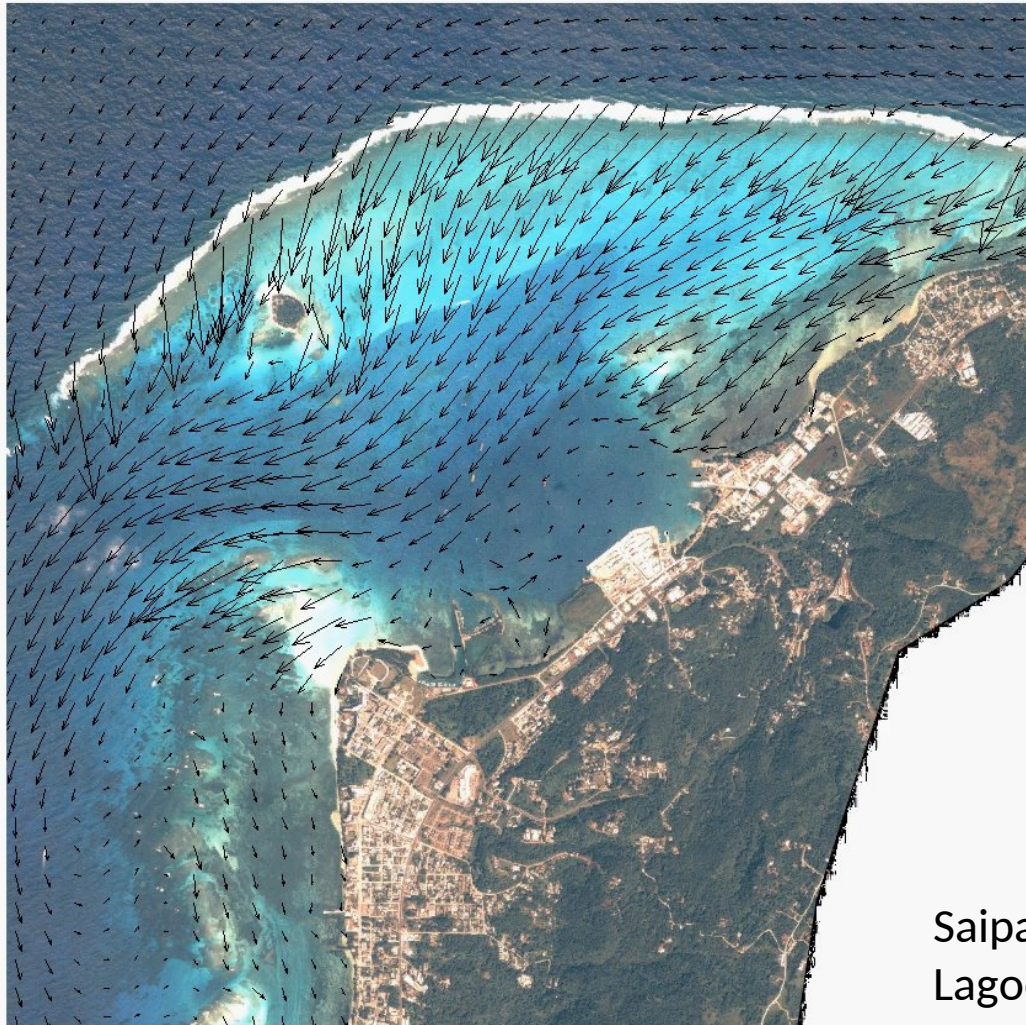
Wave Forecast



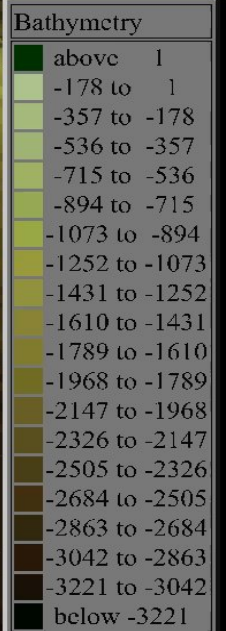
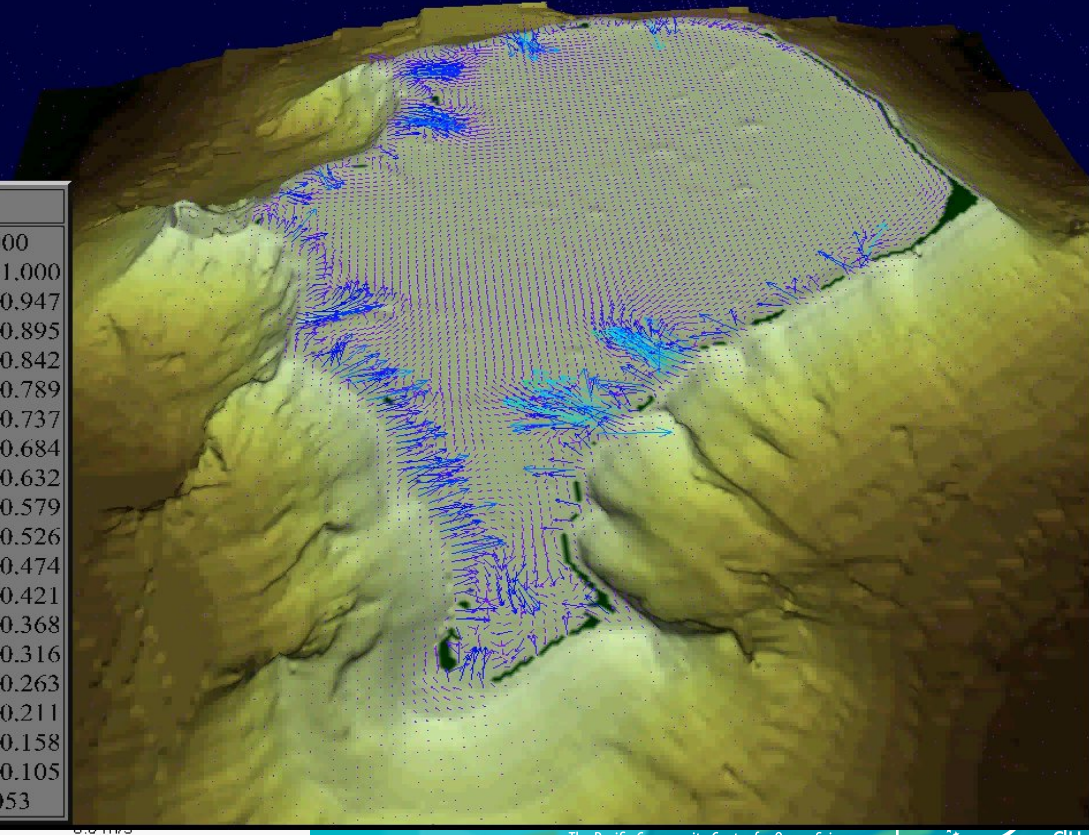
Ocean Current Forecast

High Resolution Ocean Current

NUMERICAL MODEL OF FUNAFUTI



Saipap
Lago



Tuvalu inundation forecast

