A large, jagged iceberg floats in the middle of a calm, blue sea. The sky is a clear, bright blue with some light, wispy clouds. The water reflects the blue of the sky and the white of the ice. The iceberg has several peaks and a complex, crystalline structure.

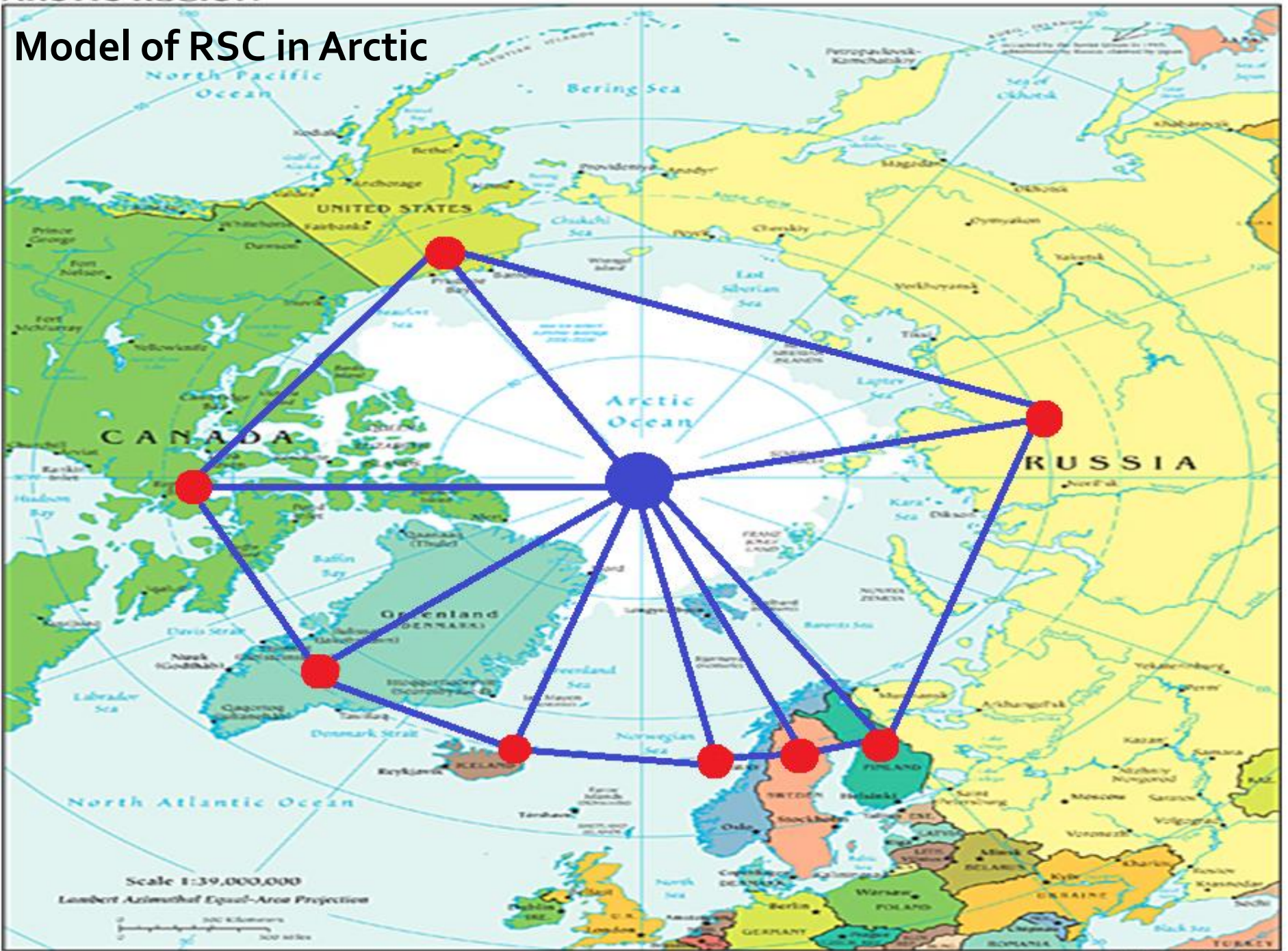
The Arctic Coast Guard Forum as an example of adaptation of the regional security complex in the Arctic in the context of climate change impacts

**Leszek Krzysztof Sadurski , MA
Maria Curie-Sklodowska University
in Lublin, Poland**

Regional Security Complex

- Subsystem of relations between states, referring to security at the regional level
- An attempt to fill the gap between the level of the international system and the state
- It is based on the relations of positive and negative interdependence between countries in the region

Model of RSC in Arctic



Security sectors (according to the theory of regional security complexes):

Before 2015:

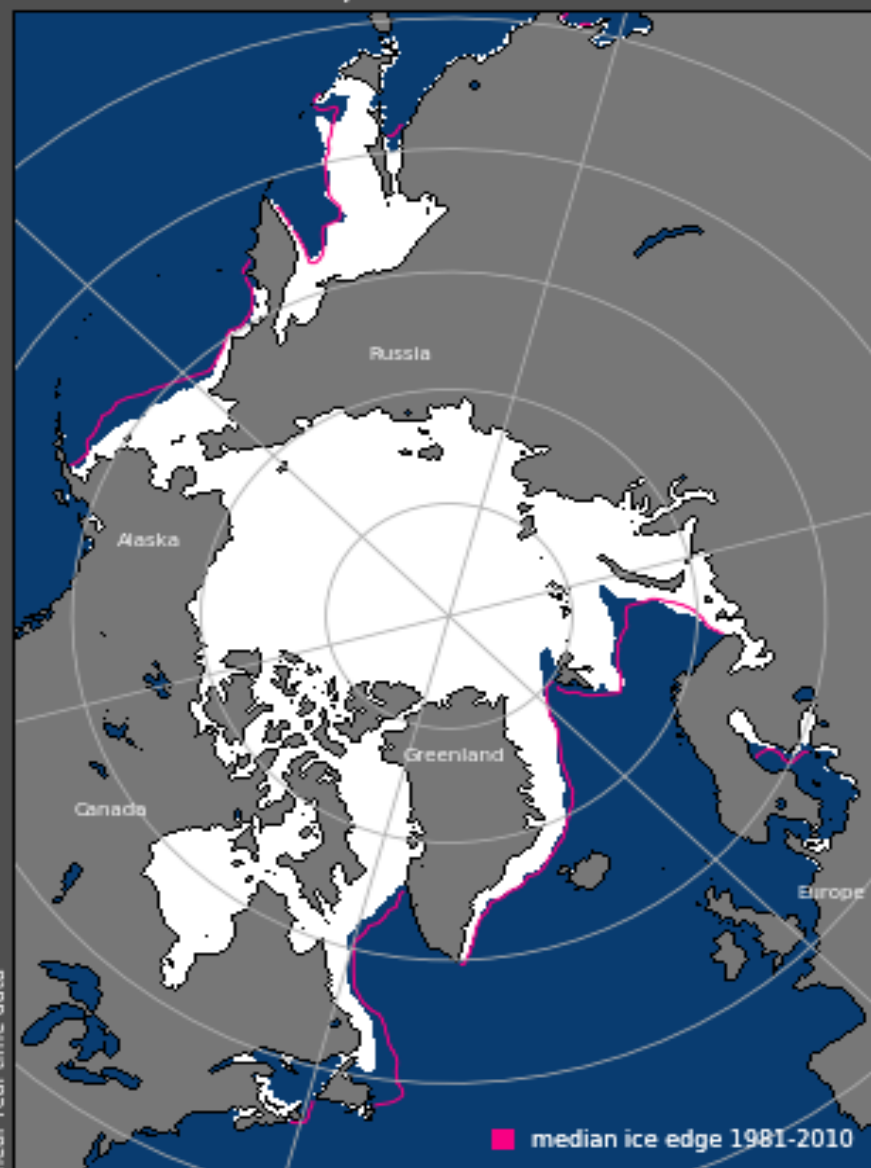
- Political
- Military
- Economic
- Societal
- Environmental

After 2015:

- Additional sector?

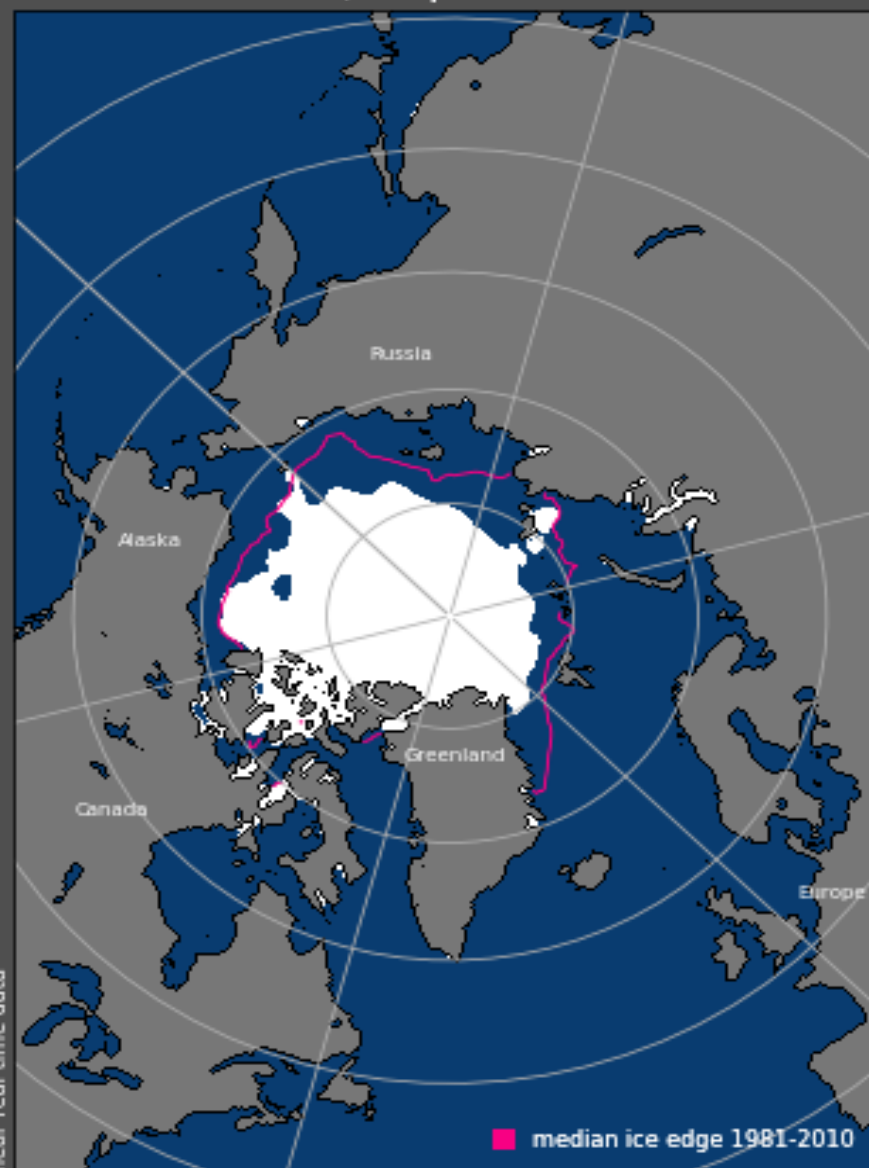
Sea ice extent

Sea Ice Extent, Mar 2021



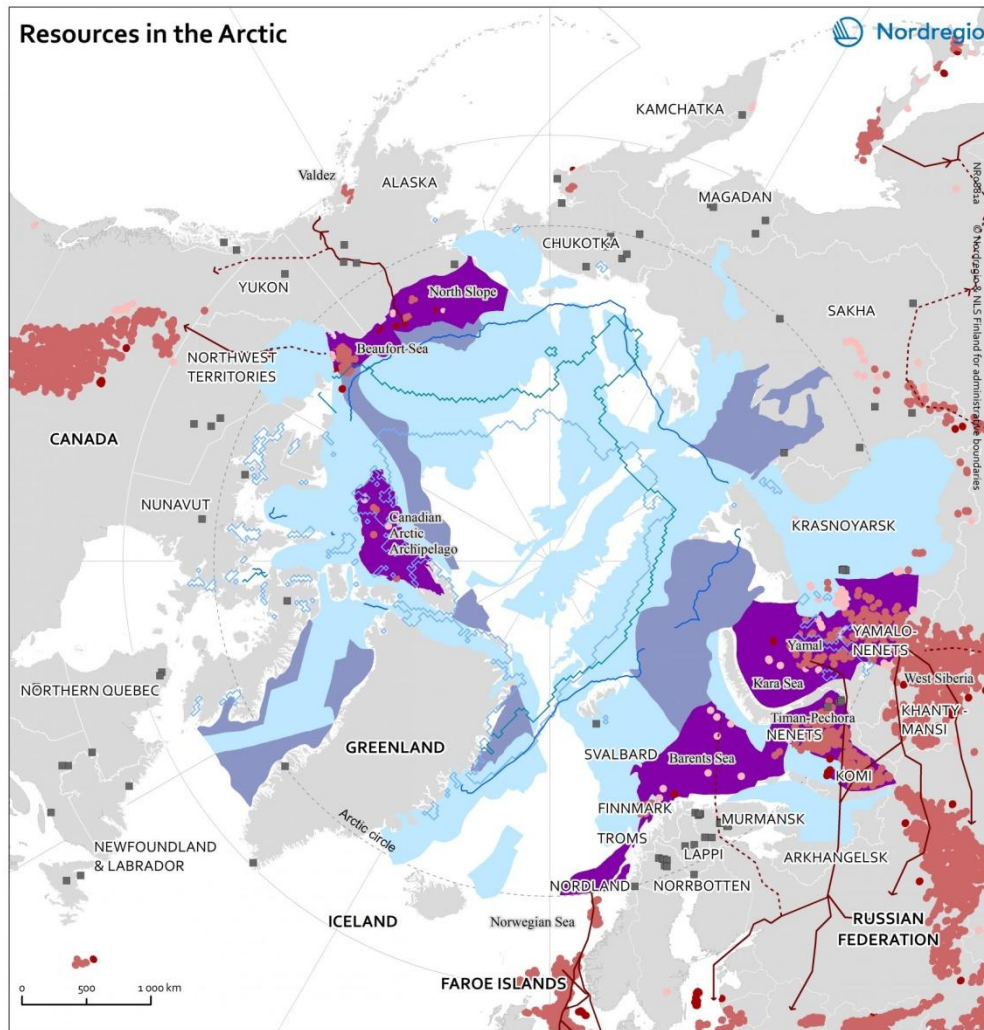
Total extent = 14.6 million sq km

Sea Ice Extent, Sep 2021



Total extent = 4.9 million sq km

Resources in the Arctic



Main oil and gas resources & mining activities in the Arctic

Oil/gas: exploration and production

- Gas
- Oil
- Oil and gas

Oil/gas: prospective areas and reserves

- <50% Probability that at least one accumulation of more than 50 million barrels of oil or oil-equivalent gas exists after USGS
- 50–99%
- 100% (including areas north of Arctic Circle)

- Main existing oil/gas pipeline (indicative direction)
- Main proposed oil/gas pipeline (indicative direction)
- Main mining site

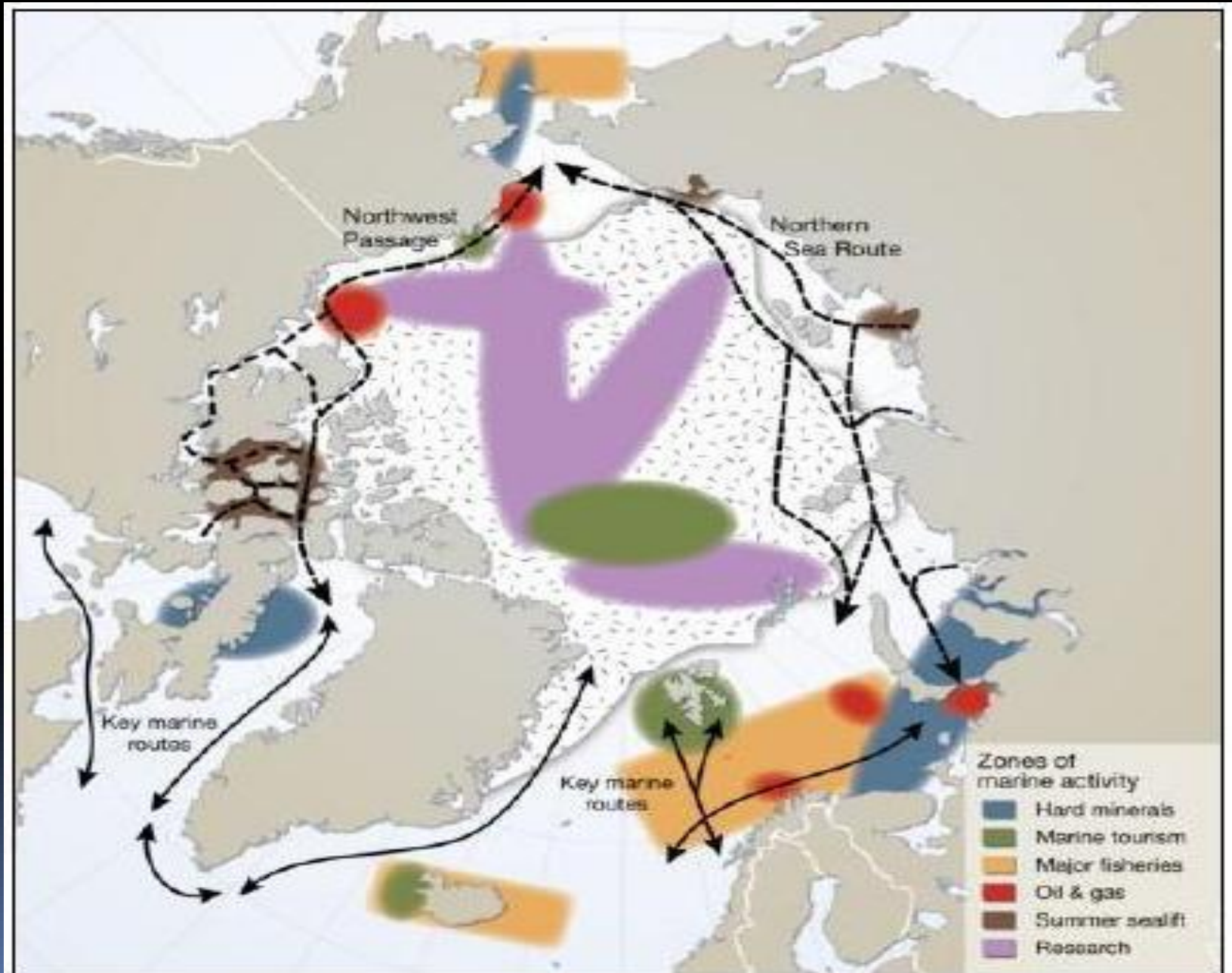
- Sea ice extent in September 2012
- Sea ice extent in September 2018
- Average sea ice extent for September in 1981–2010

Regions included:

US - Alaska; CA - Yukon, Northwest Territories, Nunavut, Northern Quebec, Newfoundland & Labrador; GL; IS; FO; NO - Nordland, Troms, Finnmark, Svalbard; SE - Norrbotten; FI - Lappi; RU - Murmansk, Arkhangelsk, Komi, Nenets, Khanty-Mansi, Yamalo-Nenets, Krasnoyarsk, Sakha, Kamchatka, Magadan, Chukotka.

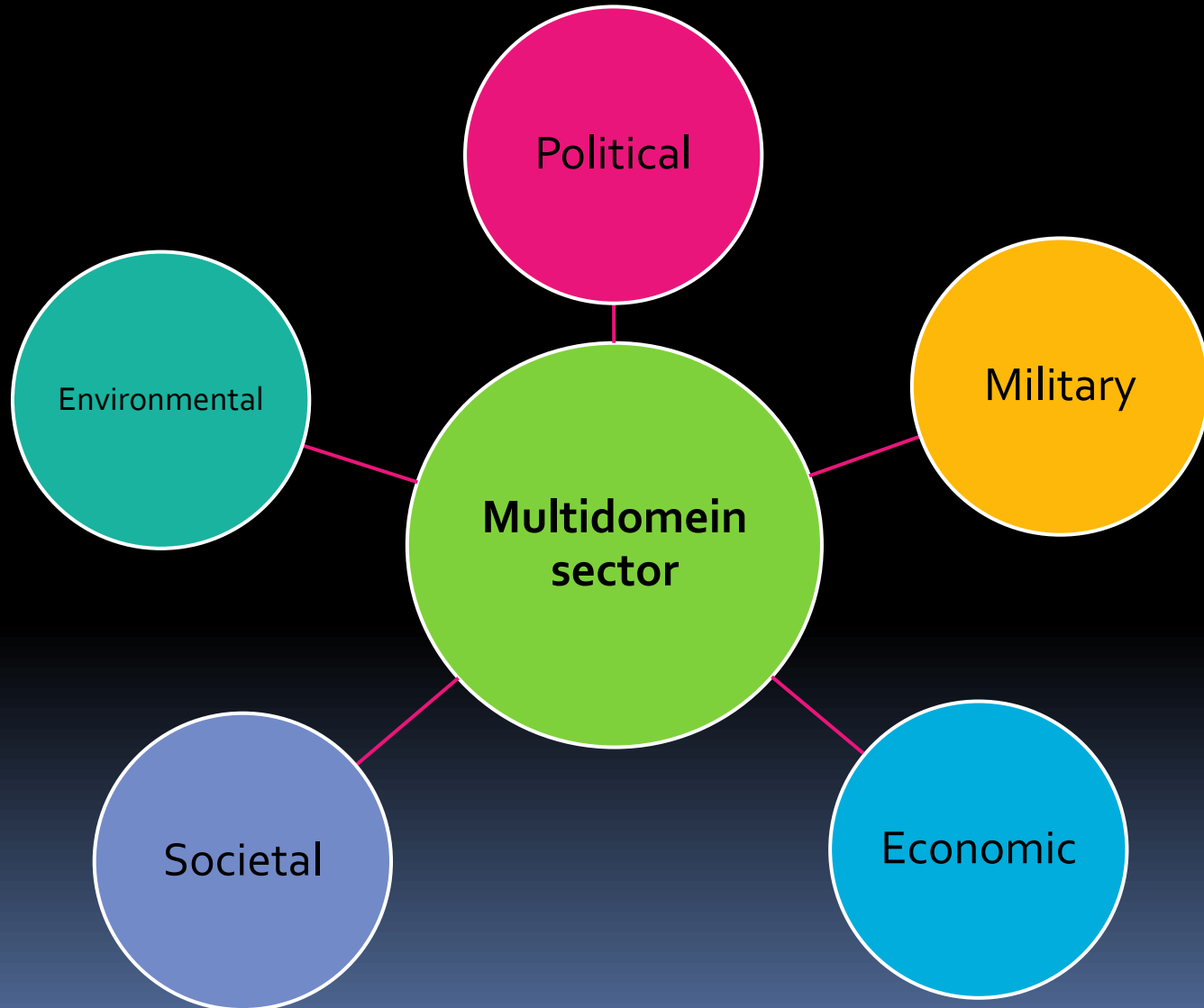
Data source: Nordregio, NSIDC, PRIO, United States Geological Survey USGS and several homepages for oil, gas and mining companies.

The possibilities of using the Arctic as a result of climate change



Kinds of RSC sectors	Occurence	Examples
Political	+	Arctic Council Nordic Council
Military	+	Northern Eagle 2012 Operation Nanuuk 2012
Economic	+	Cooperation between Exxon Mobil and Rosnieft on the Kara Sea, Laptev Sea and Chukchi Sea
Societal	+	Cooperation of arctic countries with indigenous peoples on the forum of the Arctic Council
Environmental	+	Working Groups of the Arctic Council: Protection of the Arctic Marine Environment, Arctic Contaminants Action Program

Additional RSC's sector -Multidomein sector



Kind of new RSC sector	Types of merged sectors	Occurence	Example
Multidomain	Political Environmental Military Societal	+	Arctic Coast Guard Forum



Thank You for attention!

