

The Alan Turing Institute

Open science for enabling reproducible,
ethical and collaborative research:

Insights from The Turing Way

Malvika Sharan

Pronouns: she/her



Shared spaces create shared experiences



Where You Are Is Who You Are? The Geographical Account of Psychological Phenomena. *Frontiers in Psychology*, doi: 10.3389/fpsyg.2020.00536, Image: FES | Foundation for Ecological Security. Annual Report 2019-2020, Picture by Dilip Kumar Champi

Shared spaces create shared experiences

Commons (*noun*)



Shared spaces create shared experiences

Commons (*noun*)

Land or resources belonging to or affecting the whole of a community.



Basu, S., Jongerden, J., & Ruivenkamp, G. (2017). Development of the drought tolerant variety Sahbhagi Dhan: exploring the concepts commons and community building. *International Journal of the Commons*, 11(1). doi: 10.18352/ijc.673, FES | Foundation for Ecological Security. Annual Report 2019-2020, Picture by Dilip Kumar Champi, <https://fes.org.in>

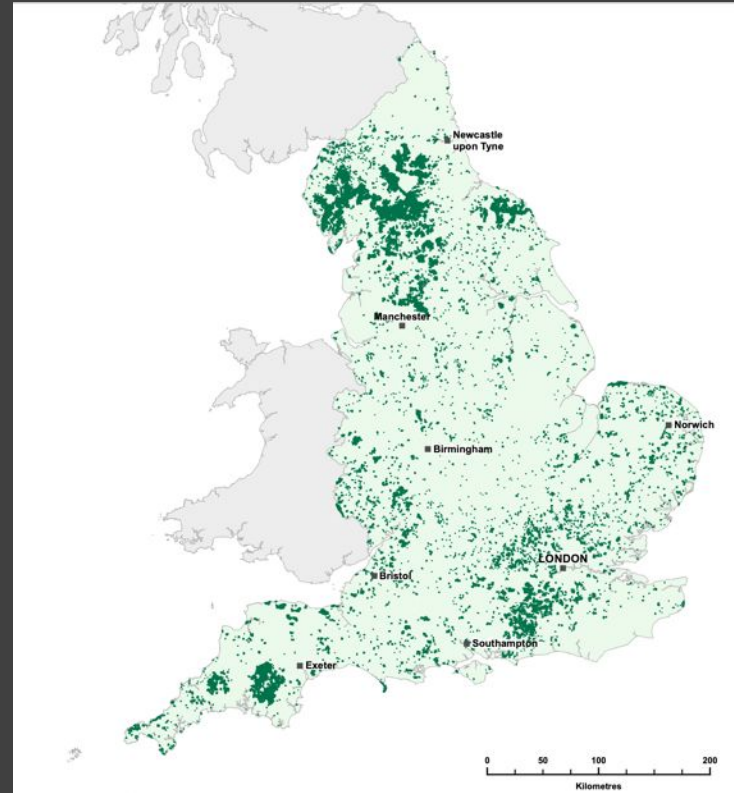
Commons in the UK



Commons Registration Act 1965

Registration of rights to common land, town greens, and village greens in England and Wales.

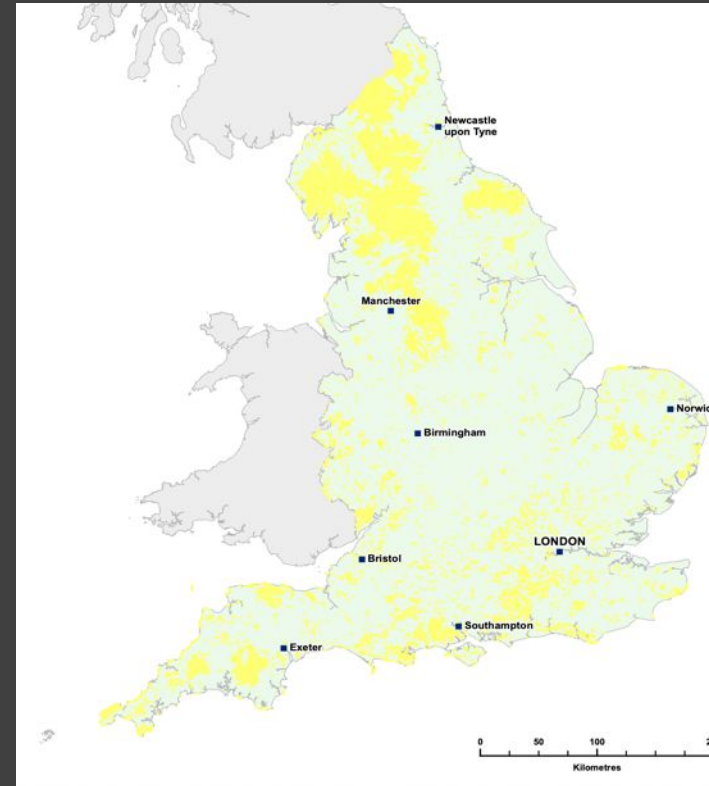
Open Spaces Society (earlier Commons Preservation Society, 1899) worked to register common lands & rights.



Participatory processes to manage the Commons



Historical Ramblers group, 1935 (CC BY 4.0 License)
www.ramblers.org.uk/, *Represented Walker's Right*



*1949 National Parks and Access to the Countryside Act,
Countryside and Rights of Way Act 2000, Marine and
Coastal Access Act 2009*

Participatory processes to manage the Commons



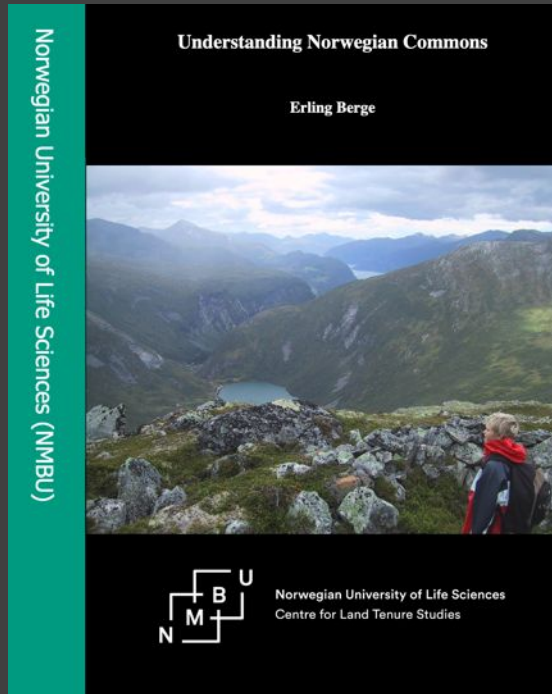
The Commons Movement - Schumacher Center for New Economics. <https://centerforneweconomics.org/apply/the-commons-program/movement>
Verdun's Ethel Parking Lot – rooftop for local culture, Montréal's participatory budget. <https://www.makingmtl.ca/participatorybudget>

Participatory processes to manage the Commons



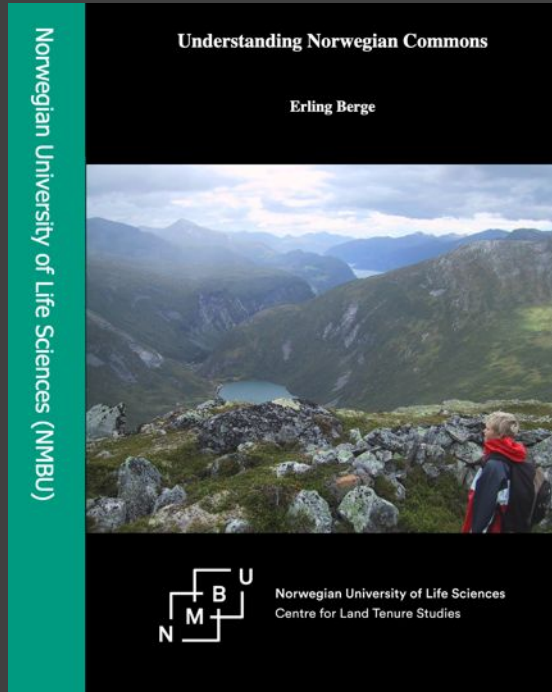
The Commons Movement - Schumacher Center for New Economics. <https://centerforneweconomics.org/apply/the-commons-program/movement>
Verdun's Ethel Parking Lot – rooftop for local culture, Montréal's participatory budget. <https://www.makingmtl.ca/participatorybudget>

Emergence of commons in industrialised countries



<https://operaen.no/om-oss/om-operahuset/>, Berge, E. (2018). Understanding Norwegian commons. Norwegian University of Life Sciences, Ås.
Berge, E., & Mckean, M. (2015). On the commons of developed industrialized countries. *International Journal of the Commons*, 9(2). doi: 10.18352/ijc.650

Emergence of commons in industrialised countries




Et operahus for alle: *visjon om operahuset som en allmenning*

UNESCO calls for COVID-19 vaccines -- global public good



Global vaccines equity and solidarity:
For a fair, equitable and timely allocation
of COVID-19 vaccines in Africa



SHS/BIO/IBC-COMEST/COVID-19 Vaccines
Paris, 24 February 2021
Original: English

**UNESCO'S ETHICS COMMISSIONS' CALL FOR
GLOBAL VACCINES EQUITY AND SOLIDARITY**

**Joint Statement by the
UNESCO International Bioethics Committee (IBC)
and the
UNESCO World Commission on the Ethics of Scientific Knowledge and
Technology (COMEST)**

- 1) www.unesco.org/en/articles/unesco-calls-covid-19-vaccines-be-considered-global-public-good, 2) International Bioethics Committee, (2021). COVID-19 vaccines as global public goods. (2021).
- 3) Global vaccines equity and solidarity: for a fair, equitable and timely allocation of COVID-19 vaccines in Africa.
- 4) UNESCO mobilizes 122 countries to promote open science and reinforced cooperation in the face of COVID-19.

Governing the Commons: Elinor Ostrom



Extensively researched communities and provided principles for how commons can be governed equitably and sustainably – debunking “Tragedy of the Commons”.

2009 Nobel Laureate
(1933-2012)

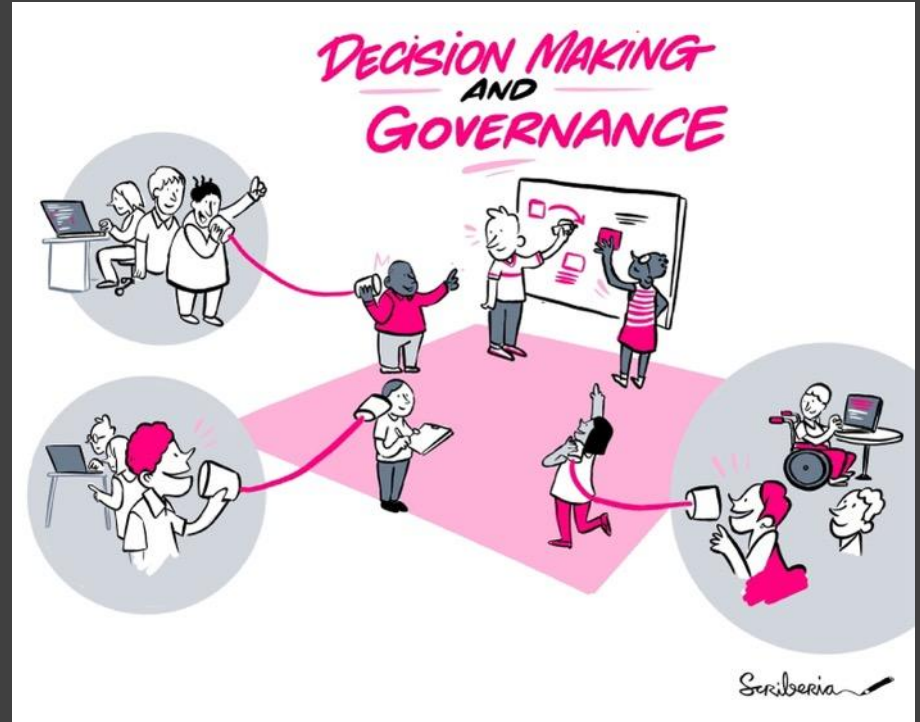
Knowledge Commons

*Information, data, and content that is **collectively owned and managed by a community of users** - without depleting their quantity or quality.*

- To **whom does knowledge/privilege belong?**
- **Who benefits** from the production and circulation of knowledge?
- **Who gets to participate** in the knowledge production processes?
- In what ways can systems be used to **increase the agency of more people** over knowledge production, circulation and benefits?

Collective benefits

Digital Commons include free and open source software, open access journals, community-led projects and platforms – part of **Open Science**.



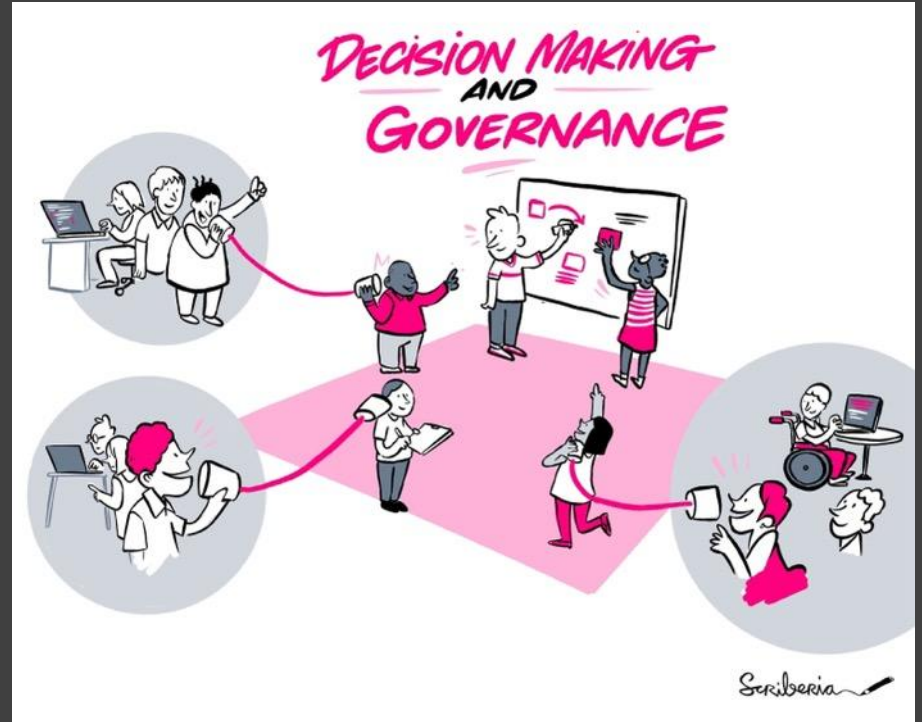
Digital commons | David Bollier. Retrieved from <http://www.bollier.org/category/tags/digital-commons>

@malvikasharan, @turingway, Image by Scriberia for The Turing Way , CC-BY 4.0, Zenodo: <https://zenodo.org/record/7716933>

Collective benefits

You already know and practice openness.

Open Science as a common language merely validates what others may consider marginal or inconsequential.



Open Science

Everyone can **freely access, reuse, reproduce, build upon and distribute** research objects.



Kelly, Anthony, "With Head, Heart and Hand: Dimensions of Community Building" (Boolarong Press) ISBN 978-0-86439-076-9,
Wenger, McDermott, Snyder, A Guide to Managing Knowledge: Cultivating Communities of Practice. HBS (2002)
@malvikasharan, @turingway, Image by Scriberia for The Turing Way , CC-BY 4.0, Zenodo: <https://zenodo.org/record/7716933>

Open Science

Everyone can **freely access, reuse, reproduce, build upon and distribute** research objects.

Community framework for **collaboration, peer production and sustainability.**





UNESCO regards science as a human right -- the greatest collective endeavour -- that has significant value as a common good.



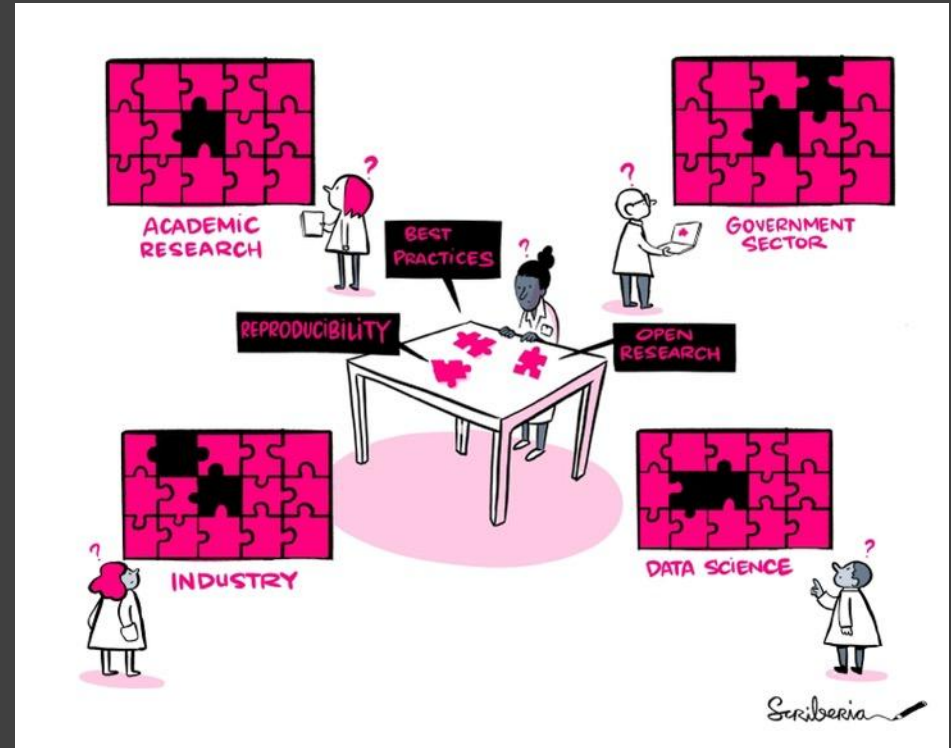
*UNESCO regards science as **a human right** -- the greatest **collective endeavour** -- that has significant **value as a common good**.*

... aims to **turn right to Open Science into duty** to be exercised by researchers, institutions, educators, publishers, employers, libraries, and policymakers, facilitated by Member States.

Integrating open science

Open Science means different things in different contexts, and hence, there is no fixed “best practice”.

Many barriers to openness.



Ten arguments against Open Science that you can win.

<https://www.software.ac.uk/blog/2020-12-17-ten-arguments-against-open-science-you-can-win>, @malvikasharan, @turingway, Image by Scriberia for The Turing Way , CC-BY 4.0, Zenodo: <https://zenodo.org/record/7716933>

The Turing Way

An Open Science and community lead guide on Data Science.

We involve and support a **diverse community** to make research **reproducible, ethical, and collaborative** for everyone.



The Alan Turing Institute

The national institute
for data science and
artificial intelligence



Challenges

Advance data science and artificial intelligence to...



Tools, Practices and Systems

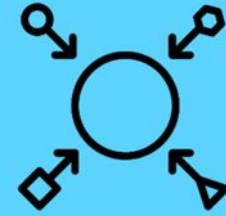
- Trustworthy systems
- Transparent reporting
- Inclusive interoperable design
- Ethical integrity
- Respectful co-creation
- Leadership in open research



Trust



Transparency



Inclusivity



Integrity



Respect



Leadership

The Turing Way: Book on Reproducibility



Kirstie Whitaker

Director: Tools,
Practices & Systems
Programme (TPS)

“We need to share the responsibility for open and reproducible science.

That along with good collaboration, communication and ethics should be seen as fundamental scientific methods.”

The Turing Way is a lightly opinionated guide to reproducible data science.

Our goal is to provide all the information that researchers need at the start of their projects to ensure that they are easy to reproduce at the end.

This also means making sure PhD students, postdocs, PIs, and funding teams know which parts of the "responsibility of reproducibility" they can affect, and what they should do to nudge data science to being more efficient, effective, and understandable.

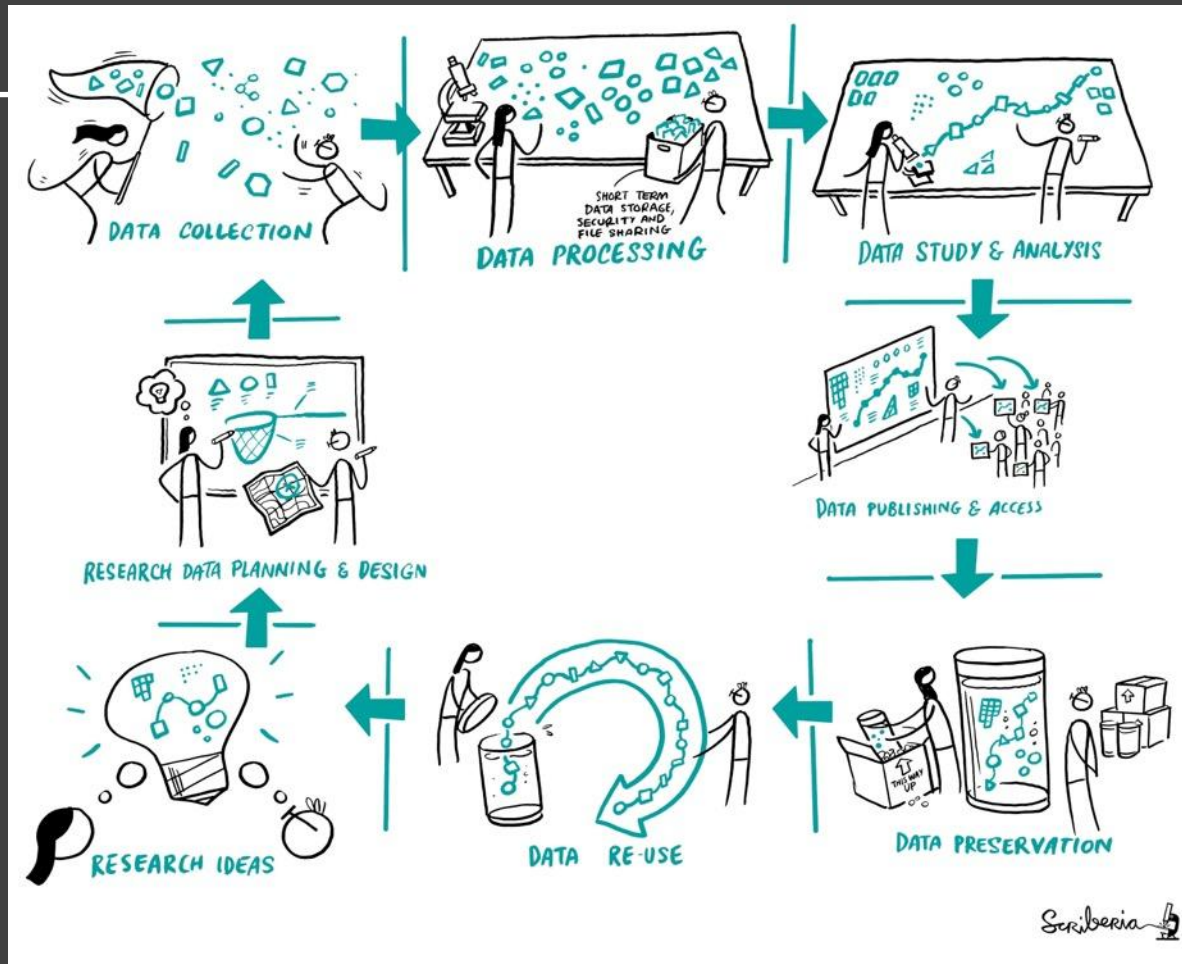


Reproducibility

		Data	
		Same	Different
Analysis	Same	Reproducible	Replicable
	Different	Robust	Generalisable

Reproducibility

		Data	
		Same	Different
Analysis	Same	Reproducible	Replicable
	Different	Robust	Generalisable



Guide for Reproducible Research

Overview

Open Research

Version Control

Licensing

Research Data Management

Reproducible Environments

BinderHub

Code quality

Code Testing

Code Reviewing Process

Reusable Code

Continuous Integration (CI)

Reproducible Research with

Make

Research Compendia



Fig. 3 The Turing Way project illustration by Scriberia. Used under a CC-BY 4.0 licence. DOI: [10.5281/zenodo.3332807](https://doi.org/10.5281/zenodo.3332807).

The Turing Way: Guides on Data Science



Kirstie Whitaker

Director: Tools,
Practices & Systems
Programme (TPS)



Malvika Sharan

TPS Senior
Researcher: Open
Research & Community



Anne Lee Steele

Community Manager,
The Turing Way



The Turing Way

all contributors 429

Welcome

- Guide for Reproducible Research ▾
- Guide for Project Design ▾
- Guide for Communication ▾
- Guide for Collaboration ▾
- Guide for Ethical Research ▾
- Community Handbook ▾
- Afterword ▾

The Turing Way Guides



Reproducibility



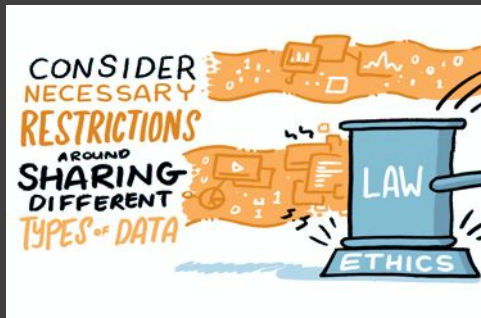
Project Design



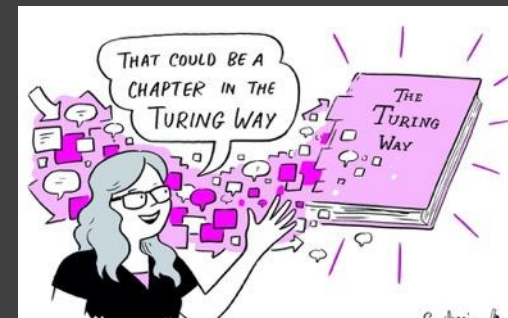
Communication



Collaboration



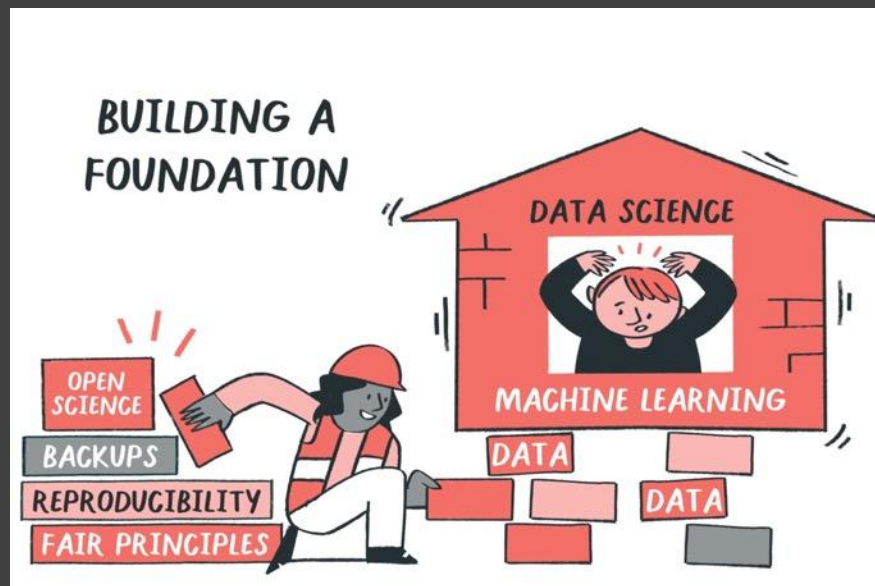
Ethical Research



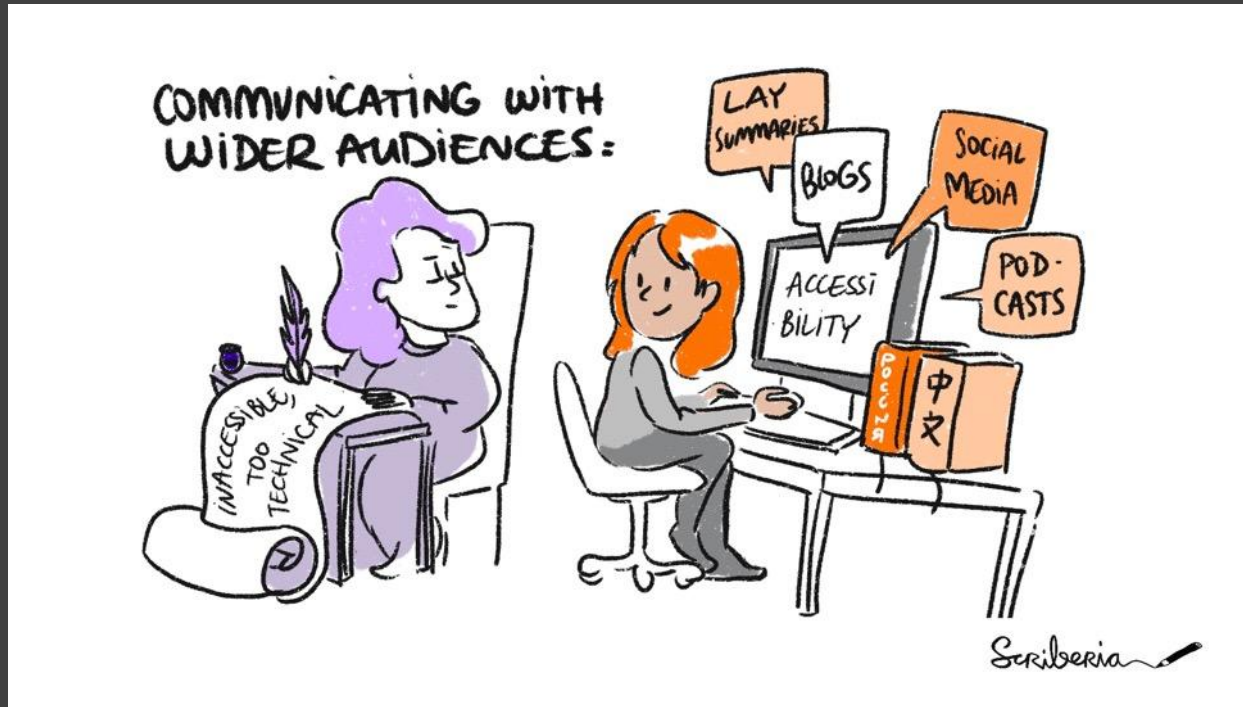
Community Handbook

Foundational skill-set

Purpose of openness is to ensure **scientific integrity and quality outcomes**, achieved by applying **reproducible, ethical, collaborative and inclusive** research practices.



Guide for Communication



Overview of Guide for Communication

Open Scholarship

Blogs for Research

Communication

Social Media for Research Communications

Making Research Objects Citable

Publishing Different Article Types

Communications in Open Source Projects

Authorship and Contributions on Academic Articles

Peer Review

Guide for Collaboration

Getting Started With GitHub

Maintainers and Reviewers
on GitHub

Managing a New
Community and Team

Leadership in Data Science

Research Infrastructure

Roles

Remote Collaboration

Shared Ownership in Open
Source Projects



Guide for Ethical Research

Introduction to Research Ethics

Research Ethics Committees Workflows

Ethical Decisions in Preclinical Research

Law, Policy and Human Rights in Ethics

Activism for Researchers

Internal Policy Advocacy

Self-Reflection



Guide for Project Design

Overview of Project Design

Planning for Project Design

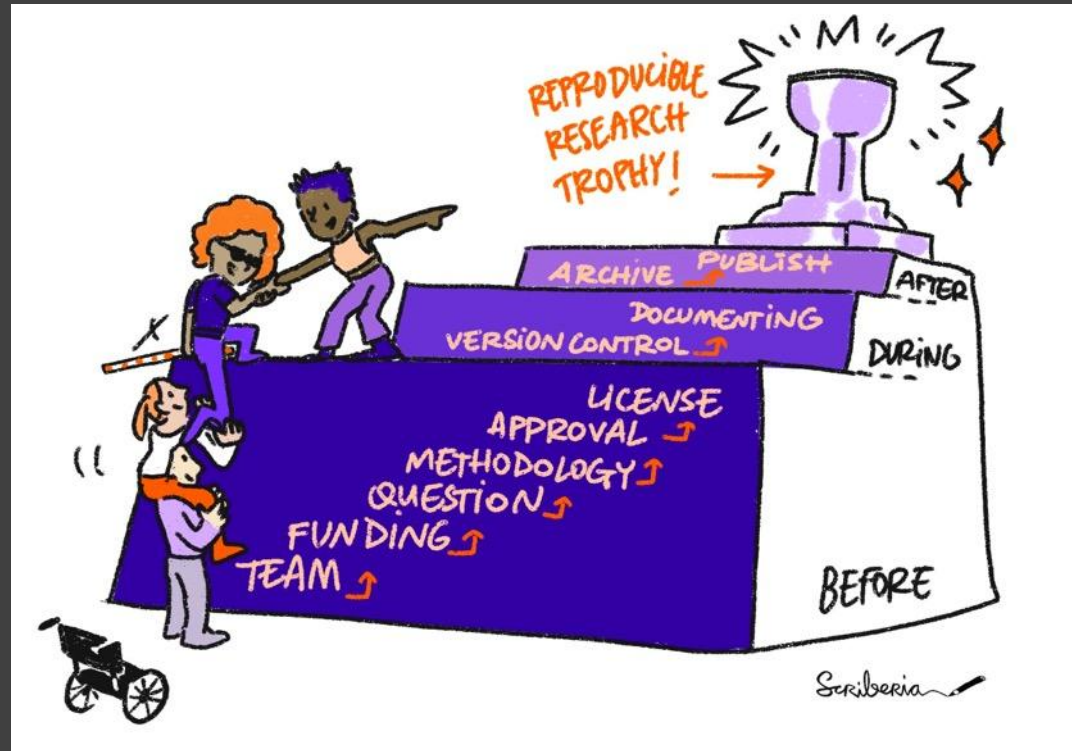
Communication and
Collaboration

Reproducibility Methods

Version Control and
Documentation

Sharing Your Research
Work

Creating Project Repositories





Book:
the-turing-way.netlify.app/

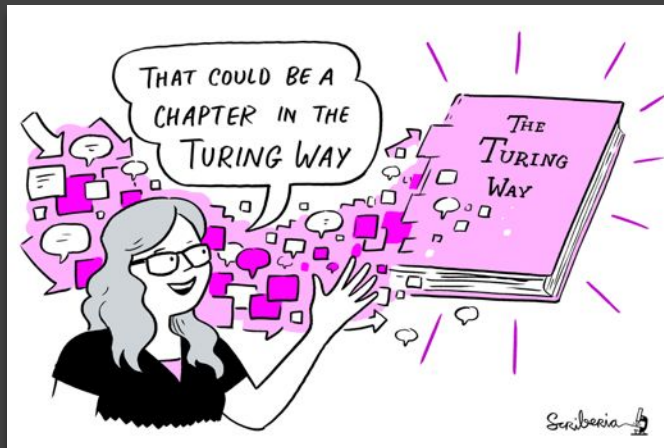
GitHub:
github.com/alan-turing-institute/the-turing-way

Twitter:
twitter.com/turingway

Email:
theturingway@gmail.com

CC-BY 4.0, *The Turing Way*

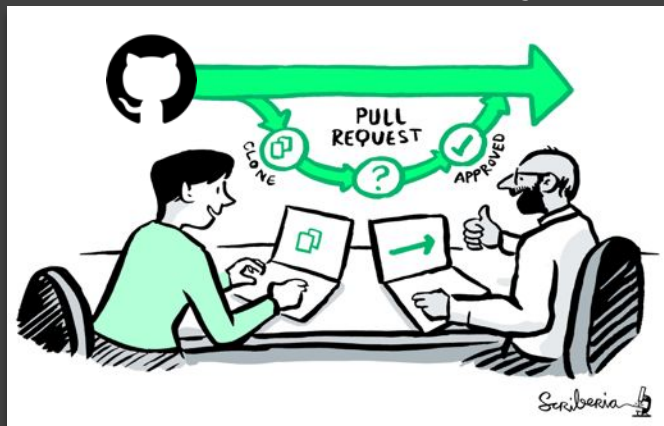
A Book



A Community



An Open Source Project



A Culture of Collaboration





Book:
the-turing-way.netlify.app/

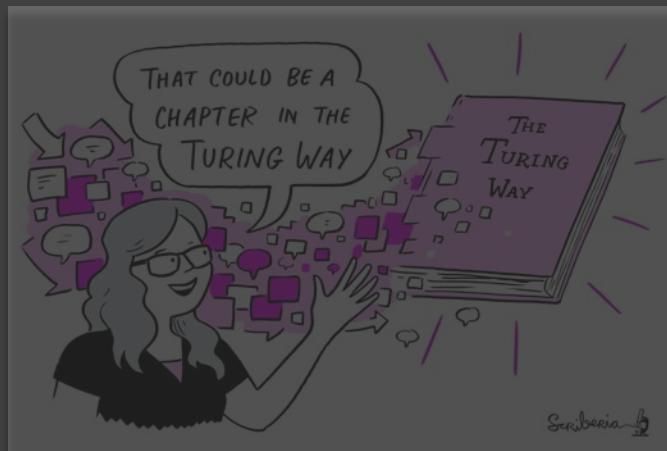
GitHub:
github.com/alan-turing-institute/the-turing-way

Twitter:
twitter.com/turingway

Email:
theturingway@gmail.com

CC-BY 4.0, *The Turing Way*

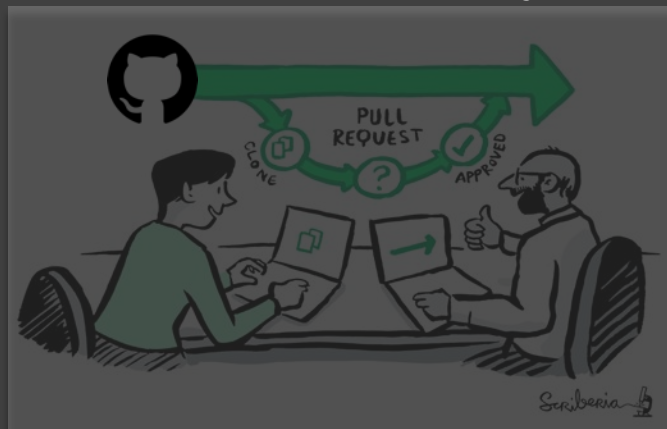
A Book



A Community

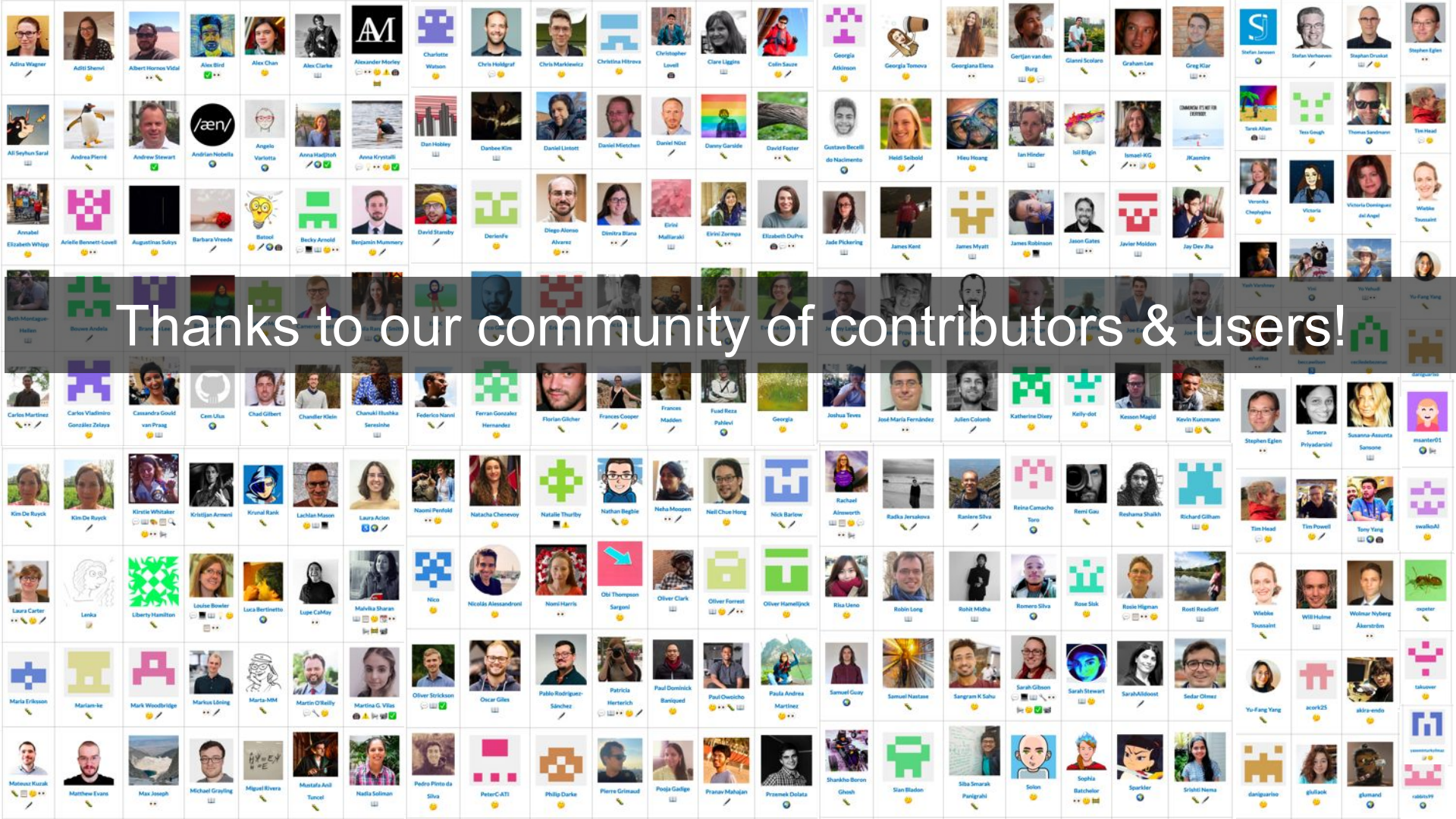


An Open Source Project



A Culture of Collaboration





Thanks to our community of contributors & users!

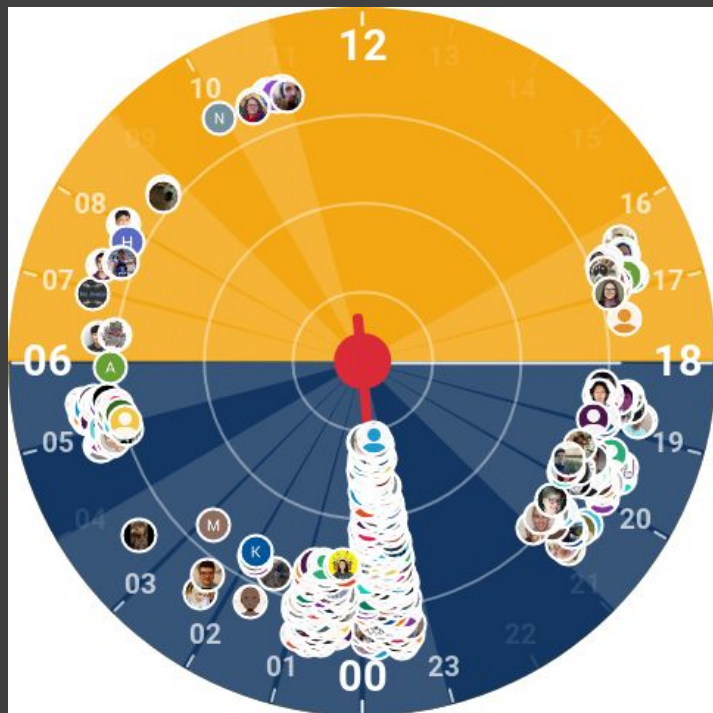
📁 .github	Remove prettier configuration
📁 book	minor update
📁 communications	Fix typos
📁 conferences	Add KW formatting pedantry
📁 project_management	Update online-collaboration-cafe.md
📁 templates	Updating Github templates
📁 tests	Add "et cetera" as a deprecated Latinism
📁 workshops	Remove mis-pasted text



📄 .all-contributorsrc	Merge pull request #991 from alan-turing-institute/all-contributors/a...	5 days ago
📄 .gitignore	ignore pptx in workshop folder	9 months ago
📄 .travis.yml	add html-proof file again	last month
📄 <u>CODE_OF_CONDUCT.md</u>	her -> their	6 months ago
📄 <u>CONTRIBUTING.md</u>	Update CONTRIBUTING.md	2 months ago
📄 GOVERNANCE.md	Read through months later	5 months ago
📄 LICENSE.md	Fix typo in licence	2 months ago
📄 <u>README.md</u>	Merge pull request #991 from alan-turing-institute/all-contributors/a...	5 days ago
📄 book_skeleton.md	Update book_skeleton.md	13 months ago
📄 <u>contributors.md</u>	Add myself to contributors.md	11 months ago
📄 tips_and_tricks_survey.md	Update tips_and_tricks_survey.md	14 months ago
📄 ways_of_working.md	Adjust team contact section	5 months ago

GitHub:
<https://github.com/alan-turing-institute/the-turing-way>

Global community: translation & contextualisation



all contributors 429

Camila Rangel-Smith (crangelsmith)	Senior Research Data Scientist, The Alan Turing Institute	The Turing Way Translation and Localisation Co-Lead
Batool Almarzouq (BatoolMM)	Postdoctoral Researcher, KAIMRC and Honorary Research Fellow, The University of Liverpool	The Turing Way Translation and Localisation Co-Lead
Alejandro Coca Castro (acocac)	Postdoctoral Research Associate, The Alan Turing Institute	The Turing Way Translation and Localisation Co-Lead
Andrea Sánchez-Tapia (AndreaSanchezTapia)	Independent researcher	The Turing Way Translation and Localisation Co-Lead

crowdin

Turing Way

Project home

- Arabic (ar)
- Chinese Simplified (zh-CN)
- Portuguese, Brazilian (pt-...)
- Spanish, Latin America (e...)

Recognition for all Contributors

Afterword

Glossary

Bibliography

Contributors Record

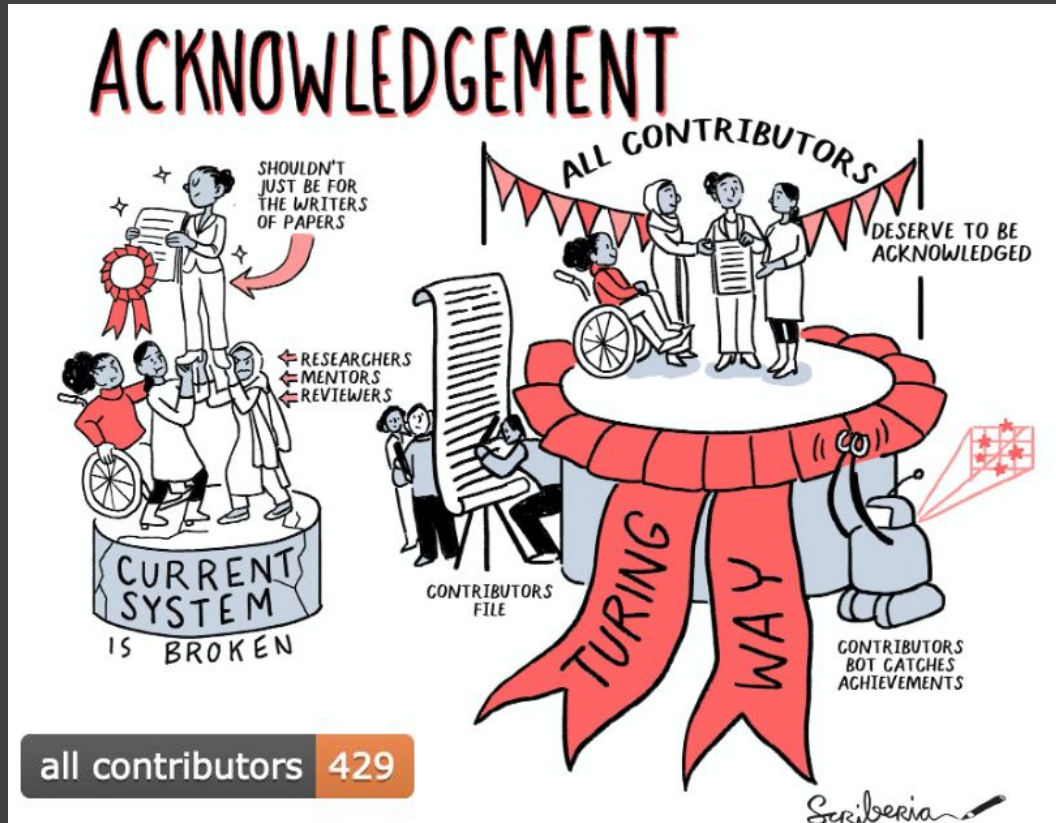


All Contributors

Recognize All Contributors

Including those that don't push code

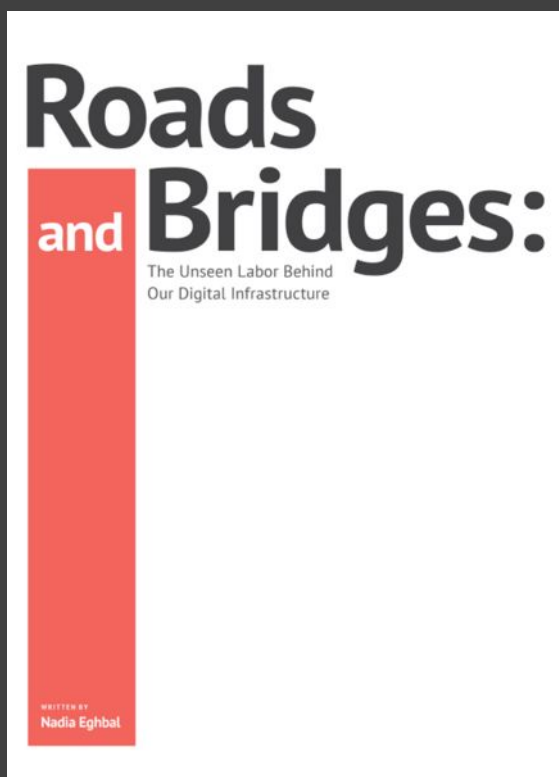
Cite as: *The Turing Way Community*. (2021). *The Turing Way: A handbook for reproducible, ethical and collaborative research* (1.0.1). Zenodo. <https://doi.org/10.5281/zenodo.5671094>



all contributors 429

A
B
C
E
H
I
J
K
L
M
N
P
R
S
T
V

Inclusion & recognition



Practices Panel

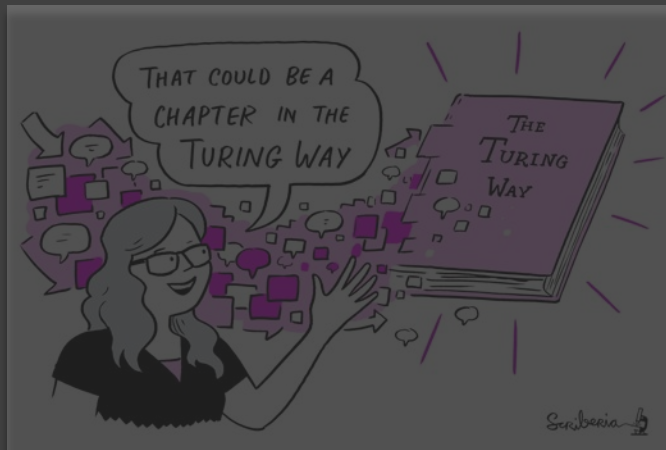
Highly commended:
The Turing Way, The Alan Turing Institute



Diverse Economy Iceberg - 2017, D'Ignazio, C., & Klein, L. (2020). 7. Show Your Work. PubPub.
<https://data-feminism.mitpress.mit.edu/pub/0vgzaln4/release/3>, Roads and Bridges: The Unseen Labor Behind Our Digital Infrastructure.
<https://hidden-ref.org/hidden-ref-award-ceremony/>,



A Book



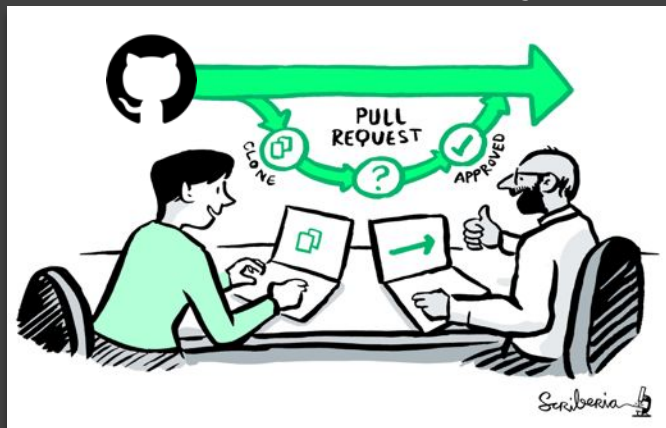
Book:
the-turing-way.netlify.app/

A Community



GitHub:
github.com/alan-turing-institute/the-turing-way

An Open Source Project



Twitter:
twitter.com/turingway

A Culture of Collaboration



Email:
theturingway@gmail.com

An open source project

- Everyone can freely read, reuse, distribute, modify and help develop.
- The project belongs to *The Turing Way* community.
- Built on open source infrastructure:
 - Git, Jupyter Book, Binder, project bots etc.
 - Nelfy: the-turing-way.[netlify](https://zenodo.org/communities/the-turing-way).app/welcome

zenodo Search Upload Communities Log in Register

The Turing Way

Recent uploads

Search The Turing Way

September 5, 2020 [0] Presentation Open Access View

Challenges in Assessing Contributions to Reproducible Research and Open Science

Sharan, Malvika

DORA Panel: Addressing Roadblocks in Research Assessment Reform Panel organizer and moderator: Helen Sitar Speakers: Malvika Sharan (presentation in this Zenodo deposit) with Elena Simukovic, David Carr, Ulrich Dirnagl, Anne Lehto, Serhi Nazarovets About the panel: Research evaluat

Uploaded on September 5, 2020

1 more version(s) exist for this record

August 11, 2020 [0] Presentation Open Access View

FSC2020 Lightning Talk: The Turing Way

Esther Pompl @ Kirstie Whitaker

Lightning talk presented by Esther Pompl on the 3rd of August 2020 for the Force11 Scholarly Communication Institute (FSC2020). Reproducible research is necessary to ensure that scientific work can be trusted. By sharing data, analysis code and the computational environment used to generate the r

Uploaded on August 11, 2020

August 6, 2020 [1] Journal article Open Access View

The Turing Way workshop on Boost your reproducibility with Binder

Sharan, Malvika

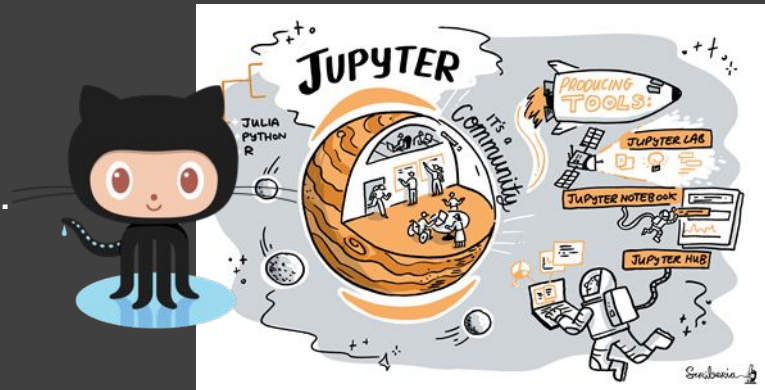
This workshop was organized with the UKDR team. Title: The Turing Way workshop on Boost your reproducibility with Binder Date: 11 June, 2020 13:00 - 17:00 (GMT) Instructors: Kirstie Whitaker, Sarah Gibson, Malvika Sharan Shared notes: <https://pkedml.io/malvikasharan/Binder-June2020-Agenda>

Uploaded on August 6, 2020

Curated by: The Turing Way

Curation policy: Not specified

Created: March 19, 2019



Project Growth & Recognitions

- **4+ years, >260 Chapters**, community resources
- **425+ contributors, 3500+ monthly users** - supported by 20+ core members (governance)
- **Replication/extension** by 3 Turing & 6+ external projects (e.g. ONS, UCL, Uni Oxford, LIBER: Association of European Research Libraries)



Qualitative/notable impacts

Resources are being used by **learners, educators, community builders, policy makers and researchers** globally

- **NASA - Transform to Open Science** - 5 years Mission for capacity building
- Recommended in **Goldacre Review for modern open working** into health data
- NASA OpenCore, CodeRefinery, Library Carpentries training materials
- Reproducibility of scientific results in the EU 2020 report
- An Emerging Technology Charter by **Mayor of London (2021 policy)**
- Innovation Scholars: **UKRI grant 2020** (funding call)
- Cited by 40+ peer-reviewed articles & 100+ online publications



Book:
the-turing-way.netlify.app/

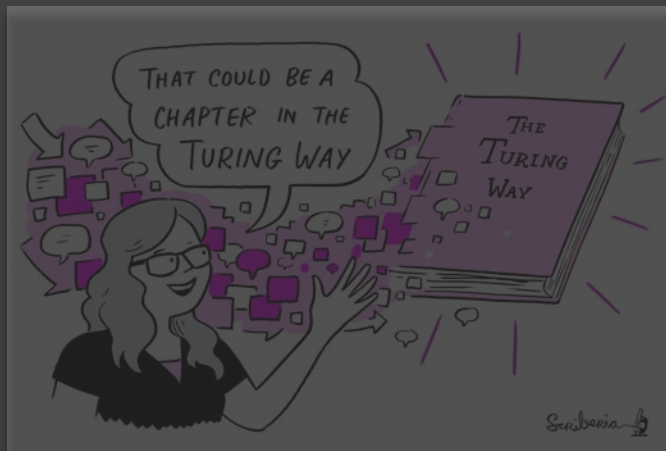
GitHub:
github.com/alan-turing-institute/the-turing-way

Twitter:
twitter.com/turingway

Email:
theturingway@gmail.com

CC-BY 4.0, *The Turing Way*

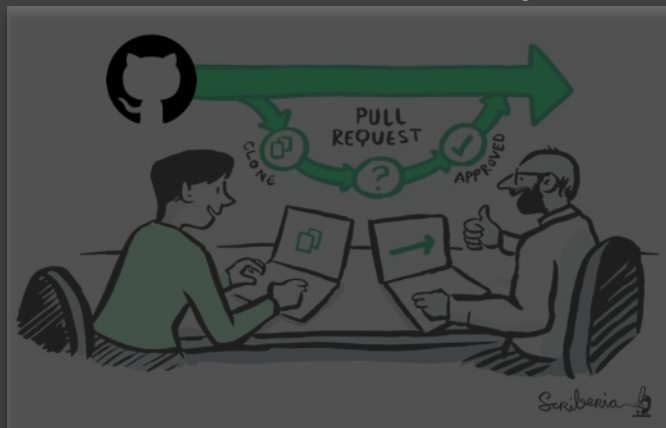
A Book



A Community



An Open Source Project

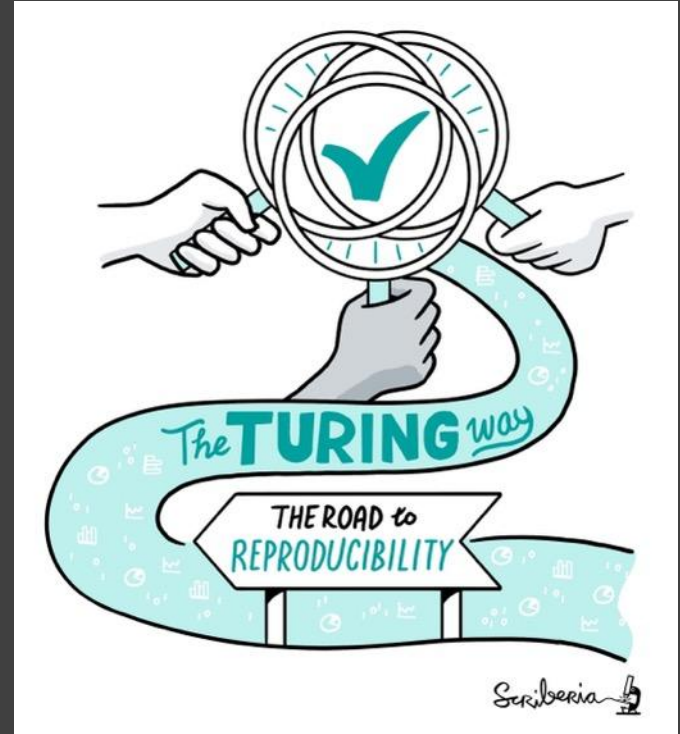


A Culture of Collaboration



A note on the name

- This is **not** a Turing project (although it has great support from the Institute)
- We are creating guidance together, **the way** is a journey not a set of rules



Community Building

Open is by default not:

- Inclusive
- Accessible
- Community-led

Intentional designing



Pathways for collaboration



Diverse Perspectives



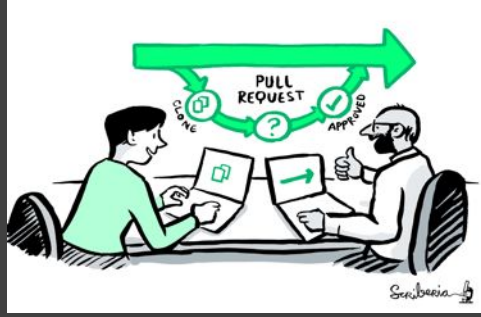
Combined Efforts



Engagements



Equitable Participation



Open Recognition



Co-Creation

Research Infrastructure Roles ^

Community Managers

Overview

Data Stewards Overview

Data Steward Personal Story

Data Wrangler Overview

Research Software Engineers
Overview

Research Software
Engineering Personal Story

Research Application
Manager Overview

Research Infrastructure
Developer Overview

Remote Collaboration v

Shared Ownership in Open
Source Projects v

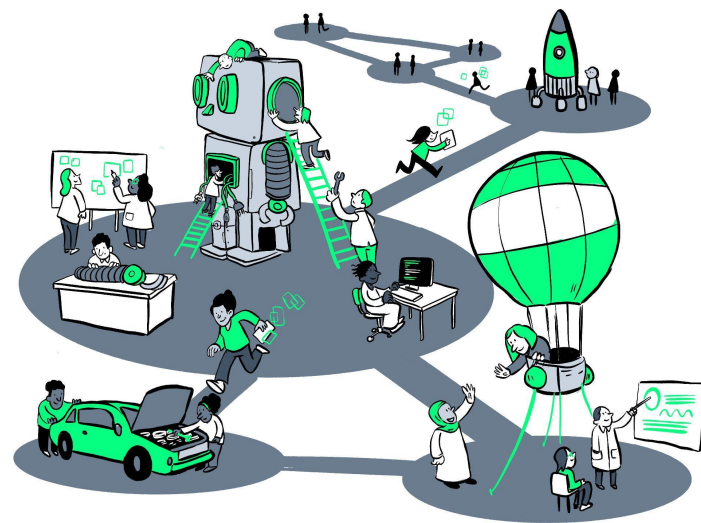
Guide for Ethical Research v

Community Handbook v

Examples of Research Infrastructure Roles

This initial list of examples of Research Infrastructure Roles that has been expanded as part of *The Turing Way* Hackathon Workshop at the [Big Team Science conference 2022](#).

- Community manager
- Project manager
- Research software engineer
- Research application manager
- Programme manager
- Data steward
- Data wrangler
- Research infrastructure developer
- Partnerships development manager
- Grant application manager
- Community engagement lead
- Librarian
- Communications manager
- Events manager
- Participatory research manager



@malvikasharan, @turingway, <https://the-turing-way.netlify.app/collaboration/research-infrastructure-roles.html>,

CC-BY image by *The Turing Way* and Scriberia, Zenodo: <https://doi.org/10.5281/zenodo.3332807>. Presentation DOI: 10.5281/zenodo.7716933

Opportunities for connections



Co-working Calls & Collaboration Cafés



Biannual Book Dash Events

Book Dash Applications are open!

22 - 26 May 2023

London, UK

(and worldwide!)

Apply to

- Participate in a week-long event with *The Turing Way* community
- Meet other community members from around the world
- Join an ongoing project or team
- Host a local hub within your university, city or region



Scriberia

Have any questions about the application process?

- Email *The Turing Way* team: theturingway@gmail.com
- Contact the Community Manager: Anne Lee Steele, asteele@turing.ac.uk

Reflect, Unlearn, Reframe: Community Care in times of digital burnout

31 March, 14:00 - 15:30 UTC – *Register on Eventbrite*



Agnes Kiragga
Technical Lead
African Population Health
Research Council



Chris Hartgerink
CEO & Founder
Liberate Science



Mayya Sundukova
Resident Fellow
Open Life Science



Patricia Herterich
Resident Fellow
Open Life Science



Eirini Zormpa
Community Manager
AIM-RSF & The Turing Way



The Turing Way Community Handbook

Community Handbook

Code of Conduct

Ways to Enter the Project

Style Guide

Maintaining Consistency

Chapter Templates and
Contribution Workflow

Acknowledging Contributors

Monthly Newsletters

Book Dash Events

Community Coworking Calls

Template Collection



Environmental Data Science book or EDS



Environmental Data
Science Book

🔍 Search this book...

Welcome

PREAMBLE

About EDS book

Audience

Usage

Citation and reuse

Contribute

GALLERY

Exploration

Preprocessing

Modelling

Welcome

Environmental Data Science book or EDS book is a **living, open and community-driven** online resource to showcase and support the publication of data, research and open-source tools for collaborative, reproducible and transparent Environmental Data Science.



Fig. 1 Illustration by Scriberia as part of *The Turing Way* book dash in November 2021. Zenodo.
<http://doi.org/10.5281/zenodo.5706310>



Alejandro Coca



Anne Fouilloux

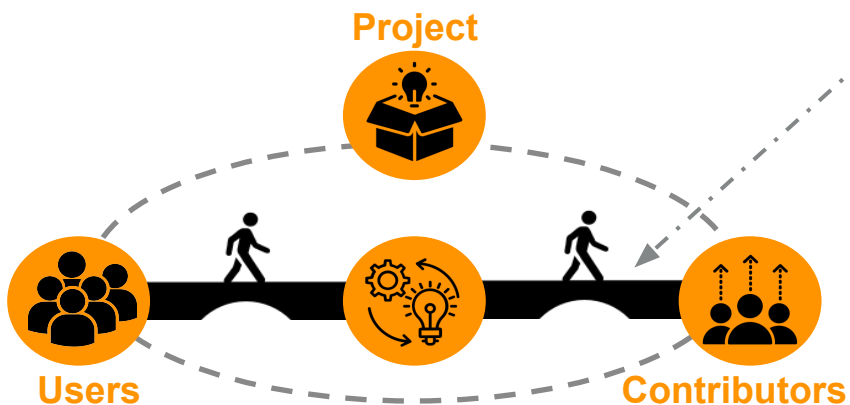
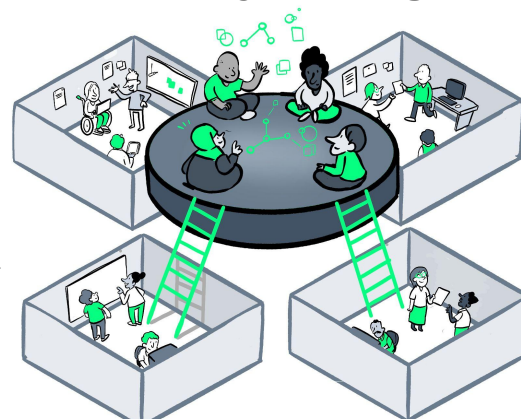
Jamila Mifdal, and Raquel Carmo. "Detecting floating objects using deep learning and Sentinel-2 imagery (Jupyter Notebook) published in the Environmental Data Science book." ROHub. Jan, 2022.

<https://w3id.org/ro-id/b34facfa-cea8-48f5-89f6-f11ce00812a9>.

Tools, practices and systems

Building open source infrastructure to empower a global, decentralised network of people who connect data with domain experts

Community Management



Strategic and technical support for Stakeholder Engagement and Participation

Researchers and collaborators



Dr Emma Karoune



Dr Arron Lacey



Anne Lee Steele



Vicky Hellon



Dr Eirini Zormpa



Claudia Fischer



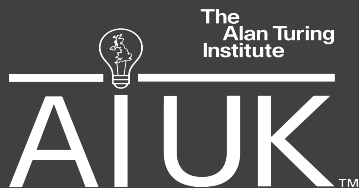
Ayesha Magill



Bridget Nea

Broader Recognition for Research Infrastructure Roles

- **The Turing Way Practitioners Hub** in close collaboration with orgs (government, industry, public sector)
- **The Turing's Skill Policy Award** for engaging with policy ecosystem - led by **Dr. Emma Karoune**



21-22 March
QEII, London

The
Alan Turing
Institute

CATAPULT
Digital



Join my team! - Senior Research Associate

Conduct community-based research with Practitioners Hub stakeholders leading to high-quality interdisciplinary cross-sector collaboration, and their communications openly.

Deadline: 12 March

Salary: **£51,025-£52,500** + benefits, Visa sponsorship is possible.



The Turing Way Events

- *Collaboration Cafes*
 - 1st & 3rd Wednesdays (14:00 UTC)
- *Coworking Calls*
 - Mondays (10:00 UTC)
- *Slack + more ways to connect!*

bit.ly/turingway



Reproducibility

- Is my "work" **correct**?
- Can others **read/test** it?
- Is my **workflow robust**?
- Have I provided **manual**?
- Is my work **citable**?

Open Science

- Is my "work" **freely available**?
- Can others **modify/share**?
- Is my **workflow reusable**?
- Have I given **permission**?
- Is my work **open for collab**?

Reproducibility

- Is my "work" **correct**?
- Can others **read/test** it?
- Is my **workflow robust**?
- Have I provided **manual**?
- Is my work **citable**?

Reproducibility should ensure higher scientific standards allowing others to read, test and reuse your work.

Open Science

- Is my "work" **freely available**?
- Can others **modify/share**?
- Is my **workflow reusable**?
- Have I given **permission**?
- Is my work **open for collab**?

Open Science should additionally allow reporting errors, fixing issues, build on, collaborate and sustain your work.

Take possible steps towards openness

“Openness is not a binary condition, but highly situational, contingent and dependent on the privilege and context of knowledge makers and gatekeepers.”



**Knowledge
Equity Lab**



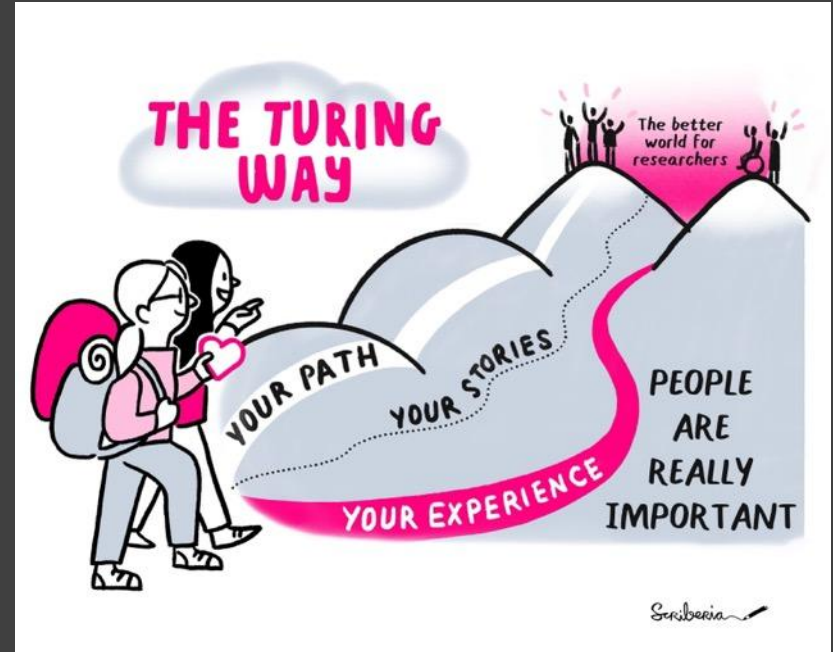
Leslie Chan

Associate Professor, Dept.
of Arts, Culture and Media
& the Centre for Critical
Development Studies,
University of Toronto
Scarborough

Meeting you where you are!

- i. Join the community
- ii. Learn a new skill
- iii. Share your skills
- iv. Collaborate with others
- v. Mentor others' contributions
- vi. Represent this community

We value your participation!



What does open mean to You?

- Learning from the ‘**Commons**’
- Purpose is to ensure scientific integrity and quality outcomes:
The Turing Way
- Hidden labour, collaborative process, **community practices**
- Building open science skills with a **global community**



Reimagining Openness

Open Science is not a radical approach, but a **tool to learn, unlearn, challenge, dismantle and reimagine research infrastructure** that prioritises equitable participation, co-creation and culture change.



Acknowledgements & Links

The
Alan Turing
Institute

The Turing Way Community

- Kirstie Whitaker, Anne Lee Steele, Alexandra Araujo Alvarez + many Turing Way Core Team and Turing's TPS team members
- **Book:** the-turing-way.netlify.com, **Twitter:** twitter.com/turingway
- **GitHub:** github.com/alan-turing-institute/the-turing-way
- **Useful links & opportunities are listed here:** <https://bit.ly/turingway>



Cite the original talk as: Sharan, Malvika. (2022, May 27). Open science for enabling reproducible, ethical and collaborative research: Insights from The Turing Way. Zenodo. <https://doi.org/10.5281/zenodo.6589624>

Images used in this talk have been co-developed by Scriberia and The Turing Way community, shared under CC-BY 4.0. <https://zenodo.org/record/7587336>



National Aeronautics and
Space Administration



Dr. Chelle Gentemann, Science Lead
Yvonne Ivey, Equity Lead
Cyndi Hall, Community Coordinator
Isabella Martinez, Content Coordinator
Dr. Yaitza Luna-Cruz, CSDO Program Scientist
Dr. Paige Martin, TOPS Program Scientist
Dr. Sam Gabre, ARS, Science Advisor
Dr. Ryan McGranaghan, GSFC, Science Advisor

Kevin Murphy, Chief Science Data Officer SMD
Katie Baynes, Deputy Chief Science Data Officer SMD
Dr. Steve Crawford, Science Data Officer SMD
Amy (Uyen) Truong, Chief Science Data Office Coordinator



YEAR OF OPEN SCIENCE

◆ NASA ◆ NSF ◆ NOAA ◆
◆ DOE ◆ GSA ◆ NEH ◆ NIH ◆
◆ NIST ◆ USDA ◆ USGS ◆



<https://doi.org/10.5281/zenodo.7554804>