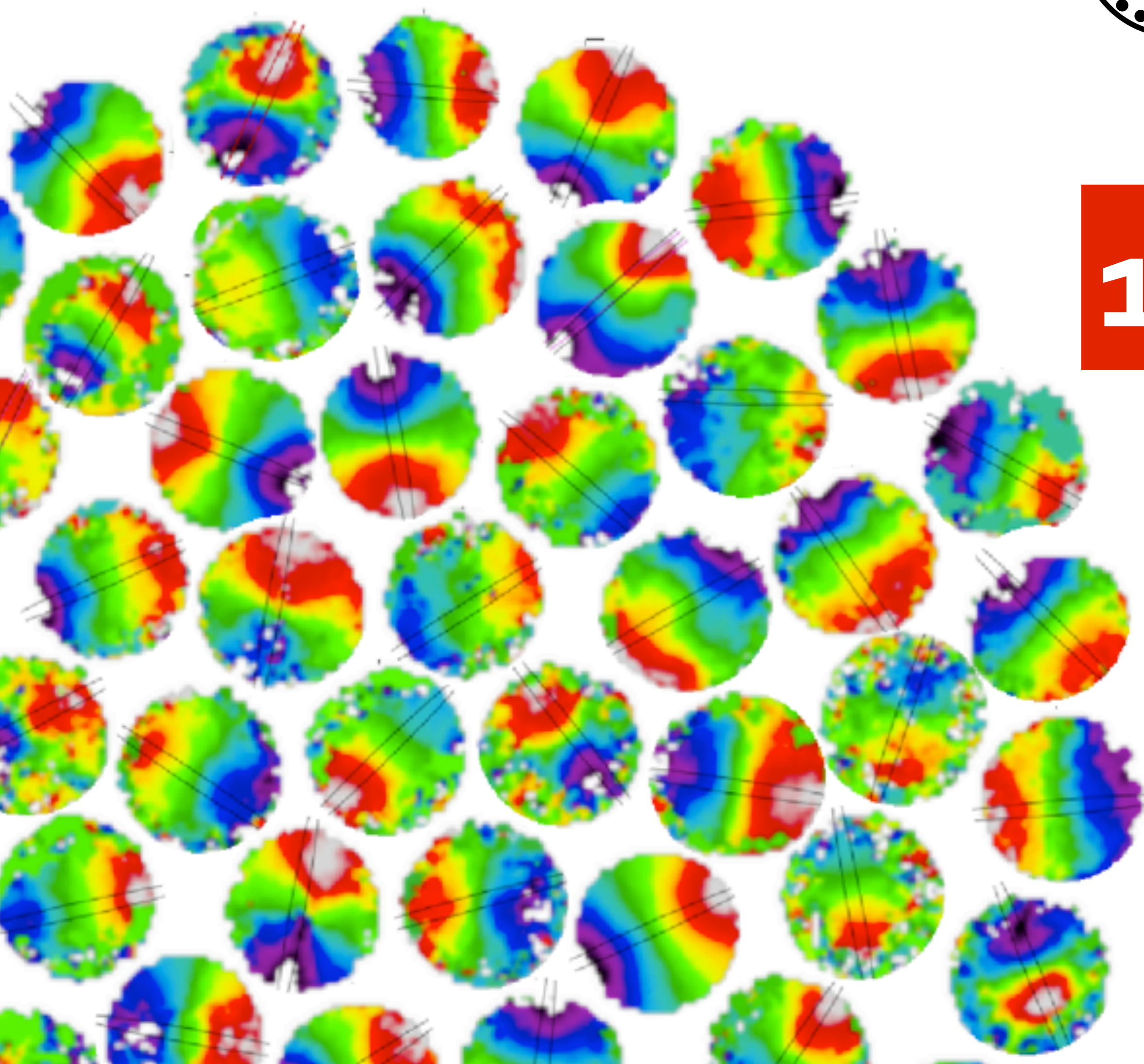


sami galaxy survey

1 year, 0.5M spectra

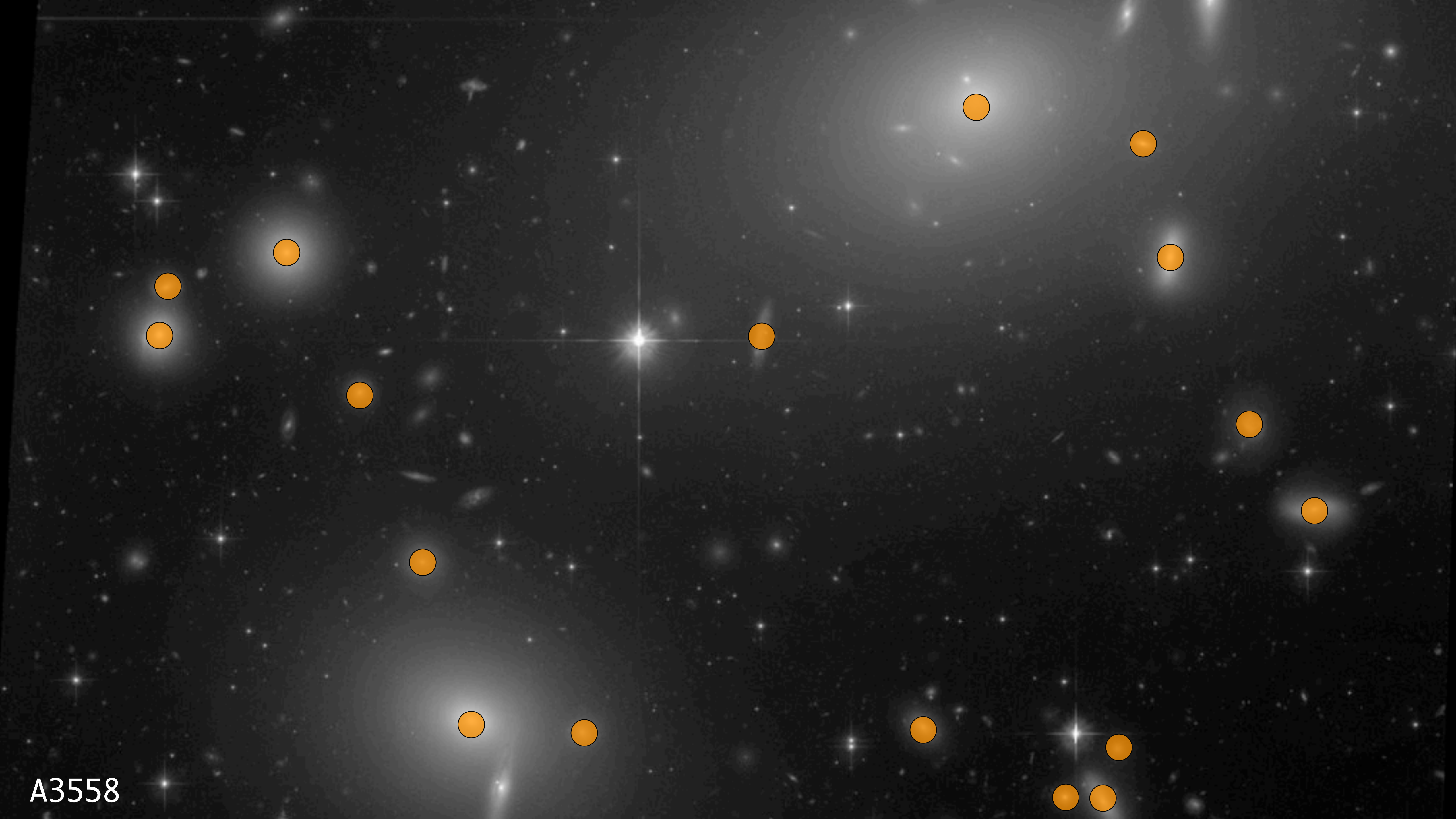


Iraklis Konstantopoulos
John Stocker Research Fellow, AAO

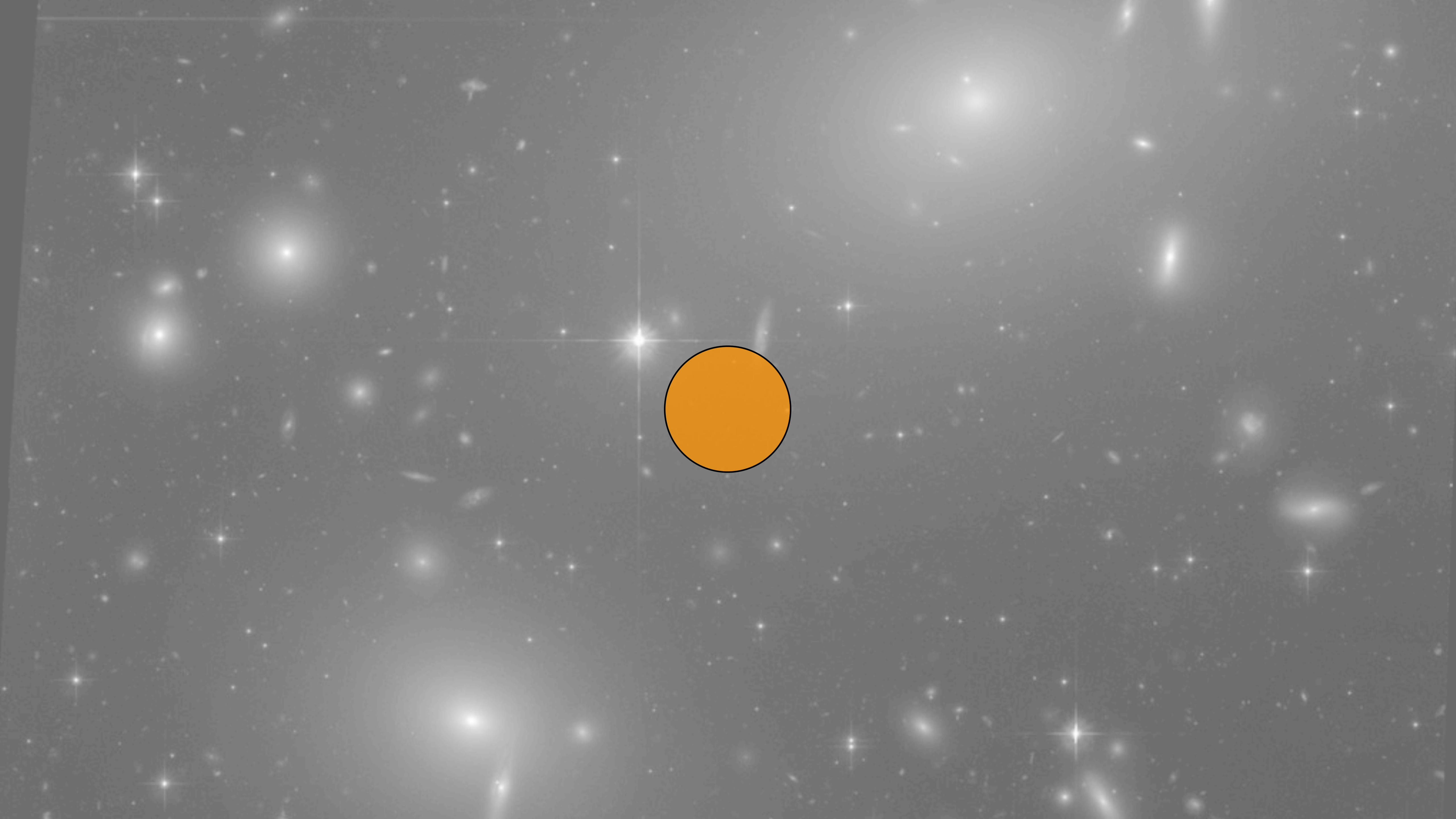
AAS 223, DC, 2014.01.07

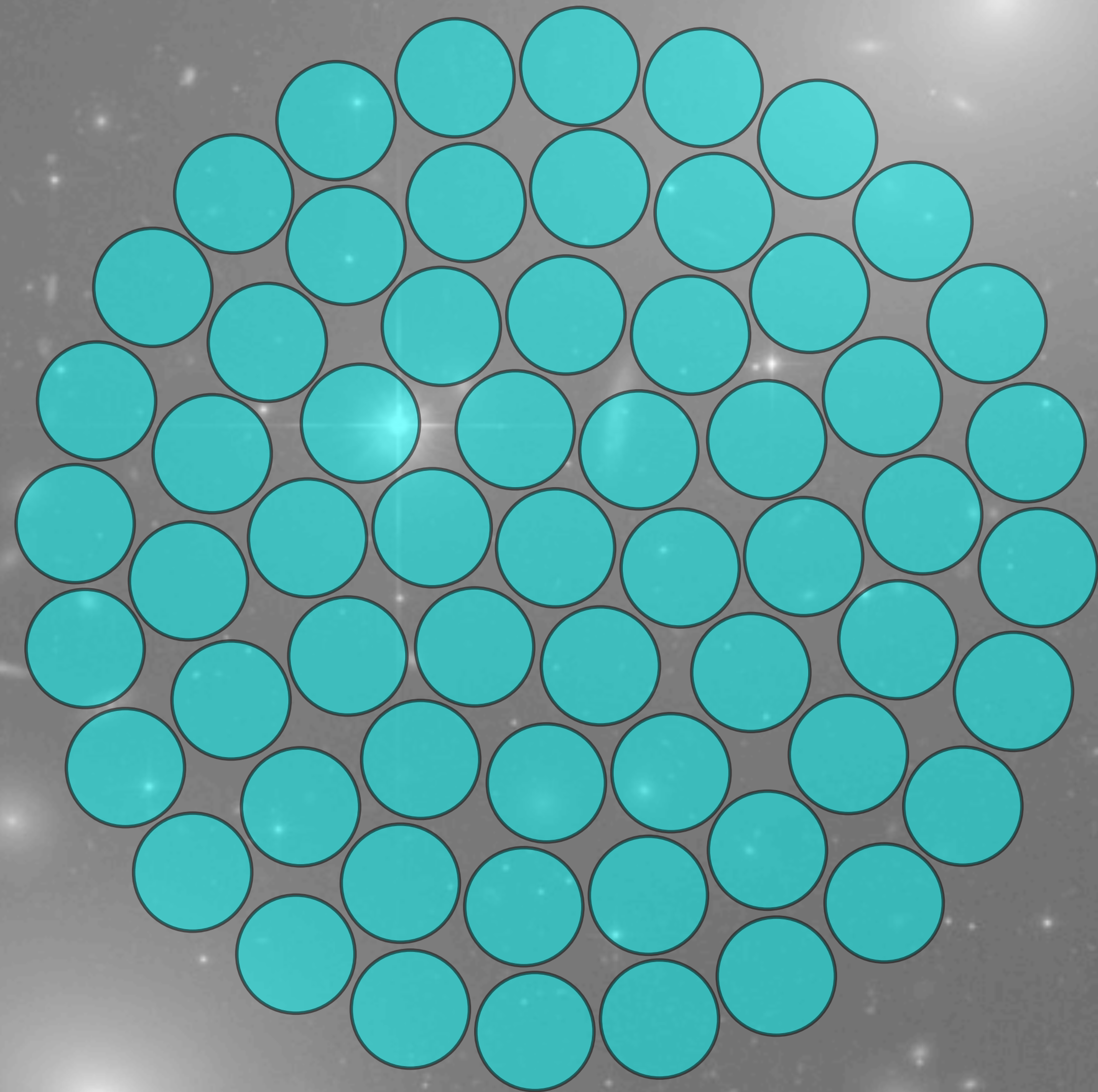


A3558

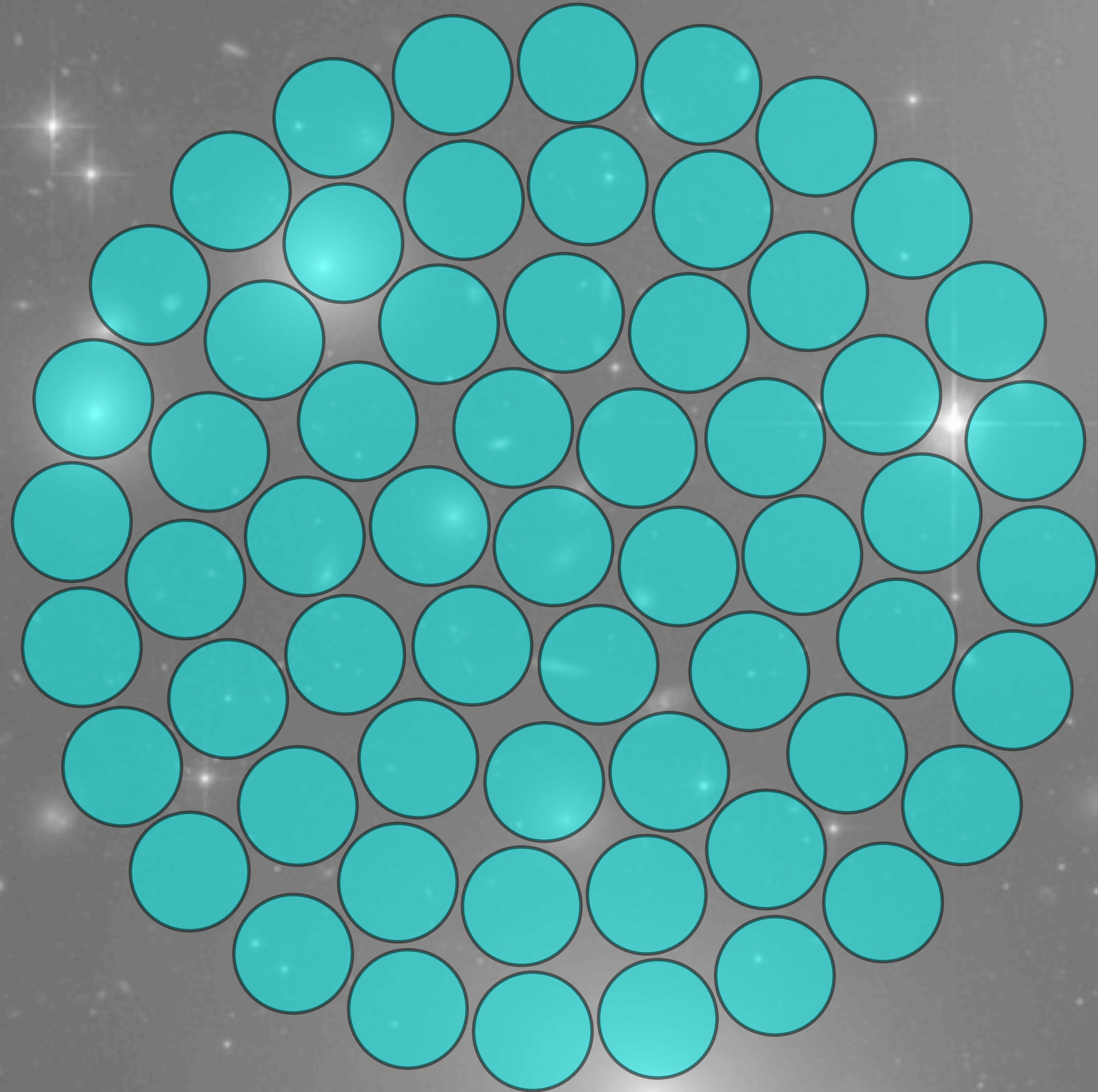


A3558

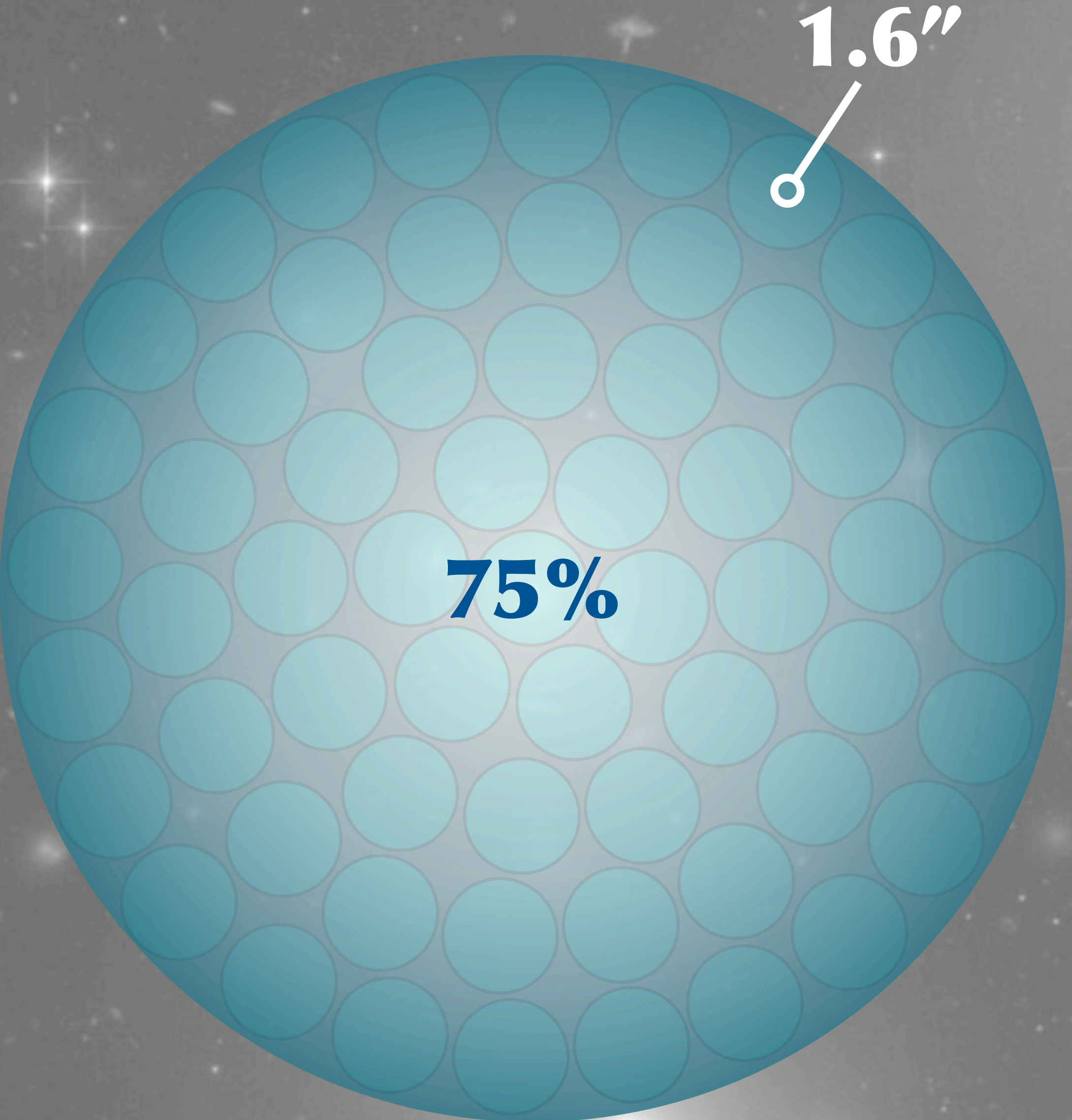




SAMI 'hexabundle'
= 61 fibres

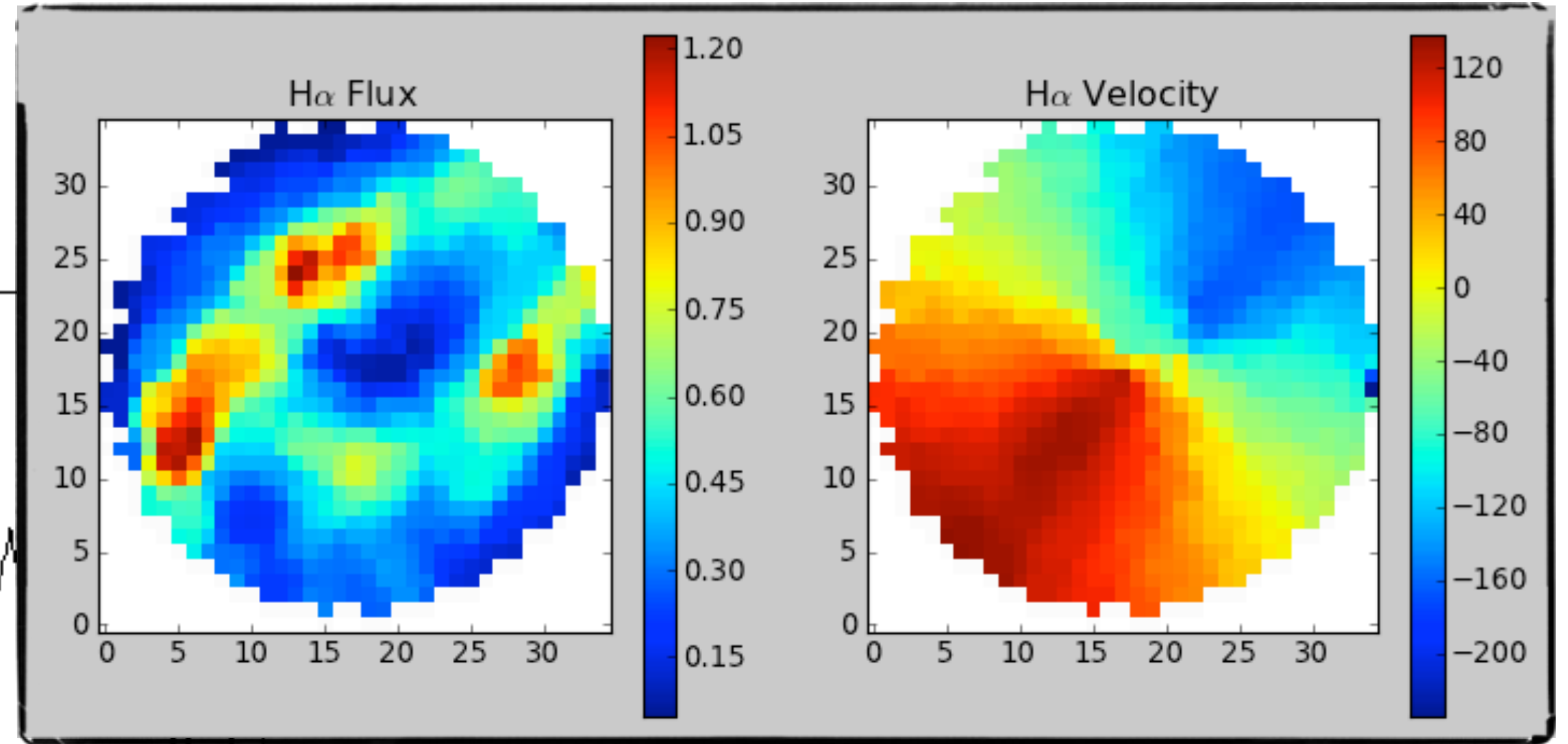
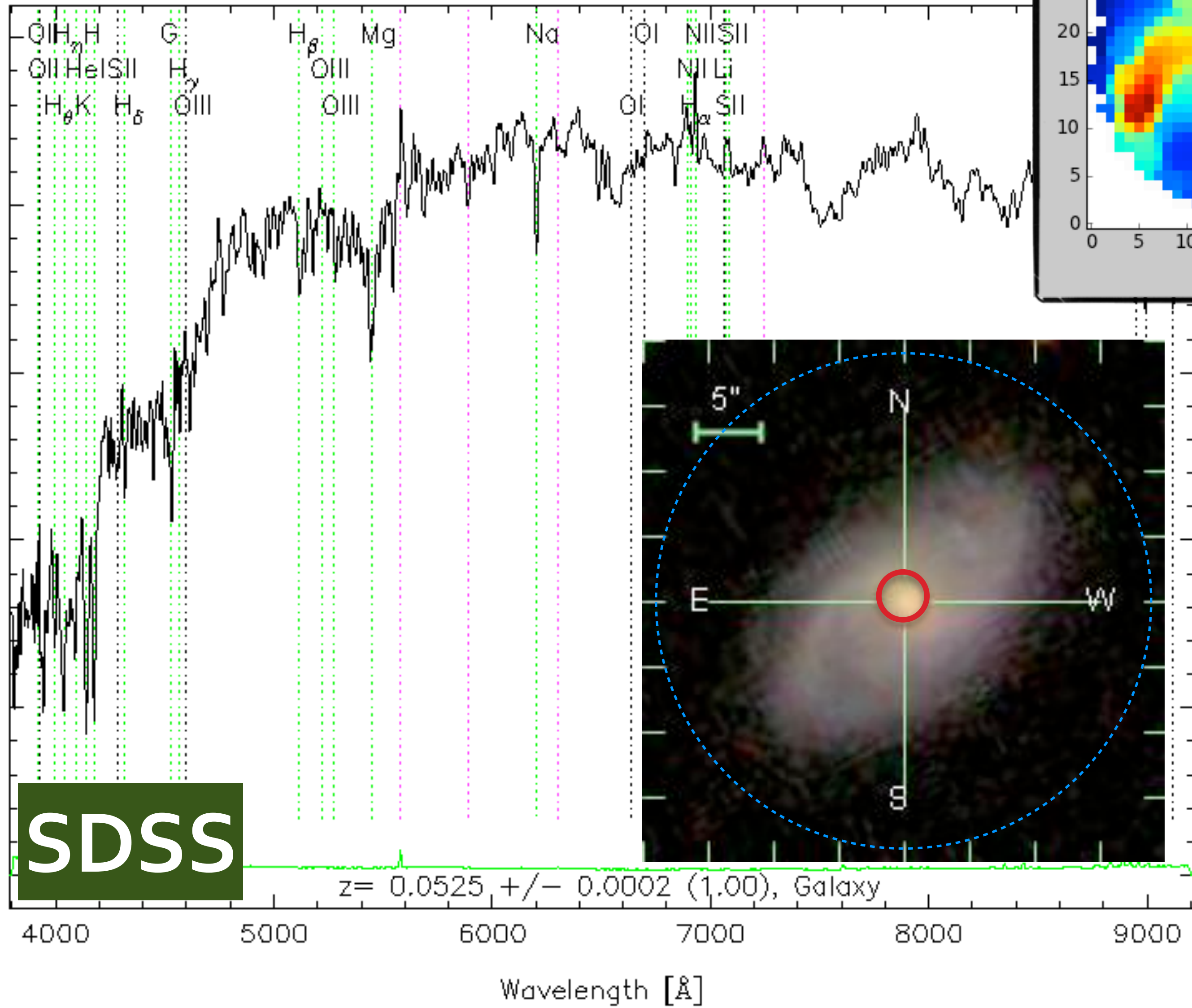


SAMI 'hexabundle'
= 61 fibres



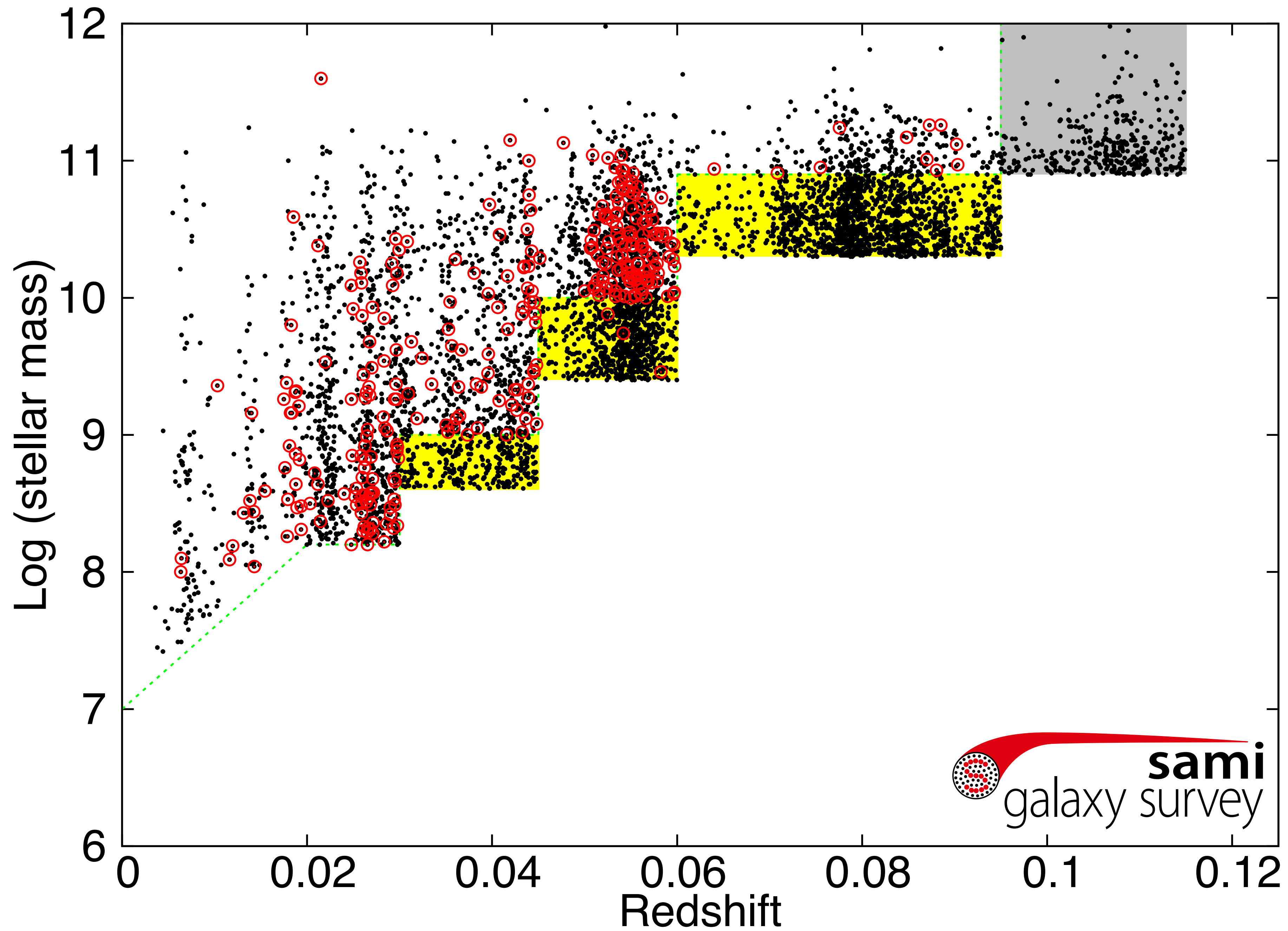
15"

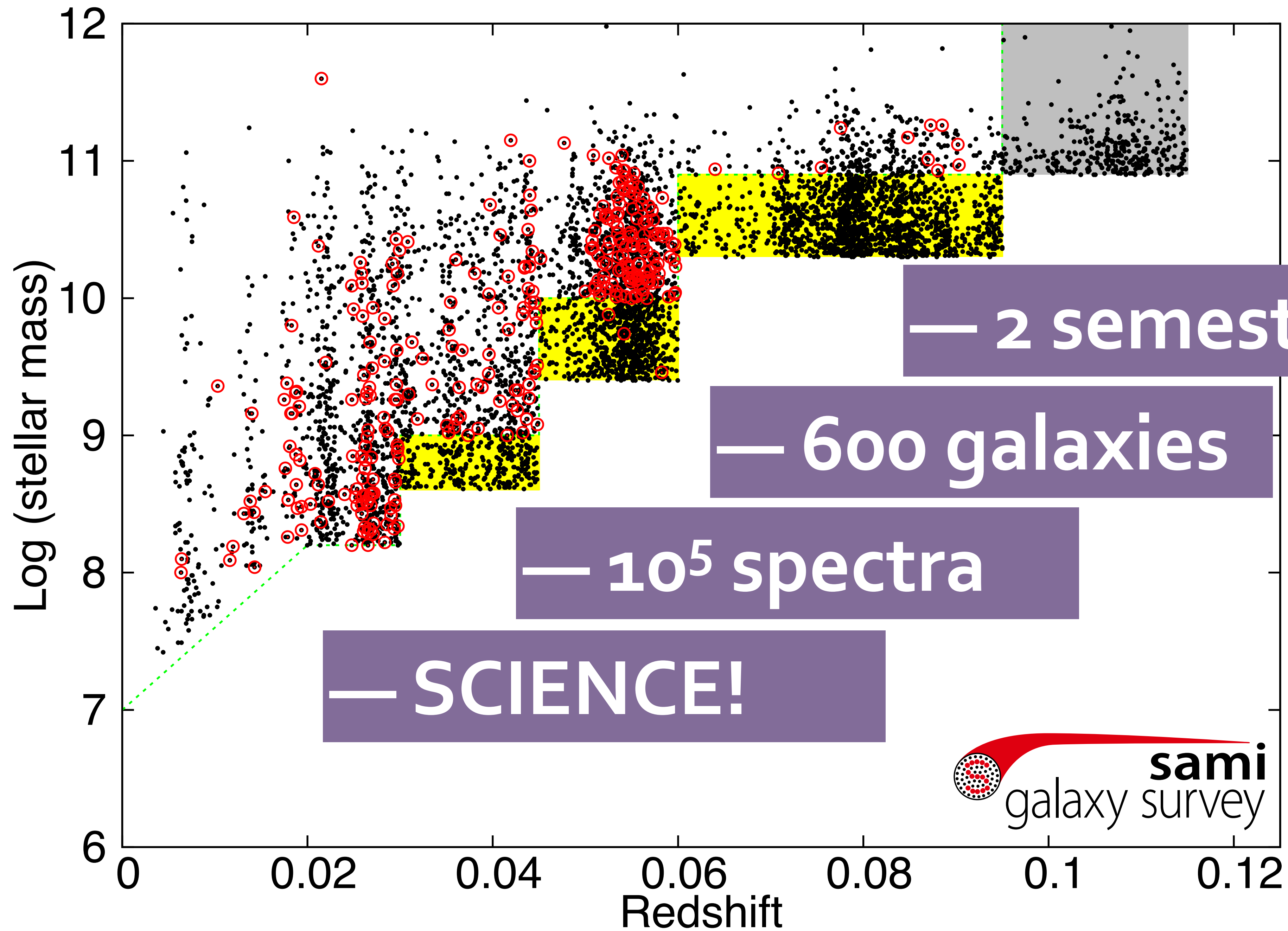
x13

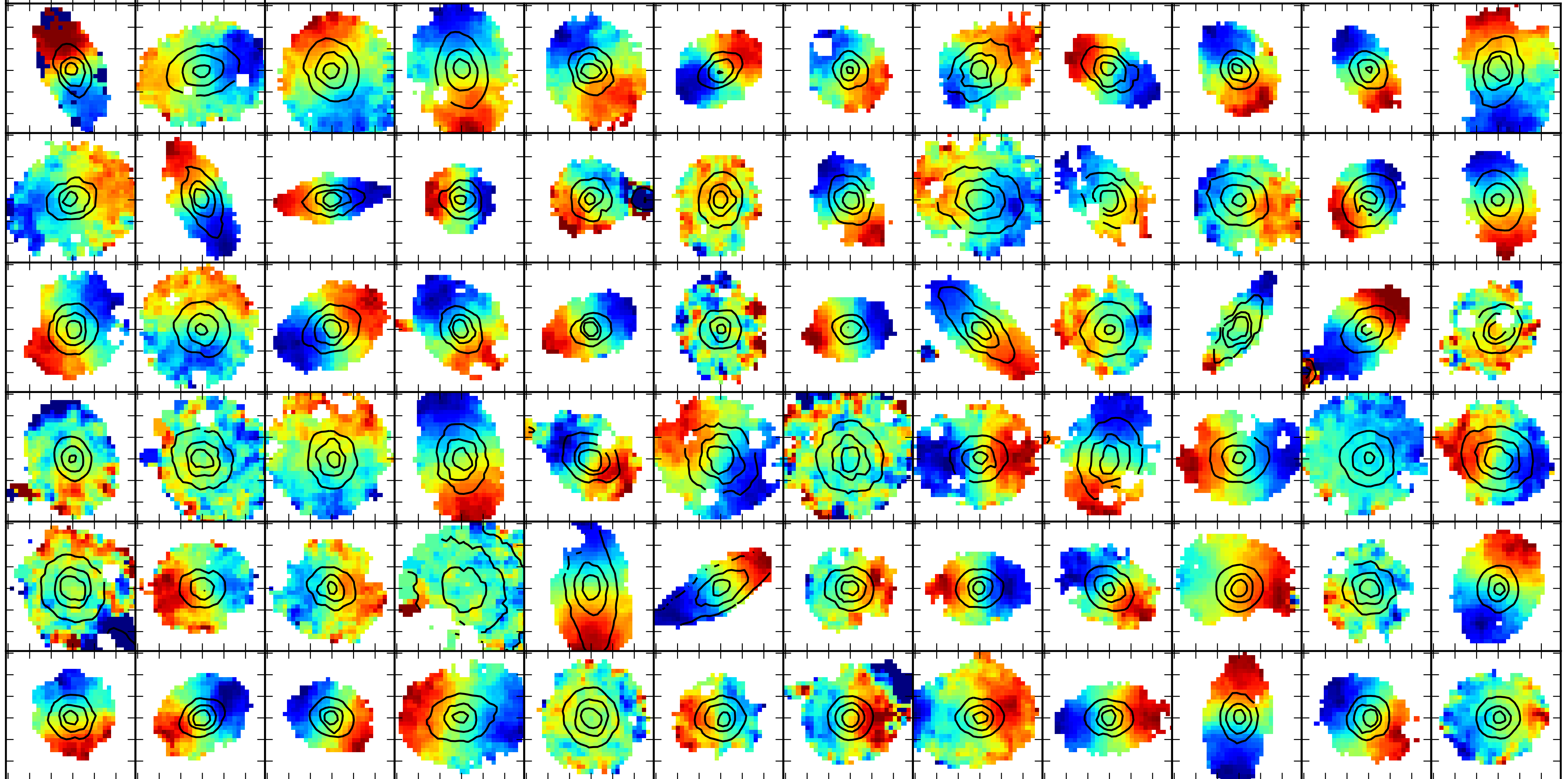


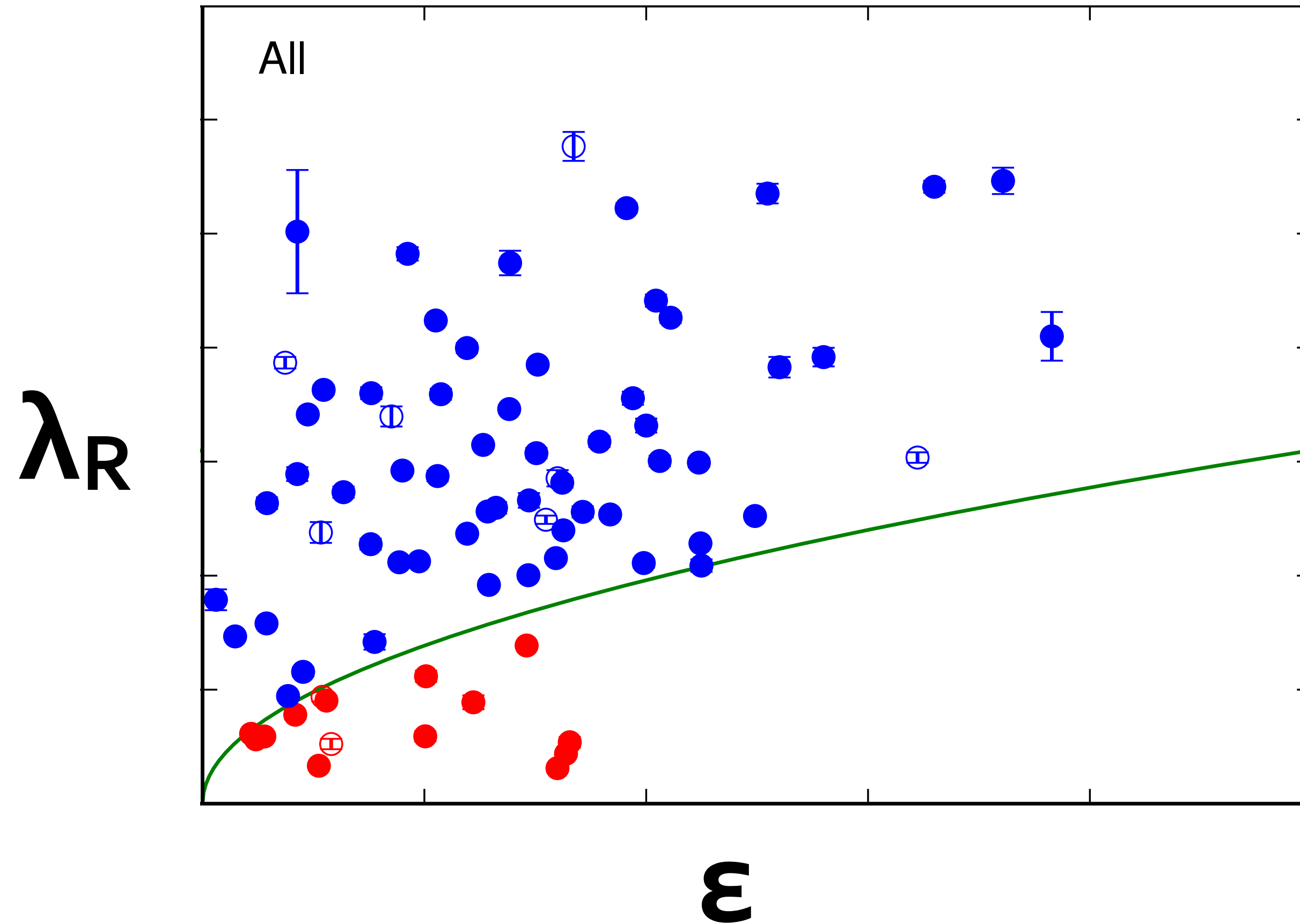
SAMI

sami
galaxy survey

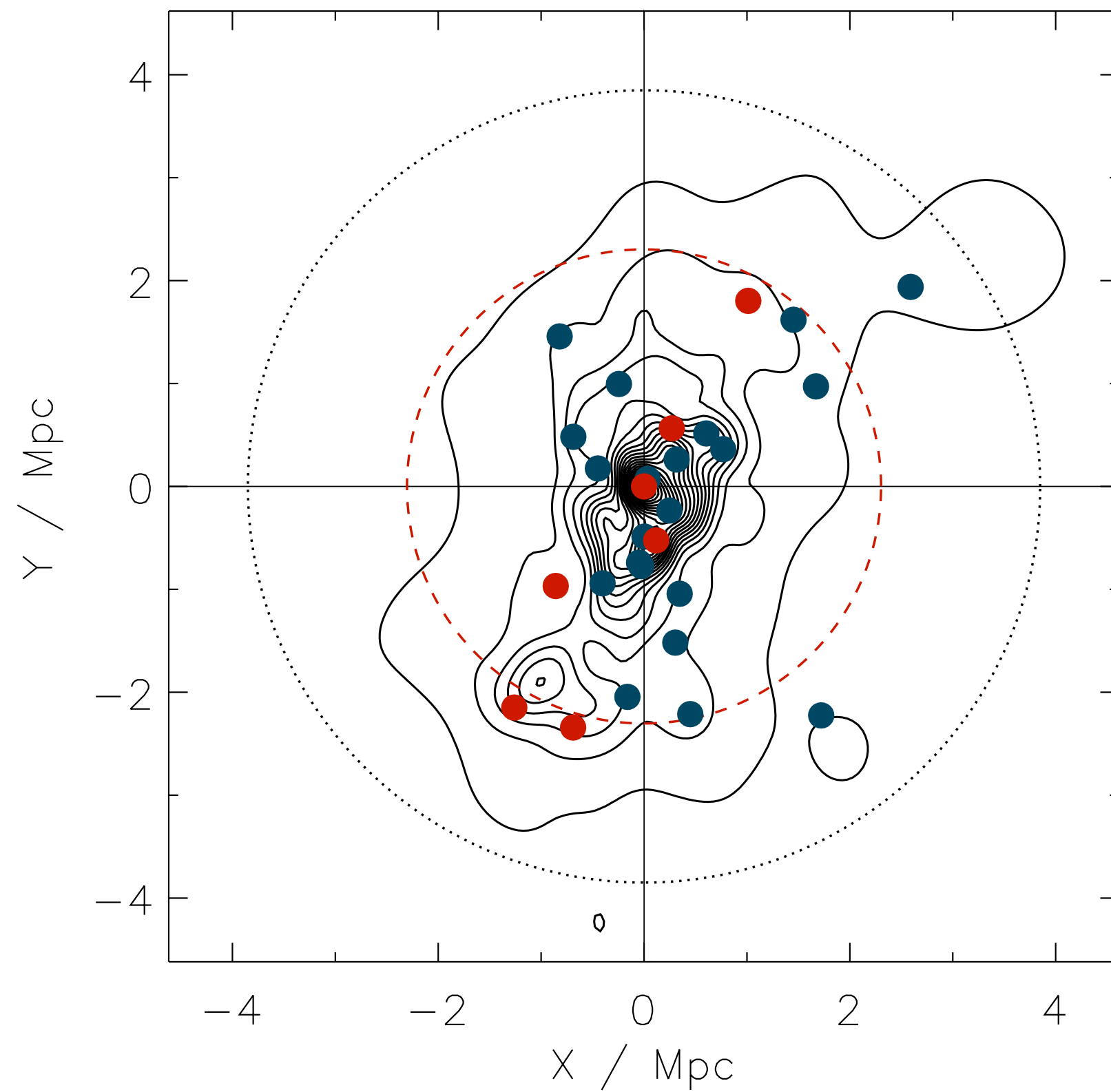




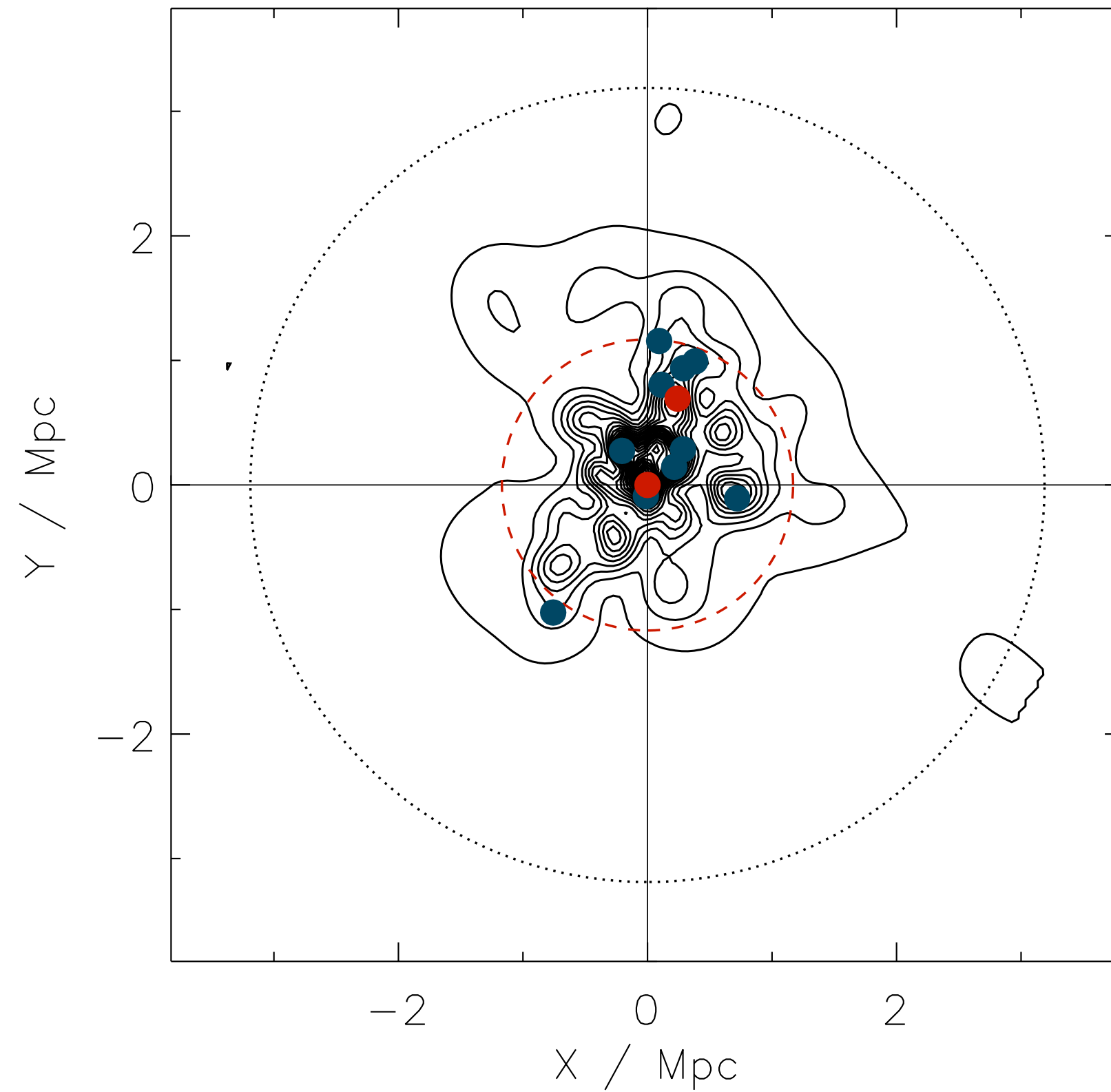




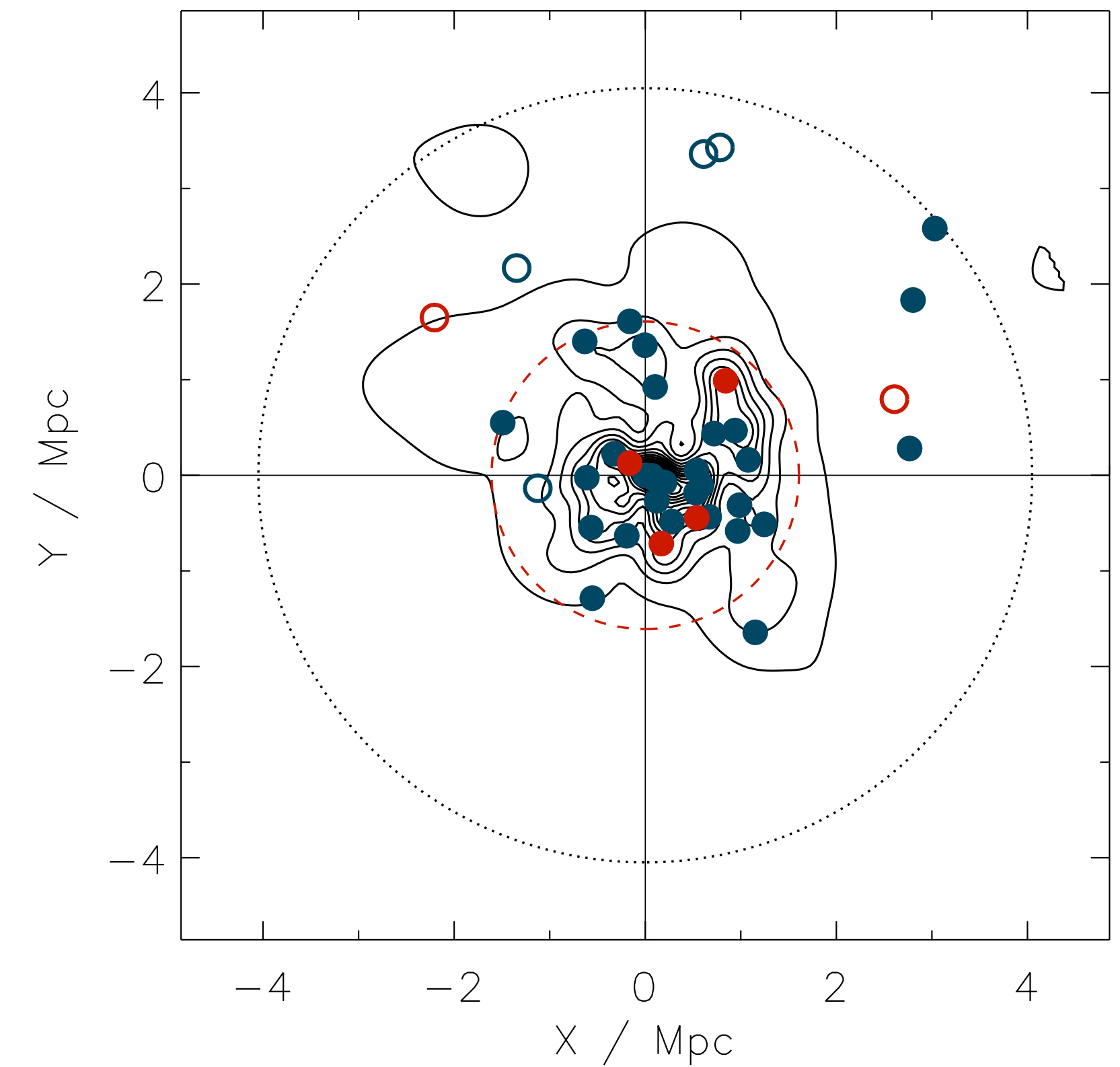
Abell_0085



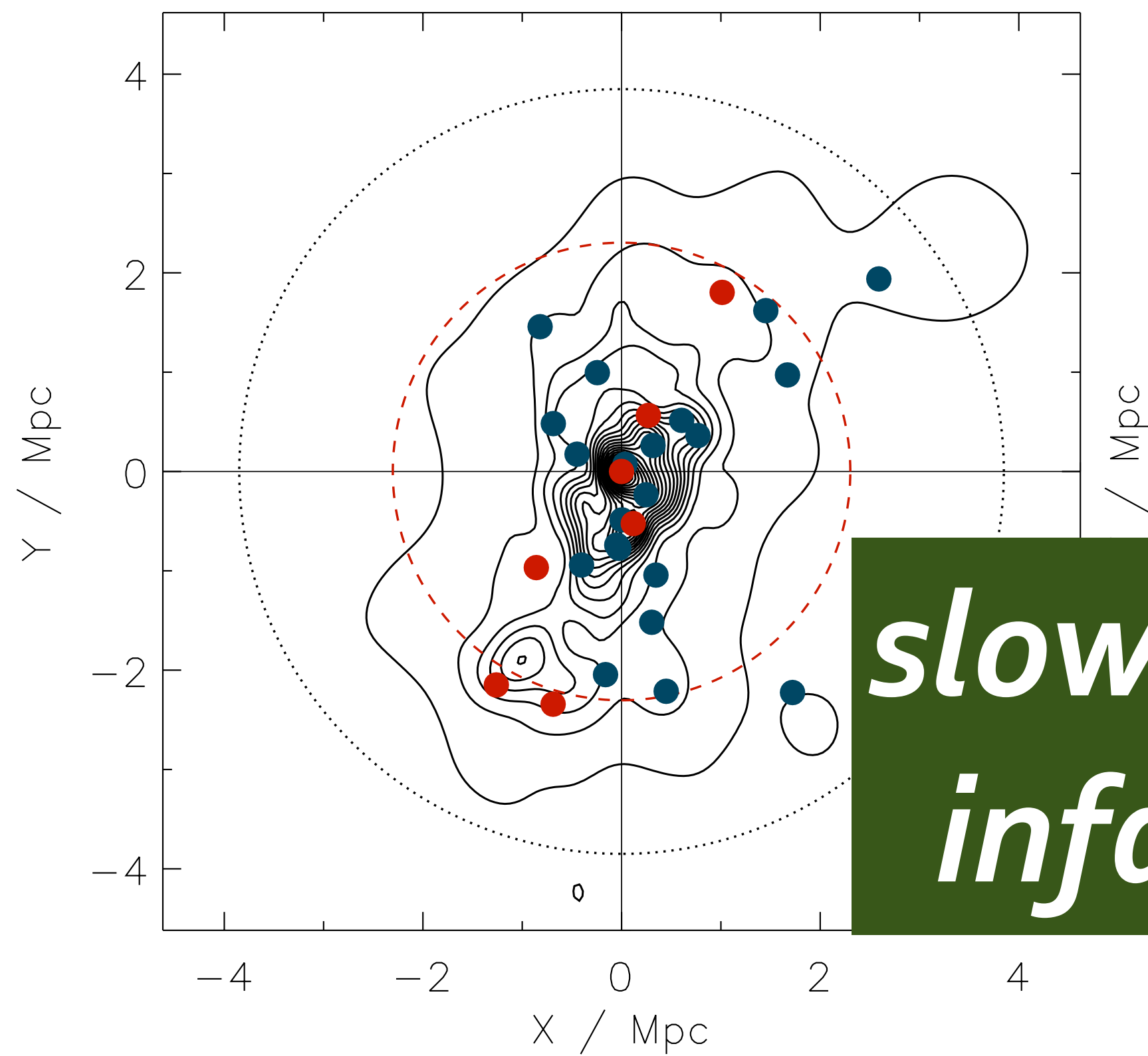
Abell_0168



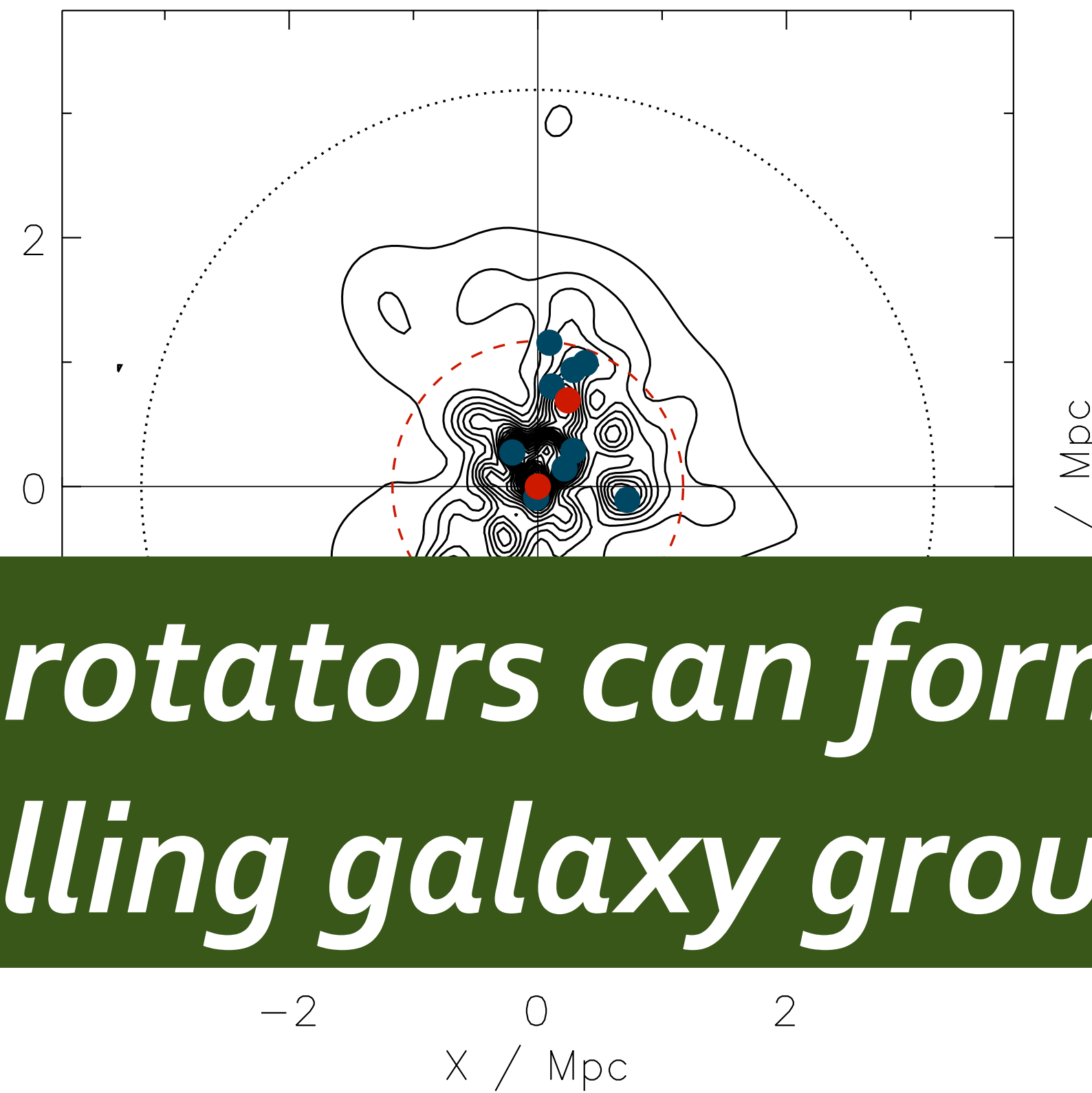
Abell_2399



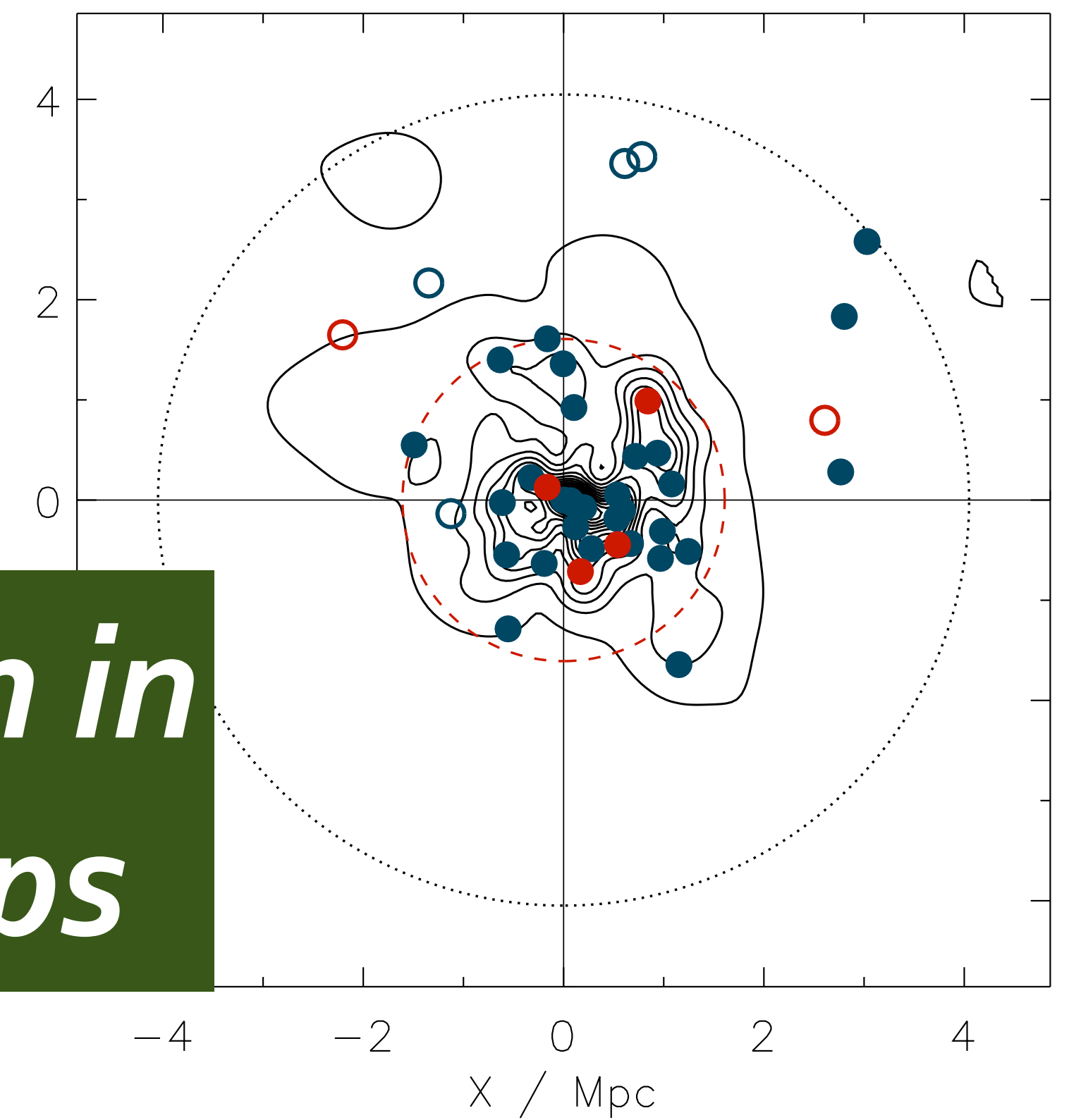
Abell_0085



Abell_0168

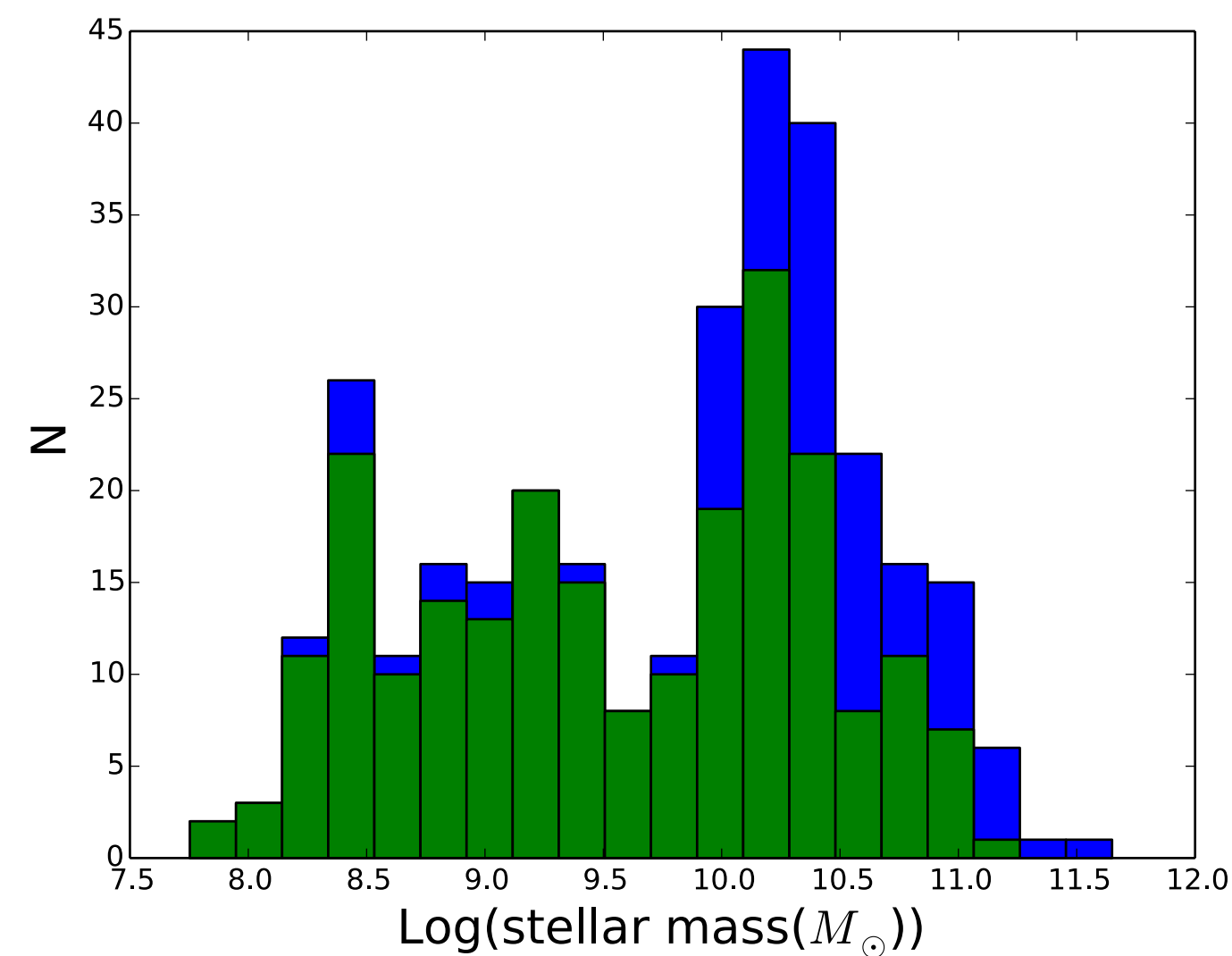
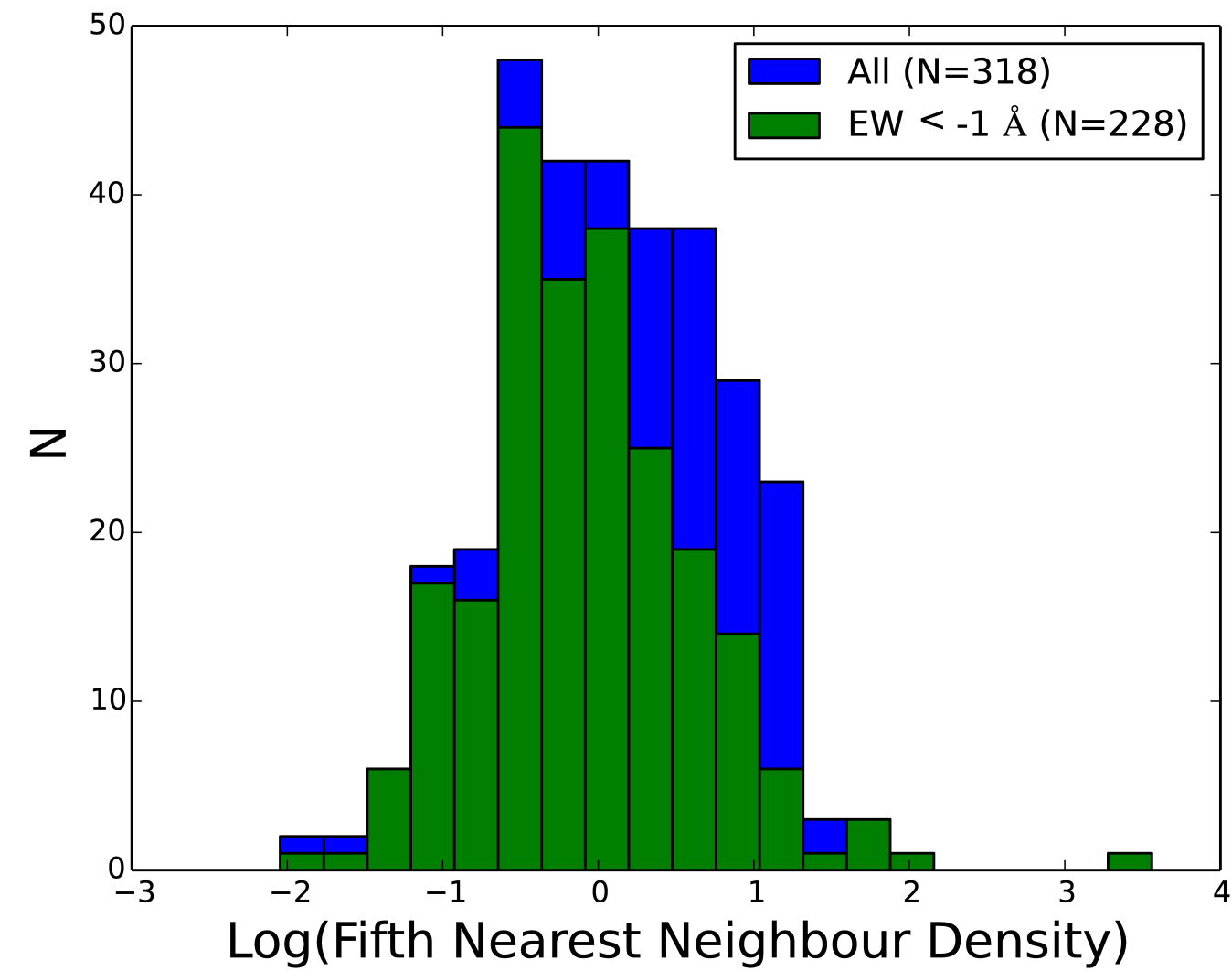


Abell_2399



*slow rotators can form in
infalling galaxy groups*

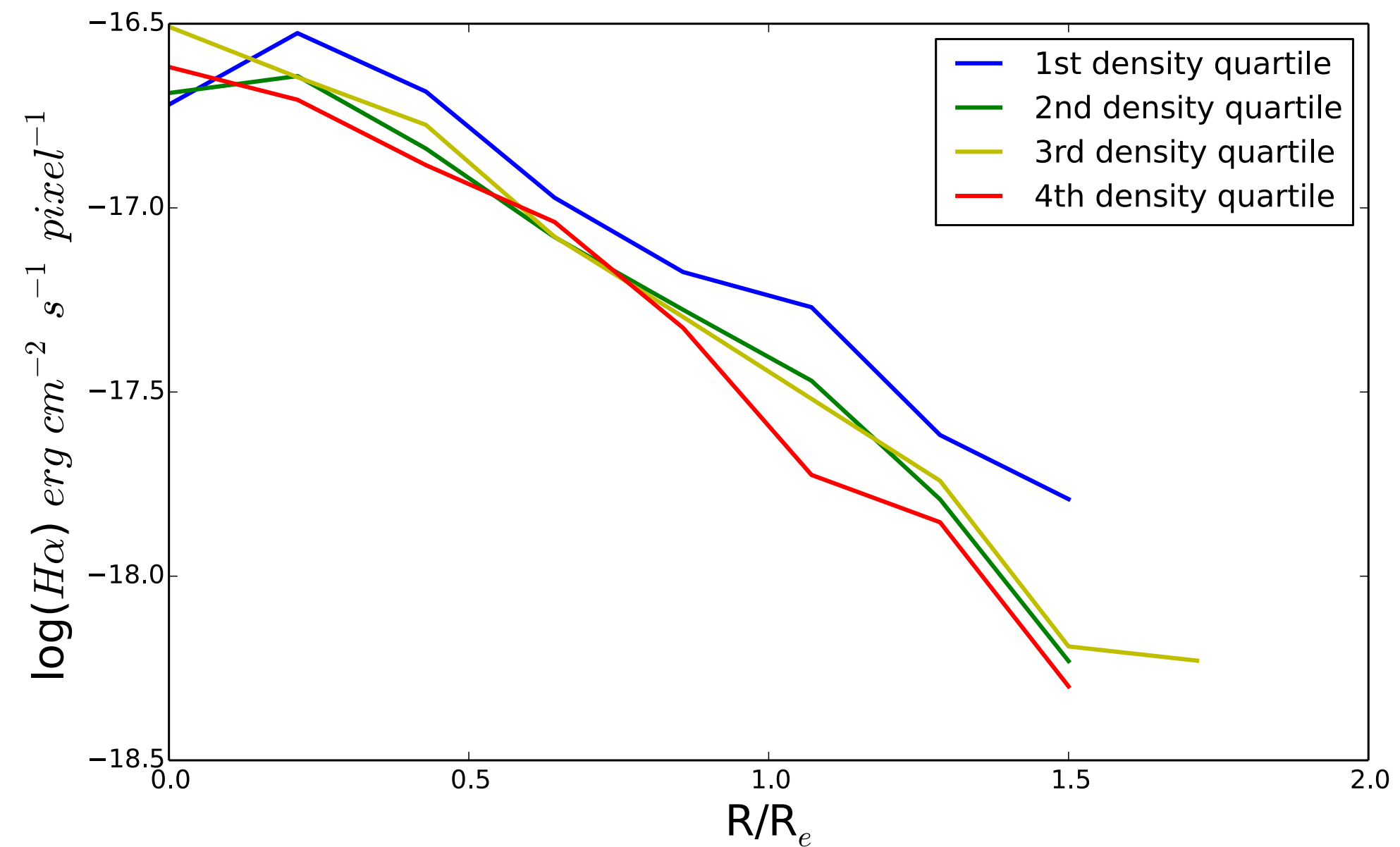
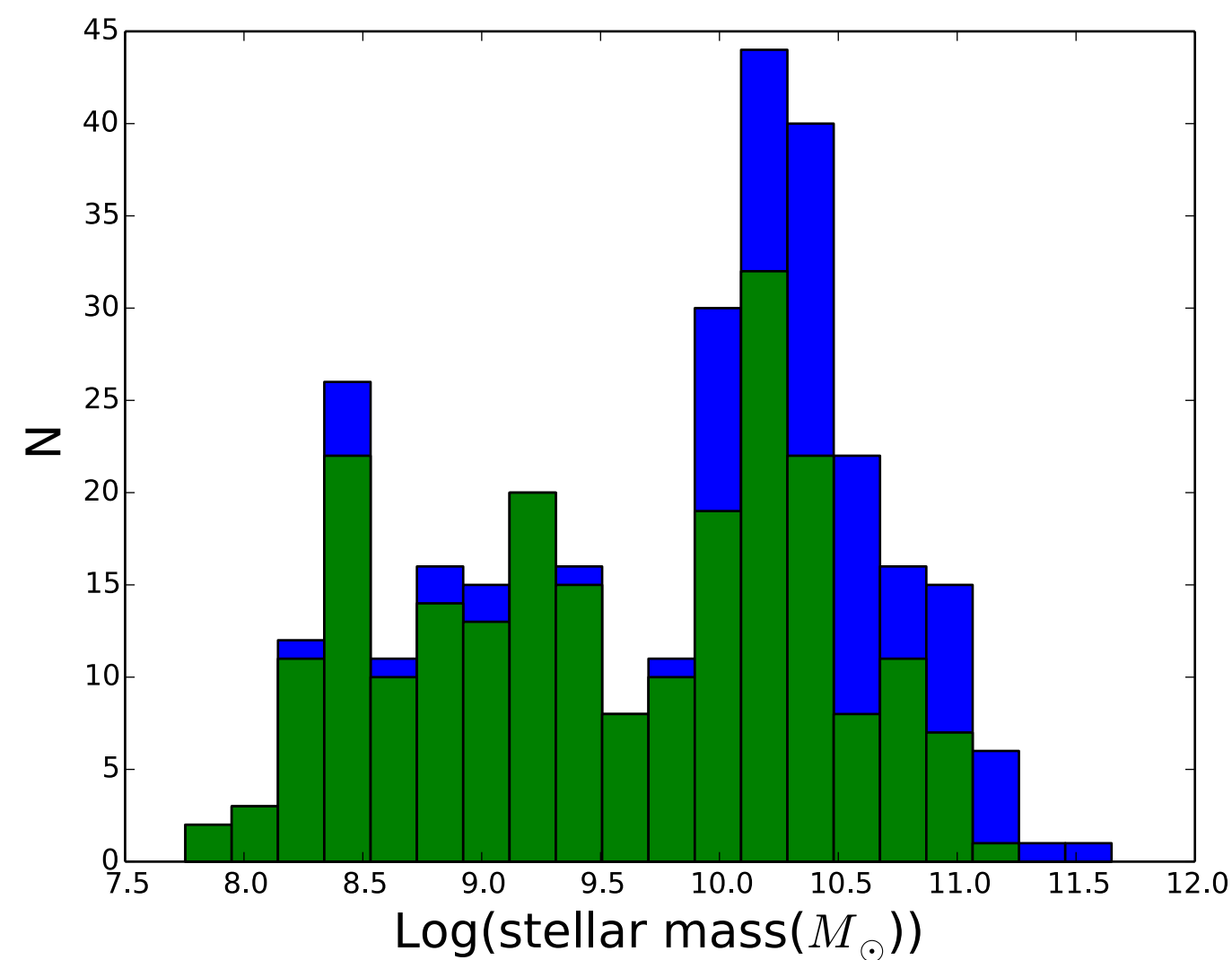
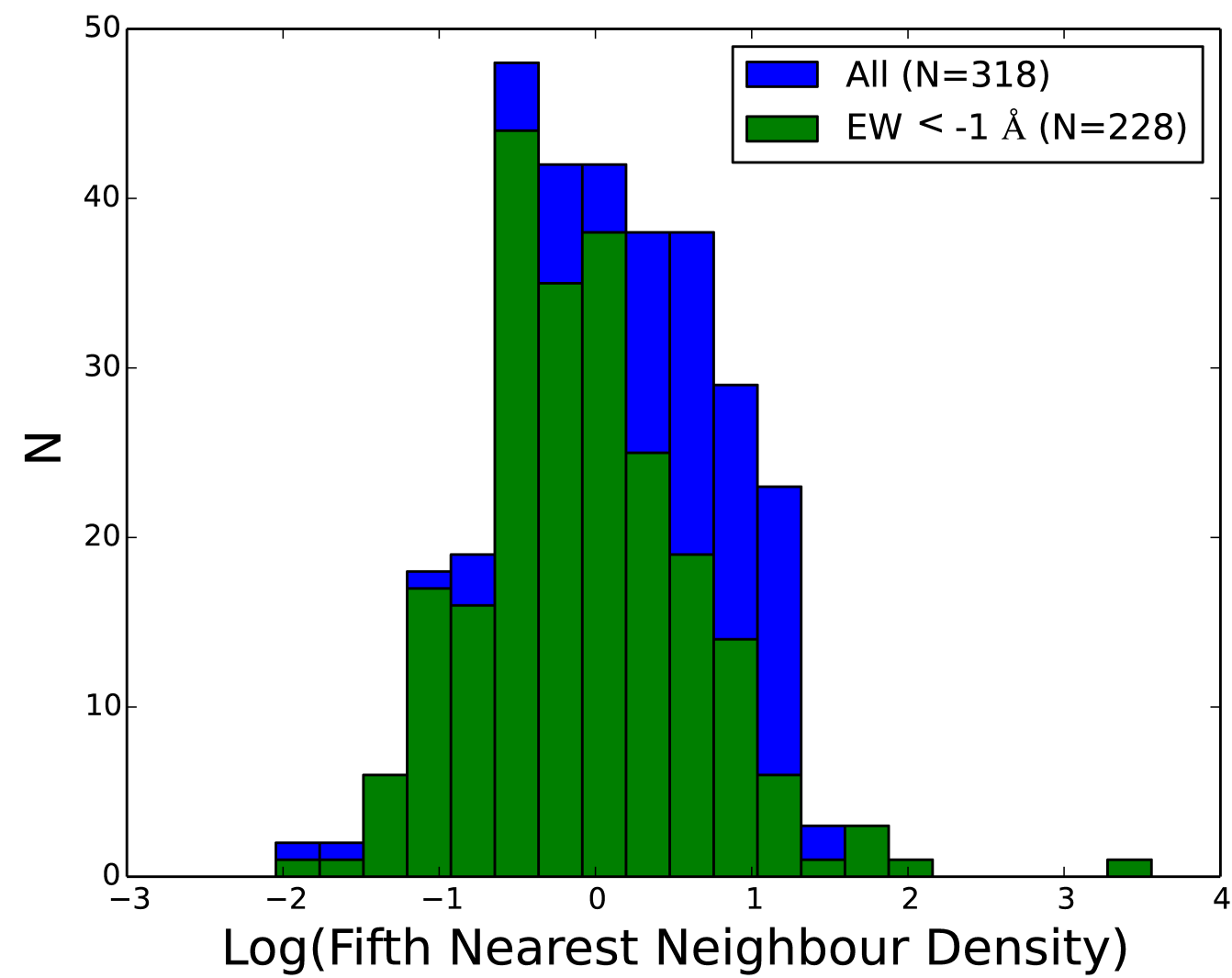
Schaeffer+ morphology-density



any SF

lots of SF

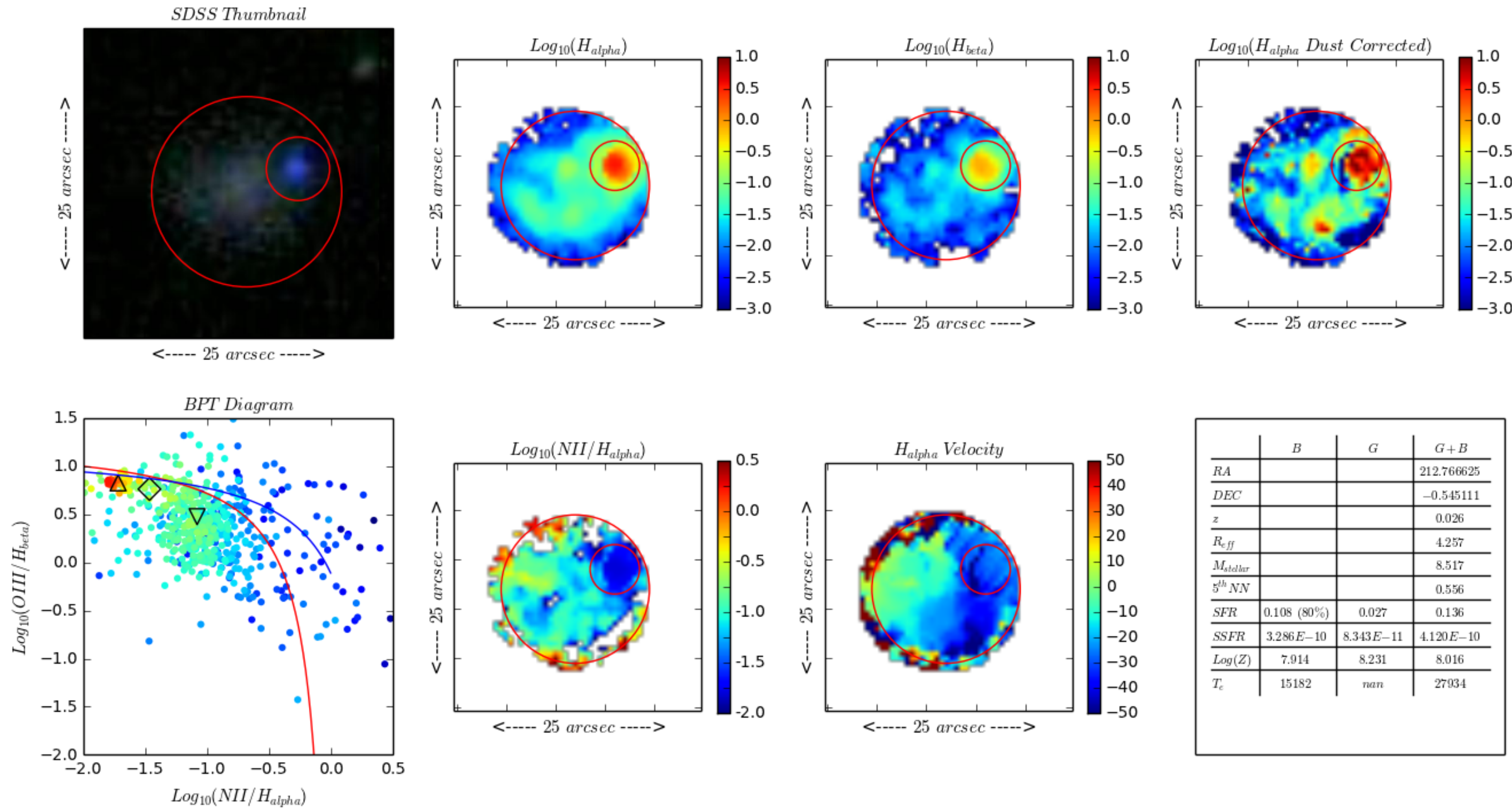
Schaeffer+ morphology-density



any SF

lots of SF

quenching in dense environments





sami
galaxy survey

PI: Scott Croom

sami-survey.org

246.03 (Cecil)

EDR in mid-2014

Join the team!



THE UNIVERSITY OF
SYDNEY