

BERD
@NFDI

Text+ FAIR February Meetup – Let's talk FAIR Digital Editions

Knowledge graphs for interoperable NFDI: Digital editions

Dr. Renat Shigapov, a coordinator of the NFDI Working Group “Knowledge Graphs” in Section “(Meta)data, Terminologies, Provenance”
UBM - Universitätsbibliothek Mannheim, BERD@NFDI

CC BY 4.0

<https://doi.org/10.5281/zenodo.7643214>

15.02.2023

Interoperability



Knowledge Graphs (RDF, SPARQL)

- (Meta)data use a formal, accessible, shared, and broadly applicable language for knowledge representation [an example is RDF]
- (Meta)data use vocabularies that follow the FAIR principles [this can be difficult]
- (Meta)data include qualified references to other (meta)data

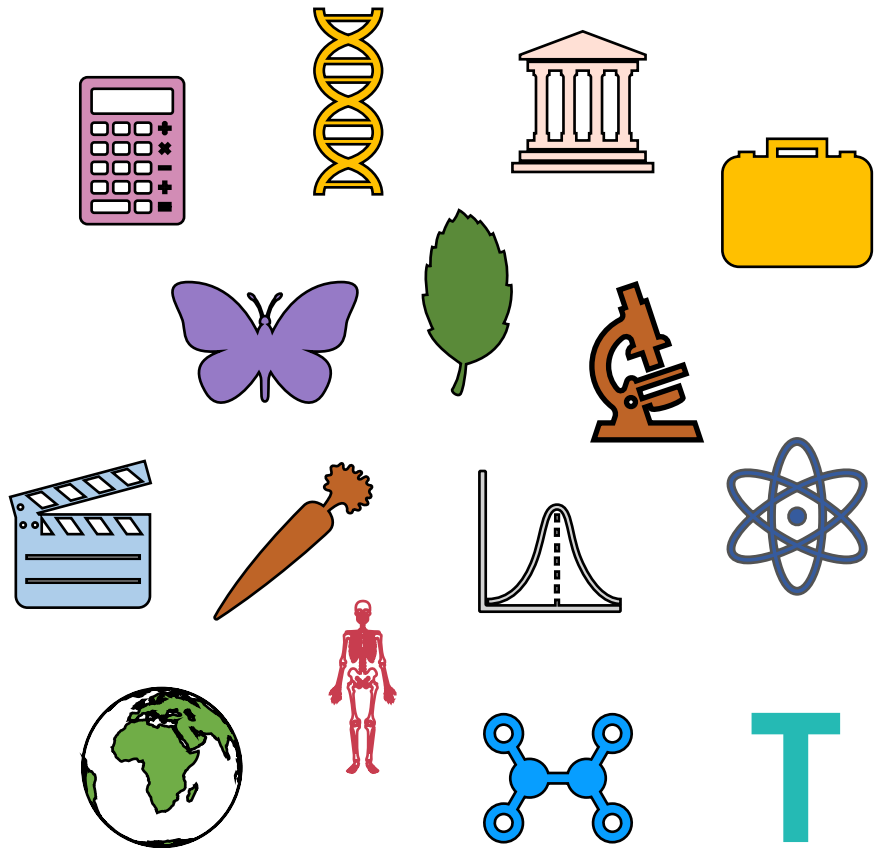


<https://www.go-fair.org>

“Knowledge Graphs are a key technology for implementing the FAIR principles in data infrastructures by ensuring interoperability for both humans and machines.” Charter of the NFDI Working Group “Knowledge Graphs”



26 research data infrastructures with domain-specific (meta)data standards:



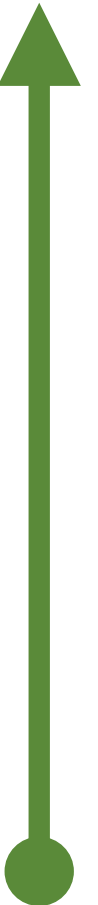
Various data:

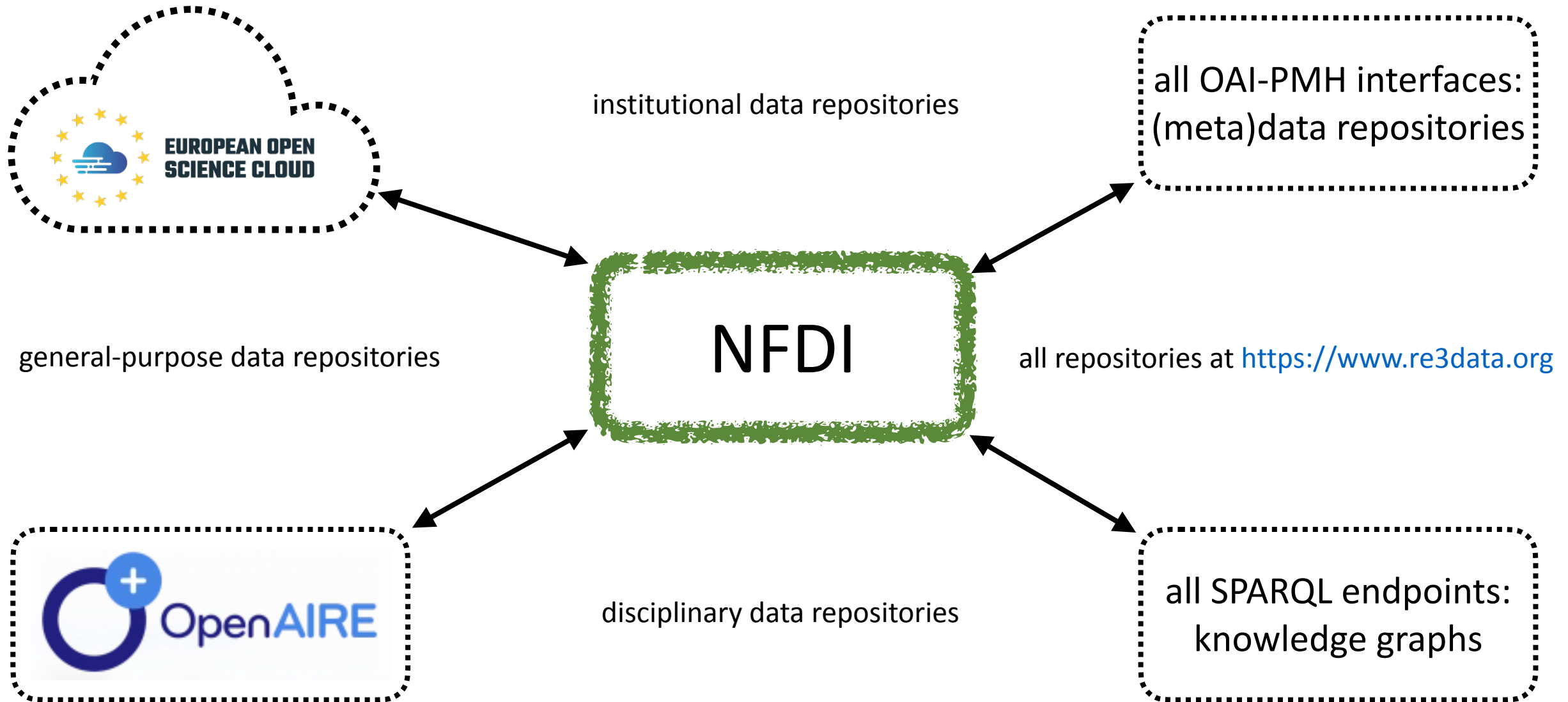
texts
audio
video
tables
images
surveys
models
samples
software
websites
formulas
reactions
databases
collections
EL notebooks
digital editions
lexical resources

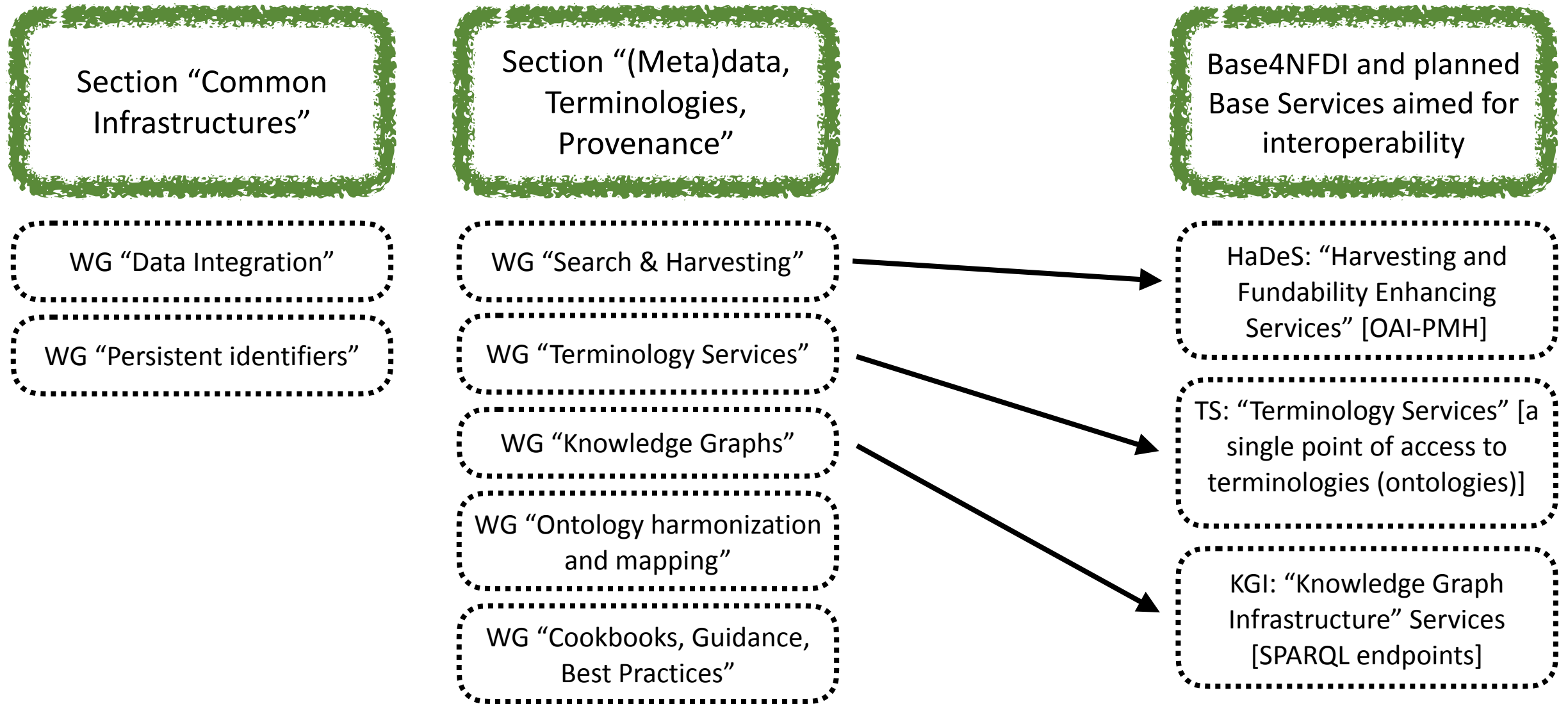
The degree of internal interoperability in NFDI:

HIGH: consortia provide **terminology (ontology) services** & metadata **knowledge graphs** (a domain ontology + entities) for their research data

LOW: consortia don't provide portals for searching over metadata using the vocabularies following the FAIR principles









Title	Text+ Partner
Theodor Fontane: Notizbücher. Digitale genetisch-kritische und kommentierte Edition	SUB
ARCHITRAVE. Kunst und Architektur in Paris und Versailles im Spiegel deutscher Reiseberichte des Barock	SUB
Maps of God. Building a Portal to Visual Kabbalah	SUB
Bibliothek der Neologie	SUB
Klaus Mollenhauer Gesamtausgabe	SUB
Hannah Arendt. Kritische Gesamtausgabe	SUB
Textdatenbank und Wörterbuch des Klassischen Maya	SUB; NRWAW
Heyne Digital (ARCHAE018)	SUB
Wirkungsgeschichte von Goethes Werk „Zur Farbenlehre“ in Berlin 1810–1832	SUB
Die syrischen und arabischen Ahiqar-Texte	SUB
AdW-Digital: Briefportal Leibniz	SUB, AdWG
AdW-Digital: Carl Friedrich Gauß Briefwechsel	SUB, AdWG
edition humboldt digital	BBAW
Leibniz-Edition. Die Akademie-Ausgabe	BBAW

<https://www.text-plus.org/forschungsdaten/editions-list>

RIDE – A review journal for digital editions and resources
published by the IDE

About Issues Data Reviewers Reviewing Criteria

Home ▸ Issues

TEI-XML + OAI-PMH

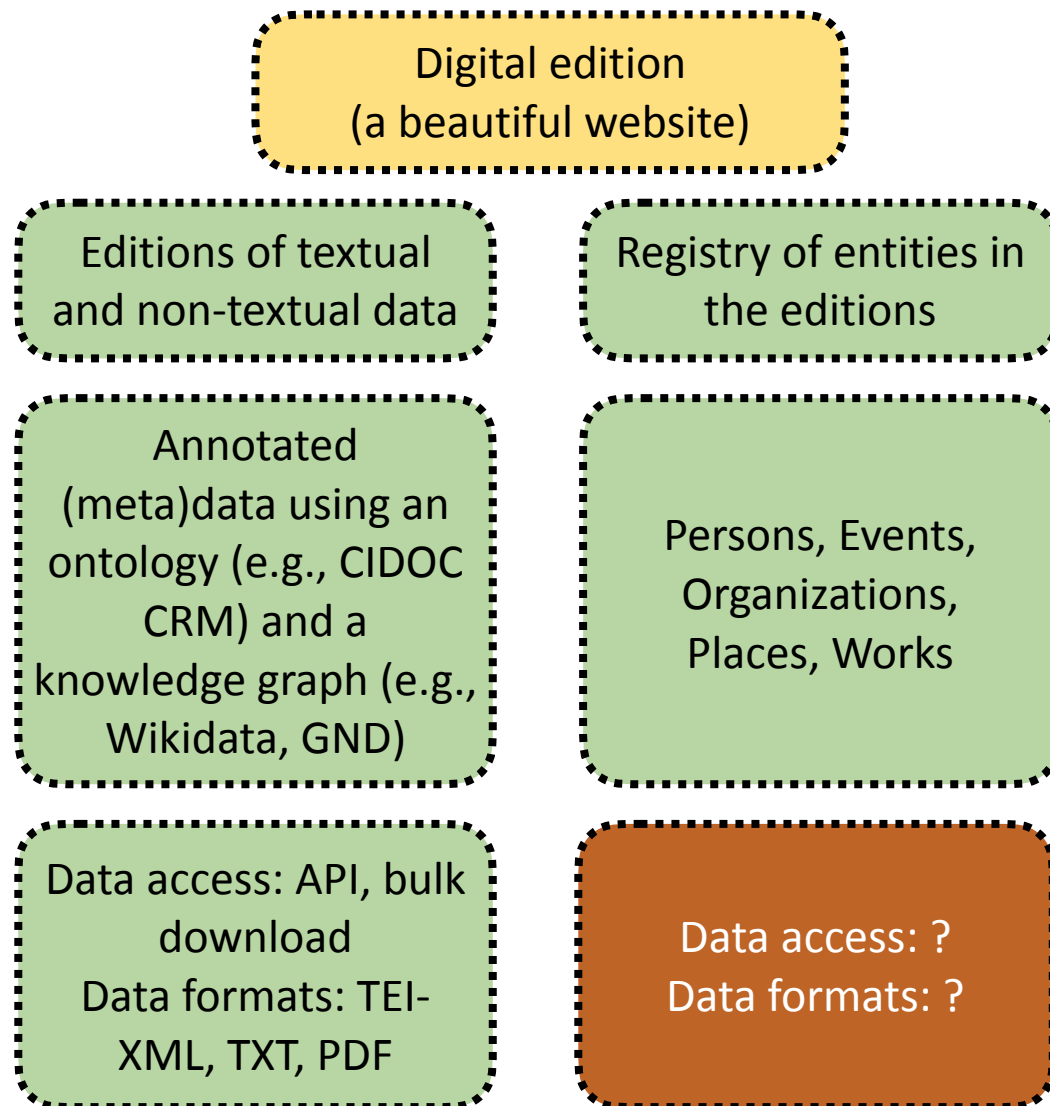
Issues

RIDE is published in irregular intervals. So far, the following issues have been published:

Issue 15: Tools and Environments (December 2022)

- Digital Mappa – Simple and Web-based Annotations
- Mei-friend. A viewer and last-mile editor for MEI score encodings
- Stylo, un éditeur pour les sciences humaines et sociales
- TEI Critical Apparatus Toolbox: Web-based tools for ongoing XML-TEI editions
- TEITOK, a visual solution for XML/TEI encoding: editing, annotating and hosting linguistic corpora

<https://ride.i-d-e.de>

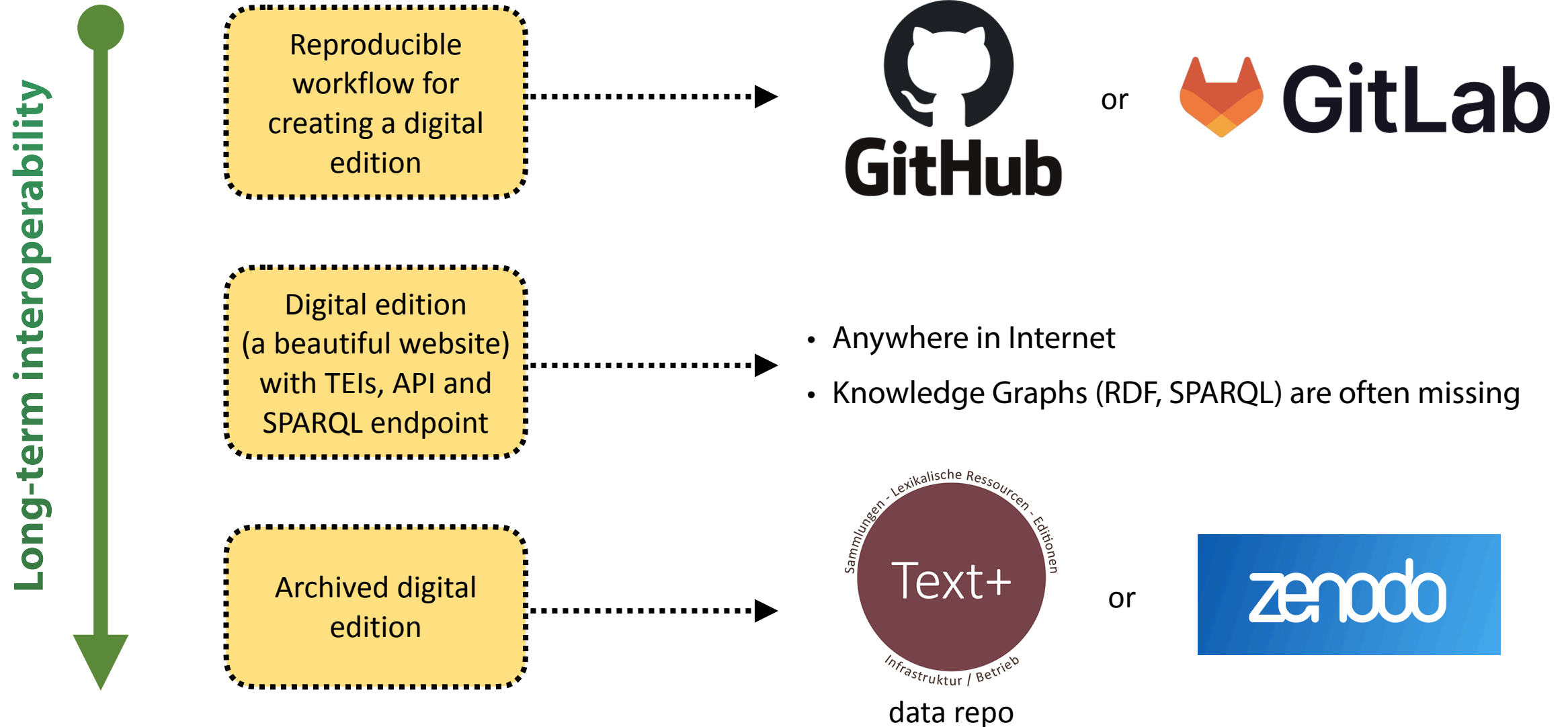


Anything else?

Yes, knowledge graphs, please

Practical tips

- Create a knowledge graph from your metadata (*including your registry of entities*)
- Provide access to your RDF-metadata via SPARQL endpoints. This enables reusing metadata by both humans and machines
- Provide RDF-metadata dumps



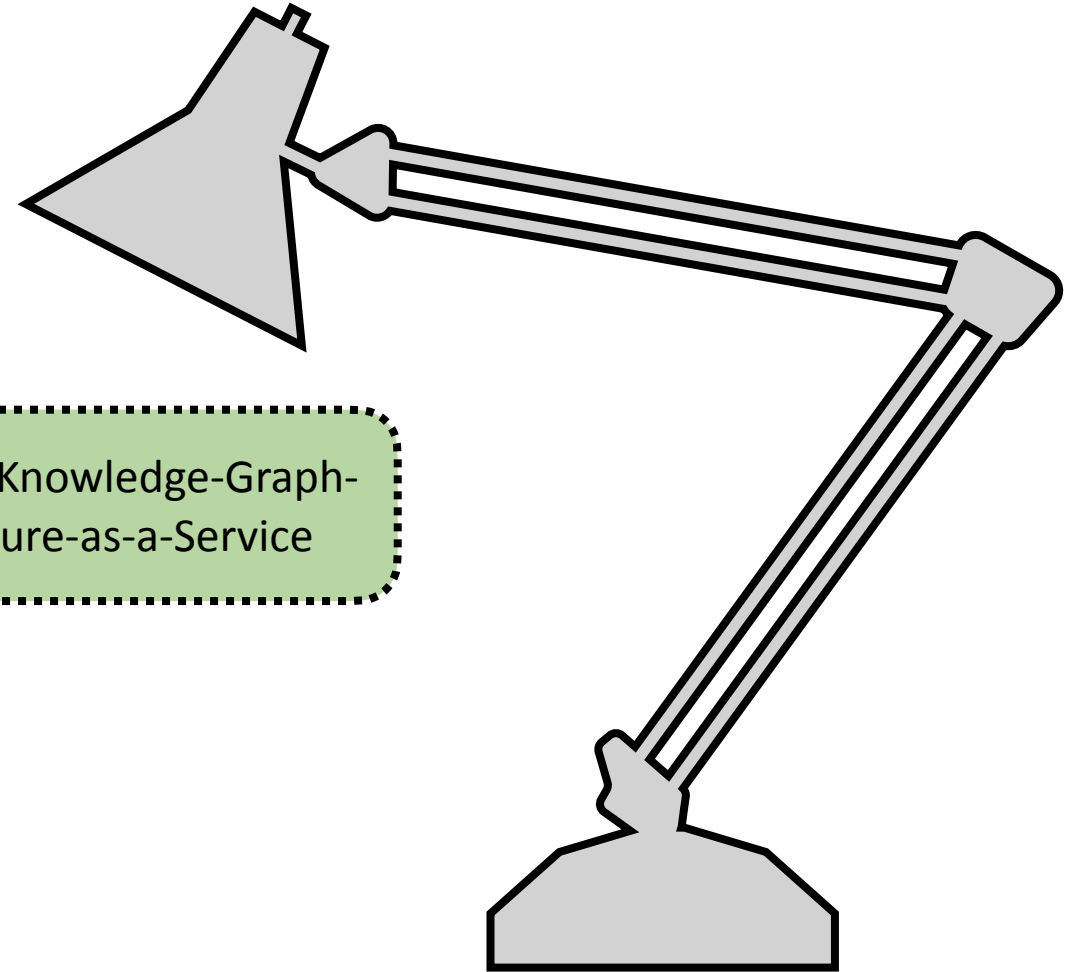


Limited manpower in a research project

Relatively complex technology stack

Inertia

NFDI-driven Knowledge-Graph-Infrastructure-as-a-Service



Knowledge Graph Infrastructure (KGI): Idea

idea:

easily reusable by KGI providers

easily usable by KG creators

consultancy on KG creation

goal:

to satisfy the knowledge graph needs of everyone in the German research data landscape: NFDI consortia, institutions and potentially all researchers

KGI4NFDI

target group:

researchers

data centers

institutions

consortia

Knowledge Graph Infrastructure (KGI): Where to learn more?

KGI Base Service proposal:

<https://docs.google.com/document/d/1kPrj-G3FYeo2QkxJUyokCwd6eI3VN5Uo8UnUZFDR9MU>

NFDI WG “Knowledge Graphs” in Section “(Meta)data, Terminologies, Provenance”

Mailing list of WG KGs:

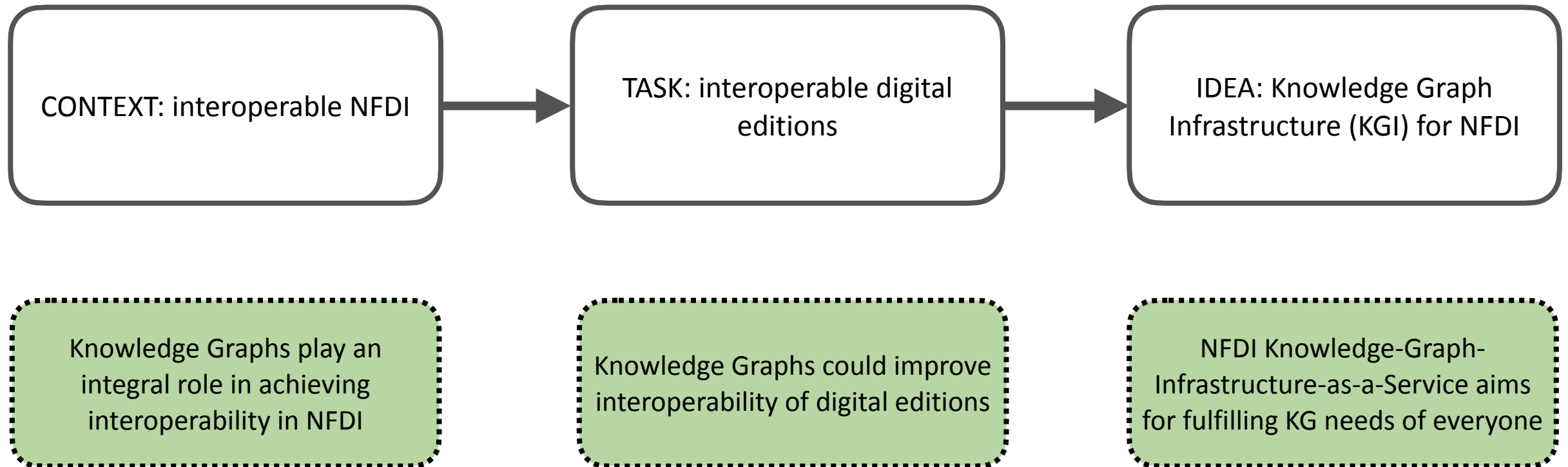
<https://lists.nfdi.de/postorius/lists/section-metadata-wg-kg.lists.nfdi.de>

Charter of WG KGs:

<https://doi.org/10.5281/zenodo.7515324>

Questions?

email to renat.shigapov@uni-mannheim.de



1. Kraft, S. et al.: Nationale Forschungsdateninfrastruktur (NFDI), E-Science-Tage 2021: Share Your Research Data, Heidelberg: heiBOOKS, 2022, p. 374-383. <https://doi.org/10.11588/heibooks.979.c13752>
2. Kraft, S., et al. (2021). Nationale Forschungsdateninfrastruktur (NFDI) E. V.: Aufbau Und Ziele. Bausteine Forschungsdatenmanagement, Nr. 2. <https://doi.org/10.17192/bfdm.2021.2.8332>
3. Hartl, N., Wössner, E. & Sure-Vetter, Y. Nationale Forschungsdateninfrastruktur (NFDI). Informatik Spektrum 44, 370–373 (2021). <https://doi.org/10.1007/s00287-021-01392-6>
4. Diepenbroek, M., et al. (2021). Sektionskonzept Common Infrastructures zur Einrichtung einer Sektion im Verein Nationale Forschungsdateninfrastruktur (NFDI) e.V. Zenodo. <https://doi.org/10.5281/zenodo.5607490>
5. Koepler, O., et al. (2021). Sektionskonzept Meta(daten), Terminologien und Provenienz zur Einrichtung einer Sektion im Verein Nationale Forschungsdateninfrastruktur (NFDI) e.V. Zenodo. <https://doi.org/10.5281/zenodo.5619089>
6. Stocker, M., et al. (2022). Knowledge Graphs - Working Group Charter (NFDI section-metadata). Zenodo. <https://doi.org/10.5281/zenodo.7515324>
7. Shigapov, R. (2022). Knowledge graphs in BERD and in NFDI. Focused Tutorial on Capturing, Enriching, Disseminating Research Data Objects. Use Cases from Text+, NFDI4Culture and BERD@NFDI, Mannheim and online. Zenodo. <https://doi.org/10.5281/zenodo.7373258>
8. Shigapov, R. (2021). Wikibase Knowledge Graphs for Data Management & Data Science. Data Literacy Snacks 2021 in BERD@BW. <https://madoc.bib.uni-mannheim.de/59865>