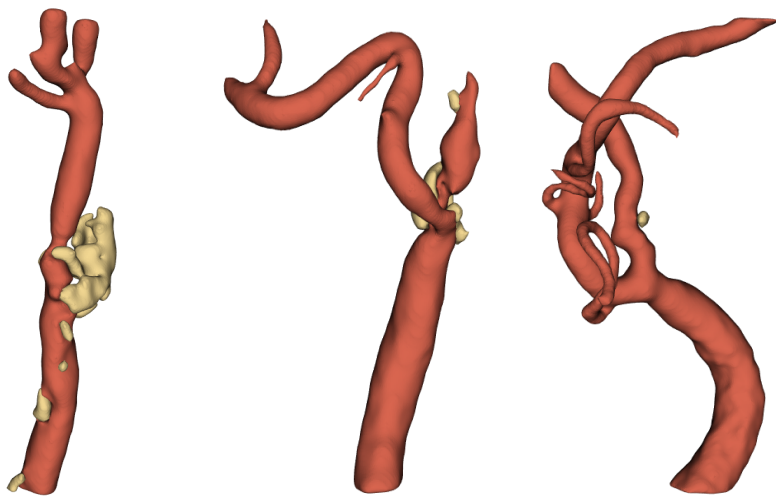


A Dataset of Reconstructed Carotid Bifurcation Lumen and Plaque Models with Centerline Tree

This supplementary material shows the carotid bifurcation models that were extracted from CTA images using the CarotidAnalyzer pipeline: <https://github.com/PepeEulzer/CarotidAnalyzer>.

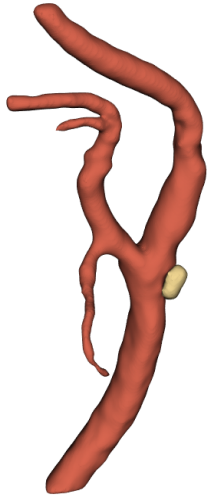
The models are composed of the vessel lumen (red) and calcified plaque (yellow). They are oriented as if facing the patient from the front. The left and right sides are grouped for each case. The missing models were not extracted because they either contained a full stenosis (no visible lumen) or a stent (cannot be reliably segmented). The model dataset is available at: <https://doi.org/10.5281/zenodo.7634644>.



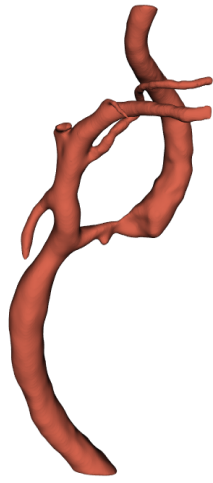
case01_left

case02_right

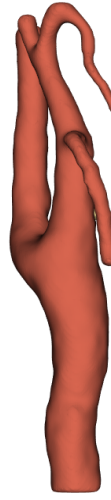
case02_left



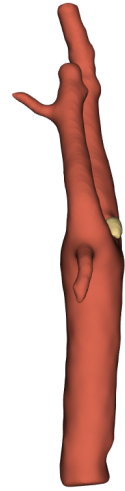
case03_right



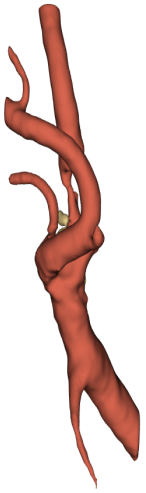
case03_left



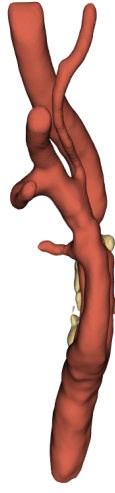
case04_right



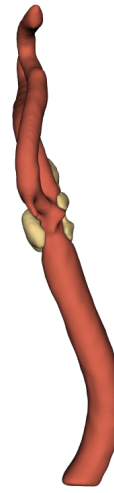
case04_left



case05_right



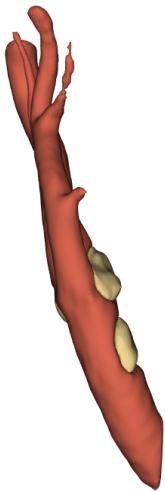
case05_left



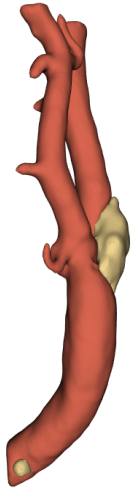
case06_right



case06_left



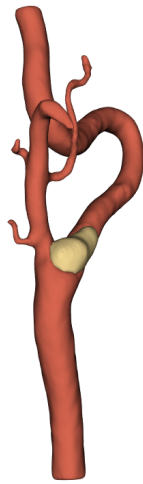
case07_right



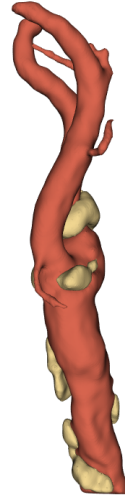
case07_left



case08_right



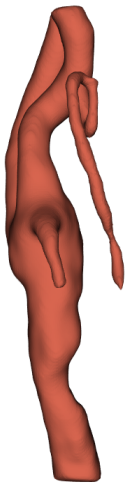
case09_left



case10_right



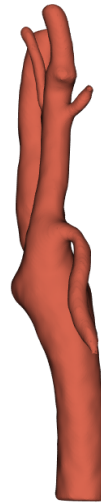
case10_left



case11_right



case11_left



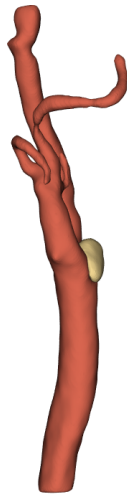
case12_right



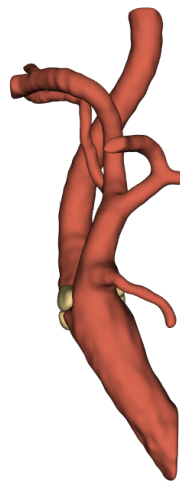
case12_left



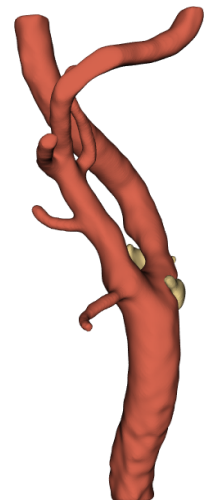
case13_right



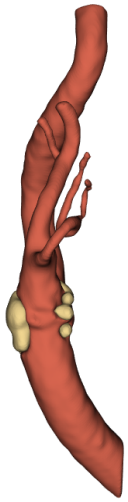
case13_left



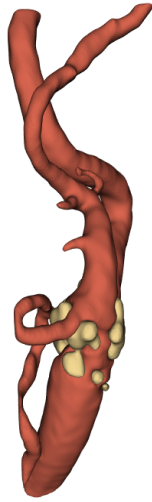
case14_right



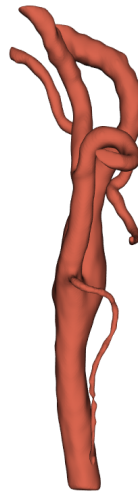
case14_left



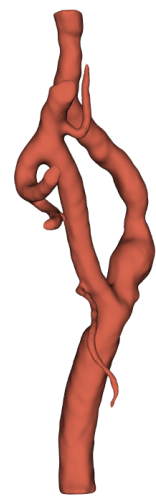
case15_right



case15_left



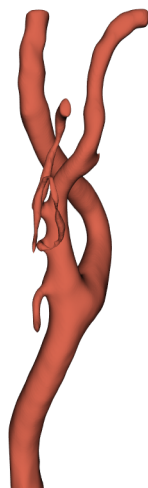
case16_right



case16_left



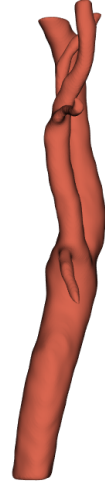
case17_right



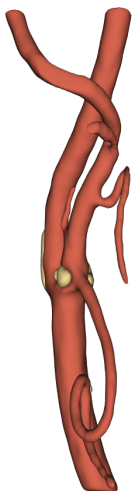
case17_left



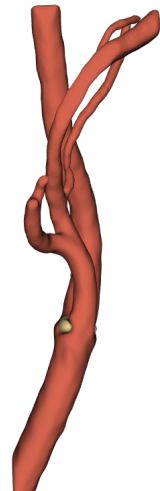
case18_right



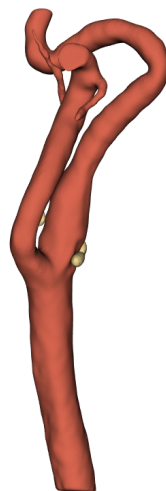
case18_left



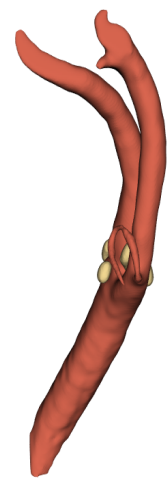
case19_right



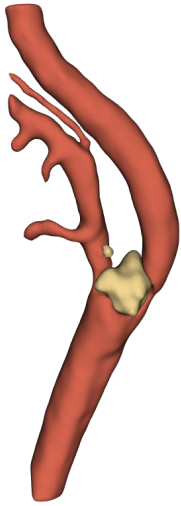
case19_left



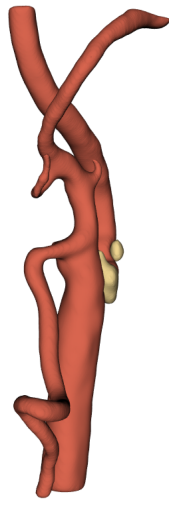
case20_right



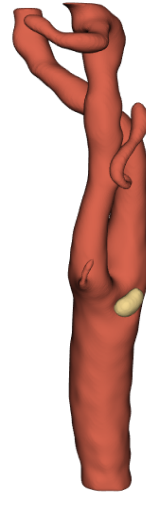
case20_left



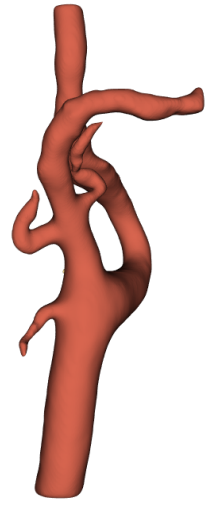
case21_right



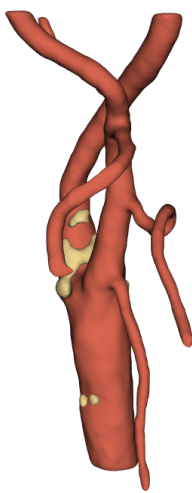
case21_left



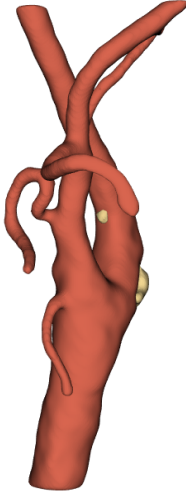
case22_right



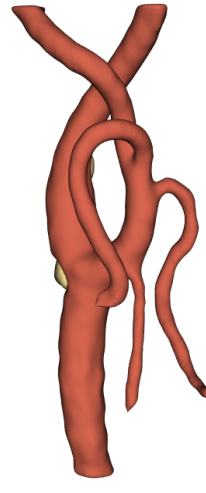
case22_left



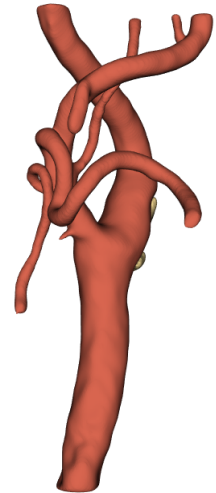
case23_right



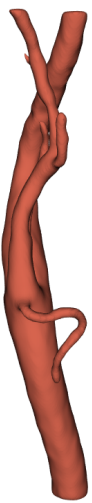
case23_left



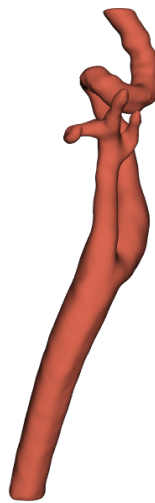
case24_right



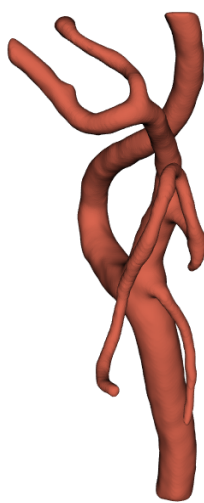
case24_left



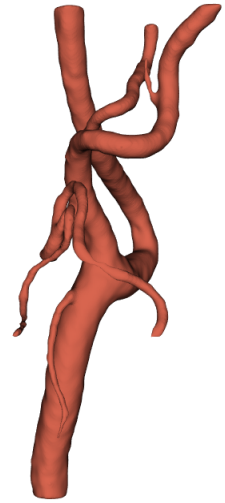
case25_right



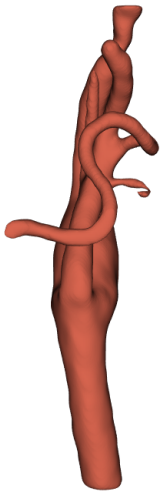
case25_left



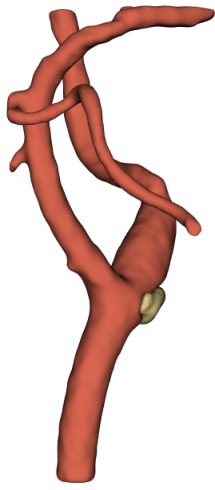
case26_right



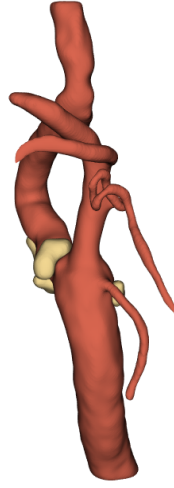
case26_left



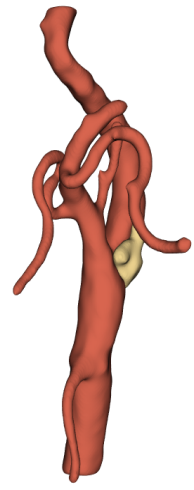
case27_right



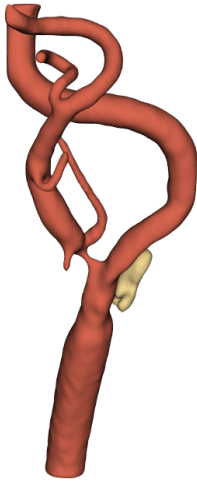
case27_left



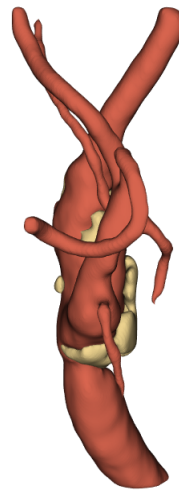
case28_right



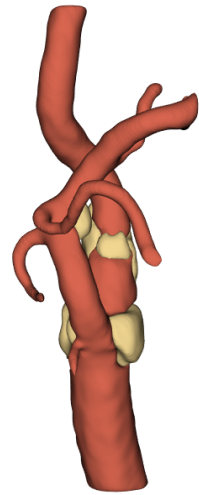
case28_left



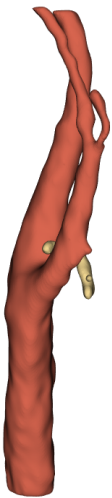
case29_right



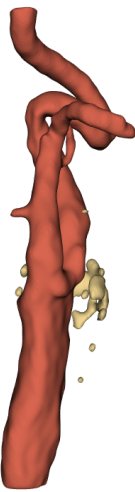
case30_right



case30_left



case31_right



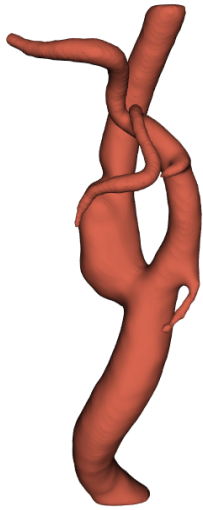
case31_left



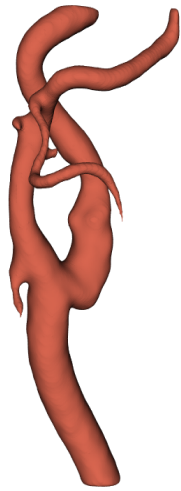
case32_right



case32_left



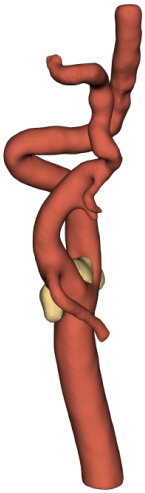
case33_right



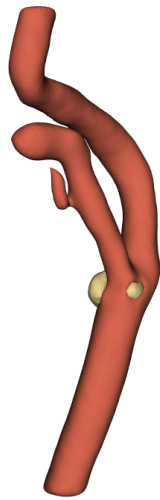
case33_left



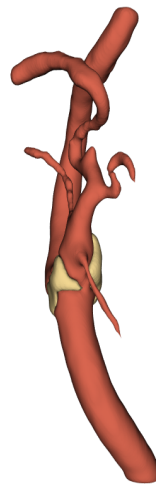
case34_right



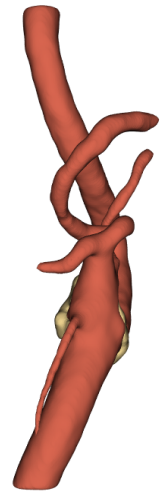
case35_right



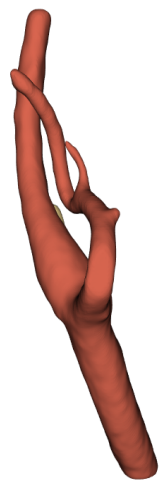
case35_left



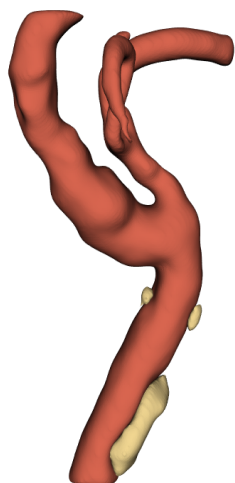
case36_right



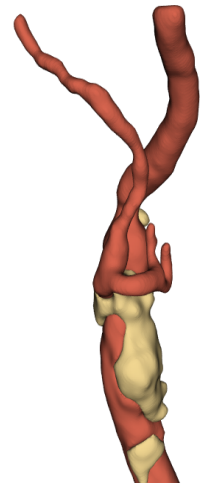
case36_left



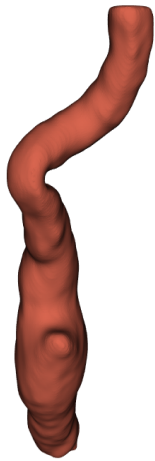
case37_right



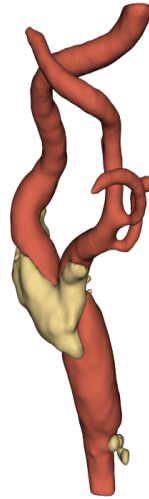
case37_left



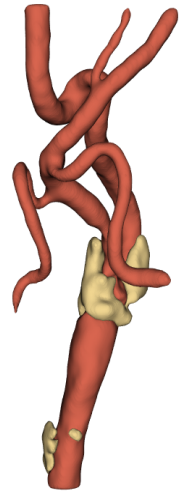
case38_right



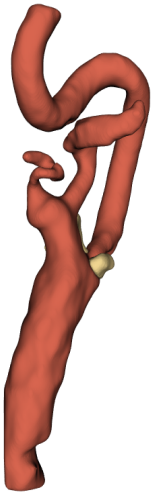
case39_left



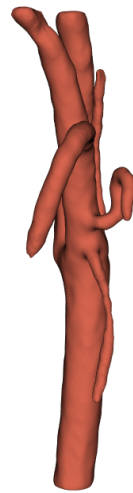
case40_right



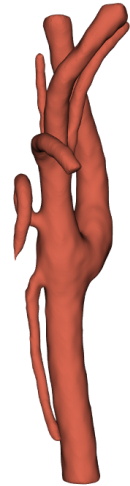
case40_left



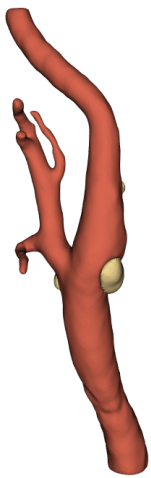
case41_left



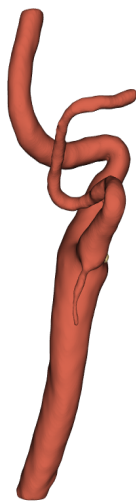
case42_right



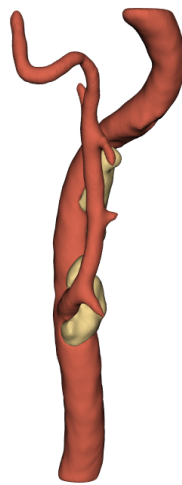
case42_left



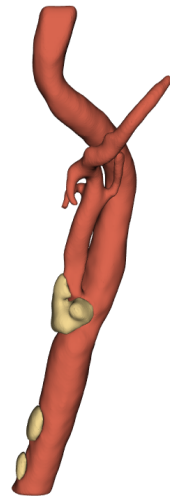
case43_right



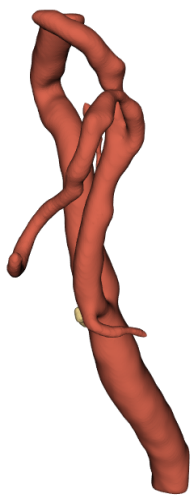
case43_left



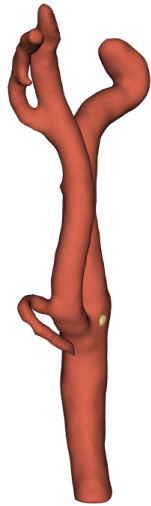
case44_right



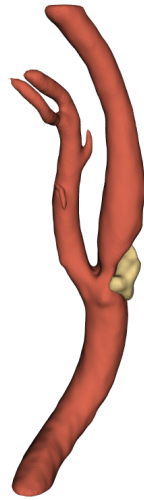
case44_left



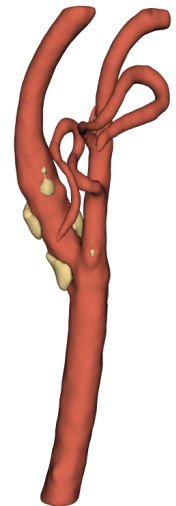
case45_right



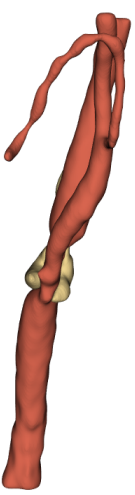
case45_left



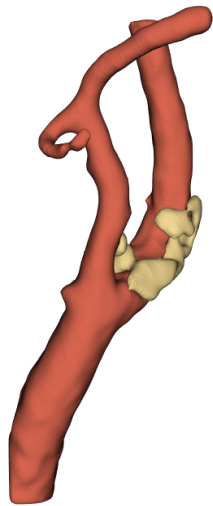
case46_right



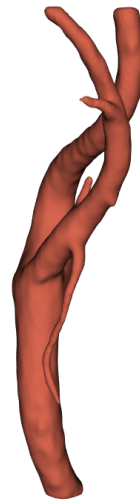
case46_left



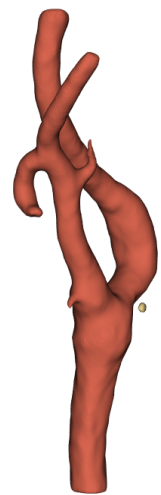
case47_right



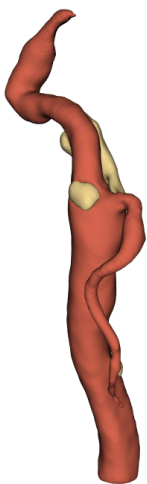
case47_left



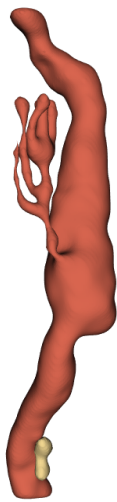
case48_right



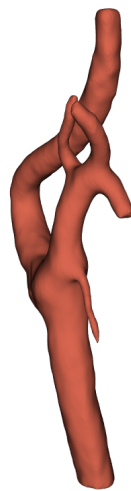
case48_left



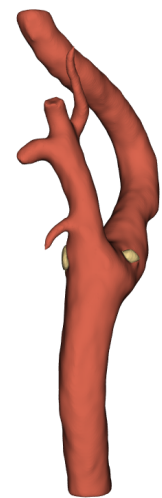
case49_right



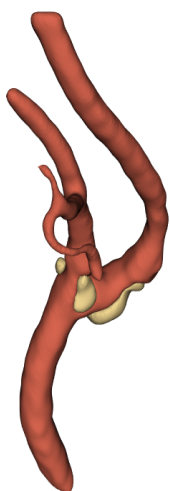
case49_left



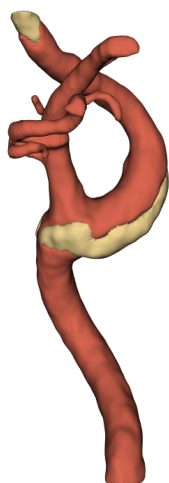
case50_right



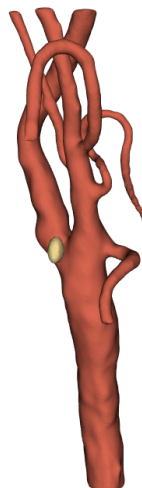
case50_left



case51_right



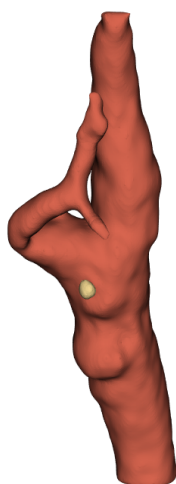
case51_left



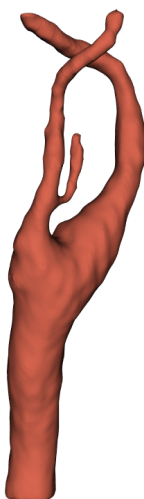
case52_right



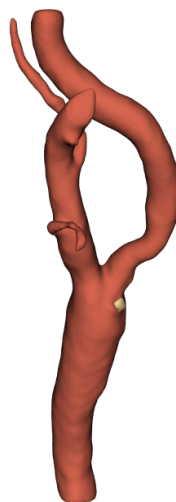
case52_left



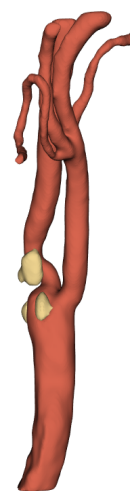
case53_right



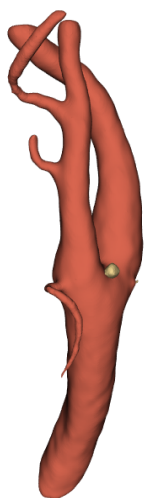
case53_left



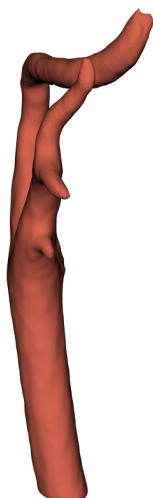
case54_right



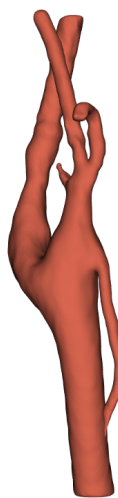
case54_left



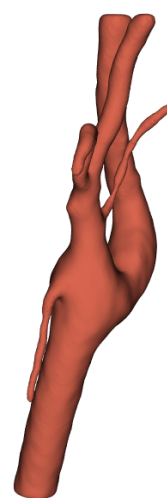
case55_right



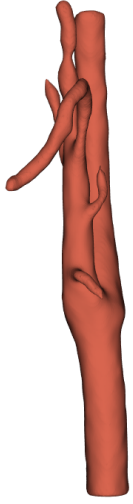
case55_left



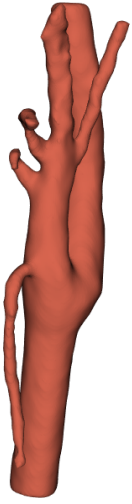
case56_right



case56_left



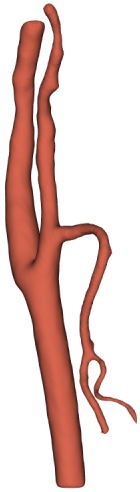
case57_right



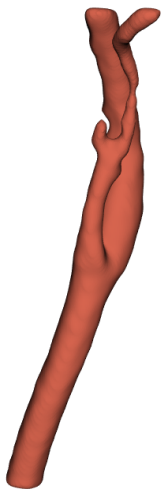
case57_left



case58_left



case59_right



case59_left