

SDS-resistant complex in presence of AA + detergents

- | | | | |
|---|--------------|----------------------------|------------------|
| Ⓐ | no detergent | | |
| Ⓑ | DDM | 1:10 | 1 μ l |
| Ⓒ | AA | 1:20 ($\approx 10 \mu$ M) | 1 μ l |
| Ⓓ | Triton | | 1 μ l direkt |

SNAP-25 nc : 5 μ l

Syb
(höher Konz.
Fluoreszenz aliq.) : 15 μ l

+ 28 μ l Trispuffer

+ additive (1 μ l)

+ 1 μ M Syx3

• je 5 μ l Aliquots abgenommen :

2' \rightarrow kochen

30'

60'

90'

\rightarrow nicht aufgetragen

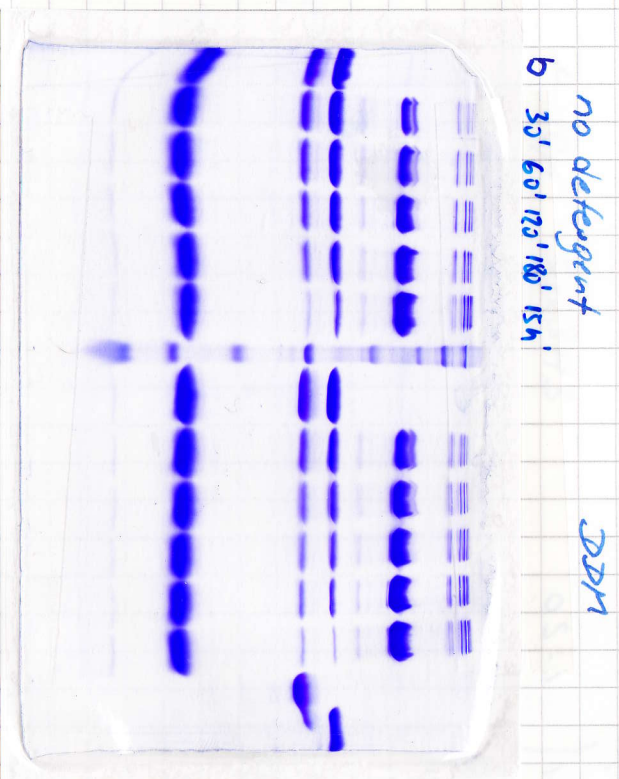
120'

180'

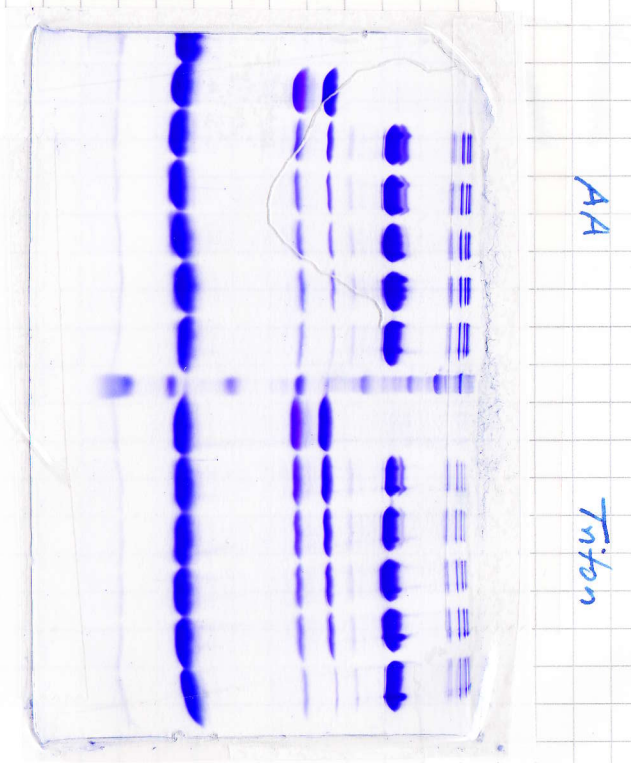
15h

Gel 1 : A BMW B SNAP25 Syx3

Gel 2 : Syb C BMW D



gel 1:9
CDB



Natingel:

1. S_gb 1 μ l
2. S_N25 2.5 μ l 1:5
3. S_gx3 2 μ l 1:20
4. S_gx3 + S_N25 2 μ l + 2 μ l
5. " " 2 μ l + 4 μ l
6. " " 2 μ l + 6 μ l
7. S_gx3 + S_N25 + S_gb 2 + 2 + 1
8. S_gx3H3 1:10 2 μ l
9. S_gx3H3 + S_N25
10. S_gx3H3 + S_N25 + S_gb

2 μ l Aliq.

1 2 3 4 5 6 7 8 9 10 A B C D

