

KOLOSNIK MATRITSA MODELINI NX1.2 DASTURI YORDAMIDA TAYYORLASH

Azizov Shuhrat Mamatovich., Uzoqov Farhod G'afforovich

Namangan muhandislik-texnologiya instituti, O'zbekiston

E-mail: azizovshuhrat@gmail.com

E-mail: farxodjonuzoqov@gmail.ru

Annotatsiya. Kolosnik matritsa modelini NX1.2 dasturi yordamida tayyorlash amalga oshirish. NX1.2 dasturida kolosnik matritsa modelini tayyorlash orqali ishlab chiqarish korxonalaridagi stanok va dasgohlarimizni o'qiydigan holatini yaratishish.

Kalit so'zlar. Kolosnik, matritsa modeli, puanson modeli, NX1.2 dasturi, post proses, fanuc, Cad Cam dasturi, 1D50R5, Operation Navigator-Geometry va pobeditli frezlar.

ПОДГОТОВКА МАТРИЧНОЙ МОДЕЛИ КОЛОССА С ПОМОЩЬЮ ПРОГРАММЫ NX1.2

Азизов Шухрат Маматович, Узоков Фарход Гафорович

Наманганский инженерно-технологический институт, Узбекистан

Аннотация. Подготовка матричной модели Колосника с помощью программы NX1.2. Подготовив колоссальную матричную модель в программе NX1.2, создав читаемое состояние наших станков и станков на производственных предприятиях.

Ключевые слова. Колосник, матрица модель, модель пойнсона, программа NX1.2, постпроцессы, fanuc, программа Cad Cam, 1D50R5, Operation Navigator-Geometry и победит фрезерные станки.

PREPARATION OF THE COLOSSIAN MATRIX MODEL USING THE NX1.2 PROGRAM

Azizov Shuxrat Mamatovich, Uzokov Farhod Gaforovich

Namangan Institute of Engineering and Technology, Uzbekistan

Abstract. Preparation of the Kolosnik matrix model using the NX1.2 program. By preparing the colossal matrix model in the NX1.2 program, creating a readable state of our machine tools and machines in production enterprises.

Keywords. Kolosnik, matrix model, poinson model, NX1.2 software, post processes, fanuc, Cad Cam software, 1D50R5, Operation Navigator-Geometry and pobedit milling machines.

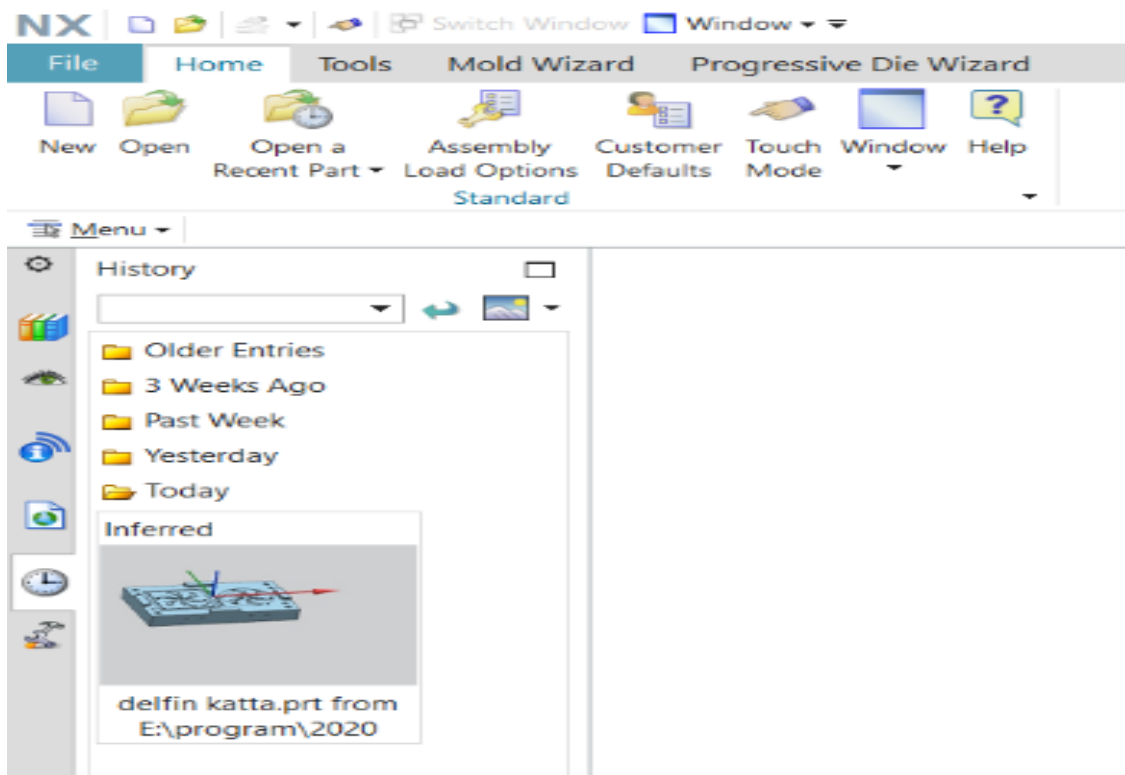
Kirish. Xozirgi kunda paxta tozalash korxonalarida ishlab chiqarilayotgan paxta tolasining sifati bevosita texnologik jarayonda ishlayotgan mashinalarning samarali ishlashiga bogliq[1-2]. Xar bir texnologik jarayon sifatli tola ishlab chikarish uchun u yoki bu darajada muxim ahamiyat kasb etadi. Korxonada tola ishlab chikarishga asosiy bogliq jarayon - bu jinlash (toladan chigitni ajratish) jarayonidir. Tozalash tsexlarida mayda va yirik iflosliklardan tozalangan paxtani jinlash tsexining asosiy mashinasi bo'lgan arrali jinga uzatiladi. Jinning ishchi kamerasiga kelib tushgan chigitli paxtaning chigit taroqi yonida aylanayotgan arra tishlari bilan ilib olib, kolosnikli panjaraga olib keladi[3-4]. Ishchi kamerada arra tishlariga ilashgan paxta bo'lakchalari boshqa paxta bo'lakchalariga ilashib, ularni xam tortadi va xomashyo valigini xosil kiladi. Bu xomashyo valigi arrali tsilindrni aylanishiga karshi tomonga aylanadi va u arra tishlarini paxta tolasini bilan uzluksiz ta'minlab turadi[5]. Maqola mualliflari tomonidan jin mashinasi ishchi elementlarini takomillashtirgan xolda bir kancha tadqiqotlar o'tkazildi. Tadqiqotlardan maqsad, kolosnik matritsa modelini NX1.2 dasturi yordamida tayyorlash.

Raqamliga aylantirish orqali ishlab chiqarish korxonalaridagi stanok va dasgohlarimizni o'qiydigan imkoniyatini yaratib berish va shu jarayonni amalga oshiradigan kurilma tayyorlab, uning samarali ishlaydigan texnologik o'lchamlarini aniqlash xamda ishlab chiqarishga joriy etishdan iborat[6-7].

Optimallashtirishda asosiy masala jin mashinasi ish unumdorligiga ta'sir qiluvchi ahamiyatli omillarni aniqlab olishdir, bunda jin mashinasining asosiy ishchi qismlaridan biri bo'lgan "kolosnik" ga ishlov berish orqali toladan ajralgan chigitlarni ishchi kameradan chikib ketish vaqtini tezlatish imkonini beruvchi parametrlar tanlab olinadi[8-9]. Har qanday buyum narsa, extiyot qismlar va hokazo barchasini ishlabchikarish uchun birinchi uni qayerga ishlatilishiga qarab yaratish kerak. Buning uchun uni modelini tayyorlash kerak. Songra uni turli maqsadlarda qollash uchun seriyalab ishlab chikarish mumkin. Kolosnik matritsa modelini NX1.2 dasturi yordamida tayyorlash uchun, avvalo kolosnikni 3d modelini tayyorlash kerak buning uchun biz NX1.2 dasturidan foydalanamiz. Kompyuterimizning ish oynasidan NX1.2 dasturiga kiramiz(rasm-1). NX1.2 dasturiga Windows ishchi stolidan kiriladi[10-11].

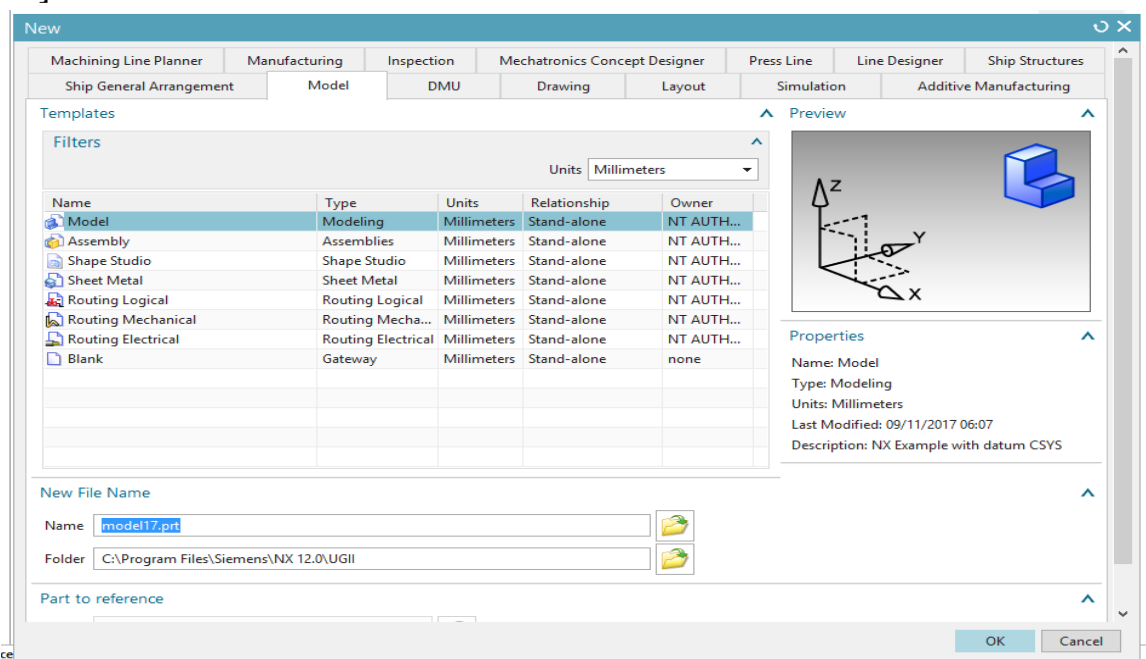


Shundan so'ng NX1.2 dasturi ish oynasi ochiladi(2-rasm).



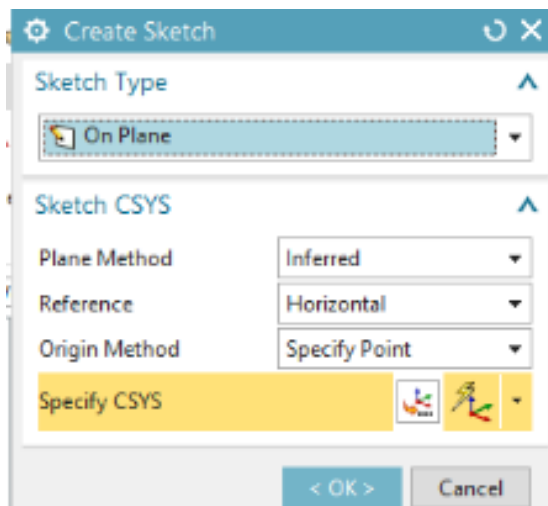
Rasm-2: NX1.2 dasturi oynasi. Inferred bo‘limi.

Bu oynadan New bo‘limiga kirib yangi modelni yaratib olamiz(3-rasm). So‘ng ishni boshlashdan oldin faylga nom berib *.prt fayl kengaytmasi bilan saqlab olamiz[12-13].

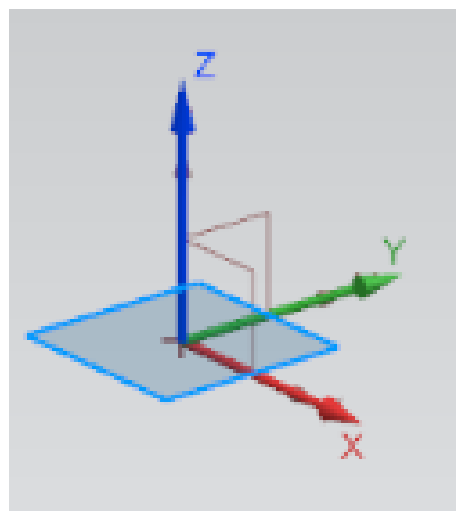


Rasm-3: New bo‘limi(Ctrl+N).

Create Scetch nostroykasidan tipini tanlaymiz, yani On Plane bo‘limini(4-rasm). Sketch yordamida X,Y va Z tekisliklardan keraklisini tanlab olamiz(5-rasm).

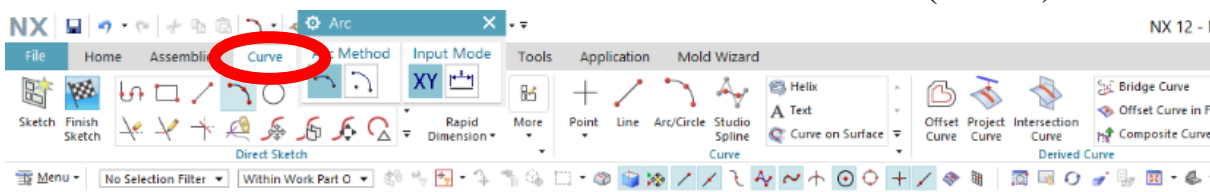


Rasm-4: On Plane bo‘limi.



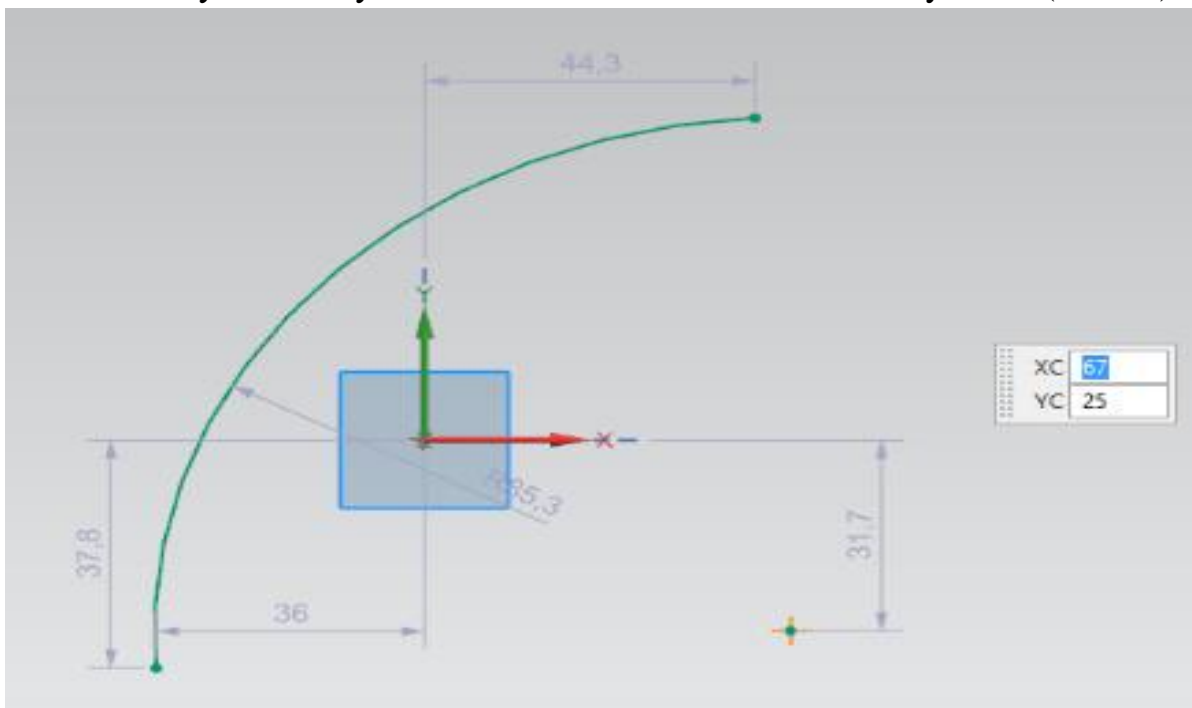
Rasm-5: X,Y va Z tekisliklar.

“Curve” ni bosib 2 o‘lchamli kolosnik modelini chizib olamiz(6-rasm).



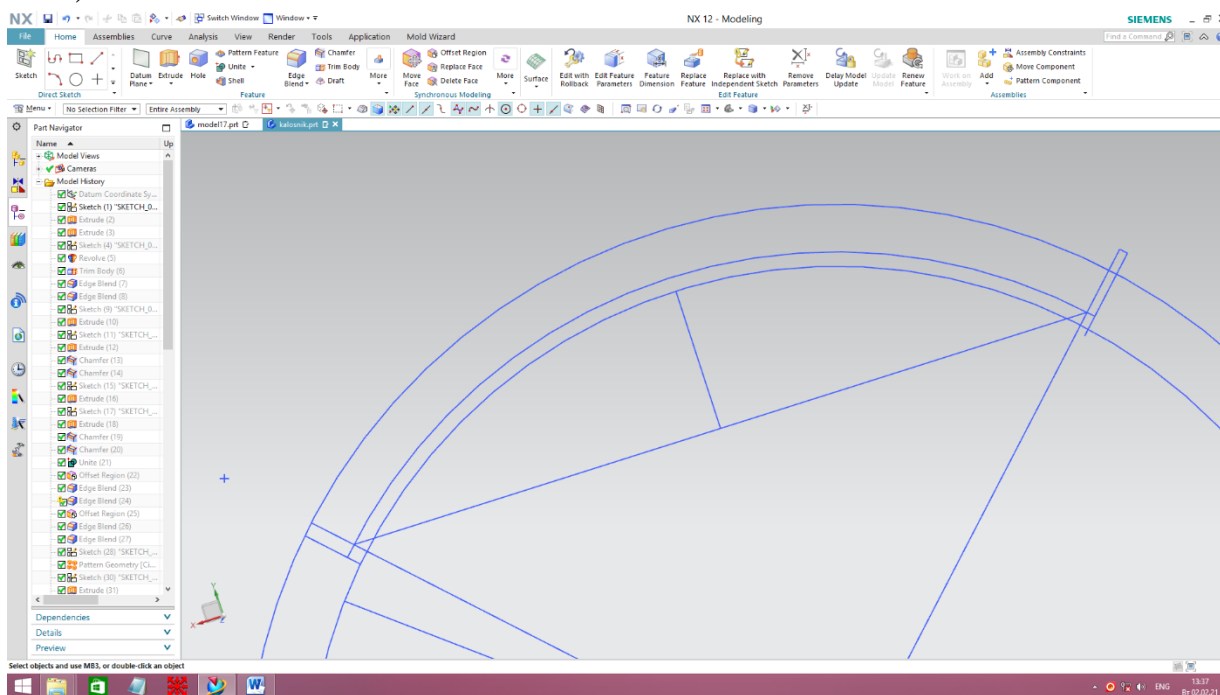
Rasm-6: “Curve” menyusi

“Curve” menyusidan foydalanib 2 o‘lchamli kolosnik modeli yaratish(7-rasm).



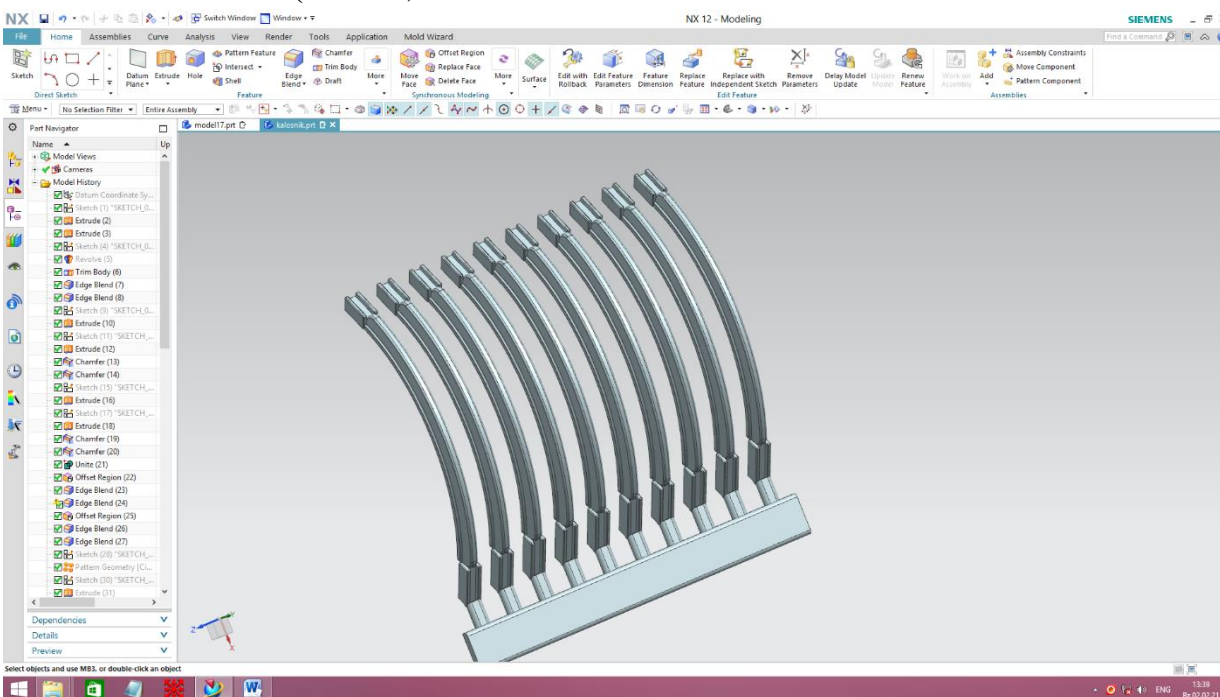
Rasm-7: “Curve” 2 o‘lchamli kolosnik modeli.

Undan so'ng "extrude" yordamida uni 3 o'lchamli holatga o'tkazamiz va qirralriga "faska" qilamiz. "patten geometriy" yordamida uni ko'paytiramiz(8-rasm).



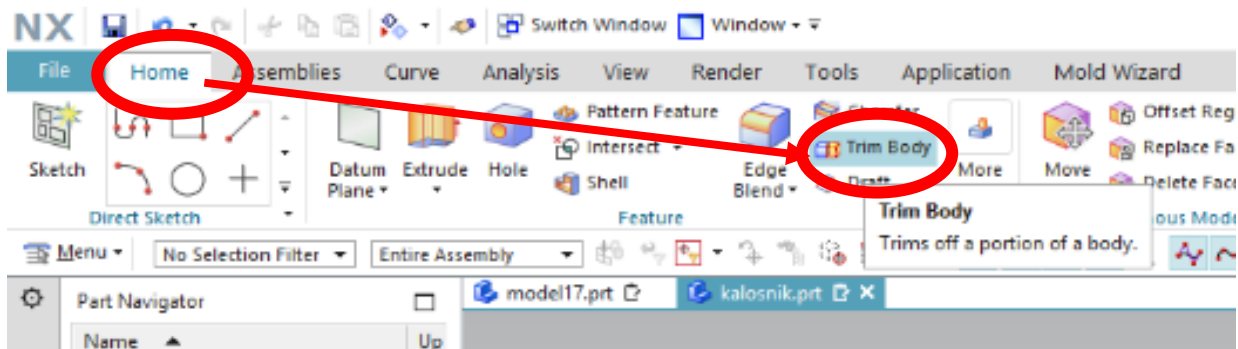
Rasm-8: "patten geometriy" yordamida chizmani ko'paytirish.

So'ngra uni ishlab chiqarishga moslashtirish uchun matritsa va punasonga ajratamiz. Chunki matritsa va punason birlashganda bizga kerakli bo'lgan model hosil bo'lishi kerak(9-rasm).



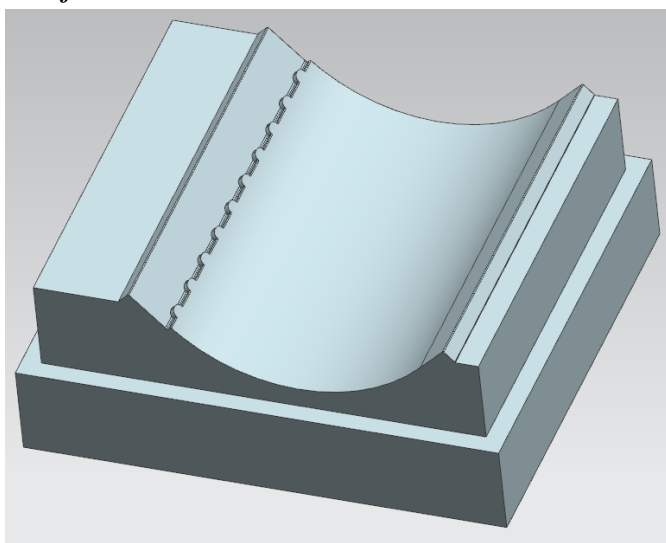
Rasm-9: Kolosnik modeli.

Matritsa va puansonga ajratish uchun biz “Trim Body” dan foydalanamiz(10-rasm).



Rasm-10: Trim Body.

Natijada NX1.2 dasturida kolosnik matritsa modelini tayyorlanadi(11-rasm).



Rasm-11: Kolosnik matritsa modeli.

Biz kolosnikni quyma usulda olishni rejalashtirganimiz uchun model yani panson va matritsa shunga moslanadi. Yuqoridagi 11 rasmda matritsa modeli hosil qilingan 3d holati.

Xulosa:

Kolosnik matritsa modelini NX1.2 dasturi yordamida tayyorlab uni ishlab chiqarish korxonalarida amalda qo'llash. Korxonadagi insonlarning qo'l mexnatini yengillashtirish.

REFERENCES

- [1] Wang, G.H. and Li, Y.X. (2022) Development of New Ductile Iron with Super-High Thermal Conductivity and Elongation. *Journal of Iron and Steel Research International*, **29**, 462-473. <https://doi.org/10.1007/s42243-021-00581-7>
- [2] Hassan, M. (2017) Characterization of Face Sheet/Core Debonding Strength in Sandwiched Medium Density Fiberboard. *Materials Sciences and Applications*, **8**, 673-684. <https://doi.org/10.4236/msa.2017.89048>
- [3] Ning, B., Wu, H.B., Niu, G., *et al.* (2022) Cold Compression Deformation Method for reducing Residual Stress and Uniformizing Micro-Property in Ferrite Steel. *Journal of Iron and Steel Research International*, **29**, 503-511. <https://doi.org/10.1007/s42243-021-00563-9>
- [4] Azizov, S.M. and Axmedhodjaev, X.T. (2016) The Optimal Modeling of an Angular Position of Saw Cylinders in Single-Chamber Two Cylinders Gin. *American Journal of Mechanical and Industrial Engineering*, **1**, 103-106. <https://doi:10.11648/j.ajmie.20160103.2>
- [5] Wang, Y.D., Zhang, L.F., Yang, W., *et al.* (2022) Effect of Nozzle Type on Fluid Flow, Solidification, and Solute Transport in Mold with Mold Electromagnetic Stirring. *Journal of Iron and Steel Research International*, **29**, 237-246. <https://doi.org/10.1007/s42243-021-00577-3>
- [6] Azizov, S.M. and Axmedhodjaev, H. (2015) Theoretical Analysis of Gin Cylinder for Simulating Dual Saw Cylinder Chamber Gin for Increasing Wear Proof, Energy Efficient, Saving Resources. *World Journal of Engineering and Technology*, **3**, 91-99.
- [7] Azizov, S., Ibrohimov, M., Uzoqov, F. and Mirzakarimov, M. (2021) The Modelling and Introductions of New Type Ribs of Lattice of the Two Cylinder of Gin. *E3S Web of Conferences*, **273**, Article ID: 07020. <https://doi.org/10.1051/e3sconf/202127307020>
- [8] Jiang, D.B., Zhang, L.F. and Wang, Y.D. (2022) Effect of Mold Electromagnetic Stirring on Solidification Structure and Solute Segregation in Continuous Casting Bloom. *Journal of Iron and Steel Research International*, **29**, 124-131. <https://doi.org/10.1007/s42243-021-00702-2>
- [9] Briseno, J. and Casanova-del-Angel, F. (2021) Fracture Mechanics on Aluminum

Specimens. *World Journal of Mechanics*, **11**, 237-257.
<https://doi.org/10.4236/wjm.2021.1112016>

[10] Mamatovich, A.S. and Abdusamat, K. (2011) Definition of Increasing the Fibre Capturing Surface of Saw Teeth of Cotton Ginning Machine through Mathematic Modelling. *World Journal of Mechanics*, **1**, 122-126.
<https://doi.org/10.4236/wjm.2011.13017>

[11] Azizov, S., Uzoqov, F., Mirzakarimov, M. and Usmanov, O. (2021) Analysis of Namangan 77 Cotton in Production Line with Different Saw Gins for Short Fiber Yield. *E3S Web of Conferences*, **273**, Article ID: 07021.
<https://doi.org/10.4236/wjm.2011.13017>

[12] Azizov, S.M. (2022) Calculation Energy of Efficiency New Ginning Machine. *Journal: Engineering*, **14**, 163-172. <https://doi.org/10.4236/eng.2022.144016>

[13] Mamatovich, A.S., Abdusamat, K. and Arras, P. (2013) The Mathematical Simulation of Brush Drums in a Dual Saw Cylinder Chamber Gin for the Purpose of Increasing the Quantity of Captured Cotton Fiber from Saw. *World Journal of Mechanics*, **3**, 58-61. <https://doi.org/10.4236/wjm.2013.31004>