

INTERNET2

2022
TECHNOLOGY
exchange

PLATINUM SPONSORS



GOLD SPONSORS



SILVER SPONSORS



How Can We Advance the RCD Profession?

Dana Brunson <dbrunson@internet2.edu>

Timothy Middelkoop <tmiddelkoop@internet2.edu>

Lauren Michael <lmichael@internet2.edu>

Research Computing and Data (RCD)

What does Research Computing and Data Mean to You?

How many here are familiar with the term RCD Professional or CI Professional?

Who in the room works in/with IT?

Who in the room is a researcher?

Who in the room has worked directly with researchers?

Who in the room considers themselves an RCD Professional?

Who in the room is a CIO or similar? Who is a VPR/VCR, Dean ADR?

Where does the RCD Group live? (under the CIO?, VPR/VCR etc., Other?)

Who in the room has heard of CaRCC? CASC? US-RSE? The Carpentries?

What is Research Computing and Data?

Research Computing and Data* (RCD) is one of the terms, along with Cyberinfrastructure (CI) and *Research IT*, used to describe the compute, storage, networking, physical systems, software, security, support infrastructure, **and people** used to enable digital scholarship through training, services, collaboration, co-discovery, co-creation, and more!

** "Research computing and data" involves people, scholarship, and resources supporting the IT specific to research and scholarship leveraging compute, data, networking, and software, broadly defined, including the professionals who execute and support these efforts. Whereas entities supporting research computing and data historically emerged from operating and supporting high performance computing, the needs, capabilities and technologies have sufficiently broadened the scope of research information technology to include virtualization, support for the cloud, containers, middleware, workflows, data management, data movement, compliance and security, user training, support of instruction using advanced research computing and data, on-boarding into new technologies, and deep engagement ("facilitation") to help guide researchers. <https://carcc.org/about/>*



Why is RCD important?

- **Research and scholarship is now reliant on technology** across most (if not all) disciplines.
- Research is more frequently conducted by **widely dispersed communities** that are sharing **larger, more complex data sets** and using **more sophisticated tools**.
- **A rapidly increasing level knowledge and skill is required** to make effective use of research computing and data infrastructure, services, support.
- For research that relies on technology, **support from a highly skilled workforce is now required.**
- **This workforce is an emerging profession:** The Research Computing and Data (RCD) professional community.

Without a strong RCD workforce, research stalls.

Why is Advancing the RCD Profession Important?

Researchers struggle to take advantage of ever-evolving RCD technology

- They have no time to become technology experts
- They rely heavily on RCD professionals for tech services, support and facilitation.

Institutions need support and guidance

- To boot-strap, grow, and sustain their programs
- To explain to leadership how RCD is critical to research
- To recruit, retain, and develop RCD professional staff

RCD professionals are clamoring for a shared voice

- To advocate for the profession
- For broader understanding of their roles
- For training, mentoring, and professional development resources.

Who is an RCD Professional?

Live in the uncanny valley between “staff” and “academic” camps.

Often (but not always) will work in a “Research IT” group.

Associated with the terms co-discovery and co-creation.

Wears many hats. In addition to “researcher,” “librarian,” and “IT Staff” we have many facings

- Systems Facing (HPC Sysadmin)
- Researcher Facing (Facilitator)
- Software Facing (including Research Software Engineers - <https://us-rse.org>)
- Data Facing (includes many in the Libraries)
- Policy and Strategy Facing (RCD Director)

CaRCC

Advancing the Profession – CaRCC

The Campus Research Computing Consortium (<https://carcc.org>) has emerged as the recognized community and resource for the emerging profession.

Supported by individual volunteers, grants (NSF RCN award OAC-1620695, NSF CI CoE pilot award NSF-2100003 and others), in kind contributions, and organizations including Internet2.



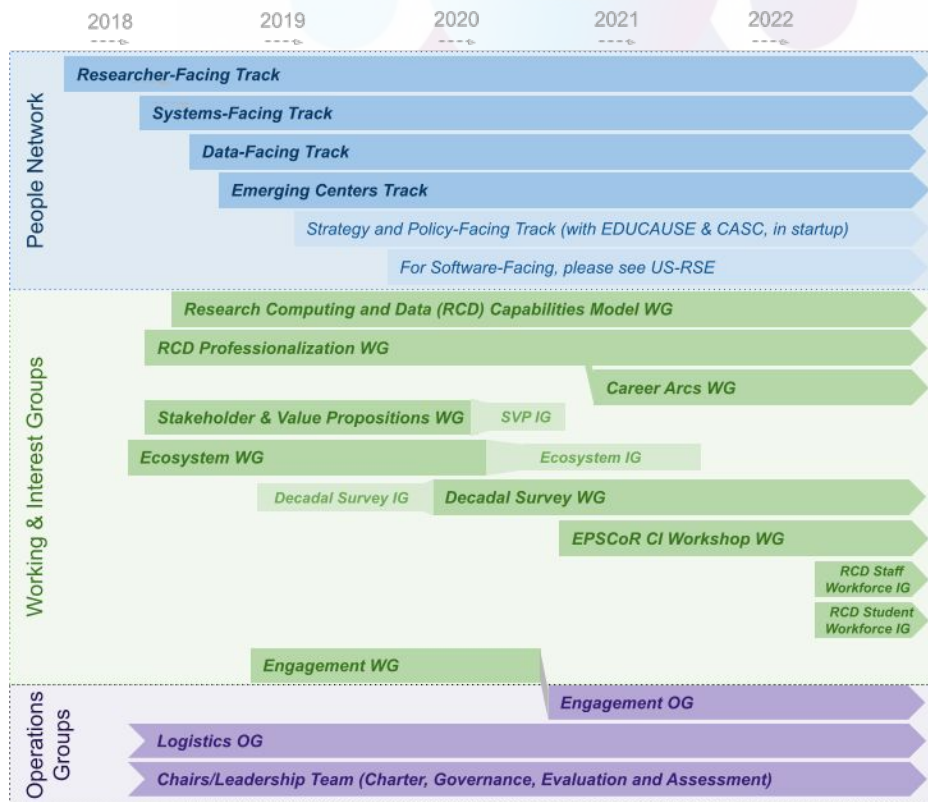
Campus Research Computing Consortium

An organization of dedicated professionals developing, advocating for, and advancing campus **research computing and data (RCD)** and associated professions, including **career development and visibility**, and the ability of RCD professionals to **deliver services & resources for researchers**.

People Network - Year-round virtual conference, with affinity-based tracks, email lists, and community-decided monthly call topics (recorded to YouTube).

Working and Interest Groups - activities that connect RCD professionals & organizations around objectives and topics that advance the campus RCD and the profession

Operational Groups - ensure operational success by coordinating across the network and other groups, and executing project administration



CaRCC Activities and Relative Timeline

Who is CaRCC?



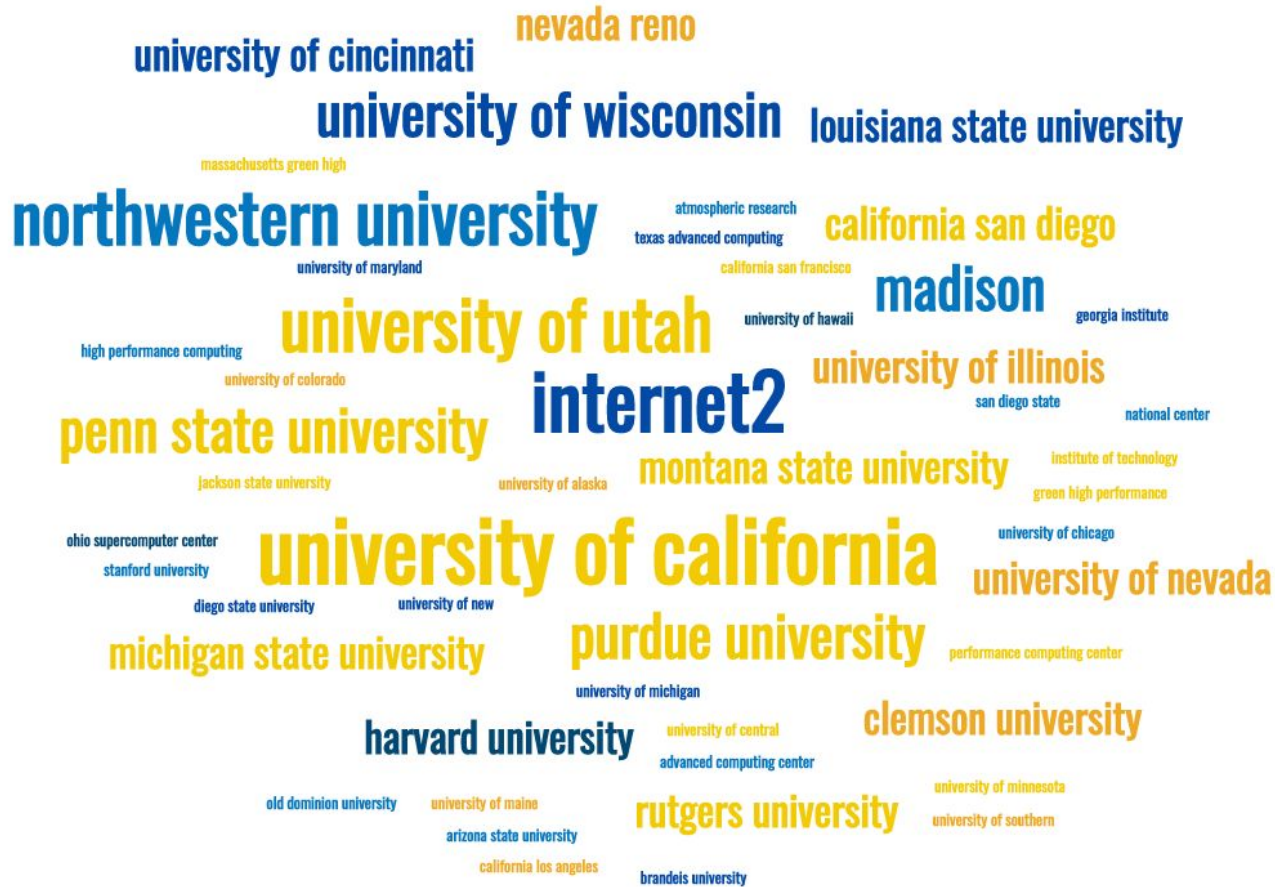
Many contributors

Jay Alameda, University of Illinois at Urbana-Champaign
Troy Baer, Ohio Supercomputer Center
Gladys Karina Andino Bautista, Purdue University
Venice Bayrd, Montana State University
John Blaas, National Center for Atmospheric Research
Justin Booth, Michigan State University
Tara Borland, University of Alaska
Jim Bottum, Clemson University
Geoff Boushey, University of California San Francisco
Carrie Brown, Penn State University
Dana Brunson, Internet2
Katia Bulekova, Boston University
Cyd Burrows-Schilling, University of California San Diego
Zach Byerly, Louisiana State University
Laura Carriere, NASA
Sarvani Chadalapaka, University of California Merced
Dhruva Chakravorty, Texas A&M
Cathy Chaplin, Internet2
Shafaq Chaudhry, University of Central Florida
Thomas Cheatham, University of Utah
Dirk Colbry, Michigan State University
Galen Collier, Rutgers University
Jane Combs, University of Cincinnati
Martin Cuma, University of Utah
Deborah Dent, Jackson State University
F. Alex Feltus, Clemson University
Bob Freeman, Harvard University

Joel Cutcher-Gershenfeld, Brandeis University
Kimberley Grash, University of Chicago
Fred Harris, University of Nevada Reno
Brian Haymore, University of Utah
John Hicks, Internet2
Betsy Hillery, Purdue University
Gwen Jacobs, University of Hawaii
Douglas Jennewein, Arizona State University
Kerk Kee, Texas Tech
Rich Knepper, Cornell University
Shelley Knuth, University of Colorado Boulder
Christina Koch, University of Wisconsin - Madison
Amy Koshoffer, University of Cincinnati
Gail Krovitz, Internet2
Elizabeth Leake, STEM TREK
Jim Leous, Penn State University
Julie Ma, MGHPC
Tobin Magle, Northwestern University
Christina Maimone, Northwestern University
Sara Mannheimer, Montana State University
Ruth Marinshaw, Stanford University
Deb McCaffrey, University of Michigan
Lauren Michael, University of Wisconsin - Madison
Bill Michener, University of New Mexico
Timothy Middelkoop, Internet2
Claire Mizumoto, University of California San Diego
Amy Neeser, University of California Berkeley

Janna Nugent, Northwestern University
Barr von Oehsen, Rutgers University
Arman Pazouki, Northwestern University
Sai Pinnepalli, Louisiana State University
Sam Porter, University of Maryland
Wirawan Purwanto, Old Dominion University
Annelie Rugg, University of California Los Angeles
Patrick Schmitt, Semper Cogito
Erin Shaw, University of Southern California
Jerry Sheehan, San Diego State University
Andy Sherman, Yale University
Kurt Showmaker, Jacksons Labs
Alan Silver, University of Wisconsin - Madison
Preston Smith, Purdue University
Tracy Smith, University of Illinois
Dan Stanzione, Texas Advanced Computing Center
Ashley Stauffer, Penn State University
Scotty Strachan, University of Nevada Reno
John Towns, NCSA
Pips Veazey, University of Maine
Jason Wells, Bentley University
Karen Wetzel, EDUCAUSE
Jim Wilgenbusch, University of Minnesota
Scott Yockel, Harvard University
Nuyun Zhang, Georgia Institute of Technology
Anita Orendt, University of Utah

... from many institutions



CaRCC's People Network

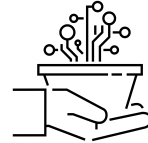
= *Inclusive Community*

An ongoing "remote conference" to share/leverage expertise in various facings (Tracks)



Data-Facing:

Analysis, curation, preservation, compliance, movement



Emerging-Centers:

Newer or emerging RCD service leaders & programs



Researcher-Facing:

Consulting, bridging, facilitation, outreach, training



Systems-Facing:

Hardware, networks, security, compliance, data centers



Software-Facing:

Develop or contribute to research software, scripts, workflows



Strategy/Policy-Facing:

Institutional alignment, culture, funding, policy, community

Co-Coordinators: *Lauren Michael, UW-Madison*
Bob Freeman, Harvard Business School

RCD Professionalization Timeline



RCN Meetings



RC Directors and Organizational Sociologist deliberate on the "CI Profession"

CI Professionalization Workshop



30 Institutions gathered to create the Job Elements and Career Guide, validating the "-facings" concept, outlining their roles/responsibilities.

RCD Workforce Survey



8 professionals met over 5 months and crafted a national survey, which created the first large data set on the composition of the RCD workforce, a resource useful for individuals & hiring managers.

RCD Workforce & Career Arcs Publications



2016

2017

2018

2019

2020

2021

2022

Facings term introduced



To describe "who" the CI professionals are, we described what entity the staff faced on a regular basis: researchers, systems, software, data, strategy & policy)

HR Job Family Matrix



6 RCD & 2 HR professionals met over 6 weeks and create a HR framework template with a unique RCD job family to be used by any institution.

Career Arcs



15 professionals created RCD Career Arcs survey

Career Arcs interviews launched

Challenges for the RCD Profession

- Individuals do not understand RCD *as a career*
 - No formal career path structure
 - Little awareness of career potential
- RCD groups struggle to recruit and retain staff
 - Where to find people?
 - How to train and develop them?
 - How to ensure RCD profession matches broader workforce diversity?
 - How to compensate and promote them?
- Occupational distinction from
 - IT (i.e. Administrative/Enterprise IT)
 - Researchers in other disciplines



Staff & Student Professional Development

Building on the good work already happening, addressing current need, and looking to the future

- Supporting current RCD Professionals
- For Students and About Students
- For Institutions



Staff & Student Professional Development

Building on the good work already happening, addressing current need, and looking to the future

- Supporting RCD Professionals
 - Those doing the job now who need support
 - Building on the community developed in CaRCC and elsewhere
 - Wanting career development
 - And, those who want to become an RCD professional
- Under the CaRCC framework
 - Staff Workforce Development Interest Group
 - Student Workforce Development Interest Group
 - Future
 - Workgroups grown out of the Interest Groups discussions

CaRCC Advisory Committee

Thanks to our new AC members for their support of CaRCC!!

Amy Neeser (UC Berkeley)

Ann Kovalchick (UC Merced)

Dan Stanzione (TACC/UT Austin)

Erik Lundberg (U Washington)

Jackie Milhans* (Northwestern)

Linda Akli (SURA/XSEDE)

Ana Hunsinger (Internet2)

Ashley Stauffer (Penn State University)

Danielle Cooper (Ithaka S&R)

Henry Neeman (University of Oklahoma)

Jim Bottum*

Susan Mehringer (Cornell University)

**co-chairs*

Other Acknowledgements:

Portions of this material are based upon work supported by the National Science Foundation under the following grants:

Grant No. OAC-1440783, “A Model for Advanced Cyberinfrastructure Research and Education Facilitators”

Grant No. OAC-1548562, “XSEDE 2.0: Integrating, Enabling and Enhancing National Cyberinfrastructure with Expanding Community Involvement”

Grant No. OAC-1620695, “RCN: Advancing Research and Education Through a National Network of Campus Cyberinfrastructure, Infrastructures – The CaRC Consortium”

Grant No. OAC-2036534, “Building the research innovation workforce: a workshop to identify new insights and directions to advance the research computing community.”

Grant No. OIA-2033483, “Building Research Cyberinfrastructure in EPSCoR Jurisdictions: Assessment, Planning and Partnerships”

Grant No. OAC-2100003, “CI CoE: Demo Pilot: Advancing Research Computing and Data: Strategic Tools, Practices, and Professional Development”

RCD Nexus

RCD Nexus - CaRCC's Resource and Career Center

An NSF-supported CI Center of Excellence Pilot



Dana Brunson, PI - Internet2 - Executive Director for Research Engagement

Scott Yockel, co-PI - Harvard - University Research Computing Officer

Claire Mizumoto, co-PI - UC San Diego - Director, Research IT Services

Thomas Cheatham co-PI - University of Utah - Professor of Pharmacy & Director of RC/CHPC

Patrick Schmitz, co-PI - Semper Cogito

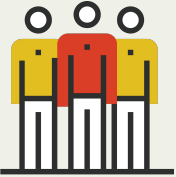


How the RCD Nexus Addresses the Needs

- RCD Nexus advances and enables the nation's capacity for computational and data-intensive research
- Creating tools, practices, and professional development resources:
 - Enhanced RCD Capabilities Model and Community Dataset Portal
 - An RCD Workforce Staffing survey
 - Advance the adoption of RCD Job Family Framework
 - Curate leading practices for Staff Professional Development
 - Curate leading practices for Involving Students in RCD/Workforce Development
- Gathering these into an RCD Resource and Career Center
- Helping bridge the gap for smaller institutions struggling to get RCD programs started to support their researchers.

Internet2 Supports Research





Research
Engagement
at Internet2

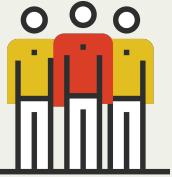


Research Engagement at Internet2

Research Engagement at Internet2 works to enhance global research computing and data capability (RCD), capacity, and resources to better support and advance research activity.

We do this by providing consulting and training, facilitating a professional community to develop tools and best practices, and supporting RCD professionals as research partners.

<https://internet2.edu/research-engagement>



Research
Engagement
at Internet2

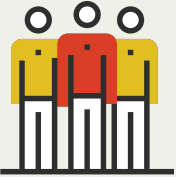


Internet2 Supports Research

Researchers struggle to take advantage of ever-evolving RCD technology. They have no time to become technology experts and rely heavily on RCD professionals for tech services, support and facilitation.

Institutions need support and guidance to boot-strap, grow, and sustain their programs; to explain to leadership how RCD is critical to research; and to recruit, retain, and develop RCD professional staff.

RCD professionals are clamoring for a shared voice to advocate for the profession; for broader understanding of their roles; and for training, mentoring, and professional development resources.



Research
Engagement
at Internet2



Internet2 Supports Research

Internet2 supports research by supporting the community of research projects and such as:

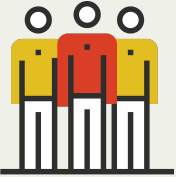
Open Science Grid (OSG) Open Science Data Federation (OSDF) utilizes storage caches directly connected to the Internet2 backbone and backbone network/routing support,

FABRIC is an **adaptive programmable research infrastructure** that allows access to public cloud services provided by Internet2,

ERN (Ecosystem for Research Networking) and the **Broadening The Reach (BTR)** effort is supported by Internet2 and engages with smaller, under-resourced institutions to identify and support research and education activities,

SC/SCinet Internet2 has supported SCinet for over 20 years and **Matt Zekauskas is the 2022 SCinet Chair.**





Research
Engagement
at Internet2



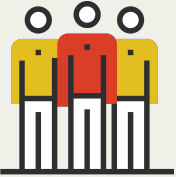
Internet2 Supports Research Computing and Data Professionals

Research Computing and Data (RCD) professionals accelerate research and we help support many of the organizations that RCD professionals care about.

We do this through grant leadership, ongoing contributions, and infrastructure support to name a few.

<https://internet2.edu/research-engagement>





**Research
Engagement
at Internet2**



Internet2 Supports CaRCC and the RCD Nexus, an NSF CI CoE Pilot

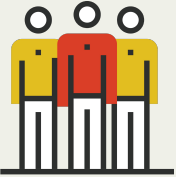
CaRCC is an organization of dedicated professionals developing, advocating for, and advancing campus research computing and data (RCD) and associated professions, including career development and visibility, and the ability of RCD professionals to deliver services & resources for researchers.

<https://carcc.org>



RCD Nexus is
supported by the
National Science
Foundation
under Grant
OAC-210003





Research
Engagement
at Internet2



Internet2 Supports the RCD Capabilities Model

The **Research Computing and Data (RCD) Capabilities Model** is a self-assessment tool designed to be useful to campus leadership, campus research computing and data practitioners, and researchers to assess support for computationally and data intensive research.

It can be used to **benchmark** and to identify and understand areas of strength and weakness in an institution's support when conducting **strategic planning and prioritization** exercises.

<https://rcd-nexus.org/rcdcm>



RCD Nexus is
supported by the
National Science
Foundation
under Grant
OAC-2100003



The RCD+ Ecosystem



<p>Academic Data Science Alliance</p> <p>WEBSITE: https://academicdatascience.org/</p> <p>COMMUNITY: Data Science</p> <p>TAGS: community</p> <p>ASSOCIATION: ADSA</p>	<p>Ask CyberInfrastructure</p> <p>WEBSITE: https://ask-ci.org/</p> <p>COMMUNITY: Researcher Facing Systems FA</p> <p>TAGS: DS DS&S DS&S</p> <p>ASSOCIATION: AICI</p>	<p>Association of Research Libraries</p> <p>WEBSITE: https://www.arl.org/</p> <p>COMMUNITY: Library</p> <p>TAGS: Library DS&S</p> <p>ASSOCIATION: ARL</p>	<p>Campus Champions</p> <p>WEBSITE: https://campuschampions.org/</p> <p>COMMUNITY: ACD Professional</p> <p>TAGS: ACD Professional</p> <p>ASSOCIATION: CACC</p>	<p>CaRCCC</p> <p>WEBSITE: https://carccc.org/</p> <p>COMMUNITY: ACD Professional</p> <p>TAGS: DS&S community DS&S DS&S</p> <p>ASSOCIATION: CaRCC</p>	<p>CASC</p> <p>WEBSITE: https://casc.org/</p> <p>COMMUNITY: Systems FA Library</p> <p>TAGS: Systems FA Library</p> <p>ASSOCIATION: CASC</p>	<p>cni</p> <p>WEBSITE: https://www.cni.org/</p> <p>COMMUNITY: Library</p> <p>TAGS: Library</p> <p>ASSOCIATION: CNI</p>	<p>Computational Science / Humanities</p> <p>WEBSITE: https://chutor.org/~weeder/...</p> <p>COMMUNITY: Researcher Facing</p> <p>TAGS: DS&S DS&S calendar</p> <p>ASSOCIATION: CyberAmbassadors</p>	<p>CyberAmbassadors</p> <p>WEBSITE: https://cyberai.github.io/cyber...</p> <p>COMMUNITY: Researcher Facing</p> <p>TAGS: ACD Training</p> <p>ASSOCIATION: CyberAmbassadors</p>	<p>Ecosystem for Research Networking</p> <p>WEBSITE: https://www.enrp.org/</p> <p>COMMUNITY: ACD Professional</p> <p>TAGS: Regional</p> <p>ASSOCIATION: ENR</p>	<p>EDUCAUSE</p> <p>WEBSITE: https://www.educause.edu/</p> <p>COMMUNITY: Cloud</p> <p>TAGS: DS&S</p> <p>ASSOCIATION: EDUCAUSE</p>	<p>EDUCAUSE</p> <p>WEBSITE: https://www.educause.edu/cloud...</p> <p>COMMUNITY: Cloud</p> <p>TAGS: Cloud VPS</p> <p>ASSOCIATION: EDUCAUSE CCG</p>	<p>XSEDE</p> <p>WEBSITE: https://www.xsede.org/</p> <p>COMMUNITY: ACD Professional</p> <p>TAGS: ACD</p> <p>ASSOCIATION: XSEDE</p>
<p>FLR</p> <p>WEBSITE: https://www.flr.org/</p> <p>COMMUNITY: ACD Professional Networks</p> <p>TAGS: ACD Networks</p> <p>ASSOCIATION: FLR</p>	<p>GPN</p> <p>WEBSITE: https://www.greatplains.net/</p> <p>COMMUNITY: ACD Professional GPN Networks</p> <p>TAGS: ACD GPN Networks</p> <p>ASSOCIATION: GPN</p>	<p>HPC-AI Advisory Council</p> <p>WEBSITE: https://www.hpc-aiadvisorycouncil.com/</p> <p>COMMUNITY: ACD Professional</p> <p>TAGS: ACD Professional</p> <p>ASSOCIATION: HPC-AI</p>	<p>Internet2</p> <p>WEBSITE: https://internet2.edu/</p> <p>COMMUNITY: Networks community</p> <p>TAGS: Networks community</p> <p>ASSOCIATION: Internet2</p>	<p>LCI</p> <p>WEBSITE: https://linuxclustersinstitute.org/</p> <p>COMMUNITY: Systems FA</p> <p>TAGS: Systems FA</p> <p>ASSOCIATION: LCI</p>	<p>Mid-Atlantic Research Infrastructure</p> <p>WEBSITE: https://www.mariliance.net/</p> <p>COMMUNITY: Networks</p> <p>TAGS: Networks</p> <p>ASSOCIATION: MARIA</p>	<p>Midwest Research Computing</p> <p>WEBSITE: https://midwestresearchcomputing.org/</p> <p>COMMUNITY: ACD Professional</p> <p>TAGS: ACD Professional</p> <p>ASSOCIATION: MRWCD</p>	<p>Minority Serving - Cybernetics</p> <p>WEBSITE: https://www.ms-cyber.org/</p> <p>COMMUNITY: ACD Professional</p> <p>TAGS: ACD Professional</p> <p>ASSOCIATION: MS-CC</p>	<p>National Consortium for Data Science</p> <p>WEBSITE: https://data-scienceconsortium.org/</p> <p>COMMUNITY: ACD Professional</p> <p>TAGS: ACD Professional</p> <p>ASSOCIATION: NDCS</p>	<p>New York State Education Research Network</p> <p>WEBSITE: https://www.nyresnet.org/</p> <p>COMMUNITY: ACD Professional State</p> <p>TAGS: ACD Professional State</p> <p>ASSOCIATION: NYRESnet</p>	<p>OneOklahoma Cyberinfrastructure</p> <p>WEBSITE: https://www.oneocci.okstate.edu/</p> <p>COMMUNITY: ACD Professional Community</p> <p>TAGS: ACD Community</p> <p>ASSOCIATION: ONEOCCI</p>	<p>Open Researcher and Contributor</p> <p>WEBSITE: https://orcid.org/</p> <p>COMMUNITY: ACD Professional Researcher</p> <p>TAGS: ACD Professional</p> <p>ASSOCIATION: ORCID</p>	<p>Open Science Grid</p> <p>WEBSITE: https://www.opensciencegrid.org/</p> <p>COMMUNITY: ACD Professional Community</p> <p>TAGS: ACD Community</p> <p>ASSOCIATION: OSG</p>
<p>PEARC</p> <p>WEBSITE: https://www.pearc.org/</p> <p>COMMUNITY: ACD Professional Community</p> <p>TAGS: ACD Professional</p> <p>ASSOCIATION: PEARC</p>	<p>RCD Community of Communities</p> <p>WEBSITE: https://communityofcommunities.com/</p> <p>COMMUNITY: Community FA</p> <p>TAGS: Community FA</p> <p>ASSOCIATION: CoCo</p>	<p>RCD Nexus</p> <p>WEBSITE: https://nexus-rcd.org/</p> <p>COMMUNITY: ACD Professional</p> <p>TAGS: ACD Professional</p> <p>ASSOCIATION: RCDNexus</p>	<p>Regulated Research Communities</p> <p>WEBSITE: https://www.regulatedresearch.com/</p> <p>COMMUNITY: Security</p> <p>TAGS: Security</p> <p>ASSOCIATION: R2C&P</p>	<p>Research Computing and Education</p> <p>WEBSITE: https://www.educause.edu/com...</p> <p>COMMUNITY: ACD Professional Community</p> <p>TAGS: ACD Professional Community DS&S</p> <p>ASSOCIATION: EDUCAUSE RCD CO</p>	<p>Research Computing Teams</p> <p>WEBSITE: https://www.researchcomputing.org/</p> <p>COMMUNITY: Systems FA Library</p> <p>TAGS: Systems FA Library</p> <p>ASSOCIATION: RCT</p>	<p>Research Data Access & Policy</p> <p>WEBSITE: https://rdapassociation.org/</p> <p>COMMUNITY: Data FA</p> <p>TAGS: Data FA</p> <p>ASSOCIATION: RDAP</p>	<p>Research Data Alliance</p> <p>WEBSITE: https://www.rd-alliance.org/</p> <p>COMMUNITY: ACD Professional Data FA Data FA</p> <p>TAGS: ACD Professional Data FA Data FA</p> <p>ASSOCIATION: RDA</p>	<p>Research Software Alliance</p> <p>WEBSITE: https://www.researchsoft.org/</p> <p>COMMUNITY: Software FA</p> <p>TAGS: Software FA</p> <p>ASSOCIATION: RSA</p>	<p>Rocky Mountain Advanced Research Computing</p> <p>WEBSITE: https://www.rmacc.org/</p> <p>COMMUNITY: ACD Professional Community</p> <p>TAGS: ACD Professional Community</p> <p>ASSOCIATION: RMACC</p>	<p>SC Conference Series</p> <p>WEBSITE: https://www.scconfseries.org/</p> <p>COMMUNITY: Systems FA Community Data</p> <p>TAGS: Systems FA Community Data</p> <p>ASSOCIATION: SC</p>	<p>Science Gateways Community Institute</p> <p>WEBSITE: https://sciencegateways.org/</p> <p>COMMUNITY: ACD Professional Community</p> <p>TAGS: ACD Professional Community</p> <p>ASSOCIATION: SCGI</p>	<p>ShowMeCI</p> <p>WEBSITE: https://www.showme-ci.org/</p> <p>COMMUNITY: ACD Professional</p> <p>TAGS: ACD Professional</p> <p>ASSOCIATION: ShowMeCI</p>
<p>sighpc</p> <p>WEBSITE: https://www.sighpc.org/</p> <p>COMMUNITY: Community</p> <p>TAGS: Community</p> <p>ASSOCIATION: SighPC</p>	<p>sig hpc Education</p> <p>WEBSITE: https://sighpceducation.acm.org/</p> <p>COMMUNITY: sig Community</p> <p>TAGS: sig Community</p> <p>ASSOCIATION: SIGHPC</p>	<p>SIGHPC Sysops</p> <p>WEBSITE: https://sighpc-sysops.org/</p> <p>COMMUNITY: Systems FA Community</p> <p>TAGS: Systems FA Community</p> <p>ASSOCIATION: Sysops</p>	<p>Sunshine State Education Research Computing</p> <p>WEBSITE: https://www.sserca.flrnet.org/</p> <p>COMMUNITY: ACD Professional</p> <p>TAGS: ACD Professional</p> <p>ASSOCIATION: SSERCA</p>	<p>The Carpentries</p> <p>WEBSITE: https://thecarpentries.org/</p> <p>COMMUNITY: Researcher Facing Researcher</p> <p>TAGS: Researcher Facing Researcher</p> <p>ASSOCIATION: The Carpentries</p>	<p>The Future of Research Computing</p> <p>WEBSITE: https://forccf1.org/</p> <p>COMMUNITY: Data FA Library</p> <p>TAGS: Data FA Library</p> <p>ASSOCIATION: FORCE11</p>	<p>The Quilt</p> <p>WEBSITE: https://www.thequilt.net/</p> <p>COMMUNITY: Networks</p> <p>TAGS: Networks</p> <p>ASSOCIATION: QUILT</p>	<p>Trusted CI</p> <p>WEBSITE: https://www.trustedci.org/</p> <p>COMMUNITY: Security Data FA</p> <p>TAGS: Security Data FA</p> <p>ASSOCIATION: Trusted CI</p>	<p>United States Research Software</p> <p>WEBSITE: https://www.us-rse.org/</p> <p>COMMUNITY: Software FA</p> <p>TAGS: Software FA</p> <p>ASSOCIATION: US-RSE</p>	<p>University of Oklahoma Virtual Infrastructure</p> <p>WEBSITE: http://www.ou.edu/virt/infra...</p> <p>COMMUNITY: ACD Professional</p> <p>TAGS: ACD Professional</p> <p>ASSOCIATION: VIB</p>	<p>UEN</p> <p>WEBSITE: https://www.uen.org/</p> <p>COMMUNITY: Data FA Community Data Data</p> <p>TAGS: Data FA Community Data Data</p> <p>ASSOCIATION: UEN</p>	<p>WHPCC</p> <p>WEBSITE: https://www.whpc.org/</p> <p>COMMUNITY: Data FA Community Data Data</p> <p>TAGS: Data FA Community Data Data</p> <p>ASSOCIATION: WHPCC</p>	<p>Workflows Community</p> <p>WEBSITE: https://workflowscommunity.org/</p> <p>COMMUNITY: Workflow</p> <p>TAGS: Workflow</p> <p>ASSOCIATION: Workflows Community</p>

<https://spaces.at.internet2.edu/display/RE/RCD+Ecosystem>

