

Appendix S2 - Photos

A review of the glacial environment arthropod trace fossils *Umfolozia* and *Warvichnium* with the description of new ichnotaxa

Gabriel E. B. de Barros; Bernardo de C. P. e M. Peixoto; João H. D. Lima; Nicholas J. Minter; Daniel Sedorko



Figure S1. Details of *Umfolozia terere* isp. nov. sample CAP/1D-165. Scale bar of 2mm.

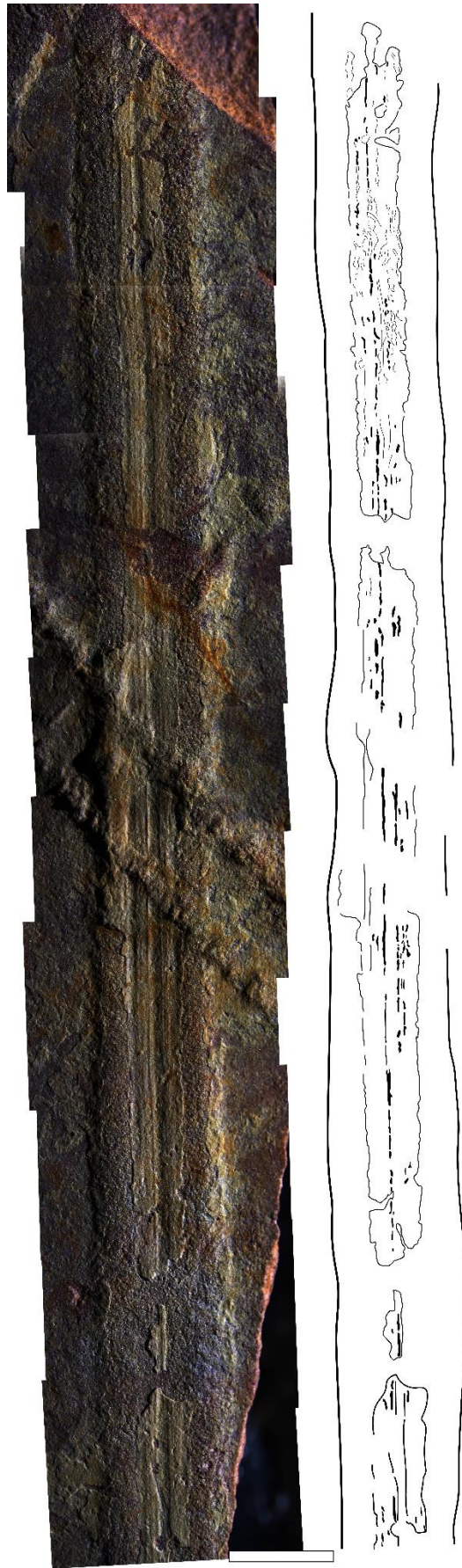


Figure S2. *Umfolozia terere* isp. nov. sample CAP/1D-28. Scale bar of 5mm.

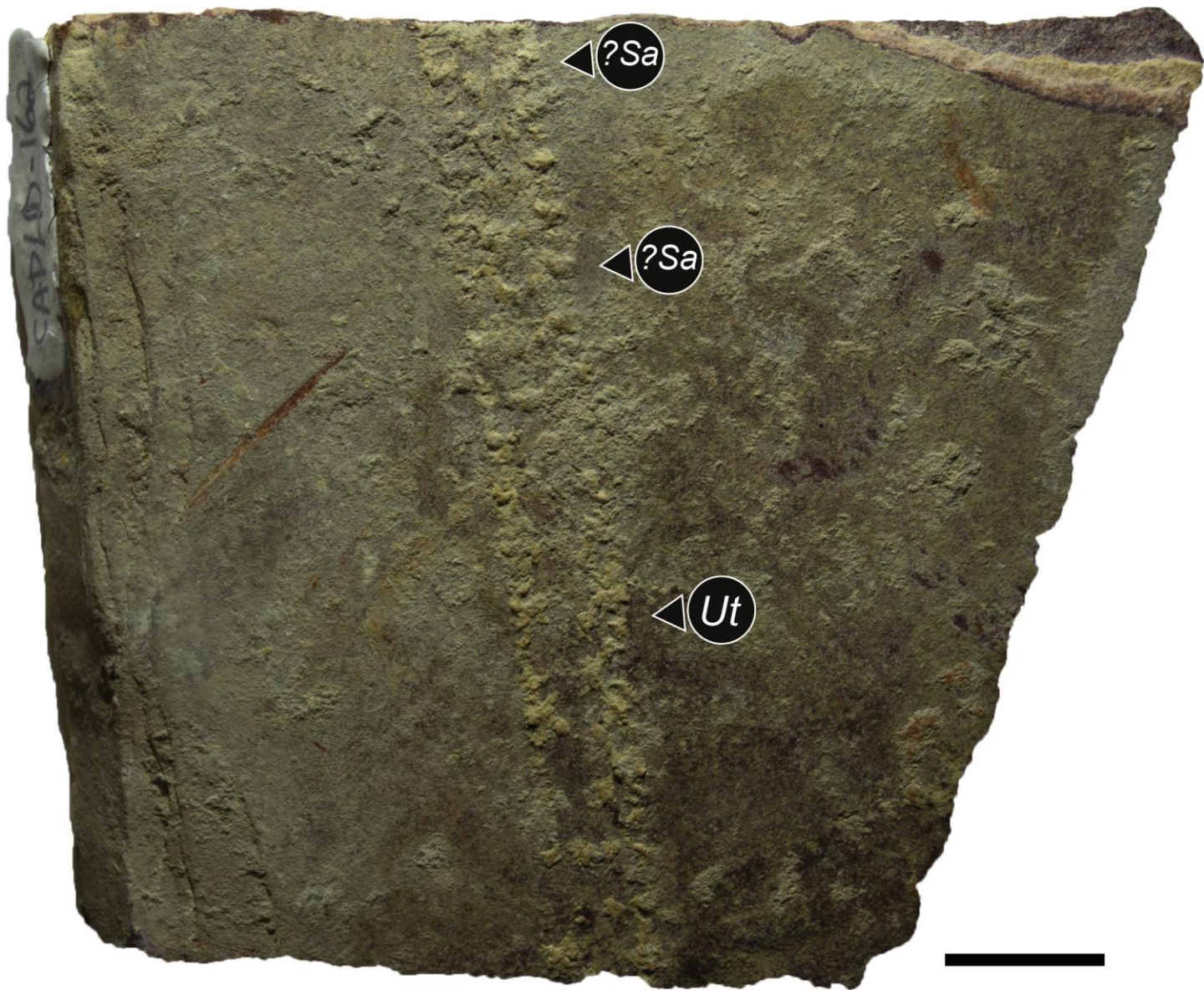


Figure S3. Sample CAP/1D-162. *Ut* = *Umfolozia terere* isp. nov.; ?*Sa* = probable transition to *Irichnus saltatorius*. Scale bar of 10mm.

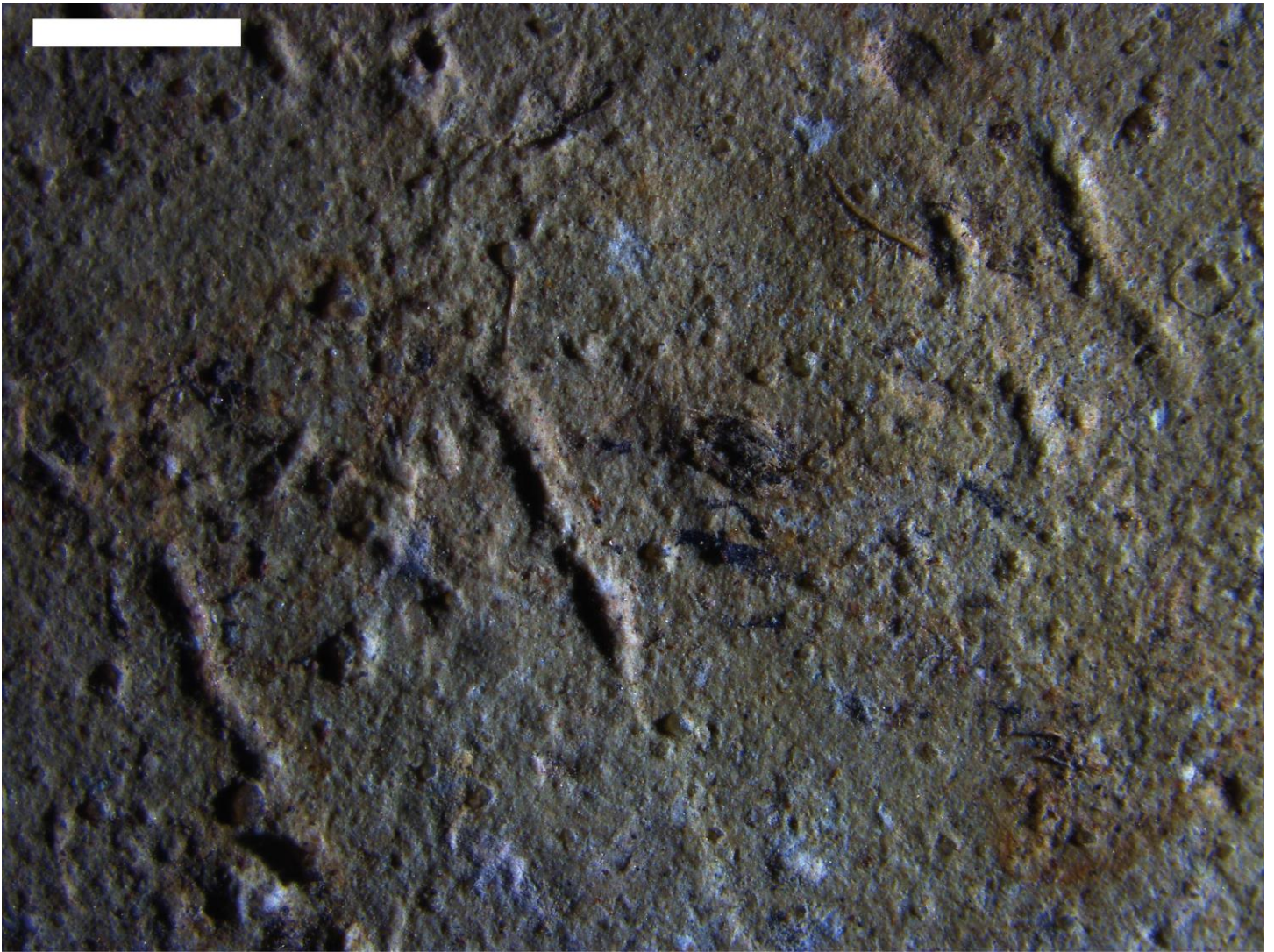


Figure S4. Details of *Irichnus saltatorius* sample CAP/1D-134. Scale bar of 2mm.



Figure S5. Details of *Irichnus saltatorius* sample CAP/1D-144. Scale bar of 5mm.



Figure S6. Details of *Irichnus saltatorius* sample CAP/1D-145. Scale bar of 5mm.

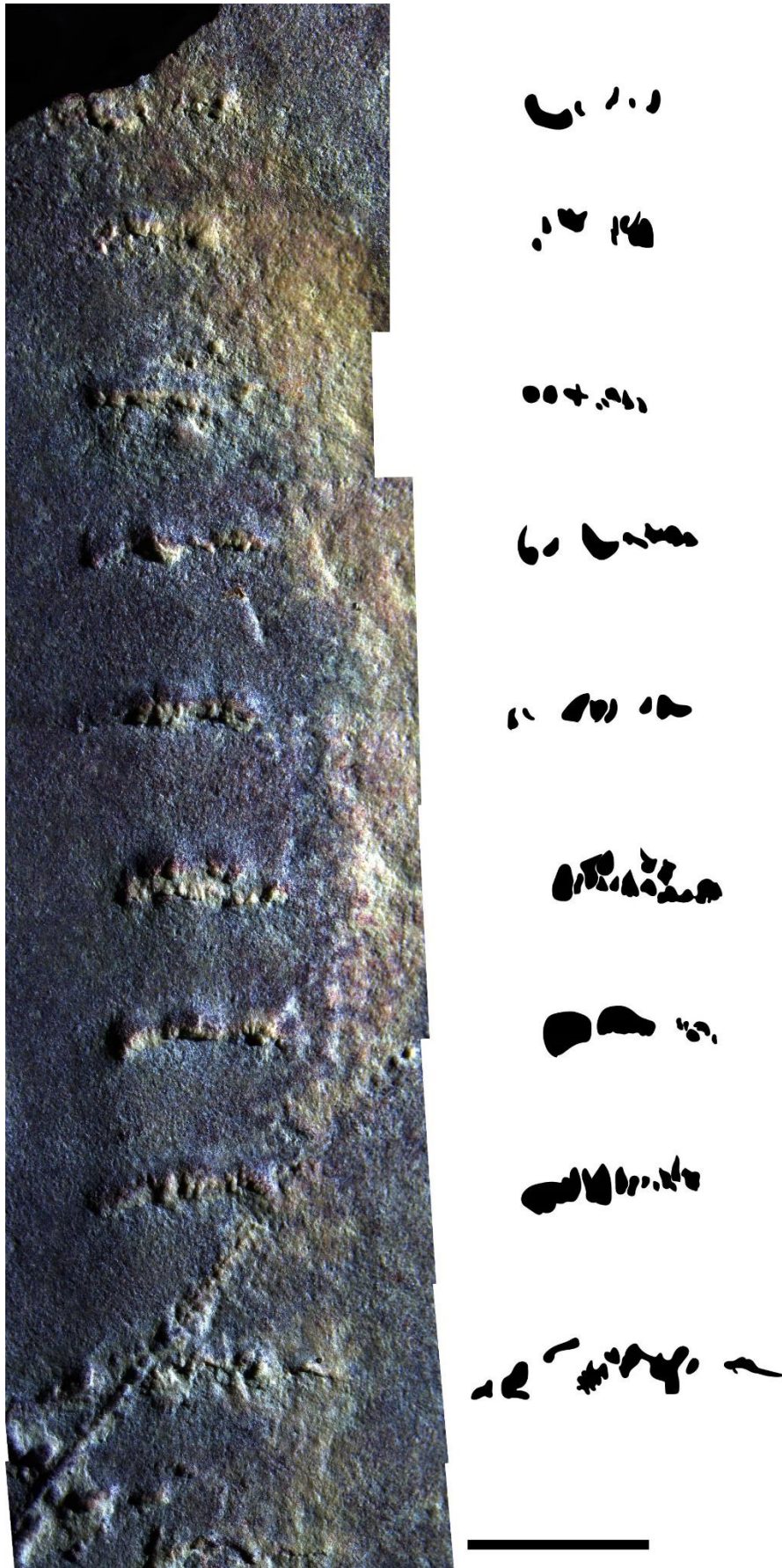


Figure S7. Details of *Irichnus saltatorius* sample CAP/1D-168. Scale bar of 5mm.



Figure S8. Trackways of *Irichnus saltatorius* sample CAP/ID-398. Scale bar of 10mm.



Figure S9. Sample CAP/1D-29. *Ip* = *Irichnus paripinnatus* isp. nov.; *Ut* = *Umfolozia terere* isp. nov.. Scale bar of 10mm.



Figure S10. Sample CAP/1D-51. *Ip* = *Irichnus paripinnatus* isp. nov.; *Ut* = *Umfolozia terere* isp. nov.. Scale bar of 10mm.



Figure S11. Sample FG 290/6 of *Warvichnium ulbrichi*, housed at the Geological-Palaeontological collection of the TU Bergakademie Freiberg. Ruler scale in millimetres.

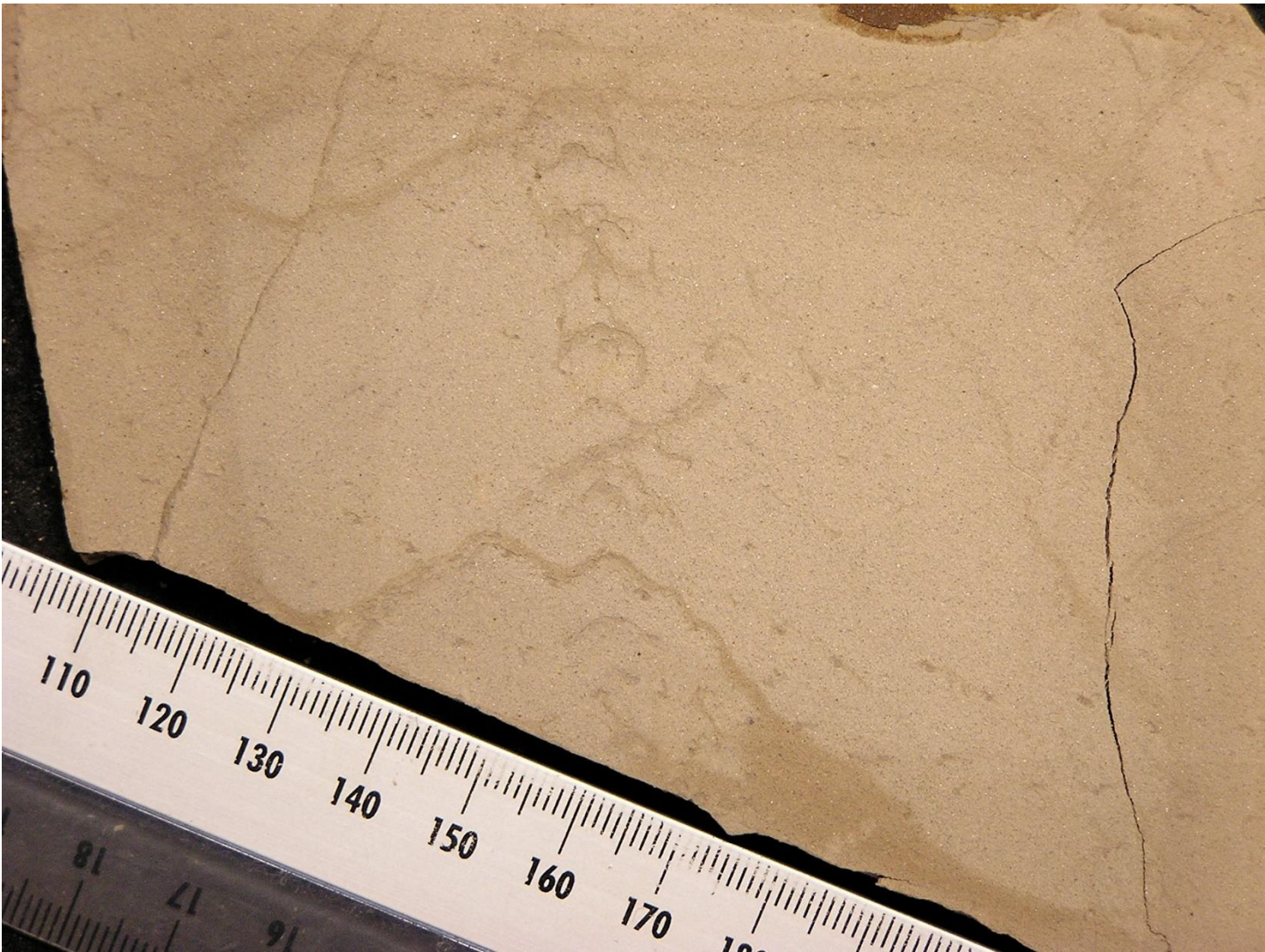


Figure S12. Sample FG 290/26 of *Irichnus saltatorius* isp. nov. (formerly *Warvichnium ulbrichi*), housed at the Geological-Palaeontological collection of the TU Bergakademie Freiberg. Ruler in millimetres.