

RESEARCH PAPER

Mutations in the tomato gibberellin receptors suppress xylem proliferation and reduce water loss under water-deficit conditions

Natanela Illouz-Eliaz^{*}, Idan Nissan^{*}, Ido Nir[†], Uria Ramon, Hagai Shohat and David Weiss[‡]

Institute of Plant Sciences and Genetics in Agriculture, The Robert H. Smith Faculty of Agriculture, Food and Environment, The Hebrew University of Jerusalem, PO Box 12, Rehovot 76100, Israel

^{*} These authors contributed equally to this work.

[†] Present address: Department of Biology, Stanford University, Stanford, CA, USA.

[‡] Correspondence: david.weiss@mail.huji.ac.il

Received 6 January 2020; Editorial decision 6 March 2020; Accepted 11 March 2020

Editor: Kris Vissenberg, University of Antwerp, Belgium

Abstract

Low gibberellin (GA) activity in tomato (*Solanum lycopersicum*) inhibits leaf expansion and reduces stomatal conductance. This leads to lower transpiration and improved water status under transient drought conditions. Tomato has three GIBBERELLIN-INSENSITIVE DWARF1 (GID1) GA receptors with overlapping activities and high redundancy. We tested whether mutation in a single GID1 reduces transpiration without affecting growth and productivity. CRISPR-Cas9 *gid1* mutants were able to maintain higher leaf water content under water-deficit conditions. Moreover, while *gid1a* exhibited normal growth, it showed reduced whole-plant transpiration and better recovery from dehydration. Mutation in *GID1a* inhibited xylem vessel proliferation, which led to lower hydraulic conductance. In stronger GA mutants, we also found reduced xylem vessel expansion. These results suggest that low GA activity affects transpiration by multiple mechanisms: it reduces leaf area, promotes stomatal closure, and reduces xylem proliferation and expansion, and as a result, xylem hydraulic conductance. We further examined if *gid1a* performs better than the control M82 in the field. Under these conditions, the high redundancy of GID1s was lost and *gid1a* plants were semi-dwarf, but their productivity was not affected. Although *gid1a* did not perform better under drought conditions in the field, it exhibited a higher harvest index.

Keywords: CRISPR-Cas9, drought, gibberellin, GID1 receptors, hydraulic conductance, tomato (*Solanum lycopersicum*), transpiration, xylem.

Introduction

Drought has a major impact on plant development and food supply, and is responsible for major losses of crop productivity (Mittler and Blumwald, 2010). Plants have adopted various strategies to cope with water deficiency, including maintaining water status by stomatal closure, accumulation of osmolytes and stress-related proteins, and changes in growth and development (Skirycz

and Inzé, 2010; Osakabe *et al.*, 2014). Rapid stomatal closure, expression of stress-related genes, and developmental changes in response to water deficiency are mediated primarily by the stress hormone abscisic acid (ABA; Cutler *et al.*, 2010). Several studies have suggested that the ABA-antagonist hormone gibberellin (GA) also has a role in these responses (Colebrook *et al.* 2014).

Abbreviations: GID1, GIBBERELLIN INSENSITIVE DWARF1; RWC, relative water content; SLY1, SLEEPY1; WUE, water use efficiency.

© The Author(s) 2020. Published by Oxford University Press on behalf of the Society for Experimental Biology. This is an Open Access article distributed under the terms of the Creative Commons Attribution License (<http://creativecommons.org/licenses/by/4.0/>), which permits unrestricted reuse, distribution, and reproduction in any medium, provided the original work is properly cited.

GA regulates numerous developmental processes throughout the life cycle of the plant, from germination to fruit development (Davière and Achard, 2013). All GA responses are suppressed by the nuclear DELLA proteins (Locascio *et al.*, 2013; Livne *et al.*, 2015). GA binding to its receptor GIBBERELLIN-INSENSITIVE DWARF1 (GID1) increases the affinity of the latter for DELLA. The formation of the GID1–GA–DELLA complex recruits an F-Box protein, SLEEPY1 (SLY1), to DELLA, leading to DELLA polyubiquitination and degradation in the proteasome (Harberd *et al.*, 2009). This initiates transcriptional reprogramming and activation of GA responses (Hauvermale *et al.*, 2012).

GID1 was first discovered in rice, and the rice mutant *gid1-1* is extremely dwarfed and insensitive to GA (Ueguchi-Tanaka *et al.*, 2005). While rice, similarly to other monocots, has a single GID1 gene, Arabidopsis has three homologues with partially overlapping functions (Griffiths *et al.*, 2006; Nakajima *et al.*, 2006). Similarly, tomato (*Solanum lycopersicum*) has three GA receptors: GID1a, GID1b1, and GID1b2. These receptors exhibit high redundancy under optimal controlled growth conditions, but under extreme ambient conditions, all three are required for robust growth (Illouz-Eliaz *et al.*, 2019). While *gid1b1* and *gid1b2* single mutants do not show a clear phenotype, *gid1a* is slightly shorter with darker green leaves. GID1a is the dominant GA receptor in the regulation of germination, stem elongation, and leaf expansion due to its having the highest affinity for the single tomato DELLA protein, PROCERA (PRO; Illouz-Eliaz *et al.*, 2019).

Recent studies have shown that altering GA levels or signaling improves plant tolerance to water-deficit stress (Colebrook *et al.*, 2014). Inhibition of GA biosynthesis by paclobutrazol increased tolerance to water deficiency in cereals (Plaza-Wüthrich *et al.*, 2016) and tomato (Pal *et al.*, 2016). Ectopic expression of *MhGAI1* (the tea crabapple DELLA gene) in tomato promotes drought tolerance (Wang *et al.* 2011). Inhibition of GA activity in tomato by overexpressing the Arabidopsis GA METHYL TRANSFERASE 1 (*AtGAMT1*) gene or the gain-of-function stable DELLA mutant gene *proΔ17* reduced whole-plant transpiration and improved resistance to drought (Nir *et al.*, 2014, 2017). Several possible mechanisms for this stress tolerance were suggested, including indirect effects on transpiration due to reduced plant size (Achard *et al.*, 2006; Magome *et al.*, 2008) and a direct effect on transpiration due to increased response to ABA in guard cells and rapid stomatal closure (Nir *et al.*, 2017). Low GA activity also led to the activation of various stress-related genes (Tuna *et al.*, 2008; Wang *et al.*, 2008) and the accumulation of osmolytes (Omena-Garcia *et al.*, 2019). GA also affects vascular development; it promotes xylem expansion and secondary vascular development (Ragni *et al.*, 2011; Dayan *et al.*, 2012; Aloni, 2013). Xylem vessel area can affect hydraulic conductance and water status in response to environmental changes (Brodribb, 2009; Melcher *et al.*, 2012).

GA has a pleiotropic effect on plant development. Since the three tomato GA receptors exhibit high redundancy in the regulation of growth, we examined here if mutation in a single GID1 can improve drought tolerance without affecting growth

and productivity. Our results show that mild attenuation of GA activity due to the loss of *GID1a* was sufficient to reduce whole-plant transpiration and water loss under water-deficit conditions without affecting plant growth. They also suggest that low GA activity affects transpiration by multiple mechanisms: it inhibits leaf growth, promotes stomatal closure, and reduces xylem vessel proliferation and expansion and therefore hydraulic conductivity.

Materials and methods

Plant materials and growth conditions

Tomato cv. M82 (*sp*⁻/*sp*⁻) plants were used throughout this study. The CRISPR-Cas9 *gid1* and *sly1* mutants (Illouz-Eliaz *et al.*, 2019) were in the M82 background. Plants were grown in a growth room set to a photoperiod of 12/12 h day/night, light intensity (cool-white bulbs) of ~250 μmol m⁻² s⁻¹, and temperature of 25 °C. In other experiments, plants were grown in a greenhouse under natural day-length conditions, light intensity of 700–1000 μmol m⁻² s⁻¹, and temperature of 18–30 °C. In the summer (April to August) of 2019 *gid1* single mutant lines and M82 were grown in an open field under ambient conditions (Acre, Israel).

Tomato SLY1 CRISPR/Cas9 mutagenesis, plant transformation, and selection of mutant alleles

Two single-guide RNAs (sgRNAs; Supplementary Table S1) were designed using the CRISPR-P tool (<http://cbi.hzau.edu.cn/crispr>). Vectors were assembled using the Golden Gate cloning system as described in Weber *et al.* (2011). The final binary vector, pAGM4723, was introduced into *Agrobacterium tumefaciens* strain GV3101 by electroporation. The construct was transferred into M82 cotyledons using transformation and regeneration methods described by McCormick (1991). Kanamycin-resistant T0 plants were grown and transgenic lines were selected and self-pollinated to generate homozygous transgenic lines. For genotyping of the transgenic lines, genomic DNA was extracted, and each plant was genotyped by PCR for the presence of the Cas9 construct. The CRISPR/Cas9-positive lines were further genotyped for mutations in *SISLY* (Solyc04g078390) using a forward primer to the left of the sgRNA1 target sequence and a reverse primer to the right of the sgRNA2 target sequence.

Relative water content determination

Leaf relative water content (RWC) was measured as follows: fresh leaf weight (FW) was measured immediately after leaf detachment. Leaves were then soaked for 8 h in 5 mM CaCl₂ in the dark at room temperature, and the turgid weight (TW) was recorded. Dry weight (DW) was recorded after drying the leaves at 70 °C for 48 h. RWC was calculated as (FW–DW)/(TW–DW)×100 (Sade *et al.*, 2009).

Measurements of stomatal index and density

Stomatal index (stomatal number/total number of epidermal cells) and stomatal density were determined using the rapid imprinting technique (Geisler *et al.*, 2000). This approach allowed us to reliably and simultaneously score hundreds of stomata from each experiment. Briefly, vinylpolysiloxane dental resin (eliteHD+; Zhermack Clinical) was attached to the abaxial side of the leaf, dried for 1 min, and then removed. The resin epidermal imprints were covered with transparent nail polish, which was removed once it dried and served as a mirror image of the resin imprint. The nail polish imprints were placed on glass coverslips and photographed under a model 1M7100 bright-field inverted microscope (Zeiss, Jena, Germany) with a mounted Hitachi HV-D30 CCD camera (Japan).

Measurement of leaf area

Total leaf area was measured in 6-week-old M82, *gid1a*, and *gid1a gid1b2* plants, using a model Li 3100 leaf area meter (LI-COR Biosciences, Lincoln, NE, USA).

Whole-plant transpiration, transpiration rate, and whole-canopy conductance measurements

Whole-plant transpiration rate was determined using an array of lysimeters placed in the greenhouse (Plantarray 3.0 system; Plant-DiTech) in the iCORE Center for Functional Phenotyping

(<http://departments.agri.huji.ac.il/plantscience/icore.phpon>), as described in detail by Halperin *et al.* (2017). Briefly, plants were grown in 4-liter pots under semi-controlled temperature conditions (20/32 °C night/day), natural day-length, and light intensity of approximately 1000 $\mu\text{mol m}^{-2} \text{s}^{-1}$. Each pot was placed on a temperature-compensated load cell with digital output (Vishay TedeA-Huntleigh) and sealed to prevent evaporation from the surface of the growth medium. The weight output of the load cells was monitored every 3 min. The data were analysed using SPACanalytics (Plant-Ditech) software to obtain the following whole-plant physiological traits: daily plant transpiration (weight loss between predawn and sunset) was calculated from the weight difference between the two data points. Whole canopy conductance (G_{sc}) was calculated by dividing E (transpiration rate/plant weight) by vapor pressure deficit (VPD). The plant daily weight gain (ΔPW_n) between consecutive days was:

$$\Delta PW_n = W_n - W_{n-1} \quad [1]$$

where W_n and W_{n-1} are the container weights upon drainage termination on consecutive days, n and $n-1$. The weight on day n is the sum of plant weight on day $n-1$ and the weight gain ΔPW_{n-1} :

$$PW_n = PW_{n-1} + \Delta PW_n \quad [2]$$

The whole-plant water use efficiency (WUE) during a defined period was determined by the ratio between the sum of the daily plant fresh-weight gain (ΔPW) and water consumed throughout this period (cumulative daily transpiration, PDT_{*n*}):

$$WUE = \frac{\sum \Delta PW_n}{\sum PDT_n} \quad [3]$$

Isolation of guard cells for qRT-PCR analysis

Guard cells from tomato leaves were isolated according to Nir *et al.* (2017). Briefly, 20 g of fully expanded leaves without the veins were ground twice in a blender in 100 ml cold distilled water, each time for 1 min. The blended mixture was poured onto a 200- μm mesh (Sefar AG, Heiden, Switzerland) to remove mesophyll and broken epidermal cells. The remaining epidermal peels were rinsed thoroughly with deionized water. The peels were then transferred into 10 ml buffer (Araújo *et al.*, 2011) containing the enzyme CELLULYSIN cellulase from *Trichoderma viride* (Calbiochem, La Jolla, CA, USA) and digested for 1 h at a shaking speed of 150 rpm. This enzymatic treatment digests pavement cells, but not guard cells (Wang *et al.*, 2011). The digested material was poured again onto a 200 μm mesh, placed in a tube, and rinsed thoroughly with digestion buffer (without the enzyme). To remove residues of buffer and cell particles, the tubes were centrifuged at 4 °C for 5 min at 523 *g*. Samples of digested epidermal strips were stained with neutral red, and cell vitality was examined microscopically (Nir *et al.*, 2017).

qRT-PCR analysis

qRT-PCR analysis was performed using an Absolute Blue qPCR SYBR Green ROX Mix (AB-4162/B) kit (Thermo Fisher Scientific, Waltham, MA USA). Reactions were performed using a Rotor-Gene 6000 cyclor (Corbett Research, Sydney, Australia). A standard curve was obtained using dilutions of the cDNA sample. The expression was quantified using

Corbett Research Rotor-Gene software. Three independent technical repeats were performed for each sample. Relative expression was calculated by dividing the expression level of the examined gene by that of *ACTIN*. Primer sequences are presented in Supplementary Table S1.

Measurements of hydraulic conductance

Measurements of volumetric flow-rate, to determine hydraulic conductance, were performed according to Melcher *et al.* (2012) with some modifications. Three-centimeter-long segments were dissected from the stems from the same location. The tops of the segments were connected via silicone tubing to a pipet containing 15 mM KCl, and mounted vertically, while the bottom end of the stem was connected to a drainage tube. To calculate the hydraulic conductance (K') we used the following equation:

$$K' = \frac{Q \times L}{\Delta P} \quad [4]$$

The volume of fluid that passed through the stem during a constant time interval was measured to calculate the volumetric flow rate (Q ; $\text{mmol H}_2\text{O s}^{-1}$), where L is length of the stem segment (m) and ΔP is pressure

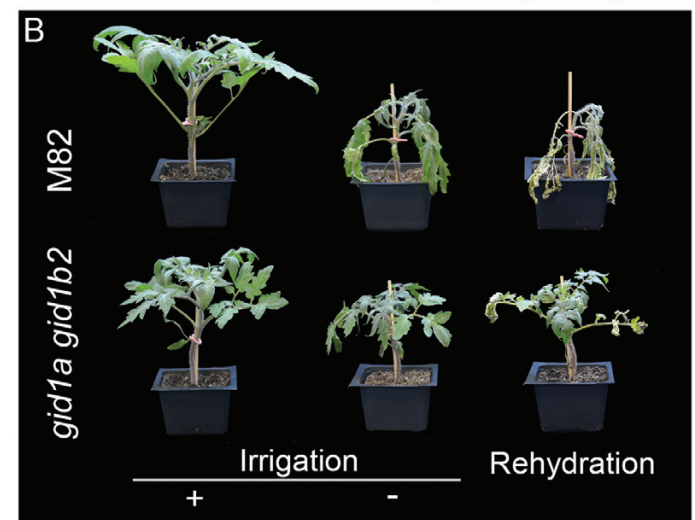
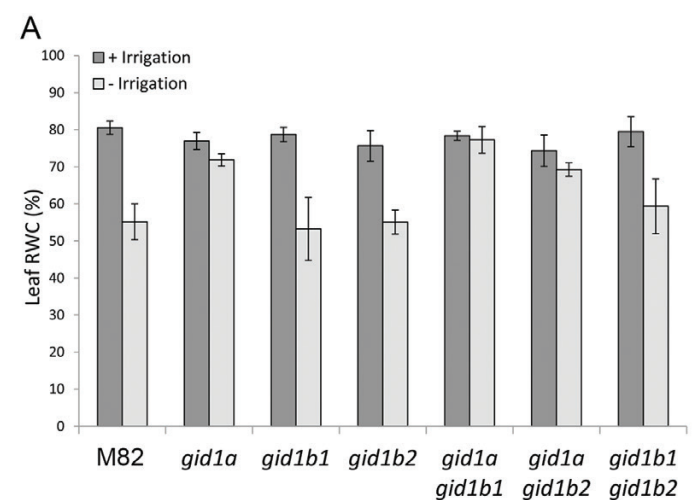


Fig. 1. The *gid1*s exhibit reduced water loss under water-deficit conditions. (A) Average leaf relative water content (RWC) of control M82 and *gid1* single and double mutants grown with or without irrigation for 7 d. Values are means of eight replicates \pm SE. (B) Representative M82 and *gid1a gid1b2* plants grown under normal irrigation regime (+irrigation) or without irrigation for 7 d (-irrigation). After 14 d without irrigation, plants were rehydrated and recovery was assessed after 10 d. (This figure is available in color at JXB online.)

(the driving force, MPa, calculated by the hydraulic-head height). All dissections and connections of the apparatus were performed under water to avoid embolism.

Microscopic analysis of the xylem

Stem or petiole segments were manually dissected to give thin cross section slices using a razor blade. The cross sections were then stained using a modified Weisner reaction (Pradhan Mitra and Loqué, 2014), which stains the lignin in the xylem vessels. The stained cross sections were examined under a LEICA ICC50W light microscope. The images were then manually analysed using ImageJ software (<http://rsb.info.nih.gov/ij/>), and xylem vessel area, diameter, and number were measured.

Calculation of theoretical specific hydraulic conductivity

To evaluate xylem specific hydraulic conductivity (K_{ts}), we used the modified Hagen–Poiseuille equation (Tyree and Ewers, 1991), which calculates the theoretical hydraulic conductivity (K_t ; mmol m MPa⁻¹ s⁻¹) of a bundle assuming perfectly cylindrical pipes:

$$K_t = \frac{\pi\rho}{128\eta} \sum_{i=0}^n (d_i^4) \quad [5]$$

where d is the vessels diameter, ρ is the fluid density in kg m⁻³, η is the fluids dynamic viscosity in MPa s⁻¹, and n is the number of pipes in the bundle. The theoretical specific hydraulic conductivity (K_{ts} ; mmol m⁻¹

s⁻¹ MPa⁻¹) was calculated by normalizing K_t to leaf area (LA) (Hochberg *et al.*, 2015):

$$K_{ts} = \frac{K_t}{LA} \quad [6]$$

Leaf area was calculated by scanning the foliage (LaserJet pro 400 MFP M475dw), and measuring the leaf area with ImageJ (<http://rsb.info.nih.gov/ij/>).

Results

The loss of GID1 reduced water loss and whole-plant transpiration under water-deficit conditions

To examine the contribution of the three GID1 receptors to plant water status, we first compared the rate of water loss in M82 and all single and double *gid1* mutants under water-deficit conditions. All plants were grown until they produced five expanded leaves, after which irrigation was stopped and the soil was allowed to dry out progressively. After 7 d, non-irrigated M82, *gid1b1*, *gid1b2*, and the double mutant *gid1b1 gid1b2* plants began to wilt, whereas *gid1a*, *gid1a gid1b1*, and *gid1a gid1b2* lines remained turgid. At this time point, we measured relative RWC of the leaves. RWC in M82, *gid1b1*, *gid1b2*,

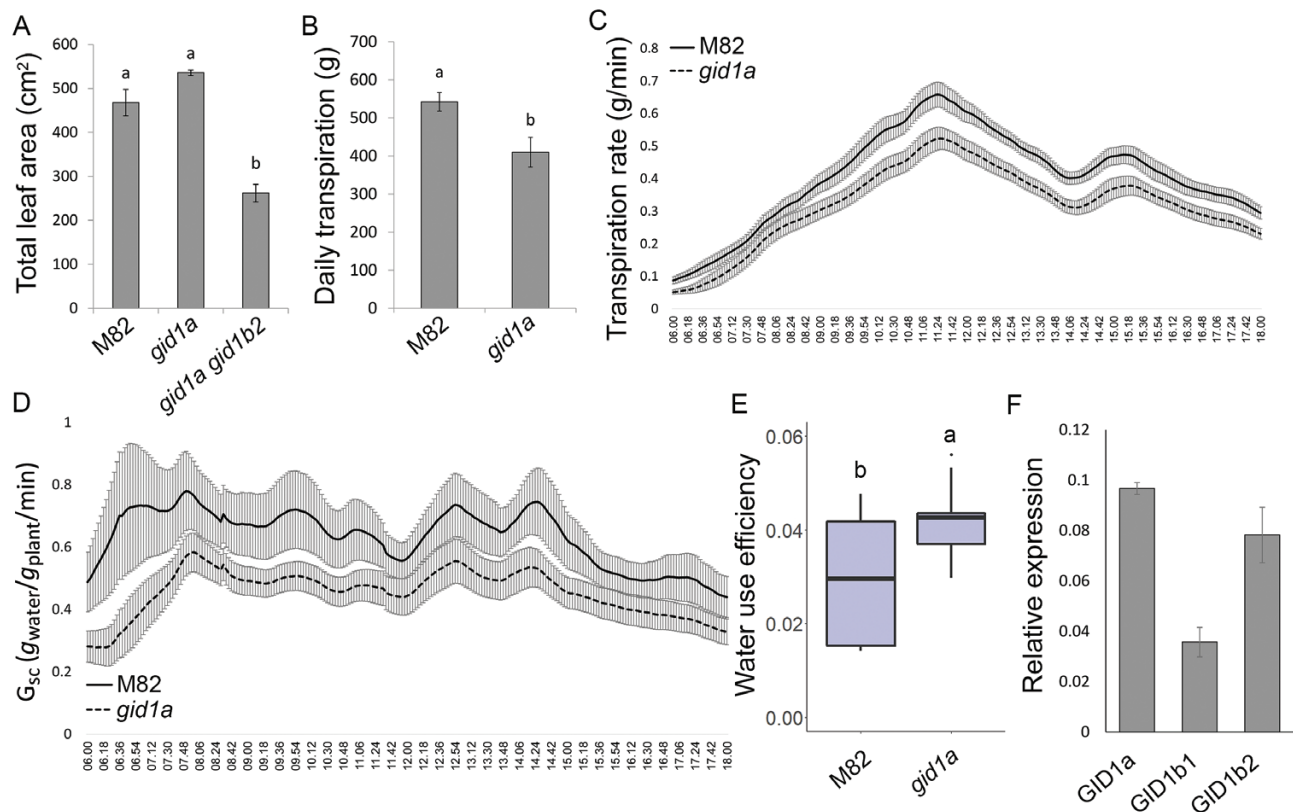


Fig. 2. Loss of GID1a reduced whole-plant transpiration. (A) Total leaf area of control M82, *gid1a*, and *gid1a gid1b2* 6-week-old plants. Values are mean of nine plants \pm SE. Lowercase letters represent significant differences between the lines (Student's *t*-test, $P < 0.05$). (B) Whole plant daily transpiration of M82 and *gid1a*. Plants were placed on lysimeters and pot (pot+soil+plant) weight was measured every 3 min. Values are means of 13 plants \pm SE. Lowercase letters represent significant differences between respective lines (Student's *t*-test, $P < 0.05$). (C) Whole-plant transpiration rate over the course of 12 h (06.00–18.00 h). Values are means of 13 plants \pm SE. (D) Whole canopy conductance (G_{sc}) of M82 and *gid1a* (calculated by dividing E (transpiration rate/plant weight) by vapor pressure deficit (VPD)). Values are means of 13 plants \pm SE. (E) Whole plant water use efficiency (WUE) of M82 and *gid1a* was calculated as the ratio between plant growth and transpiration. Data (taken from 13 different plants) are graphically presented as box and whisker plots. Lowercase letters represent significant differences between respective lines (Student's *t*-test, $P < 0.05$). (F) qRT-PCR analysis of *GID1* expression in M82 isolated guard cells. Values are means of three biological replicates \pm SE. (This figure is available in color at JXB online.)

and *gid1b1 gid1b2* was reduced (compared with irrigated plants) by approximately 20%, while in *gid1a*, *gid1a gid1b1*, and *gid1a gid1b2* RWC was similar to that of the irrigated plants (Fig. 1A). We continued the drought treatment to M82 and *gid1a gid1b2* plants and after three more days, *gid1a gid1b2* plants also wilted. Four days later, plants were rehydrated and their ability to recover was monitored. M82 plants failed to recover, but *gid1a gid1b2* plants fully recovered, although several leaves showed necrotic lesions (Fig. 1B). These results suggest that the loss of *GID1*, similar to increased *DELLA* activity (Nir *et al.*, 2017), reduces water loss under water deficit conditions. They also propose that *GID1a* has the most prominent role in this process.

Leaf area in 4-week-old *gid1a gid1b2* was smaller than, but in *gid1a* similar to M82 (Fig. 2A). Since *gid1a* exhibited reduced water loss but similar leaf area to M82, we further focused on this line. We first analysed microscopically the abaxial leaf epidermal tissues of M82 and *gid1a*. We did not find significant differences in stomatal index (Supplementary Fig. S1A), suggesting that the loss of *gid1a* does not change the ratio between pavement cells and guard cells. Also stomatal density was not affected by the mutation (Supplementary Fig. S1B), suggesting that the total number of stomata in *gid1a* is similar to M82. Previously we showed that all double mutants exhibit reduced whole-plant transpiration (Illouz-Eliaz *et al.*, 2019). Here we examined whole-plant transpiration in irrigated M82 and *gid1a* mutant plants grown in a greenhouse using an array of load cells (lysimeters) that simultaneously followed the daily weight loss of each plant (Nir *et al.*, 2017). Daily transpiration, transpiration rate, and whole-canopy conductance of *gid1a* were significantly lower than those of M82 (Fig. 2B–D). Since transpiration of *gid1a* was lower than that of M82 but their growth was similar, the WUE of *gid1a* was higher than that of M82 (Fig. 2E). These results imply that mutations in GA receptors promote stomatal closure similar to the effect of stable *DELLA* overexpression (*35S:proΔ17*, Nir *et al.*, 2017). We therefore tested if the three *GID1*s are expressed in guard cells. To this end, we isolated guard cells from M82 and analysed the expression of the three genes in guard-cell-enriched samples. All *GID1* genes were expressed in guard cells and *GID1a* exhibited the highest expression (Fig. 2F).

Next, we tested the effect of water-deficit conditions on transpiration rate in M82 and *gid1a* plants. After 2 weeks of growth on the lysimeters, we gradually reduced irrigation (each day by 50%) to expose M82 and *gid1a* plants to water-deficit conditions. In the first 4 d of the water-deficit treatment, transpiration rate in M82 was higher than in *gid1a* (Fig. 3A). However, at day 6, as water availability in the pots become a limiting factor, transpiration rate of M82 rapidly declined. On the other hand, transpiration of *gid1a* declined more slowly and continued for a few more days. When daily transpiration of each individual plant reached a minimum volume of 50 ml d⁻¹, irrigation was stopped completely. After 3 d of complete drought, we rehydrated the plants and plant recovery was monitored. Recovery was evaluated by the time required for each plant to return to full transpiration (the level of transpiration measured just before the beginning of the drought treatment; Negin and Moshelion,

2017). While *gid1a* plants had fully recovered within 3 d, M82 plants did not recover completely even after 10 d of irrigation (Fig. 3B).

GID1 activity promote xylem vessel proliferation and hydraulic conductivity

We next explored whether the loss of GA receptors affects additional factors that can be attributed to transpiration limitation. Previously we showed that mutation in *GID1a* inhibits root growth (Illouz-Eliaz *et al.*, 2019). We therefore tested if

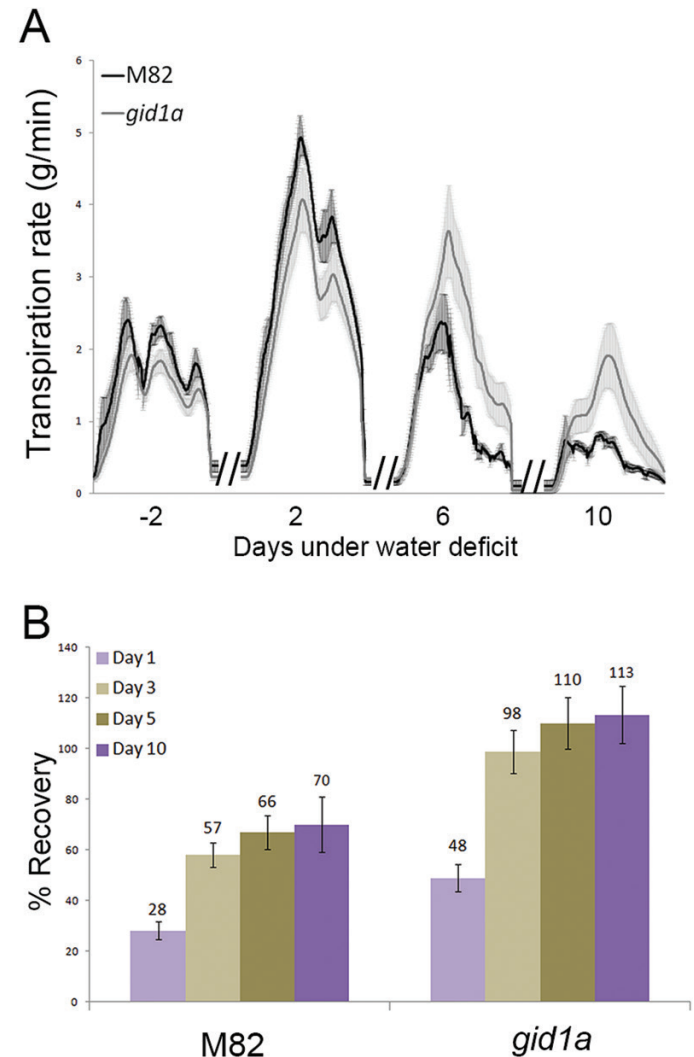


Fig. 3. Loss of *GID1a* reduces transpiration under water deficit conditions. (A) Transpiration rate in M82 and *gid1a* under water limited conditions. After 2 weeks of irrigation on the lysimeters, irrigation was gradually reduced (50% of the previous day's transpiration, automatically controlled by the system for each plant separately) until it was completely stopped. Transpiration rate in selected representative days during the water deficit treatment are presented; 2 d before the beginning of the water-deficit treatment (–2) and 2, 6, and 10 d into the drought treatment. Values are means of eight plants \pm SE. (B) Recovery of M82 and *gid1a* from the drought treatment. Recovery was evaluated by the time required for each plant to return to the level of transpiration measured just before the beginning of the water-deficit treatment. Values are means of eight plants \pm SE. Numbers above columns represent the percentage of maximum transpiration (see above). (This figure is available in color at JXB online.)

the root system of the strongest double mutant, *gid1a gid1b2*, limits water uptake and water loss under water-deficit conditions. To eliminate the effect of the shoot, we grafted M82 scions on *gid1a gid1b2* and M82 rootstocks. Grafted plants were grown for 2 weeks under normal irrigation and then irrigation was stopped for dehydration. After 4 d, when plants started wilting, leaf RWC was measured. We did not find differences in the RWC between plants grafted on *gid1a gid1b2* or M82 rootstocks (Fig. 4A). Moreover, all plants, regardless their rootstocks, wilted at the same time (Fig. 4B). These results suggest that *gid1* roots do not affect the rate of water loss under water-deficit conditions.

Since GA promotes secondary vascular development (Ragni *et al.*, 2011; Dayan *et al.*, 2012; Aloni, 2013), we examined if the loss of *GID1s* affects xylem development and hydraulic conductance. We first analysed the xylem vessels in the leaf petioles of M82 and *gid1a* (leaf no. 4, top down). Microscopic analysis of total vessel area showed ca. 10% reduction in *gid1a* (Fig. 5A). The reduced total xylem area was a result of reduced number of vessels (Fig. 5B). We next evaluated how the reduced vessel number affects hydraulic conductance. To this end, we first calculated the specific theoretical hydraulic conductance of the xylem vessels in M82 and *gid1a*, using the Hagen–Poiseuille equation (Tyree and Ewers, 1991) and normalized it to the supported leaf area (Hochberg *et al.*, 2015). The specific theoretical hydraulic conductivity of *gid1a* was ca. 23% lower than that of M82 (Fig. 5C). We then tested the actual hydraulic conductance, by measuring volumetric-flow rate in detached stem segments, taken from M82 and *gid1a* (Melcher *et al.*, 2012). Hydraulic conductance of *gid1a* stems was ca. 20% lower than that of M82 (Fig. 5D). We also analysed the stem vessel area and number in 4-week-old M82 and *gid1a* plants. Total stem

vessel area was 35% lower in *gid1a* due to a 32% reduction in the number of xylem vessels (Fig. 5E, F; Supplementary Fig. S2A). The loss of *GID1a* did not affect xylem vessel expansion and the average area of individual xylem vessels in *gid1a* was similar to that in M82 (Supplementary Fig. S2B). To test if this is a general response to reduced GA activity, we analysed xylem vessels and hydraulic conductance in transgenic plants overexpressing the stable DELLA protein *proΔ17* (*35:proΔ17*, Nir *et al.*, 2017). It should be noted that the inhibition of GA activity in *35:proΔ17* is much stronger than in *gid1a*. The number of vessels in *35:proΔ17* was 63% lower than in M82 (Supplementary Fig. S3A, B). In these transgenic plants, the reduced GA activity affected also vessel size and the average size of individual vessels was 26% lower than in M82 (Supplementary Fig. S3C). Total vessel area in *35:proΔ17* was ca. 70% lower than in M82 and hydraulic conductance (volumetric flow rate) ca. 80% lower (Supplementary Fig. S3D, E).

To study further the effect of GA on xylem vessel development, we examined plants with even stronger reduction in GA activity. To this end, we generated a CRISPR–Cas9-derived *sly1* mutant. *SLY1* is the F-box that targets DELLA for degradation. Similar to Arabidopsis and rice, tomato has a single *SLY1* (*SISLY1*, Solyc04g078390; Liu *et al.*, 2016). The mutations were analysed by PCR and sequenced (Supplementary Fig. S4A). A homozygous mutant was obtained and the Cas9 construct was segregated out by back-crossing to M82. *sly1* has a single nucleotide insertion causing a frame shift prior to the LSL domain (Supplementary Fig. S4B), which is essential for the interaction with DELLA (Hirano *et al.*, 2010). The homozygous *sly1* exhibited severe dwarfism and small dark-green leaves (Fig. 6A). *Sly1* exhibited insensitivity to exogenous treatment with 100 μM GA₃ (Supplementary Fig. S4C), suggesting

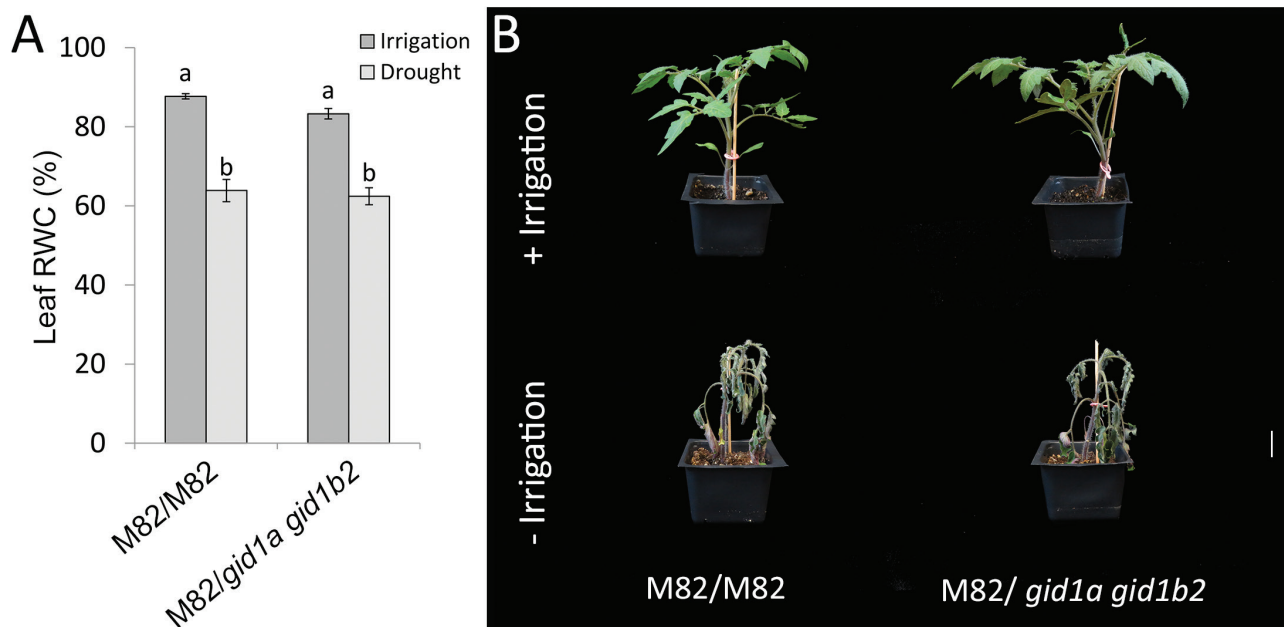


Fig. 4. Grafting of M82 scions on M82 or *gid1a gid1b2* rootstocks. Grafted plants were grown for 2 weeks under normal irrigation (+irrigation) and then irrigation was stopped for dehydration (–irrigation). (A) After 4 d, when plants started wilting, leaf RWC was measured. Values are mean of six plants ±SE. Lowercase letters represent significant differences between the lines (Student’s *t*-test, $P < 0.05$). (B) After 7 d of the water-deficit treatment, representative plants were photographed. (This figure is available in color at JXB online.)

strong inhibition of GA responses. To examine the effect of the reduced GA activity on xylem vessel development, we analysed microscopically petioles of *sly1* and M82. Since *sly1* develops very slowly, we analysed *sly1* and M82 petioles with similar diameter (the mutant leaves were much older). Figure 6B shows fewer and much smaller vessels in *sly1* compared with M82. These results suggest that reduced GA activity suppresses xylem vessel proliferation and expansion and these affect hydraulic conductance and probably limit transpiration.

gid1a in the field

We tested if the lower transpiration of the *gid1* mutant lines has an advantage in the field, under drought conditions. M82 and all single mutant lines were planted in an open commercial field and the experiment was designed according to Gur and Zamir (2004). Fifteen plants from each line (M82, *gid1a*, *gid1b1*, and *gid1b2*) were planted randomly and were irrigated normally throughout the experiment. Fifteen other plants of each line were irrigated normally for 3 weeks and then irrigation was

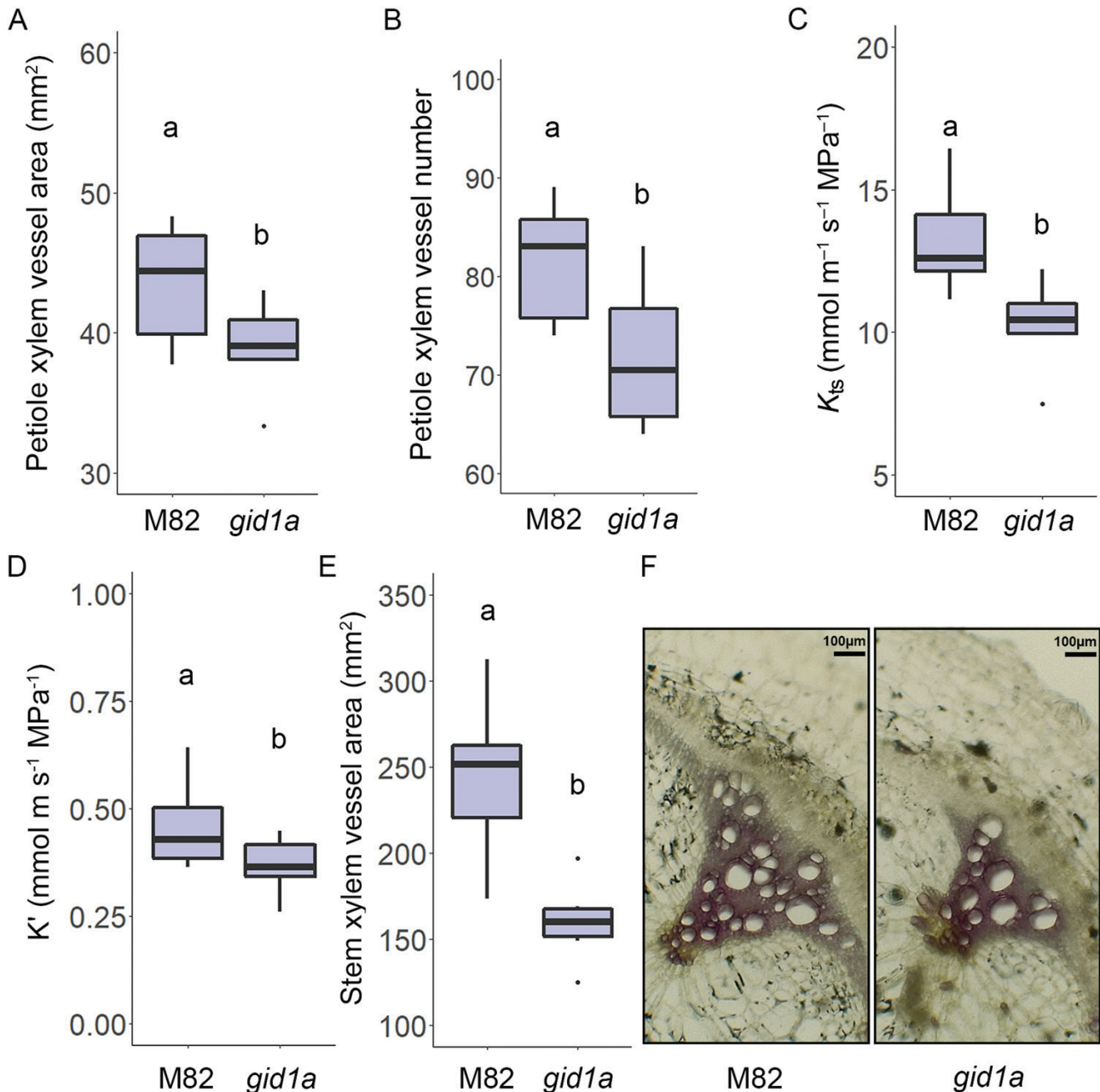


Fig. 5. The loss of GID1a reduces xylem vessel proliferation and hydraulic conductance. (A, B) Total xylem vessel area (A) and xylem vessel number (B) in the base of the leaf petioles of M82 and *gid1a* (leaf no. 4, top down). (C) Theoretical specific hydraulic conductance (K_{ts}) of the xylem vessels in M82 and *gid1a*. For calculation of K_t , the Hagen–Poiseuille equation (Tyree and Ewers, 1991) was used. To calculate K_{ts} , K_t was normalized to the supported leaf area (Hochberg et al., 2015). (D) Volumetric-flow rate was measured in detached stem segments, taken from 4-week-old M82 and *gid1a* plants to calculate the actual hydraulic conductance (K'). (E) Total xylem vessel area in M82 and *gid1a* stems. Data in (A–E) (taken from six different plants) are graphically presented as box and whisker plots. Lowercase letters represent significant differences between respective lines (Student's *t*-test, $P < 0.05$). (F) Representative stem (as in E) cross sections of M82 and *gid1a* stained with Wiesner stain. Scale bar: 100 μm. (This figure is available in color at JXB online.)

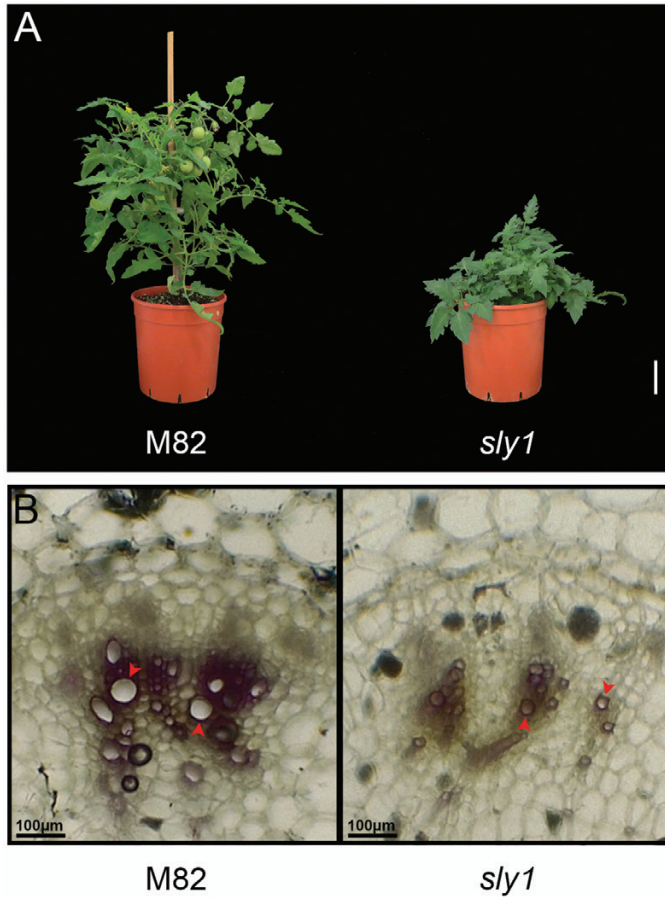


Figure 6. Loss of *S/SLY1* suppressed xylem vessel proliferation and expansion. (A) Two-month-old M82 and representative CRISPR-Cas9-derived *sly1* mutant. Scale bar: 3 cm. (B) Representative petiole cross sections of M82 and *sly1* stained with Wiesner stain. *sly1* and M82 petioles with similar diameter (the mutant leaves were much older) were microscopically analysed. Scale bar: 100 μm. (This figure is available in color at *JXB* online.)

stopped until harvesting (approximately three more months). It should be noted that during the drought treatment (May to August, Acre, Israel) no rain was recorded. Under a normal irrigation regime, all single *gid1* mutant lines exhibited reduced growth compared with M82 (fresh weight, Fig. 7A). This loss of redundancy and semi-dwarfism of the *gid1s* under ambient conditions was reported by us before (Illouz-Eliaz *et al.*, 2019). Despite this growth suppression, the single *gid1* mutant had similar fruit yield to M82 (green and red fruit; Fig. 7B). The drought treatment had a stronger effect on M82 growth (as can be seen from the vegetative weight loss) compared with *gid1* plants. However, M82 plants showed slightly higher vegetative fresh weight under drought conditions compared with all three *gid1* single mutants (Fig. 7A). The reduction in fruit yield under water-deficit conditions was similar in all lines (approximately 50% in M82 and all single *gid1* mutants; Fig. 7B; Supplementary Fig. S5). Finally, we evaluated the parameter of harvest index (total yield per plant weight) for each line. *gid1a* showed a significantly higher value of harvest index than all other lines, including M82 (Fig. 7C).

Discussion

Abiotic stresses, including drought, reduce GA levels and suppress plant growth (Colebrook *et al.*, 2014). The reduced GA activity promotes tolerance to drought (Nir *et al.*, 2017). Several possible mechanisms of how GA improves tolerance and/or drought avoidance have been proposed, including reduced transpiration due to reduced plant size (Achard *et al.*, 2006; Magome *et al.*, 2008; Nir *et al.*, 2014) and activation of various stress-related genes (Tuna *et al.*, 2008; Wang *et al.*, 2008). In tomato, reduced GA activity also promotes stomatal closure and reduces water loss under water-deficit conditions (Nir *et al.*, 2014, 2017). It was suggested that accumulating

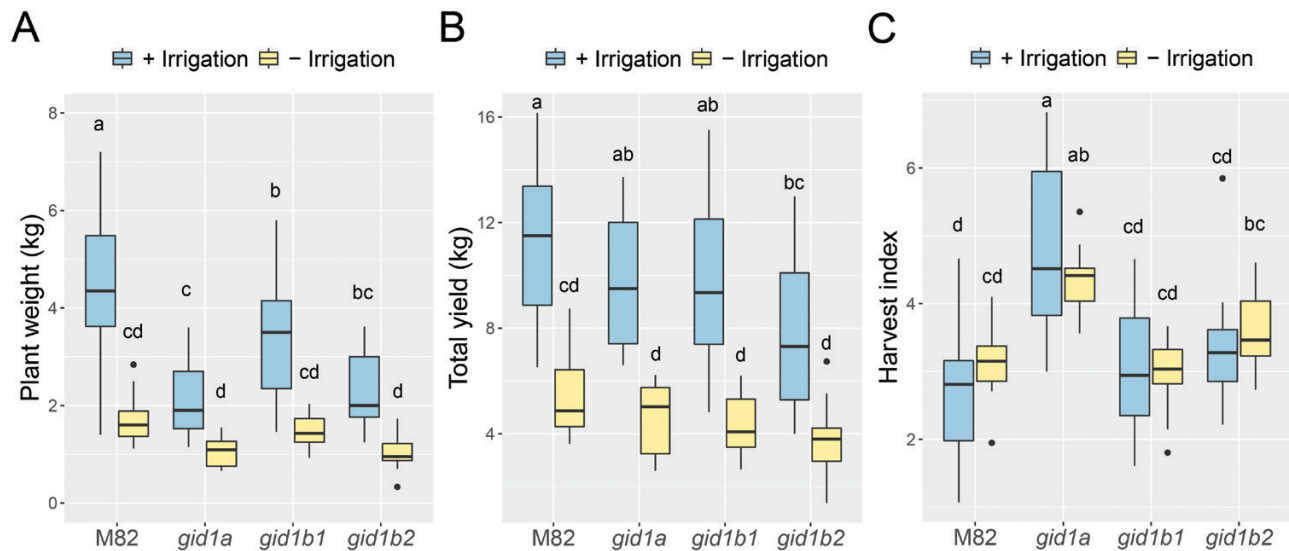


Fig. 7. *gid1a* plants exhibit high harvest index in the field under irrigation and drought conditions. M82 and all single *gid1* mutants were planted in the field. Plants from each line were planted randomly and were irrigated normally throughout the experiment. Half of the plants of each line were irrigated normally for 3 weeks and then irrigation was stopped until harvesting (approximately three more months). (A) Plant vegetative fresh weight (after removal of all fruits) at harvest. (B) Total fruit yield (green and red fruits). (C) Harvest index (total yield to vegetative fresh weight). Data in (A–C) (taken from 15 different plants) are graphically presented as box and whisker plots. Lowercase letters represent significant differences between respective treatment and lines (Tukey–Kramer HSD, $P < 0.05$). (This figure is available in color at *JXB* online.)

DELLA (due to the reduced GA levels) promotes ABA responses in guard cells.

Low GA activity has a pleiotropic effect on plant development. Since the three tomato GA receptors, *GID1*s, have overlapping activities and high redundancy under normal growth conditions (Illouz-Eliaz *et al.*, 2019), we examined here if mutation in *GID1* can improve water status under water-deficit conditions, without affecting growth and yield. Mutation in the most dominant GA receptor, *GID1a*, and its double mutants, *gid1a gid1b1* and *gid1a gid1b2*, exhibited lower whole-plant transpiration and reduced water loss under controlled water-deficit conditions (Figs 1, 2; Illouz-Eliaz *et al.*, 2019). The lower transpiration in *gid1a gid1b2* can be explained simply by the reduction in plant size (Fig. 2). However, leaf area, stomatal density and stomatal index were not affected in *gid1a* (Fig. 2; Supplementary Fig. S1). Thus, the reduced transpiration in this mutant probably resulted from reduced stomatal conductance.

Reduced hydraulic conductance of the xylem vessels leads to lower stomatal conductance and therefore to reduced transpiration (Brodrribb and Holbrook, 2003; Brodrribb, 2009; Melcher *et al.*, 2012). In Arabidopsis, GA promotes xylem-area expansion, due to secondary xylem differentiation (Ragni *et al.*, 2011; Aloni, 2013). In tobacco stems, GA promotes cambial proliferation and secondary vascular development (Dayan *et al.*, 2012). Here we show that mild suppression of GA activity in *gid1a* reduced xylem vessel number, which may explain the lower hydraulic conductance (Fig. 5). In lines that are more affected in GA signaling (*35S:proΔ17* and *sly1* mutant), we found reduced number of vessels and reduced vessel size (Fig. 6). The reduced number and size of vessels correlated well with the reduced GA activity (*M82>gid1a>35S:proΔ17>sly1*). Thus, we suggest that decreased GA activity affects transpiration by multiple mechanisms: it reduces leaf area by inhibition of cell division and elongation and directly promotes stomatal closure by increasing ABA responses in guard cells (Nir *et al.*, 2017) and indirectly by reducing hydraulic conductance due to reduce xylem vessel number and size. While the mild attenuation of the GA signal in *gid1a* was not sufficient to inhibit stem elongation and leaf expansion, it was severe enough to suppress xylem vessel differentiation. This indicates that xylem vessel differentiation is extremely sensitive to changes in GA activity.

The lower transpiration found in the different GA mutants suggests that the improved performance of these lines under transient water deficit conditions is caused by drought avoidance (Kooyer, 2015). In the field, however, the *gid1* mutants did not show advantage over the wild type M82 under drought conditions (fruit yield; Fig. 7B). Roots respond to water potential gradient and grow towards higher moisture content, a phenomenon called hydrotropism (Dietrich, 2018). In the field, the substantially larger root zone increases the soil water reservoir, enabling roots to find new sources of moisture. Thus, the plants sustained longer periods of water deficit conditions and were less dependent on the rate of transpiration.

While *gid1a* plants exhibited normal development in a growth room, they were semi-dwarf in the field (Fig. 7A). This loss of redundancy under ambient conditions was demonstrated by us before; under extreme environmental conditions,

the activity of all three *GID1*s is required for robust growth (Illouz-Eliaz *et al.*, 2019). Surprisingly, the decreased in growth of *gid1a* in the field did not affect fruit yield under both well-watered and water-deficit conditions, and therefore these plants showed the highest harvest index (fruit weight/plant fresh weight; Fig. 7C). Similarly, reduced GA activity suppresses growth but not yield in the 'green revolution' cereal varieties (Hedden, 2003; Harberd *et al.*, 2009). This suggests that partial reduction in GA activity can restrict growth without affecting productivity. Harvest index is an important agronomic trait; it allows planting at higher density to obtain higher yield per unit area (Gifford and Evans, 1981). Thus, *gid1a* allele may be used to increase yield in cultivars with low harvest index. The potential of using the *gid1a* allele in breeding for higher yield requires further study.

Supplementary data

Supplementary data are available at *JXB* online.

Fig. S1. Stomatal density and index in M82 and *gid1a*.

Fig. S2. Stem xylem vessel number and area in M82 and *gid1a*.

Fig. S3. Xylem proliferation and expansion in *35:proΔ17*.

Fig. S4. Analysis of the CRISPR-Cas9 derived *sly1* mutant.

Fig. S5. Field test for yield loss under drought.

Table S1. List of primers and sgRNAs used in this study.

Acknowledgements

This research was supported by a research grants from the Israel Ministry of Agriculture and Rural Development (12-01-0014) and the Israel Ministry of Agriculture and Rural Development (Eugene Kandel Knowledge Center) as part of the 'Root of the Matter – The Root Zone Knowledge Center for Leveraging Modern Agriculture' to DW. We thank Dr Uri Hochberg, Dr Yotam Zait and Prof. Menachem Moshelion for helpful discussion. We also thank Shula Blum, Itamar Shenhar, and Shai Turgeman for technical assistance.

References

- Achard P, Cheng H, De Grauwe L, Decat J, Schoutteten H, Moritz T, Van Der Straeten D, Peng J, Harberd NP. 2006. Integration of plant responses to environmentally activated phytohormonal signals. *Science* **311**, 91–94.
- Aloni R. 2013. Role of hormones in controlling vascular differentiation and the mechanism of lateral root initiation. *Planta* **238**, 819–830.
- Araújo WL, Nunes-Nesi A, Osorio S, *et al.* 2011. Antisense inhibition of the iron-sulphur subunit of succinate dehydrogenase enhances photosynthesis and growth in tomato via an organic acid-mediated effect on stomatal aperture. *The Plant Cell* **23**, 600–627.
- Brodrribb TJ. 2009. Xylem hydraulic physiology: the functional backbone of terrestrial plant productivity. *Plant Science* **177**, 245–251.
- Brodrribb TJ, Holbrook NM. 2003. Stomatal closure during leaf dehydration, correlation with other leaf physiological traits. *Plant Physiology* **132**, 2166–2173.
- Colebrook EH, Thomas SG, Phillips AL, Hedden P. 2014. The role of gibberellin signalling in plant responses to abiotic stress. *The Journal of Experimental Biology* **217**, 67–75.
- Cutler SR, Rodriguez PL, Finkelstein RR, Abrams SR. 2010. Abscisic acid: emergence of a core signaling network. *Annual Review of Plant Biology* **61**, 651–679.

- Davière JM, Achard P.** 2013. Gibberellin signaling in plants. *Development* **140**, 1147–1151.
- Dayan J, Voronin N, Gong F, Sun TP, Hedden P, Fromm H, Aloni R.** 2012. Leaf-induced gibberellin signaling is essential for internode elongation, cambial activity, and fiber differentiation in tobacco stems. *The Plant Cell* **24**, 66–79.
- Dietrich D.** 2018. Hydrotropism: how roots search for water. *Journal of Experimental Botany* **69**, 2759–2771.
- Geisler M, Nadeau J, Sack FD.** 2000. Oriented asymmetric divisions that generate the stomatal spacing pattern in *Arabidopsis* are disrupted by the *too many mouths* mutation. *The Plant Cell* **12**, 2075–2086.
- Gifford RM, Evans LT.** 1981. Photosynthesis, carbon partitioning and yield. *Annual Review of Plant Physiology* **32**, 485–509.
- Griffiths J, Murase K, Rieu I, et al.** 2006. Genetic characterization and functional analysis of the GID1 gibberellin receptors in *Arabidopsis*. *The Plant Cell* **18**, 3399–3414.
- Gur A, Zamir D.** 2004. Unused natural variation can lift yield barriers in plant breeding. *PLoS Biology* **2**, e245.
- Halperin O, Gebremedhin A, Wallach R, Moshelion M.** 2017. High-throughput physiological phenotyping and screening system for the characterization of plant-environment interactions. *The Plant Journal* **89**, 839–850.
- Harberd NP, Belfield E, Yasumura Y.** 2009. The angiosperm gibberellin-GID1-DELLA growth regulatory mechanism: how an “inhibitor of an inhibitor” enables flexible response to fluctuating environments. *The Plant Cell* **21**, 1328–1339.
- Hauvermale AL, Ariizumi T, Steber CM.** 2012. Gibberellin signaling: a theme and variations on DELLA repression. *Plant Physiology* **160**, 83–92.
- Hedden P.** 2003. The genes of the Green Revolution. *Trends in Genetics* **19**, 5–9.
- Hirano K, Asano K, Tsuji H, Kawamura M, Mori H, Kitano H, Ueguchi-Tanaka M, Matsuoka M.** 2010. Characterization of the molecular mechanism underlying gibberellin perception complex formation in rice. *The Plant Cell* **22**, 2680–2696.
- Hochberg U, Degu A, Gendler T, Fait A, Rachmilevitch S.** 2015. The variability in the xylem architecture of grapevine petiole and its contribution to hydraulic differences. *Functional Plant Biology* **42**, 357–365.
- Illouz-Eliaz N, Ramon U, Shohat H, Blum S, Livne S, Mendelson D, Weiss D.** 2019. Multiple gibberellin receptors contribute to phenotypic stability under changing environments. *The Plant Cell* **31**, 1506–1519.
- Kooyer NJ.** 2015. The evolution of drought escape and avoidance in natural herbaceous populations. *Plant Science* **234**, 155–162.
- Liu Q, Guo X, Chen G, Zhu Z, Yin W, Hu Z.** 2016. Silencing SIGID2, a putative F-box protein gene, generates a dwarf plant and dark-green leaves in tomato. *Plant Physiology and Biochemistry* **109**, 491–501.
- Livne S, Lor VS, Nir I, Eliaz N, Aharoni A, Olszewski NE, Eshed Y, Weiss D.** 2015. Uncovering DELLA-independent gibberellin responses by characterizing new Tomato *procera* mutants. *The Plant Cell* **27**, 1579–1594.
- Locascio A, Blázquez MA, Alabadí D.** 2013. Genomic analysis of DELLA protein activity. *Plant & Cell Physiology* **54**, 1229–1237.
- Magome H, Yamaguchi S, Hanada A, Kamiya Y, Oda K.** 2008. The DDF1 transcriptional activator upregulates expression of a gibberellin-deactivating gene, *GA2ox7*, under high-salinity stress in *Arabidopsis*. *The Plant Journal* **56**, 613–626.
- McCormick S.** 1991. Transformation of tomato with *Agrobacterium tumefaciens*. In: Lincley H, ed. *Plant tissue culture manual*, Dordrecht: Kluwer Academic Publishers, 1–9.
- Melcher PJ, Holbrook NM, Burns MJ, Zwieniecki MA, Cobb AR, Brodribb, TJ, Choat B, Sack L.** 2012. Measurements of stem xylem hydraulic conductivity in the laboratory and field. *Methods in Ecology and Evolution* **3**, 685–694.
- Mittler R, Blumwald E.** 2010. Genetic engineering for modern agriculture: challenges and perspectives. *Annual Review of Plant Biology* **61**, 443–462.
- Nakajima M, Shimada A, Takashi Y, et al.** 2006. Identification and characterization of *Arabidopsis* gibberellin receptors. *The Plant Journal* **46**, 880–889.
- Negin B, Moshelion M.** 2017. The advantages of functional phenotyping in pre-field screening for drought-tolerant crops. *Functional Plant Biology* **44**, 107–118.
- Nir I, Moshelion M, Weiss D.** 2014. The *Arabidopsis* GIBBERELLIN METHYL TRANSFERASE 1 suppresses gibberellin activity, reduces whole-plant transpiration and promotes drought tolerance in transgenic tomato. *Plant, Cell & Environment* **37**, 113–123.
- Nir I, Shohat H, Panizel I, Olszewski N, Aharoni A, Weiss D.** 2017. The tomato DELLA protein PROCERA acts in guard cells to promote stomatal closure. *The Plant Cell* **29**, 3186–3197.
- Omena-Garcia R, Martins A, Medeiros D, Vallarino J, Ribeiro D, Fernie A, Araujo W, Nunes-Nesi A.** 2019. Growth and metabolic adjustments in response to gibberellin deficiency in drought stressed tomato plants. *Environmental Experimental Botany* **159**, 95–107.
- Osakabe Y, Osakabe K, Shinozaki K, Tran LS.** 2014. Response of plants to water stress. *Frontiers in Plant Science* **5**, 86.
- Pal S, Zhao J, Khan A, Yadav NS, Batushansky A, Barak S, Rewald B, Fait A, Lazarovitch N, Rachmilevitch S.** 2016. Paclobutrazol induces tolerance in tomato to deficit irrigation through diversified effects on plant morphology, physiology and metabolism. *Scientific Reports* **6**, 39321.
- Plaza-Wüthrich S, Blösch R, Rindisbacher A, Cannarozzi G, Tadele Z.** 2016. Gibberellin deficiency confers both lodging and drought tolerance in small cereals. *Frontiers in Plant Science* **7**, 643.
- Pradhan Mitra P, Loqué D.** 2014. Histochemical staining of *Arabidopsis thaliana* secondary cell wall elements. *Journal of Visualized Experiments* **87**, e51381.
- Ragni L, Nieminen K, Pacheco-Villalobos D, Sibout R, Schwechheimer C, Hardtke CS.** 2011. Mobile gibberellin directly stimulates *Arabidopsis* hypocotyl xylem expansion. *The Plant Cell* **23**, 1322–1336.
- Sade N, Vinocur BJ, Diber A, Shatil A, Ronen G, Nissan H, Wallach R, Karchi H, Moshelion M.** 2009. Improving plant stress tolerance and yield production: is the tonoplast aquaporin S TIP2;2 a key to isohydric to anisohydric conversion? *New Phytologist* **181**, 651–661.
- Skirycaz A, Inzé D.** 2010. More from less: plant growth under limited water. *Current Opinion in Biotechnology* **21**, 197–203.
- Tuna AL, Kaya C, Dikilitas M, Higgs D.** 2008. The combined effects of gibberellic acid and salinity on some antioxidant enzyme activities, plant growth parameters and nutritional status in maize plants. *Environmental and Experimental Botany* **62**, 1–9.
- Tyree MT, Ewers FW.** 1991. The hydraulic architecture of trees and other woody plants. *New Phytologist* **119**, 345–360.
- Ueguchi-Tanaka M, Ashikari M, Nakajima M, et al.** 2005. GIBBERELLIN INSENSITIVE DWARF1 encodes a soluble receptor for gibberellin. *Nature* **437**, 693–698.
- Wang C, Yang A, Yin H, Zhang J.** 2008. Influence of water stress on endogenous hormone contents and cell damage of maize seedlings. *Journal of Integrative Plant Biology* **50**, 427–434.
- Wang RS, Pandey S, Li S, Gookin TE, Zhao Z, Albert R, Assmann SM.** 2011. Common and unique elements of the ABA-regulated transcriptome of *Arabidopsis* guard cells. *BMC Genomics* **12**, 216.
- Weber E, Engler C, Gruetzner R, Werner S, Marillonnet S.** 2011. A modular cloning system for standardized assembly of multigene constructs. *PLoS One* **6**, e16765.