

# The Netherlands eScience Center

Yifat Dzigan – Environment and Sustainability

netherlands  
eScience center

November 17th 2022

Use digital technologies  
to advance science and  
support societal change

# The Netherlands eScience Center

National centre /  
independent foundation  
since 2012 /  
NWO & SURF



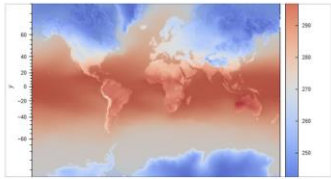




# Collaborative projects

- Driven by research questions
- We apply state-of-the-art digital solutions
- We develop reusable & open software, data and knowledge
- Open Science to advance academic research!





### Plotting gridded data on a web map: Python and/or Javascript?

Interactive web graphics are transforming science communication. They are engaging, comprehensive, and easy to share. And while great...



Peter Kalverla  
Sep 16 · 10 min read

The screenshot shows a web browser window with the URL `carpentries-incubator.github.io/lesson-parallel-python/`. The page header indicates it is a beta version. The main content is titled "Parallel Programming in Python" and discusses the language's use in scientific data analysis and visualization. It includes a "Prerequisites" section stating the course is for graduate students and researchers.

CFF INIT

### Generate your citation metadata files with ease

CITATION.cff files are plain text files with human- and machine-readable citation information for software and datasets.



# Building digital expertise in the scientific community



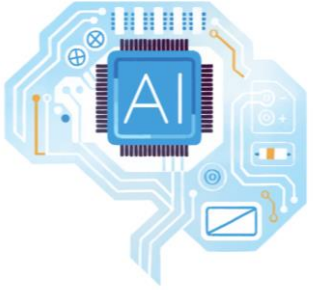
Photo by DASHA SHCHUKOVA on Unsplash



# Research Software Engineers - RSEs



# Our Technological Expertise



**Artificial intelligence**



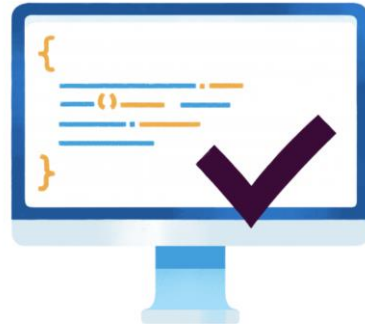
**Analytics**



**Data processing**



**Computing**



**Software quality**



# Showing the impact of research software

The **Research Software Directory** is designed to show the impact research software has on research and society. We stimulate the reuse of research software and encourage proper citation of research software to ensure researchers and RSEs get credit for their work.

RS



**Research  
Software  
Directory**

<https://research-software-directory.org/>



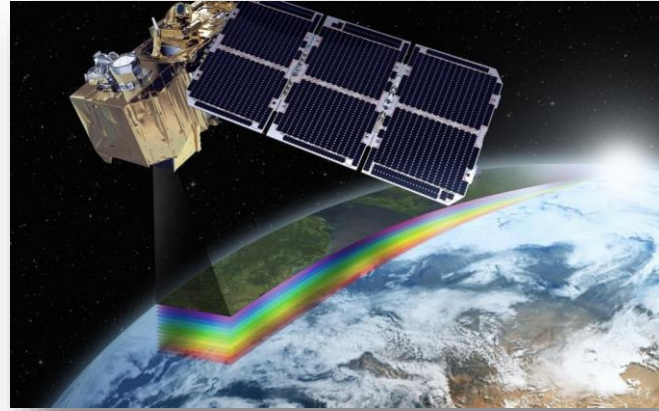
# Environment & Sustainability in the Netherlands eScience Center

netherlands  
eScience center



# Domain focus 2023

## CLIMATE RESEARCH



## REMOTE SENSING

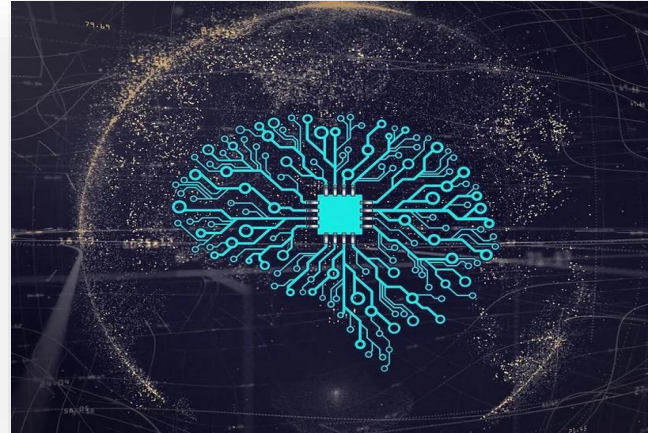
## GEOHEALTH



A woman with dark hair, wearing a yellow sweater, is shown in profile, looking upwards and to the left. She is holding a tablet in her left hand and pointing with her right hand towards a large, glowing globe. The globe is surrounded by various digital data visualizations, including line graphs, bar charts, and circular gauges, all rendered in a blue and green color scheme. The background is dark with faint grid lines and additional data elements, creating a futuristic, high-tech atmosphere.

# Technological focus 2023

## DIGITAL TWINS



## ML FOR GEOSCIENCES

## GREEN COMPUTING



An illustration depicting the concept of dissemination. It features a large green megaphone in the center. To the left, a woman in a yellow shirt and blue pants stands with her arm raised, next to a man in a red shirt sitting at a laptop. To the right, a man in a blue shirt and dark pants stands near a large yellow calculator. The background includes blue speech bubbles, a red paper airplane, and various decorative elements like plants and wavy lines. The word "Dissemination" is written in white text across the center.

# Dissemination


# Let's stay in touch

# Apply for eScience open call

<https://www.esciencecenter.nl/calls-for-proposals/>

 [www.esciencecenter.nl](http://www.esciencecenter.nl)

 [y.dzigan@esciencecenter.com](mailto:y.dzigan@esciencecenter.com)

 +31 (0)20 460 4770