



What the EOSC Science Cluster Funding changed for ENVRI

Andreas Petzold ⁽¹⁾ and Anca Hienola ⁽²⁾

Forschungszentrum Jülich GmbH, Jülich, Germany; (2) Finnish Meteorological Institute, Helsinki, Finland

Contact: a.petzold@fz-juelich.de



ENVRI-FAIR has received funding from the European Union's Horizon 2020 research and innovation programme under grant agreement No 824068



Key Features of Environmental Research Infrastructures

**Interdisciplinarity
highly relevant**

**Specialized observation
and analysis platforms**

**Societal challenges need
multidisciplinary methods**

**High importance to
society, economy and
resilience**

**High level of specialization
requires RI to concentrate on
their main tasks and user
communities**

Life

Air

Answering
societal needs
is only possible
via collaboration

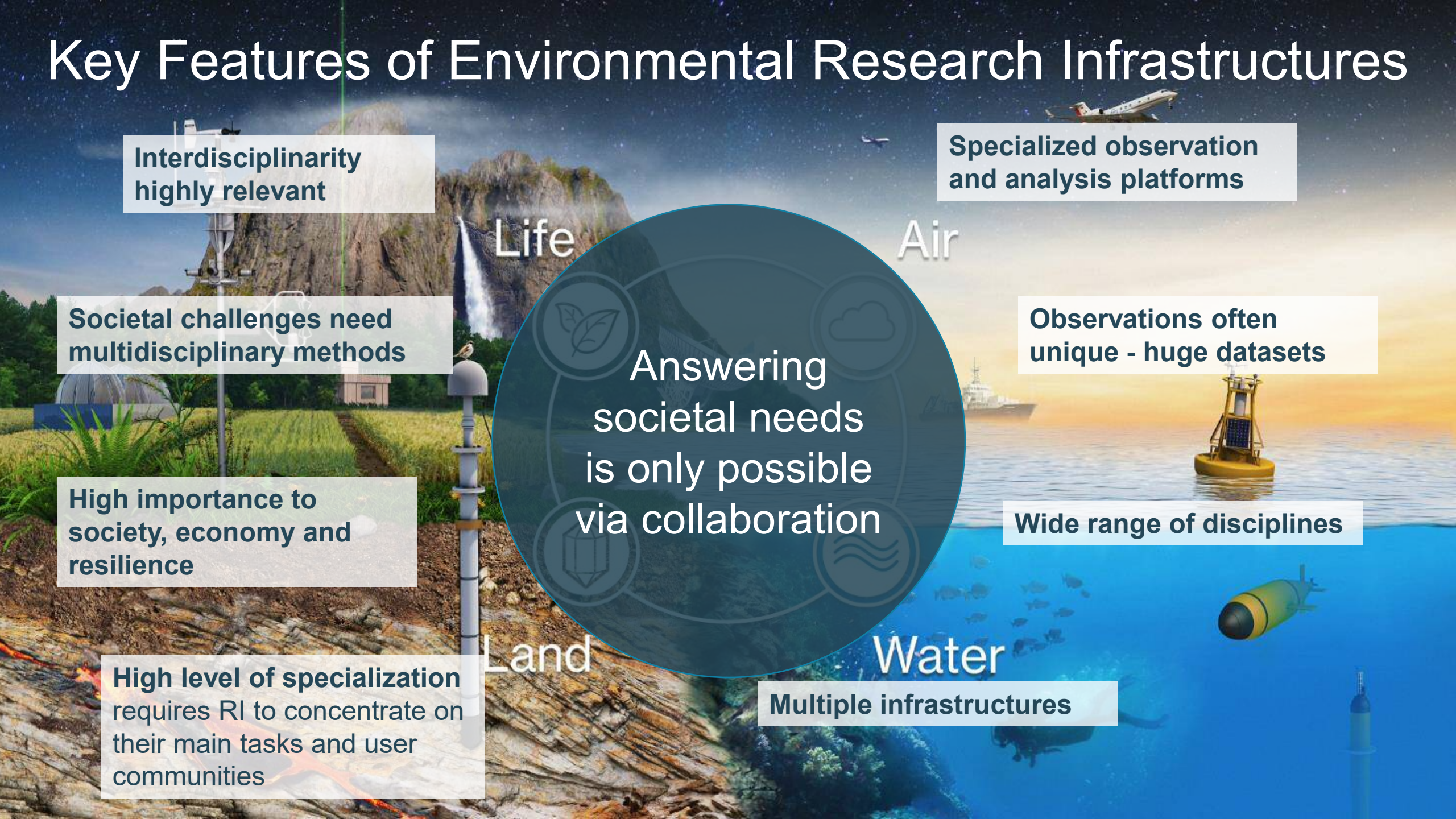
**Observations often
unique - huge datasets**

Wide range of disciplines

Land

Water

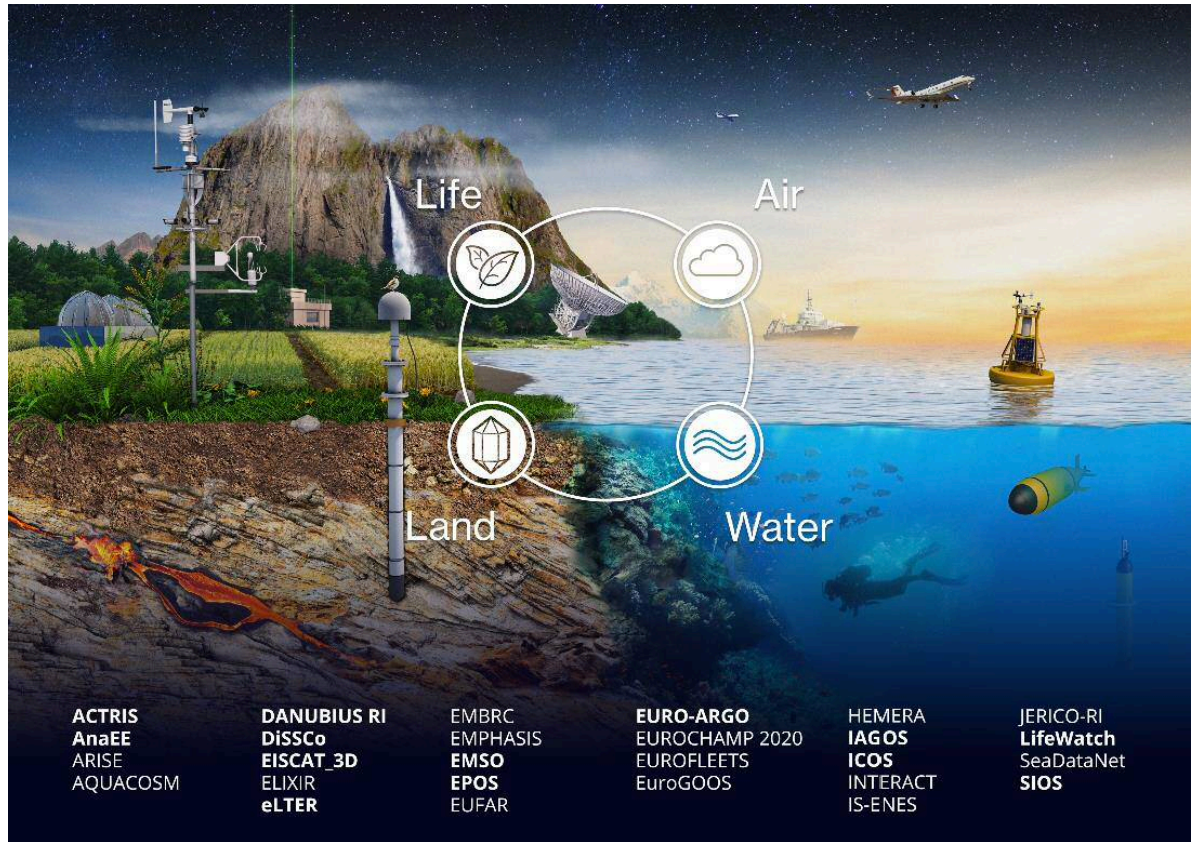
Multiple infrastructures





Who We Are

ESFRI Cluster of Environmental Research Infrastructures



Environmental Research Infrastructures

- provide data and research products from all four sub-domains of the Earth system
- data are crucial European contributions to global-scale monitoring of the state of the Earth
- data are vital for assessing past and defining future policies, and for the development of environment-friendly innovations
- provide research data and services at EOSC through the ENVRI-Hub



The ENVRI Landscape in approximate numbers

7 operational RIs
12 data portals
 300 asset suppliers
 10,000 researchers



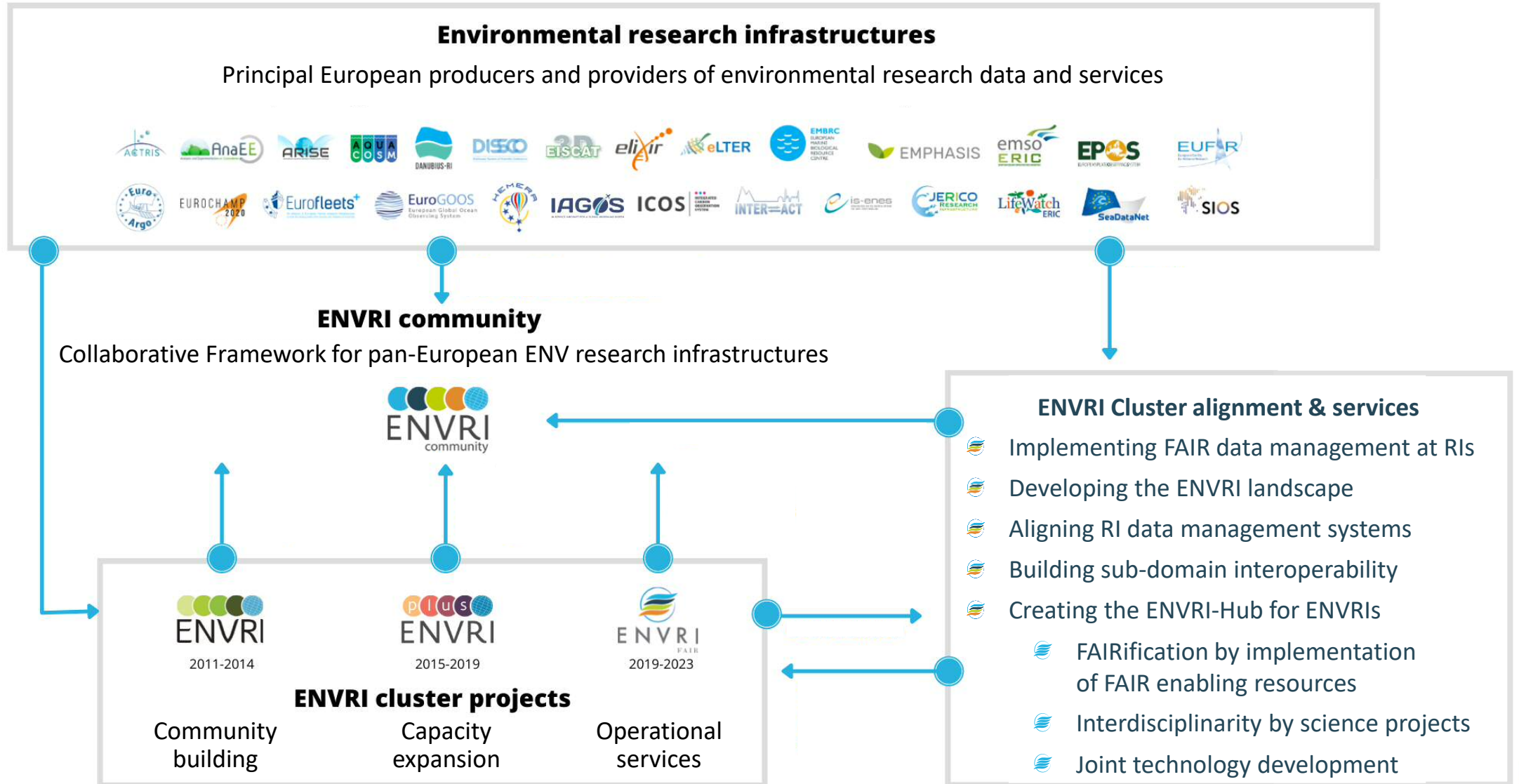
5 operational RIs
12 data portals
 300 asset suppliers
 19,000 researchers

2 operational RIs
10 data portals
 250 asset suppliers
 10,000 researchers

5 operational RIs
5 data portals
 4000 asset suppliers
 (institutions@SeaDataNet)
 20,000 researchers



Developing the ENVRI Community





Target Groups for ENVRI Products and Services



Scientific Communities

Domain-scientists access ENVRI services directly via RI portals or APIs
Cross RI / subdomain access via ENVRI-Hub

Research Infrastructures

RIs share knowledge and training resources across scientific domains and foster evolution of RIs

 **eosc**

EOSC users access ENVRI service ecosystem through the platform ENVRI-Hub guided by rich metadata

eosc

Improved FAIRness &
ENVRI-Hub

FAIR services for research,
innovation & society

Implementation
process

Implementation
plans

COVID
19

Gap & Landscape Analysis
/ FAIR assessment

The ENVRI Journey to FAIRness is not over yet



ENVRI
FAIR

Thanks



envri.eu/envri-fair



[@envri_fair](https://twitter.com/envri_fair)



company/envri-fair



facebook.com/ENVRIcomm