



The Unix Shell

The Secure Shell



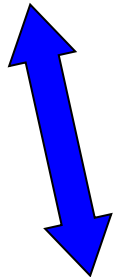
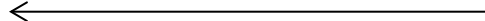
Copyright © Software Carpentry 2011

This work is licensed under the Creative Commons Attribution License

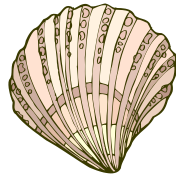
See <http://software-carpentry.org/license.html> for more information.



```
$ pwd
```

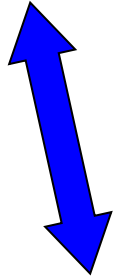


shell

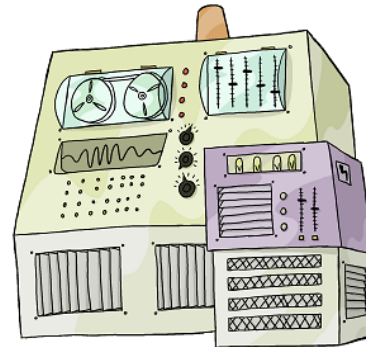
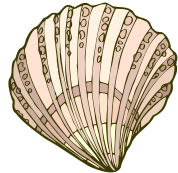




```
$ pwd  
  
/users/vlad  
  
$
```



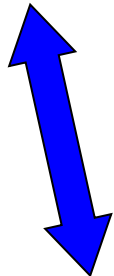
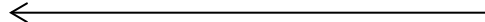
shell



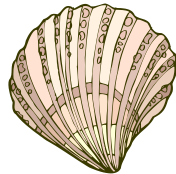


login as: vlad

Password: ****

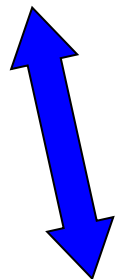


shell

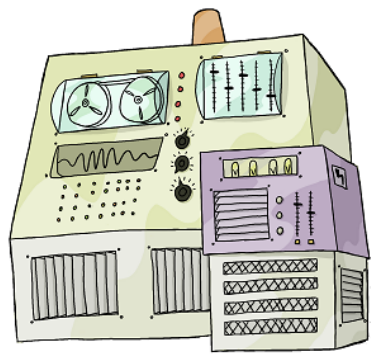
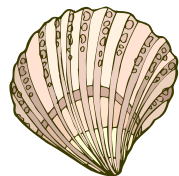




```
login as: vlad  
Password: ****  
$
```

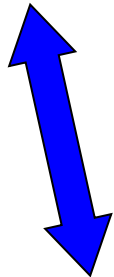


shell

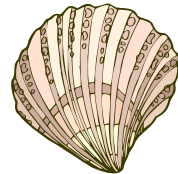
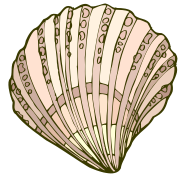




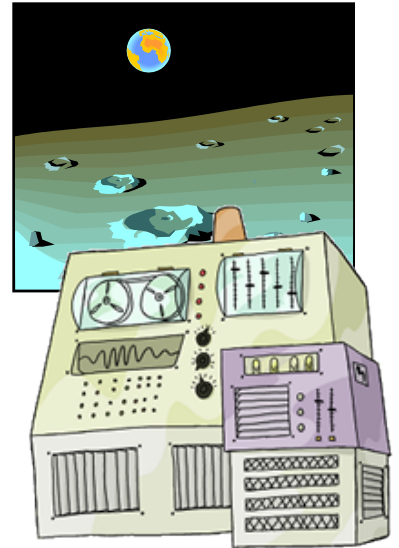
```
login as: vlad  
Password: *****  
moon>
```



shell

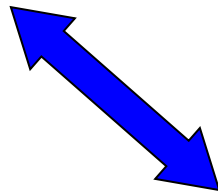
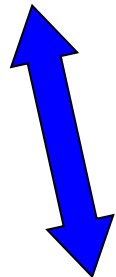


remote shell

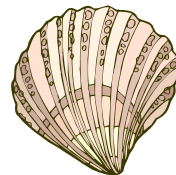
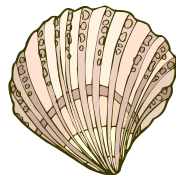




```
login as: vlad  
Password: *****  
moon>
```



shell



remote shell



```
$ pwd
```

```
/users/vlad
```

```
$ ssh vlad@moon
```

```
Password:
```




```
$ pwd
```

```
/users/vlad
```

```
$ ssh vlad@moon
```

```
Password: ***
```

```
Access denied
```

```
Password:
```



```
$ pwd
```

```
/users/vlad
```

```
$ ssh vlad@moon
```

```
Password: ***
```

```
Access denied
```

```
Password: ****
```

```
moon> pwd
```

```
/home/vlad
```

```
moon> ls -F
```

```
bin/          cheese.txt    dark_side/    rocks.cfg
```



```
$ pwd
```

```
/users/vlad
```

```
$ ssh vlad@moon
```

```
Password: ***
```

```
Access denied
```

```
Password: *****
```

```
moon> pwd
```

```
/home/vlad
```

```
moon> ls -F
```

```
bin/          cheese.txt    dark_side/   rocks.cfg
```

```
moon> exit
```

```
$ pwd
```

```
/users/vlad
```



```
$ ssh vlad@moon
```

```
Password: ****
```

```
moon> pwd
```

```
/home/vlad
```

```
moon> ls -F
```

```
bin/          cheese.txt    dark_side/    rocks.cfg
```

```
moon> exit
```

```
$ pwd
```

```
/users/vlad
```

```
$ ls -F
```

```
bin/          data/         mail/         music/
notes.txt     papers/       pizza.cfg     solar/
solar.pdf     swc/
```



```
$ scp vlad@moon:/home/vlad/cheese.txt  
      vlad@earth:/users/vlad
```

source file...

A blue curved arrow originates from the text 'source file...' and points to the source file path 'vlad@moon:/home/vlad/cheese.txt' in the command above.



```
$ scp vlad@moon:/home/vlad/cheese.txt  
    vlad@earth:/users/vlad
```

source file...

...to destination directory



```
$ scp vlad@moon:/home/vlad/cheese.txt  
    vlad@earth:/users/vlad
```

source file...

...to destination directory

source and destination are written as

user@computer:path



```
$ scp vlad@moon:/home/vlad/cheese.txt  
    vlad@earth:/users/vlad
```

```
Password:  *****
```

```
cheese.txt                100%  9  1.0 KB/s  00:00
```




```
$ scp vlad@moon:/home/vlad/cheese.txt  
    vlad@earth:/users/vlad
```

```
$ scp -r vlad@moon:/home/vlad/dark_side  
    vlad@earth:/users/vlad
```

-r indicates a directory and its contents



```
$ scp -r vlad@moon:/home/vlad/dark_side  
      vlad@earth:/users/vlad
```

```
$ scp -r vlad@moon:/home/vlad/dark_side  
      /users/vlad
```

```
$ pwd  
/users/vlad
```

```
$ scp -r vlad@moon:/home/vlad/dark_side  
      .
```

same destination path





```
$ ssh vlad@moon
```

```
Password: ****
```

```
moon> df -h
```

<i>Filesystem</i>	<i>Size</i>	<i>Used</i>	<i>Avail</i>	<i>Use%</i>	<i>Mounted</i>	<i>On</i>
<i>/dev/sda1</i>	<i>7.9G</i>	<i>2.1G</i>	<i>5.5G</i>	<i>28%</i>	<i>/</i>	<i></i>
<i>/dev/sda2</i>	<i>791G</i>	<i>150G</i>	<i>642G</i>	<i>19%</i>	<i>/home</i>	<i></i>

```
moon> df -h > usage.txt
```

```
moon> exit
```

```
$ scp vlad@moon:/home/vlad/usage.txt .
```

```
Password: ****
```

```
usage.txt          100% 134 1.0 KB/s 00:0
```



```
$ ssh vlad@moon 'df -h'
```

```
Password: *****
```

<i>Filesystem</i>	<i>Size</i>	<i>Used</i>	<i>Avail</i>	<i>Use%</i>	<i>Mounted</i>	<i>On</i>
<i>/dev/sda1</i>	<i>7.9G</i>	<i>2.1G</i>	<i>5.5G</i>	<i>28%</i>	<i>/</i>	
<i>/dev/sda2</i>	<i>791G</i>	<i>150G</i>	<i>642G</i>	<i>19%</i>	<i>/home</i>	



```
$ ssh vlad@moon 'df -h'
```

```
Password: ****
```

Filesystem	Size	Used	Avail	Use%	Mounted
/dev/sda1	7.9G	2.1G	5.5G	28%	/
/dev/sda2	791G	150G	642G	19%	/home

```
$ ssh vlad@moon 'df -h' >> usage.log
```

```
Password: ****
```

```
$ ls -F
```

bin/	data/	mail/	music/
notes.txt	papers/	usage.log	usage.txt
solar.pdf	swc/		

same result



character stream



```
$ echo "open sesame, please" | ssh  
  vlad@moon 'cat > magic.txt'
```

```
Password: ****
```



character stream

remote shell receives stream from pipe

```
$ echo "open sesame, please" | ssh  
vlad@moon 'cat > magic.txt'  
Password: *****
```

remote command receives input piped to ssh
cat repeats input stream as output

redirection within remote shell



```
$ ssh vlad@moon 'ls -F /home/vlad'
```

```
Password: ****
```

```
bin/      cheese.txt    dark_side/  rocks.cfg
```

```
$ echo "open sesame, please" | ssh  
    vlad@moon 'cat > magic.txt'
```

```
Password: ****
```

```
$ ssh vlad@moon 'ls -F /home/vlad'
```

```
Password: ****
```

```
bin/      cheese.txt    dark_side/  magic.txt  
rocks.cfg
```

before

after





```
$ ssh vlad@moon 'ls -F /home/vlad'
```

```
Password: ****
```

```
bin/      cheese.txt    dark_side/  rocks.cfg
```

```
$ echo "open sesame, please" | ssh  
    vlad@moon 'cat > magic.txt'
```

```
Password: ****
```

```
$ ssh vlad@moon 'ls -F /home/vlad'
```

```
Password: ****
```

```
bin/      cheese.txt    dark_side/  magic.txt
```

```
rocks.cfg
```

```
$ scp vlad@moon:/home/vlad/magic.txt .
```

```
Password: ****
```

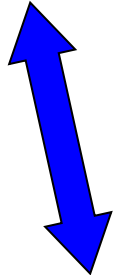
before

after

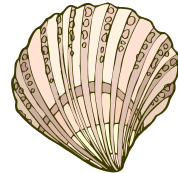
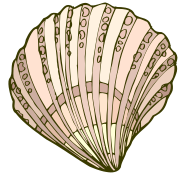




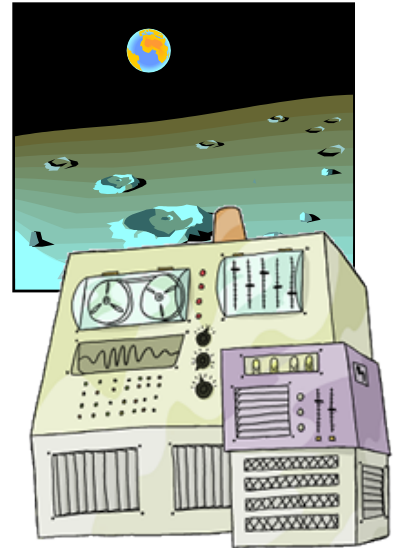
```
login as: vlad  
Password: *****)
```



shell

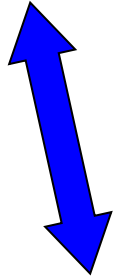


remote shell

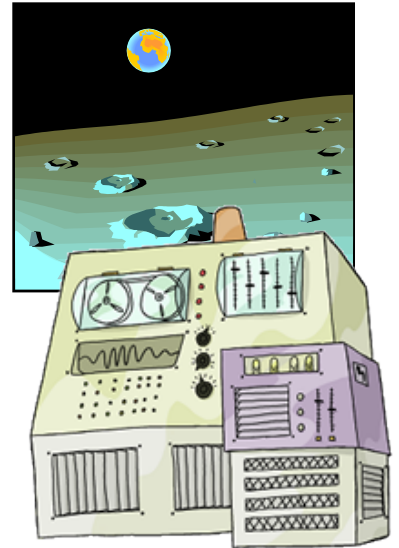
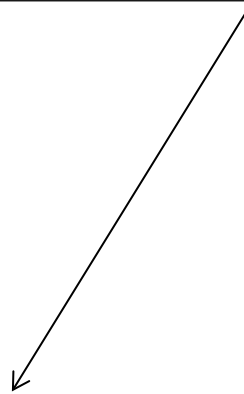
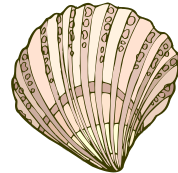
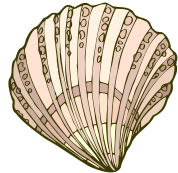




```
login as: vlad  
Password: thriller
```



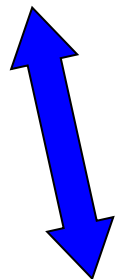
shell



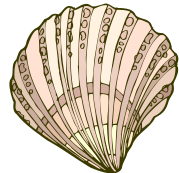
remote shell



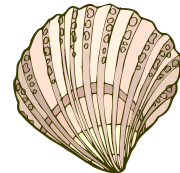
```
login as: vlad  
Password: thriller
```

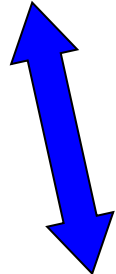


shell

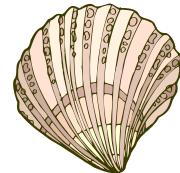
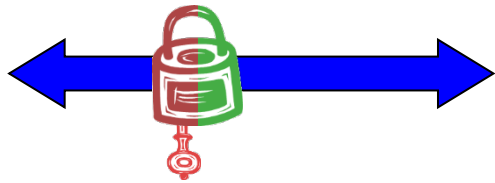
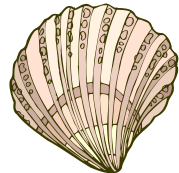


remote shell

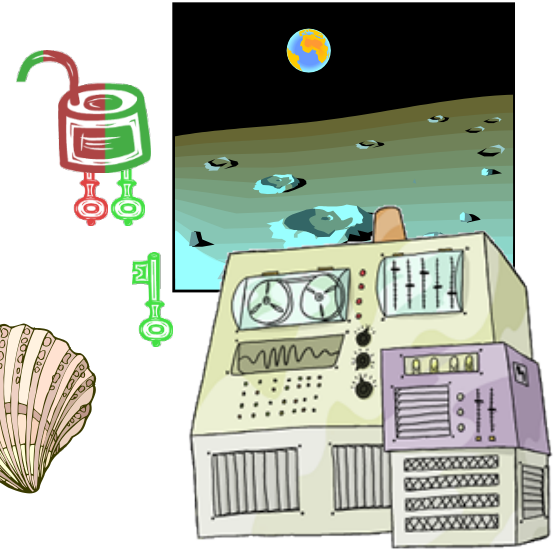


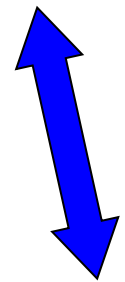
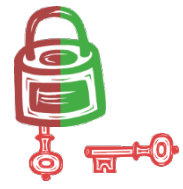


shell

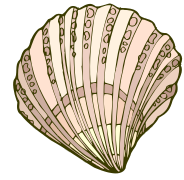
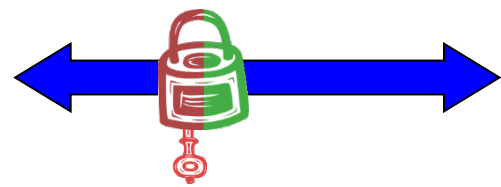
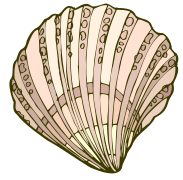


remote shell

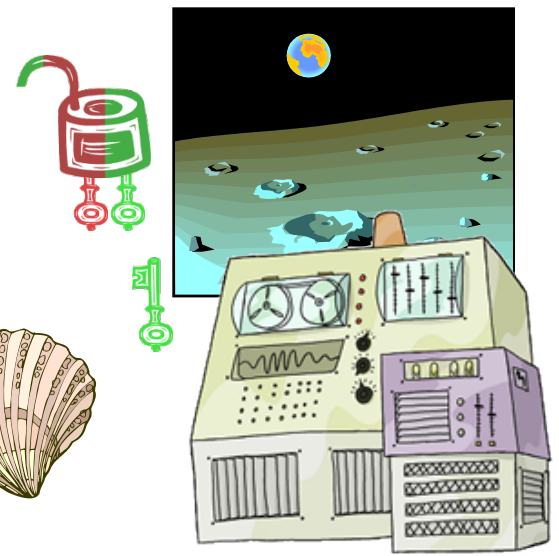


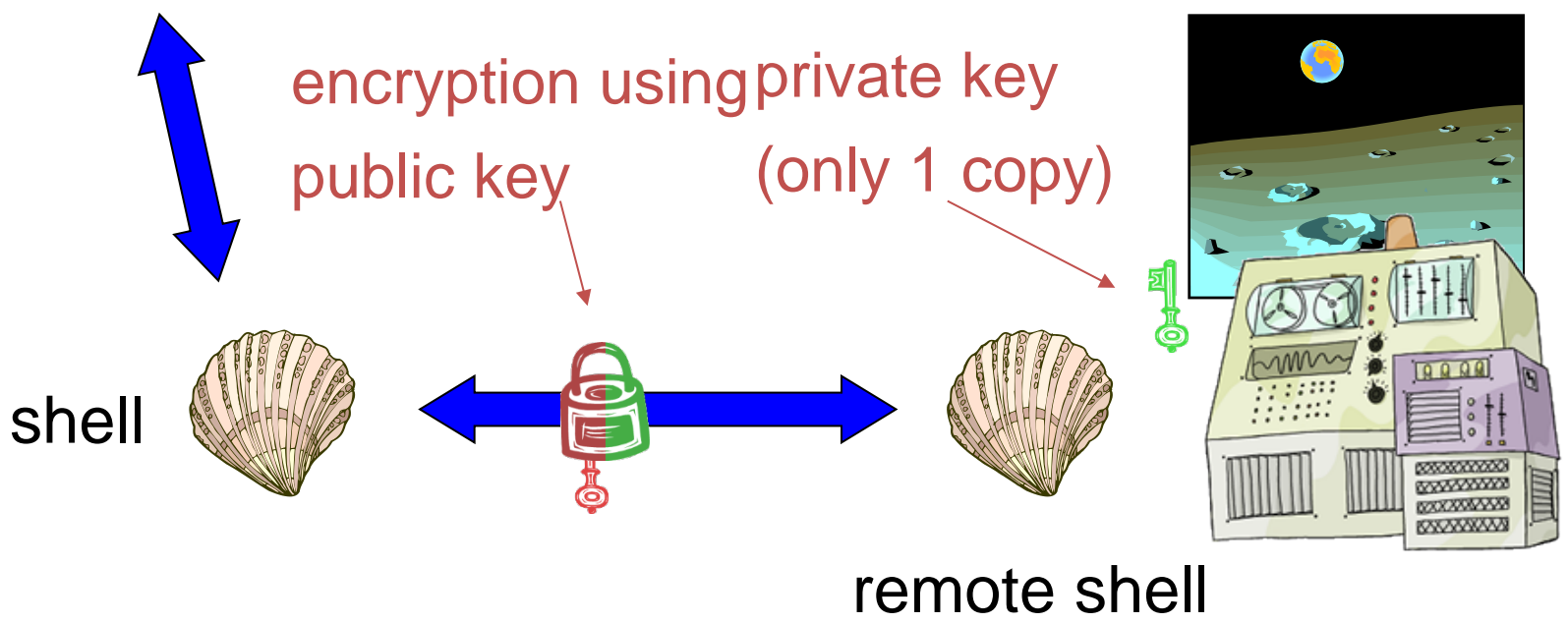
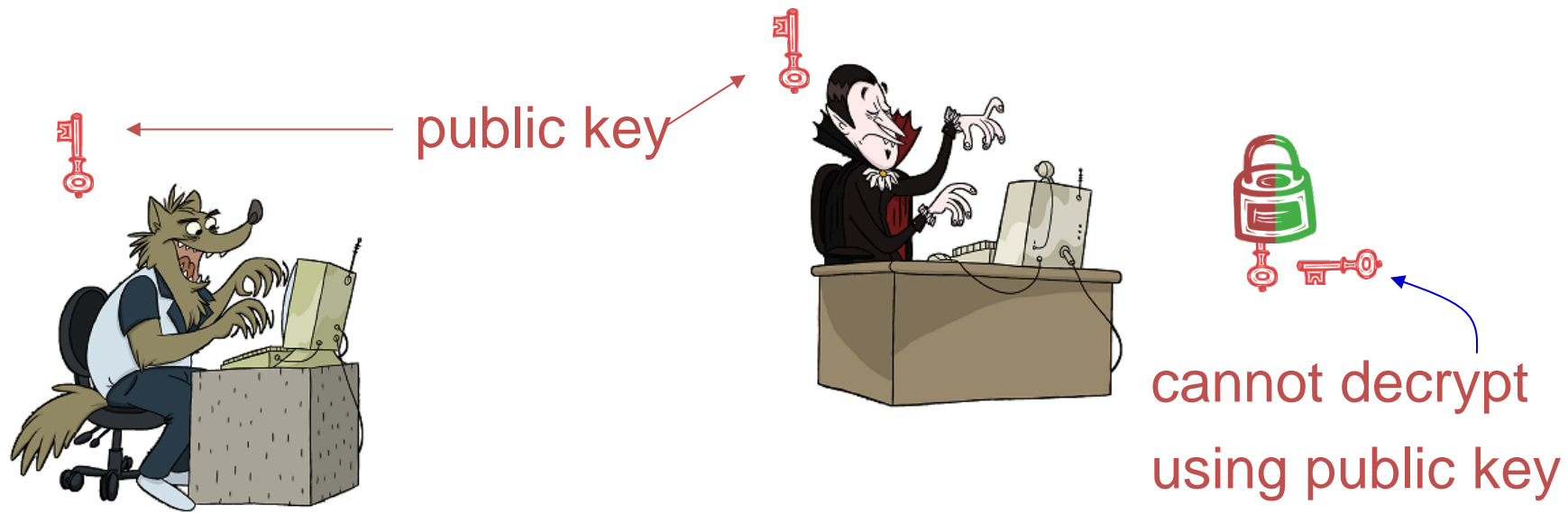


shell



remote shell



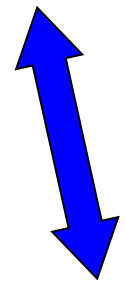
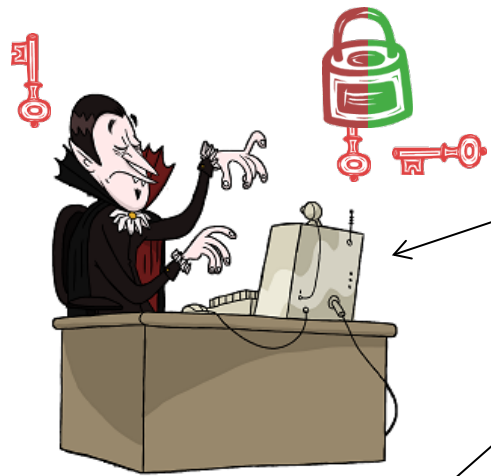




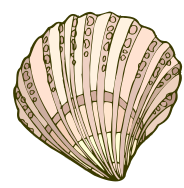
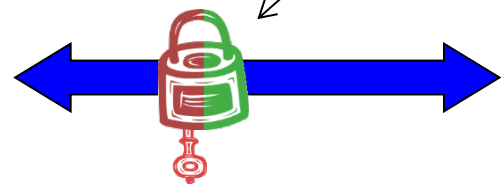
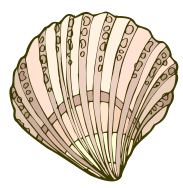
```
login as: vlad
Password: *****
```



```
huxyo ew: xdvw
uqfcmjbn: lhiujdbj
```



shell



remote shell





```
$ ssh vlad@moon
```

```
The authenticity of host 'moon (10.1.2.3)'  
can't be established.
```

```
RSA key fingerprint is
```

```
f1:68:f5:90:47:dc:a8:e9:62:df:c9:21:f0:8b:c5:3
```

```
Are you sure you want to continue connecting  
(yes/no)? yes
```

```
Warning: Permanently added 'moon,10.1.2.3' (RSA  
to the list of known hosts.
```

```
Password: ****
```

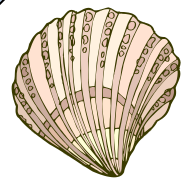
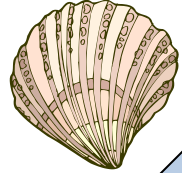
```
moon>
```



encryption using public keys



Send message to moon locked with moon's public key
(Only readable by moon)



Send message to Vlad locked with Vlad's public key
(Only readable by Vlad)



private key
(only 1 copy)

private key
(only 1 copy)





created by

Elango Cheran

February 2011



Copyright © Software Carpentry 2011

This work is licensed under the Creative Commons Attribution License

See <http://software-carpentry.org/license.html> for more information.