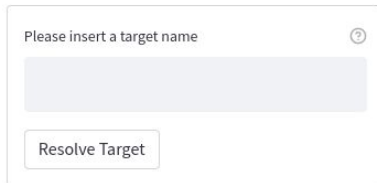


Get a quick look at our
page

www.tessextractor.app

Search, download and process
the TESS data of any target
you desire in a simple interface
app.



Please insert a target name ?

Resolve Target

Explore the intrinsic variability
of astronomical objects
catalogued at the SIMBAD
portal.



Need assistance? Please
email

support@tessextractor.app

Any question or suggestion please
contact us.


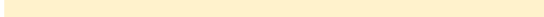
Javier Serna jserna@astro.unam.mx Jesús Hernández
hernandj@astro.unam.mx

TESS Extractor 


Quickviewer app

**A user-friendly web
application to visualize
TESS light curves**



Check online the time series of a diverse astrophysical phenomena (e.g., Pulsations, transits, rotation, flares, YSO, etc.)



Services

Light Curve Search

- Make a simple aperture photometry extraction.
- Display an Interactive light curve viewer.
- Check available TESS sectors.
- Download the result time series in ASCII format.
- Get a periodogram viewer to investigate periods of the signals.

✂ Systematics Correction

- Fix the light curves of systematic effects by using the cotrending basis vectors.
- Define a photometric aperture, sky annulus and cutout size.
- Display the first image of the TESS cutout. Also, display an alternative image from DSS of the same field of view as TESS.

Photometry Settings

Define a FFI cutout size ⊙

10 ▼

Select a pixel range for the sky annulus

2.5 3.5

2.5 10.0

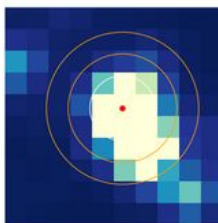
Select a radius in pixels for the aperture

1.50

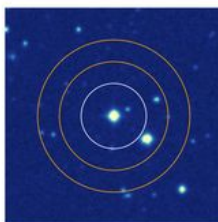
1.00 2.50

Update

Check if photometric aperture contains most of the your target flux and/or if they are contaminated by neighbours.



TESS thumbnail (21arc~1px).
White circle (photometric aperture) and the orange circle (annulus).



DSS cutout of the same area as a comparative thumbnail of TESS cutout (1arc~1px)

🗄 Bulk Search

- Search and process up to 1 MB list of objects at the web application.
- Get ascii files to make independent scientific analyses.

Bulk Search

📁 Drag and drop file here
Limit 1MB per file

Browse files