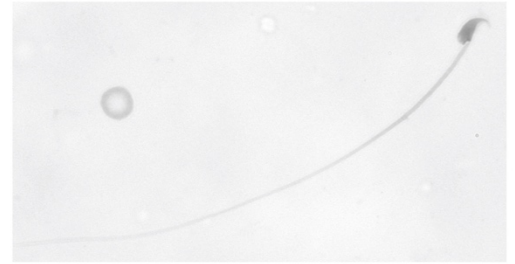
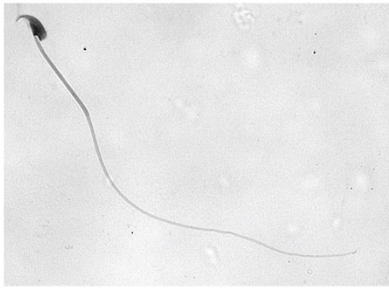


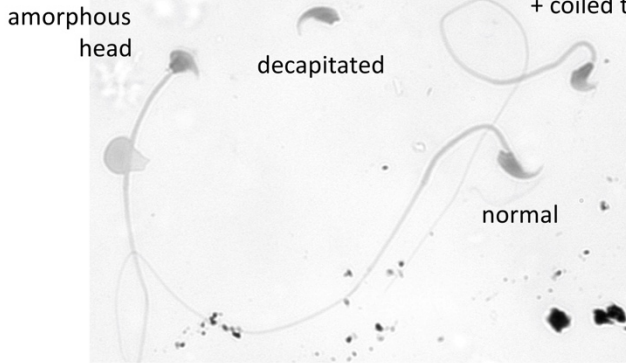
**Supplementary File 7:** Detailed parameters of mouse sperm morphology. Statistically significant values:  $p < 0.05$ ; ns – statistically not significant ( $p \geq 0.05$ ). For samples with normal distribution (positive Shapiro-Wilk normality test), t-test with Welch's correction was applied; for samples without normal distribution (midpiece and tail defects), Kolmogorov-Smirnoff test was applied (GraphPad Prism v. 7.0e).  $n=200$  spermatozoa were analyzed per each mouse; for WT and *Tcte1*<sup>-/-</sup>  $n=5$  animals were evaluated, while for *Tcte1*<sup>+/-</sup> the number of animals was  $n=7$ . Spermatozoa stained with the classic Papanicolaou staining procedure. Bright field microscope: Leica DM5500, magnification 630x (with immersion), software: CytoVision.

sperm morphology	genotype	% [mean ± SD]	p value			
			<i>Tcte1</i> <sup>-/-</sup> vs. <i>Tcte</i> <sup>+/-</sup>	<i>Tcte1</i> <sup>-/-</sup> vs. WT	<i>Tcte1</i> <sup>+/-</sup> vs. WT	
normal	<i>Tcte1</i> <sup>-/-</sup>	35.41 ± 9.10	< 0.0001	0.0009	ns	
	<i>Tcte</i> <sup>+/-</sup>	71.94 ± 8.97				
	WT	70.81 ± 11.78				
abnormal	<b>head defects:</b>					
	sum	<i>Tcte1</i> <sup>-/-</sup>	95.08 ± 2.49	0.0163	ns	ns
		<i>Tcte</i> <sup>+/-</sup>	65.83 ± 23.60			
		WT	84.33 ± 11.89			
	hook less	<i>Tcte1</i> <sup>-/-</sup>	1.30 ± 1.72	ns	ns	ns
		<i>Tcte</i> <sup>+/-</sup>	3.07 ± 4.21			
		WT	2.81 ± 2.68			
	big size	<i>Tcte1</i> <sup>-/-</sup>	1.65 ± 1.22	ns	ns	ns
		<i>Tcte</i> <sup>+/-</sup>	3.03 ± 2.95			
		WT	0.71 ± 1.60			
	small size	<i>Tcte1</i> <sup>-/-</sup>	0.36 ± 0.81	ns	ns	ns
		<i>Tcte</i> <sup>+/-</sup>	0			
		WT	0			
	amorphous	<i>Tcte1</i> <sup>-/-</sup>	26.11 ± 6.35	ns	0.0011	0.0314
		<i>Tcte</i> <sup>+/-</sup>	33.72 ± 13.00			
		WT	48.88 ± 7.83			
	banana shaped	<i>Tcte1</i> <sup>-/-</sup>	13.11 ± 9.30	ns	ns	ns
		<i>Tcte</i> <sup>+/-</sup>	6.85 ± 7.16			
		WT	8.59 ± 5.05			
	decapitated	<i>Tcte1</i> <sup>-/-</sup>	52.55 ± 14.24	0.0039	0.0073	ns
		<i>Tcte</i> <sup>+/-</sup>	19.16 ± 9.33			
		WT	23.33 ± 10.79			
	<b>midpiece defects:</b>					
	sum	<i>Tcte1</i> <sup>-/-</sup>	0.38 ± 0.55	0.0417	0.0079	ns
		<i>Tcte</i> <sup>+/-</sup>	9.71 ± 12.64			
		WT	8.20 ± 11.42			
	thin	<i>Tcte1</i> <sup>-/-</sup>	0.38 ± 0.55	ns	ns	ns
		<i>Tcte</i> <sup>+/-</sup>	0			
		WT	0.87 ± 1.27			
	folded	<i>Tcte1</i> <sup>-/-</sup>	0	0.0366	0.0476	ns
		<i>Tcte</i> <sup>+/-</sup>	9.71 ± 12.64			
		WT	7.33 ± 11.98			
	<b>tail defects:</b>					
	sum	<i>Tcte1</i> <sup>-/-</sup>	4.54 ± 2.79	0.0006	ns	0.0006
		<i>Tcte</i> <sup>+/-</sup>	24.46 ± 24.65			
		WT	7.47 ± 4.06			
	short	<i>Tcte1</i> <sup>-/-</sup>	0	ns	ns	ns
		<i>Tcte</i> <sup>+/-</sup>	0.18 ± 0.47			
		WT	0.26 ± 0.59			
	folded	<i>Tcte1</i> <sup>-/-</sup>	0	ns	ns	ns
		<i>Tcte</i> <sup>+/-</sup>	0.18 ± 0.47			
		WT	1.93 ± 3.23			
coiled	<i>Tcte1</i> <sup>-/-</sup>	4.54 ± 2.79	0.0008	ns	0.0005	
	<i>Tcte</i> <sup>+/-</sup>	23.94 ± 25.12				
	WT	5.33 ± 2.43				
double	<i>Tcte1</i> <sup>-/-</sup>	0	ns	ns	ns	
	<i>Tcte</i> <sup>+/-</sup>	0.17 ± 0.45				
	WT	0				

**NORMAL SPERMATOZOA**

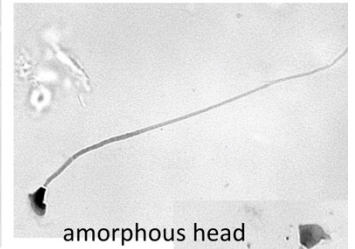
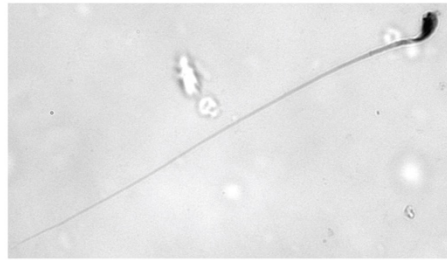


**ABNORMAL SPERM MORPHOLOGY**



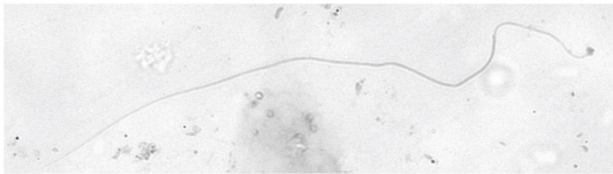
amorphous head + coiled tail

hook less head

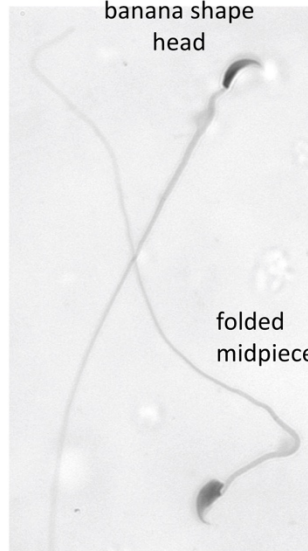


amorphous head

small head + thin midpiece

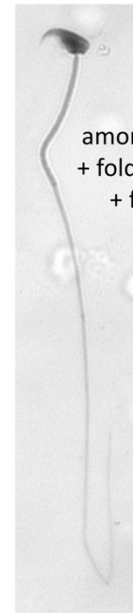


banana shape head

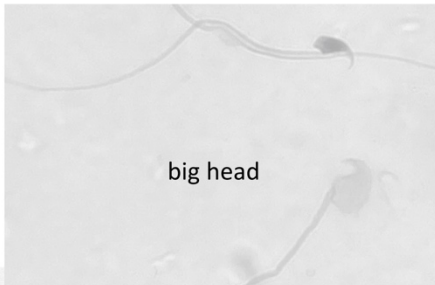


folded midpiece

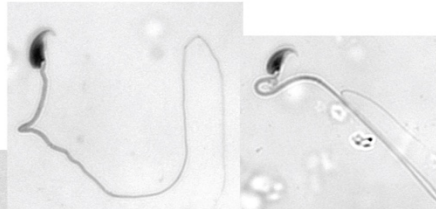
amorphous head + folded midpiece + folded tail



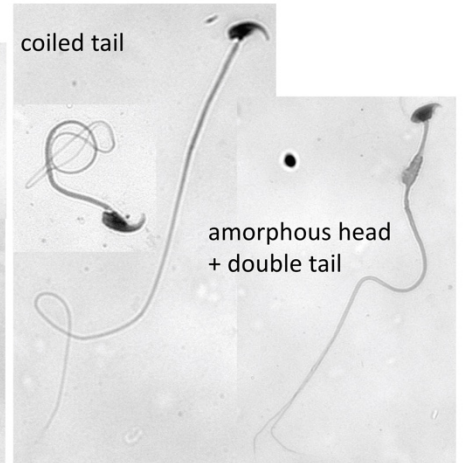
big head



folded midpiece + folded tail

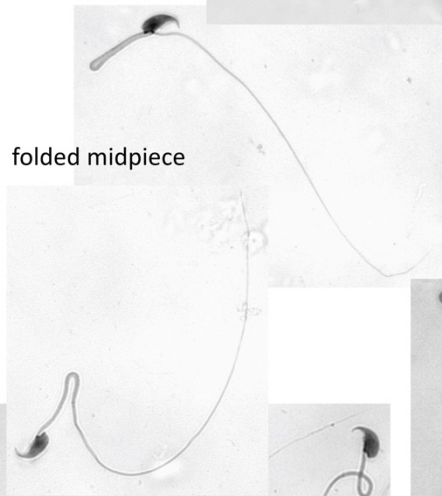


coiled tail

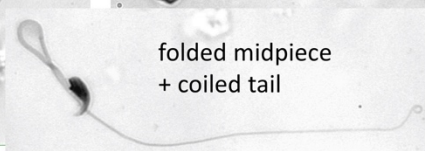


amorphous head + double tail

folded midpiece



folded midpiece + coiled tail



short tail

