

Report from CMA

Sujuan Wang , Peng Cui, Miao Zhang
Peng Zhang, Caiying Wei, Xingying Zhang, Na Xu, Jian Liu

National Satellite Meteorological Center (National Center for Space Weather), CMA



GHR SST XXIII
27 June -1 July, 2022
online



Acknowledgements

we would like to thank NOAA/NESDIS/STAR for providing iQuam data, UKMO for providing OSTIA data, CMC for providing CMC data, OSI SAF for providing SST data and NOAA/OAR/ESRL for the long term means OISST.

Report from CMA

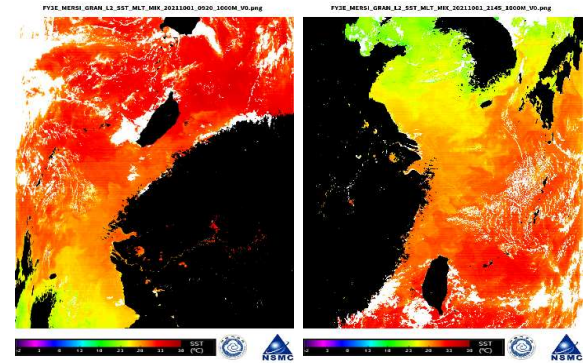
Main activities since GHRSSST XXII

Operational

☐ FY-3E/MERSI-LL SST (FY-3E: the First FY early-morning orbit satellite)

- NLSST, coefficients are obtained via regression against QC'ed in-situ data from iQUAM V2.1
- First guess SST is daily OSTIA or OISST_DailyClim_1982-2011.nc
- SST(subskin, in HDF5 format) will be released soon
- Daily L3C SSTs (0.05° lat/lon grid) are temporally composited during 12 hours, 00UTC and 12UTC centered

FY-3E SST 20211001 9:20UTC 21:45UTC



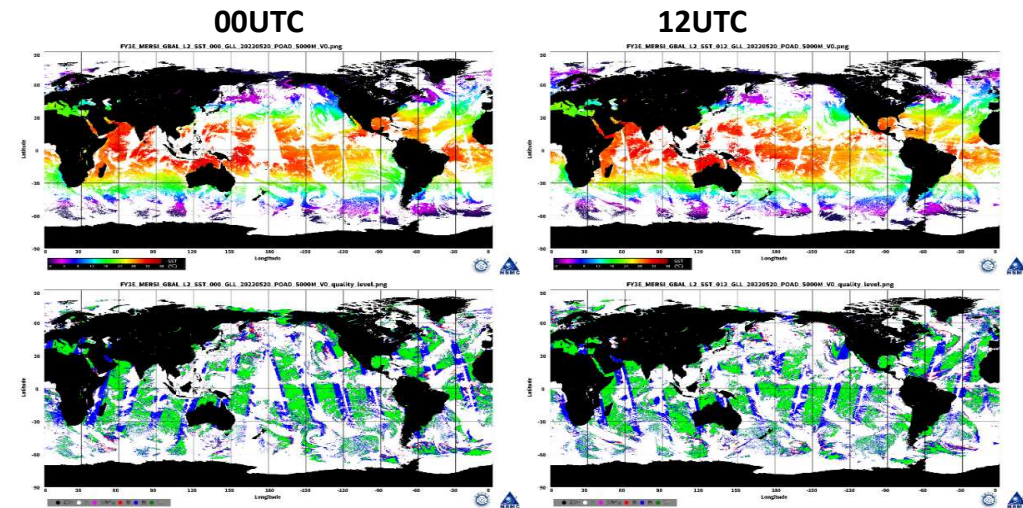
☐ FY-4B/AGRI SST

- Post-launch Test

Planned 2022-2023 launch

☐ FY-3F/MERSI SST

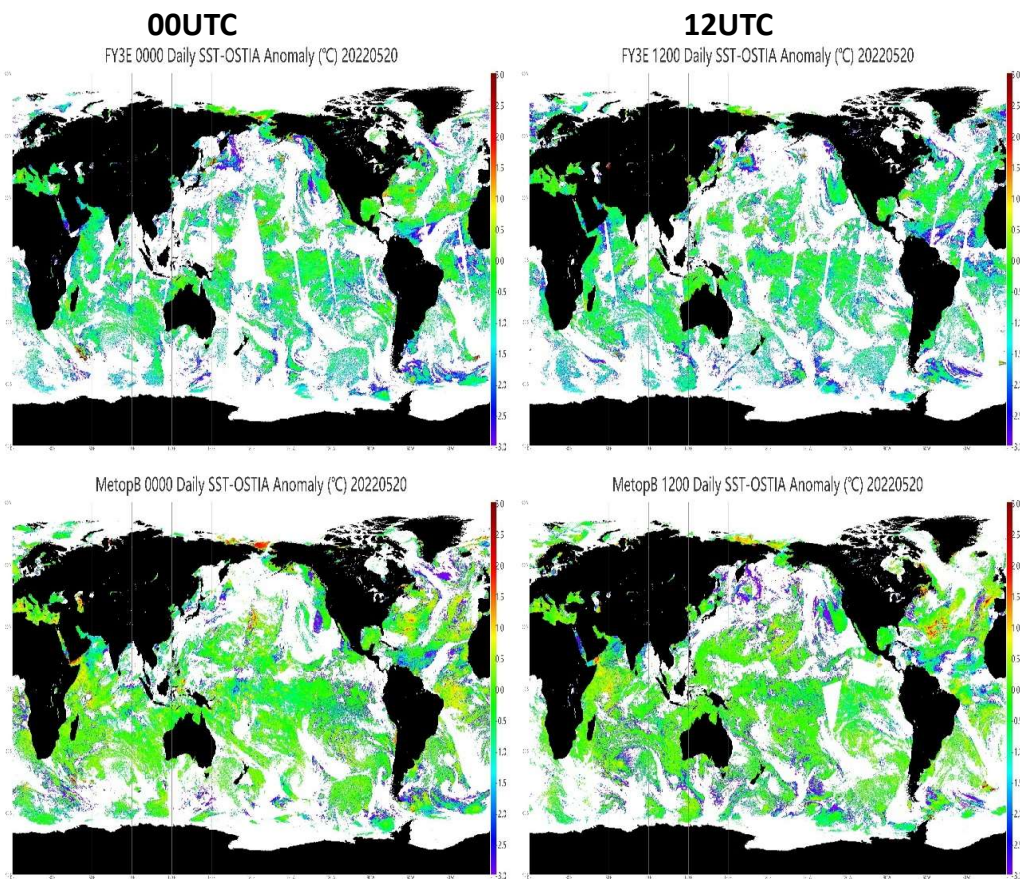
- Pre-launch Algorithm Test
 - ✓ FY-3D/MERSI as Proxy Data



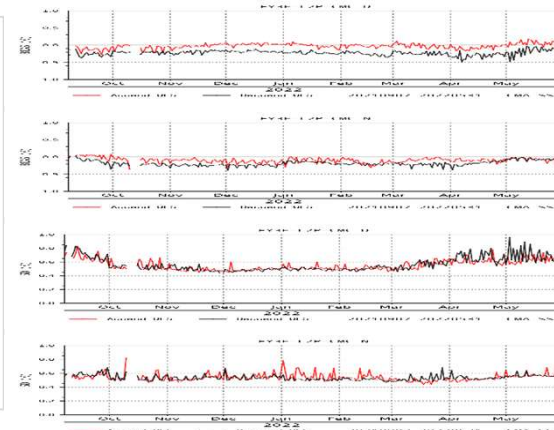
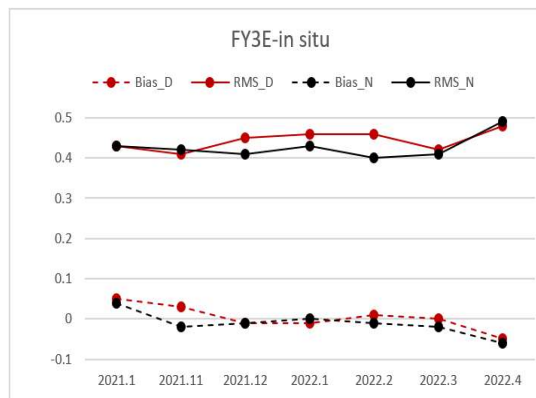
FY-3E/MERSI-LL SST and QL on 20 May 2022. Green: QL5 Blue:QL4 Red: QL3

FY-3E/MERSI-LL SST Cal/Val activities since GHRSSST XXII

FY-3E SSTA Vs MetopB SSTA(2022.5.20)

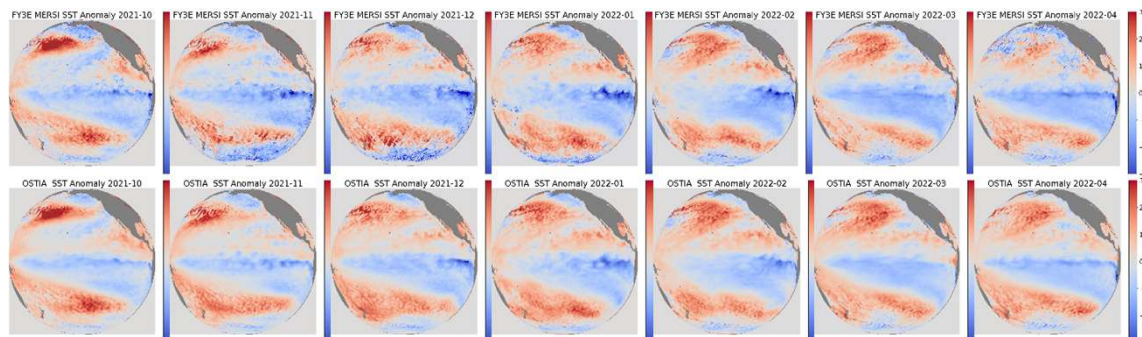


SSTA: SAT-OSTIA



Poster: S. Wang et al. Validation of FY-3E/MERSI-LL SST,S3-ID-011,Calibration, Validation and Product Assessment,GHRSSST XXIII

Evolution of Oct.2021-Apr.2022 La Niña revealed by FY-3E/MERSI monthly nighttime SSTAs



Up:FY-3E minus 1981-2010 monthly OISST
Down: monthly OSTIA minus 1981-2010 monthly OISST