

Corrigenda: Sirbu C, Miu IV, Gavrilidis AA, Gradinaru SR, Niculae IM, Preda C, Oprea A, Urziceanu M, Camen-Comanescu P, Nagoda E, Sirbu IM, Memedemin D, Anastasiu P (2022) Distribution and pathways of introduction of invasive alien plant species in Romania. NeoBiota 75: 1–21. <https://doi.org/10.3897/neobiota.75.84684>

Culita Sirbu¹, Iulia V. Miu², Athanasios A. Gavrilidis², Simona R. Gradinaru³, Iulian M. Niculae³, Cristina Preda⁴, Adrian Oprea⁵, Mihaela Urziceanu³, Petronela Camen-Comanescu⁶, Eugenia Nagoda⁶, Ioana M. Sirbu³, Daniyar Memedemin⁴, Paulina Anastasiu³

1 Faculty of Agriculture - UASVM Iasi, Iasi, Romania **2** University of Bucharest, Center for Environmental Research and Impact Studies, 1 N. Balcescu, 010041, Bucharest, Romania **3** University of Bucharest, Bucharest, Romania **4** Ovidius University of Constanta, Constanta, Romania **5** University Al. I. Cuza, Botanic Garden A. Fătu, 7–9 Dumbrova Rosie St., 700487, Iasi, Romania **6** University of Bucharest, Botanic Garden D. Brandza, Bucharest, Romania

Corresponding author: Iulia V. Miu (iulia.miu@drd.unibuc.ro)

Academic editor: Philip Hulme | Received 1 September 2022 | Accepted 2 September 2022 | Published 28 September 2022

Citation: Sirbu C, Miu IV, Gavrilidis AA, Gradinaru SR, Niculae IM, Preda C, Oprea A, Urziceanu M, Camen-Comanescu P, Nagoda E, Sirbu IM, Memedemin D, Anastasiu P (2022) Corrigenda: Sirbu C, Miu IV, Gavrilidis AA, Gradinaru SR, Niculae IM, Preda C, Oprea A, Urziceanu M, Camen-Comanescu P, Nagoda E, Sirbu IM, Memedemin D, Anastasiu P (2022) Distribution and pathways of introduction of invasive alien plant species in Romania. NeoBiota 75: 1–21. <https://doi.org/10.3897/neobiota.75.84684>. NeoBiota 75: 79–82. <https://doi.org/10.3897/neobiota.75.94331>

The authors misarranged the order of the figures in Sirbu et al. (2022). The correct order of the figures is reproduced below.

The correct Fig. 4 is reproduced below.

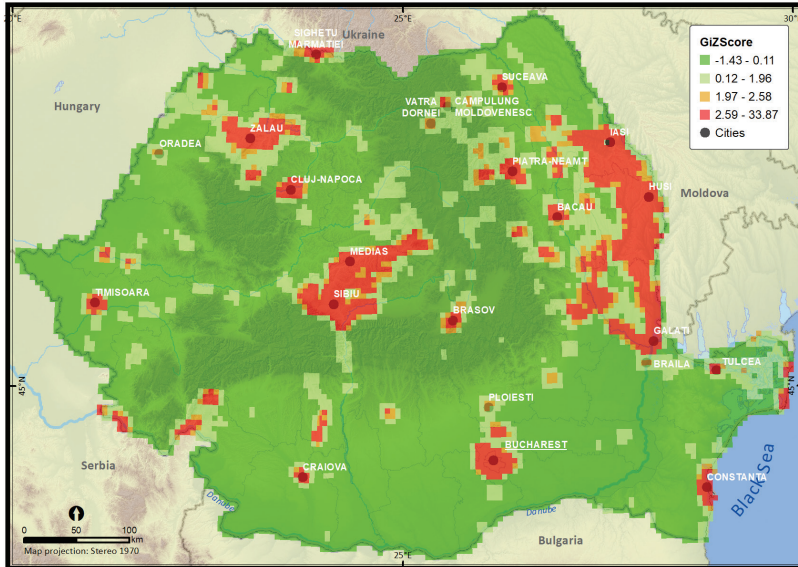


Figure 4. Hotspots of invasive and potentially invasive alien plant species sampling in Romania (in red). The p-value was < 0.05 when Z scores took values between 1.96 and 33.87, suggesting a highly clustered pattern in the number of IAP species occurrences per UTM 5 × 5 km grid cell.

The correct Fig. 5 is reproduced below.

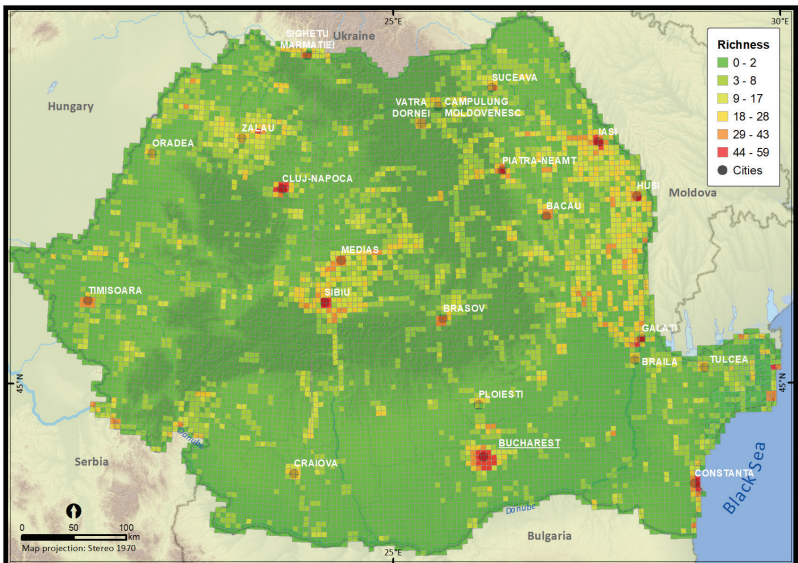


Figure 5. Invasive and potentially invasive alien plant species richness in Romania (5 × 5 km grid resolution).

The correct Fig. 6 is reproduced below.

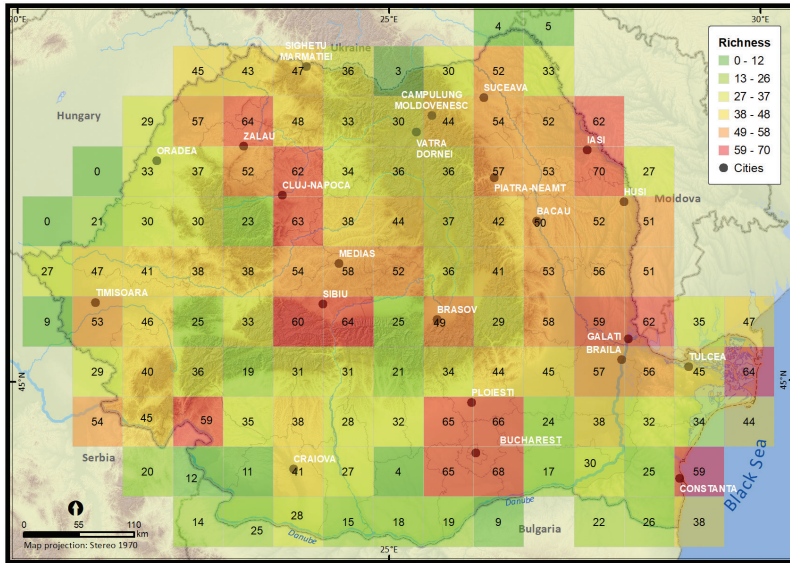


Figure 6. Invasive and potentially invasive alien plant species richness in Romania (50 × 50 km grid resolution).

The correct Fig. 7 is reproduced below.

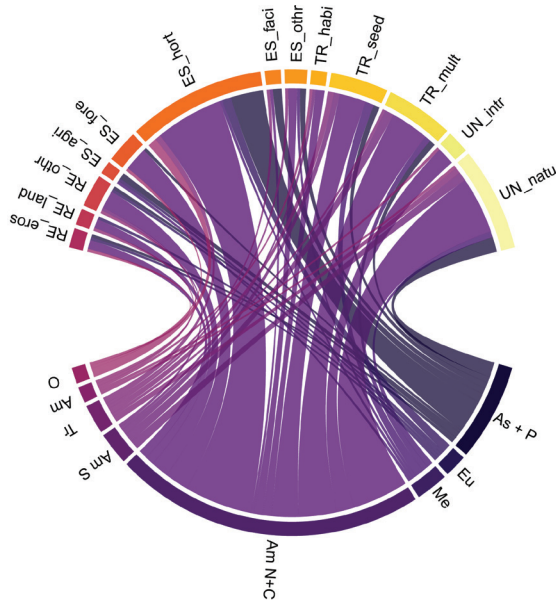


Figure 7. Proportion of invasive and potentially invasive alien plant species' introductions by pathway and geographic origins (see Table 1 for abbreviations).

The correction does not alter the conclusions of Sirbu et al. (2022).

References

Sirbu C, Miu IV, Gavriliadis AA, Gradinaru SR, Niculae IM, Preda C, Oprea A, Urziceanu M, Camen-Comanescu P, Nagoda E, Sirbu IM, Memedemin D, Anastasiu P (2022) Distribution and pathways of introduction of invasive alien plant species in Romania. *NeoBiota* 75: 1–21. <https://doi.org/10.3897/neobiota.75.84684>