

socio-political
exclusion

power
imbalances

unconscious
bias

lack of dialogue
platforms

resource
constraints

incomplete
information

unequal
participation

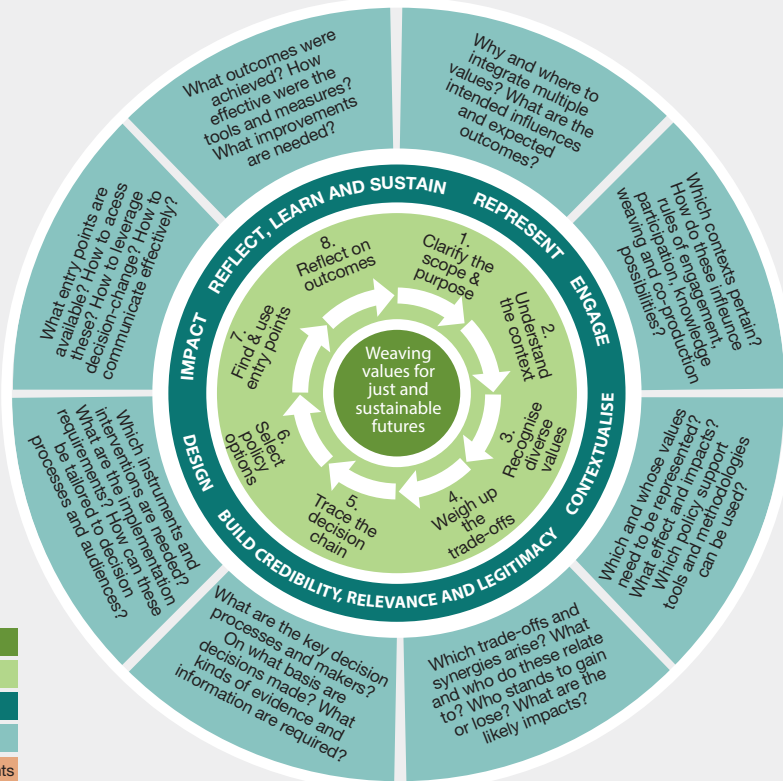
knowledge
asymmetries

capacity &
language gaps

weak
institutions

lack of
accountability

non-inclusive
decision making



core objective

decision cycle

guidelines

guiding questions

challenges & constraints