

Panel Discussion

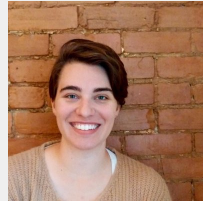
Balancing open for ECRs

■ Dr Cassandra Gould van Praag (she/her), Wellcome Centre for Integrative Neuroimaging, University of Oxford

ACKNOWLEDGEMENTS



Etienne Roesch



Elizabeth DuPre



Kirstie Whitaker



Malvika Sharan



Stephan Heunis



Catherine Harmer



Stuart Clare



Clare Mackay



Medical Sciences Division
Returning Carers' Fund

1. How can open research contribute to career development?

Cross-disciplinary skills

Technical, communication and awareness of possibilities



Stand out

Be at the leading edge of skills that everyone will need



2. ~~Where are the limits of open research?~~ *What can't / won't open fix (by itself)?*



National and institutional
funding priorities

3. What services/strategies exist to ease opening up research?

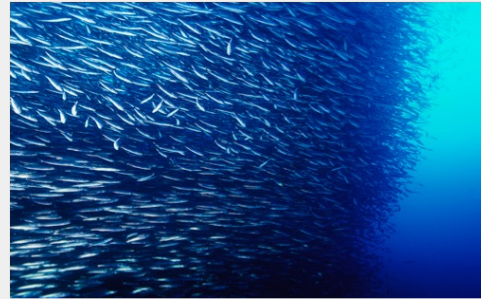
Low-hanging fruit

What will be easy for you? What will your PI find acceptable?

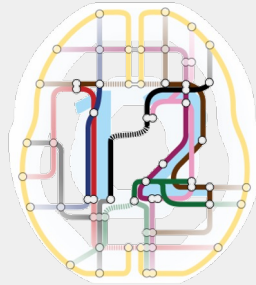


Safety in numbers

Community builds confidence.
Collective action is powerful



4. What case studies do you know of where open research really made a difference?



5. Where do you see need for additional development to further open up research?



DATA SHARING CONTRACTS

Institutions must be able to share sensitive information quickly and easily



RDM AND GOVERNANCE

Researchers and PIs need to see this as integral good practice



SHARING WITH A PURPOSE

Co-creation with downstream users; data challenges

6. Can you think of examples where [always] open science ~~can~~ *could* actually be detrimental to scientific progress?



7. Who should provide quality control on open data, code, and protocols?



8. How far are preregistrations helpful to establish rigorous research?



BALANCING OPEN FOR ECRs

Prioritize open

Make it palatable. Look for low hanging fruit

Community

Connect, share and inspire

Influence

Talk about it! Locally, nationally, in societies

Work in progress

Institutional and structural challenges

Beware dogma

Not everything should be free and open all the time

Integrity

Stick with people you trust. The science is what is important