

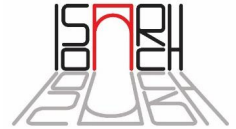
Data Stewardship at TU Delft

<https://doi.org/10.5281/zenodo.7015283> CC-BY Yan Wang & Esther
Plomp / 20220825 / swissuniversities

Esther Plomp



- she/her / e.plomp@tudelft.nl / [@PhDtoothFAIRy](https://www.instagram.com/PhDtoothFAIRy/) / [0000-0003-3625-1357](tel:0000-0003-3625-1357)
- Data Steward @TU Delft, Faculty of Applied Sciences, NL
- Open Research Ambassador & Secretary General @[IsoArch](https://www.isoarch.nl/)
- Contributor @[The Turing Way](https://www.theturingway.com/)
- Mentor @[Open Life Science](https://www.openlivescience.com/)
- Team member @[Open Research Calendar](https://openresearchcalendar.org/)
- Co-chair of a [Research Data Alliance Group on Physical Samples](#)



Open Research Calendar



- Data Stewardship from the TU Delft perspective
 - What type of Data Stewardship?
- Challenges of Data Stewardship at the university in the medium and long term
 - Lessons learned

Data Stewardship from the TU Delft perspective

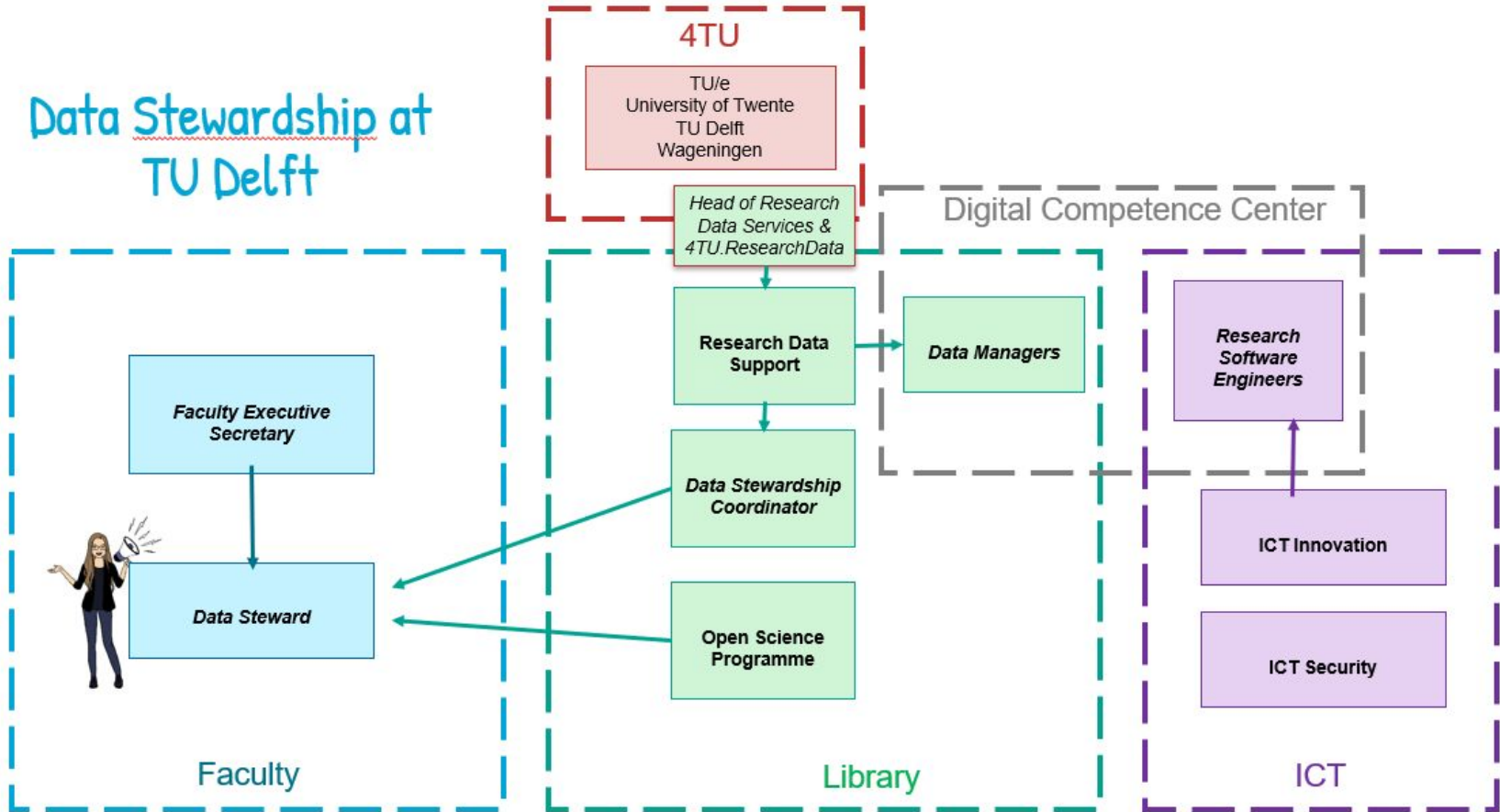
Data Stewards @TU Delft



- Each faculty has their [own Data Steward!](#)



Data Stewardship at TU Delft



RDM support @Library

- [Website](#)
- Electronic Lab Notebooks
- Data repository: [4TU.ResearchData](#)
- Training
- Communication
- Events
- (inter)national developments



Digital Competence Center (since 2020)

- The DCC support team can [help you organize your research workflow](#)
- Project based data & software support



Marta Teperek
Library RDS



Mark Schenk
ICT Innovation



Ashley Cryan
Data Manager



Aleksandra Wilczynska
Data Manager



Dennis Palagin
DHPC Data steward



Meta Keijzer-de Ruijter
Project Manager



Julie Beardsell
DCC Coordinator



Niket Agrawal
RSE



Manuel Garcia Alvarez
RSE



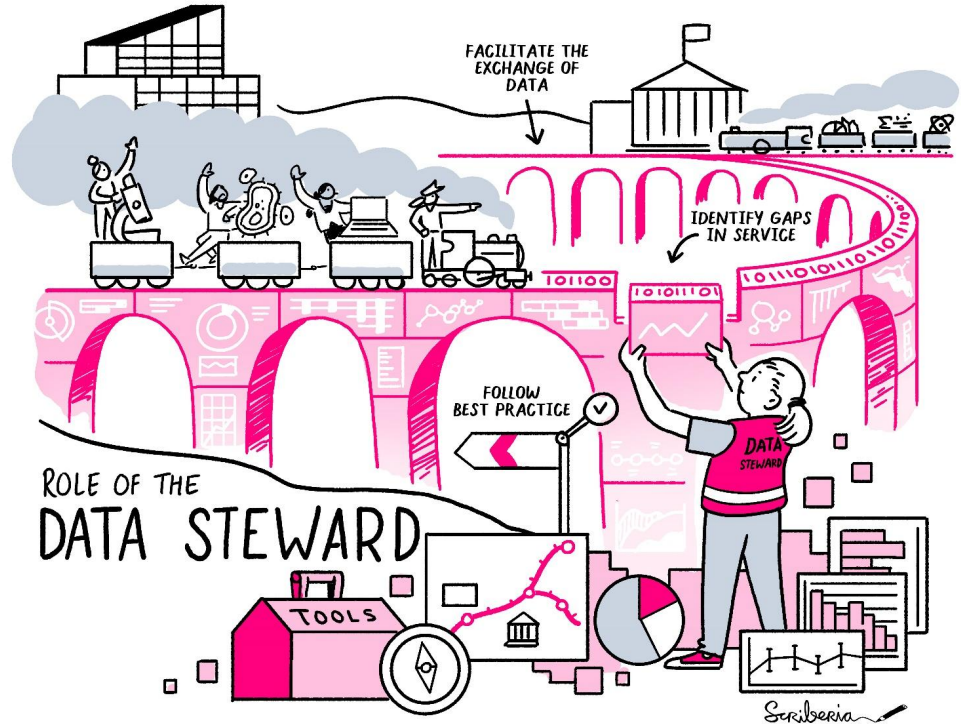
Maurits Kok
RSE



Jose Urria Llanusa
RSE

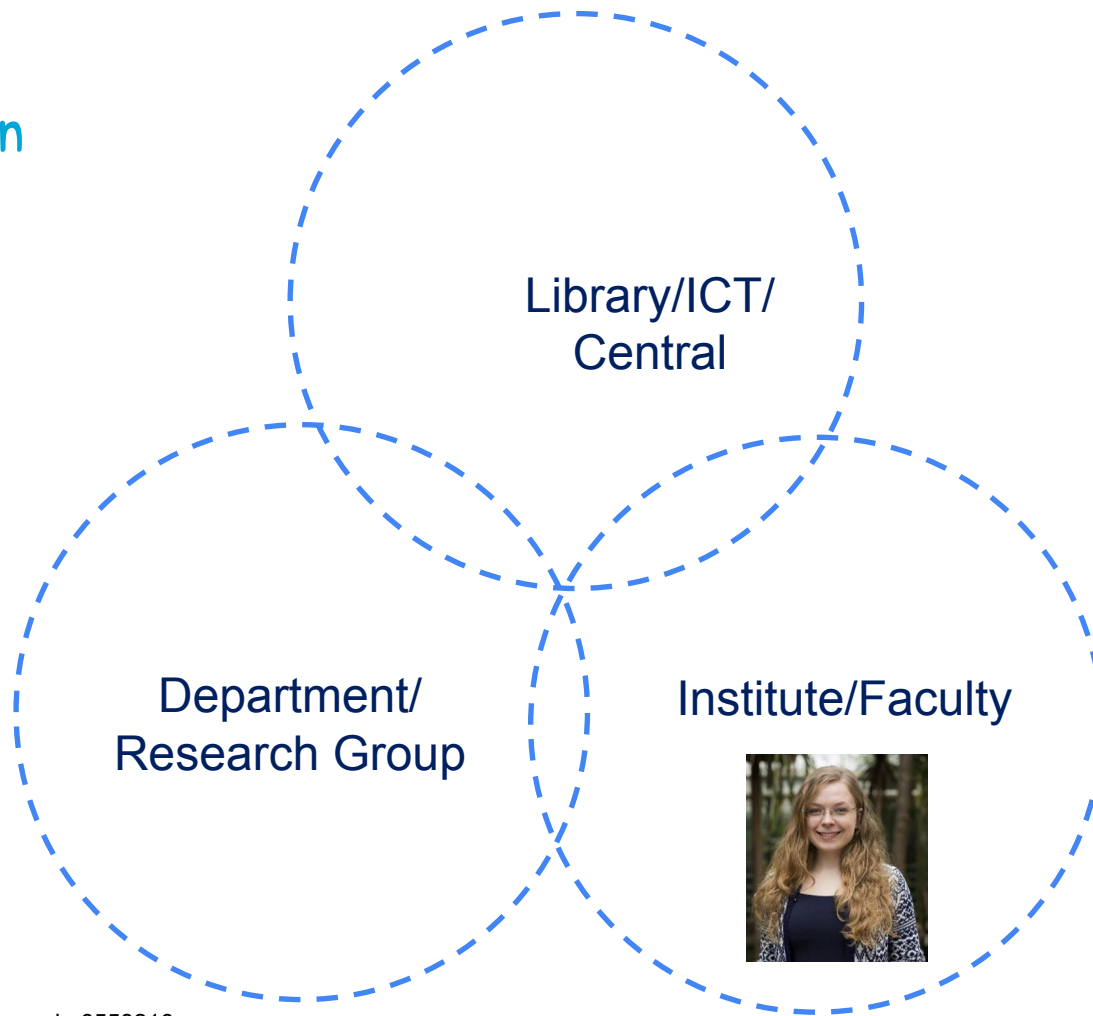
Data Stewards @ TU Delft

- **First contact point** for all data/software/open science questions (advice!)
- **Policy** development
- **Advocacy**
- **Training**
- **Network:** referral to other staff as needed

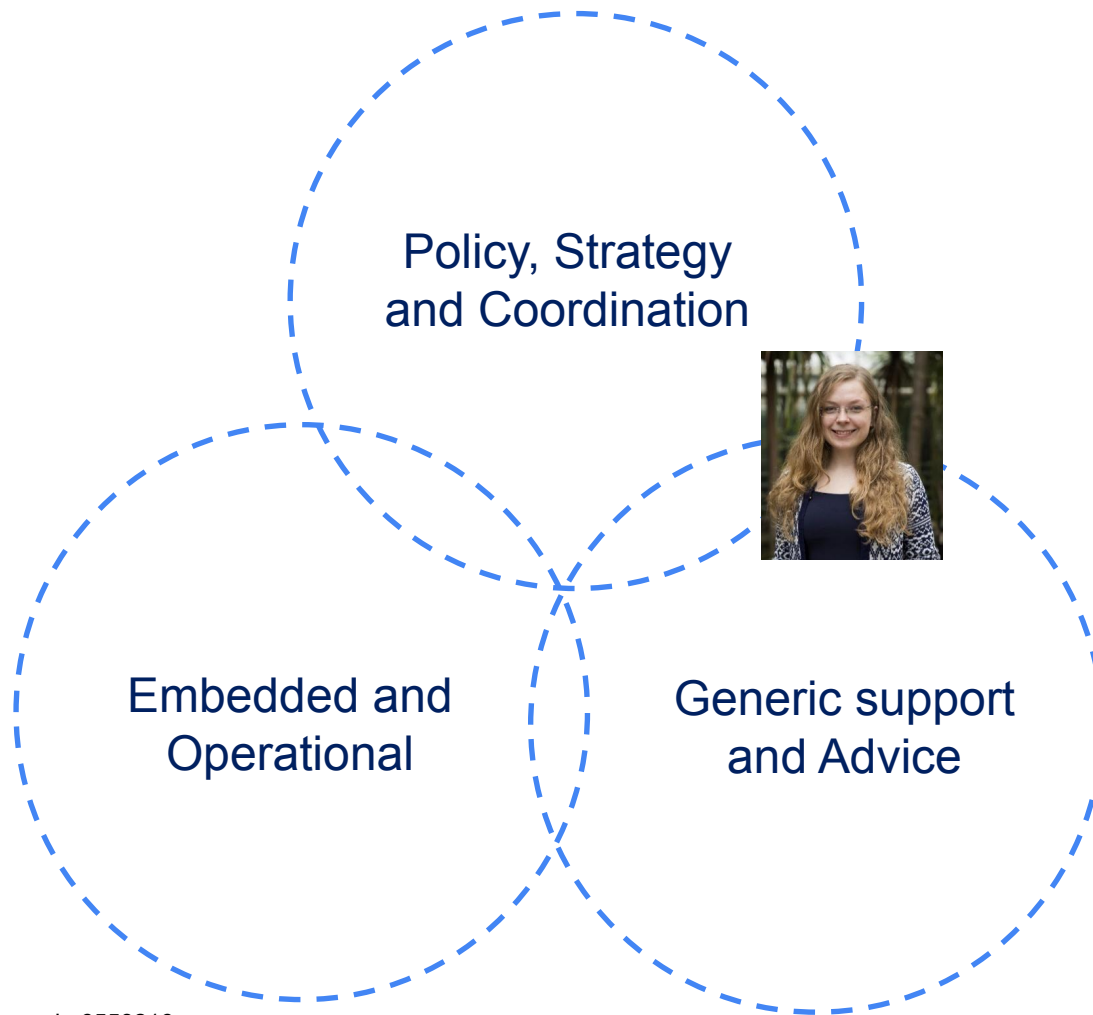


The Turing Way project illustration by Scriberia. Used under a CC-BY 4.0 licence. DOI: [10.5281/zenodo.3332807](https://doi.org/10.5281/zenodo.3332807).

Location



Tasks



*LCRDM data
stewardship
task areas*
[10.5281/zenod
o.4320504](https://doi.org/10.5281/zenodo.6558216)

Training @TU Delft

- [Software/Data Carpentry workshops](#) (Library, Data Stewards, Digital Competence Center, ICT Innovation, Researchers)
 - see [Plomp et al. 2022](#) for more info
- [Research Data Management 101 course](#) (Library)
 - Materials openly available on [Zenodo](#) and [web](#)
- Working with personal research data (in development – Library, Data Stewards)
- On-demand training (Data Stewards, Digital Competence Center, Researchers)
- [Essentials for Data Support](#) (4TU.ResearchData/Library)
- [Open Science MOOC](#) (Library, Researchers)
- [Open Life Science](#) (Data Stewards & Digital Competence Center)
 - All talks are available on [YouTube](#)
 - Contact team@openlifesci.org



Research Data Management Policy - TU Delft

2018, 2020

TU Delft Research Data Framework Policy

- Roles and responsibilities at the university level
 - Several compulsory statements
 - Template for faculties



2020-2022

Faculty Policies

- Roles and responsibilities at the faculty level
 - Reflecting disciplinary differences

[Available on the library website](#)

Research Data Management Policy – Faculty of Applied Sciences

- **All individuals involved in research** are responsible for:
 - Ensuring that research data, code and any other materials needed to reproduce research findings are appropriately documented, **stored and shared in a research data repository** in accordance with the **FAIR principles**.
- **PhD candidates** are responsible for:
 - Developing a written **data management plan (DMP)** for managing research outputs within the first 12 months of the PhD study.
 - Ensuring that all data and code underlying completed PhD theses are appropriately documented and accessible for at least 10 years from the end of the research project, in accordance with the FAIR principles - **before they defend their thesis**.

Faculty of Applied Sciences Research Data Management Policy



Key competencies of a Data Steward

assertiveness
empathy
adaptability
communication
research experience
persuasion
RDM knowledge
understanding researchers
organisational skills
training skills
basic programming/it skills
subject knowledge

More information about Data Steward competencies:

<https://edison-project.eu/data-science-competence-framework-cf-ds/>

Key competencies of a Data Steward



Anja Gerber ☀️
@anja_g_werder



Ich glaube, mein halber Job besteht aus
Kommunikation, aber mir macht das sehr viel Spaß. :)
[#FDM](#) [#Datenmanagement](#)

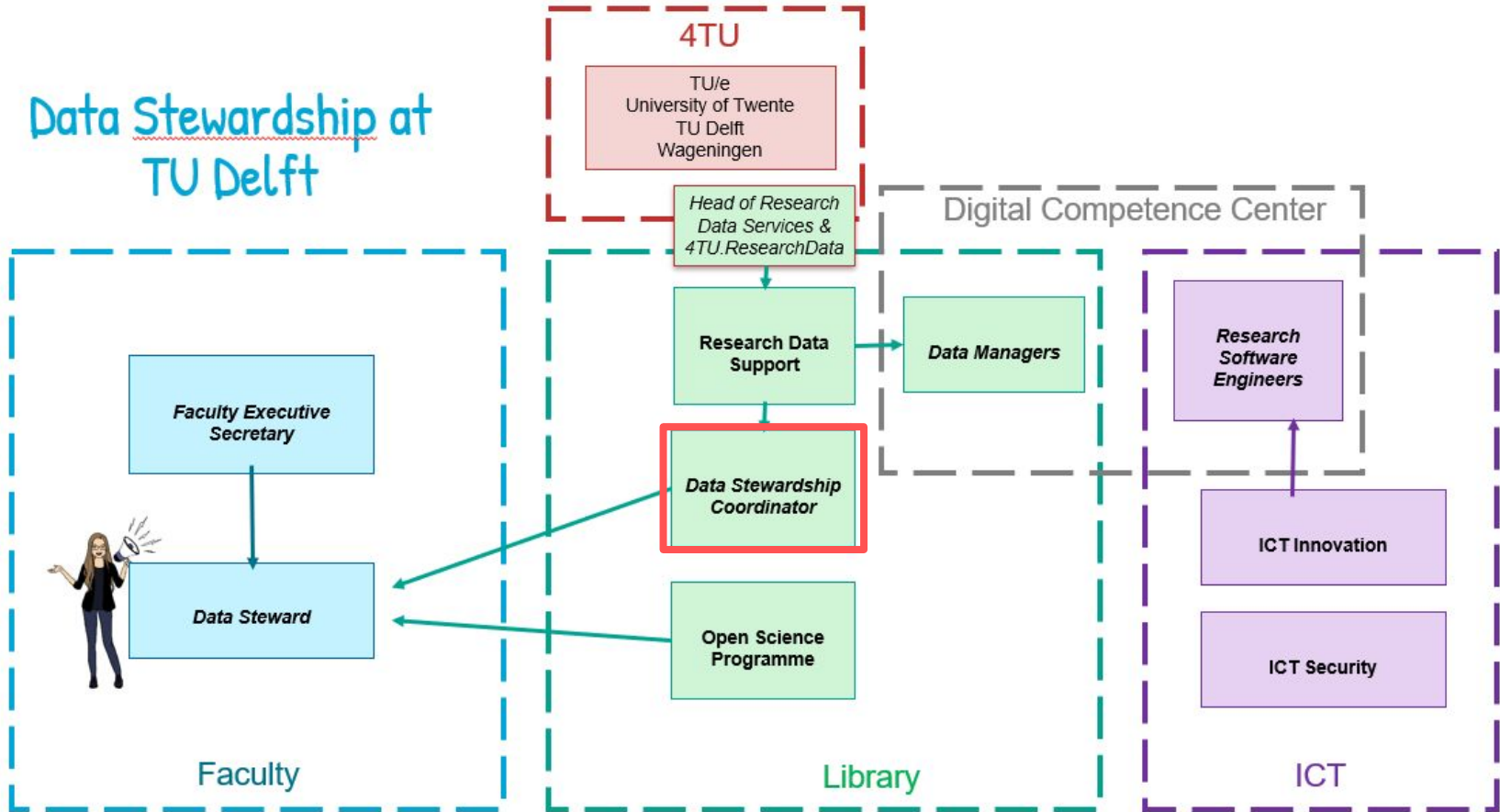
[Tweet vertalen](#)

10:14 p.m. · 16 aug. 2022 · Twitter Web App

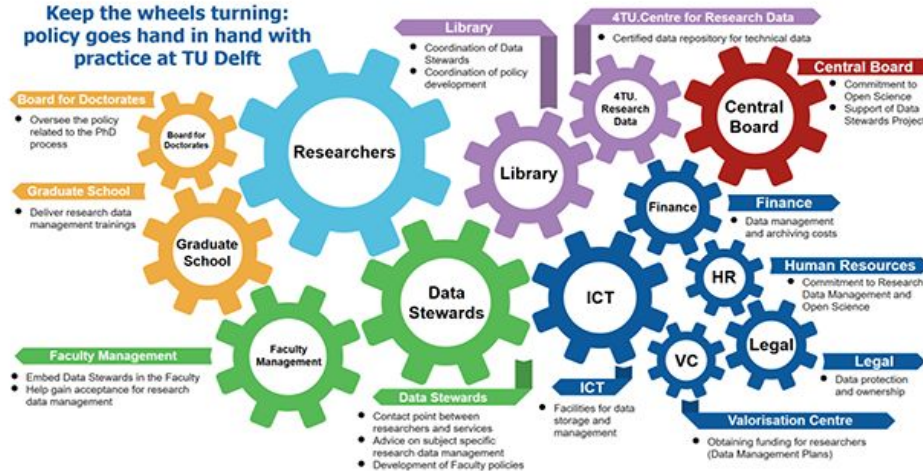
https://twitter.com/anja_g_werder/status/1559634700594995206

Challenges of Data Stewardship & Lessons Learned

Data Stewardship at TU Delft



Data Stewardship is more than Data Stewards (to be realized)

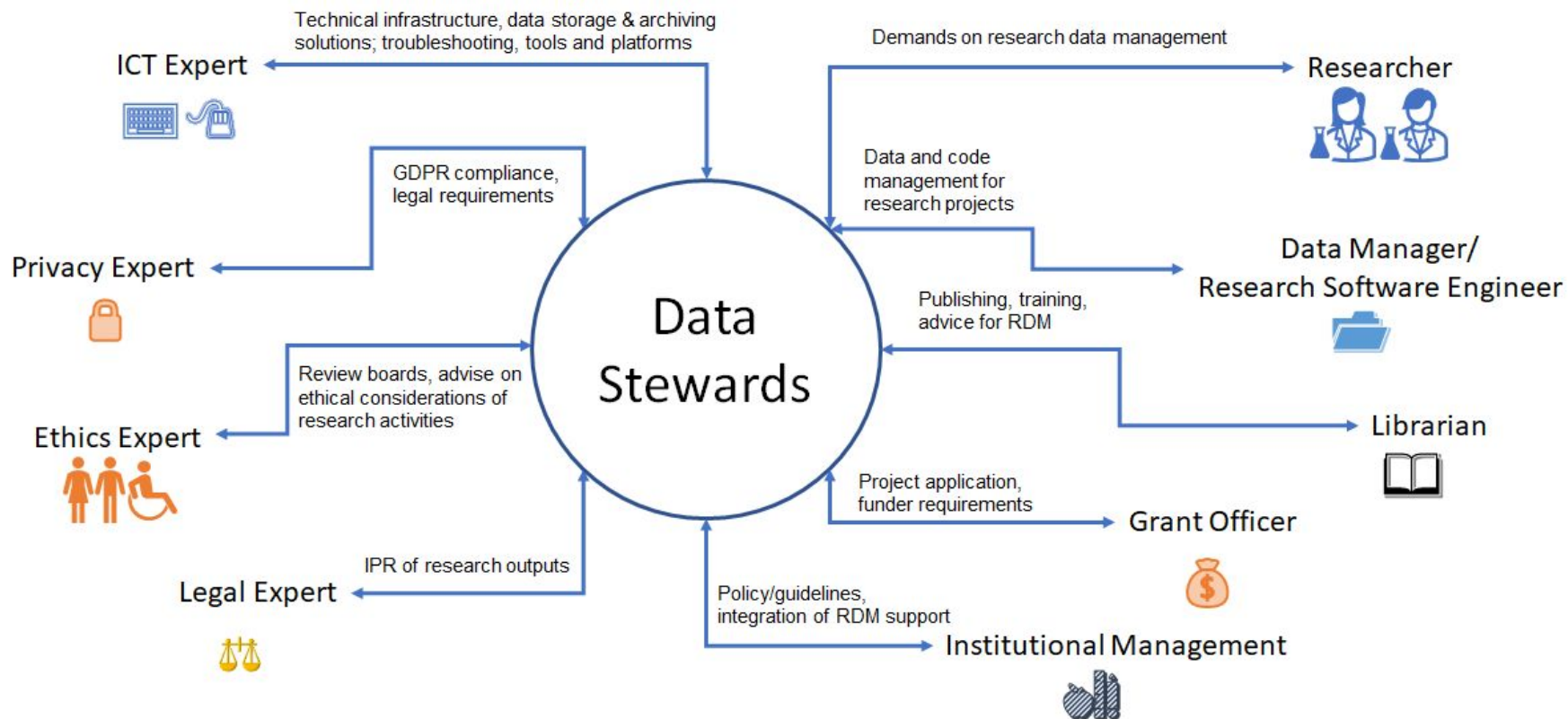


Issues are often more complex:

- Data collection, storage, sharing and reuse practices
- Implications of legal/ethics/privacy and institutional requirements
- Different levels of data literacy in the project consortium
- Disciplinary practices of Rewards & Recognitions
-

Cruz, M., Dintzner, N., Dunning, A., van der Kuil, A., Plomp, E., Teperek, M., ... & Versteeg, A. (2019). Policy needs to go hand in hand with practice: The learning and listening approach to data management. *Data Science Journal*, 18(1). <http://doi.org/10.5334/dsj-2019-045>

RDM ecosystem within institutions (example)



Engage others in Data Stewardship

Researcher



- Awareness of the importance of RDM
- Acknowledgment of own responsibilities
- Willingness to obtain basic digital/data skills
- Collaborate with Data Stewards and other experts

Research support teams



- Show interest in how research works
- Provide compliant services and tools
- Collaborate with each other at operational level

Institutional Management

- Allow room for exploration/innovation
- Support integration of Data Stewardship with existing services
- Support sustainable expertise (career tracks)

Which Data Stewardship Model is for me?



RDA Survey on Data Stewardship Models

(<https://doi.org/10.5281/zenodo.6665146>)

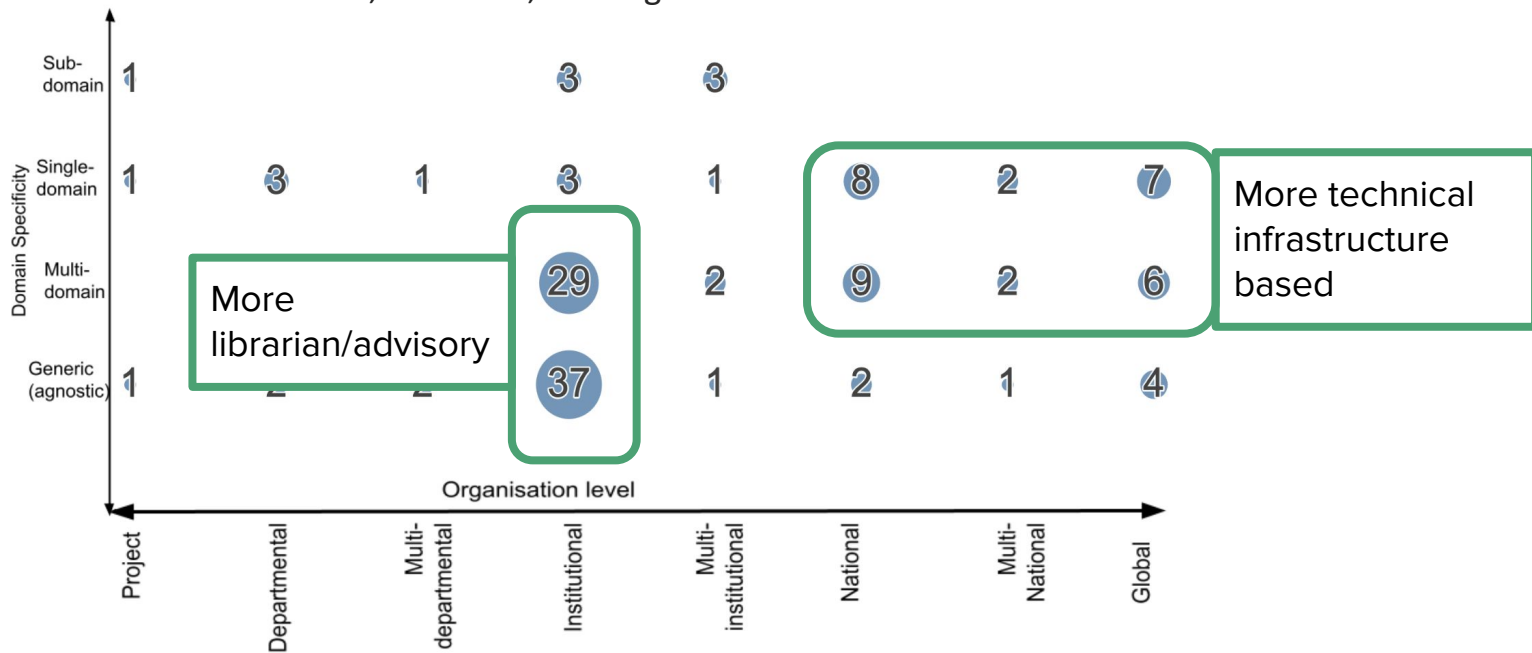
- Survey initial analysis report in final stages of editing - due soon!

- Survey dataset available <https://doi.org/10.5281/zenodo.6665306>

Which Data Stewardship Model is for me?

Key messages from the survey

1. 136 responses: 82 'complete'
2. Two identifiable main cohorts - roles, functions, funding



Which Data Stewardship Model is for me? (hard to copy from others)

- Budget and resources
 - Centralised vs Decentralised
 - New services vs Existing services
- Objectives
 - Institutional vision and strategy
 - Focus of support
 - Infrastructure, tooling, applications
 - Institutional processes
 - Research activities / researchers' awareness
- Types of Data Steward support
 - Hands on support to research projects (research, infrastructure)
 - Domain-specific advisor (generic, research)
 - Data management strategy (policy)



Get in contact to exchange practices



Yan Wang

Data Stewardship coordinator

y.wang-16@tudelft.nl

@yan_wang

- Organizational model for Data Stewardship
- Career tracks for Data Stewards
(RDA survey <https://bit.ly/DSCareerTracks>)
- Data Stewards education
- RDM stakeholder engagement
- 4TU.ResearchData internship program
(<https://bit.ly/4TUResearchDataInternship>)

Thank you for your attention!

Esther Plomp, e.plomp@tudelft.nl

Yan Wang, y.wang-16@tudelft.nl

Many thanks to Jeff Love for the competencies resource, and Katja Fiechter for coordinating the presentation.

Templates for Research Grants

- [NWO/Horizon Europe](#)
 - CC-BY-SA 4.0

Guidance Document for the Open Science & Research Data Management Sections of Horizon Europe Applications

TU Delft Data Stewards, Open Science Community Manager et al, August 2021

Purpose of this Document:

This document provides **example answers** to help TU Delft researchers address the questions in Horizon Europe Programme Standard Application Form, Project proposal- Technical description (Part B) section 1.2 ("Open Science" and "Research data management and management of other research outputs") sections.

This document complements the Information and Resources provided in the [Horizon Europe Programme Guide](#).

Important Notes:

- In Part B, section 1.2 of your application, you should address open science specifically in your response to the following questions:
 - [Describe how appropriate open science practices are implemented as an integral part of the proposed methodology... \(in 0.5-1 page\)](#)
 - [Research data management and management of other research outputs \(1 page\)](#)
 - [Describe how the consortium brings together the necessary disciplinary and inter-disciplinary knowledge... \(in 0.5 page\)](#)
- In Horizon Europe, open science practices are considered in the evaluation of proposals, under "excellence" and under the "quality and efficiency of implementation".
- This does NOT apply to the ERC programme where open science is not included in its evaluation.
- Exact wording varies between the HE application forms, but the gists are the same.

Note from authors:

Open science practises vary between disciplines and are quickly evolving with time - any and all suggestions for improvement are very welcome. If you have questions, need support in answering the sections below, or have any suggestions and comments about this document, please contact the [Data Steward of your faculty](#).

Open Science Community TU Delft

- The [Open Science Community Delft](#) (OSCD) is an **inclusive learning community** that focuses on sharing and promoting **Open Science** practices
- Part of the **broader network** of Open Science Communities: INOSC
 - The Netherlands, Galway, Sweden
- [Open Science Community Starter Kit](#)



Image by [Anita Eerland](#), licensed under [CC BY-ND 3.0](#).

Tools

- [DMPonline](#)
 - Create data management plans
 - Templates and guidance (storage solutions, example answers)
 - Webinar: [DMPonline: towards better efficiency](#)
- [Electronic Lab Notebooks](#)
 - Searchable, backed up notebooks that can be reused and shared more easily
- [4TU.ResearchData](#)
- [GitLab](#)
- [Website](#) with information and FAQ

Research Data Management



The image shows a navigation grid for Research Data Management, organized into two rows of three columns each. Each column represents a main category with a colored icon and a title. Below each title is a list of sub-topics.

Plan	Policies	Manage
Data management plans	TU Delft & Faculty Policies	The goal of data management
DMPonline	Funders' Policies	Storage
Grant Proposals	Publishers' Policies	Confidential Data
Data ownership		Collect and document
		Electronic Lab Notebook

Publish	Support	Training & Events
Prepare data for publication	Data Stewardship	Training for Researchers
Cite your data	Data Champions	Training for Support Staff
Publish research data	Digital Competence Centre	News & Events
Publish research software		
Licenses		
FAIR Data Fund		