

FLÂNEUR123

Els Van Meerbeek

KU Leuven Department of Architecture (Belgium)
research groups OSA & L/A/P

Carton123 architecten



‘Explorations & Cartographies’ – it is simply not possible for an architect to resist such a call. There is this ever present need to know where we are, where we might go, and why. It is the ‘terra incognita’ of an architect’s mind, at the very start of every project. The joy of possible discoveries and the urge for control make a great combination.

The title of the call was the promise for a delightful adventure, a mind-stretching exercise. It soon became clear that the goal was not to simply draw a map of our practice. We did however take on the attitude of a cartographer : exploring, looking closely and scouting. The findings were described afterwards, a set of office discoveries was drawn.

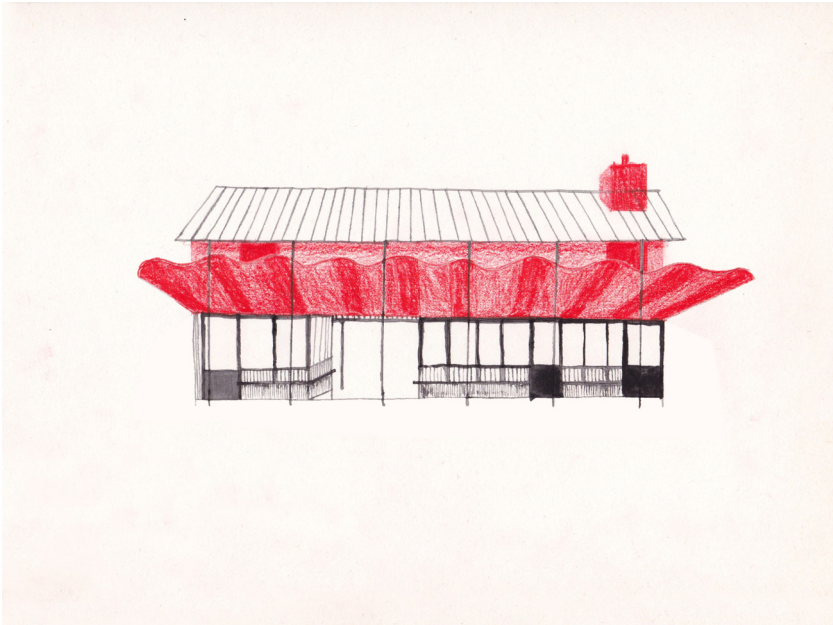
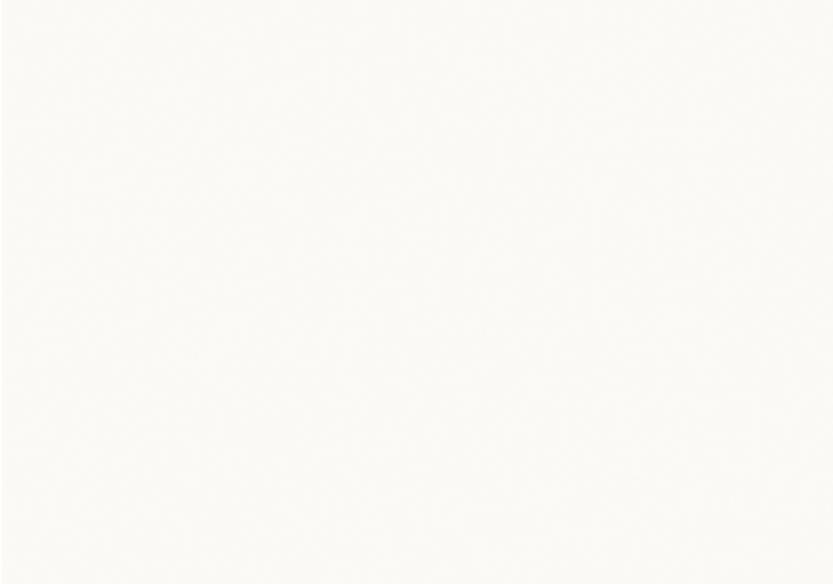
They were the starting point for ‘The not so clean desk’, a 9-minute video presentation, made for the PIR#03 conference. It consists of 162 drawings, accompanied by a spoken text. Twelve of them are shown on the following pages. They were made by Pauline Vermeulen, in close collaboration with Els Van Meerbeek.

In the end, the whole exercise aimed at letting the viewers reflect and connect with a world of imagination. The PIR#03 exploration of our office as unknown territory is not ‘the story of mapping a world’ but rather ‘mapping the world of a story’. Let it be an invitation to imagine other possible stories.

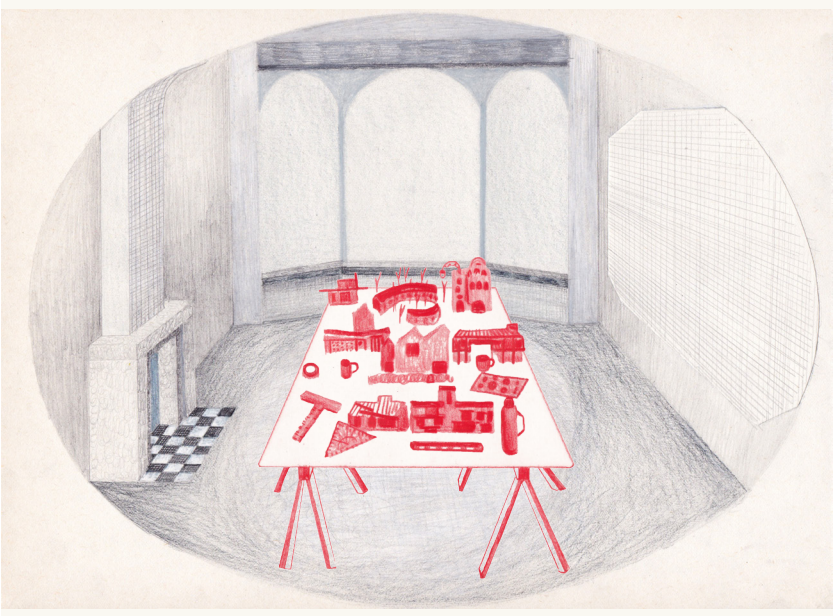
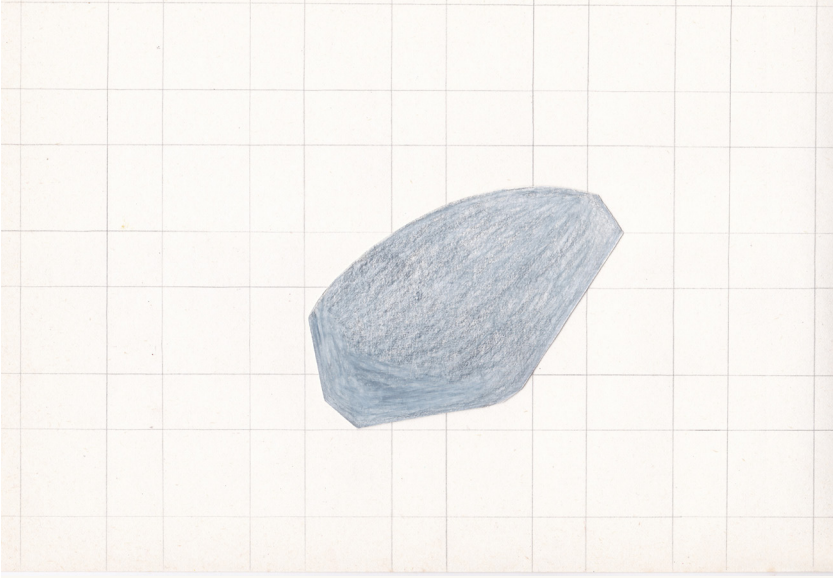
drawings :

(c) Pauline Vermeulen, Carton123, 2021

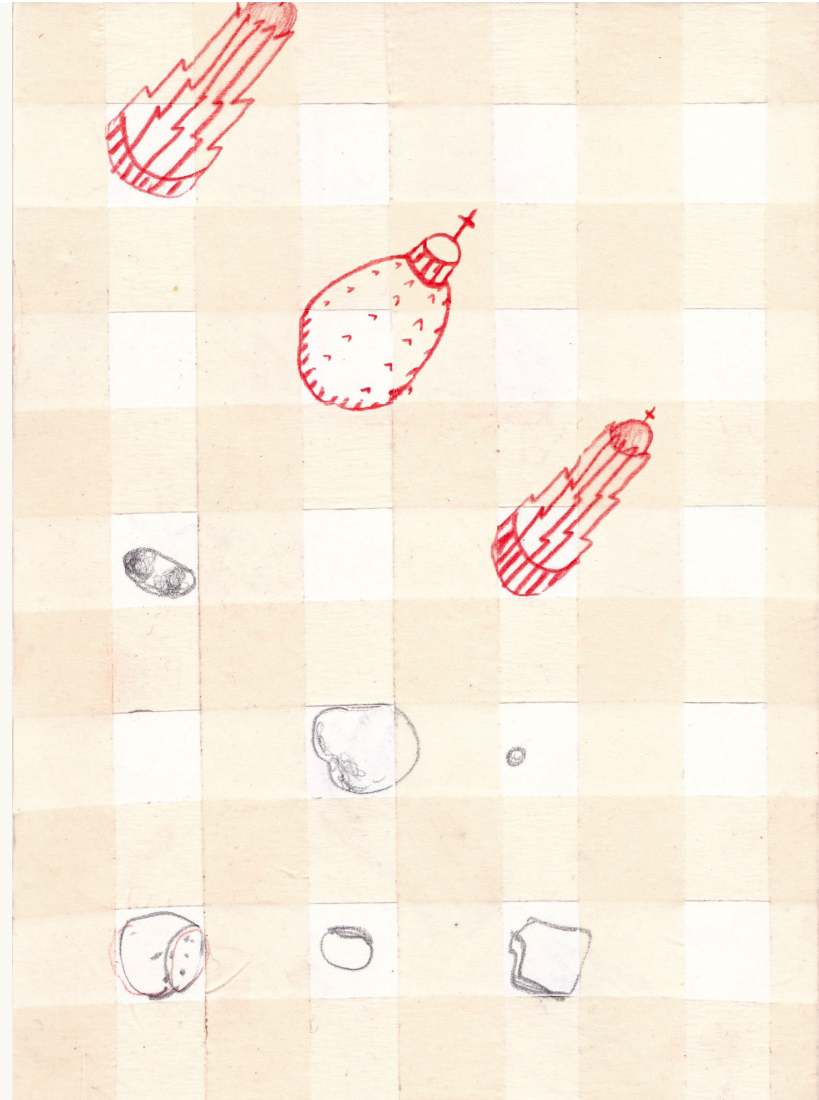
(c) Joost Raes, boat drawing, 1989



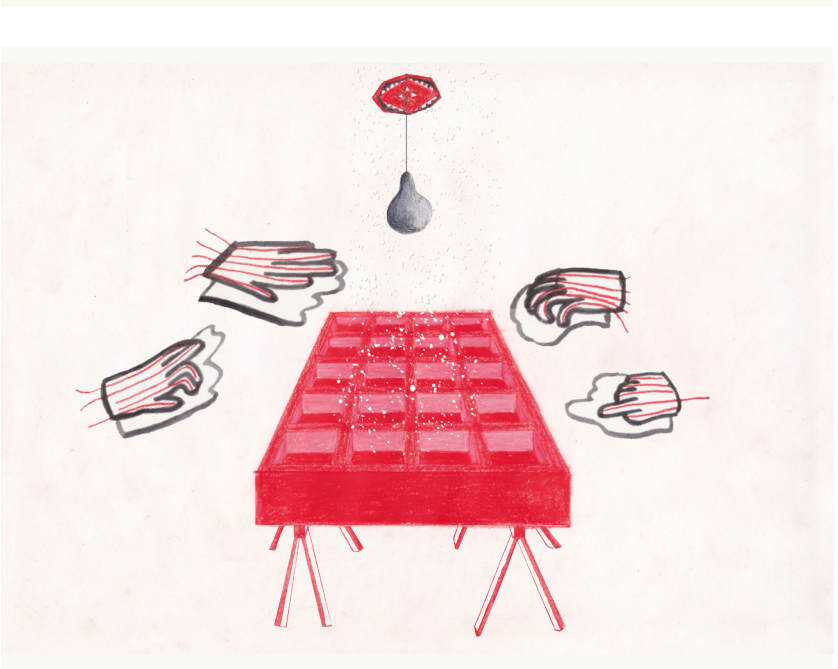
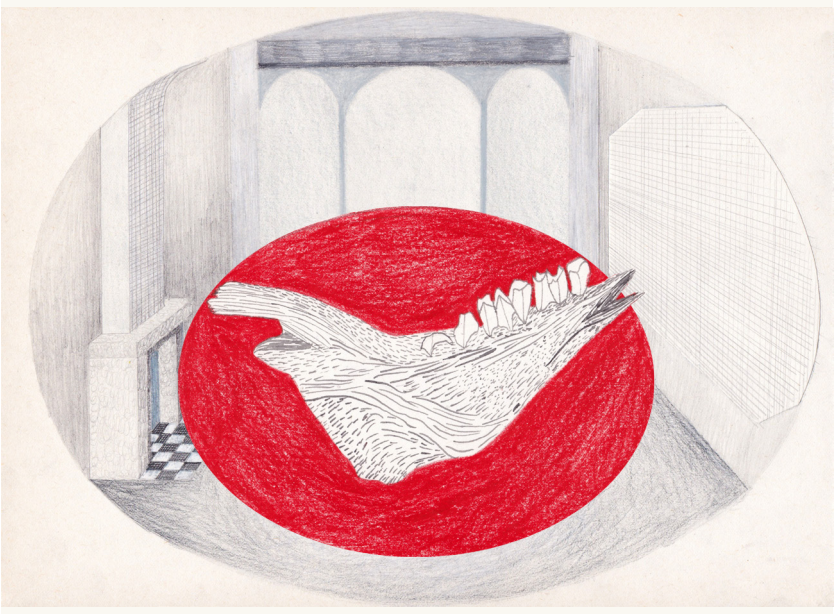
“The principal motive of the wanderspirit is curiosity - the desire to know what is beyond the next turning of the road,

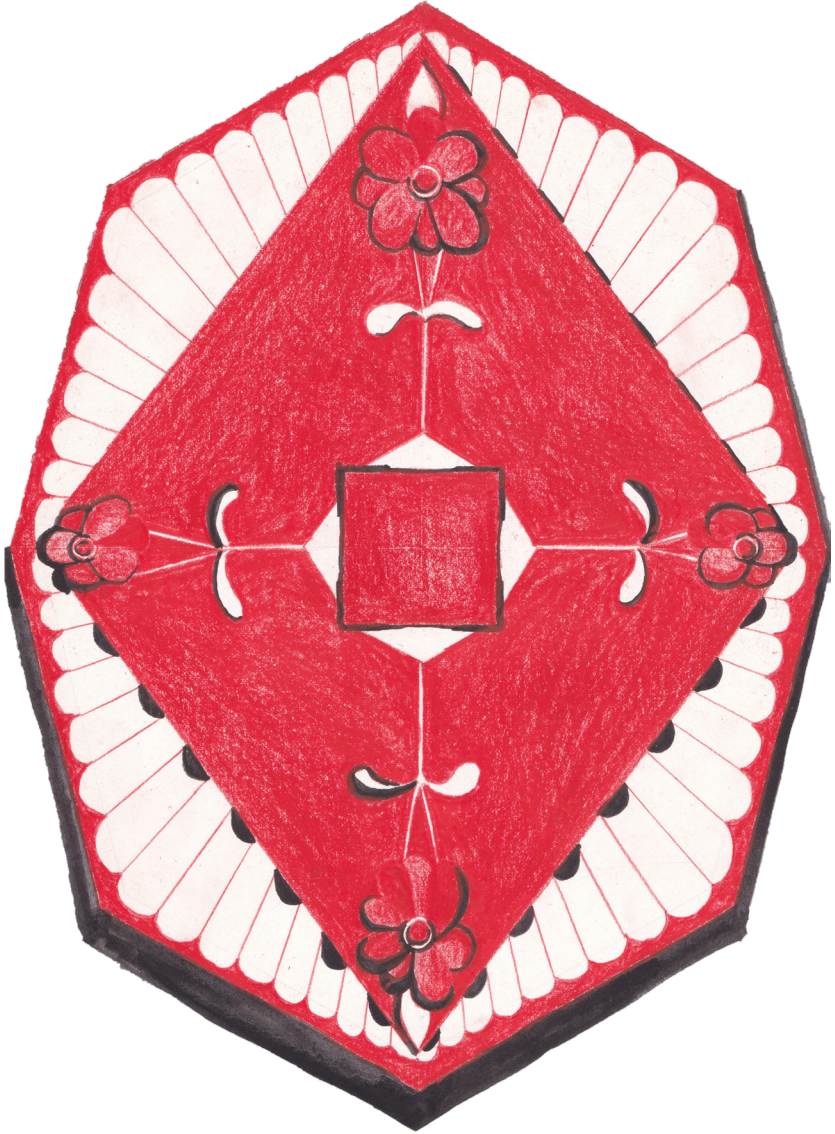


and to probe for oneself the mystery of the names of the places in maps.



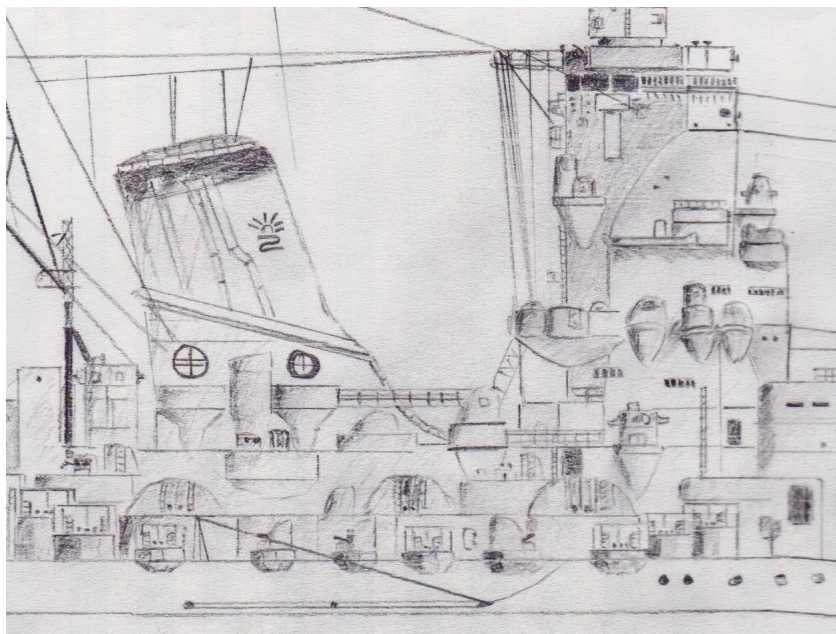
In a sub-conscious way the born wanderer is always expecting to come on something very wonderful - beyond the horizon's rim.

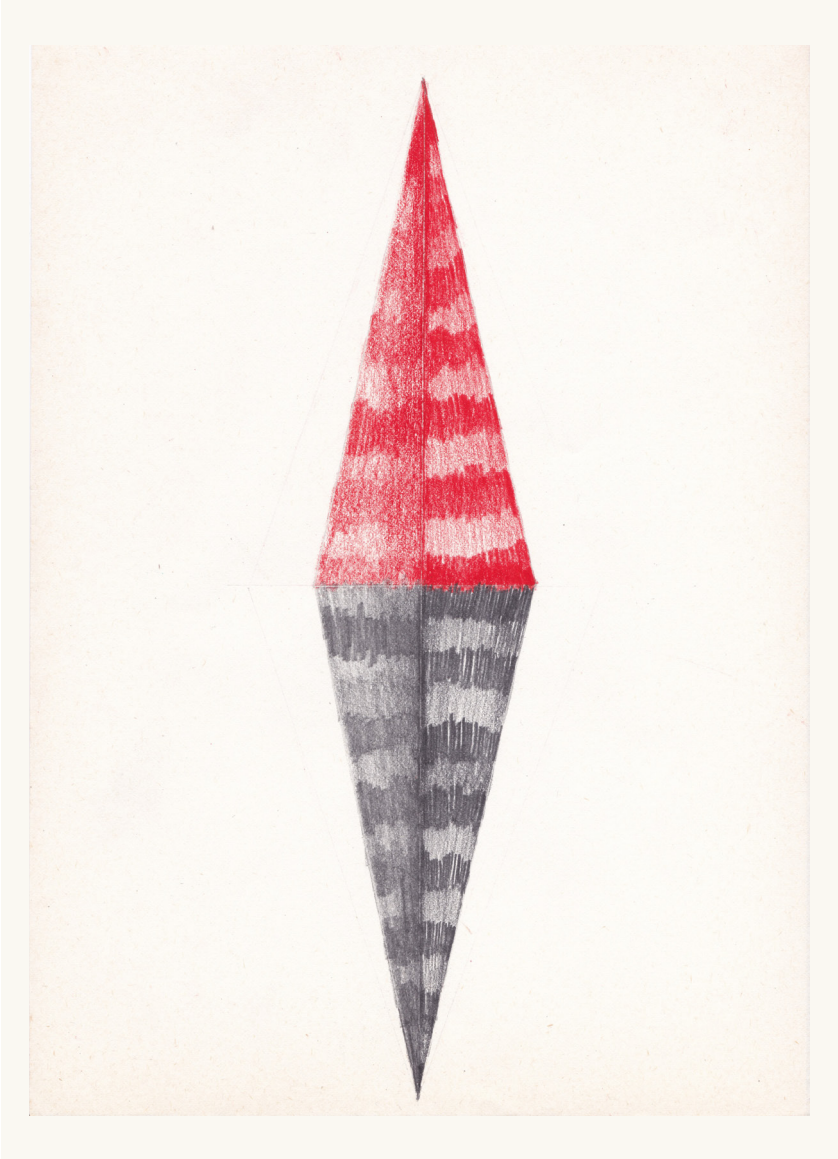




The joys of wandering are often balanced by the pains;







but there is something which makes the desire to wander or explore almost incurable in many human beings.”

Graham, Stephen (1927) 'The gentle art of tramping', The Garden City Press: Letchworth, pp. 45

Practices in Research #03 - Explorations & Cartographies - June 2022

online open access double-blind peer-reviewed journal for practice-based research in architecture.

edited by

Benoît Burquel (ULB); Benoît Vandenbulcke (ULiège); Harold Fallon (KU Leuven)

scientific committee for the conference

Annelies De Smet (KU Leuven), Wouter Van Acker (ULB), Sebastian Kofink (Buero Kofink Schels, Hochschule München), Simon Jüttner (Buero Kofink Schels, Hochschule München), Rolf Hughes (KU Leuven), Lisa De Visscher (A+ Architecture, ULiège), Ido Avissar (List, EAV&T Paris Est), Harold Fallon (AgwA, KU Leuven), Benoît Vandenbulcke (AgwA, ULiège), Benoît Burquel (AgwA, ULB)

scientific committee for the publication

Asli Çiçek (Asli Çiçek, U Hasselt), Caroline Voet (Voet Architectuur, KU Leuven), Karen Kesteloot (Studio Bont, KU Leuven), Bram Aerts (Trans architectuur, stedenbouw, KU Leuven), Claus Peder Pedersen (Arkitektskolen Aarhus), Arnaud Hendrickx (KU Leuven), Nel Janssens (KU Leuven), Johannes Kuehn (Bauhaus Weimar), Xavier Van Rooyen (U Liège), Eric Le Coguic (U Liège)

double-blind peer review process : www.architectureinpractice.eu/pirjournal

front and back cover images : © Maxim Lannaux and Corentin Lefebvre

thanks to Orfée Grandhomme & Ismaël Bennani

Practices in Research is published under a Creative Commons Attribution-ShareAlike 4.0 International License and fulfils the DOAJ definition of open access. Practices in Research provides immediate Open Access to its content on the principle that making research freely available to the public supports a greater global exchange of knowledge. Copyright for articles published in this journal is retained by the authors without restriction. By appearing in this Open-Access journal, articles are free to use, with proper attribution, in educational and other non-commercial settings.

ISSN: 2736-3996

Practices in Research Journal
Rue des Palais 153 - 1030 Brussels
T. +32 (0)2 244 44 36
info@architectureinpractice.eu
www.architectureinpractice.eu/pirjournal



In Practice

