

The Alan Turing Institute

Impact through community: The Turing Way

July 20, 2022

Dr Alden Conner (she/her)

Research Application Manager

Tools, Practices, and Systems Programme



The Alan Turing Institute

- We undertake research which tackles some of the biggest challenges in science, society and the economy
- We collaborate with universities, businesses and public and third sector organisations to apply this research to real-world problems, with lasting effects for science, the economy, and the world we live in

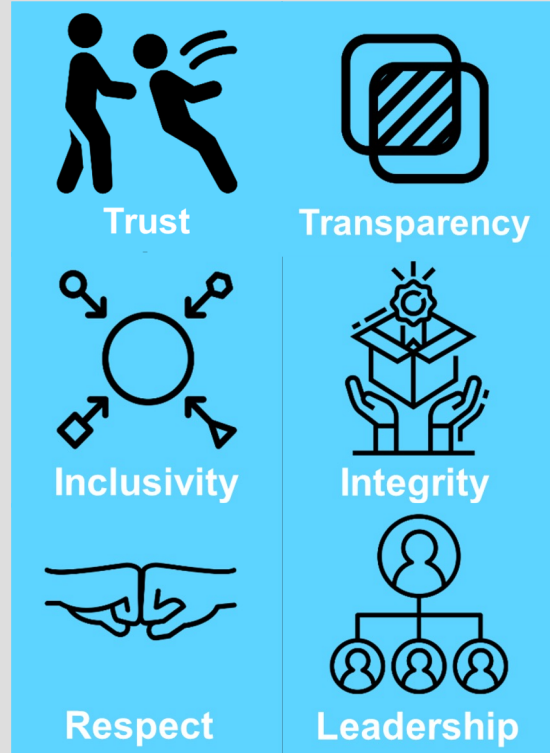
Collaboration in action

- Leveraging expertise from different areas strengthens research
- Public engagement steers us towards impact
- Collaboration brings its own challenges



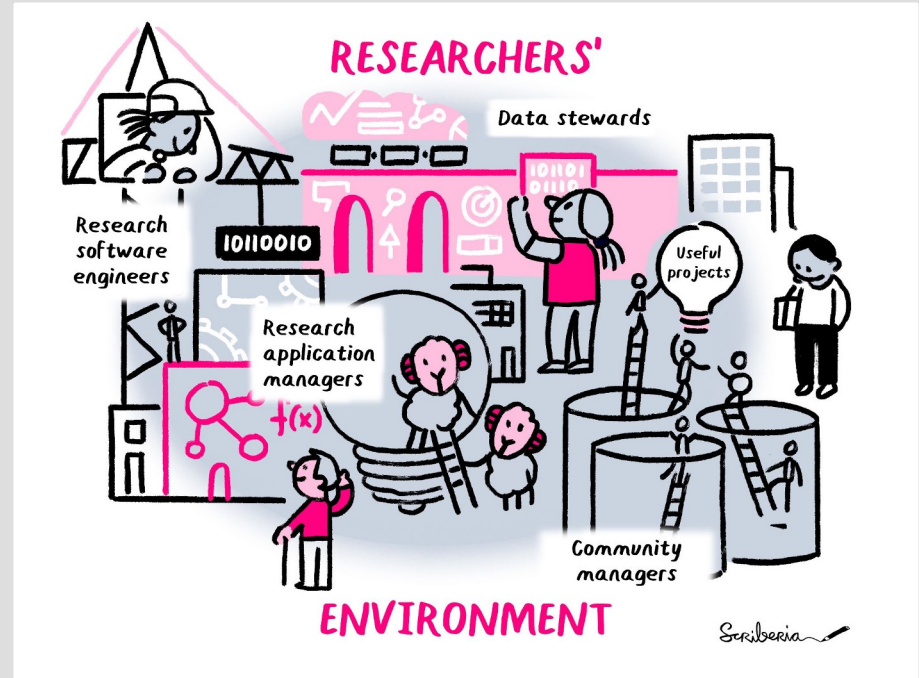
Tools, Practices, and Systems

- TPS drives culture change by promoting and modelling open working and a team science mentality
- TPS advocates for and disseminates best practices in interoperability, reproducibility and re-usability of research outputs



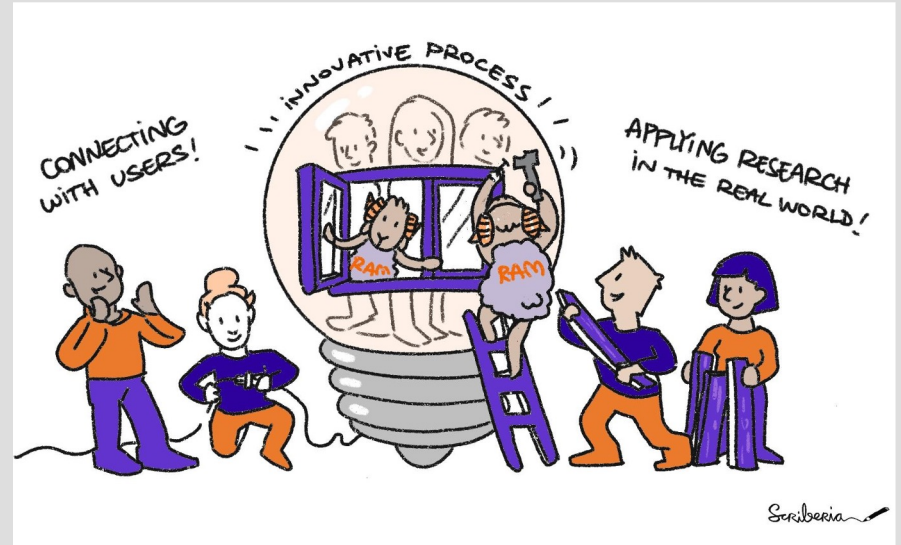
Team science

- Data Stewards
- Research Software Engineers
- Community Managers
- Research Application Managers (RAMs)



Research Application Managers

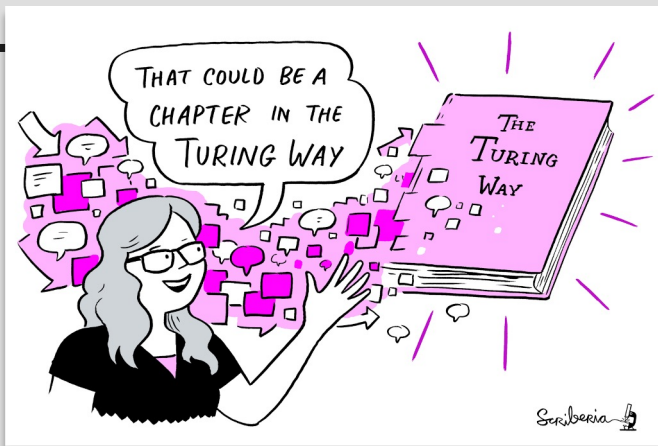
Research Application Managers (RAM) **enhance the real-world impact** of the research output by focussing on the user perspective



The Turing Way

An open source guide for Data Science

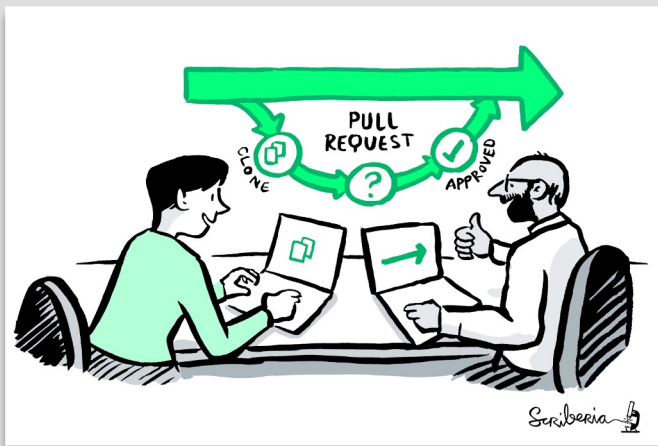
1. Exchange best practices for reproducible, ethical and collaborative research
2. Drive community-based development, maintenance and sustainability of research
3. Build interconnected systems of open software, data, communities and processes



A book



A global community

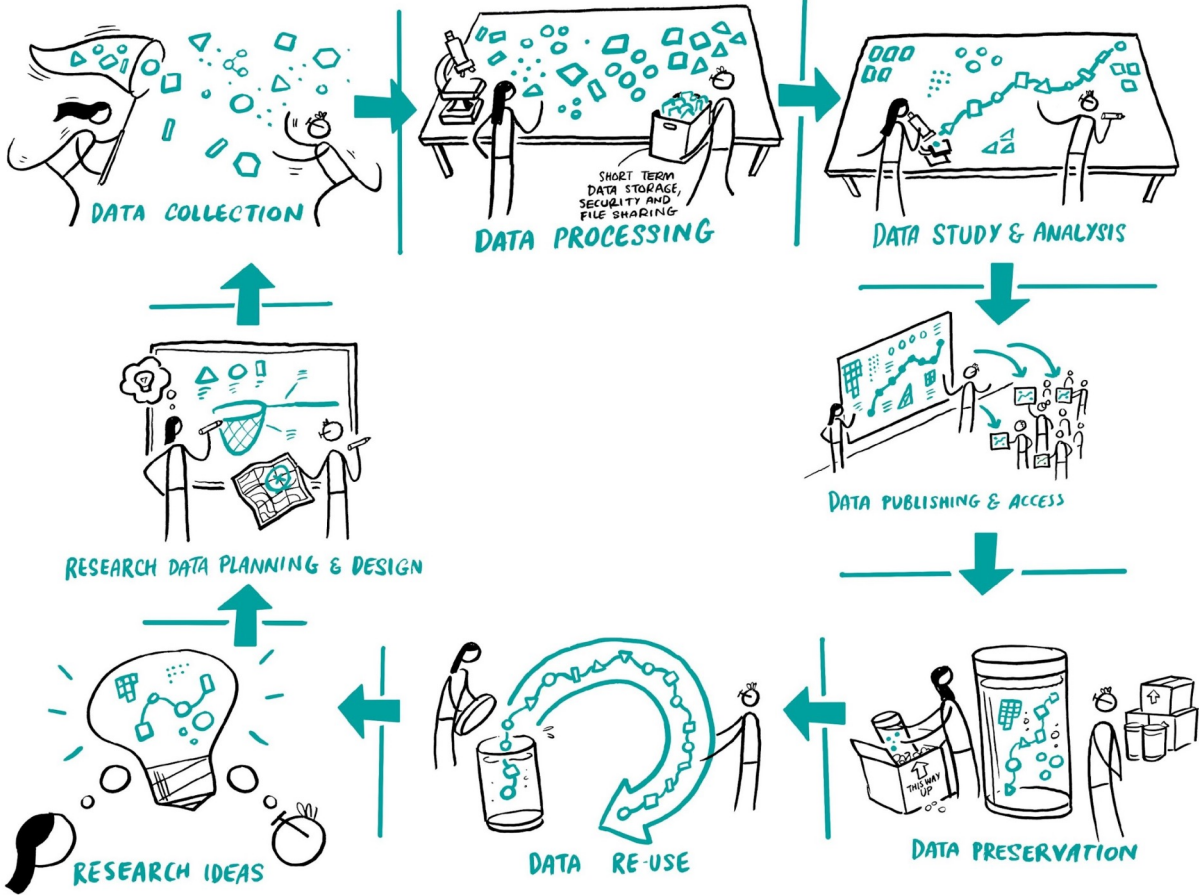


An open source project

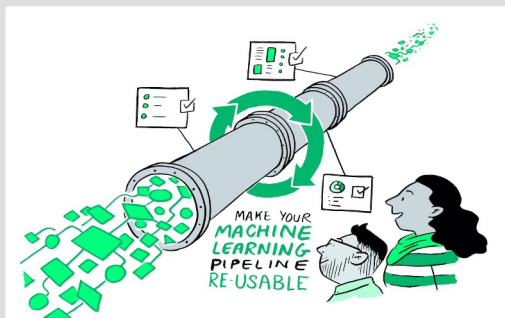


A culture of collaboration

		Data	
		Same	Different
Analysis	Same	Reproducible	Replicable
	Different	Robust	Generalisable



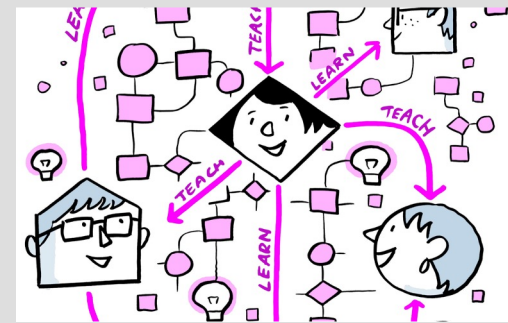
The Turing Way Guides



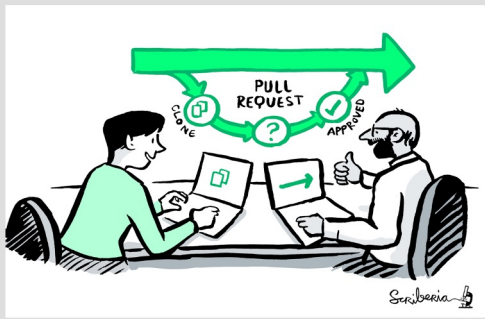
Reproducibility



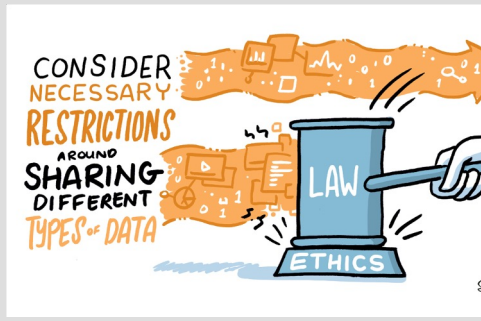
Project Design



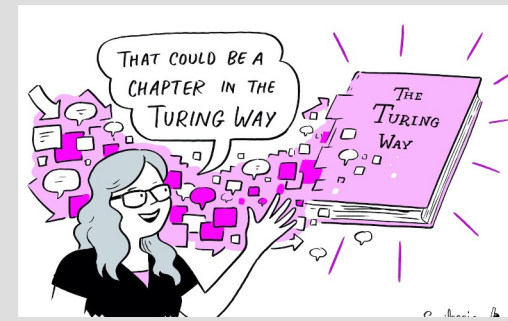
Communication



Collaboration



Ethical Research



Community Handbook

Collaborative community



Collaboration Cafes and
weekly coworking



Book Dash events (in-
person & virtual)

Collaborative community

We involve and support a **diverse community** to make data science **reproducible, ethical, collaborative and inclusive** for everyone

Pathways for Collaboration



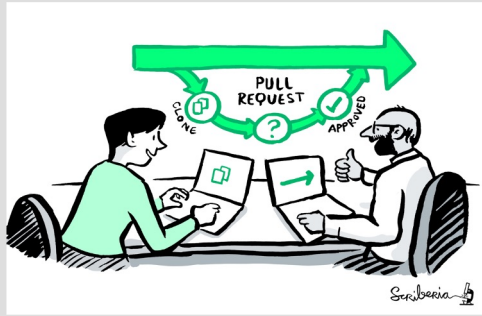
Develop & share



Maintain & improve



Share resources



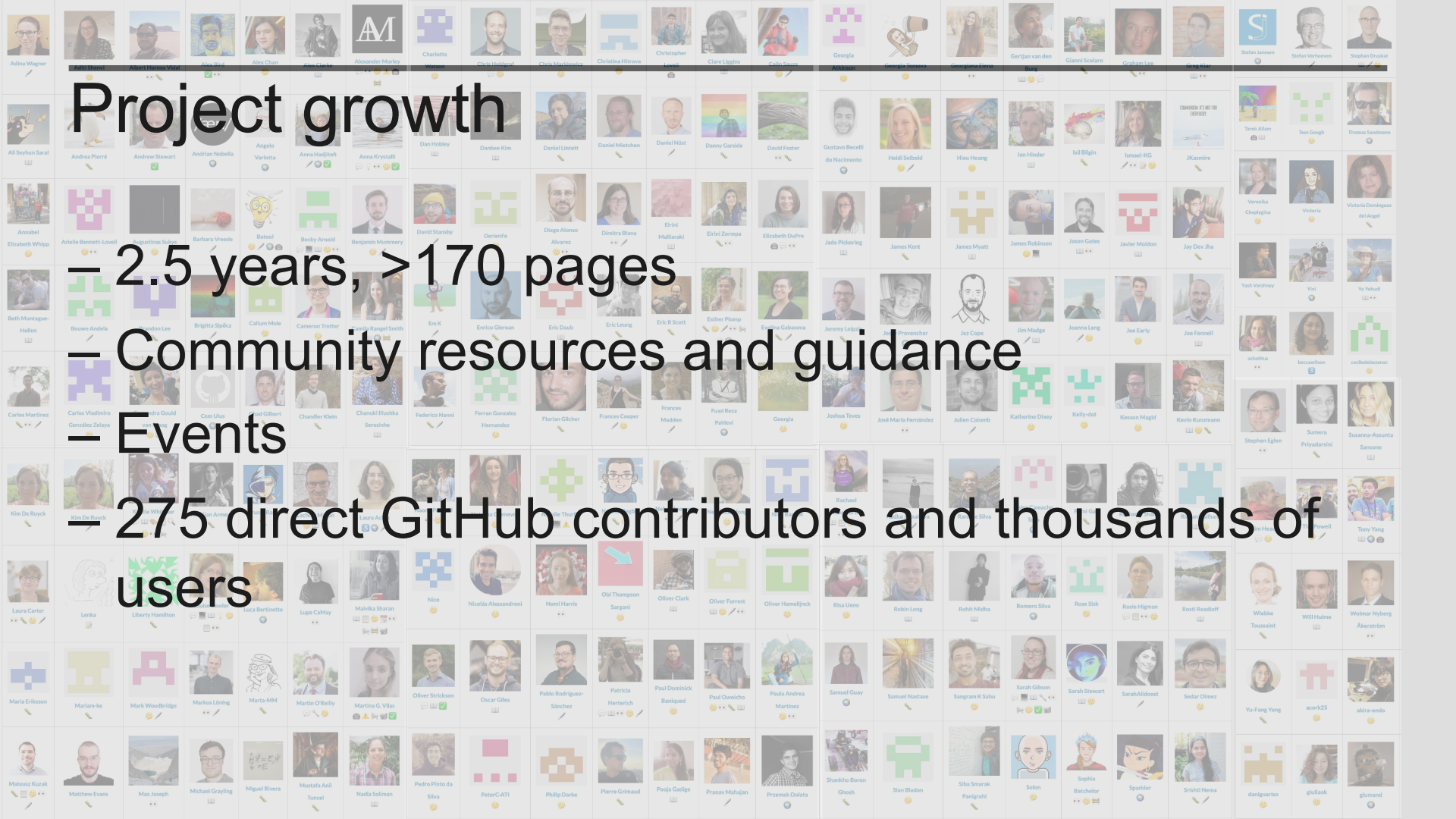
Review & update



Translate



Share best practices



Project growth

- 2.5 years, > 170 pages

- Community resources and guidance

- Events

- 275 direct GitHub contributors and thousands of users

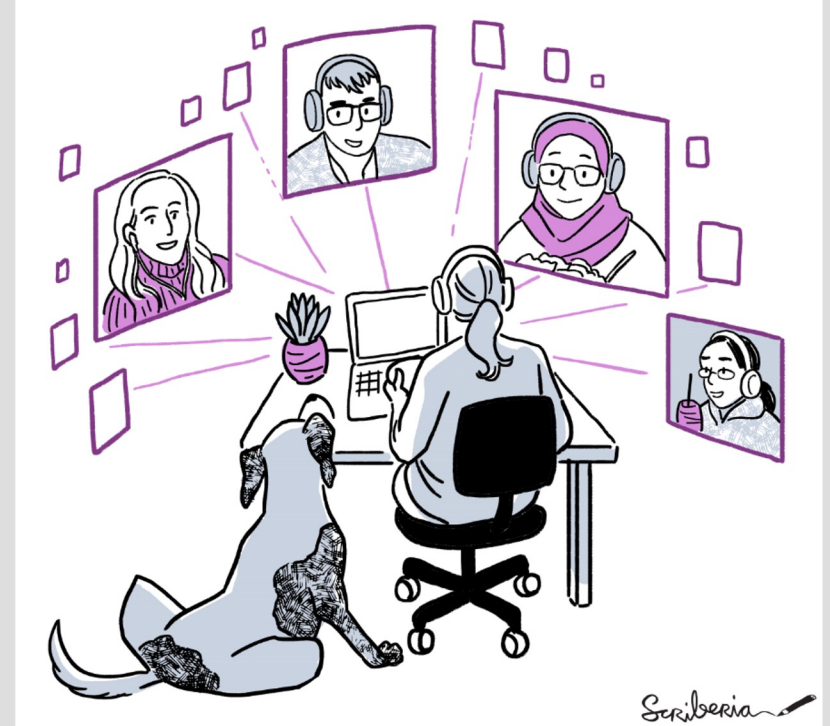
Notable impacts

Resources are being used by **learners, educators, community builders, policy makers and researchers** globally

- Featured in **Goldacre Review** for open working (2022)
- Highly-commended project in **The Hidden REF** Competition (2022)
- Reproducibility of scientific results in the **EU 2020 (report)**
- An Emerging Technology Charter by **Mayor of London (policy)**
- Innovation Scholars: **UKRI grant 2020 (funding)**
- CodeRefinery and Library Carpentries (training materials)
- Projects by data scientists including at the Office for National Statistics
- Cited by 20+ peer-reviewed articles & 20+ open source projects

Community events


- Collaboration cafes
 - 1st and 3rd Wednesdays 14:00 (UK)
- Coworking calls
 - Every Monday 11:00 (UK)
- Fireside chats
 - Final Friday of each month



Acknowledgements

- RAM team: Aida Mehonic, Jennifer Ding, Hari Sood
- Slides: Aida Mehonic, Alejandro Coca-Castro, TTW team
- TTW team: Kirstie Whitaker, Malvika Sharan, Anne Lee Steele
- Original artwork by Scriberia:
doi.org/10.5281/zenodo.3332807

Keep in touch!

- aconner@turing.ac.uk
- ram@turing.ac.uk
- [@turingway](https://twitter.com/turingway) 
- github.com/alan-turing-institute/the-turing-way
- the-turing-way.netlify.app
- Newsletter: tinyletter.com/TuringWay