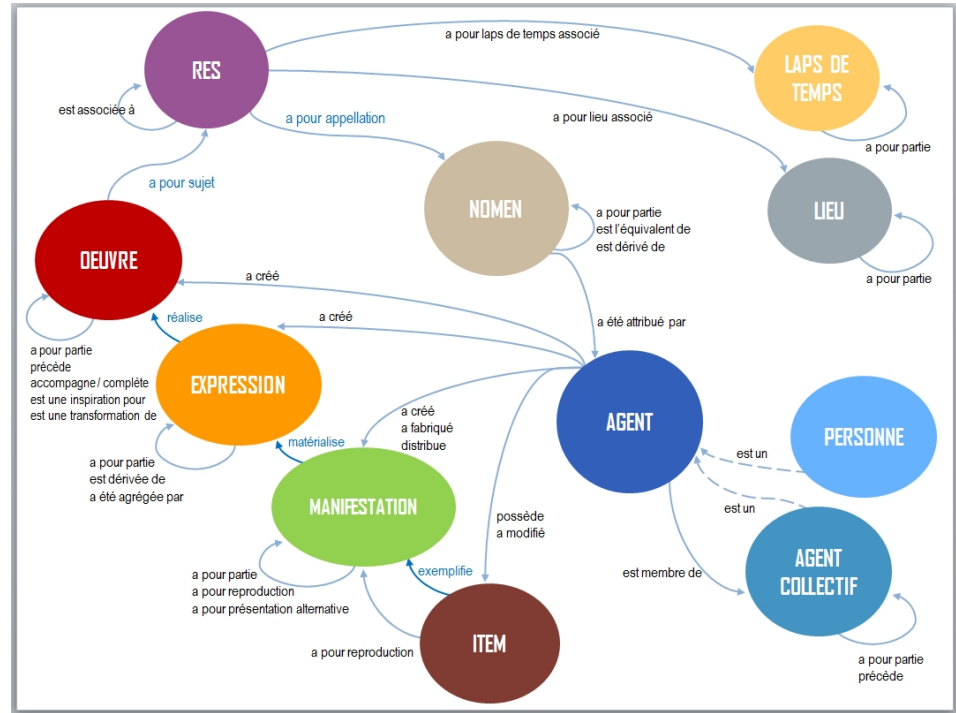
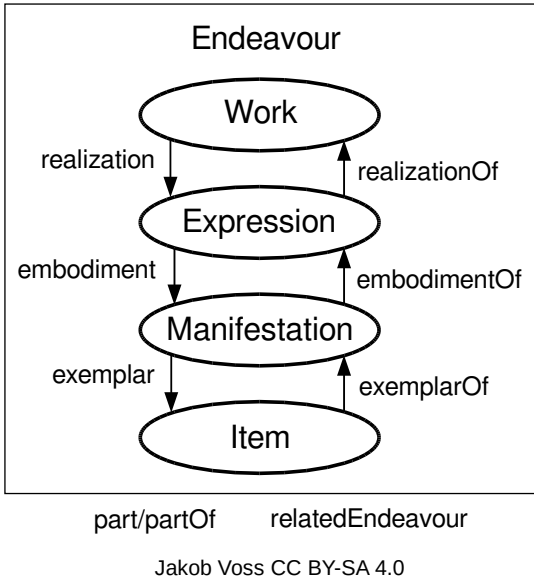
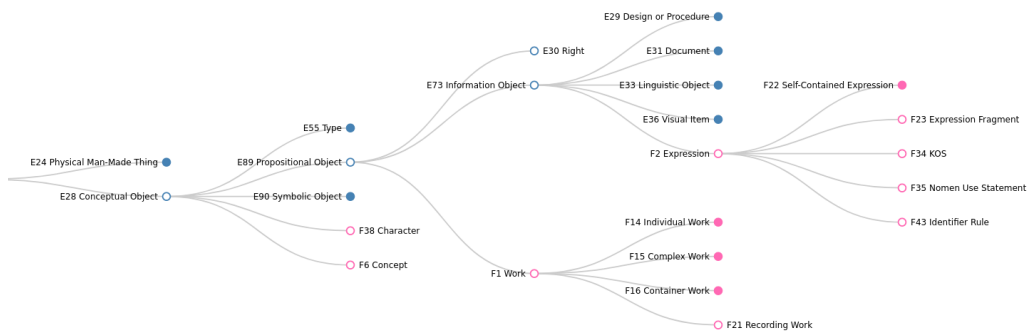


Des FRBR au IFLA LRM

Conceptualisation entité-relation de haut niveau pour la description des objets bibliographiques



L'intégration au web sémantique l'ontologie FRBRoo / LRMoo



Work – F1

FRBRoo version 2.4 Published

Summary Identification Definition Properties Namespaces Hierarchy Relations Profiles Graph Comments 0

F1 Work

Subclass of: [crm:E89 Propositional Object](#)

Superclass of: [frbroo:F14 Individual Work](#)
[frbroo:F15 Complex Work](#)
[frbroo:F16 Container Work](#)
[frbroo:F21 Recording Work](#)

Scope note: This class comprises distinct concepts or combinations of concepts identified in artistic and intellectual expressions, such as poems, stories or musical compositions. Such concepts may appear in the course of the coherent evolution of an original idea into one or more expressions that are dominated by the original idea. A Work may be elaborated by one or more Actors simultaneously or over time. The substance of Work is ideas. A Work may have members that are works in their own right.

A Work can be either *individual* or *complex*. If it is individual its concept is completely realised in a single F22 Self-Contained Expression. If it is complex its concept is embedded in an F15 Complex Work. An F15 Complex Work consists of alternative members that are either F15 Complex Works themselves or F14 Individual Works.

A Work is the product of an intellectual process of one or more persons, yet only indirect evidence about it is at our hands. This can be contextual information such as the existence of an order for a work, reflections of the creators themselves that are documented somewhere, and finally the expressions of the work created. As ideas normally take shape during discussion, elaboration and implementation, it is not reasonable to assume that a work starts with a complete concept. In some cases, it can be very difficult or impossible to define the whole of the concept of a work at a particular time. The objective evidence for such a notion can only be based on a stage of expressions at a given time. In this sense, the sets of ideas that constitute particular self-contained expressions may be regarded as a kind of "snap-shot" of a work.

A Work may include the concept of aggregating expressions of other works into a new expression. For instance, an anthology of poems is regarded as a work in its own right that makes use of expressions of the individual poems that have been selected and ordered as part of an intellectual process. This does not make the contents of the aggregated expressions part of this work, but only parts of the resulting expression.

Examples:

- Abstract content of Giovanni Battista Piranesi's 'Carcere XVI: the pier with chains: 1st state' (F14)
- 'La Porte de l'Enfer' by Auguste Rodin conceived between 1880 and 1917 (F15)
- 'Hamlet' by William Shakespeare (F15)

In First Order Logic: $F1(x) \supset E89(x)$

Outgoing properties:

- [frbroo:R1](#) is logical successor of (has successor) → [frbroo:F1 Work](#)
- [frbroo:R40](#) has representative expression (is representative expression for) → [frbroo:F22 Self-Contained Expression](#)
- [frbroo:R2](#) is derivative of (has derivative) → [frbroo:F1 Work](#)
- [frbroo:R3](#) is realised in (realises) → [frbroo:F22 Self-Contained Expression](#)

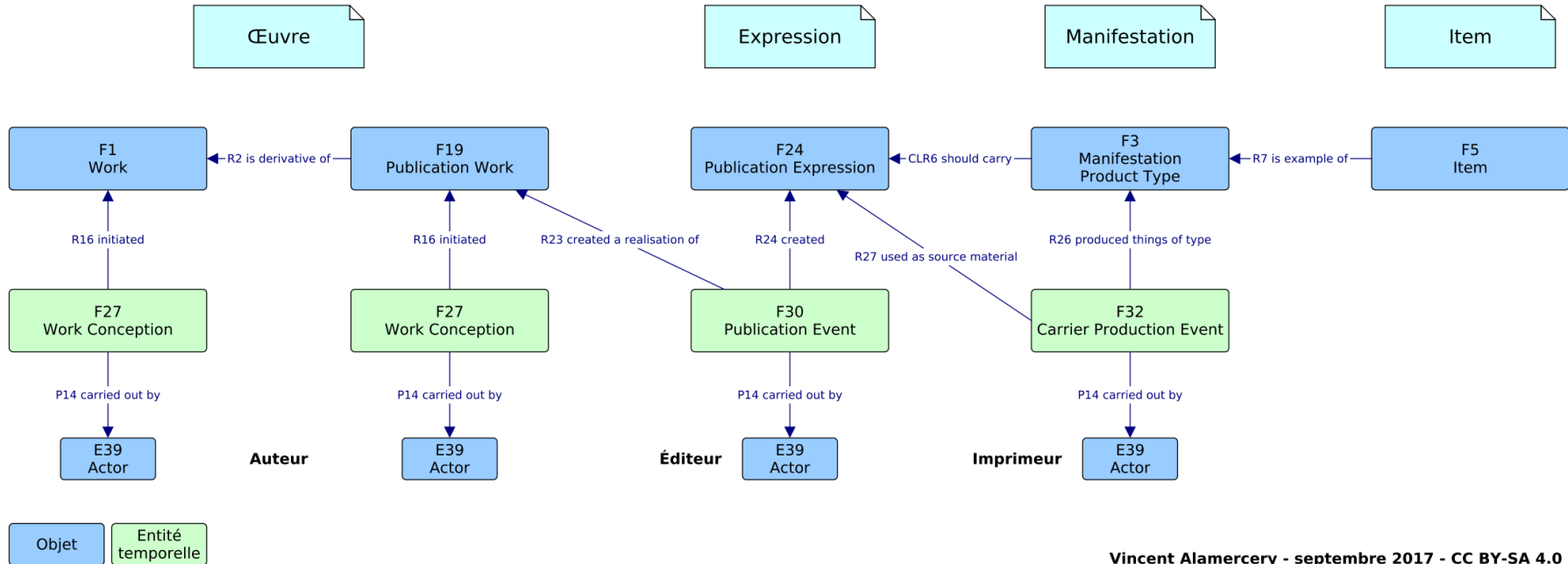
Incoming properties:

- [frbroo:F1 Work](#) → [frbroo:R1](#) is logical successor of (has successor)
- [frbroo:F28 Expression Creation](#) → [frbroo:R19](#) created a realisation of (was realised through)
- [frbroo:F27 Work Conception](#) → [frbroo:R16](#) initiated (was initiated by)
- [frbroo:F15 Complex Work](#) → [frbroo:R10](#) has member (is member of)
- [frbroo:F1 Work](#) → [frbroo:R2](#) is derivative of (has derivative)

<https://ontome.net/namespace/13>

Modéliser la bibliographie en FRBRoo

De l'œuvre destinée à la publication à l'exemplaire imprimé

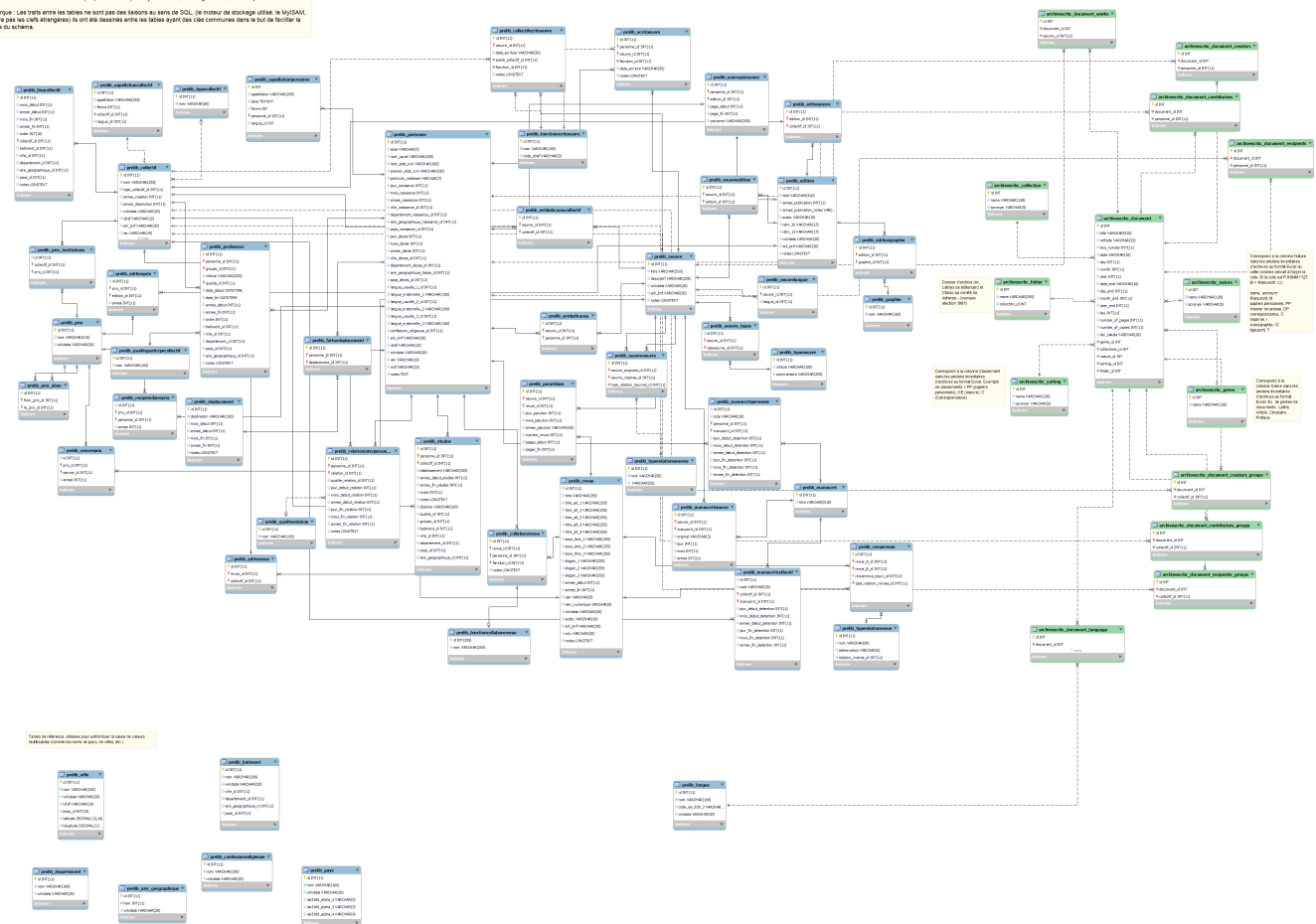


PRELIB

Projet de recherche
en littérature de langue bretonne



Schéma conceptuel de la base de données "Projet de recherche en littérature bretonne" - version du 19 mai 2022
Centre de recherche Bretonne et Celtique (CRBC) - Nelly Blanchard, Manng Thomas, Jean-Sebastien Prévost
Remarque : Les traits entre les lettres ne sont pas des liaisons au sens de SQL, de moteur de stockage de données, ni MySQL, ni rien d'autre, ils sont utilisés entre les lettres pour les liens communs dans le but de faciliter la lecture du schéma.



<https://crbc-dataset.huma-num.fr/prelib>

Au cœur du projet ANR HisArc-RDF : partager et réutiliser les données de la recherche.

Exemple de l'alignement du modèle PRELIB.

prelib_oeuvre

id, titre, descriptif, wikidata, ark_bnf

4,157 rows

Alignement proposé : [frbroo:F2 Expression](#)

Question : pour lier la langue à l'expression, les recommandations du FRBR sont d'instancier les objets à la fois à F2 Expression et à E33 Linguistic Object, ces deux classes étant des E73 Information Object.

Question JBP : Pour les personnes et les collectifs, c'est l'URI de la ressource sur IdRef qui a été retenue. Mais quid des oeuvres ?

Réponse VA : l'id utilisé par le SUDOC renvoie à l'édition et non à l'œuvre (en fait expression ici). Il faudra demander à François.

Original	Alignment	Notes
id		
titre	frbroo:F2 crm:P102 has title crm:E35 Title	
descriptif	frbroo:F2 crm:P3 has note crm:E62 String	Beaucoup de descriptifs sont en fait des types.
wikidata	frbroo:F2 crm-sup:P20 same as URI crm:E42 Identifier	E42 Identifier doit être une URI, ex : https://www.wikidata.org/wiki/Q7763577
ark_bnf	frbroo:F2 crm-sup:P20 same as URI crm:E42 Identifier	E42 Identifier doit être une URI, ex : https://catalogue.bnf.fr/ark:/12148/cb12456874c

prelib_edition

id, titre, annee_publication, annee_publication_notes, sudoc, isbn_10, isbn_13, wikidata, ark_bnf

2,647 rows

Alignement proposé : [frbroo:F3 Manifestation Product Type](#)

Original	Alignment	Notes
id		
titre	frbroo:F3 crm:P102 has title crm:E35 Title	
annee_publication	frbroo:F3 sdh-int:P2 was created by sdh-int:C1 Expression Publication Event crm:P4 has time span crm:E52 Time-Span crm:P82 at some time within crm:E61 Time Primitive	
annee_publication_notes	frbroo:F3 sdh-int:P2 was created by sdh-int:C1 Expression Publication Event crm:P4 has time span crm:E52 Time-Span crm:P82 at some time within crm:E61 Time Primitive	Séparer les notes telles que "?* ?s.d." d'intervalles de temps telles "entre 1800 et 1810" qui peuvent être renseignées en utilisant les propriétés d'Allen (P82). Dans la mesure du possible, il est préférable de postuler une date de publication même au siècle près.
sudoc	frbroo:F3 crm-sup:P20 same as URI crm:E42 Identifier	E42 Identifier doit être une URI, ex : https://www.sudoc.fr/227828879
isbn_10	frbroo:F3 crm:P48 has preferred identifier crm:E42 Identifier crm:P2 has type "ISBN 10"	
isbn_13	frbroo:F3 crm:P48 has preferred identifier crm:E42 Identifier crm:P2 has type "ISBN 13"	
wikidata	frbroo:F3 crm-sup:P20 same as URI crm:E42 Identifier	E42 Identifier doit être une URI, ex : https://www.wikidata.org/wiki/Q7891907
ark_bnf	frbroo:F3 crm-sup:P20 same as URI crm:E42 Identifier	E42 Identifier doit être une URI, ex : ark:/12148/cb342970464

<https://github.com/Semantic-Data-for-Humanities/prelib-to-rdf>

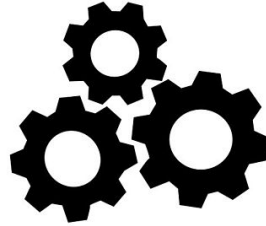
F
Findable



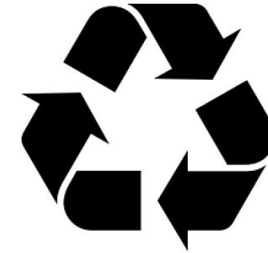
A
Accessible



I
Interoperable



R
Reusable



Produire des données sémantiquement claires permet à d'autres de les comprendre et de les réutiliser.

Comprendre les données existantes permet de les réutiliser.