



Universität
Basel

Forschungsdatenmanagement- Trainings und -Support an der Universität Basel

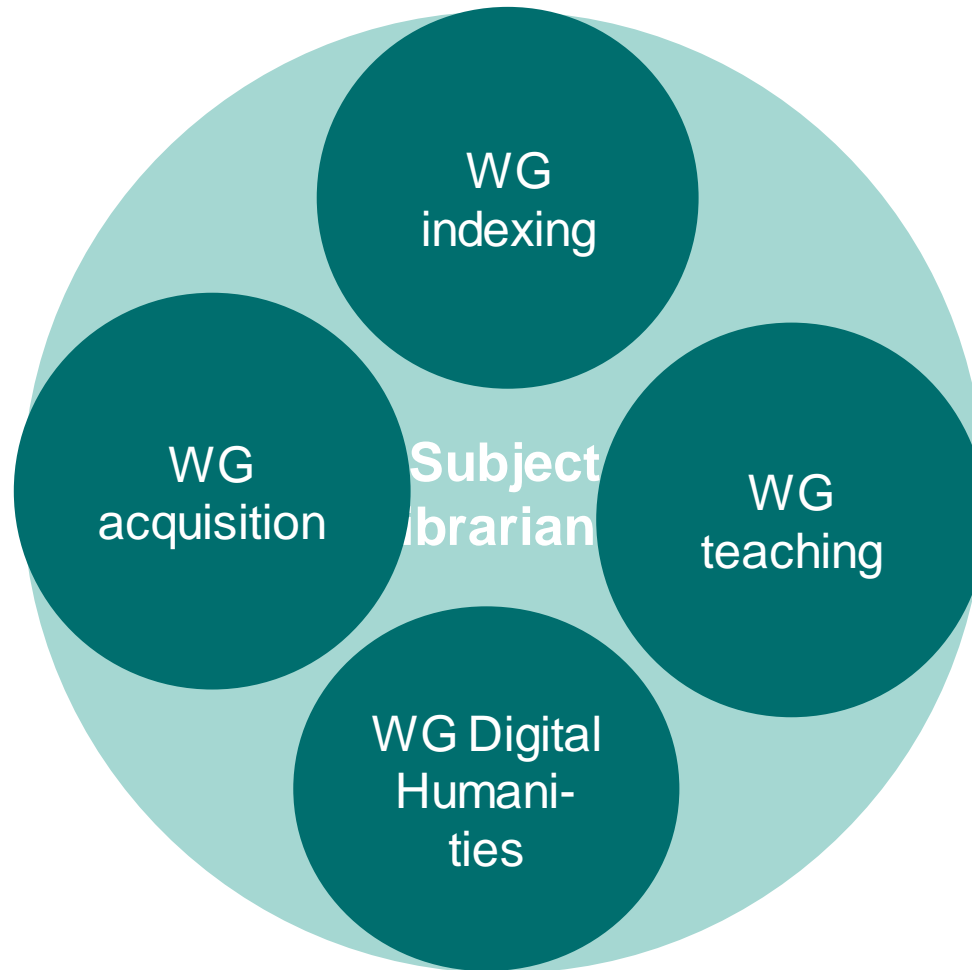
AGIK, Workshop Dateninformationskompetenz, 23. Juni 2022

Christina Besmer
Iris Lindenmann

Agenda

-
- 1 Player and training offers at the University Library of Basel
 - 2 Research data management support
 - 3 Data Stewardship programme
-

Working groups (WG) of subject librarians



WG Digital Humanities

Pilot project in spring semester 2022

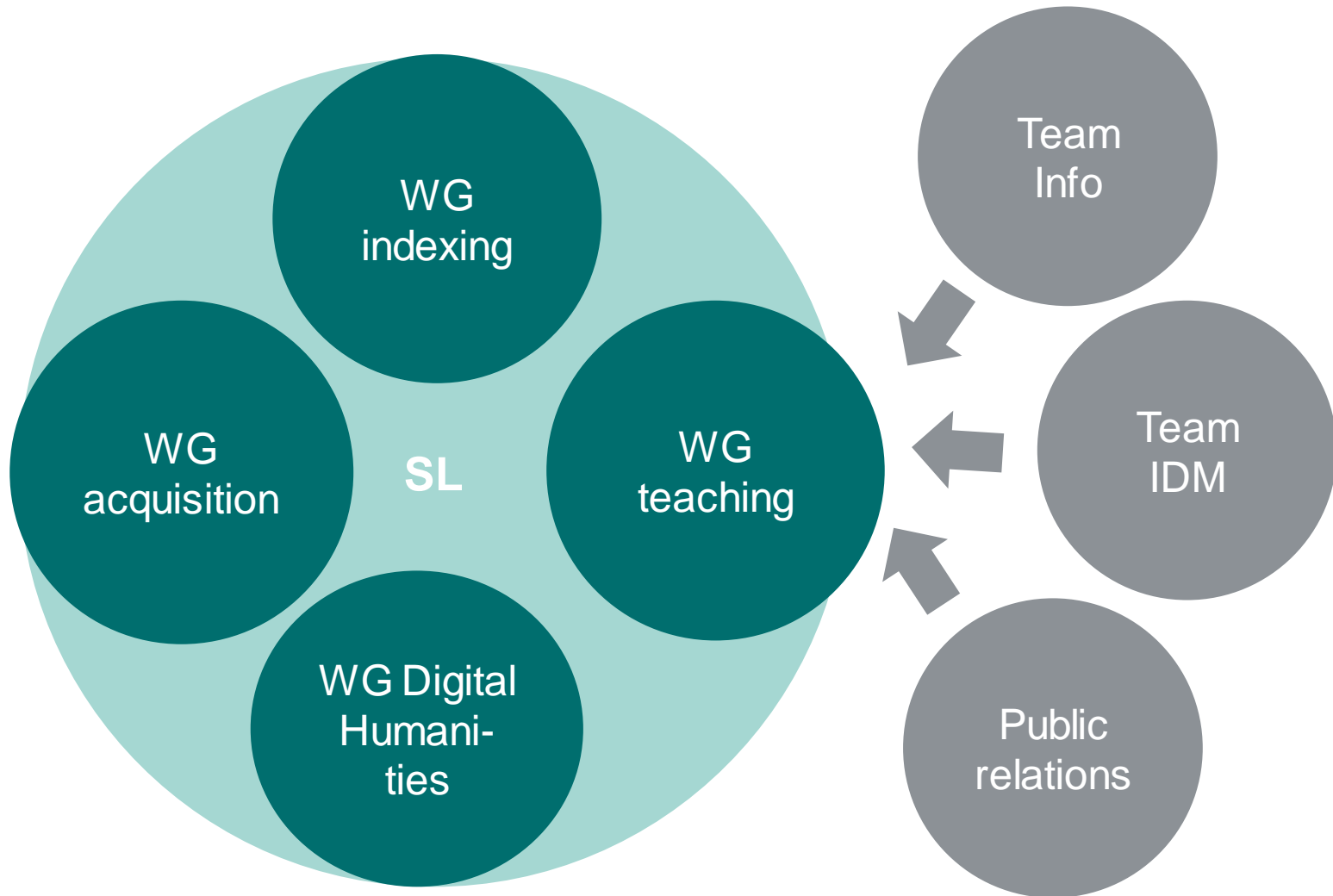
Research seminar: "If you want, it's not a fairy tale" - Digital methods for research on the first Zionist congresses.

- Cooperation with Erik Petry, Prof. for Jewish Studies.
- Introduction to digital research methods in humanities on the basis of a corpus of historical sources from the University Library.
- Focus on practical work with various methods and tools from the Digital Humanities.
- In addition, best practices in search methods and data management.
- In-depth exploration of specific methods in a project (submission at the end of July).
- The results of the projects will be published on a digital platform.

Schedule for the semester

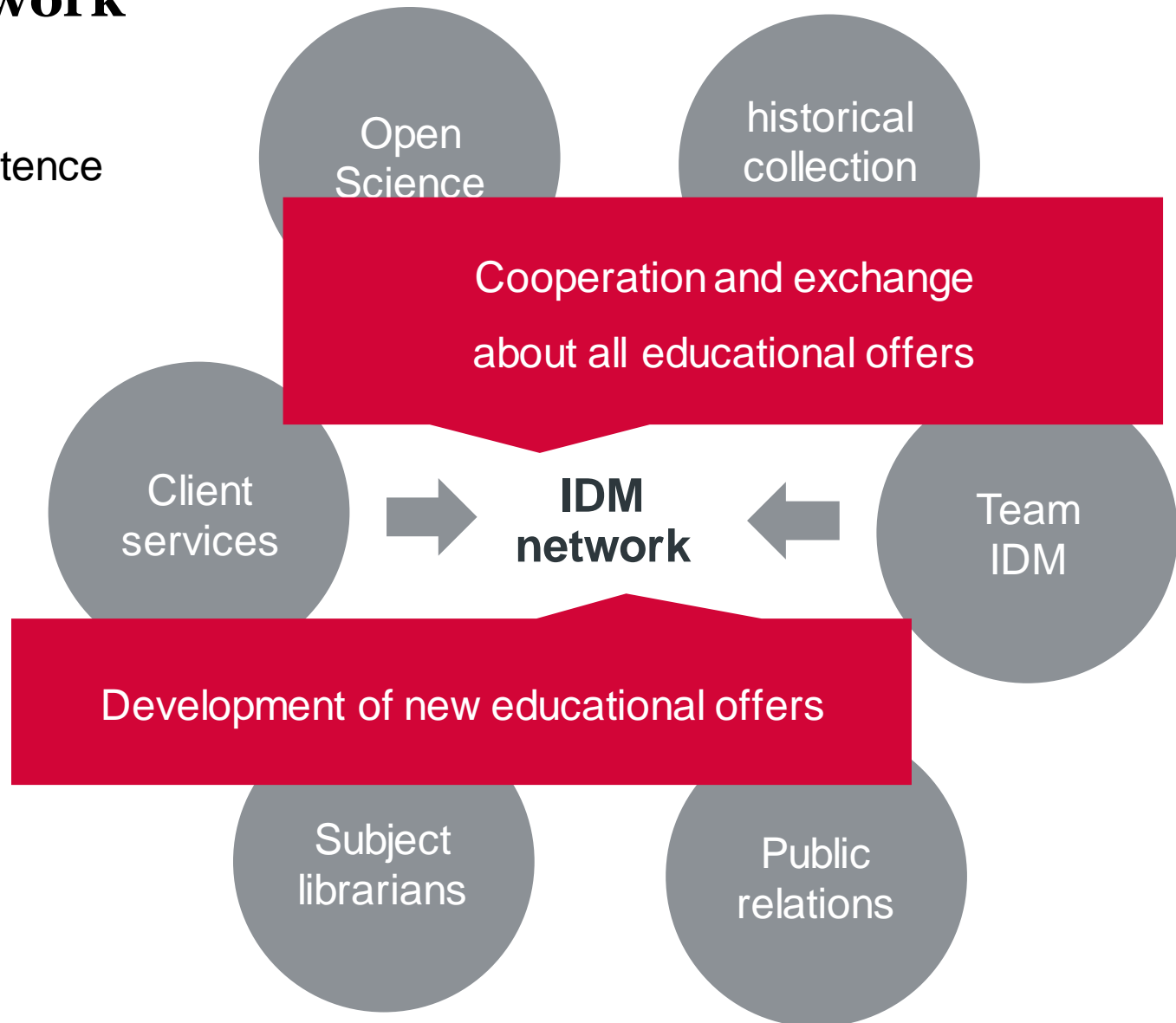
Date	Topic
23.02.	Introduction and organisational matters
02./16.03.	Search methods and research organization
23.03.	Digital sources, digital storytelling
30.03.	Geodata and digital representation; guest speaker: Loris Sauter "GoFind"
06.04.	Transcription und text analysis
13.04.	Ad Fontes: Sources from the University Library
20.04.	Digital Humanities and Jewish studies
27.04.	Tour through the Digitisation Centre of the University Library
Until end of May	Independent work on the projects, presence by appointment
21.05.	Full-day block event: Presentation of project ideas, state of work

Working group teaching («Vermittlung»)

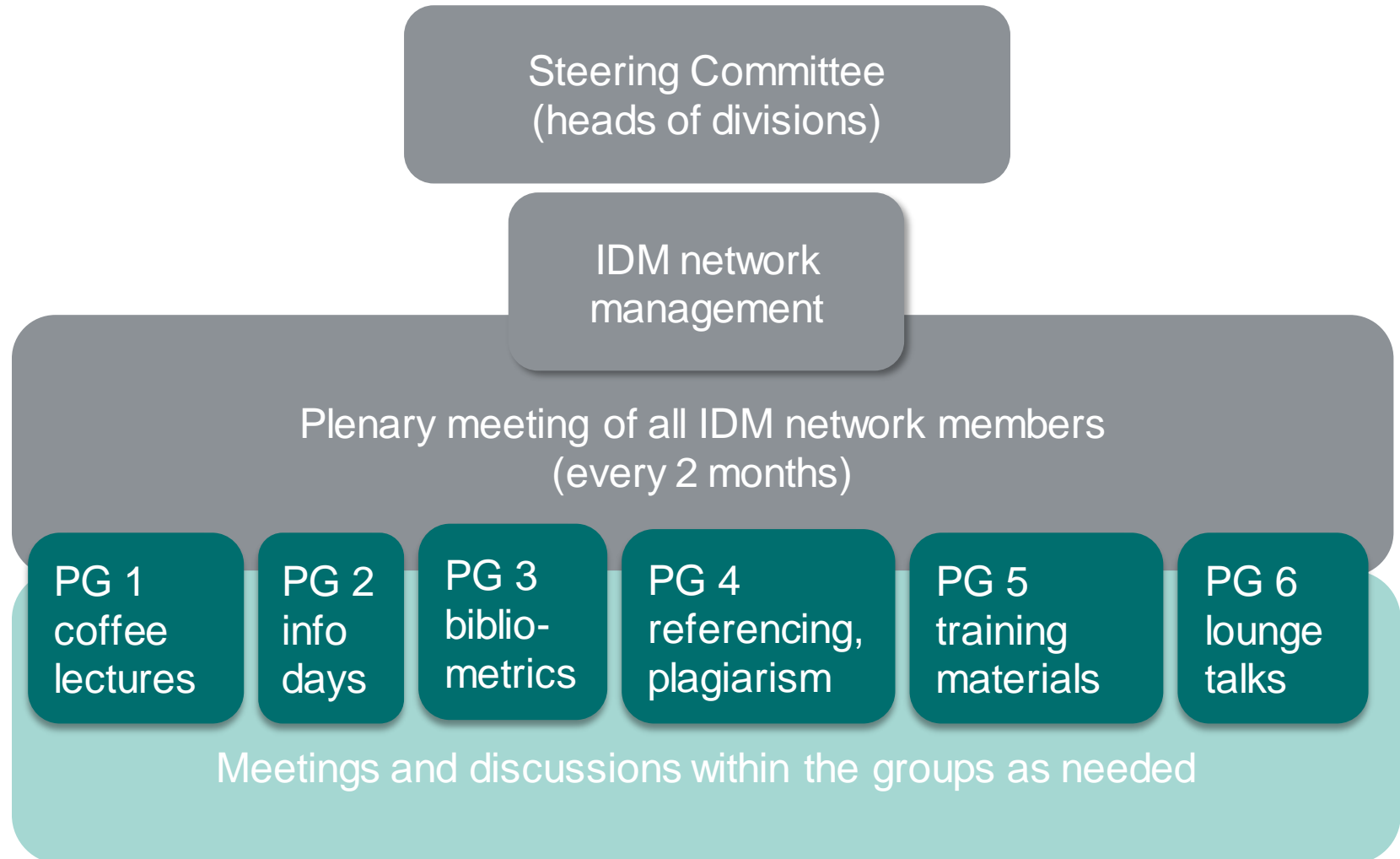


IDM network

Information,
Data and
Media competence



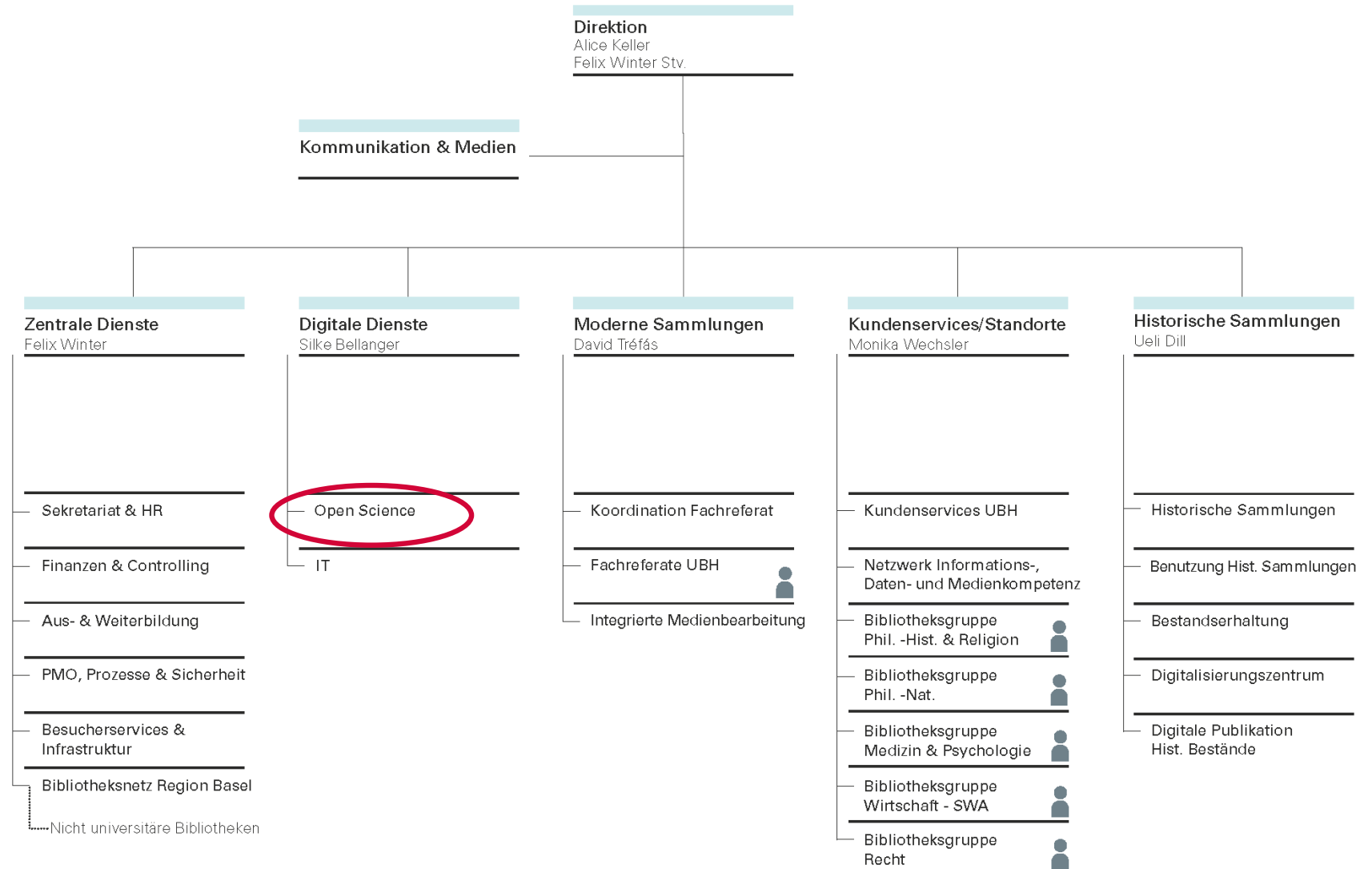
Organisation



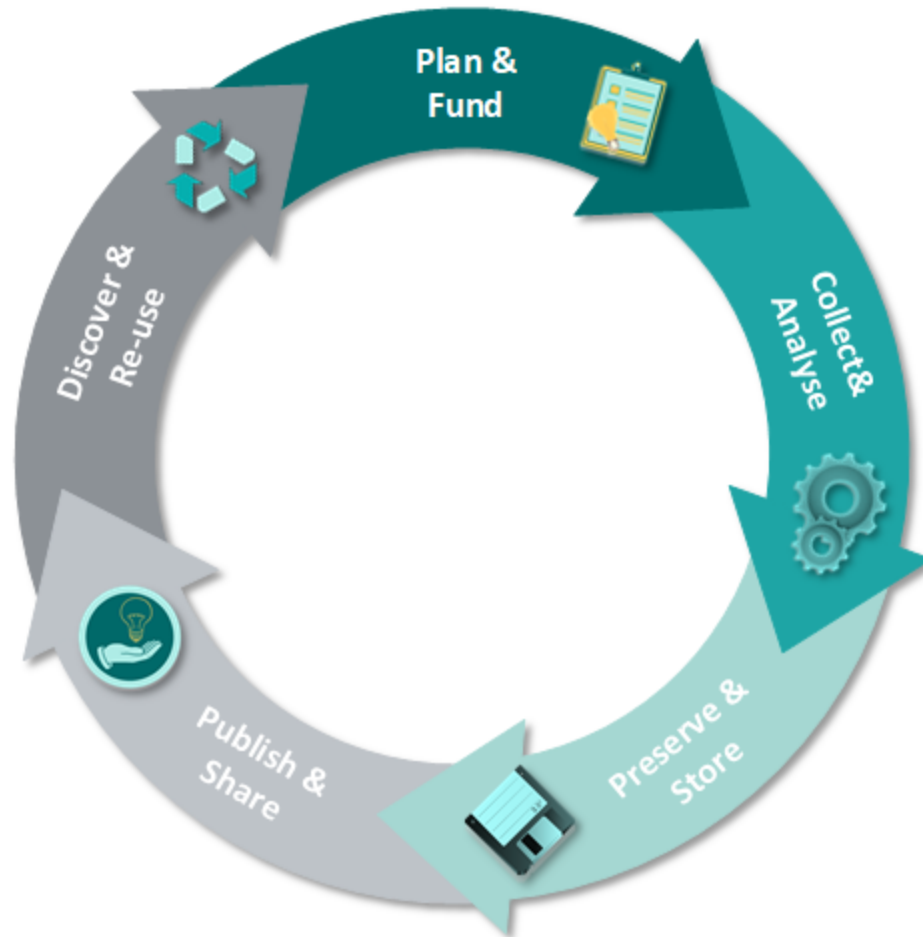


Universität
Basel

Research data management support



What is Research Data Management (RDM)?



Research Data Management Network at the University of Basel

- Vice President's Office for Research
- sciCORE
- University Library
- Grants Office
- IT-Services
- Decentralized research support IT
 - Research IT, Biozentrum
- Imaging Core Facility (IMCF)
- Center for Data Analytics
- Core Facilities at the Department of Clinical Research (DKF)
- Legal Services
- Data protection officer
- University Ethics Committee
- RISE (Research & Infrastructure Support)



The Research Data Management Network at the University of Basel

Various people and organizational units from across the university provide services for researchers throughout all the steps in the life cycle of data. Close collaboration between them within a strong network is essential to ensure efficient and optimal support for researchers.

Data-management plans
University Library, DaSCH, Biozentrum Research IT, Department of Clinical Research

Grant applications
Grants Office

Cost estimates regarding IT infrastructure
Biozentrum Research IT, ITServices, sciCORE, Department of Clinical Research

Data-protection technology and workflows
Information Security Officer

Data protection law, informed consent
Data Protection Officer

Copyright and intellectual property issues, contracts
Legal Service

Ethical questions
University Ethics Committee (UEK), Regional ethics commission (EKNZ), Department of Clinical Research

Advice on legal and regulatory requirements for clinical studies
Department of Clinical Research

Secondary data, systematic reviews
University Library, Department of Clinical Research

Search interface, API for data in the humanities
DaSCH

Infrastructure for high-volume data, CPU-intensive simulations, web services, and data analysis
sciCORE, IT Services

Scan service for originals (artwork, papyri, photographs),
DHLab

Digitization service for historical collections
University Library

Virtual research environments
DaSCH

Data science and data analysis
Center for Data Analytics CeDA

Infrastructure and processes for data collection and processing
IT Services, DHLab, Biozentrum Research IT, sciCORE

Infrastructure for clinical studies
Department of Clinical Research

Storage infrastructure
IT-Services, sciCORE

Storage, workflows, data curation for life sciences
Biozentrum Research IT

long-term repository for the humanities
DaSCH

Documentation, metadata (standards), standardized vocabularies, archiving
University Library

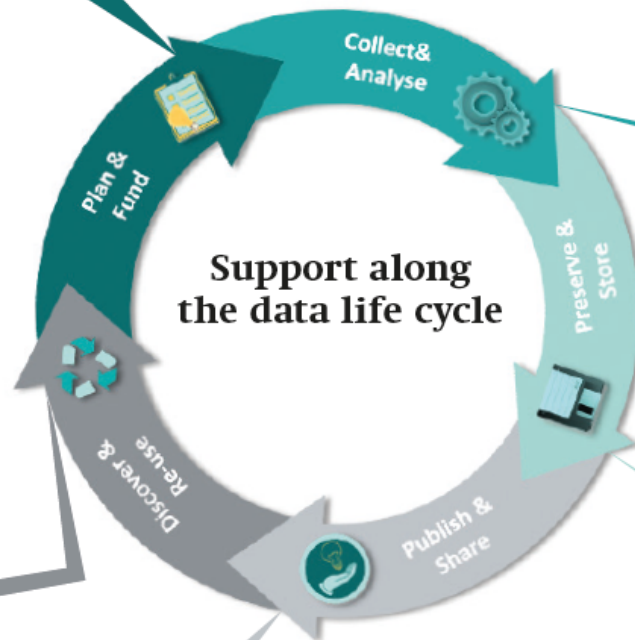
Secure environment for sensitive data
sciCORE, IT Services

Infrastructure for clinical studies
Department of Clinical Research

Platforms for research data in the humanities
DaSCH

Data publication in repositories or journals
University Library

Legal aspect of (data) publication
Legal Services, Data-protection officer



Support along the data life cycle



Research Data Management

This is the main data portal of the University of Basel. This web site provides pointers to key resources and partners at University of Basel who can help you organize and manage your research data.



Planning

Data management plans are requested as part of most grant applications.



Legal and ethical issues

Legal and ethical issues can arise in every phase of a research project.

Latest news

No news available.

Trainings & Events

No news available.

[More Trainings & Events ...](#)



Training and support

- Introductions and workshops on RDM
 - as part of workshops/events
 - from 90 minutes up to three days
- Advice and feedback on Data Management Plans
- Advice for research projects on data management, especially for documentation, metadata and metadata standards

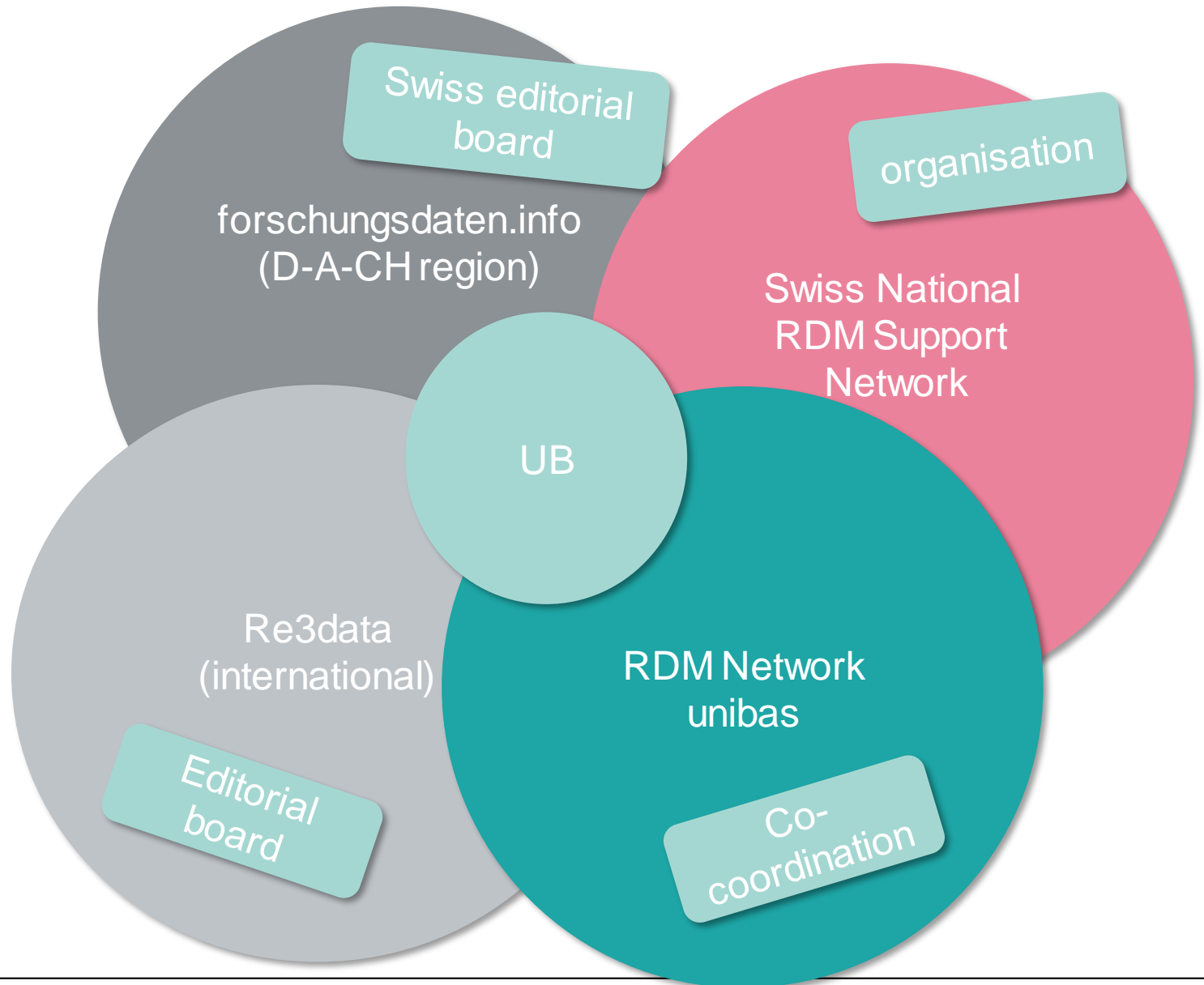
Programme «Research Data Management in the Social Sciences and Humanities», Oct./Nov. 2022

Time	Topic	Lecturer
25.10.2021	Introduction to Research Data Management	Silke Bellanger (Open Science, University Library Basel)
	Research Data Management and Data Protection	Danielle Kaufmann & Pascal Tamm (Data Protection Office, University of Basel)
	Information Security	Jan Welker (IT-Services, University of Basel)
01.11.2021	Anonymizing your data in practice	Brian Kleiner, Alexandra Stam (FORS)
	What is a data set and how do I create it?	Eric Decker (RISE, University of Basel)
	FAIR Data	Silke Bellanger (Open Science, University Library Basel)
08.11.2021	Research Data Management – Copyright Questions	Anna Picco, Suzanne Marazza (Competence Center in Digital Law)
	Data Publication in detail – examples and best practices	Rita Gautschy (DaSCH), Silke Bellanger (Open Science, University Library Basel)
	Data Management Plans revisited	Silke Bellanger (Open Science, University Library Basel)

Programme «How to deal with your data: Research Data Management», May 2022

Date	Topic	Lecturer
19.05.2022	General Introduction: Research Data Management, Research Data Lifecycle, FAIR Data	Silke Bellanger, University Library
	Data protection	Iris Lindenmann, University Library, with slides of DPO
	Electronic Lab Notebooks: Biozentrum-wiki	Michael Podvinec, Research IT, Biozentrum
	Images & microscopy data	Oliver Biehlmaier, Imaging Core Facility, Biozentrum
	Biomedical data & Research Data Management	Thierry Sengstag, sciCORE
20.05.2022	Laboratory Management System: Lab Key demo	Sofia Georgakopoulou, sciCORE
	Data Management Plans	Iris Lindenmann, University Library
	Exercise: your research data workflow	Silke Bellanger, University Library

Networks in the context of RDM





Universität
Basel

Data Stewardship Programme

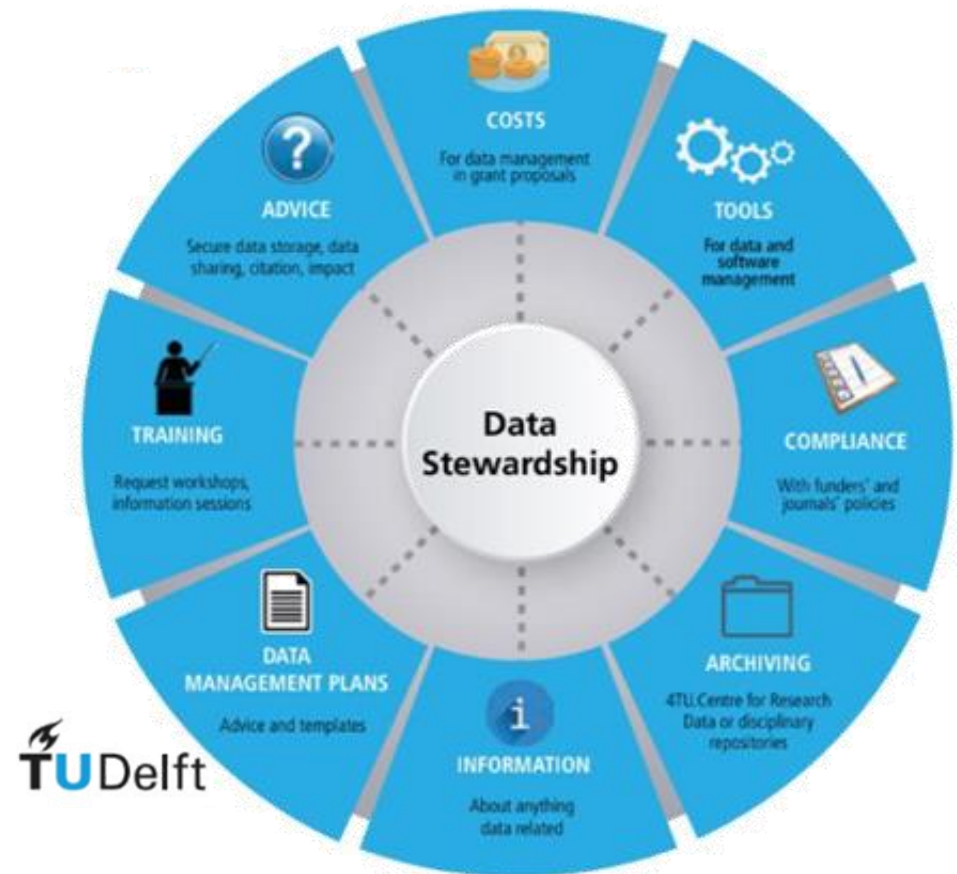
Pilot Project Data Stewardship Programme

- Two-year pilot project
- Official start of the programme with kick-off event on 30 September 2021
- Extra funds provided by the rectorate of the University
- Funds for the coordination of the programme (0.2 full-time equivalents) and for the implementation of courses for the data stewards (train-the-trainer)
- Coordination of the programme: Open Science Team of the University Library: 20 % temporary project position + ~40% within the limits of existing employments

What do we mean by data stewards?

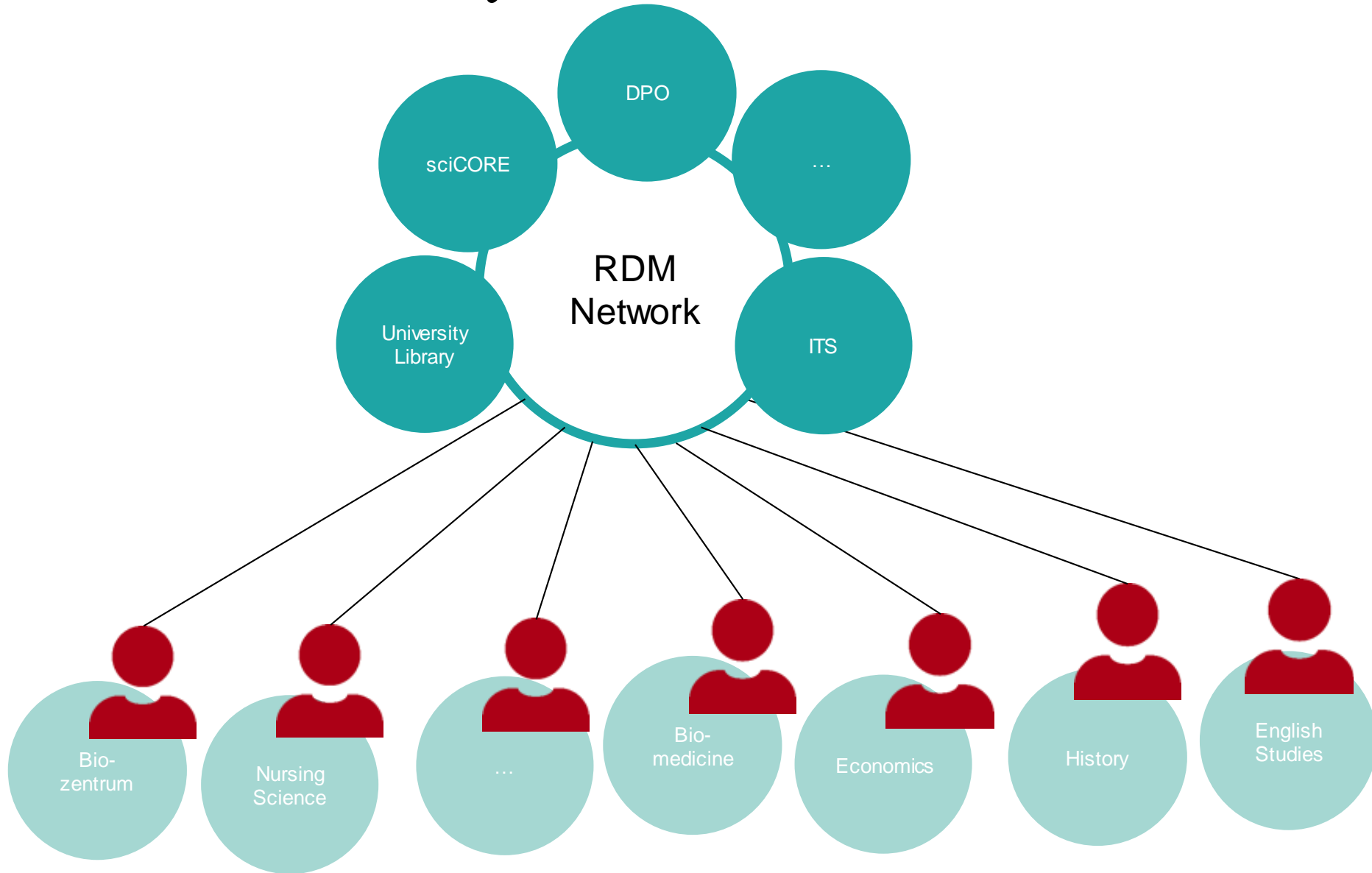
At the University of Basel, a data steward is a role that provides **subject-specific** advice on research data management.

- First point of contact and support for researchers
- Advice, support, referral to other persons and service units
- Links between subject-specific and general support



Graphic: <https://www.openaire.eu/blogs/setting-up-a-data-stewardship-programme-an-institutional-perspective>; 29.03.2021

What do we mean by data stewards?



Who should take on the role as data stewards?

Personnel with ...

- intermediary role between subject discipline and research-related services
- discipline-related doctorate and/or research experience and/or several years of research-related service in the respective discipline-specific context
- strong willingness to engage in relevant fields of research data management, including privacy and information security issues
- knowledge of research software in their fields of expertise
- excellent communication, reflection and teamwork skills
- strong service mentality
- trusted position within the institution, compatible employment relationship (not BA/B.Sc., MA/M.Sc. or PhD students)



Image: https://commons.wikimedia.org/wiki/Category:Eierlegende_Wollmilchsau?uselang=de#/media/File:Wollmilchsau.jpg

Recruitment of the Data Stewards

- Recruitment of data stewards mainly from June to September 2021 (in advance of the kick-off event)
- Top-down approach: Written contact and discussions with deans and research deans of the individual faculties
- Bottom-up: In addition, we were contacted by interested persons.
- Ongoing onboarding of further data stewards after kick-off



Graphics: pixabay.com

Status Quo

- 3/4 years duration of the programme
- Recruitment of 22 data stewards
- 2 semester training programme
- April & May 2022: meetings with all data stewards on current status and next steps

Who are the data stewards?

- 22 Data Stewards
- Other interested persons who (occasionally) participate in the training programme for the Data Stewards
- Large differences between the various faculties and departments
 - In certain departments teams, in others single persons, in others no data stewards (yet) at all
 - Both service providers and researchers as data stewards
 - Varying levels of prior knowledge and experience with RDM



Graphic: pixabay.com

Who are the data stewards?



The screenshot shows the top navigation bar of the University of Basel website. It features the university's logo and name on the left, followed by the text "Research Data Management-Network University of Basel". Below this is a horizontal menu with the following items: "Planning", "Legal issues", "Active research", "Sharing", "Storage", and "Services". The "Services" item is highlighted with a red underline. Below the menu is a breadcrumb trail: "Home > Services > Data Stewardship programme".

Data stewardship

At the University of Basel, data stewards are people who offer subject-specific support for research data management. They are the first point of contact for researchers in their respective subject area. In addition to providing direct advice and support, they also serve as a link to other bodies that offer general support in the area of RDM. They ensure that subject-specific needs are known throughout the Research Data Management Network at the University of Basel and that transferable solutions can be developed.



Data Stewards

For general questions on research data management please send an e-mail to [> researchdata@unibas.ch](mailto:researchdata@unibas.ch). For subject-specific questions, you can directly get in touch with the data stewards of your faculty, department or institute:

Faculty of Theology



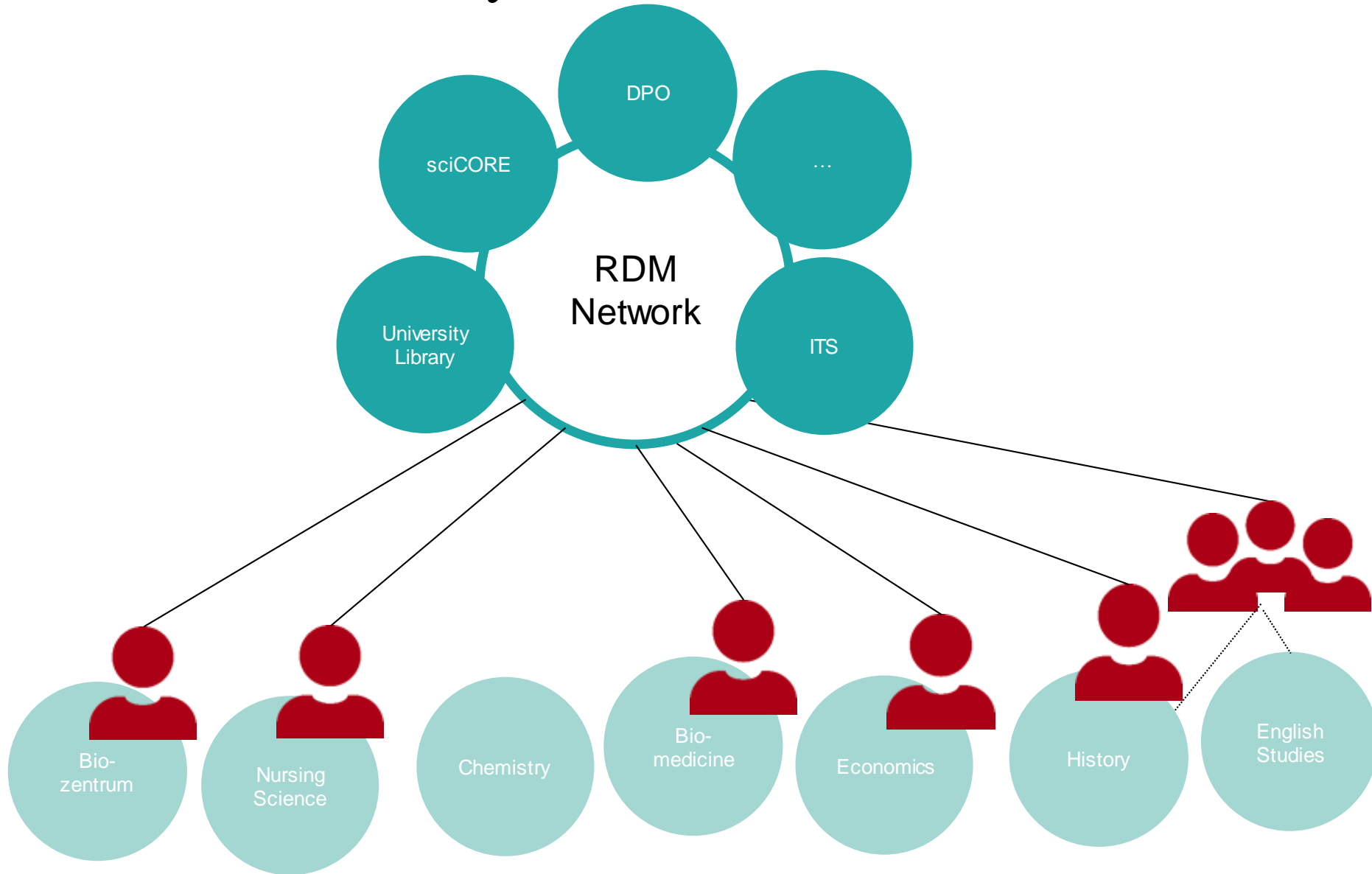
Faculty of Law



Faculty of Medicine



What do we mean by data stewards?



Training programme

Autumn Semester 2021

- Basics of RDM (2 hours)
- Data protection (2x 2 hours)
- The role and best practices of data stewardship (1/2 day)
- FAIR and Open Data Management (1/2 day)

Spring Semester 2022

- Data Stewardship @unibas: next steps (2 hours)
- Data Management Plans (2 hours)
- Data protection (2x 2 hours)
- Intellectual Property Rights (4 hours)
- Coffee Lectures on infrastructures and tools for RDM (15 min., every other week)

More information on the trainings:

<https://researchdata.unibas.ch/en/services/data-stewards/>

Training programme

Future courses (in planning)

- Information security
- Funding and budget planning for research projects
- Continuation of the Coffee Lectures

Further (subject-specific) courses and events on demand, for example:

- Project management in the context of RDM support
- Data protection in qualitative research
- Meta data schemas and standards
- Research ethics
- De-identification of research data
- Visualisation and reusability of research data

- Furthermore: Exchange meetings for data stewards, combination of inputs and discussion

Collaboration with data stewards

- Support for individual researchers
- Advice and feedback on Data Management Plans
- Revision of the RDM website
- Organisation of subject-specific trainings, f.ex. as part of the graduate schools

Next steps

- Further courses and events, increasingly also on more specific topics and organised together with data stewards
- Compiling information on RDM together with data stewards: creating collection with RDM tools, working groups etc.
- Strengthen networking between the data stewards
- “filling gaps”: recruitment of more data stewards
- Follow-up application for continuation of the programme after the pilot project (apply for grants of the ORD action plan of swissuniversities)



Graphic: pixabay.com

First conclusions after three quarters of a year

- Shortage of resources
- Differences between the departments
- Opportunity to bring RDM closer to the disciplines
- Start of the programme during the pandemic had advantages and disadvantages
- Making the step from participation of data stewards in the programme to the active exercise of their role in the departments



Graphic: pixabay.com

Further information and contact

Our website: <https://researchdata.unibas.ch/en/>

Our mail address: researchdata@unibas.ch

Who is behind this address: Silke Bellanger, Christina Besmer, Iris Lindenmann
(all University Library of Basel)



Universität
Basel

Thank you
for your attention.