

# Two new species of *Itaphlebia* (Insecta, Mecoptera, Nannochoristidae) from the late Middle Jurassic of China

Yizi Cao<sup>1</sup>, Xiaodan Lin<sup>2</sup>, Chungkun Shih<sup>1,3</sup>, Dong Ren<sup>1</sup>

**1** College of Life Sciences, Capital Normal University, 105 Xisanhuanbeilu, Haidian District, Beijing 100048, China **2** Key Laboratory of Green Prevention and Control of Tropical Plant Diseases and Pests, Ministry of Education, College of Plant Protection, Hainan University, Haikou, Hainan 570228, China **3** Department of Paleobiology, National Museum of Natural History, Smithsonian Institution, Washington, DC, 20013–7012, USA

Corresponding authors: Dong Ren ([rendong@mail.cnu.edu.cn](mailto:rendong@mail.cnu.edu.cn)), Xiaodan Lin ([994239@hainanu.edu.cn](mailto:994239@hainanu.edu.cn))

Academic editor: Nina Sinichenkova | Received 15 April 2022 | Accepted 27 May 2022 | Published 24 June 2022

<https://zoobank.org/3DDF4C28-D581-43FD-9C79-90435904CDE3>

**Citation:** Cao Y, Lin X, Shih C, Ren D (2022) Two new species of *Itaphlebia* (Insecta, Mecoptera, Nannochoristidae) from the late Middle Jurassic of China. ZooKeys 1108: 175–188. <https://doi.org/10.3897/zookeys.1108.85378>

## Abstract

Two new species of *Itaphlebia* Sukatsheva, 1985, *I. procera* **sp. nov.** and *I. elegana* **sp. nov.**, are described and illustrated from the latest Middle Jurassic Jiulongshan Formation of Daohugou, Inner Mongolia, China. Based on fossil specimens with wings, these new species are established and assigned to *Itaphlebia* by a combination of three forewing characters: Sc with three branches ending at C, the four-branched Rs ( $R_2$  to  $R_5$ ) originating distad of M (vs. three-branched RS ( $R_{2+3}$  undivided) in all other fossil and extant nannochoristids), and M forking with four branches; and a hind wing character of Sc simple and short, terminating at C well before the pterostigma. Furthermore, this is the first report of long and robust setae present on the anal veins of the forewing for *I. elegana* **sp. nov.** in fossil Nannochoristidae.

## Keywords

Insect fossil, Jiulongshan Formation, nannochoristid, taxonomy

## Introduction

Mecoptera Packard, 1886 is an order of insects, comprising nine extant families with more than 600 species (Soszyńska-Maj and Krzemiński 2013; Lin et al. 2016; Tillyard 1917). The earliest fossil records of mecopterans are known from the Early Permian,

which occupy an important place in the Insecta. The insect fossil sites of Nannochoristidae Tillyard, 1917 are located in Siberia in Russia, Kazakhstan and Inner Mongolia, Liaoning in China. In the Southern Hemisphere, larval fossils from the Australian Cretaceous and eight extant species of nannochoristids have been documented in Argentina, Chile, New Zealand, Australia, and Tasmania (Jell and Duncan 1986; Byers 1989a; Ren et al. 2009; Cao et al. 2015). Based on conspicuously divergent larval morphology and lifestyle, Nannochoristidae has been suggested as a separate suborder, Nannomecoptera Hinton, 1981, to distinguish it from other families of Mecoptera (Penny 1975; Hinton 1981; Kristensen 1989). In recent phylogenetic studies, the systematic placement of Nannochoristidae has not been accurately settled. As a result of unusual and more primitive morphological characters of larval and immature stages (Beutel and Baum 2008; Beutel et al. 2009), Nannochoristidae together with Boreidae Latreille, 1816 form a clade with fleas, based more on phenetic differences than phylogenetic argumentation (Whiting 2002). Even though such thorough analyses have used extensive molecular data, the precise treatment and phylogenetic position of this separated suborder are still uncertain as well as unpredictable. Meanwhile, biological information on nannochoristids is limited; larvae are campodeiform, prognathous and predaceous, adults are almost aquatic, mostly resting or laying eggs on moist leaf litters at river edges. The adults may be omnivorous or nectarivorous, as documented studies on head morphology distinctly illustrate that they exclusively feed on flowing liquid, mainly nectar (Beutel and Baum 2008; Tillyard 1917; Beutel and Friedrich 2019). With their peculiar method of copulation and lacking detailed observations on feeding habits (Tillyard 1917), the lifestyle and biology of these rather fragile adults are still unclear so far.

Due to limited specimens of well-preserved compression fossils for nannochoristids, it was difficult to study detailed morphological characters to classify, diagnose and describe species or genera of these specimens. Therefore, the classifications of fossil species and genera of Nannochoristidae are in a state change and revision. So far, six genera: *Dahurochorista* Sukatsheva, 1985, *Dahurolarva* Sukatsheva, 1985, *Itaphlebia* Sukatsheva, 1985, *Namdyrus* Sukatsheva, 1993, *Tarantogus* Sukatsheva, 1985, and *Undisca* Sukatsheva, 1990, and one subgenus: *Eunannochorista* Novokshonov, 1997, from the Middle Jurassic and the Lower Cretaceous have been described (Sukatsheva 1985; Sukatsheva 1990; Novokshonov 1997a, b; Liu et al. 2010; Cao et al. 2015). However, the diagnoses of *Dahurolarva* and *Tarantogus* (Sukatsheva 1985) are based only on larvae, as revised by Novokshonov (1997b), and the diagnoses of *Undisca* and *Itaphlebia* (Sukatsheva 1985; Sukatsheva 1990) need revision after new and more well-preserved fossils have become available. In this paper, we describe two new species of *Itaphlebia*: *I. procera* sp. nov. and *I. elegana* sp. nov., and emend the diagnosis of *Itaphlebia*, based on five new and well-preserved fossil specimens.

All specimens were collected from the Jiulongshan Formation at Daohugou Village of Ningcheng County in Inner Mongolia. This locality is one of the richest Middle Jurassic fossil-bearing sites in China. The Jiulongshan Formation has yielded abundant and diverse mecopteran fossils (Cao et al. 2015), highlighting the complex interactions

of mecopterans with the ecosystems (Wang et al. 2012). The deposits are considered as the latest Middle Jurassic (late Callovian) in age (Walker et al. 2013; Ren et al. 2019; Gao et al. 2021), approximately 165–164 Mya.

## Materials and methods

The new type specimens are collected from the latest Middle Jurassic, Jiulongshan Formation; Daohugou Village, Shantou Township, Ningcheng City, Inner Mongolia, China and housed in the insect fossil collection of the Key Laboratory of Insect Evolution and Environmental Changes, College of Life Sciences, Capital Normal University, Beijing, China (CNUB; Dong Ren, Curator).

These specimens were examined and photographed using a LEICA M165C dissecting microscope with a LEICA DFC 500 digital camera system with cool white transmitted light from double optical fibers, irradiating the specimens from two sides simultaneously, and illustrated with the aid of a drawing tube attachment. Enlarged photos were taken by using a Nikon SMZ 25 microscope with a Nikon DS-Ri 2 digital camera system. The line drawings were edited with Adobe Photoshop CS5. We use the venational nomenclature of Byers (1989b) as a frame of reference.

## Systematic palaeontology

### Order Mecoptera Packard, 1886

### Family Nannochoristidae Tillyard, 1917

### Genus *Itaphlebia* Sukatsheva, 1985

*Chrysopanorpa* Ren, 1995, p. 91.

*Netropanorpodes* Sun, Ren & Shih, 2007, p. 867.

*Stylopanorpodes* Sun, Ren & Shih, 2007, p. 865.

*Protochoristella* Sun, Ren & Shih, 2007, p. 405.

**Diagnosis.** Small to moderately-sized insect (forewing length 5.1–15.4 mm); body slender; wing nearly oval or rounded apically. Forewing: Sc with two or three branches ending at C; Rs ( $R_2$  to  $R_5$ ) origination distad of M origination; Rs forking with four (in some cases with five) branches; M forking with four (in some cases with five) branches. Hind wing: Sc simple and short, terminating at C well before pterostigma; Rs forking with four branches; M forking with four branches (in some cases with five).

**Type species.** *Itaphlebia completa* Sukatsheva, 1985

**Species included.** Type species, *I. ruderalis* comb. (= *Chrysopanorpa ruderalis* Ren, 1995 = *Stylopanorpodes eurypterus* Sun, Ren & Shih, 2007 = *Protochoristella formosa*

Sun, Ren & Shih, 2007), *I. jeniseica* Novokshonov, 1997 (= *Netropanorpodes sentosus* Sun, Ren & Shih, 2007), *I. multa* Novokshonov, 1997 (= *Protochoristella polyneura* Sun, Ren & Shih, 2007), *I. reducta* Novokshonov, 1997, *I. sharovi* Novokshonov, 1997, *I. generosa* Novokshonov & Sukatsheva, 2003, *I. decorosa* comb. (= *Netropanorpodes decorosus* Sun, Ren & Shih, 2007), *I. exquisita* Liu, Zhao & Ren, 2010, *I. laeta* Liu, Zhao & Ren, 2010, *I. longiovata* Cao, Shih, Bashkuev & Ren, 2015, *I. amoena* Cao, Shih, Bashkuev & Ren, 2015, *I. procera* sp. nov. and *I. elegana* sp. nov.

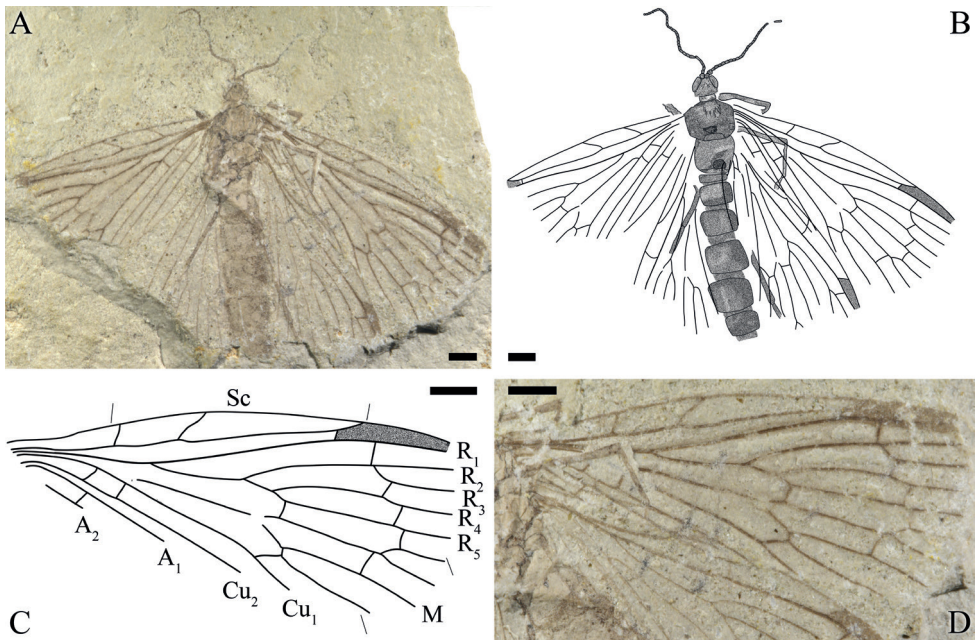
***Itaphlebia procera* Cao, Shih & Ren, sp. nov.**

<https://zoobank.org/3771FB50-DDB5-45CA-968A-8DC60CE923CF>

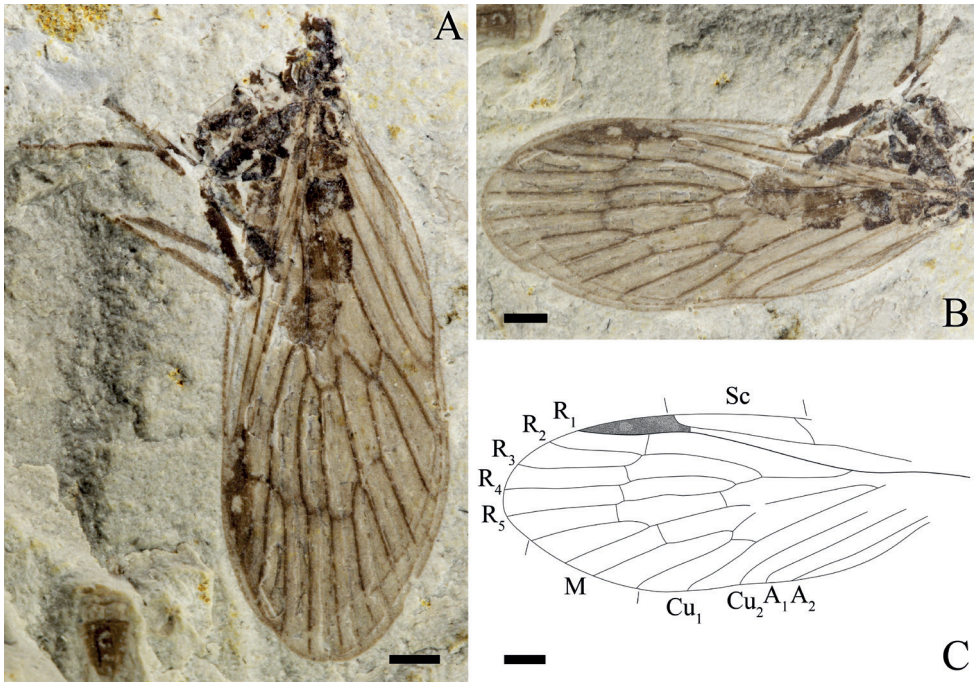
Figs 1, 2

**Etymology.** The specific name is derived from the Latin adjective “procerus”, indicating the relatively large body size.

**Type material.** **Holotype:** sex unknown, No. CNU-MEC-NN2009273 (Fig. 1), preserved in dorsal view, head and thorax well-preserved, with four wings partly preserved, veins of right forewing mostly discernible. **Paratype:** sex unknown, No. CNU-MEC-NN2009168 (Fig. 2), preserved in lateral view, body partly preserved, only one forewing venation clearly discernible.



**Figure 1.** *Itaphlebia procera* sp. nov., holotype, CNU-MEC-NN2009273 **A** photograph of holotype **B** line drawing of holotype **C** line drawing of right forewing **D** photograph of right wing. Scale bars: 1 mm (**A–D**).



**Figure 2.** *Itaphlebia procera* sp. nov., paratype, CNU-MEC-NN2009168 **A** photograph of paratype **B** photograph of wings **C** line drawing of forewing. Scale bars: 1 mm (**A–C**).

**Locality and horizon.** All specimens were collected from the Jiulongshan Formation, latest Middle Jurassic age (Bathonian–Callovian boundary interval) from Daohugou Village, Ningcheng County, Inner Mongolia Autonomous Region in China.

**Diagnosis.** Body size ca 10 mm. On forewing, Sc forking with three branches;  $R_{2+3}$  forking before  $M_{1+2}$ ; crossvein  $r_4-r_5$  before crossvein  $r_5-m_1$ ;  $Cu_1+M$  forking before the crossvein  $cu_1-cu_2$ ; and crossvein  $cu_1-m_4$  after  $M_{3+4}$  forking.

**Description.** Mainly based on Holotype, unless indicated as paratype.

**Head:** Oval with large compound eyes. Antenna partially preserved, filiform with 33 and 27 segments as preserved respectively. Vertex of the head raised, mouthparts long and slender.

**Thorax:** Long and relatively well-preserved, pronotum (width 0.5 mm, length 0.25 mm), mesonotum (width 1.5 mm, length 1.25 mm), metanotum (width 1.25 mm, length 1.4 mm) and scutellum (heavy shadowed) clearly discernible.

**Leg:** Leg barely preserved and slender, tibia longer than femur, surfaces of all legs densely covered with short and irregularly arranged setae.

**Wing:** Forewing: Long and oval, basal part of the wing narrow, gradually broadening from the base toward the apex. Right forewing with the anterior area broad, a distinct pterostigma present; Sc with 3 branches,  $Sc_1$  and  $Sc_2$  ending at C before the middle of the wing length,  $Sc_3$  terminated at C right near pterostigmal area; R forking before  $Sc_2$ , Rs forking with 4 branches, one short crossvein  $sc-r$  before pterostigma,

crossvein  $r_1-r_2$  under the pterostigma, approximately near the forking of  $R_{2+3}$ , crossvein  $r_3-r_4$  after the level of the crossvein  $r_1-r_2$ ,  $R_{2+3}$  4 times as long as  $R_{4+5}$ , crossvein  $r_5-m_{1+2}$  emerged after the forking of  $R_{4+5}$ , oblique crossvein  $r_5-m_1$  present after the crossvein  $r_4-r_5$ ; conspicuous thyridium at the forking of M; M with 4 branches,  $M_{3+4}$  divided beyond the forking of  $M_{1+2}$ ; straight crossvein  $m_{1+2}-m_3$  between  $M_{1+2}$  and  $M_3$ , near the forking of  $M_{1+2}$ ; crossvein  $m-cu_1$  after the forking of  $M_{3+4}$ , somewhat S-shaped;  $Cu_1$  coalesced with M for a long distance and separated from M after the crossvein  $cu_1-cu_2$ ;  $A_1$  and  $A_2$  are almost parallel; crossvein  $a_1-a_2$  after the level as the base of  $Cu_1$ ;  $A_3$  absent. Hind wing: Shorter than forewing; the pterostigma slightly darkened. Sc simple, terminated at C in the first one third of wing, one crossvein  $c-r_1$  present at half-length of hind wing;  $R_1$  under pterostigma and connected with C by a short crossvein  $c-r_1$ ; posterior and anal margins in hind wings not preserved.

**Abdomen:** With six visible large abdominal segments, segments II–IV and segment VI distinctly smaller than segment V, the distal segments not preserved.

**Remarks.** The new species shows great differences from other species of *Itaphlebia* in having relatively moderate body size, a broader thoracic notum and the presence and position of the crossvein  $r_5-m_1$  that is in a more distal position than in other species, which is also a new finding for nannochoristid venation. So far, we have found two specimens of the new species, of which characters appear to be stable and therefore sufficient for establishing a new species.

**Measurements (in mm).** **Holotype:** No. CNU-MEC-NN2009273: head length 0.7 (excluding the antenna), head maximum width 1.0 (excluding the antenna), thorax length ca 3.0, thorax maximum width 1.9, forewing length 9.4, hind wing length 7.5 (all as preserved). **Paratype:** No. CNU-MEC-NN2009168: forewing length 11.5, forewing maximum width 4.4 (all as preserved).

***Itaphlebia elegana* Cao, Shih & Ren, sp. nov.**

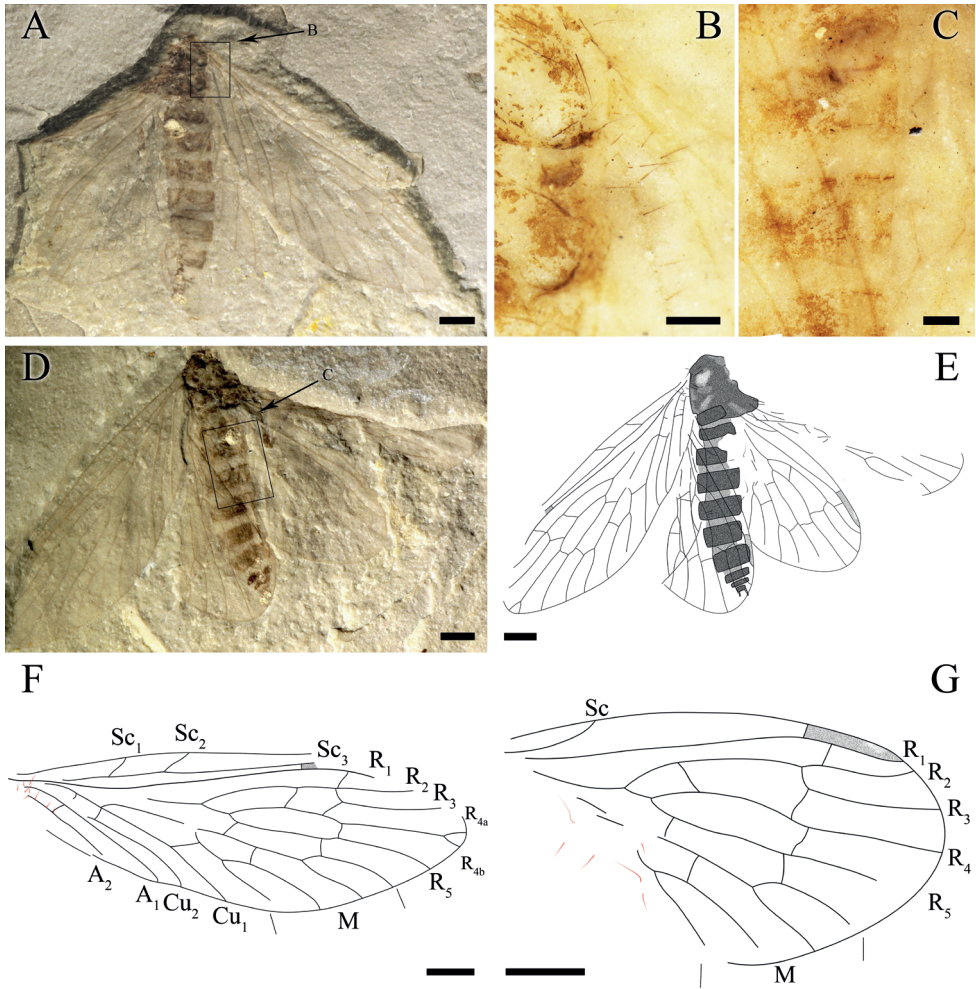
<https://zoobank.org/3D8414C6-F617-4F7B-BC84-13330D7A5A5D>

Figs 3–5

**Etymology.** The specific name is from Latin adjective “elegans”, referring to the elegant body posture.

**Type material.** **Holotype:** female, No. CNU-MEC-NN2008228 p/c (Fig. 3), preserved in lateral view, thorax partly preserved, abdomen well-preserved, with four wings partly preserved, veins of one forewing mostly discernible, veins of one hind wing relatively discernible. **Paratypes:** sex unknown, No. CNU-MEC-NN2015026 (Fig. 4), preserved in ventral view, thorax and abdomen partly preserved, only right forewing venation clearly discernible; female, CNU-MEC-NN2016020 p/c (Fig. 5), body nearly complete but not well-preserved, forewing venation partly discernible.

**Locality and horizon.** All specimens were collected from the Jiulongshan Formation, latest Middle Jurassic age (Bathonian–Callovian boundary interval) from Daohugou Village, Ningcheng County, Inner Mongolia Autonomous Region in China.



**Figure 3.** *Itaplebia elegana* sp. nov., holotype, CNU-MEC-NN2008228 p/c. **A** photograph of part **B** enlarged details of basal forewing of part, anal veins with long and robust setae (under alcohol) **C** enlarged details of basal hind wing of counterpart (under alcohol) **D** photograph of counterpart **E** line drawing of counterpart **F** Line drawing of forewing of part, anal veins with long and robust setae **G** line drawing of hind wing of counterpart. Scale bars: 1 mm (A–G).

**Diagnosis.** On forewing, costal area slightly broad; Sc forking with three branches; Rs ( $R_2$  to  $R_5$ ) forking with five branches;  $R_{2+3}$  forking before the crossvein  $r_3-r_4$ ;  $R_{4+5}$  forking before the crossvein  $r_5-m_{1+2}$ ; crossvein  $cu_1-cu_2$  near the forking of  $Cu_1+M$ , and crossvein  $cu_1-m_4$  far before  $M_{3+4}$  forking. Long and robust setae present on anal veins of forewing.

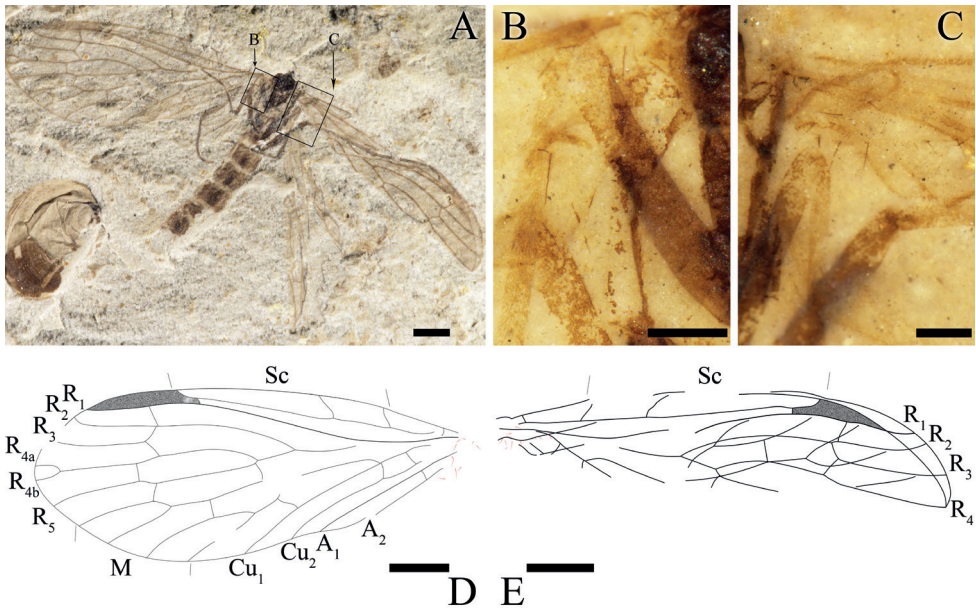
**Description.** Mainly based on Holotype, unless indicated as paratype.

**Thorax:** Incompletely preserved, setae discernible.

**Wing:** Long and oval, basal part of the wing narrow, gradually broadening from the base toward the apex. Forewing with the basal part of C somewhat convex, anterior

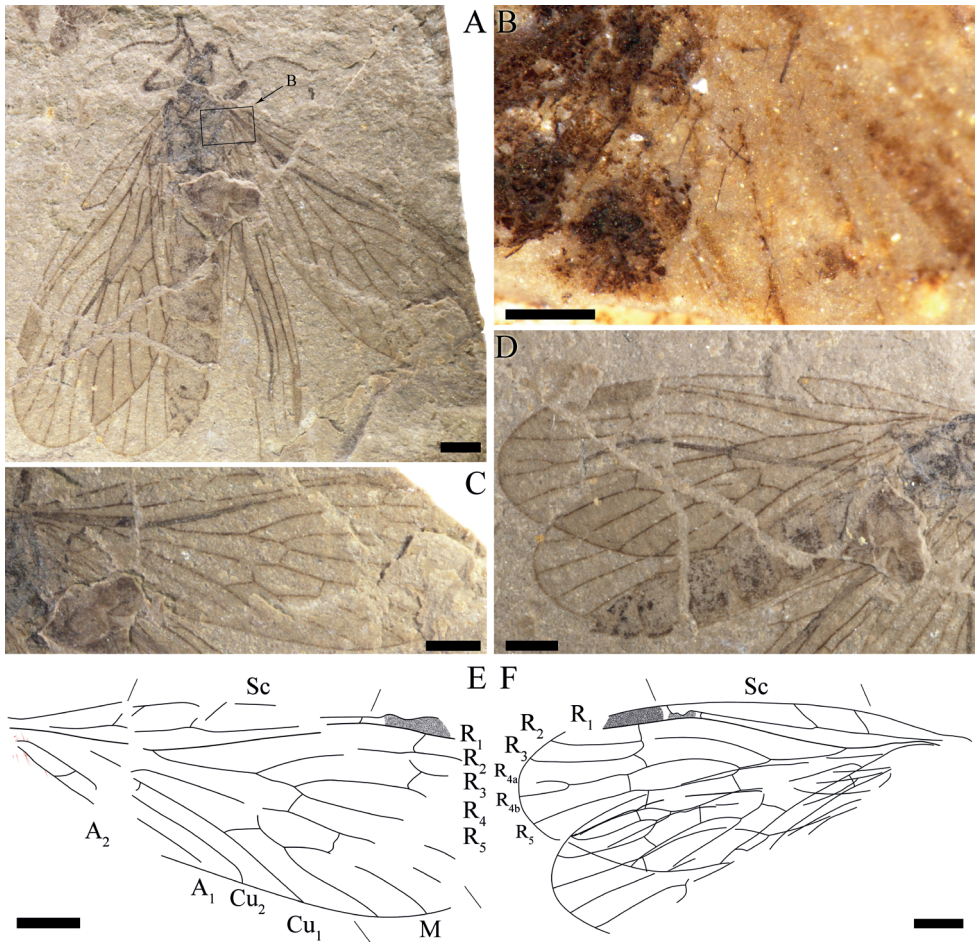
area slightly broad, pterostigma incompletely preserved; Sc with three branches, Sc<sub>1</sub> and Sc<sub>2</sub> ending at C before the middle of the wing length, Sc<sub>3</sub> near pterostigmal area; Rs forking with five branches, one short crossvein sc-r before pterostigma, crossvein r<sub>1</sub>-r<sub>2</sub> under the pterostigma, approximately near the forking of R<sub>2+3</sub>, crossvein r<sub>2+3</sub>-r<sub>4</sub> before crossvein sc-r, oblique crossvein r<sub>3</sub>-r<sub>4</sub> between R<sub>3</sub> and R<sub>4</sub>, R<sub>2+3</sub> four times as long as R<sub>4+5</sub>, R<sub>4</sub> forking with two branches (R<sub>4a</sub>, R<sub>4b</sub>), oblique crossvein r<sub>5</sub>-m<sub>1+2</sub> emerged after the forking of R<sub>4+5</sub>, crossvein r<sub>5</sub>-m<sub>1</sub> present before the crossvein r<sub>4</sub>-r<sub>5</sub>; conspicuous thyridium at the forking of M; M with four branches, M<sub>3+4</sub> divided beyond the forking of M<sub>1+2</sub>; straight crossvein m<sub>1+2</sub>-m<sub>3</sub> forking at the middle length of M<sub>1+2</sub>; crossvein m-cu<sub>1</sub> before the forking of M<sub>3+4</sub>; Cu<sub>1</sub> coalesced with M for a relatively short distance and separated from M near the crossvein cu<sub>1</sub>-cu<sub>2</sub>; long and robust setae present on veins A<sub>1</sub> and A<sub>2</sub>, A<sub>1</sub> and A<sub>2</sub> almost parallel; crossvein a<sub>1</sub>-a<sub>2</sub> at the same level of Cu<sub>1</sub>; A<sub>3</sub> absent. Hind wing shorter and broader than forewing; pterostigma preserved in hind wing. Sc simple, terminated at C in the first one third of wing; R<sub>1</sub> under pterostigma and connecting with C by a short crossvein c-r<sub>1</sub>, Rs with four branches, two crossveins between R<sub>2+3</sub> and R<sub>4</sub>. Anal margins in hind wings not preserved, several long and robust setae preserved.

**Abdomen:** With 11 visible abdominal segments, segments VIII–XI distinctly smaller than segment VII, a pair of cerci at the end of abdomen, each one with three segments, setae discernible.



**Figure 4.** *Itaphlebia elegana* sp. nov., paratype, CNU-MEC-NN2015026 **A** photograph of paratype **B** enlarged details of base of right forewing (under alcohol) **C** enlarged details of base of left forewing (under alcohol) **D** line drawing of right forewing **E** line drawing of left forewing. Scale bars: 1 mm (**A–E**).





**Figure 5.** *Itaphlebia elegana* sp. nov., paratype, CNU-MEC-NN2016020 p/c. **A** photograph of part of paratype **B** enlarged details of base of forewing of counterpart of paratype (under alcohol) **C** photograph of right forewing of part **D** photograph of left forewing and part of hind wing of part **E** line drawing of right forewing **F** line drawing of left forewing and part of hind wing. Scale bars: 1 mm (**A–F**).

**Remarks.** *Itaphlebia elegana* sp. nov. demonstrates an individual aberration of the sixth branch of R vein by the forking of  $R_4$ , providing a character for understanding the evolution of wing venation. Although the hind wing has R with five branches, the diagnosis of *Itaphlebia* should be revised to indicate that the forewing Rs forking with four or five branches. CNU-MEC-NN2008228 p/c has two crossveins between  $R_{1+2}$  and  $R_{3+4}$ , but only one crossvein is visible in CNU-MEC-NN2016020 p/c and CNU-MEC-NN2016026 p/c. Considering these three specimens have many similarities regarding other characters, we regard them as the same species. The difference in crossveins between  $R_{2+3}$  and  $R_4$  might have been due to the intraspecific difference or inheritable mutations.

**Measurements (in mm).** *Holotype*: female, No. CNU-MEC-NN2008228 p/c: Abdomen length 6.0, forewing length 9.4, hind wing length 7.5 (all as preserved). *Paratypes*: sex unknown, No. CNU-MEC-NN2015026: thorax length 1.8, thorax maximum width 1.1, forewing length 7.5, forewing maximum width 3.0 (all as preserved); female, CNU-MEC-NN2016020 p/c: head length 1.1 (excluding the antenna), head maximum width 0.8 (excluding the antenna), thorax length 2.2, thorax maximum width 1.7, forewing length 8.4, forewing maximum width 3.5 (all as preserved).

## Discussion

Taxonomic and morphological characters for fossil nannochoristids from the latest Middle Jurassic Jiulongshan Formation in Northeastern China have been investigated. *Itaphlebia elegana* sp. nov. is unique in having a forewing with  $R_4$  forking with two branches and remarkable long setae on the anal veins. Novokshonov (1997a) thoroughly studied the difference in venation [mainly in Sc branches of forewing and  $R_s$  ( $R_{2+3}$ ) branches of both wings] between Mesozoic nannochoristids and the only extant genus, *Nannochorista* including, *N. dipteroides* Tillyard, 1917 (Tasmania); *N. eboraca* Tillyard, 1917 (New South Wales); *N. holostigma* Tillyard, 1917 (Tasmania); *N. maculipennis* Tillyard, 1917 (Tasmania); *N. neotropica* Navás, 1928 (western Argentina, Neuquén, Chile, Arauco, Llanquihue, Chiloe, Magellanes); *N. edwardsi* Kimmins, 1929 (western Argentina, Chile); *N. andina* Byers, 1989 (western Argentina, Neuquén); *N. philpotti* (= *Choristella philpotti* Tillyard, 1917, = *Microchorista philpotti* Byers, 1974) Kristensen, 1989 (New Zealand). In fossil nannochoristids, Sc has three branches (most species) on the forewing, terminating at C and  $R_s$  has four branches (five branches only in *I. elegana* sp. nov.), while all extant species have Sc with two branches,  $Sc_2$  fused with  $R_1$  for a distance (most species) on the forewing; and  $R_s$  with three branches. Therefore, the wing venation in Nannochoristidae has become simplified over time. On the other hand, the distance from the forking point of  $R_{4a+b}$  to the margin of the forewing is 0.5 mm for the holotype of *I. elegana* sp. nov. (vs. 0.5 mm and 1.1 mm for the paratypes), indicating the occurrence of such a forking of  $R_{4a}$  and  $R_{4b}$  in the forewing is frequent. Hence, the forking of  $R_4$  should be a character for *I. elegana* sp. nov. and the diagnosis of *Itaphlebia* is also emended.

*Itaphlebia elegana* sp. nov. has distinct and short setae on the anal veins of the forewing, which was described in only one extant species of Nannochoristidae, *Nannochorista andina* (Byers 1989a). The setae of *I. elegana* sp. nov. are similar in appearance to those of the two fossil species, *Jurassipanorpa sticta* Ding Shih & Ren, 2014 and *Jurassipanorpa impunctata* Ding Shih & Ren, 2014 in Panorpidae Latreille, 1805 (Ding et al. 2014) and the extant *Notiothauma reedi* in Eomeropidae Cockerell, 1909 (Cockerell 1909; Crampton 1930; Mickoleit 1971). The distinct and short setae on forewing anal veins of *I. elegana* sp. nov. are different from microtrichia on the wing membrane or the dense and shorter setae of extant species of Panorpidae as well as the notably long and robust setae for the extinct species of Orthophlebiidae Handlirsch, 1906 (Mickoleit 1971; Ding et al. 2014).

Furthermore, such setae in *Itaphlebia elegana* sp. nov. are apparently shorter and less powerful, compared to the many stout bristles (dinotrichia) on the basal anterior margin of the forewings of fossil eomeropids of *Tsuchingothauma shihi* Ren & Shih 2005 from the latest Middle Jurassic and *Typhothauma yixianensis* Ren & Shih 2005 from the Early Cretaceous, both in Northeastern China (Ren and Shih 2005), and of both fore- and hind wings of the extant *N. reedi* (Carpenter 1909, Crampton 1930; Mickoleit 1971; Carpenter 1972). But such setae in *I. elegana* sp. nov. might be homologous to those of *N. reedi* as they all attach to the basal parts of the wings (Carpenter 1972; Crampton 1930; Mickoleit 1971). The setae of *N. reedi* are located on the middle or anal parts of the forewing, gradually getting smaller and only emerging on the basal region of some veins in the forewing. Such long bristles in the hind wing are usually the forerunners of the frenulum of higher insects on the front edge of the hind wing, which is hardly called a frenulum on the forewing (Crampton 1930). Therefore, the functions of these setae on forewings remain puzzling. Due to the setae occurring only on the anal veins of the forewings for *I. elegana* sp. nov., we surmised that they might have been sensory or used for wing coupling (Byers 1989a; Ding et al. 2014). However, since we have not found any other associated structures preserved on the anterior part of the hind wings of these fossil specimens as well as extant species, the functions of these setae are still unknown.

Compared with other species of *Itaphlebia*, *I. procera* sp. nov. has unique venational characters: crossvein  $r_5$ - $m_1$  distad of the levels of crossveins between  $R_1$  and  $R_s$ , namely the forking of  $M_{1+2}$  originates basal (for Fig. 2C) or distad (for Fig. 1C) of the forking of  $R_{2+3}$ ; and crossvein  $m_{1+2}$ - $m_3$  is near the level of the crossvein between  $R_1$  and  $R_s$  (vs. basal location in most species). Hence, we propose that the origin of  $M_{1+2}$  is variable in *Itaphlebia*, and it should be a diagnosis at the level of species for *Itaphlebia*.

## Conclusions

Eight extant species of Nannochoistidae Tillyard, 1917 have been documented in the Southern Hemisphere. The fossil sites of nannochoistids are in Siberia in Russia, Kazakhstan and Inner Mongolia and Liaoning in China. Due to limited specimens of well-preserved compression fossils, it was difficult to study detailed morphological characters to classify, diagnose and describe species or genera of these fossil nannochoistids.

We describe two new species of an extinct genus, *Itaphlebia procera* sp. nov. and *I. elegana* sp. nov., in the family Nannochoistidae, based on five fossil specimens from the latest Middle Jurassic Jiulongshan Formation of Daohugou, Inner Mongolia, in Northeastern China. *Itaphlebia elegana* sp. nov. demonstrates a new and unique forking of  $R_4$  into two branches ( $R_{4a}$ ,  $R_{4b}$ ), providing a character for understanding the evolution of wing venation. Furthermore, we report long and robust setae present on the anal veins of the forewing in *I. elegana* sp. nov. It is the first time that these two characters of *Itaphlebia* are documented for the fossil records in Nannochoistidae.

These new species not only broadened the diversity of the *Itaphlebia* in the mid-Mesozoic ecosystems but also provided new taxonomic information to emend the generic diagnosis.

## Acknowledgements

We thank Longfeng Li and Jiajia Wang of the CNU for their improvement of our manuscript. We appreciate the help and assistance provided to the first author by Chen Wang and He Ding in the CNU Key Laboratory. Xiaodan Lin was supported by the National Natural Science Foundation of China (32000289 and 42288201), Hainan Provincial Natural Science Foundation of China (320QN201), and Startup Foundation for Introduced Talents of Hainan University (KYQD(ZR)20026). Dong Ren was supported by National Science Foundation of China (grants 31730087 and 32020103006). The authors declare no conflict of interest.

## References

- Beutel R, Baum E (2008) A longstanding entomological problem finally solved? Head morphology of *Nannochorista* (Mecoptera, Insecta) and possible phylogenetic implications. *Journal of Zoological Systematics and Evolutionary Research* 46(4): 346–367. <https://doi.org/10.1111/j.1439-0469.2008.00473.x>
- Beutel RG, Friedrich F [Eds] (2019) *Nannomecoptera and Neomecoptera*. Walter de Gruyter GmbH & Co KG, 1–70. <https://doi.org/10.1515/9783110272543-001>
- Beutel RG, Kristensen NP, Pohl H (2009) Resolving insect phylogeny: The significance of cephalic structures of the Nannomecoptera in understanding endopterygote relationships. *Arthropod Structure & Development* 38(5): 427–460. <https://doi.org/10.1016/j.asd.2009.05.002>
- Byers GW (1989a) The Nannochoristidae of South America (Mecoptera). *The University of Kansas Science Bulletin* 54: 25–34. <https://doi.org/10.5962/bhl.part.19637>
- Byers GW (1989b) Homologies in wing venation of primitive Diptera and Mecoptera. *Proceedings of the Entomological Society of Washington* 91: 497–501.
- Cao YZ, Shih CK, Bashkuev A, Ren D (2015) Revision and two new species of *Itaphlebia* (Nannochoristidae: Mecoptera) from the Middle Jurassic of Inner Mongolia, China. *Alcheringa* 40(1): 24–33. <https://doi.org/10.1080/03115518.2015.1079692>
- Carpenter FM (1972) The affinities of *Eomekope* and *Dinopanorpa* (Mecoptera). *Psyche* 79(1–2): 79–87. <https://doi.org/10.1155/1972/65948>
- Cockerell TDA (1909) Description of Tertiary insects, VI. *American Journal of Science* 27(161): 381–387. <https://doi.org/10.2475/ajs.s4-27.161.381>
- Crampton GC (1930) The wings of the remarkable archaic Mecopteron *Notiothauma reedi* MacLachlan with remarks on their Protoblattoid affinities. *Psyche* (Cambridge, Massachusetts) 37(1): 83–103. <https://doi.org/10.1155/1930/53195>

- Ding H, Shih C, Bashkuev A, Zhao Y, Ren D (2014) The earliest fossil record of Panorpidae (Mecoptera) from the Middle Jurassic of China. *ZooKeys* 431: 79–92. <https://doi.org/10.3897/zookeys.431.7561>
- Gao T, Shih CK, Ren D (2021) Behaviors and interactions of insects in mid-Mesozoic ecosystems of northeastern China. *Annual Review of Entomology* 66(1): 337–354. <https://doi.org/10.1146/annurev-ento-072720-095043>
- Handlirsch A (1906) Die fossilen Insekten und die Phylogenie der rezenten Formen. Ein Handbuch für Paläontologen und Zoologen, Leipzig, Engelmann, 1430 pp.
- Hinton HE (1981) *Biology of Insect Eggs*. Pergamon Press, Oxford, 316 pp.
- Jell PA, Duncan PM (1986) Invertebrates, mainly insects, from the freshwater, Lower Cretaceous, Koonwarra Fossil Bed (Korumburra Group), South Gippsland, Victoria (Australia). *Memoirs of the Association of Australasian Palaeontologists* 3: 111–205.
- Kristensen NP (1989) The New Zealand scorpionfly (*Nannochorista philpotti* comb.n.): Wing morphology and its phylogenetic significance. *Journal of Zoological Systematics and Evolutionary Research* 27(2): 106–114. <https://doi.org/10.1111/j.1439-0469.1989.tb00335.x>
- Lin XD, Shih MJH, Labandeira CC, Ren D (2016) New data from the Middle Jurassic of China shed light on the phylogeny and origin of the proboscis in the Mesopsychidae (Insecta: Mecoptera). *BMC Evolutionary Biology* 16(1): 1–22. <https://doi.org/10.1186/s12862-015-0575-y>
- Liu N, Zhao YY, Ren D (2010) Two new fossil species of *Itaphlebia* (Mecoptera: Nannochoristidae) from Jiulongshan Formation, Inner Mongolia, China. *Zootaxa* 2420(1): 37–45. <https://doi.org/10.11646/zootaxa.2420.1.3>
- Mickoleit G (1971) Das exoskelet von *Notiothauma reedi* MacLachlan, ein Beitrag zur morphologie und phylogenie der Mecoptera (Insecta). *Zeitschrift für Morphologie der Tiere* 69(4): 318–362. <https://doi.org/10.1007/BF00375808>
- Novokshonov VG (1997a) New and little known Mesozoic Nannochoristidae (Insecta: Mecoptera). *Vestnik Permskogo Universiteta, Geology series* 4: 126–136.
- Novokshonov VG (1997b) Early evolution of scorpionflies (Insecta: Panorpidae). Nauka Press, Moscow, Russia, 103–110.
- Packard AS (1886) A new arrangement of the orders of insects. *The American Naturalist*, America, 808 pp.
- Penny ND (1975) Evolution of the extant Mecoptera. *Journal of the Kansas Entomological Society* 48: 331–350.
- Ren D, Shih CK (2005) The first discovery of fossil eomeropids from China (Insecta, Mecoptera). *Dong Wu Fen Lei Xue Bao* 30: 275–280. <https://doi.org/10.5252/z2011n4a2>
- Ren D, Labandeira CC, Santiago-Blay JA, Rasnitsyn AP, Shih CK, Bashkuev AV, Logan MA, Hotton CL, Dilcher D (2009) A probable pollination mode before angiosperms: Eurasian, long-proboscid scorpionflies. *Science* 326(5954): 840–847. <https://doi.org/10.1126/science.1178338>
- Ren D, Shih CK, Gao TP, Wang YJ, Yao YZ (2019) *Rhythms of Insect Evolution—Evidence from the Jurassic and Cretaceous in Northern China*. Wiley Blackwell: New York, America, 710 pp. <https://doi.org/10.1002/9781119427957>

- Soszyńska-Maj A, Krzemiński W (2013) Family Panorpididae (Insecta, Mecoptera) from Baltic amber (upper Eocene): New species, redescription and palaeogeographic remarks of relict scorpionflies. *Zootaxa* 3636(3): 489–499. <https://doi.org/10.11646/zootaxa.3636.3.7>
- Sukatsheva ID (1985) Jurassic scorpionflies of South Siberia and West Mongolia, 1<sup>st</sup> edn.; The Jurassic insects of Siberia and Mongolia: Nauka Press, Moscow, Russia, 96–114 pp.
- Sukatsheva ID (1990) Description of fossil insects. Scorpionflies (Panorpidia), 1<sup>st</sup> Edn.; Late Mesozoic insects of Eastern Transbaikalia: Nauka Press, Moscow, Russia, 88–94 pp.
- Tillyard RJ (1917) Studies in Australian Mecoptera. No. 1. The new family Nannochoristidae, with descriptions of a new genus and four new species: And an appendix descriptive of a new genus and species from New Zealand. *Proceedings of the Linnean Society of New South Wales* 42: 284–301. <https://doi.org/10.5962/bhl.part.4854>
- Walker JD, Geissman JW, Bowring SA, Babcock LE (2013) The Geological Society of America Geologic Time Scale. *Geological Society of America Bulletin* 125(3–4): 259–272. <https://doi.org/10.1130/B30712.1>
- Wang YJ, Labandeira CC, Shih CK, Ding QL, Wang C, Zhao YY, Ren D (2012) Jurassic mimicry between a hangingfly and 347 a ginkgo from China. *Proceedings of the National Academy of Sciences of the United States of America* 109(50): 20514–20519. <https://doi.org/10.1073/pnas.1205517109>
- Whiting MF (2002) Mecoptera is paraphyletic: Multiple genes and phylogeny of Mecoptera and Siphonaptera. *Zoologica Scripta* 31(1): 93–104. <https://doi.org/10.1046/j.0300-3256.2001.00095.x>